



El Dorado County
Water Agency

2019 Water Resources
Development and
Management Plan

Board Briefing

March 13, 2019



Agency's 2019 WRDMP



10 Oct. 2018

EDCWA authorizes MOU with County of El Dorado Memorandum of Understanding for the Preparation of a Countywide Water Management Plan

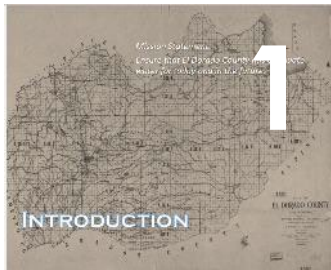


EDCWA authorizes the development of a Comprehensive Water Resources Development and Management Plan

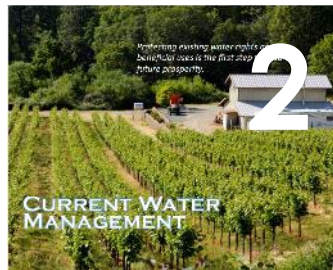


11 Nov. 2018

Agency's 2019 WRDMP



Why We Do This



Where We Are



What Is Ahead



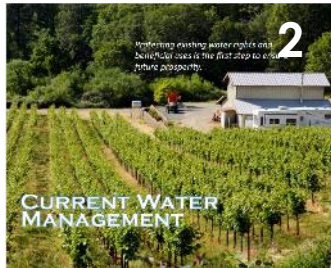
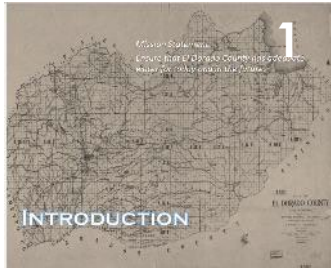
What We Could Do



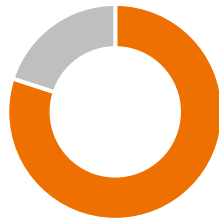
What the Agency Should Do

- **Supports realization of the County's General Plan vision for economic development, environmental protection and social well-being.**
- Is a concise document for policy guidance focusing on Agency's investment and actions
- Is being developed collaboratively, respecting roles and responsibilities
- Is scheduled for completion in June/July 2019, subject to Agency Board's adoption.

2019 WRDMP Progress Update



85%



80%



40%



30%



20%

 **Major Piece:**
Supply-Demand
Scenarios

2019 WRDMP Advisory Groups



Plan Advisory Group

- Overall plan content
- General Plan consistency
- Tahoe Basin and West Slope



Agricultural Advisory Group

- Agricultural demands
- Economics Guided Development

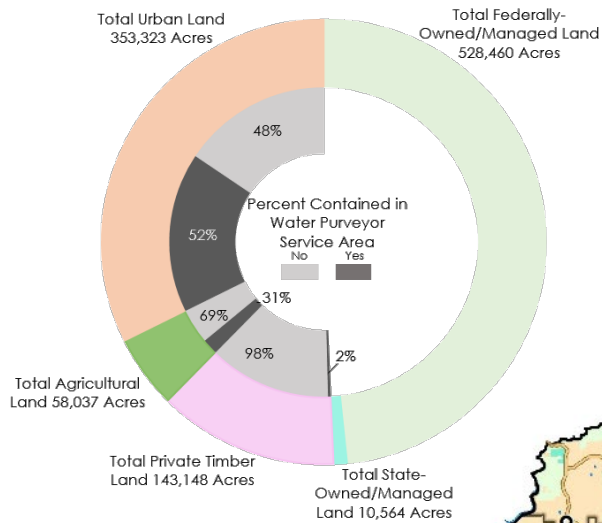


M&I Advisory Group

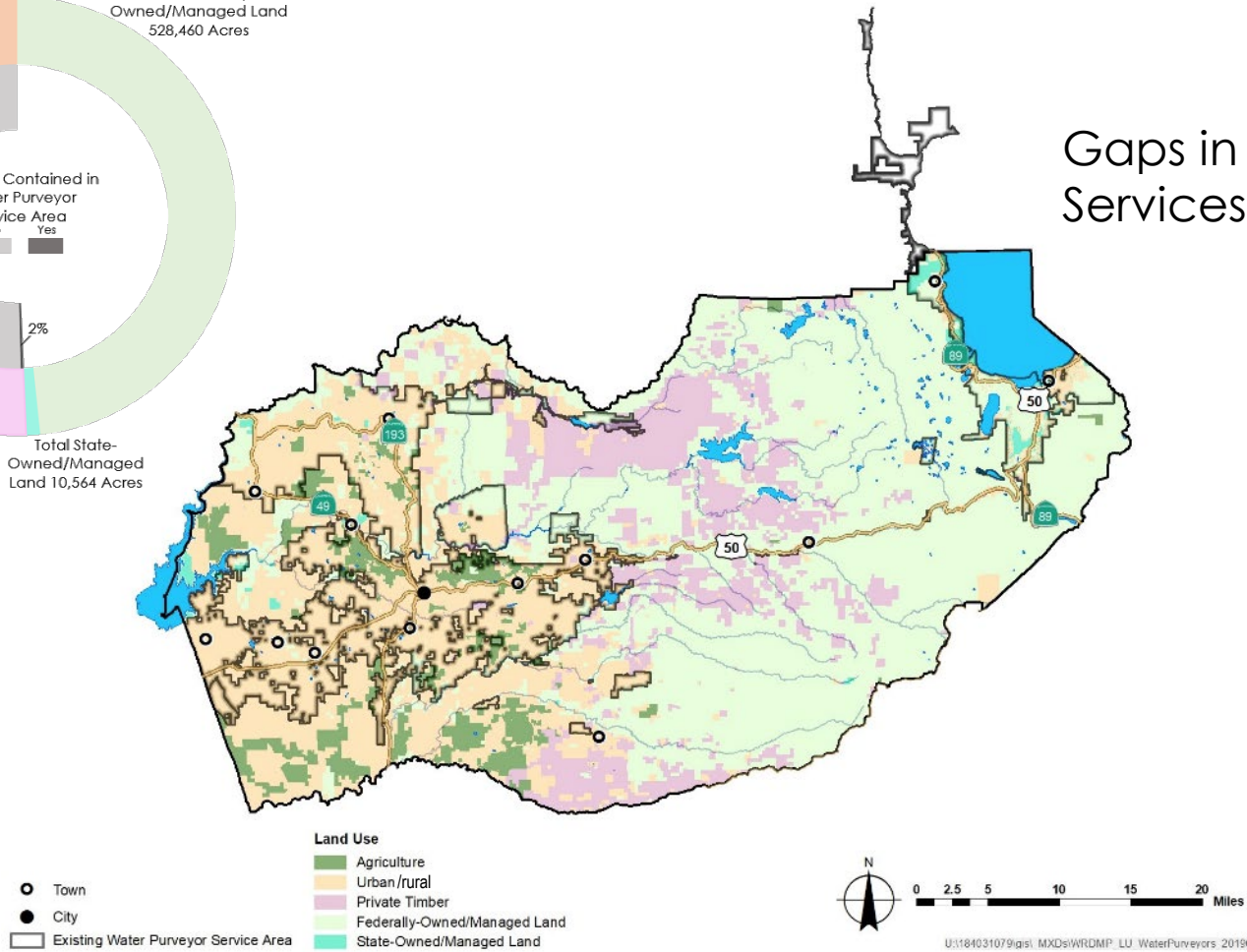
- M&I demands
- Beyond UWMPs



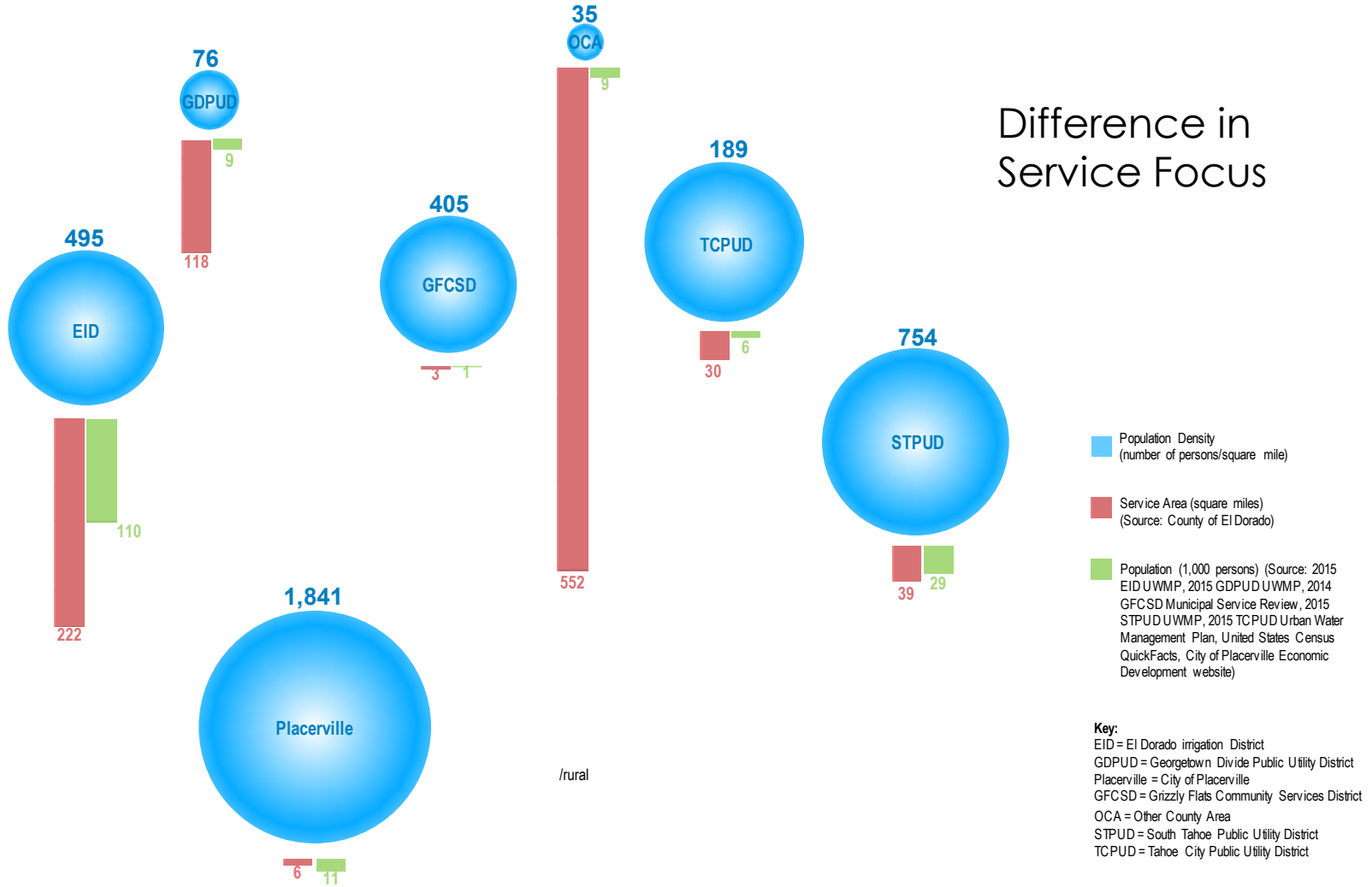
Highlights of Challenges Ahead



Gaps in Services



Highlights of Challenges Ahead

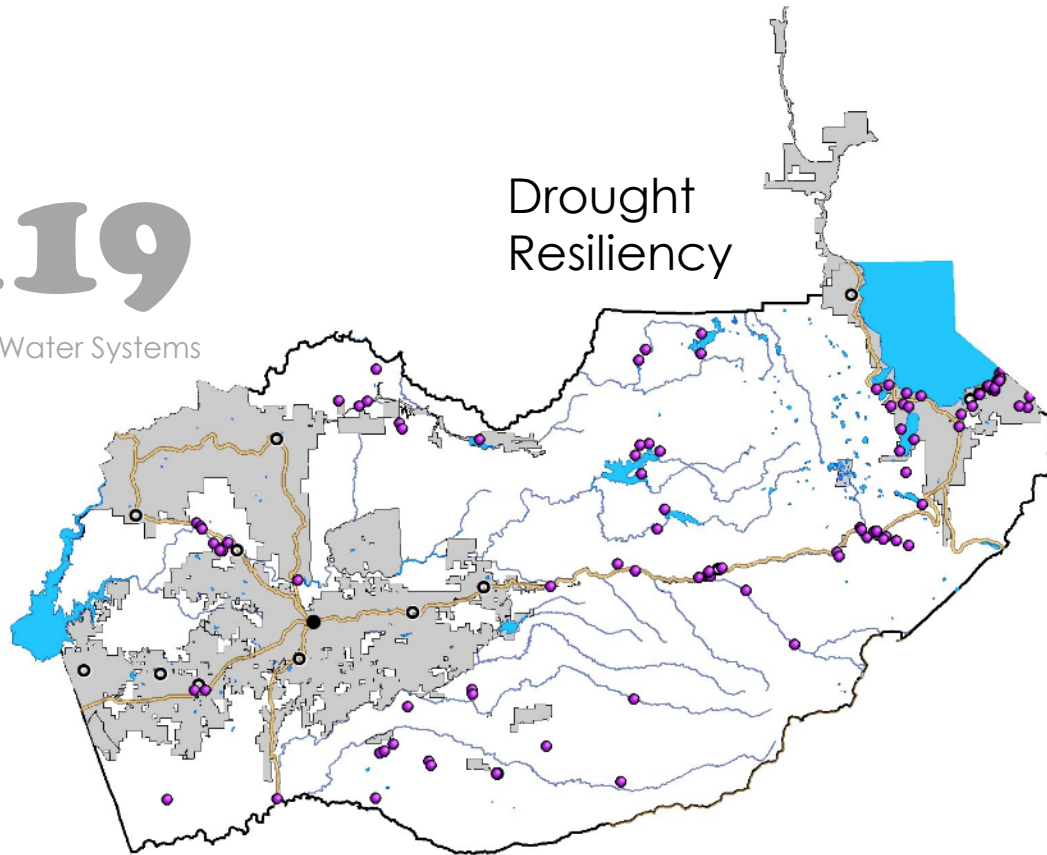


Highlights of Challenges Ahead

119

Small Water Systems

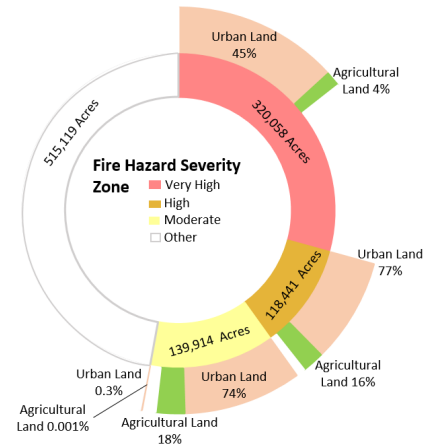
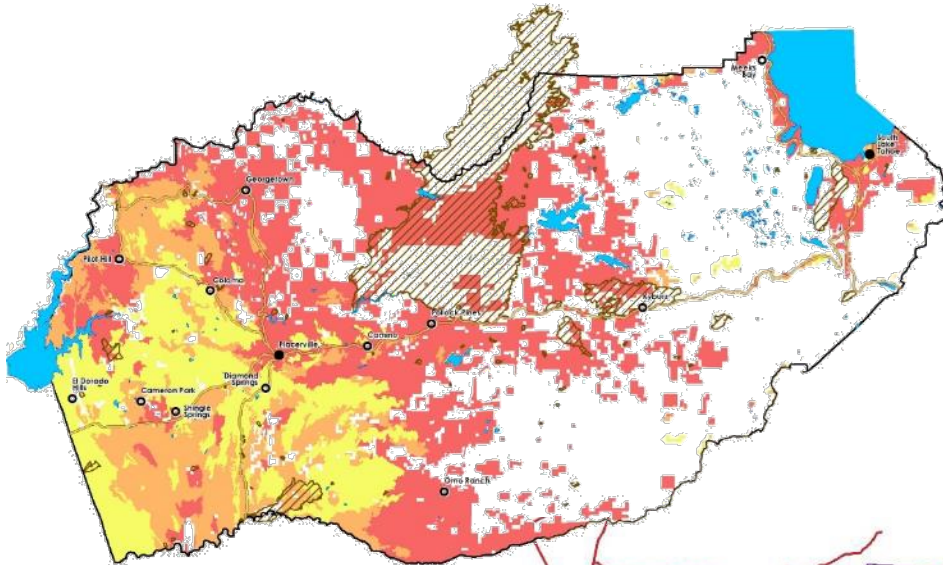
Drought Resiliency



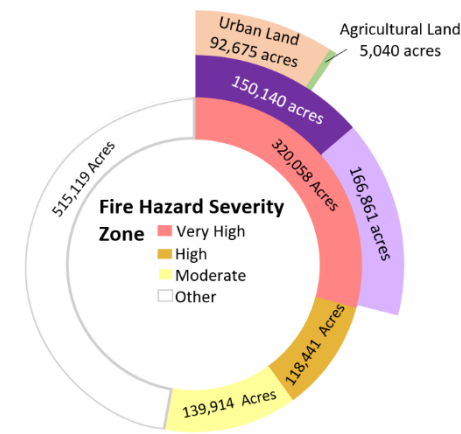
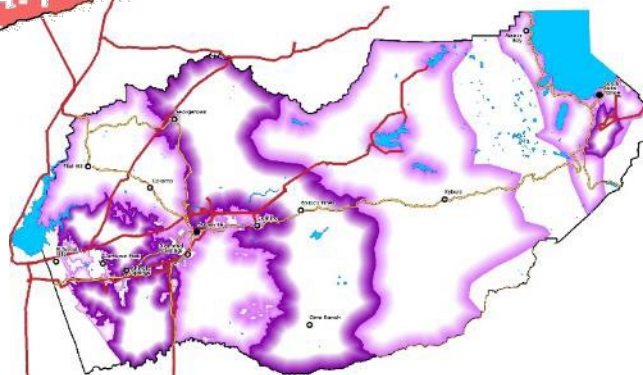
- Town
- City
- Small Water System
- Covered by Existing Drought Plans or Ordinances



Highlights of Challenges Ahead

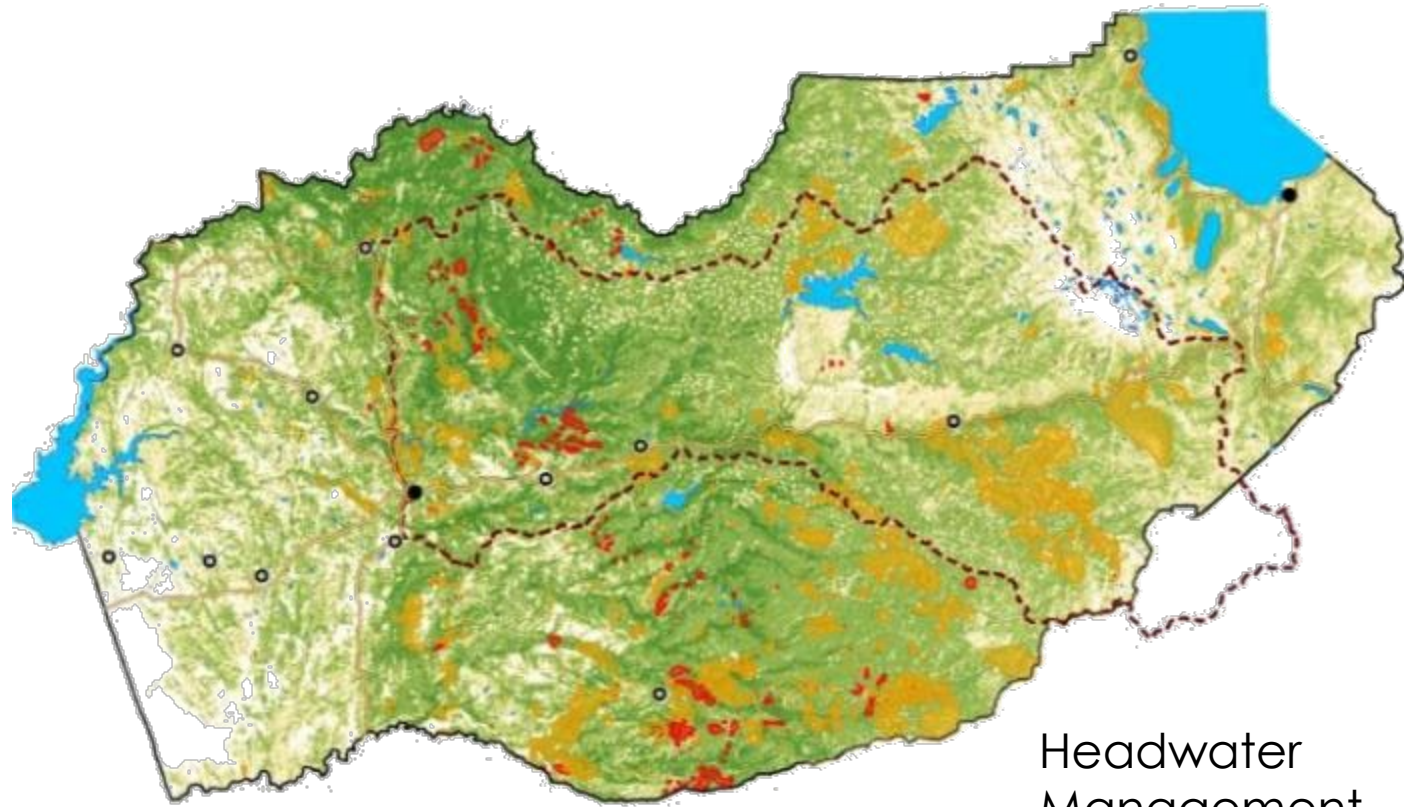


Consequence of Wildfires



● Town
 ● City
 — Transmission Line
 California Public Utility
 Consequence Fire Threat Tier
 Fire Threat Tier 2
 Fire Threat Tier 3

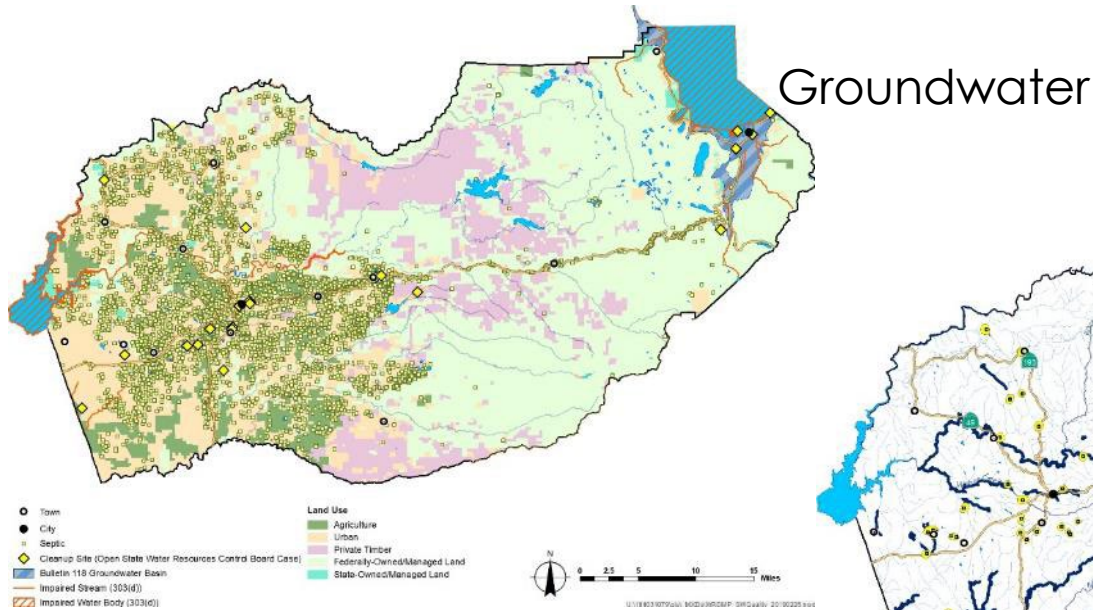
Highlights of Challenges Ahead



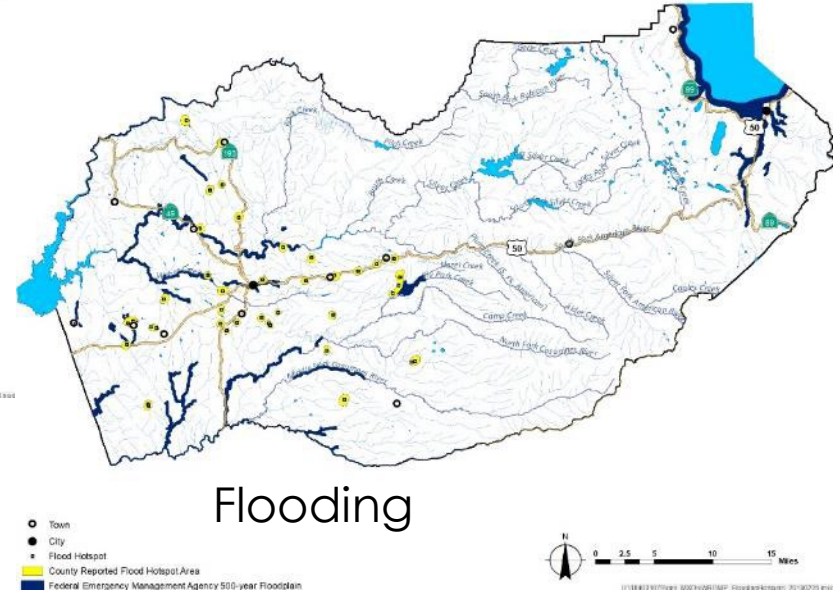
Headwater
Management

















Highlights of Challenges Ahead



Water Quality



Water Resource Related Challenges

Topic	Tahoe Basin	West Slope
Long-Term Water Supply-Demand Imbalance		
Vulnerability During Droughts		
Loss of Water Supply Due to Other Resource Management Practices		
Long-Term Water Quality Impacts Due to Wildfires		
Water Quality Impacts Due to Stormwater Runoff		
Water Quality Impacts to Groundwater from Septic Tanks and Agricultural Practices		
Loss of Life and Property Damages from Flooding		

PRELIMINARY

Section 4_Framing



- **Strategy through the lens of water resource management that is mindful of statewide and national trends**
 - Locally-grounded perspective
 - Tangible outcomes to improve conditions of water resources management
 - Integrated considerations that recognize connectivity among management of different resources
 - Collective efforts by the County and its water resource management agencies, weighted more on what may be missing or largely deficient where attention would be warranted

Section 5_Framing



- **5-year implementation with a long-term view**
 - Agency-specific and consistent with the following:
 - Roles and responsibilities
 - Principles of engagement
 - Specific roles during implementation:
 - Lead (active development-oriented actions)
 - Facilitate (valued-added assistance-oriented actions)
 - Support (coordinated participation-oriented actions)

