



## EL DORADO WATER RELIABILITY PROJECT NEEDED TO SUPPORT THE COUNTY'S GENERAL PLAN

El Dorado Water Agency (EDWA) is working to secure additional water to support the county's rural agricultural way of life through its proposed El Dorado Water Reliability Project (EDWRP). This project will ensure the county has a resilient, long-term water supply for the vibrant community development along the Hwy 50 corridor as well as planned agricultural growth on the West Slope.

This additional surface water is needed as the West Slope is dominated by geologic formations that store negligible groundwater. Securing additional surface water resources now is essential for ensuring the county is prepared to meet growing future water demands.

### Planning Shows Water Supply-Demand Imbalance on County's West Slope

EDWA evaluated current and future water demands for municipal, industrial, rural and agricultural needs, including the approximately 140 small water systems in the county that serve residents, school districts, and recreation areas, and more. Factoring planned growth, water conservation, anticipated regulatory changes, and climate change impacts, EDWA's analysis found that the projected need for additional long-term water supplies for the West Slope ranges from an average 60,000 acre-feet per year (AFY) to 86,000 AFY under varying climate change conditions.

EDWA's analysis shows that additional water is needed to fulfill the land uses contemplated by the county's General Plan. As such the Agency is working to secure surface water rights of up to 40,000 AFY from the upper tributaries of the American River. The surface water would help meet some, but not all, of the projected water demands associated with planned domestic, municipal, industrial, and agricultural uses identified in the county's adopted General Plan.

Three distinct water rights statutes (area of origin, county of origin, and watershed of origin) reassure water users in the geographic area where water originates that their existing and future water supply needs will be protected from impacts of exporting water out of the area.

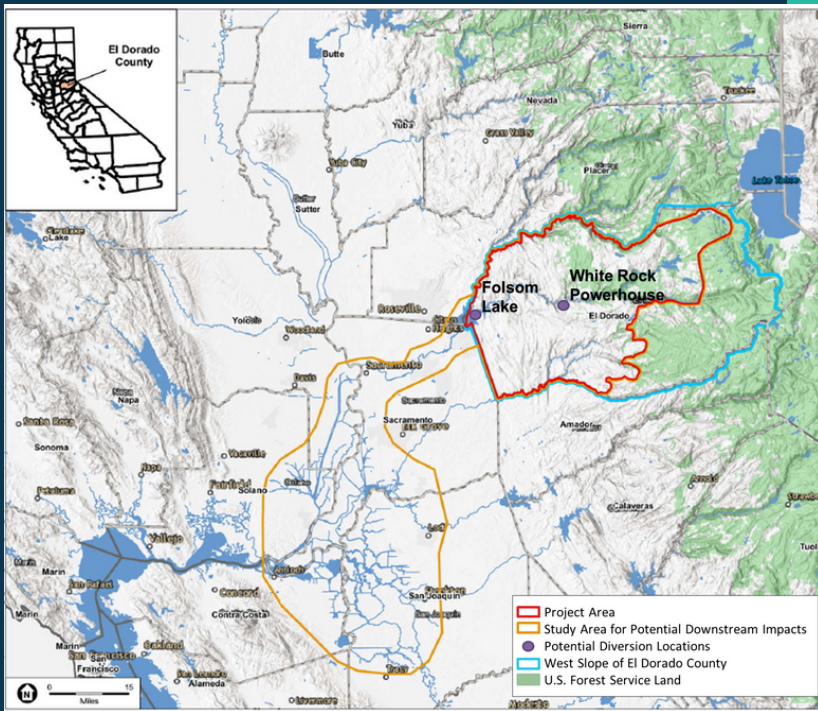


### El Dorado Water Agency Working to Secure the County's Water Future

EDWA is the El Dorado Designated Representative on behalf of the County of El Dorado, El Dorado Irrigation District, and Georgetown-Divide Public Utility District consistent with the 2005 El Dorado-SMUD Cooperation Agreement. As the lead agency, EDWA is preparing an Environmental Impact Report (EIR) to meet the requirements of California Environmental Quality Act (CEQA). This EIR is designed to evaluate the physical environmental effects of acquiring new consumptive water rights from the Upper American River.

The EIR will evaluate potential direct and indirect project impacts and cumulative environmental effects associated with the EDWRP. The EIR will analyze reasonably foreseeable impacts associated with project operations including water diversions, storage, and use. It will also evaluate surface water and groundwater resources, fisheries, aquatic and riparian biological resources, water supply and reliability, hydropower production, water quality and water-oriented recreation.





The project area is within the West Slope of the county and the study area includes areas downstream that are being analyzed for potential impacts by the proposed water diversions including Folsom Reservoir.

Consistent with the 2005 El Dorado – SMUD Cooperation Agreement (2005 Cooperation Agreement), the surface water would be stored and diverted at SMUD’s existing Upper American River Project (UARP) facilities and delivered to two locations: SMUD’s White Rock Powerhouse Penstock and the El Dorado County area of Folsom Lake where the South Fork American River meets the upper reach of the reservoir.

### Future Water Delivery Infrastructure Necessary

It is likely that new infrastructure would need to be built to treat and distribute all of the surface water on the West Slope. The investments and details regarding planning, locations, design, construction, and operations of infrastructure to use the new water supply are not known at this time. The resources to plan and proceed with this investment will be developed once the EDWRP is completed. While the environmental review of the current project includes a high-level description of the potential effects of new water supply infrastructure, specific and project-level environmental impacts would be evaluated in future environmental analyses when details are known and the impacts can be accurately assessed.

### Public Participation Encouraged in Environmental Review Process

EDWA previously developed a Notice of Preparation (NOP) for the EIR and published it in December 2017. The NOP was circulated for comment for 55 days and two public scoping meetings were held in January 2018. The public scoping meetings provided a forum for the public to learn about the proposed project and provide comments on the proposed scope of the EIR analysis. Comment letters received in response to the NOP were considered during preparation of this Draft EIR.

The public will have additional opportunities to participate in the environmental review process during the public review period of the Draft EIR. Information about the release of Draft EIR and ways to participate will be available at [edwateragency.org](http://edwateragency.org)

**Contact**  
**El Dorado Water Agency**  
 edcwa@edcgov.us  
 (530) 621-5392  
 edwateragency.org

