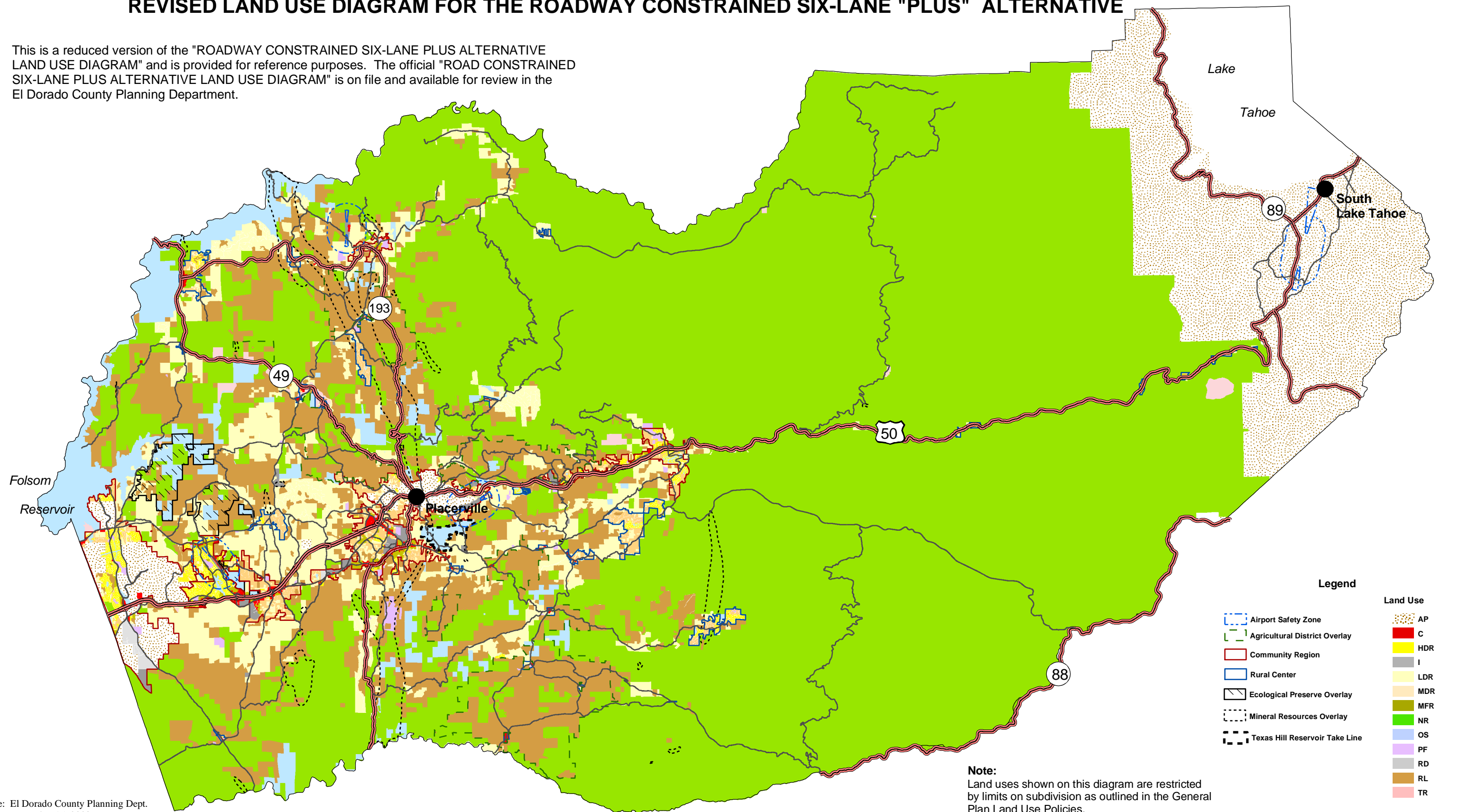


Figure LU-1

REVISED LAND USE DIAGRAM FOR THE ROADWAY CONSTRAINED SIX-LANE "PLUS" ALTERNATIVE

This is a reduced version of the "ROADWAY CONSTRAINED SIX-LANE PLUS ALTERNATIVE LAND USE DIAGRAM" and is provided for reference purposes. The official "ROAD CONSTRAINED SIX-LANE PLUS ALTERNATIVE LAND USE DIAGRAM" is on file and available for review in the El Dorado County Planning Department.



Source: El Dorado County Planning Dept.
December 15, 2003

Note:
Land uses shown on this diagram are restricted by limits on subdivision as outlined in the General Plan Land Use Policies.