

STATE OF CALIFORNIA CONSOLIDATED DEBRIS REMOVAL PROGRAM



PROGRAM OBJECTIVES

- Protect public health and public safety
- Assist survivors in rebuilding or reoccupying their property
- Supporting community recovery



FRAMEWORK



Cal OES
GOVERNOR'S OFFICE
OF EMERGENCY SERVICES



CalEPA
California Environmental
Protection Agency

PHASE 1



DTSC
Department of Toxic
Substances Control

PHASE 2

CalRecycle

PHASE 1

- Removal of household hazardous wastes (HHW) and bulk asbestos
- Led by DTSC, under a Cal OES Mission Task
- Performed by DTSC stand-by emergency response contractors
- Executed pursuant to local health officer's order; no enrollment required
- If direct federal assistance is warranted, can be performed by the USEPA



PHASE 2: Overview

- Removal of remaining structural debris and eligible hazard trees
- Led by interagency Incident Management Teams from CalRecycle and Cal OES, in coordination with local government
- Performed by specialized contractors and environmental firms contracted through CalRecycle



PHASE 2: Eligibility and Enrollment

- Program requires special approval from Cal OES
- Designed to remove debris from residential parcels, but can include public and commercial parcels
- Property owners must “opt-in” through a Right-of-Entry Permit administered by local governments
- Local jurisdictions manage “opt-out” regulated cleanup options

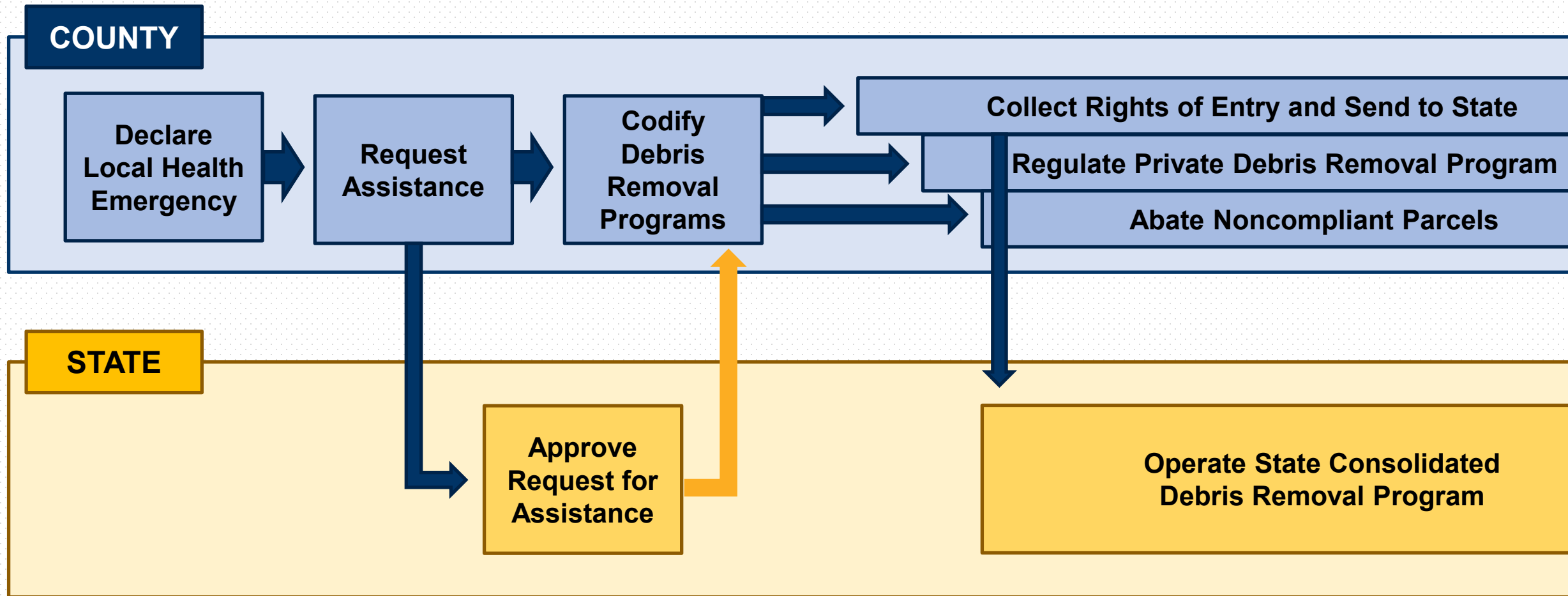


PHASE 2: Operations

- **Assessments:** Site Assessment, Asbestos Assessment, Hazard Tree Assessment
- **Debris Removal:** Removal of structural ash, debris, and contaminated soil, recycling of metal and concrete
- **Soil Analysis:** Testing of remaining soil against cleanup goals, additional excavation if needed, erosion control
- **Hazard Tree Removal:** Felling and removal of eligible hazard trees



PHASE 2: Sequence of Delivery



PHASE 2: Sequence of Delivery (continued)

COUNTY

Collect Rights of Entry and Send to State

Regulate Private Debris Removal Program

Abate Noncompliant Parcels

Approve Properties for Rebuilding

Collect Eligible Insurance Proceeds and Send to State

STATE

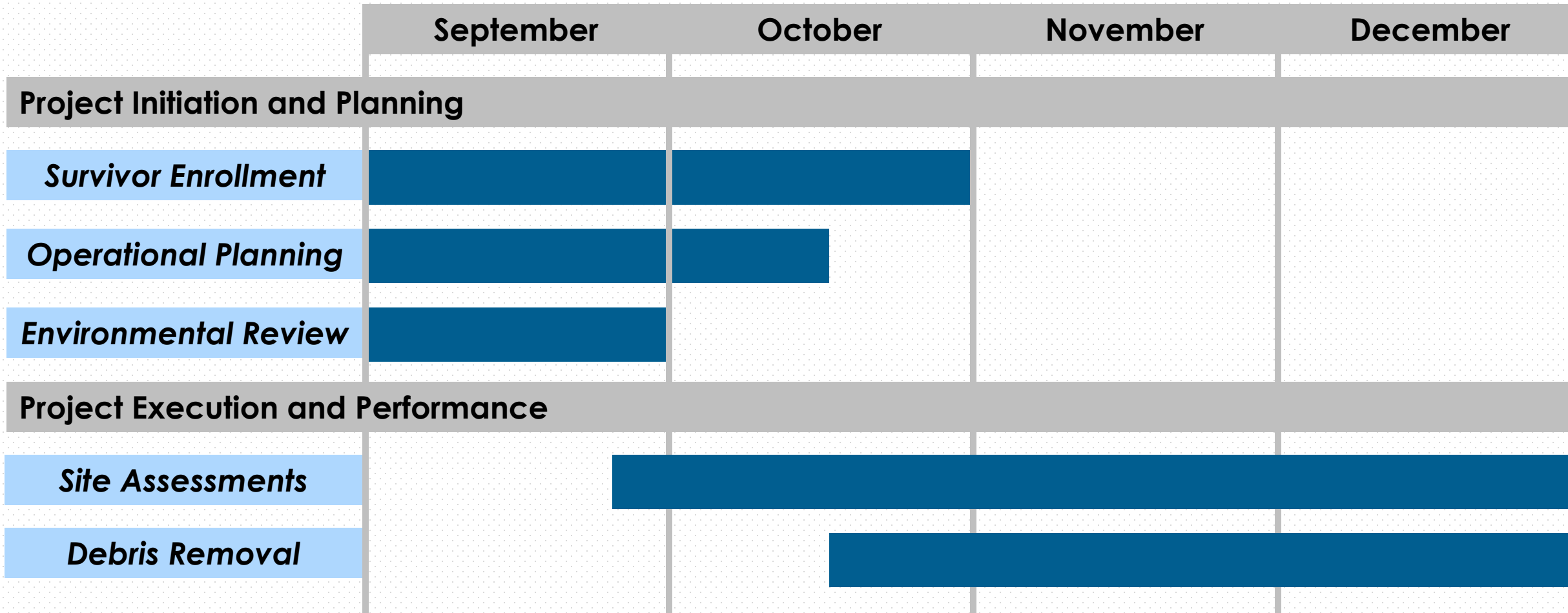
Operate State Consolidated Debris Removal Program

Notify County of Property Completion

Send County Individual Property Cost Reports

PHASE 2: Project Schedule

PROJECT INITIATION, PLANNING,
EXECUTION AND PERFORMANCE PHASES



Note: All timelines are estimates and subject to change.

PAST OPERATIONS

- **2018 Camp Fire**
 - 11,000 structures removed
 - 98,000 hazard trees currently being removed by separate State Hazard Tree Removal Program
- **2020 Statewide Fires**
 - 3,700 destroyed structures removed
 - 120,000+ hazard trees currently being removed

