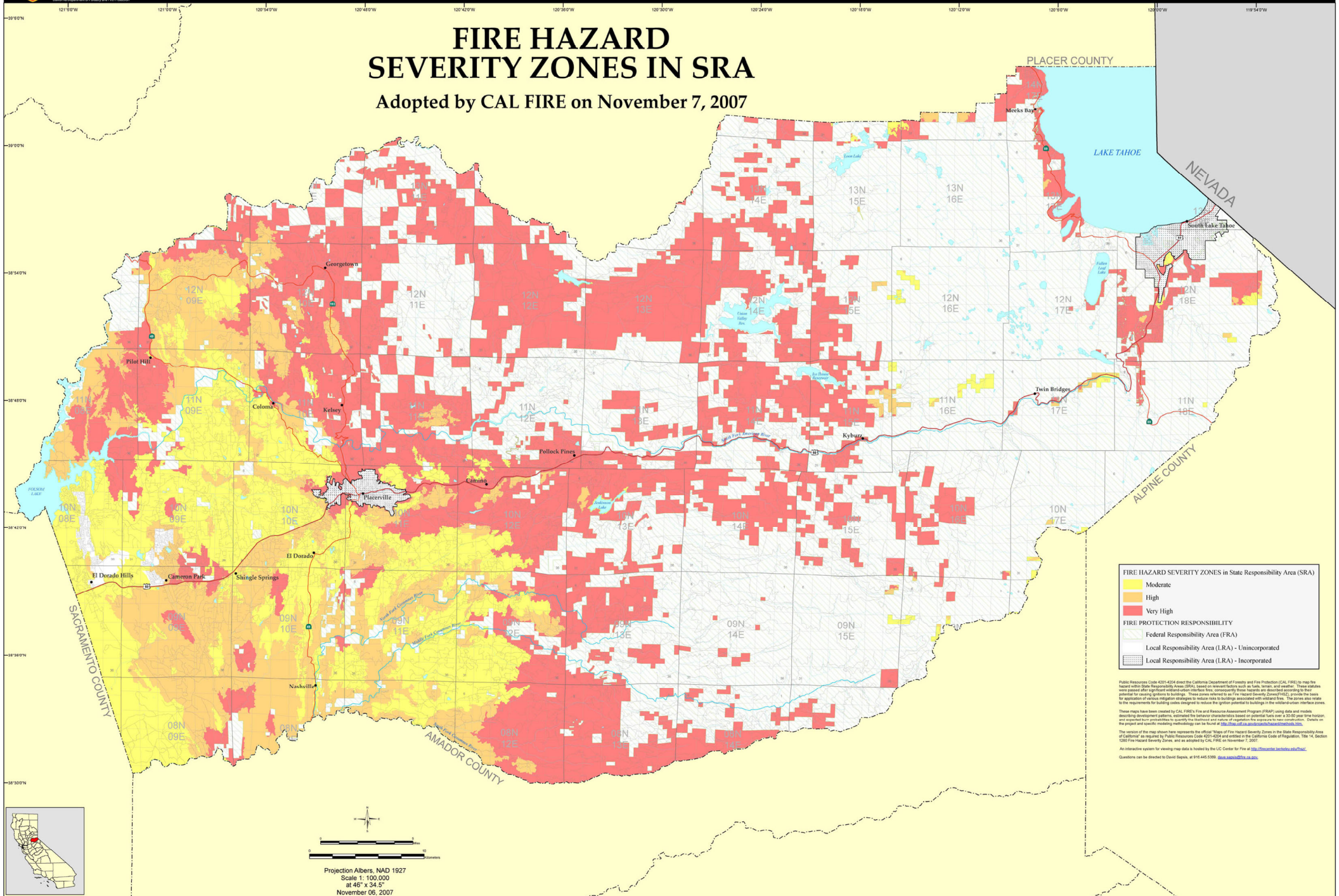


FIRE HAZARD SEVERITY ZONES IN SRA

Adopted by CAL FIRE on November 7, 2007



FIRE HAZARD SEVERITY ZONES in State Responsibility Area (SRA)

- Moderate
- High
- Very High

FIRE PROTECTION RESPONSIBILITY

- Federal Responsibility Area (FRA)
- Local Responsibility Area (LRA) - Unincorporated
- Local Responsibility Area (LRA) - Incorporated

Public Resources Code 4201-4204 direct the California Department of Forestry and Fire Protection (CAL FIRE) to map the hazard within State Responsibility Areas (SRA). Essential relevant factors such as fuels, terrain, and weather. These factors were analyzed after rigorous evaluation to produce this map. Unincorporated areas are shown in light gray. These areas are subject to fire hazard severity zoning. The zones also relate to application of various mitigation strategies to reduce risks to buildings associated with wildfire fire. The zones also relate to the requirements for building codes designed to reduce the ignition potential to buildings in the unincorporated interface areas.

These maps have been created by CAL FIRE's Fire and Resource Assessment Program (FRAP) using data and models resulting from various projects. The hazard characteristics shown on this map are based on a 300-foot resolution and are subject to change as more data becomes available. The map is intended for informational purposes only and is not intended to be used for any other purpose. Details on the project and specific modeling methodology can be found at <http://www.cdffr.com/landuse/landuse.html>.

The version of the map shown here represents the official "Map of Fire Hazard Severity Zones in the State Responsibility Area of California" as required by Public Resources Code 4201-4204 and enforces the California Code of Regulations, Title 14, Section 1250 Fire Hazard Severity Zones, and as adopted by CAL FIRE on November 7, 2007.

An interactive system for viewing map data is hosted by the UC Center for Fire at <http://firecenter.ucdavis.edu/ehp/>.

Questions can be directed to David Seppa, at 916.445.0369. dseppa@cdffr.ca.gov

Projection: Albers, NAD 1927
 Scale: 1:100,000
 at 46° 1' 34.5" N
 November 06, 2007



The State of California and the Department of Forestry and Fire Protection make no representations or warranties regarding the accuracy of data or maps. Neither the State nor the Department shall be liable under any circumstances for any direct, special, incidental, or consequential damages with respect to any claim by any user or third party on account of, or arising from, the use of data or maps.

Obtain FRAP maps, data, metadata and publications on the Internet at <http://frap.cdf.ca.gov>
 For more information, contact CAL FIRE-FRAP, PO Box 942426, Sacramento, CA 94244-2460, (916) 327-3939.

Arnold Schwarzenegger, Governor,
 State of California
 Mike Chrisman, Secretary for Resources,
 The Resources Agency
 Ruben Grigalva, Director,
 Department of Forestry and Fire Protection

MAP ID: FHSZ_MAP
 DATA SOURCES
 CAL FIRE Fire Hazard Severity Zones (FHSZS06_3)
 CAL FIRE State Responsibility Areas (SRA05_5)
 CAL FIRE Incorporated Cities (Incorp07_3)
 PLSS (1:100,000 USGS, Land Grants with CAL FIRE grid)