

**EDSWAC Meeting
January 11, 2016
El Dorado County Staff Updates**

1. Grants

- a. Waste Tire Amnesty Grant Awarded: Grant allows for free disposal/recycling of waste tires delivered to Waste Tire Amnesty Events by El Dorado County Residents. Contracts with EDD and STR are almost complete. We expect:
 - Events at EDD to start this month (1/16/2016)
 - Events at STR to start in February (2/21/16)
 - Events will take place on the third Saturday of each month until the grant term ends (4/15/2017) or funds are exhausted (whichever occurs first).
 - Once contracts are effective EMD will post information on our webpage (<http://www.edcgov.us/EMD/>) and will begin work to advertise the events in local newspapers.
- b. City/County Payment Program Grant Awarded: Supports Roadside Litter Abatement Program funding.
- c. Oil Payment Program 6 Grant Awarded: Supports HHW and used Oil collection program.

2. Construction and Demolition

- a. On today's Agenda.

3. Franchise Management

- a. All new agreements are complete and approved by the Board.
- b. EMD is working on the audits of STR and EDD.

4. Solid Waste Management Plan Update

- a. On today's Agenda.

5. Meeting AB 939 / AB 341 Goals / SB1016 Graph

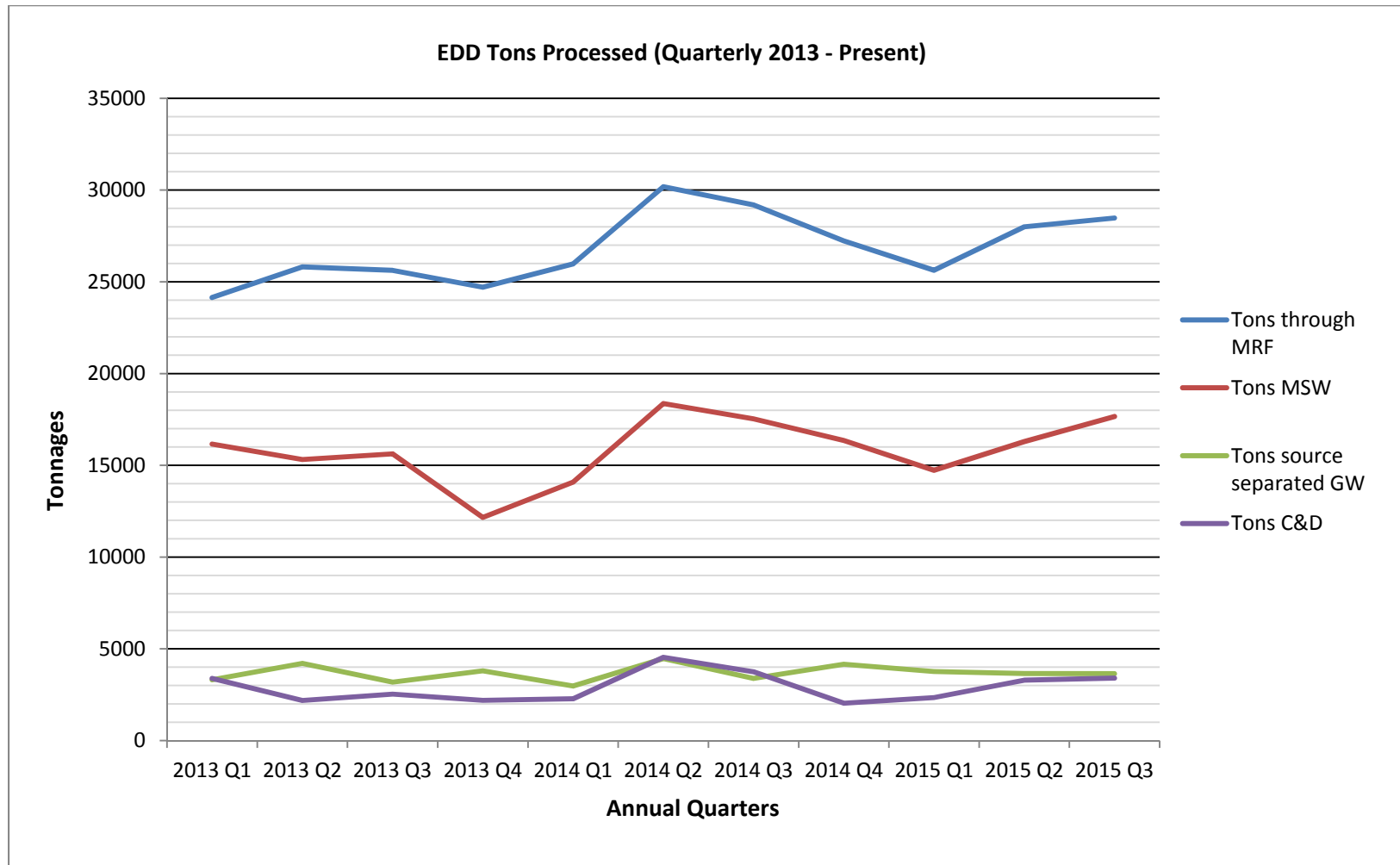
- a. PARIS Codes Narrative: Attachments
- b. Disposal/Diversion Data: Attachments

6. Enhancement Office Recycling

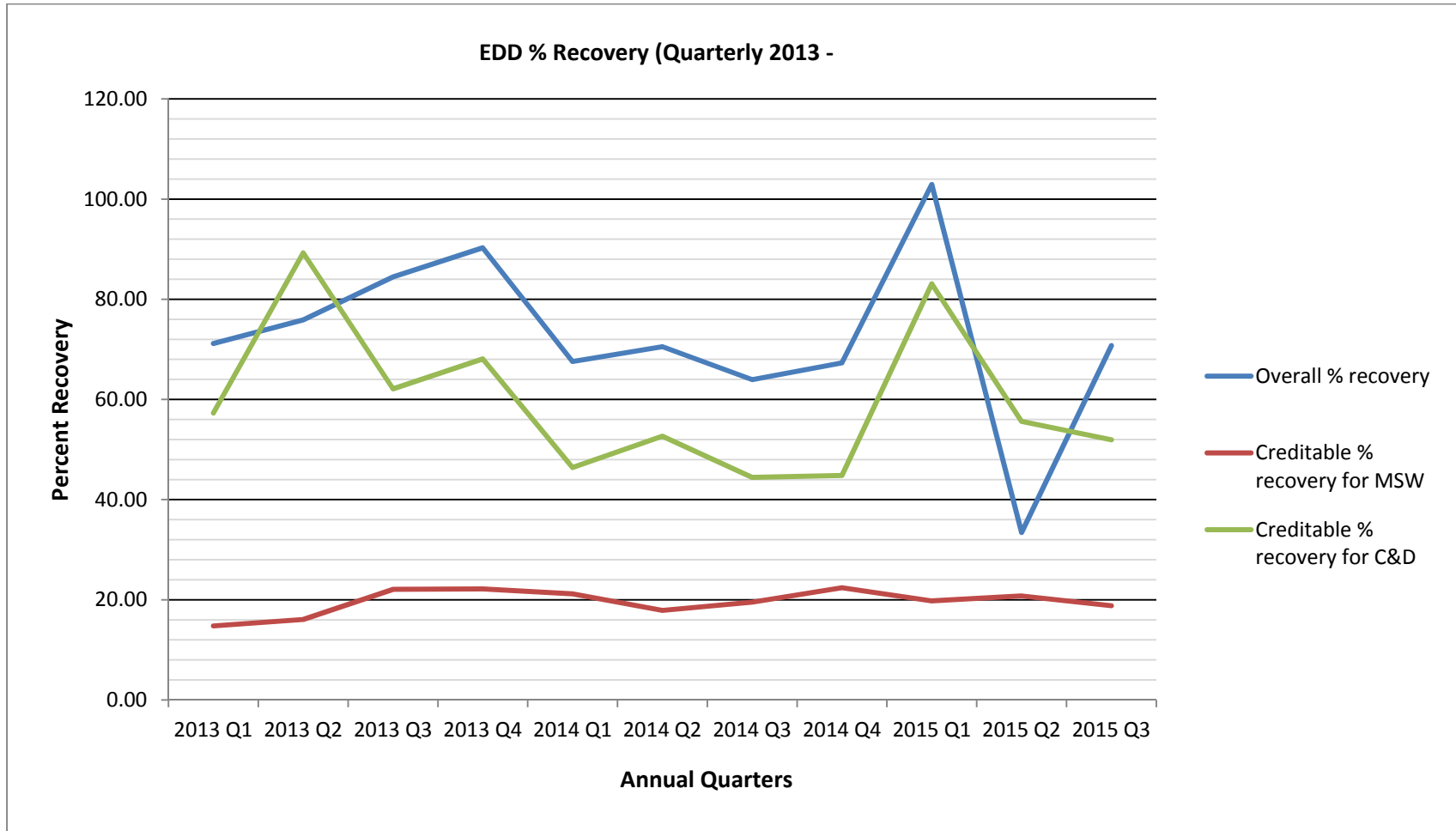
- a. EMD has talked to facilities and will be meeting with Department Heads to inform other County Agencies of the plan to enhance County Office Recycling. Then we will work with facilities to develop an enhanced plan.

7. Legislative / Regulatory Update

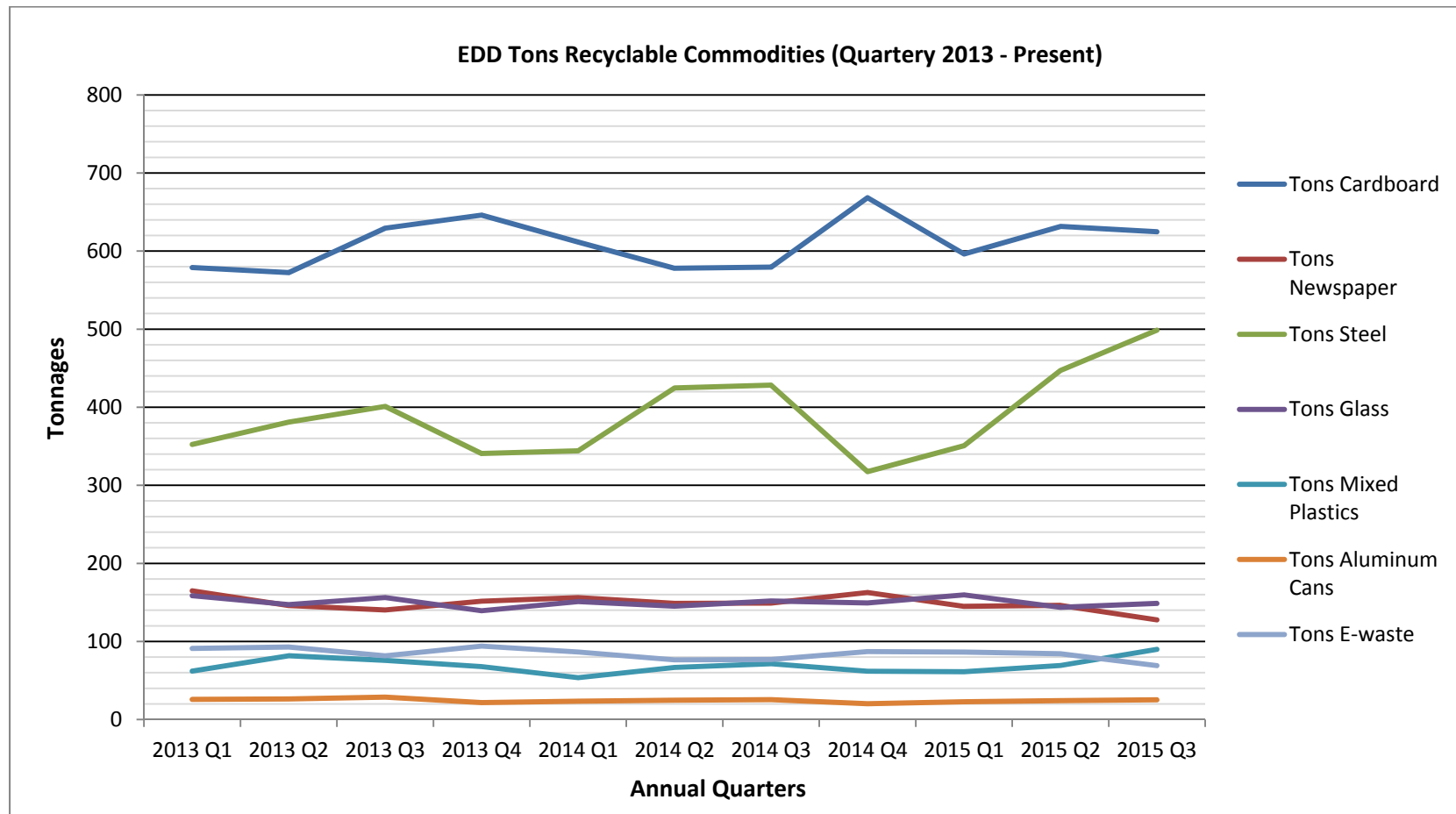
EDD Tons Processed (Quarterly 2013- Present)											
	2013 Q1	2013 Q2	2013 Q3	2013 Q4	2014 Q1	2014 Q2	2014 Q3	2014 Q4	2015 Q1	2015 Q2	2015 Q3
Tons through MRF	24144.16	25814.06	25626.49	24704.8	25978.42	30186.04	29189.28	27233.6	25631.08	27994.36	28478.52
Tons MSW	16157.8	15315.15	15620.9	12160.65	14086.63	18367.68	17529.61	16350.2	14730.89	16291.22	17663.82
Tons source separated GW	3312.17	4207.57	3186.04	3800.29	2970.94	4467.73	3385.05	4159.87	3766.14	3649.31	3645.79
Tons C&D	3390.26	2187.19	2533.15	2191.8	2271.91	4538.25	3749.84	2032.56	2345.71	3287.45	3402.07



EDD % Recovery (Quarterly 2013- Present)											
	2013 Q1	2013 Q2	2013 Q3	2013 Q4	2014 Q1	2014 Q2	2014 Q3	2014 Q4	2015 Q1	2015 Q2	2015 Q3
Overall % recovery	71.18	75.87	84.46	90.27	67.57	70.54	63.95	67.30	102.91	33.43	70.76
Creditable % recovery for MSW	14.79	16.07	22.08	22.17	21.17	17.89	19.52	22.39	19.77	20.77	18.81
Creditable % recovery for C&D	57.28	89.28	62.11	68.10	46.40	52.66	44.42	44.81	83.10	55.62	51.95



EDD Tons Recyclable Commodities (Quarterly 2013 - Present)											
	2013 Q1	2013 Q2	2013 Q3	2013 Q4	2014 Q1	2014 Q2	2014 Q3	2014 Q4	2015 Q1	2015 Q2	2015 Q3
Tons Cardboard	578.88	572.35	629.33	646	611.5	578.01	579.34	668.3	596.26	631.47	624.67
Tons Newspaper	164.78	145.99	140.28	151.5	156.07	148.93	149.01	162.76	144.9	146.16	127.63
Tons Steel	352.36	380.87	401	340.65	344.08	424.57	428.22	317.49	350.64	447.12	498.7
Tons Glass	158.59	147.28	156.17	139.33	150.94	145.14	151.72	149.24	159.69	143.62	148.6
Tons Mixed Plastics	62.11	81.55	75.63	67.84	53.55	66.77	71.47	61.95	61.2	69.18	89.93
Tons Aluminum Cans	25.66	26.34	28.52	21.68	23.36	24.74	25.31	20.15	22.69	24.2	25.22
Tons E-waste	90.98	92.73	81.63	93.99	86.56	76.45	76.71	87.1	86.22	84.08	69.06



El Dorado Disposal Program Report

PARIS Code	Description	11/9/2015	1/11/2016
1000	Grasscycling	Due to drought this program has been delayed, will notify EDSWAC when we resume.	Due to drought this program has been delayed, will notify EDSWAC when we resume.
1010	Backyard & On-Site Composting		We will be placing a link on our website to the counties page that goes over composting.
1020	Business Waste Reduction	We will begin mailing out our Annual letter descibing AB341 to our customers that are non compliant. We just received outreach material for AB1826. We will begin to distribute it starting with our customers with the highest service level and work our way down the list.	Businesses have been inquiring about pallet recycling. We will be discussing options for our customers. We will be adding additional business waste prevention ideas to our assessments.
1030	Procurement		Make sure each internal department is recycling to full potential. Renewed focus on purchasing recycle content materials. Share with local jurisdictions.
1050	Government Source Reduction		Discuss with each municipality their reduction, reuse and recycling programs. Ongoing program.
1060	Material Exch/Thrift Shops	On-going program, collected 4,48 pounds of textiles at our recyding centers for the quarter.	On going program with our Thrift Stores. We no longer have USAgian containers at our buy back centers. We will be looking for other companies to partner with.
2000	Residential Curbside	Cart roll out complete for Amador. Sending trifold with options for customers in Area C(Sierra Disposal). Anticipate all carts to be delivered in Area C by end of December.	The cart roll out for area C is almost complete. As of 1-4-15 we still have a small amount of customers that are waiting on recycle carts. Efforts remain ongoing to eliminate problem group areas.
2010	Residential Drop-Off	September 106.74 tons were collected. October 110.17 tons were collected	November 86.74 tons were collected. December 79.07 tons were collected.
2020	Buyback Centers	Sept. 452 feet of fluorescent tubes and 325 pounds of batteries were collected. October, 524 feet of fluorescent tubes and 418 pounds were collected.	We operate 3 Buy Back Centers located between El dorado Hills and Placeville. El Dorado Hills and Cameron Park Centers are open Tuesday thru Saturday from 9:30am to 4:00pm. Placerville 8:30 am to 4:00pm. The services provided at each center can be found at http://eldoradodisposal.com/MRF.aspx November 265 feet of fluorescent tubes and 225 pounds of batteries were collected. December 184 feet of fluorescent tubes and 319 pounds were collected.
2030	Commercial On-Site Pickup	On going program	We are mailing out a updated Recycle Material List to all of our commercial customers . It will continue over the next few months. We will be reaching out to all of our new Commercial businesses in the Sierra service area. Education on AB341 and AB1826 . This will be ongoing for the next few months.
2040	Commercial Self-Haul		
2050	School Recycling	Continue to work with Sutters Mill and Gold Trail school's recycle program.	We have been reaching out to the Schools in the Sierra area. We will provide them with educational material and offer assessments.
2060	Government Recycling	On going program	On going program.Partnering with county to educate all departments within county about recycling opportunities.
2070	Special Collection Seasonal	Curbside events: CP held 9/19- 23.86 tons trash, 3.36 tons of yw, 1.13 tons recycling. EDH held 10/3- 15.43 tons of trash, 2.49 tons of yw and 4.14 tons of recycling. Placerville held 10/17 - 41.25 tons trash and 5.07 tons of yw.	We are currently putting together the calander for 2016 special collection events.

2080	Special Events	October 24th had a booth at the Cameron Park Fall Festival. Educated public on recycling, do and don't's. Was over 250 present at the event. Had games for the children and give aways.	Our next calendared event is the Kids Expo in March. We ware looking into new events for 2016.
2090	Other Business Recycling		
3000	Residential Curbside GW	Curbside collections for yard waste: County had 142.85 tons, EDH had 36.71 tons, Cameron Park had 38.71 tons.	We continue to offer bi-weekly greenwaste pick up as part of our services. No current greenwaste events in the next 2 months.
3010	Residential Self-Haul GW	County first yard waste drop off had 1.88 tons.	No current greenwaste events in the next 2 months. Customer service continues to inform customers on what the Fire Safe Council offers. Customers receive a discounted rate at the MRF for green waste that is clean and not bagged.
3020	Commercial Onsite GW Pickup		
3040	Food Waste	We will be reaching out to the grocery stores to bring awareness of AB 1826. Created a food waste brochure to hand out to commercial accounts.	We will be reaching out to the grocery stores to bring awareness of AB 1826. Created a food waste brochure to hand out to commercial accounts.
3060	Government Composting		
3070	Other Composting		
4010	Sludge	City of Placerville had 106.55 and October 125.64 tons. Red Hawk had 10 tons in September and 9.10 tons in October.	Placerville had 125.01 tons for November and 141.67 for December. Red Hawk had 10.46 tons for November and 22.42 tons for December. Union Mine had 93.58 tons for November and 89.76 tons for December.
4020	Tires	Sept. 11.84 tons were shipped. October 0 tons were shipped	November we did not ship any tires. December 15.97 tons were shipped.
4030	White Goods	243 appliances were received in Sept. and, 270 appliances were received in October	In November we recieved 244 appliances. In December we recieved 181 appliances.
4040	Scrap Metals	Sept. 151.79 tons were recovered and shipped out. October 149.20 tons were recovered and shipped out.	November 130.02 tons were recovered and shipped out. December 129.52 tons were recovered and shipped out.
4050	Mixed Wood	Sept. 313.58 tons were recovered and shipped out. October 409.21 tons were recovered and shipped out.	November 243.91 tons were recovered and shipped out. December 259.42 tons were recovered and shipped out.
4060	Asphalt/Concrete Mixed	Sept. 125.25 tons were shipped out. October 167.38 tons were recovered and shipped out.	November 163.58 tons were shipped out. December 192.32 tons were recovered and shipped out.
4090	Rendering/Grease	N/A	N/A
5000	Electronic	Sept. 22.01 tons were collected and shipped out. October 20.32 tons were collected and shipped out.	EDD has a website to educate the residents of the El Dorado County. This website is regularly updated to inform customersof the latest news regarding recycling. This information is produced for both residential customers and commercial customers. EDD is also on Facebook and Twitter.

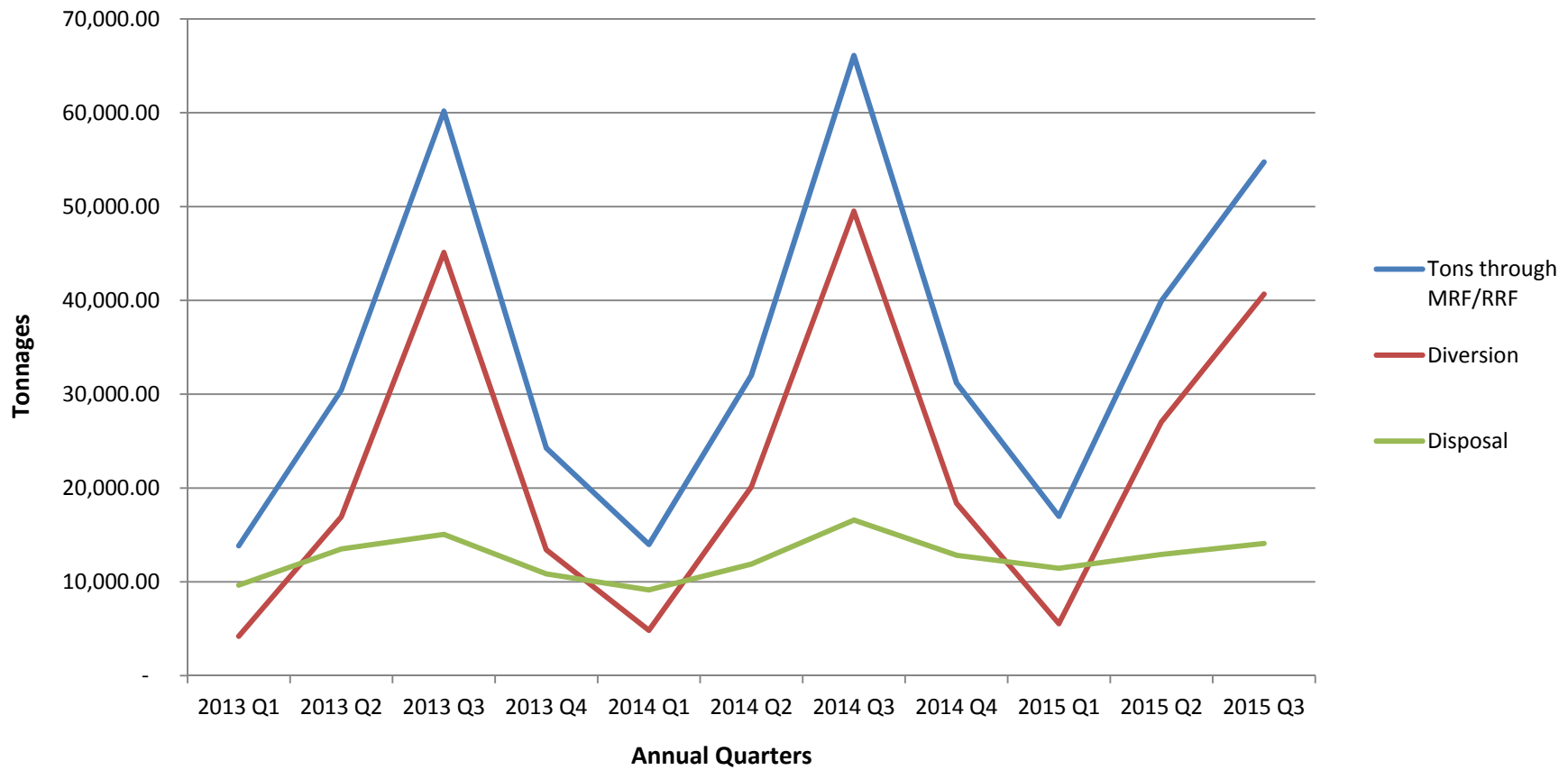
5010	Print	Trifold for AREA C will be mailed in November. Calendar and vouchers will be mailed in December.	Informational brochures, pamphlets, and fact sheets on source reduction, recycling, and composting are distributed to the public. EDD also publishes a bi-annual newsletter in the local paper and on its website. Calendars of scheduled pickups with do's and don'ts for recycling and green waste are mailed to residents each year. Welcome packets are produced and mailed to each new customer including recycling materials which go to residential and commercial customers. Information is also published on the bills produced monthly and bi monthly. Multi media on going. One Persons Trash Winter Edition insert was sent January 1st. View it at http://eldoradodisposal.com/files/2016_Winter_Newsletter.pdf
5020	Outreach	Multi media on going. Working on One Persons Trash Winter Edition. Insert will be sent January 1st.	EDD educates Placerville residents at the Home and Garden show and El Dorado County Fair about home composting, worm bins, community gardens and other types of recycling. EDD provides waste audits for their commercial and multifamily customers. EDD has an educational garden behind their main office on Truck Street for tours for any group interested in learning about gardening, water conservation, vermiculture, composting, and other types of recycling for benches, tires, bird feeders, etc.
5030	Schools (education and curriculum)	Met over 500 students in October to discuss recycling options, projects or updates. Attended Markham School, Jackson Elementary, Gold Trail and Sutter's Mill.	EDD sends a letter to all the schools reminding them that they provide educational programs and curriculum. They also provide tours of the MRF. EMD's MRF tour includes a look at their upcycling, composting/vermiculture garden.
6010	Economic Incentives		EDD offers variable cart sizes with rates to incentivize the reduction of the wastestream. Recycling is encouraged with extra carts for free. Commercial customers can recycle for free and reduce their trash service. Discounted rates are available for all seniors. EDD also offers the Recycle Bank program to some service areas as another way to incentivize recycling through a point based program where customers earn valuable coupons and gift certificates.
6020	Ordinances		
6030	Other Policy Incentive		
7000	MRFs		
7010	Landfill Diversion		
7020	Transfer Station Diversion		
7030	Compost Facility		
7040	ADC		
8020	Transformation		

9000	HHW Permanent Facility	August had 820 customers use the HHW facility and 1005 customers in October.	Our HHW facility is located at the MRF. Drop off days and times are Friday thru Sunday from 9:00am to 4:00 pm. More information can be found at http://eldoradodisposal.com/MRF.aspx . November had 699 customers use the HHW facility and 583 customers in December.
9010	HHW Mobile/Periodic		
9030	HHW Waste Exchange		
9040	HHW Education Programs		Multi media, EDD's website, printed material in customers welcome packets and MRF brochures.
9045	Electronic Waste	Processor available for any electronic waste events.	We have free E -Waste drop off bins located at our Buy Back centers and at the MRF. November 22.39 tons were collected and shipped out. December 25.32 tons were collected and shipped out.

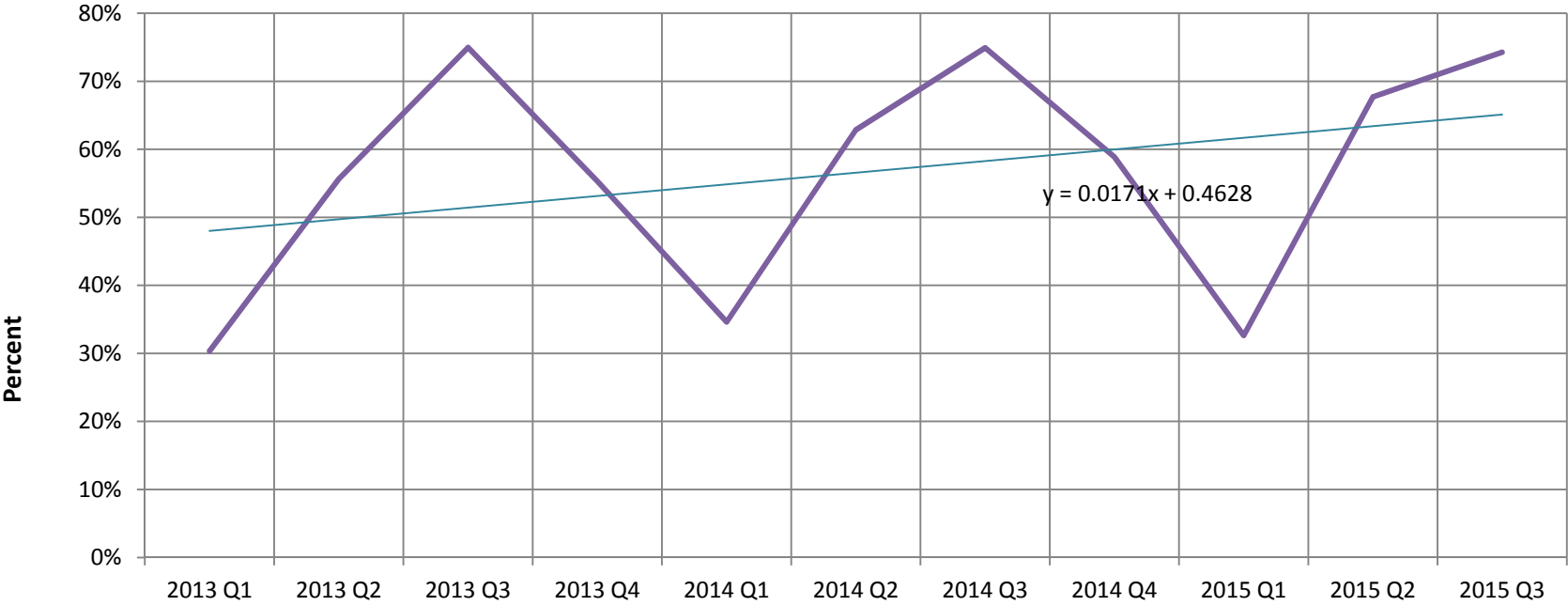
STR Tons Processed Quarterly (2013-Present)

	2013 Q1	2013 Q2	2013 Q3	2013 Q4	2014 Q1	2014 Q2	2014 Q3	2014 Q4	2015 Q1	2015 Q2	2015 Q3
Tons through MRF/RRF	13,848.00	30,441.40	60,170.80	24,258.70	13,981.60	32,021.20	66,087.70	31,201.70	16,980.30	39,972.60	54,752.20
Diversion	4,201.70	16,933.00	45,105.00	13,416.90	4,840.30	20,123.20	49,504.50	18,372.60	5,539.80	27,056.40	40,656.00
Disposal	9,646.30	13,508.40	15,065.80	10,841.80	9,141.30	11,898.00	16,583.20	12,829.10	11,440.30	12,916.20	14,096.10
% Diversion	30%	56%	75%	55%	35%	63%	75%	59%	33%	68%	74%

STR Tons Processed (Quarterly 2013 - Present)



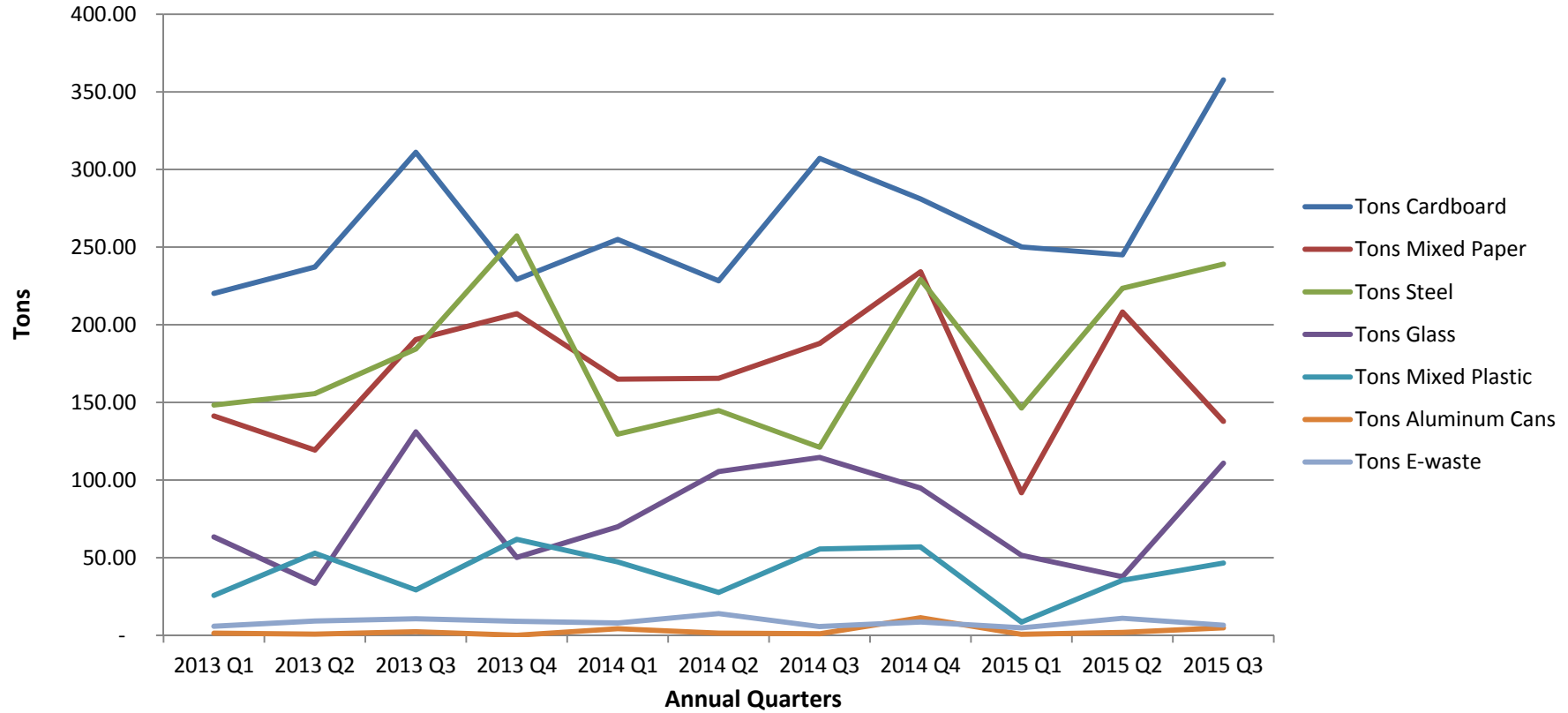
STR % Diversion Quarterly (2013 - Present)



STR Tons Recyclable Commodities (Quarterly 2013 - Present)

	2013 Q1	2013 Q2	2013 Q3	2013 Q4	2014 Q1	2014 Q2	2014 Q3	2014 Q4	2015 Q1	2015 Q2	2015 Q3
Tons Cardboard	220.20	237.20	311.00	229.20	254.90	228.30	307.10	281.00	250.10	245.00	357.70
Tons Mixed Paper	141.20	119.30	190.50	207.10	164.90	165.50	187.90	234.10	91.80	208.20	137.80
Tons Steel	148.30	155.60	184.40	257.20	129.50	144.70	121.10	229.10	146.40	223.50	239.00
Tons Glass	63.30	33.50	131.00	50.20	69.90	105.40	114.50	94.80	51.50	37.70	110.80
Tons Mixed Plastic	25.70	52.90	29.20	61.80	47.20	27.60	55.50	56.90	8.50	35.40	46.50
Tons Aluminum Cans	1.30	0.70	2.20	-	4.20	1.30	1.00	11.30	0.60	1.80	4.80
Tons E-waste	5.74	9.10	10.64	9.00	7.88	13.95	5.57	8.54	4.75	10.94	6.49
Tons C&D	-	8,571.70	35,720.00	6,650.60	50.60	11,978.00	37,375.00	9,469.90	481.70	19,167.00	30,925.80

STR Tons Recyclable Commodities (Quarterly 2013 - Present)



STR Tons C&D (Quarterly 2013 - Present)

