

## Section 4.2

# Tahoe Environmental Improvement Program Individual Project Summaries



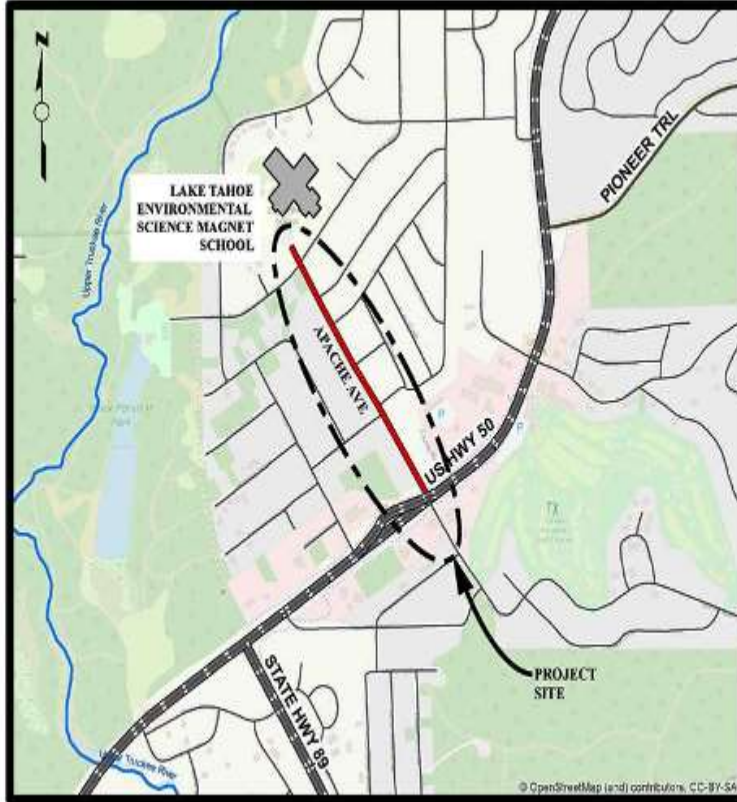
# Apache Avenue Pedestrian Safety and Connectivity Project

## CIP Project Summary

Project No: 36107021

Type: Pedestrian Way/Bike Path

Supervisor District(s) 5



### LOCATION MAP

NOT TO SCALE

### Project Description:

Apache Avenue is a major collector that serves motorists, cyclists, and pedestrians that access residences, parks, and schools. This project will reconstruct Apache Avenue from US 50 to the Lake Tahoe Environmental Science Magnet School, improve use of existing right of way by also adding class 2 bicycle lanes, a class 1 multi-use path on one side of the road and a sidewalk on the other side of the road.

Project Initiation Date: 3/6/2018



# Apache Avenue Pedestrian Safety and Connectivity Project

## Financing Plan & Tentative Schedule

Project No: 36107021

Type: Pedestrian Way/Bike Path

Supervisor District(s) 5

### All Figures in Thousands

Revenue Source	Prior FY*	FY 24/25	FY 25/26	FY 26/27	FY 27/28	FY 28/29	FY 29/30-33/34	FY 34/35-43/44	Total
Tahoe Regional Planning Agency/Mobility Mitigation	40		35						75
Congestion Mitigation and Air Quality Program (CMAQ)		499							499
RSTP Fed Funds – Caltrans LA	400	600							1,000
Carbon Reduction Program		525	20						545
Tahoe Regional Planning Agency/Water Quality	28	245							273
Active Transportation Program (ATP)		1,201	500						1,701
California Tahoe Conservancy (CTC)									
Road Fund		250							250
Transient Occupancy Tax (TOT)		250							250
Totals	468	3,570	555						4,593

### All Figures in Thousands

Expenditures	Prior FY*	FY 24/25	FY 25/26	FY 26/27	FY 27/28	FY 28/29	FY 29/30-33/34	FY 34/35-43/44	Total
Png/Env Consultant	23								23
Png/Env DOT Staff	136								136
Design Consultant									
Developer Advanced Design									
Design DOT Staff	309								309
ROW Acquisition									
ROW Utility Relocation									
ROW Consultant									
ROW DOT Staff									
Constr Eng Consultant		61							61
Const Eng Staff		562							562
Construction		2,927	535						3,462
Developer Built									
Environmental Mitig. Monitor Consult.									
Environmental Mitig. Monitor Staff		20	20						40
Plant Establishment - Consultant									
Plant Establishment - Staff									
Totals	468	3,570	555						4,593

Schedule	Prior FY*	FY 24/25	FY 25/26	FY 26/27	FY 27/28	FY 28/29	FY 29/30-33/34	FY 34/35-43/44
Planning/Environmental								
Design								
Construction								
Environmental Monitoring								

\*Prior FY includes actual revenue and expenditures through 6/30/2023, plus amounts estimated through 6/30/2024.



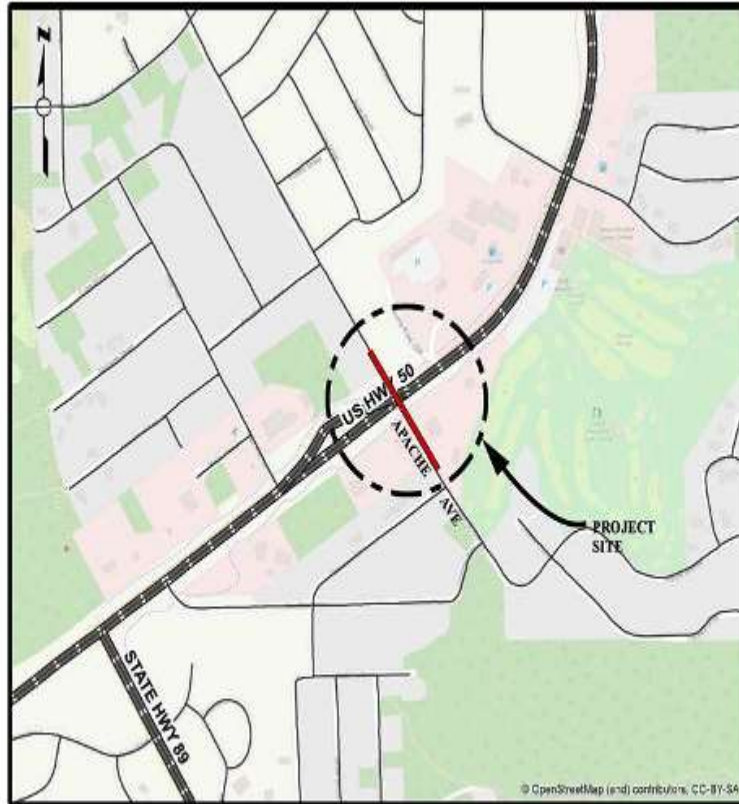
# Apache Avenue/US Highway 50 Intersection Improvement Project

## CIP Project Summary

Project No: 36104016

Type: Intersection

Supervisor District(s) 5



### LOCATION MAP

NOT TO SCALE

#### **Project Description:**

Planning, design and construction of improvements to the existing intersection of US 50 and Apache Avenue in the community region of Meyers in the Tahoe Basin. Improvements to include either a roundabout or an upgraded intersection and enhancements to pedestrian and bicycle facilities in the vicinity of the intersection.

Project Initiation Date: 3/28/2017



# Apache Avenue/US Highway 50 Intersection Improvement Project

## Financing Plan & Tentative Schedule

**Project No: 36104016**

**Type: Intersection**

**Supervisor District(s) 5**

### All Figures in Thousands

Revenue Source	Prior FY*	FY 24/25	FY 25/26	FY 26/27	FY 27/28	FY 28/29	FY 29/30-33/34	FY 34/35-43/44	Total
RSTP Exchange Funds-TRPA									
Tahoe Regional Planning Agency/Mobility Mitigation									
Congestion Mitigation and Air Quality Program (CMAQ)									
To Be Determined			87	1,350					1,437
Totals			87	1,350					1,437

### All Figures in Thousands

Expenditures	Prior FY*	FY 24/25	FY 25/26	FY 26/27	FY 27/28	FY 28/29	FY 29/30-33/34	FY 34/35-43/44	Total
Png/Env Consultant									
Png/Env DOT Staff									
Design Consultant									
Developer Advanced Design									
Design DOT Staff			87						87
ROW Acquisition									
ROW Utility Relocation									
ROW Consultant									
ROW DOT Staff									
Constr Eng Consultant				150					150
Const Eng Staff				200					200
Construction				1,000					1,000
Developer Built									
Environmental Mitig. Monitor Consult.									
Environmental Mitig. Monitor Staff									
Plant Establishment - Consultant									
Plant Establishment - Staff									
Totals			87	1,350					1,437

Schedule	Prior FY*	FY 24/25	FY 25/26	FY 26/27	FY 27/28	FY 28/29	FY 29/30-33/34	FY 34/35-43/44
Design								
Construction								

\*Prior FY includes actual revenue and expenditures through 6/30/2023, plus amounts estimated through 6/30/2024.



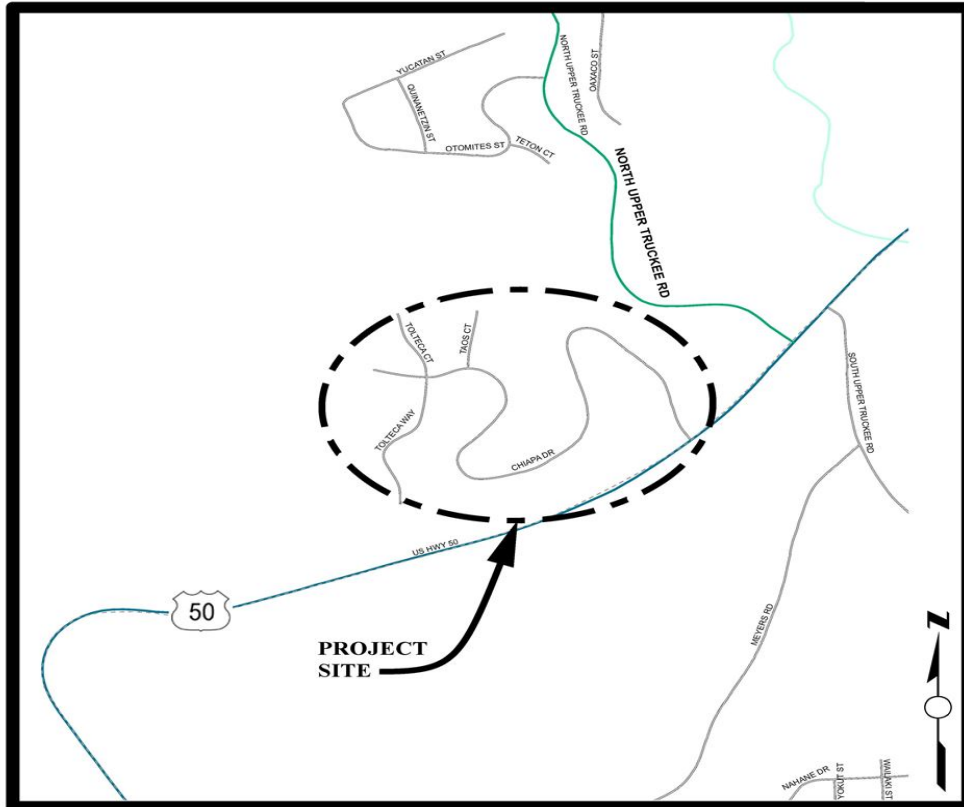
# Chiapa Erosion Control Project

## CIP Project Summary

Project No: 36107011

Type: Erosion Control - (EIP)

Supervisor District(s) 5



## LOCATION MAP

NOT TO SCALE

### Project Description:

The Chiapa Erosion Control Project encompasses the streets of Chiapa Drive, Tolteca Court and Taos Court. The main goal of the Project is to improve the clarity of Lake Tahoe by reducing the detrimental water quality impacts of Tahoe Paradise Unit No. 34 subdivision on Lake Tahoe clarity. The objective of the Project is the reduction in the transport of fine sediment from the Project area by constructing water quality Best Management Practices (BMPs) prior to reaching the Upper Truckee River to the maximum extent practicable.

Project Initiation Date: 6/23/2009



# Chiapa Erosion Control Project

## Financing Plan & Tentative Schedule

**Project No: 36107011**

**Type: Erosion Control - (EIP)**

**Supervisor District(s) 5**

**All Figures in Thousands**

Revenue Source	Prior FY*	FY 24/25	FY 25/26	FY 26/27	FY 27/28	FY 28/29	FY 29/30-33/34	FY 34/35-43/44	Total
California Tahoe Conservancy (CTC)									
Erosion Control Fund									
United States Forest Service (USFS)									
Tahoe Regional Planning Agency/Water Quality							45		45
To Be Determined							1,816		1,816
Totals							1,861		1,861

**All Figures in Thousands**

Expenditures	Prior FY*	FY 24/25	FY 25/26	FY 26/27	FY 27/28	FY 28/29	FY 29/30-33/34	FY 34/35-43/44	Total
Png/Env Consultant							110		110
Png/Env DOT Staff							81		81
Design Consultant							40		40
Developer Advanced Design									
Design DOT Staff							270		270
ROW Acquisition							10		10
ROW Utility Relocation									
ROW Consultant							6		6
ROW DOT Staff							20		20
Constr Eng Consultant									
Const Eng Staff							260		260
Construction							1,000		1,000
Developer Built									
Environmental Mitig. Monitor Consult.							20		20
Environmental Mitig. Monitor Staff							20		20
Plant Establishment - Consultant							12		12
Plant Establishment - Staff							12		12
Totals							1,861		1,861

Schedule	Prior FY*	FY 24/25	FY 25/26	FY 26/27	FY 27/28	FY 28/29	FY 29/30-33/34	FY 34/35-43/44
Planning/Environmental								
Design								
Right Of Way								
Construction								
Environmental Monitoring								

\*Prior FY includes actual revenue and expenditures through 6/30/2023, plus amounts estimated through 6/30/2024.





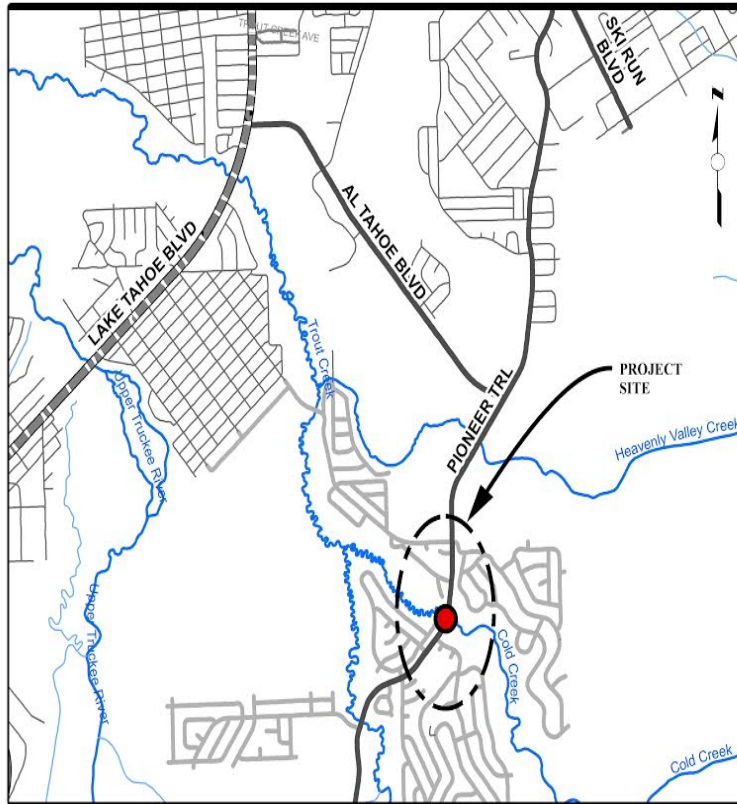
# Cold Creek Fisheries Project

## CIP Project Summary

Project No: 36107018

Type: Erosion Control - (EIP)

Supervisor District(s) 5



### LOCATION MAP

NOT TO SCALE

#### **Project Description:**

The original Project scope was to complete a comprehensive stream corridor restoration effort which included a 1 mile reach of Cold Creek, the STPUD access road, the culvert at Pioneer Trail, and the CSLT Globin Ponds. An existing Conditions Analysis Report was completed in May of 2006 which described the majority of the problems within this corridor and opportunities and constraints for the Project alternatives. Upon TAC review of the Report and further discussions with respect to the scope of work it was decided to reduce the scope of work for the County Project to just the culvert at Pioneer Trail. Therefore, the current Project includes addressing the culvert at Pioneer Trail with respect to fish passage only. The goals of this Project are to enhance/improve fisheries and riparian habitat along a portion of Cold Creek, reduce sediment load from adjacent road and reduce sediment load from adjacent slopes.

Project Initiation Date: TBD



# Cold Creek Fisheries Project

## Financing Plan & Tentative Schedule

**Project No: 36107018**

**Type: Erosion Control - (EIP)**

**Supervisor District(s) 5**

### All Figures in Thousands

Revenue Source	Prior FY*	FY 24/25	FY 25/26	FY 26/27	FY 27/28	FY 28/29	FY 29/30-33/34	FY 34/35-43/44	Total
California Tahoe Conservancy (CTC)	275								275
California Department of Fish & Wildlife (CDFW)									
Tahoe Regional Planning Agency/Stream Environmental Zone				50					50
Erosion Control Fund									
To Be Determined			626	1,324			22		1,972
<b>Totals</b>	<b>275</b>		<b>626</b>	<b>1,374</b>			<b>22</b>		<b>2,297</b>

### All Figures in Thousands

Expenditures	Prior FY*	FY 24/25	FY 25/26	FY 26/27	FY 27/28	FY 28/29	FY 29/30-33/34	FY 34/35-43/44	Total
Plng/Env Consultant			170						170
Plng/Env DOT Staff			85						85
Design Consultant	198		50						248
Developer Advanced Design									
Design DOT Staff	51		255						306
ROW Acquisition									
ROW Utility Relocation									
ROW Consultant			11						11
ROW DOT Staff			55						55
Constr Eng Consultant				28					28
Const Eng Staff				140					140
Construction				1,150					1,150
Developer Built									
Environmental Mitig. Monitor Consult.	18								18
Environmental Mitig. Monitor Staff	8			28			11		47
Plant Establishment - Consultant									
Plant Establishment - Staff				28			11		39
<b>Totals</b>	<b>275</b>		<b>626</b>	<b>1,374</b>			<b>22</b>		<b>2,297</b>

Schedule	Prior FY*	FY 24/25	FY 25/26	FY 26/27	FY 27/28	FY 28/29	FY 29/30-33/34	FY 34/35-43/44
Planning/Environmental								
Design								
Right Of Way								
Construction								
Environmental Monitoring								

\*Prior FY includes actual revenue and expenditures through 6/30/2023, plus amounts estimated through 6/30/2024.



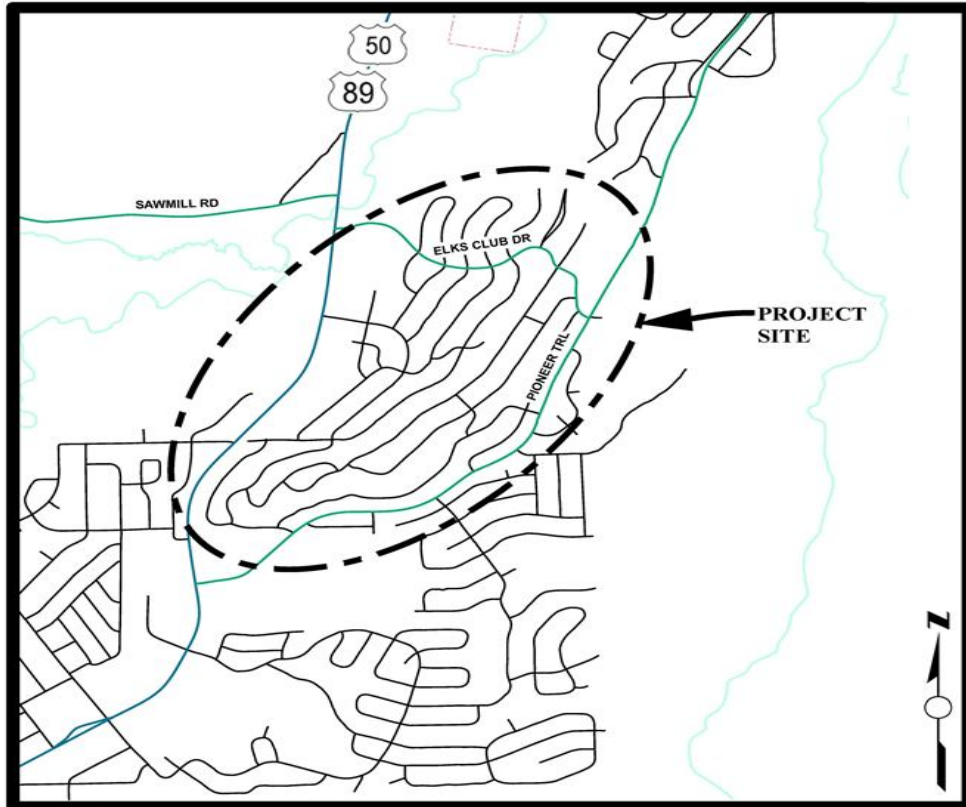
# Country Club Heights Erosion Control Project

## CIP Project Summary

Project No: 36107009

Type: Erosion Control - (EIP)

Supervisor District(s) 5



## LOCATION MAP

NOT TO SCALE

### Project Description:

The Country Club Heights Erosion Control Project is within the Country Club Heights subdivision (Units 1-5), more specifically between Crystal Air Drive at the upper southerly boundary to U.S. Highway 50 to the north and Thunderbird Drive at the upper westerly boundary to the Upper Truckee River to the west. The main goal of this Project is to reduce very fine/fine sediment from the County right-of-way from reaching the Upper Truckee River near Elks Club Road to the Total Maximum Daily Level (TMDL) set by Lahontan Regional Water Quality Control Board under the National Pollution Discharge Elimination System (NPDES) permit conditions.

Project Initiation Date: 7/1/2011



# Country Club Heights Erosion Control Project

## Financing Plan & Tentative Schedule

Project No: 36107009

Type: Erosion Control - (EIP)

Supervisor District(s) 5

### All Figures in Thousands

Revenue Source	Prior FY*	FY 24/25	FY 25/26	FY 26/27	FY 27/28	FY 28/29	FY 29/30-33/34	FY 34/35-43/44	Total
Erosion Control Fund									
Tahoe Regional Planning Agency/Water Quality	95	8							103
Tahoe Regional Planning Agency/Stream Environmental Zone	73								73
California Tahoe Conservancy (CTC)	849								849
United States Forest Service (USFS)	1,540								1,540
<b>Totals</b>	<b>2,558</b>	<b>8</b>							<b>2,566</b>

### All Figures in Thousands

Expenditures	Prior FY*	FY 24/25	FY 25/26	FY 26/27	FY 27/28	FY 28/29	FY 29/30-33/34	FY 34/35-43/44	Total
Plng/Env Consultant	225								225
Plng/Env DOT Staff	194								194
Design Consultant	5								5
Developer Advanced Design									
Design DOT Staff	329								329
ROW Acquisition									
ROW Utility Relocation									
ROW Consultant									
ROW DOT Staff									
Constr Eng Consultant	42								42
Const Eng Staff	265								265
Construction	1,383								1,383
Developer Built									
Environmental Mitig. Monitor Consult.									
Environmental Mitig. Monitor Staff	25	8							32
Plant Establishment - Consultant	21								21
Plant Establishment - Staff	69								69
<b>Totals</b>	<b>2,558</b>	<b>8</b>							<b>2,566</b>

Schedule	Prior FY*	FY 24/25	FY 25/26	FY 26/27	FY 27/28	FY 28/29	FY 29/30-33/34	FY 34/35-43/44
Planning/Environmental								
Design								
Right Of Way								
Construction								
Environmental Monitoring								

\*Prior FY includes actual revenue and expenditures through 6/30/2023, plus amounts estimated through 6/30/2024.



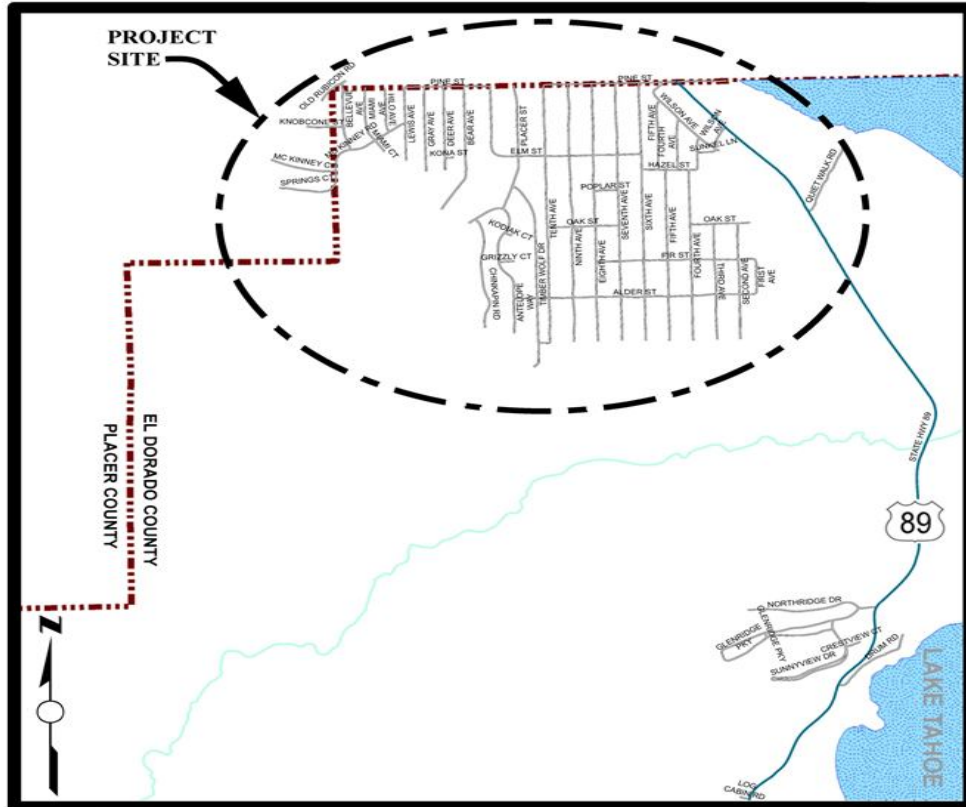
# County Service Area (CSA) #5 Erosion Control Project

## CIP Project Summary

Project No: 36107003

Type: Erosion Control - (EIP)

Supervisor District(s) 5



### LOCATION MAP

NOT TO SCALE

#### Project Description:

This project is located in the far northeasterly corner of El Dorado County in Tahoma. The goal of the project is to improve the clarity of Lake Tahoe by reducing the detrimental water quality impacts of the CSA 5 subdivision in Tahoma by replacing existing drainage infrastructure with modern components that allow sediment to drop out of the drainage systems before being conveyed into Lake Tahoe.

Project Initiation Date: 10/26/1998



\*Prior FY includes actual revenue and expenditures through 6/30/2023, plus amounts estimated through 6/30/2024.



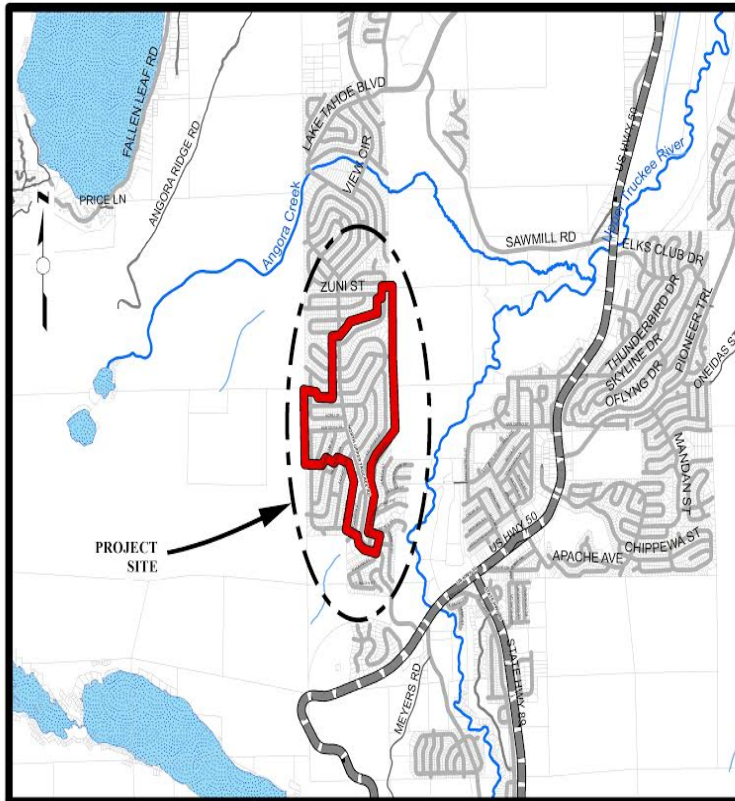
# Delaware Water Quality Project

## CIP Project Summary

Project No: 36107019

Type: Erosion Control - (EIP)

Supervisor District(s) 5



### LOCATION MAP

NOT TO SCALE

### Project Description:

This Project encompasses the Tahoe Paradise Units No. 20, 22, 23, and 24 subdivisions, which includes Delaware Street, Kiowa Drive, and Kickapoo Street. The primary goal of the Project is to improve the clarity of Lake Tahoe by reducing detrimental water quality impacts that are a result of the development of Tahoe Paradise Units No. 20, 22, 23, and 24. The objective of the Project is the reduction of the transport of fine sediment from the Project area to the Upper Truckee River by construction water quality Best Management Practices.

Project Initiation Date: 2/9/2017





# Delaware Water Quality Project

## Financing Plan & Tentative Schedule

**Project No: 36107019**

**Type: Erosion Control - (EIP)**

**Supervisor District(s) 5**

**All Figures in Thousands**

Revenue Source	Prior FY*	FY 24/25	FY 25/26	FY 26/27	FY 27/28	FY 28/29	FY 29/30-33/34	FY 34/35-43/44	Total
Tahoe Regional Planning Agency/Water Quality				5	4		21		29
To Be Determined				235	480		7		722
Erosion Control Fund									
Totals				240	483		28		751

**All Figures in Thousands**

Expenditures	Prior FY*	FY 24/25	FY 25/26	FY 26/27	FY 27/28	FY 28/29	FY 29/30-33/34	FY 34/35-43/44	Total
Png/Env Consultant				35					35
Png/Env DOT Staff				50					50
Design Consultant									
Developer Advanced Design									
Design DOT Staff				150					150
ROW Acquisition									
ROW Utility Relocation									
ROW Consultant									
ROW DOT Staff									
Constr Eng Consultant					3				3
Const Eng Staff				5	70		10		85
Construction					400				400
Developer Built									
Environmental Mitig. Monitor Consult.					2		2		4
Environmental Mitig. Monitor Staff					5		10		15
Plant Establishment - Consultant					1		1		2
Plant Establishment - Staff					3		5		8
Totals				240	483		28		751

Schedule	Prior FY*	FY 24/25	FY 25/26	FY 26/27	FY 27/28	FY 28/29	FY 29/30-33/34	FY 34/35-43/44
Planning/Environmental								
Design								
Construction								
Environmental Monitoring								

\*Prior FY includes actual revenue and expenditures through 6/30/2023, plus amounts estimated through 6/30/2024.



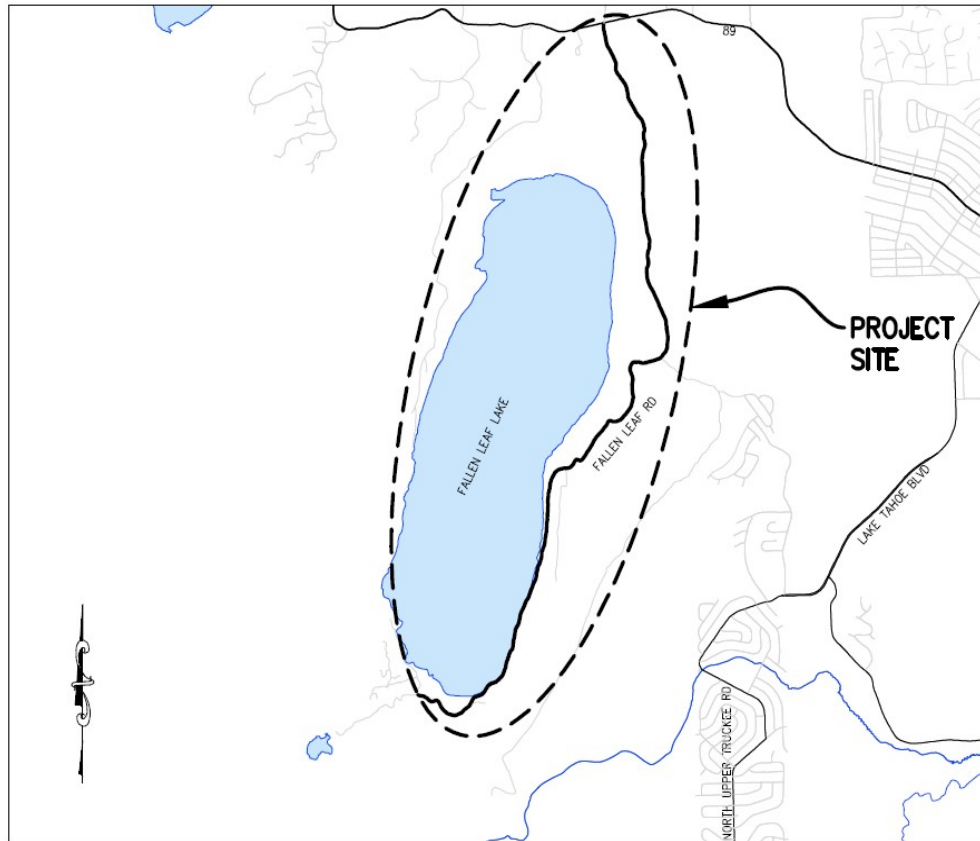
# Fallen Leaf Road Pavement Rehabilitation Project

## CIP Project Summary

Project No: 36105077

Type: Roadway

Supervisor District(s) 5



### LOCATION MAP

NOT TO SCALE

### Project Description:

Fallen Leaf Road is 4.9 miles long and extends from SR 89 to the southern end of Fallen Leaf Lake at Stanford Sierra Camp. The proposed project is to complete roadway improvements along the entire 4.9 mile length of Fallen Leaf Road from SR 89 to Glen Alpine Creek. The project may be broken into phases pending approval of future grant funds.

Project Initiation Date: 3/1/2022



# Fallen Leaf Road Pavement Rehabilitation Project

## Financing Plan & Tentative Schedule

**Project No: 36105077**

**Type: Roadway**

**Supervisor District(s) 5**

### All Figures in Thousands

Revenue Source	Prior FY*	FY 24/25	FY 25/26	FY 26/27	FY 27/28	FY 28/29	FY 29/30-33/34	FY 34/35-43/44	Total
Road Fund					375				375
To Be Determined				500	4,500				5,000
Transient Occupancy Tax (TOT)			400		1,250				1,650
Totals			400	500	6,125				7,025

### All Figures in Thousands

Expenditures	Prior FY*	FY 24/25	FY 25/26	FY 26/27	FY 27/28	FY 28/29	FY 29/30-33/34	FY 34/35-43/44	Total
Plng/Env Consultant			150						150
Plng/Env DOT Staff			250						250
Design Consultant									
Developer Advanced Design									
Design DOT Staff				400					400
ROW Acquisition									
ROW Utility Relocation									
ROW Consultant				100					100
ROW DOT Staff									
Constr Eng Consultant					20				20
Const Eng Staff					420				420
Construction					5,650				5,650
Developer Built									
Environmental Mitig. Monitor Consult.					5				5
Environmental Mitig. Monitor Staff					10				10
Plant Establishment - Consultant					10				10
Plant Establishment - Staff					10				10
Totals			400	500	6,125				7,025

Schedule	Prior FY*	FY 24/25	FY 25/26	FY 26/27	FY 27/28	FY 28/29	FY 29/30-33/34	FY 34/35-43/44
Planning/Environmental								
Design								
Right Of Way								
Construction								
Environmental Monitoring								

\*Prior FY includes actual revenue and expenditures through 6/30/2023, plus amounts estimated through 6/30/2024.



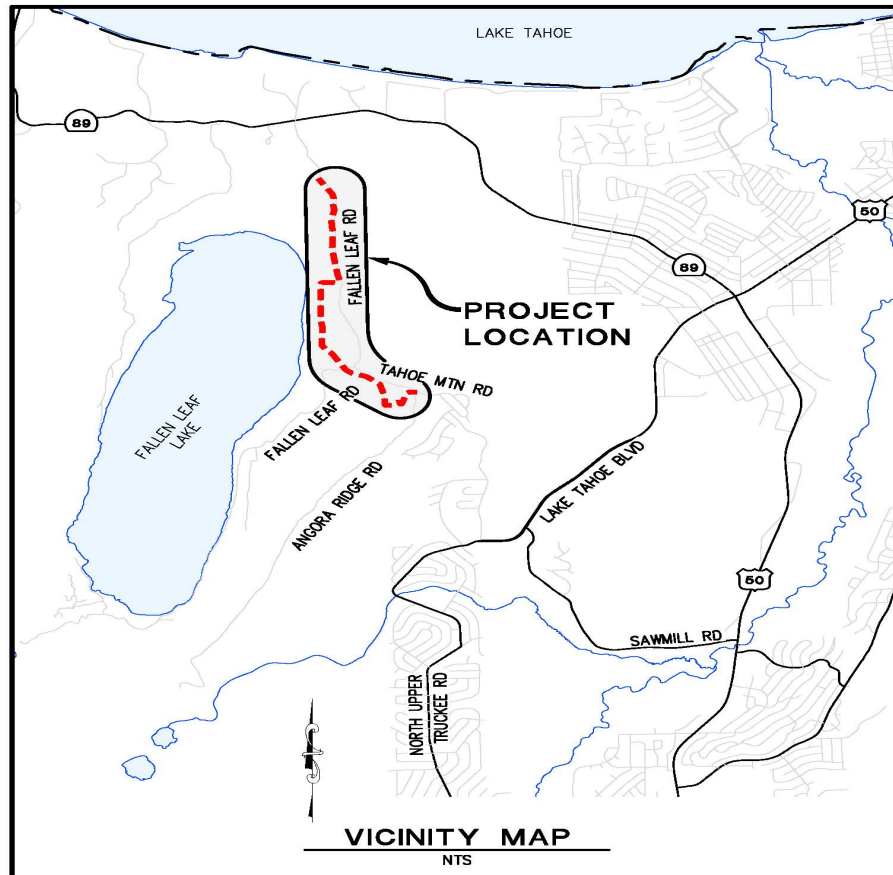
# Fallen Leaf Road Recreational Access Project

## CIP Project Summary

Project No: 36105050

Type: Roadway

Supervisor District(s) 5



### Project Description:

The Fallen Leaf Road Recreational Access Project will minimize pedestrian, bicyclists, and vehicle conflicts that occur on Fallen Leaf Road between the Fallen Leaf campground and Tahoe Mountain Road. The proposed project will include construction of approximately 2.2 miles of shared-use path with paved trailhead parking at either end of the path. The project would start at Fallen Leaf Campground and end near the intersection of Tahoe Mountain Road and Angora Ridge Road.

Project Initiation Date: 3/6/2018



# Fallen Leaf Road Recreational Access Project

## Financing Plan & Tentative Schedule

Project No: 36105050

Type: Roadway

Supervisor District(s) 5

### All Figures in Thousands

Revenue Source	Prior FY*	FY 24/25	FY 25/26	FY 26/27	FY 27/28	FY 28/29	FY 29/30-33/34	FY 34/35-43/44	Total
Tahoe Regional Planning Agency/Mobility Mitigation		10	17	20	20				67
Road Fund									
Federal Lands Access Program (FLAP)									
To Be Determined			173	220	1,298		1,190		2,881
RSTP Exchange Funds-TRPA	14								14
<b>Totals</b>	<b>14</b>	<b>10</b>	<b>190</b>	<b>240</b>	<b>1,318</b>		<b>1,190</b>		<b>2,962</b>

### All Figures in Thousands

Expenditures	Prior FY*	FY 24/25	FY 25/26	FY 26/27	FY 27/28	FY 28/29	FY 29/30-33/34	FY 34/35-43/44	Total
Png/Env Consultant			50						50
Png/Env DOT Staff	14	10	140						164
Design Consultant					55				55
Developer Advanced Design									
Design DOT Staff				200	55				255
ROW Acquisition									
ROW Utility Relocation									
ROW Consultant									
ROW DOT Staff				40					40
Constr Eng Consultant					23				23
Const Eng Staff					185		100		285
Construction					1,000		1,000		2,000
Developer Built									
Environmental Mitig. Monitor Consult.							22		22
Environmental Mitig. Monitor Staff							22		22
Plant Establishment - Consultant							23		23
Plant Establishment - Staff							23		23
<b>Totals</b>	<b>14</b>	<b>10</b>	<b>190</b>	<b>240</b>	<b>1,318</b>		<b>1,190</b>		<b>2,962</b>

Schedule	Prior FY*	FY 24/25	FY 25/26	FY 26/27	FY 27/28	FY 28/29	FY 29/30-33/34	FY 34/35-43/44
Planning/Environmental								
Design								
Right Of Way								
Construction								
Environmental Monitoring								

\*Prior FY includes actual revenue and expenditures through 6/30/2023, plus amounts estimated through 6/30/2024.



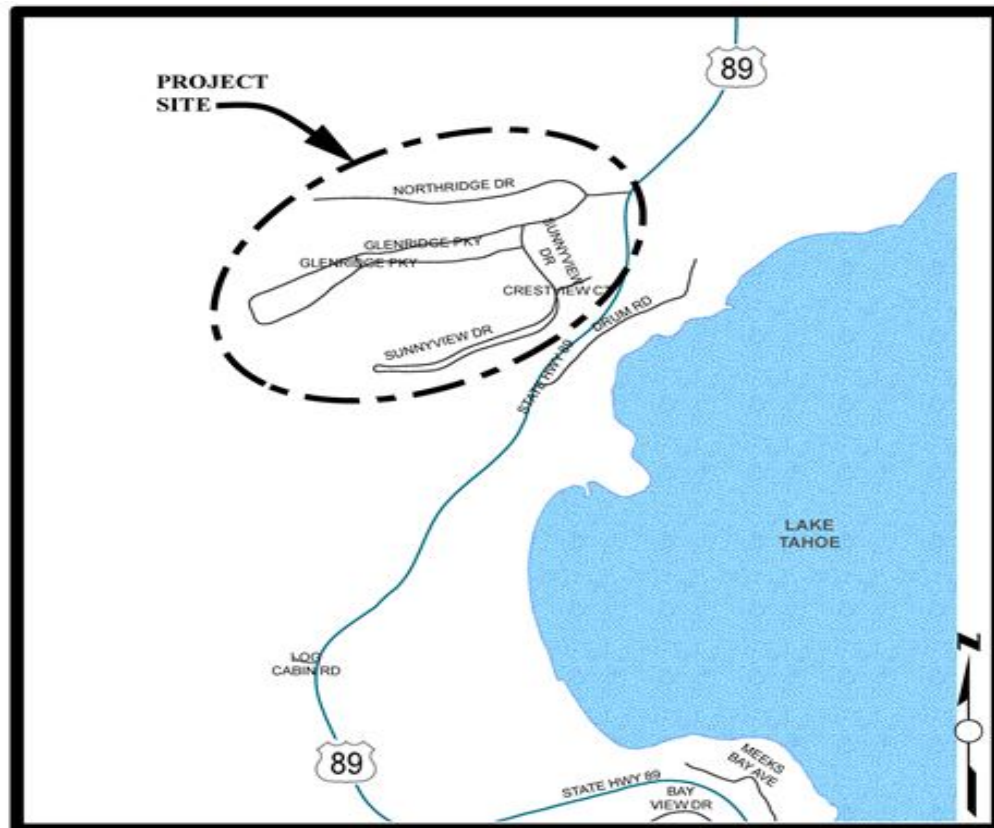
# Glenridge Erosion Control Project

## CIP Project Summary

Project No: 36107014

Type: Erosion Control - (EIP)

Supervisor District(s) 5



## LOCATION MAP

NOT TO SCALE

### Project Description:

The Glenridge Erosion Control Project is bounded by the Northridge Drive to the north, forested lands to the west, State Route 89 to the east and Sunnyview Drive to the south. The main goal of the Project is to improve the clarity of Lake Tahoe by reducing the detrimental water quality impacts of the Glenridge Park Unit No. 1 subdivision on Lake Tahoe clarity. The objective of the Project is the reduction in the transport of fine sediment from the Project area by constructing water quality Best Management Practices (BMPs) prior to reaching Lake Tahoe to the maximum extent practicable.

Project Initiation Date: 6/23/2009



# Glenridge Erosion Control Project

## Financing Plan & Tentative Schedule

Project No: 36107014

Type: Erosion Control - (EIP)

Supervisor District(s) 5

### All Figures in Thousands

Revenue Source	Prior FY*	FY 24/25	FY 25/26	FY 26/27	FY 27/28	FY 28/29	FY 29/30-33/34	FY 34/35-43/44	Total
California Tahoe Conservancy (CTC)									
Tahoe Regional Planning Agency/Water Quality							51		51
United States Forest Service (USFS)									
Erosion Control Fund									
To Be Determined				170			1,512		1,682
Totals				170			1,563		1,733

### All Figures in Thousands

Expenditures	Prior FY*	FY 24/25	FY 25/26	FY 26/27	FY 27/28	FY 28/29	FY 29/30-33/34	FY 34/35-43/44	Total
Png/Env Consultant				75					75
Png/Env DOT Staff				45					45
Design Consultant									
Developer Advanced Design									
Design DOT Staff				50			150		200
ROW Acquisition							6		6
ROW Utility Relocation									
ROW Consultant							4		4
ROW DOT Staff							13		13
Constr Eng Consultant							40		40
Const Eng Staff							200		200
Construction							1,000		1,000
Developer Built									
Environmental Mitig. Monitor Consult.							10		10
Environmental Mitig. Monitor Staff							10		10
Plant Establishment - Consultant							13		13
Plant Establishment - Staff							118		118
Totals				170			1,563		1,733

Schedule	Prior FY*	FY 24/25	FY 25/26	FY 26/27	FY 27/28	FY 28/29	FY 29/30-33/34	FY 34/35-43/44
Planning/Environmental								
Design								
Right Of Way								
Construction								
Environmental Monitoring								

\*Prior FY includes actual revenue and expenditures through 6/30/2023, plus amounts estimated through 6/30/2024.



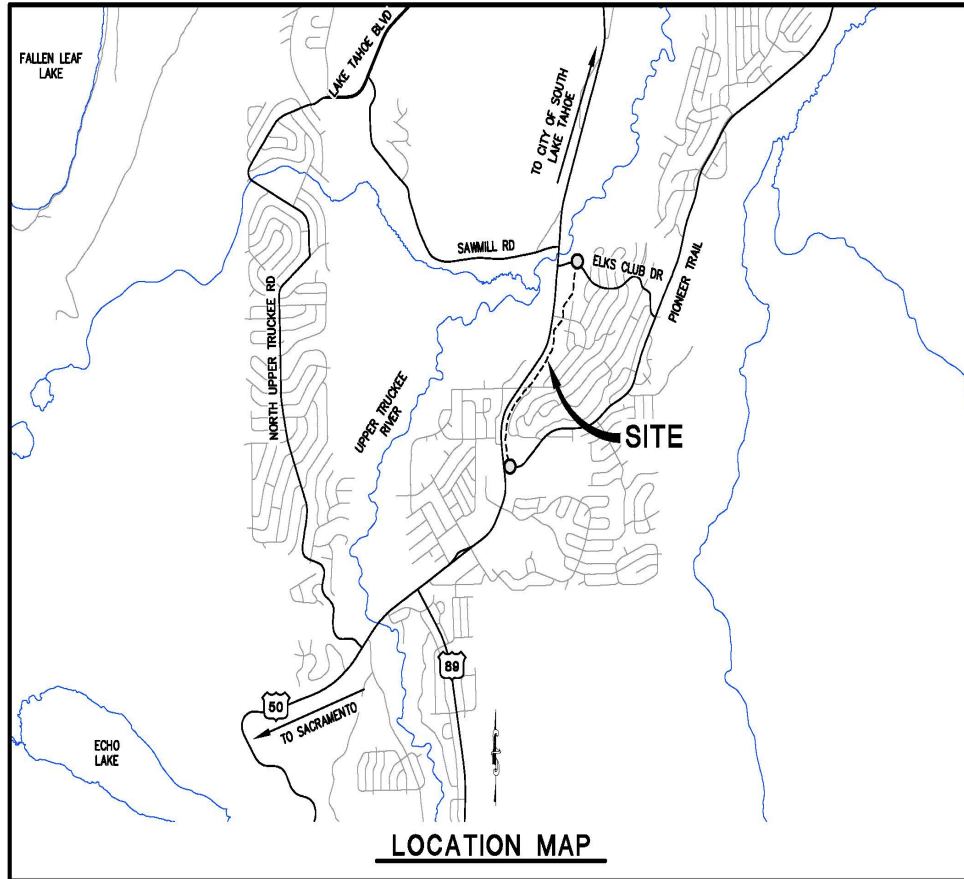
# Greenway Shared Use Path - Meyers to Elks Club Drive

## CIP Project Summary

Project No: 36107024

Type: Parks & Trails

Supervisor District(s) 5



### Project Description:

The Meyers Bikeway Connector Project (Project) will implement shared use accessibility improvements to the community of Meyers between the intersection of US 50 with Pioneer Trail and Elks Club Drive. The proposed shared use path extension will connect residents in the County Club Heights neighborhood with the Community of Meyers.

Project Initiation Date: TBD





# Greenway Shared Use Path - Meyers to Elks Club Drive

## Financing Plan & Tentative Schedule

Project No: 36107024

Type: Parks & Trails

Supervisor District(s) 5

### All Figures in Thousands

Revenue Source	Prior FY*	FY 24/25	FY 25/26	FY 26/27	FY 27/28	FY 28/29	FY 29/30-33/34	FY 34/35-43/44	Total
Erosion Control Fund									
To Be Determined			200	550	3,016				3,766
Totals			200	550	3,016				3,766

### All Figures in Thousands

Expenditures	Prior FY*	FY 24/25	FY 25/26	FY 26/27	FY 27/28	FY 28/29	FY 29/30-33/34	FY 34/35-43/44	Total
Plng/Env Consultant									
Plng/Env DOT Staff			200	250					450
Design Consultant									
Developer Advanced Design									
Design DOT Staff				300	200				500
ROW Acquisition									
ROW Utility Relocation									
ROW Consultant									
ROW DOT Staff									
Constr Eng Consultant					265				265
Const Eng Staff									
Construction					2,551				2,551
Developer Built									
Environmental Mitig. Monitor Consult.									
Environmental Mitig. Monitor Staff									
Plant Establishment - Consultant									
Plant Establishment - Staff									
Totals			200	550	3,016				3,766

Schedule	Prior FY*	FY 24/25	FY 25/26	FY 26/27	FY 27/28	FY 28/29	FY 29/30-33/34	FY 34/35-43/44
Planning/Environmental								
Design								
Construction								

\*Prior FY includes actual revenue and expenditures through 6/30/2023, plus amounts estimated through 6/30/2024.



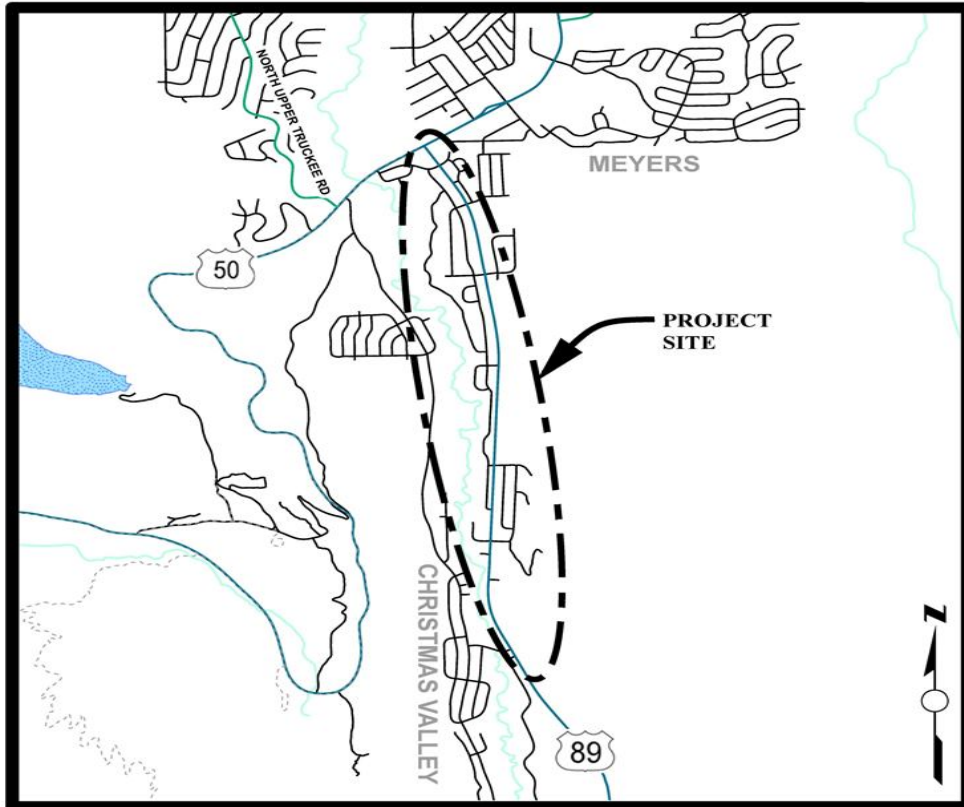
# Highway 89 Class I Bike Path Project

## CIP Project Summary

Project No: 36107010

Type: Pedestrian Way/Bike Path

Supervisor District(s) 5



## LOCATION MAP

NOT TO SCALE

### Project Description:

The Class I bikeway along State Route 89 from Portal Road to US Highway 50 in Christmas Valley is intended to improve the regional bicycle path network by providing a critical link through the Christmas Valley area. The purpose of the project is to provide access to local businesses, schools, and offices for bicyclists and pedestrians, to reduce vehicular transportation, and to enhance recreational opportunities within the Lake Tahoe Basin. This bicycle facility will connect to the existing Pat Lowe Memorial Bike Path in community of Meyers.

Project Initiation Date: 2/13/2007



# Highway 89 Class I Bike Path Project

## Financing Plan & Tentative Schedule

Project No: 36107010

Type: Pedestrian Way/Bike Path

Supervisor District(s) 5

### All Figures in Thousands

Revenue Source	Prior FY*	FY 24/25	FY 25/26	FY 26/27	FY 27/28	FY 28/29	FY 29/30-33/34	FY 34/35-43/44	Total
To Be Determined							1,670		1,670
Tahoe Regional Planning Agency/Mobility Mitigation							441		441
Erosion Control Fund									
Totals							2,110		2,110

### All Figures in Thousands

Expenditures	Prior FY*	FY 24/25	FY 25/26	FY 26/27	FY 27/28	FY 28/29	FY 29/30-33/34	FY 34/35-43/44	Total
Png/Env Consultant							25		25
Png/Env DOT Staff							77		77
Design Consultant									
Developer Advanced Design									
Design DOT Staff							175		175
ROW Acquisition									
ROW Utility Relocation									
ROW Consultant									
ROW DOT Staff									
Constr Eng Consultant							7		7
Const Eng Staff							372		372
Construction							1,420		1,420
Developer Built									
Environmental Mitig. Monitor Consult.									
Environmental Mitig. Monitor Staff							10		10
Plant Establishment - Consultant							1		1
Plant Establishment - Staff							24		24
Totals							2,110		2,110

Schedule	Prior FY*	FY 24/25	FY 25/26	FY 26/27	FY 27/28	FY 28/29	FY 29/30-33/34	FY 34/35-43/44
Planning/Environmental								
Design								
Construction								
Environmental Monitoring								

\*Prior FY includes actual revenue and expenditures through 6/30/2023, plus amounts estimated through 6/30/2024.



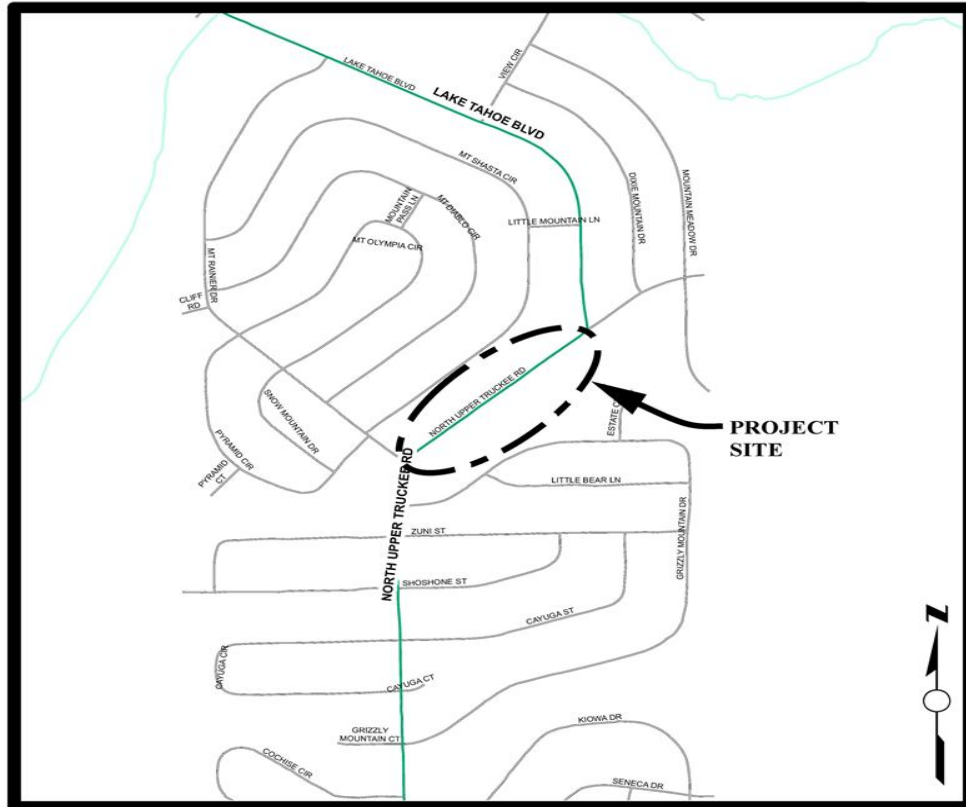
# North Upper Truckee SEZ Restoration Project

## CIP Project Summary

Project No: 36107012

Type: Erosion Control - (EIP)

Supervisor District(s) 5



## LOCATION MAP

NOT TO SCALE

### Project Description:

The goal of the project is to restore Lake Tahoe's clarity and protect a sensitive stream environment zone (SEZ) through effective and safe conveyance of urban runoff from the project area and the downstream to treatment facilities. The current condition allows for excessive sediment and nutrient transport to the SEZ through uncontrolled urban runoff conveyance, directly discharging to a perennial stream historically known as "Slump Alley". Slump Alley is a sensitive riparian area with annual flows that house a unique brook trout population and stream environment zone that flows to protected State Park known as the Washoe Meadows State Park. The current configuration requires the use of roadside ditching and excessive road maintenance disturbance, due to surface elevation of the road being equal to or lower than the surrounding SEZ. This Project intends to responsibly convey water from the existing road along North Upper Truckee Road and down Lake Tahoe Boulevard to Mountain Meadow Drive, which will provide water quality, SEZ restoration, fisheries, general transportation and social benefits to Lake Tahoe and the surrounding community. The proposed project will evaluate the best methods to alleviate the current road impacts to the SEZ through a responsible and collaborative approach, with the best interest of Slump Alley stream in mind.

Project Initiation Date: 2/13/2007



# North Upper Truckee SEZ Restoration Project

## Financing Plan & Tentative Schedule

**Project No: 36107012**

**Type: Erosion Control - (EIP)**

**Supervisor District(s) 5**

### All Figures in Thousands

Revenue Source	Prior FY*	FY 24/25	FY 25/26	FY 26/27	FY 27/28	FY 28/29	FY 29/30-33/34	FY 34/35-43/44	Total
United States Forest Service (USFS)		264	136						400
Tahoe Regional Planning Agency/Stream Environmental Zone			39						39
To Be Determined			175	2,525					2,700
Totals		264	350	2,525					3,139

### All Figures in Thousands

Expenditures	Prior FY*	FY 24/25	FY 25/26	FY 26/27	FY 27/28	FY 28/29	FY 29/30-33/34	FY 34/35-43/44	Total
PIng/Env Consultant		84							84
PIng/Env DOT Staff		180							180
Design Consultant									
Developer Advanced Design									
Design DOT Staff			350						350
ROW Acquisition									
ROW Utility Relocation									
ROW Consultant									
ROW DOT Staff									
Constr Eng Consultant				25					25
Const Eng Staff				300					300
Construction				2,200					2,200
Developer Built									
Environmental Mitig. Monitor Consult.									
Environmental Mitig. Monitor Staff									
Plant Establishment - Consultant									
Plant Establishment - Staff									
Totals		264	350	2,525					3,139

Schedule	Prior FY*	FY 24/25	FY 25/26	FY 26/27	FY 27/28	FY 28/29	FY 29/30-33/34	FY 34/35-43/44
Planning/Environmental								
Design								
Construction								

\*Prior FY includes actual revenue and expenditures through 6/30/2023, plus amounts estimated through 6/30/2024.



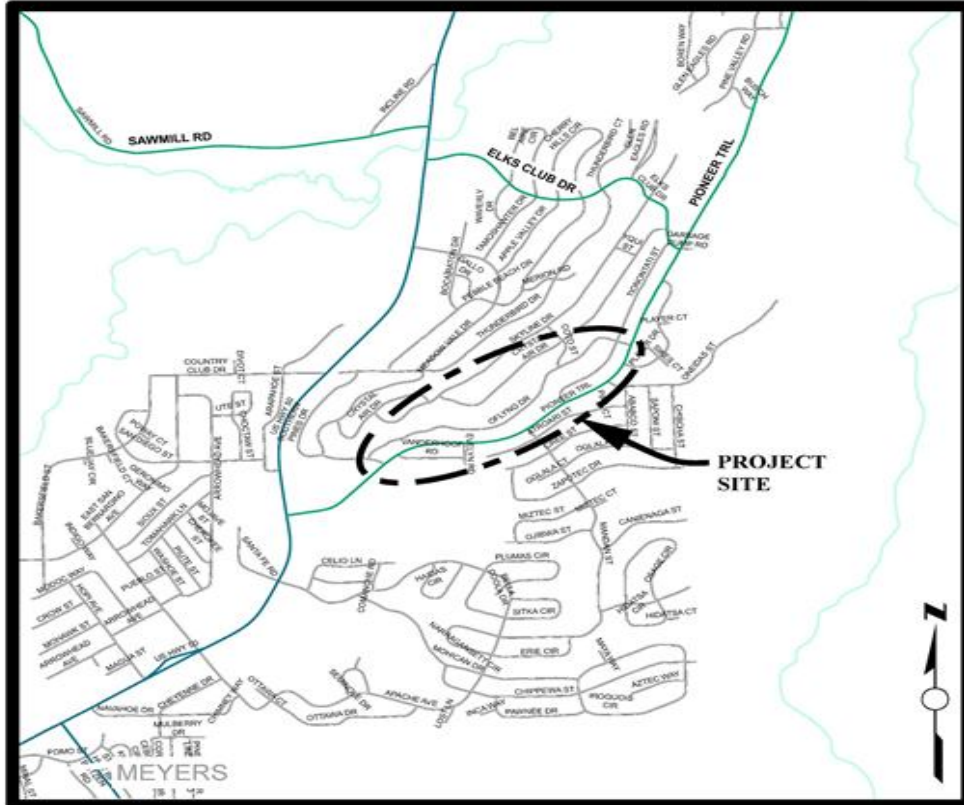
# Ofl yng Water Quality Project

## CIP Project Summary

Project No: 36107016

Type: Erosion Control - (EIP)

Supervisor District(s) 5



## LOCATION MAP

NOT TO SCALE

### Project Description:

The Ofl yng Water Quality Project is within the Country Club Heights subdivision (Unit 5) and Tahoe Paradise Subdivision (Unit 48), more specifically between Crystal Air Drive at the upper northerly boundary to Pioneer Trail to the south and Southern Pines Drive at the westerly boundary to Elks Club Drive to the east. The project benefits will include increased water quality of urban stormwater and dry weather runoff through infiltration, addressing flood management issues with Low Impact Design principles, and community outreach on stormwater as a resource.

Project Initiation Date: 3/18/2014



# Oflyng Water Quality Project

## Financing Plan & Tentative Schedule

**Project No: 36107016**

**Type: Erosion Control - (EIP)**

**Supervisor District(s) 5**

**All Figures in Thousands**

Revenue Source	Prior FY*	FY 24/25	FY 25/26	FY 26/27	FY 27/28	FY 28/29	FY 29/30-33/34	FY 34/35-43/44	Total
California Tahoe Conservancy (CTC)	3								3
Tahoe Regional Planning Agency/Water Quality	232	10							242
United States Forest Service (USFS)	1,351	218							1,569
State Water Resources Control Board	85								85
Erosion Control Fund									
<b>Totals</b>	<b>1,671</b>	<b>228</b>							<b>1,899</b>

**All Figures in Thousands**

Expenditures	Prior FY*	FY 24/25	FY 25/26	FY 26/27	FY 27/28	FY 28/29	FY 29/30-33/34	FY 34/35-43/44	Total
Plng/Env Consultant	65								65
Plng/Env DOT Staff	41								41
Design Consultant	10								10
Developer Advanced Design									
Design DOT Staff	195								195
ROW Acquisition									
ROW Utility Relocation									
ROW Consultant									
ROW DOT Staff									
Constr Eng Consultant									
Const Eng Staff	119	18							136
Construction	1,217	200							1,417
Developer Built									
Environmental Mitig. Monitor Consult.									
Environmental Mitig. Monitor Staff	5	10							15
Plant Establishment - Consultant	10								10
Plant Establishment - Staff	10								10
<b>Totals</b>	<b>1,671</b>	<b>228</b>							<b>1,899</b>

Schedule	Prior FY*	FY 24/25	FY 25/26	FY 26/27	FY 27/28	FY 28/29	FY 29/30-33/34	FY 34/35-43/44
Planning/Environmental								
Design								
Construction								
Environmental Monitoring								

\*Prior FY includes actual revenue and expenditures through 6/30/2023, plus amounts estimated through 6/30/2024.



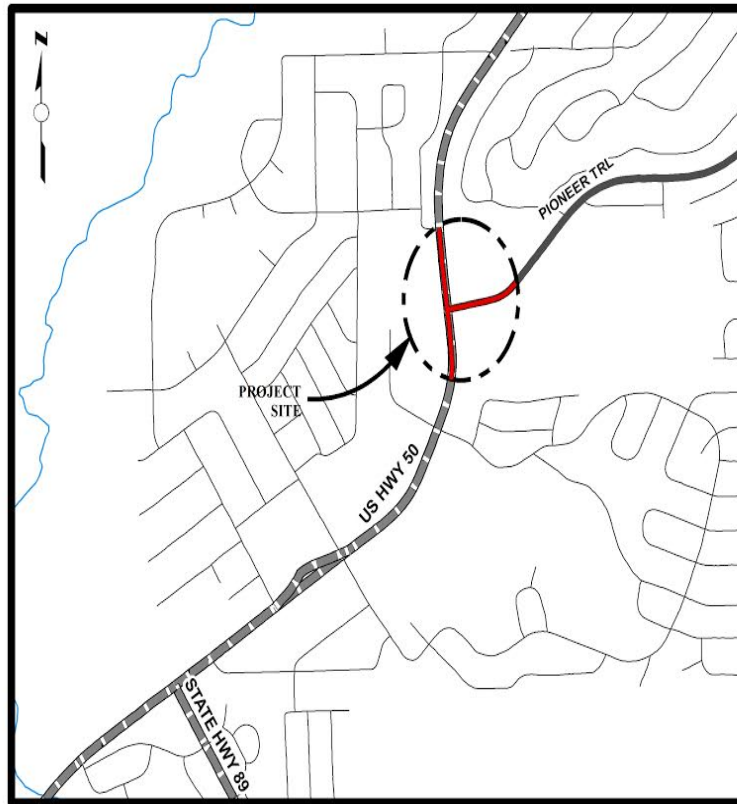
# Pioneer Trail/US Highway 50 Intersection Safety Improvement Project

## CIP Project Summary

Project No: 36104026

Type: Intersection

Supervisor District(s) 5



### LOCATION MAP

NOT TO SCALE

### **Project Description:**

This project will improve the intersection of US 50 and Pioneer Trail in Meyers by replacing the existing signalized intersection with a roundabout. Multiple agencies including El Dorado County, Caltrans Headquarters, Caltrans Maintenance, Caltrans Traffic Operations, CHP, TRPA, FHWA, participated in analyzing the U.S. 50 Meyers Corridor and this intersection for potential safety improvements in 2016. Nearly all of the project is in Caltrans right of way, and when Caltrans procedures are used to determine intersection improvements that will provide the greatest operational and safety benefits, it is likely that a roundabout will be constructed to replace the existing signalized intersection.

Project Initiation Date: 3/28/2017





# Pioneer Trail/US Highway 50 Intersection Safety Improvement Project

## Financing Plan & Tentative Schedule

**Project No: 36104026**

**Type: Intersection**

**Supervisor District(s) 5**

### All Figures in Thousands

Revenue Source	Prior FY*	FY 24/25	FY 25/26	FY 26/27	FY 27/28	FY 28/29	FY 29/30-33/34	FY 34/35-43/44	Total
Highway Safety Improvement Program (HSIP) - Federal		869	2,581						3,450
Tahoe Regional Planning Agency/Mobility Mitigation	140		10	18					168
Road Fund	1								1
Congestion Mitigation and Air Quality Program (CMAQ)	261	669	1,596						2,526
RSTP Fed Funds – Caltrans LA	788	488	1,204						2,480
State-Local Partnership Program (SLPP)		770	2,285						3,055
To Be Determined									
RSTP Exchange Funds-TRPA	15								15
<b>Totals</b>	<b>1,205</b>	<b>2,797</b>	<b>7,676</b>	<b>18</b>					<b>11,696</b>

### All Figures in Thousands

Expenditures	Prior FY*	FY 24/25	FY 25/26	FY 26/27	FY 27/28	FY 28/29	FY 29/30-33/34	FY 34/35-43/44	Total
Plng/Env Consultant	566								566
Plng/Env DOT Staff	157								157
Design Consultant	3								3
Developer Advanced Design									
Design DOT Staff	447								447
ROW Acquisition	7								7
ROW Utility Relocation									
ROW Consultant	8								8
ROW DOT Staff	17								17
Constr Eng Consultant		515	1,045						1,560
Const Eng Staff		172	348						520
Construction		2,110	6,263						8,373
Developer Built									
Environmental Mitig. Monitor Consult.			1	1					2
Environmental Mitig. Monitor Staff			6	6					12
Plant Establishment - Consultant			6	6					12
Plant Establishment - Staff			6	6					12
<b>Totals</b>	<b>1,205</b>	<b>2,797</b>	<b>7,676</b>	<b>18</b>					<b>11,696</b>

Schedule	Prior FY*	FY 24/25	FY 25/26	FY 26/27	FY 27/28	FY 28/29	FY 29/30-33/34	FY 34/35-43/44
Planning/Environmental								
Design								
Right Of Way								
Construction								
Environmental Monitoring								

\*Prior FY includes actual revenue and expenditures through 6/30/2023, plus amounts estimated through 6/30/2024.



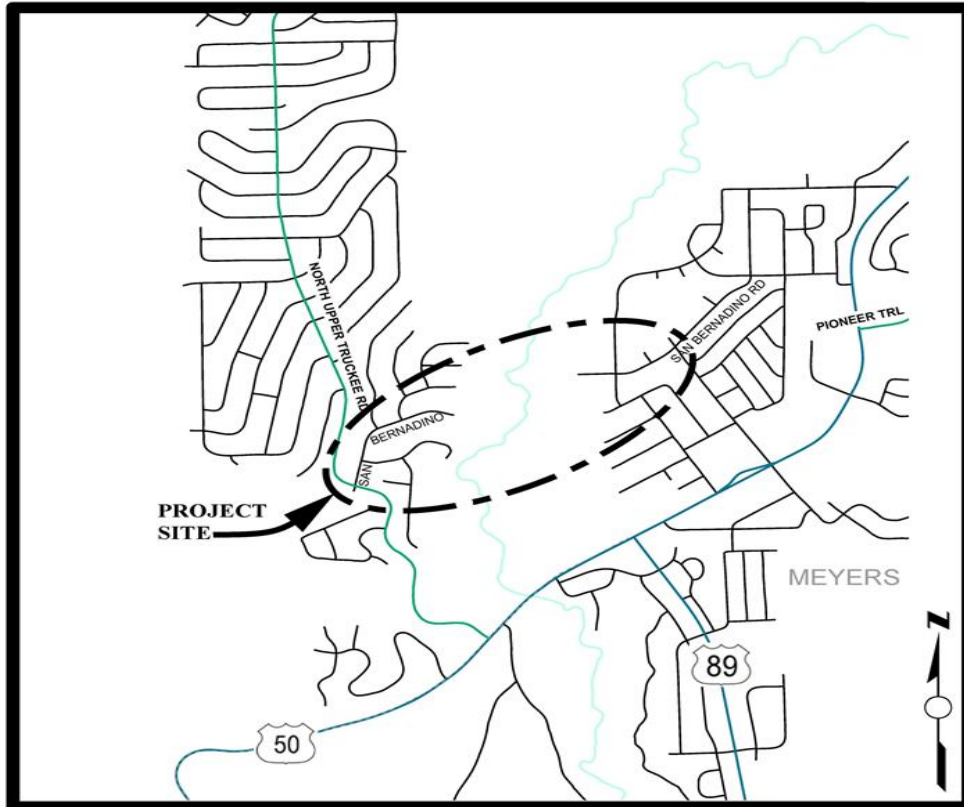
# San Bernardino Class I Bike Trail Project

## CIP Project Summary

Project No: 36107017

Type: Pedestrian Way/Bike Path

Supervisor District(s) 5



### LOCATION MAP

NOT TO SCALE

#### **Project Description:**

Construct approximately 0.37 miles of Class 1 bike path from East San Bernardino Avenue, just west of the Upper Truckee River, to Tahoe Paradise Park in the community of Meyers in the Tahoe Basin.

Project Initiation Date: 3/18/2014



Schedule	Prior FY*	FY 24/25	FY 25/26	FY 26/27	FY 27/28	FY 28/29	FY 29/30-33/34	FY 34/35-43/44
Planning/Environmental								
Design								
Right Of Way								
Construction								
Environmental Monitoring								

\*Prior FY includes actual revenue and expenditures through 6/30/2023, plus amounts estimated through 6/30/2024.



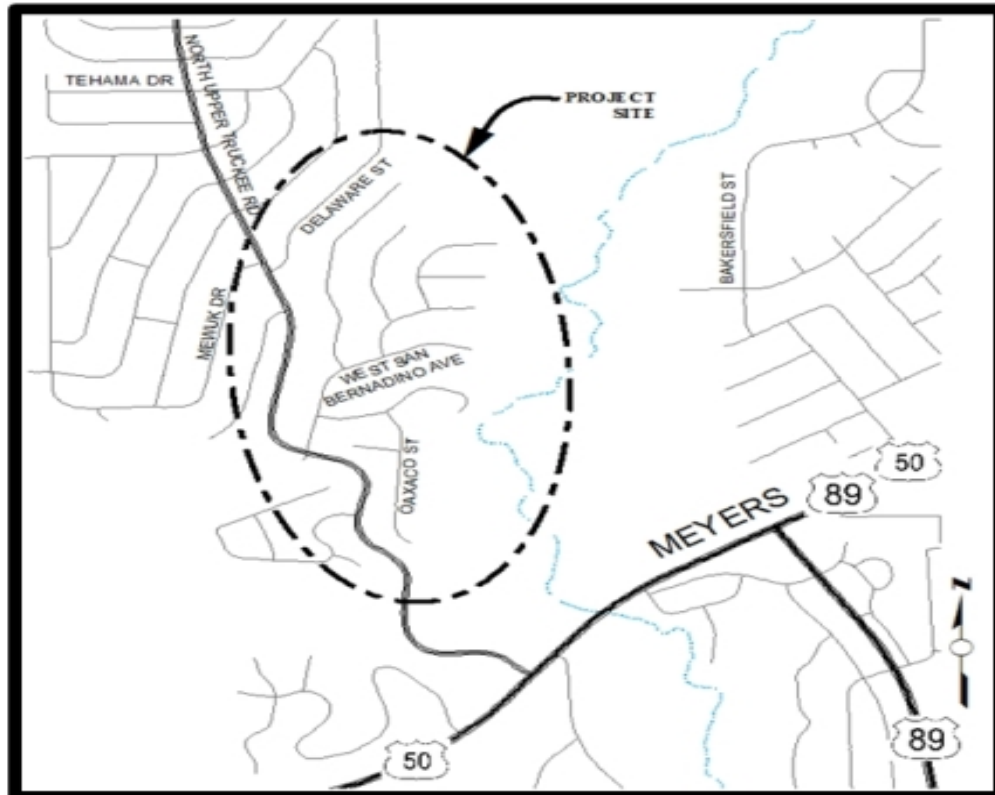
# San Bernardino Water Quality Project

## CIP Project Summary

Project No: 36107020

Type: Erosion Control - (EIP)

Supervisor District(s) 5



## LOCATION MAP

NOT TO SCALE

### Project Description:

(Formerly San Bernardino Erosion Control Project) This project will treat eroding cut and fill slopes in County right-of-way. Retain and treat the 25YR-1HR storm. The project also includes revegetation of disturbed areas. It will comply with future Total Maximum Daily Load (TMDL) requirements. Right-of-way acquisitions will be performed if needed.

Project Initiation Date: 3/28/2017



# San Bernardino Water Quality Project

## Financing Plan & Tentative Schedule

**Project No: 36107020**

**Type: Erosion Control - (EIP)**

**Supervisor District(s) 5**

### All Figures in Thousands

Revenue Source	Prior FY*	FY 24/25	FY 25/26	FY 26/27	FY 27/28	FY 28/29	FY 29/30-33/34	FY 34/35-43/44	Total
Tahoe Regional Planning Agency/Water Quality				9			21		29
To Be Determined				135	580		7		722
Erosion Control Fund									
Totals				144	580		28		751

### All Figures in Thousands

Expenditures	Prior FY*	FY 24/25	FY 25/26	FY 26/27	FY 27/28	FY 28/29	FY 29/30-33/34	FY 34/35-43/44	Total
Png/Env Consultant				35					35
Png/Env DOT Staff				50					50
Design Consultant									
Developer Advanced Design									
Design DOT Staff				50	100				150
ROW Acquisition									
ROW Utility Relocation									
ROW Consultant									
ROW DOT Staff									
Constr Eng Consultant					3				3
Const Eng Staff				5	70		10		85
Construction					400				400
Developer Built									
Environmental Mitig. Monitor Consult.				1	1		2		4
Environmental Mitig. Monitor Staff				3	3		10		15
Plant Establishment - Consultant					1		1		2
Plant Establishment - Staff					3		5		8
Totals				144	580		28		751

Schedule	Prior FY*	FY 24/25	FY 25/26	FY 26/27	FY 27/28	FY 28/29	FY 29/30-33/34	FY 34/35-43/44
Planning/Environmental								
Design								
Construction								
Environmental Monitoring								

\*Prior FY includes actual revenue and expenditures through 6/30/2023, plus amounts estimated through 6/30/2024.



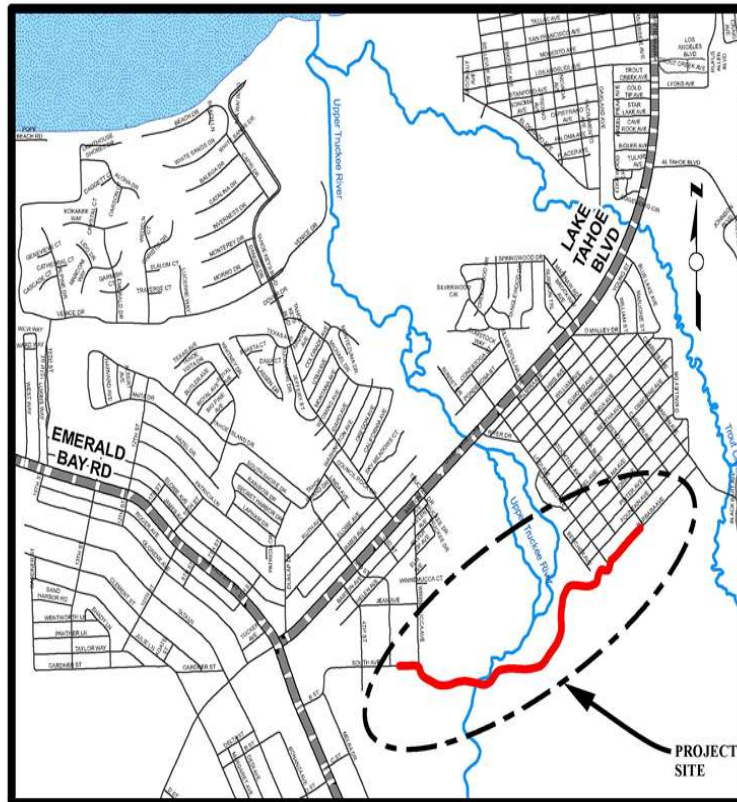
# South Tahoe Greenway - Upper Truckee River Bridge at Johnson Meadow

## CIP Project Summary

Project No: 36107023

Type: Pedestrian Way/Bike Path

Supervisor District(s) 5



### LOCATION MAP

NOT TO SCALE

#### **Project Description:**

The South Tahoe Greenway - Upper Truckee Bridge at Johnson Meadow Project will build upon the Dennis T. Machida Memorial Greenway shared use path network through the south shore of Lake Tahoe. The Project aims to construct approximately 1.2 miles of a Class 1 shared use path and replacing a heavily trafficked bridge over the Upper Truckee River damaged by the 2017 winter storms. The Project will provide active transportation users a critical link to Barton Hospital from the west and the Tahoe Sierra neighborhood and the Lake Tahoe Community College to the east.

Project Initiation Date: 2/11/2020





# South Tahoe Greenway - Upper Truckee River Bridge at Johnson Meadow

## Financing Plan & Tentative Schedule

**Project No: 36107023**

**Type: Pedestrian Way/Bike Path**

**Supervisor District(s) 5**

### All Figures in Thousands

Revenue Source	Prior FY*	FY 24/25	FY 25/26	FY 26/27	FY 27/28	FY 28/29	FY 29/30-33/34	FY 34/35-43/44	Total
RSTP Fed Funds – Caltrans LA	581	188							769
Tahoe Regional Planning Agency/Mobility Mitigation	41	59							100
To Be Determined		1,948	7,355	58					9,361
Totals	622	2,195	7,355	58					10,229

### All Figures in Thousands

Expenditures	Prior FY*	FY 24/25	FY 25/26	FY 26/27	FY 27/28	FY 28/29	FY 29/30-33/34	FY 34/35-43/44	Total
Plng/Env Consultant	244								244
Plng/Env DOT Staff	329								329
Design Consultant	50	103							153
Developer Advanced Design									
Design DOT Staff		53							53
ROW Acquisition		20							20
ROW Utility Relocation									
ROW Consultant									
ROW DOT Staff		39							39
Constr Eng Consultant		50	40						90
Const Eng Staff		180	945						1,125
Construction		1,750	6,350						8,100
Developer Built									
Environmental Mitig. Monitor Consult.									
Environmental Mitig. Monitor Staff			10	50					60
Plant Establishment - Consultant			5	3					8
Plant Establishment - Staff			5	5					10
Totals	622	2,195	7,355	58					10,229

Schedule	Prior FY*	FY 24/25	FY 25/26	FY 26/27	FY 27/28	FY 28/29	FY 29/30-33/34	FY 34/35-43/44
Planning/Environmental								
Design								
Right Of Way								
Construction								
Environmental Monitoring								

\*Prior FY includes actual revenue and expenditures through 6/30/2023, plus amounts estimated through 6/30/2024.



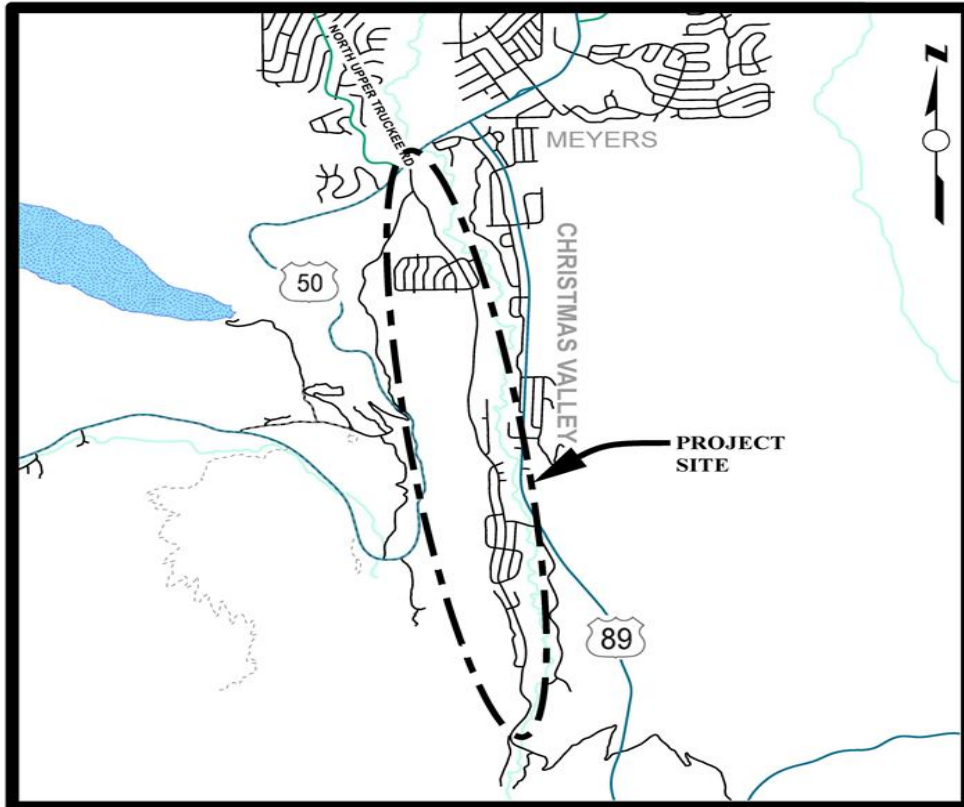
# South Upper Truckee Erosion Control Project

## CIP Project Summary

Project No: 36107013

Type: Erosion Control - (EIP)

Supervisor District(s) 5



## LOCATION MAP

NOT TO SCALE

### Project Description:

Treat eroding cut and fill slopes in County right-of-way. Reduce the very fine and fine sediment from the urban watersheds. Revegetation of disturbed areas. Install curb and gutter, rock-lined channels, sediment basins. Restore SEZ. Perform right-of-way acquisitions. This Project will most likely be split into several phases. It is anticipated that other grant funding will be available in the future through EIP grant funding programs available to the County.

Project Initiation Date: 12/6/2010



# South Upper Truckee Erosion Control Project

## Financing Plan & Tentative Schedule

Project No: 36107013

Type: Erosion Control - (EIP)

Supervisor District(s) 5

### All Figures in Thousands

Revenue Source	Prior FY*	FY 24/25	FY 25/26	FY 26/27	FY 27/28	FY 28/29	FY 29/30-33/34	FY 34/35-43/44	Total
Tahoe Regional Planning Agency/Stream Environmental Zone	65	12							77
Tahoe Regional Planning Agency/Water Quality	39	1							40
Erosion Control Fund	-1								-1
United States Forest Service (USFS)	39	285							324
American Rescue Plan Act (ARPA)	418								418
Totals	560	298							858

### All Figures in Thousands

Expenditures	Prior FY*	FY 24/25	FY 25/26	FY 26/27	FY 27/28	FY 28/29	FY 29/30-33/34	FY 34/35-43/44	Total
Plng/Env Consultant	300								300
Plng/Env DOT Staff	51								51
Design Consultant									
Developer Advanced Design									
Design DOT Staff	95								95
ROW Acquisition									
ROW Utility Relocation									
ROW Consultant									
ROW DOT Staff									
Constr Eng Consultant	46								46
Const Eng Staff	39	75							114
Construction	16	200							216
Developer Built									
Environmental Mitig. Monitor Consult.	1	1							2
Environmental Mitig. Monitor Staff	3	10							13
Plant Establishment - Consultant		2							2
Plant Establishment - Staff	7	10							17
Totals	560	298							858

Schedule	Prior FY*	FY 24/25	FY 25/26	FY 26/27	FY 27/28	FY 28/29	FY 29/30-33/34	FY 34/35-43/44
Planning/Environmental								
Design								
Right Of Way								
Construction								
Environmental Monitoring								

\*Prior FY includes actual revenue and expenditures through 6/30/2023, plus amounts estimated through 6/30/2024.