

Section 4.2

Tahoe Environmental Improvement Program Individual Project Summaries



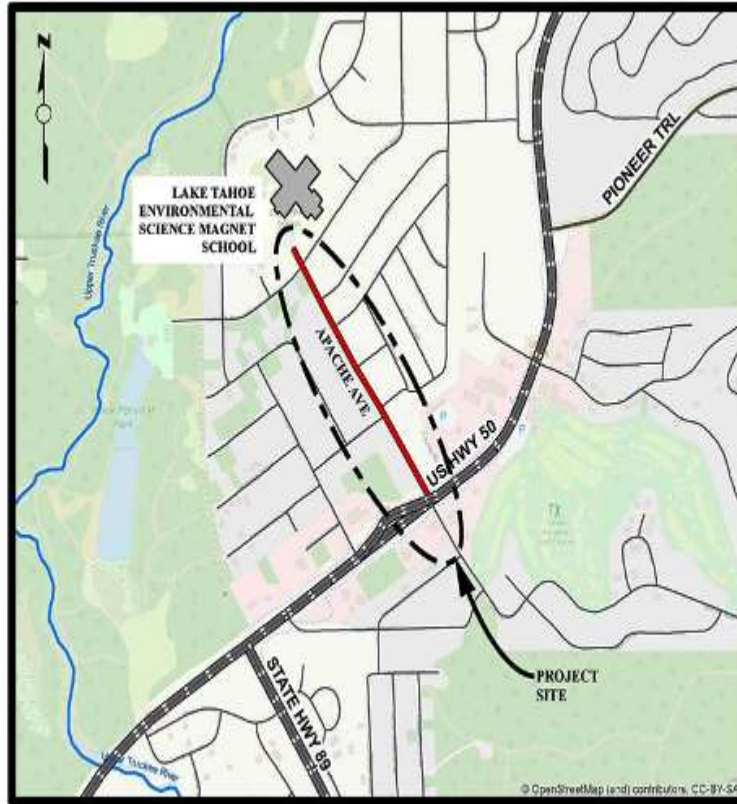
Apache Avenue Pedestrian Safety and Connectivity Project

CIP Project Summary

Project No: 36107021

Type: Pedestrian Way/Bike Path

Supervisor District(s) 5



LOCATION MAP

NOT TO SCALE

Project Description:

Apache Avenue is a major collector that serves motorists, cyclists, and pedestrians that access residences, parks, and schools. This project will reconstruct Apache Avenue from US 50 to the Lake Tahoe Environmental Science Magnet School, improve use of existing right of way by also adding class 2 bicycle lanes, a class 1 multi-use path on one side of the road and a sidewalk on the other side of the road.

Project Initiation Date: 3/6/2018



Apache Avenue Pedestrian Safety and Connectivity Project

Financing Plan & Tentative Schedule

Project No: 36107021

Type: Pedestrian Way/Bike Path

Supervisor District(s) 5

All Figures in Thousands

Revenue Source	Prior FY*	FY 23/24	FY 24/25	FY 25/26	FY 26/27	FY 27/28	FY 28/29-32/33	FY 33/34-42/43	Total
Tahoe Regional Planning Agency/Mobility Mitigation	29								29
Congestion Mitigation and Air Quality Program (CMAQ)									
RSTP Fed Funds – Caltrans LA	318	135	547						1,000
Carbon Reduction Program		400							400
Tahoe Regional Planning Agency/Water Quality	14	128	211	20					373
Active Transportation Program (ATP)		362	1,339						1,701
Totals	361	1,025	2,097	20					3,503

All Figures in Thousands

Expenditures	Prior FY*	FY 23/24	FY 24/25	FY 25/26	FY 26/27	FY 27/28	FY 28/29-32/33	FY 33/34-42/43	Total
Plng/Env Consultant	22								22
Plng/Env DOT Staff	135								135
Design Consultant									
Developer Advanced Design									
Design DOT Staff	204	140							344
ROW Acquisition									
ROW Utility Relocation									
ROW Consultant									
ROW DOT Staff									
Constr Eng Consultant		17	10						27
Const Eng Staff		100	272						372
Construction		768	1,795						2,563
Developer Built									
Environmental Mitig. Monitor Consult.									
Environmental Mitig. Monitor Staff			20	20					40
Plant Establishment - Consultant									
Plant Establishment - Staff									
Totals	361	1,025	2,097	20					3,503

Schedule	Prior FY*	FY 23/24	FY 24/25	FY 25/26	FY 26/27	FY 27/28	FY 28/29-32/33	FY 33/34-42/43
Planning/Environmental								
Design								
Construction								
Environmental Monitoring								

*Prior FY includes actual revenue and expenditures through 6/30/2022, plus amounts estimated through 6/30/2023.



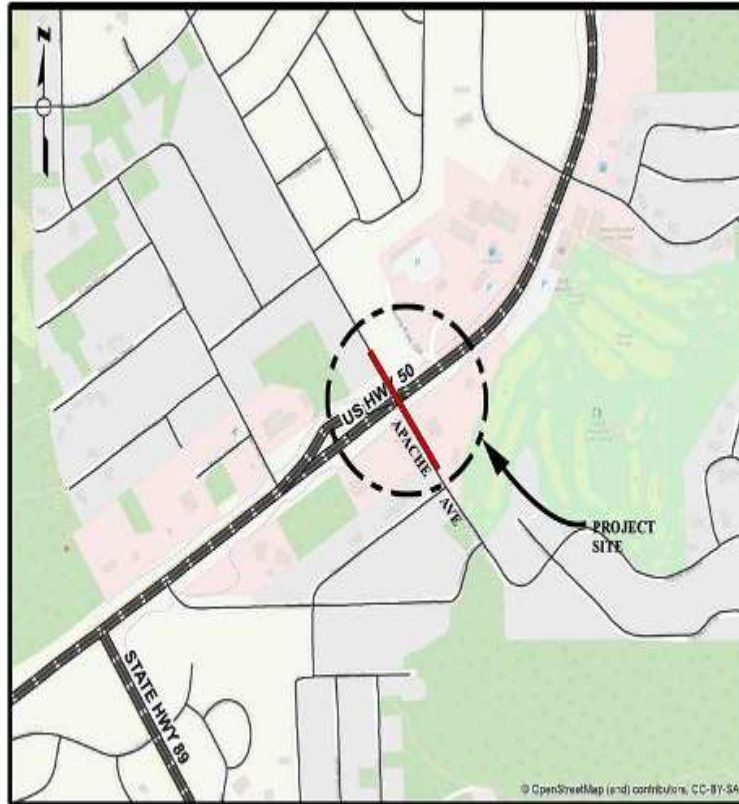
Apache Avenue/US Highway 50 Intersection Improvement Project

CIP Project Summary

Project No: 36104016

Type: Intersection

Supervisor District(s) 5



LOCATION MAP

NOT TO SCALE

Project Description:

Planning, design and construction of improvements to the existing intersection of US 50 and Apache Avenue in the community region of Meyers in the Tahoe Basin. Improvements to include either a roundabout or an upgraded intersection and enhancements to pedestrian and bicycle facilities in the vicinity of the intersection.

Project Initiation Date: 3/28/2017



Apache Avenue/US Highway 50 Intersection Improvement Project

Financing Plan & Tentative Schedule

Project No: 36104016

Type: Intersection

Supervisor District(s) 5

All Figures in Thousands

Revenue Source	Prior FY*	FY 23/24	FY 24/25	FY 25/26	FY 26/27	FY 27/28	FY 28/29-32/33	FY 33/34-42/43	Total
RSTP Exchange Funds-TRPA									
Tahoe Regional Planning Agency/Mobility Mitigation									
Congestion Mitigation and Air Quality Program (CMAQ)									
To Be Determined				87	1,350				1,437
Totals				87	1,350				1,437

All Figures in Thousands

Expenditures	Prior FY*	FY 23/24	FY 24/25	FY 25/26	FY 26/27	FY 27/28	FY 28/29-32/33	FY 33/34-42/43	Total
PIng/Env Consultant									
PIng/Env DOT Staff									
Design Consultant									
Developer Advanced Design									
Design DOT Staff				87					87
ROW Acquisition									
ROW Utility Relocation									
ROW Consultant									
ROW DOT Staff									
Constr Eng Consultant					150				150
Const Eng Staff					200				200
Construction					1,000				1,000
Developer Built									
Environmental Mitig. Monitor Consult.									
Environmental Mitig. Monitor Staff									
Plant Establishment - Consultant									
Plant Establishment - Staff									
Totals				87	1,350				1,437

Schedule	Prior FY*	FY 23/24	FY 24/25	FY 25/26	FY 26/27	FY 27/28	FY 28/29-32/33	FY 33/34-42/43
Design								
Construction								

*Prior FY includes actual revenue and expenditures through 6/30/2022, plus amounts estimated through 6/30/2023.



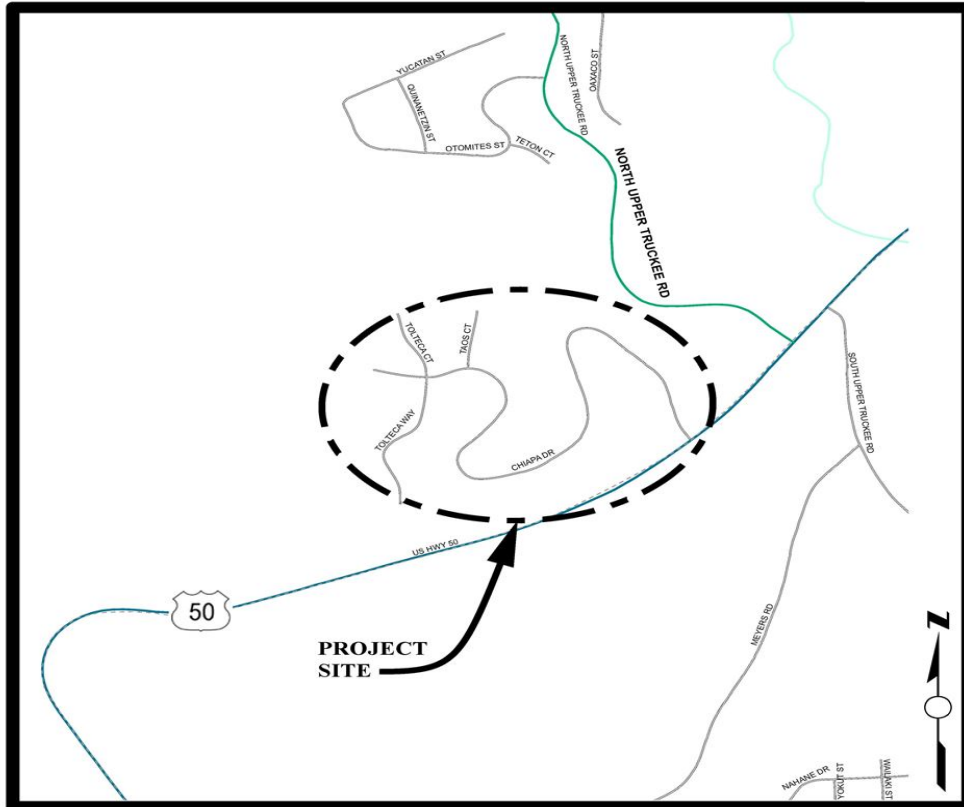
Chiapa Erosion Control Project

CIP Project Summary

Project No: 36107011

Type: Erosion Control - (EIP)

Supervisor District(s) 5



LOCATION MAP

NOT TO SCALE

Project Description:

The Chiapa Erosion Control Project encompasses the streets of Chiapa Drive, Tolteca Court and Taos Court. The main goal of the Project is to improve the clarity of Lake Tahoe by reducing the detrimental water quality impacts of Tahoe Paradise Unit No. 34 subdivision on Lake Tahoe clarity. The objective of the Project is the reduction in the transport of fine sediment from the Project area by constructing water quality Best Management Practices (BMPs) prior to reaching the Upper Truckee River to the maximum extent practicable.

Project Initiation Date: 6/23/2009



Chiapa Erosion Control Project

Financing Plan & Tentative Schedule

Project No: 36107011

Type: Erosion Control - (EIP)

Supervisor District(s) 5

All Figures in Thousands

Revenue Source	Prior FY*	FY 23/24	FY 24/25	FY 25/26	FY 26/27	FY 27/28	FY 28/29-32/33	FY 33/34-42/43	Total
California Tahoe Conservancy (CTC)									
Erosion Control Fund									
United States Forest Service (USFS)									
Tahoe Regional Planning Agency/Water Quality							45		45
To Be Determined							1,816		1,816
Totals							1,861		1,861

All Figures in Thousands

Expenditures	Prior FY*	FY 23/24	FY 24/25	FY 25/26	FY 26/27	FY 27/28	FY 28/29-32/33	FY 33/34-42/43	Total
Png/Env Consultant							110		110
Png/Env DOT Staff							81		81
Design Consultant							40		40
Developer Advanced Design									
Design DOT Staff							270		270
ROW Acquisition							10		10
ROW Utility Relocation									
ROW Consultant							6		6
ROW DOT Staff							20		20
Constr Eng Consultant									
Const Eng Staff							260		260
Construction							1,000		1,000
Developer Built									
Environmental Mitig. Monitor Consult.							20		20
Environmental Mitig. Monitor Staff							20		20
Plant Establishment - Consultant							12		12
Plant Establishment - Staff							12		12
Totals							1,861		1,861

Schedule	Prior FY*	FY 23/24	FY 24/25	FY 25/26	FY 26/27	FY 27/28	FY 28/29-32/33	FY 33/34-42/43
Planning/Environmental								
Design								
Right Of Way								
Construction								
Environmental Monitoring								

*Prior FY includes actual revenue and expenditures through 6/30/2022, plus amounts estimated through 6/30/2023.



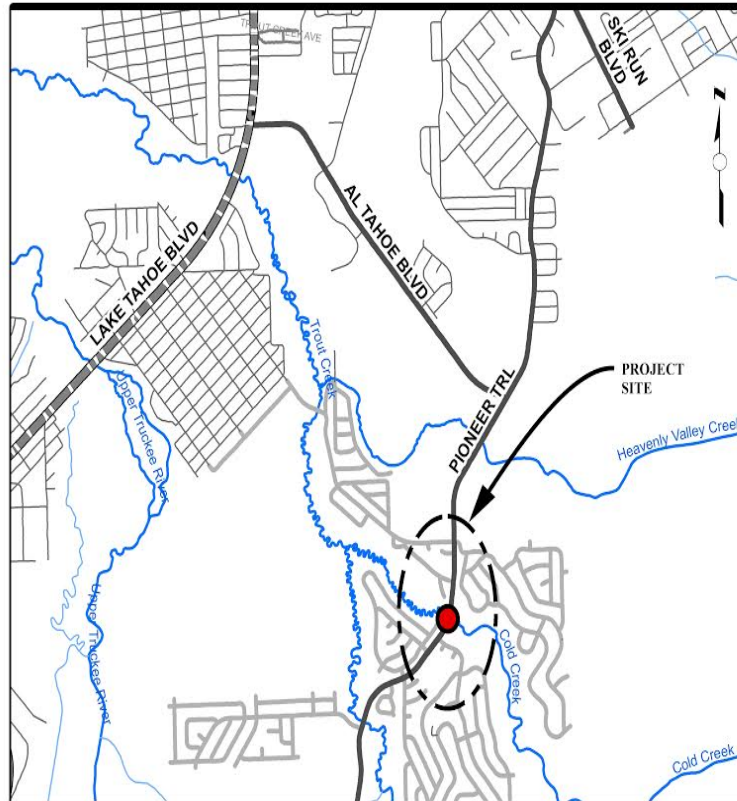
Cold Creek Fisheries Project

CIP Project Summary

Project No: 36107018

Type: Erosion Control - (EIP)

Supervisor District(s) 5



LOCATION MAP

NOT TO SCALE

Project Description:

The original Project scope was to complete a comprehensive stream corridor restoration effort which included a 1 mile reach of Cold Creek, the STPUD access road, the culvert at Pioneer Trail, and the CSLT Globin Ponds. An existing Conditions Analysis Report was completed in May of 2006 which described the majority of the problems within this corridor and opportunities and constraints for the Project alternatives. Upon TAC review of the Report and further discussions with respect to the scope of work it was decided to reduce the scope of work for the County Project to just the culvert at Pioneer Trail. Therefore, the current Project includes addressing the culvert at Pioneer Trail with respect to fish passage only. The goals of this Project are to enhance/improve fisheries and riparian habitat along a portion of Cold Creek, reduce sediment load from adjacent road and reduce sediment load from adjacent slopes.

Project Initiation Date: TBD



Cold Creek Fisheries Project

Financing Plan & Tentative Schedule

Project No: 36107018

Type: Erosion Control - (EIP)

Supervisor District(s) 5

All Figures in Thousands

Revenue Source	Prior FY*	FY 23/24	FY 24/25	FY 25/26	FY 26/27	FY 27/28	FY 28/29-32/33	FY 33/34-42/43	Total
California Tahoe Conservancy (CTC)	275								275
California Department of Fish & Wildlife (CDFW)									
Tahoe Regional Planning Agency/Stream Environmental Zone					50				50
Erosion Control Fund									
To Be Determined				626	1,324		22		1,972
Totals	275			626	1,374		22		2,297

All Figures in Thousands

Expenditures	Prior FY*	FY 23/24	FY 24/25	FY 25/26	FY 26/27	FY 27/28	FY 28/29-32/33	FY 33/34-42/43	Total
Png/Env Consultant				170					170
Png/Env DOT Staff				85					85
Design Consultant	198			50					248
Developer Advanced Design									
Design DOT Staff	51			255					306
ROW Acquisition									
ROW Utility Relocation									
ROW Consultant				11					11
ROW DOT Staff				55					55
Constr Eng Consultant					28				28
Const Eng Staff					140				140
Construction					1,150				1,150
Developer Built									
Environmental Mitig. Monitor Consult.	18								18
Environmental Mitig. Monitor Staff	8				28		11		47
Plant Establishment - Consultant									
Plant Establishment - Staff					28		11		39
Totals	275			626	1,374		22		2,297

Schedule	Prior FY*	FY 23/24	FY 24/25	FY 25/26	FY 26/27	FY 27/28	FY 28/29-32/33	FY 33/34-42/43
Planning/Environmental								
Design								
Right Of Way								
Construction								
Environmental Monitoring								

*Prior FY includes actual revenue and expenditures through 6/30/2022, plus amounts estimated through 6/30/2023.



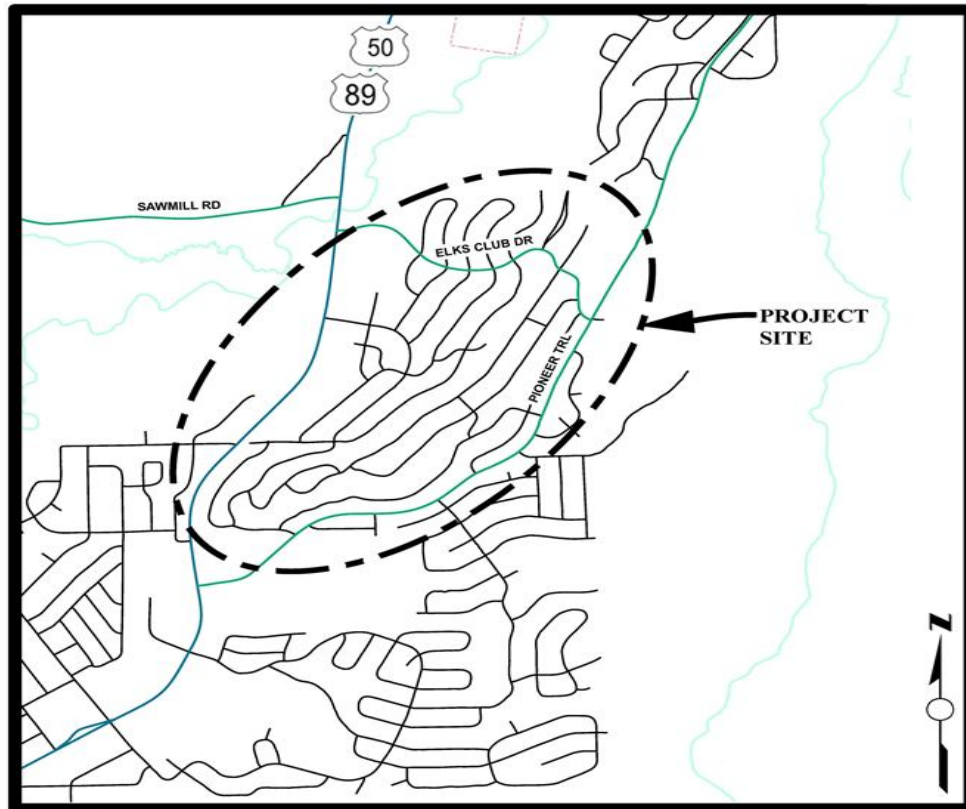
Country Club Heights Erosion Control Project

CIP Project Summary

Project No: 36107009

Type: Erosion Control - (EIP)

Supervisor District(s) 5



LOCATION MAP

NOT TO SCALE

Project Description:

The Country Club Heights Erosion Control Project is within the Country Club Heights subdivision (Units 1-5), more specifically between Crystal Air Drive at the upper southerly boundary to U.S. Highway 50 to the north and Thunderbird Drive at the upper westerly boundary to the Upper Truckee River to the west. The main goal of this Project is to reduce very fine/fine sediment from the County right-of-way from reaching the Upper Truckee River near Elks Club Road to the Total Maximum Daily Level (TMDL) set by Lahontan Regional Water Quality Control Board under the National Pollution Discharge Elimination System (NPDES) permit conditions.

Project Initiation Date: 7/1/2011

*Prior FY includes actual revenue and expenditures through 6/30/2022, plus amounts estimated through 6/30/2023.



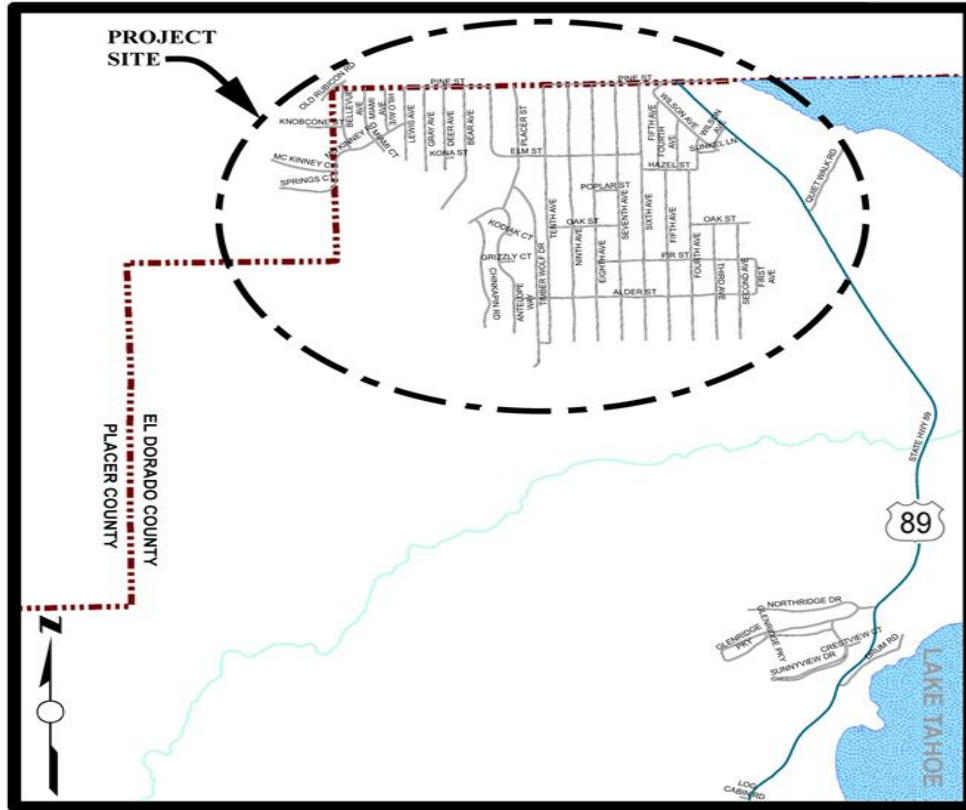
County Service Area (CSA) #5 Erosion Control Project

CIP Project Summary

Project No: 36107003

Type: Erosion Control - (EIP)

Supervisor District(s) 5



LOCATION MAP

NOT TO SCALE

Project Description:

This project is located in the far northeasterly corner of El Dorado County in Tahoma. The goal of the project is to improve the clarity of Lake Tahoe by reducing the detrimental water quality impacts of the CSA 5 subdivision in Tahoma by replacing existing drainage infrastructure with modern components that allow sediment to drop out of the drainage systems before being conveyed into Lake Tahoe.

Project Initiation Date: 10/26/1998



County Service Area (CSA) #5 Erosion Control Project

Financing Plan & Tentative Schedule

Project No: 36107003

Type: Erosion Control - (EIP)

Supervisor District(s) 5

All Figures in Thousands

Revenue Source	Prior FY*	FY 23/24	FY 24/25	FY 25/26	FY 26/27	FY 27/28	FY 28/29-32/33	FY 33/34-42/43	Total
Erosion Control Fund									
Tahoe Regional Planning Agency/Water Quality	100								100
South Tahoe Public Utility District (STPUD)	75								75
United States Forest Service (USFS)	794	125	337						1,255
County Service Area (CSA 5)	200	200							400
To Be Determined		37		10					47
Totals	1,168	361	337	10					1,876

All Figures in Thousands

Expenditures	Prior FY*	FY 23/24	FY 24/25	FY 25/26	FY 26/27	FY 27/28	FY 28/29-32/33	FY 33/34-42/43	Total
Plng/Env Consultant	78								78
Plng/Env DOT Staff	197								197
Design Consultant									
Developer Advanced Design									
Design DOT Staff	253	36							289
ROW Acquisition									
ROW Utility Relocation									
ROW Consultant									
ROW DOT Staff									
Constr Eng Consultant	2								2
Const Eng Staff	89	50	18						157
Construction	527	275	300						1,102
Developer Built									
Environmental Mitig. Monitor Consult.			1						1
Environmental Mitig. Monitor Staff	22		8	10					39
Plant Establishment - Consultant			5						5
Plant Establishment - Staff			5						5
Totals	1,168	361	337	10					1,876

Schedule	Prior FY*	FY 23/24	FY 24/25	FY 25/26	FY 26/27	FY 27/28	FY 28/29-32/33	FY 33/34-42/43
Planning/Environmental								
Design								
Right Of Way								
Construction								
Environmental Monitoring								

*Prior FY includes actual revenue and expenditures through 6/30/2022, plus amounts estimated through 6/30/2023.



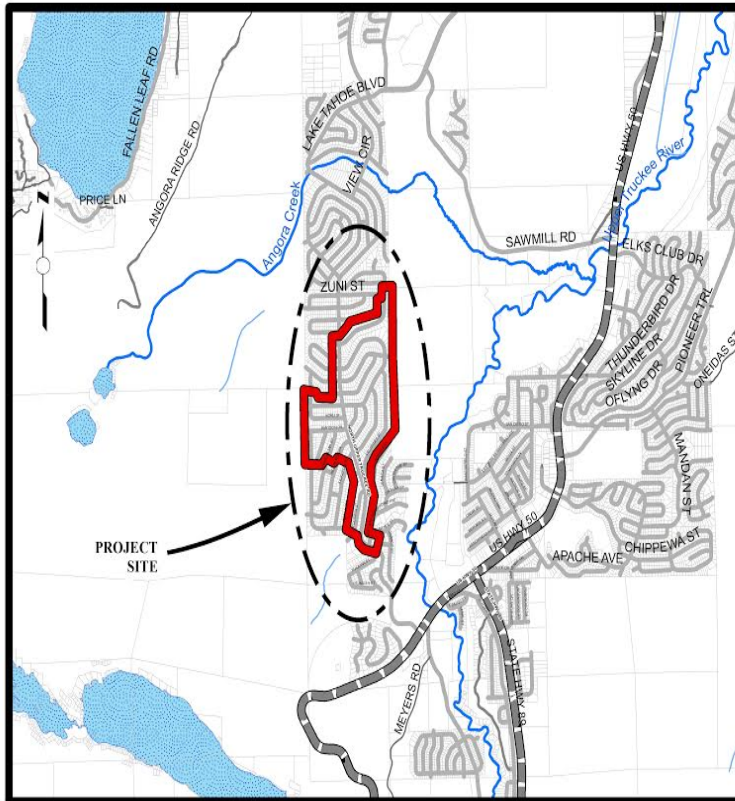
Delaware Water Quality Project

CIP Project Summary

Project No: 36107019

Type: Erosion Control - (EIP)

Supervisor District(s) 5



LOCATION MAP

NOT TO SCALE

Project Description:

This Project encompasses the Tahoe Paradise Units No. 20, 22, 23, and 24 subdivisions, which includes Delaware Street, Kiowa Drive, and Kickapoo Street. The primary goal of the Project is to improve the clarity of Lake Tahoe by reducing detrimental water quality impacts that are a result of the development of Tahoe Paradise Units No. 20, 22, 23, and 24. The objective of the Project is the reduction of the transport of fine sediment from the Project area to the Upper Truckee River by construction water quality Best Management Practices.

Project Initiation Date: 2/9/2017



Delaware Water Quality Project

Financing Plan & Tentative Schedule

Project No: 36107019

Type: Erosion Control - (EIP)

Supervisor District(s) 5

All Figures in Thousands

Revenue Source	Prior FY*	FY 23/24	FY 24/25	FY 25/26	FY 26/27	FY 27/28	FY 28/29-32/33	FY 33/34-42/43	Total
Tahoe Regional Planning Agency/Water Quality					5	4	21		29
To Be Determined					235	480	7		722
Erosion Control Fund									
Totals					240	483	28		751

All Figures in Thousands

Expenditures	Prior FY*	FY 23/24	FY 24/25	FY 25/26	FY 26/27	FY 27/28	FY 28/29-32/33	FY 33/34-42/43	Total
Plng/Env Consultant					35				35
Plng/Env DOT Staff					50				50
Design Consultant									
Developer Advanced Design									
Design DOT Staff					150				150
ROW Acquisition									
ROW Utility Relocation									
ROW Consultant									
ROW DOT Staff									
Constr Eng Consultant						3			3
Const Eng Staff					5	70	10		85
Construction						400			400
Developer Built									
Environmental Mitig. Monitor Consult.						2	2		4
Environmental Mitig. Monitor Staff						5	10		15
Plant Establishment - Consultant						1	1		2
Plant Establishment - Staff						3	5		8
Totals					240	483	28		751

Schedule	Prior FY*	FY 23/24	FY 24/25	FY 25/26	FY 26/27	FY 27/28	FY 28/29-32/33	FY 33/34-42/43
Planning/Environmental								
Design								
Construction								
Environmental Monitoring								

*Prior FY includes actual revenue and expenditures through 6/30/2022, plus amounts estimated through 6/30/2023.



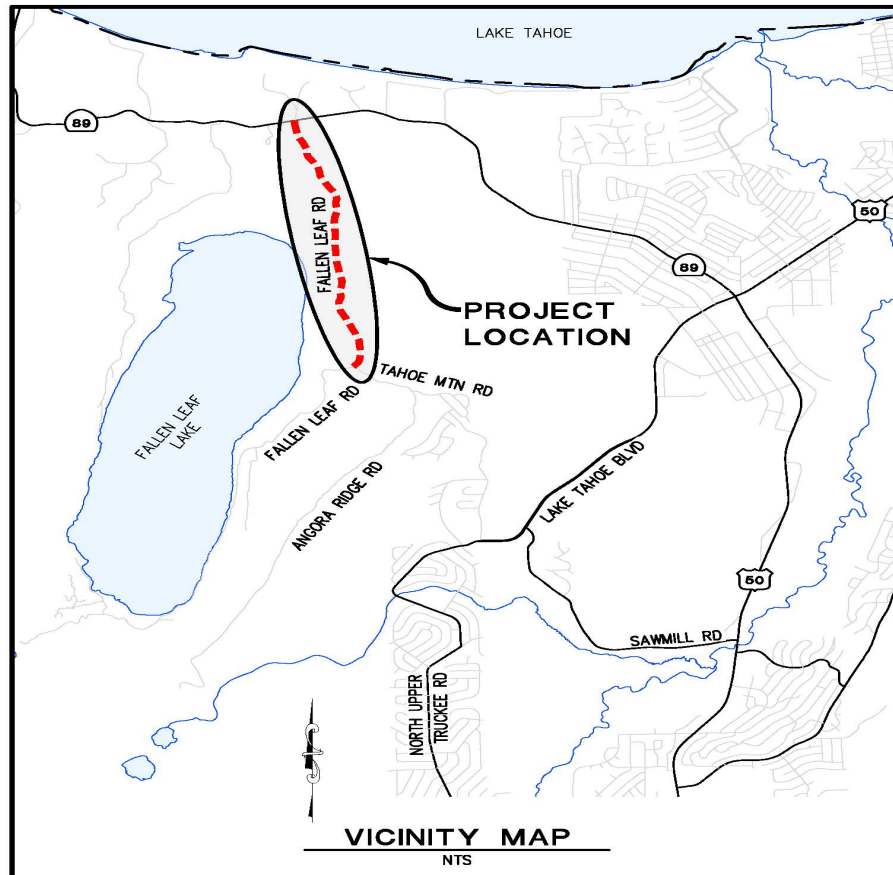
Fallen Leaf Road Pavement Rehabilitation Project

CIP Project Summary

Project No: 36105077

Type: Roadway

Supervisor District(s) 5



Project Description:

Fallen Leaf Road is 4.9 miles long and extends from SR 89 to the southern end of Fallen Leaf Lake at Stanford Sierra Camp. The proposed project is to complete roadway improvements along a 2-mile segment of Fallen Leaf Road from SR 89 to Tahoe Mountain Road. Future phases of this project will address rehabilitation of the roadway from Tahoe Mountain to Glen Alpine Creek.

Project Initiation Date: 3/1/2022



Fallen Leaf Road Pavement Rehabilitation Project

Financing Plan & Tentative Schedule

Project No: 36105077

Type: Roadway

Supervisor District(s) 5

All Figures in Thousands

Revenue Source	Prior FY*	FY 23/24	FY 24/25	FY 25/26	FY 26/27	FY 27/28	FY 28/29-32/33	FY 33/34-42/43	Total
Road Fund							375		375
To Be Determined					250	400	2,100		2,750
Totals					250	400	2,475		3,125

All Figures in Thousands

Expenditures	Prior FY*	FY 23/24	FY 24/25	FY 25/26	FY 26/27	FY 27/28	FY 28/29-32/33	FY 33/34-42/43	Total
Plng/Env Consultant					125				125
Plng/Env DOT Staff					125				125
Design Consultant									
Developer Advanced Design									
Design DOT Staff						300			300
ROW Acquisition									
ROW Utility Relocation									
ROW Consultant						100			100
ROW DOT Staff									
Constr Eng Consultant							20		20
Const Eng Staff							270		270
Construction							2,150		2,150
Developer Built									
Environmental Mitig. Monitor Consult.							5		5
Environmental Mitig. Monitor Staff							10		10
Plant Establishment - Consultant							10		10
Plant Establishment - Staff							10		10
Totals					250	400	2,475		3,125

Schedule	Prior FY*	FY 23/24	FY 24/25	FY 25/26	FY 26/27	FY 27/28	FY 28/29-32/33	FY 33/34-42/43
Planning/Environmental								
Design								
Right Of Way								
Construction								
Environmental Monitoring								

*Prior FY includes actual revenue and expenditures through 6/30/2022, plus amounts estimated through 6/30/2023.



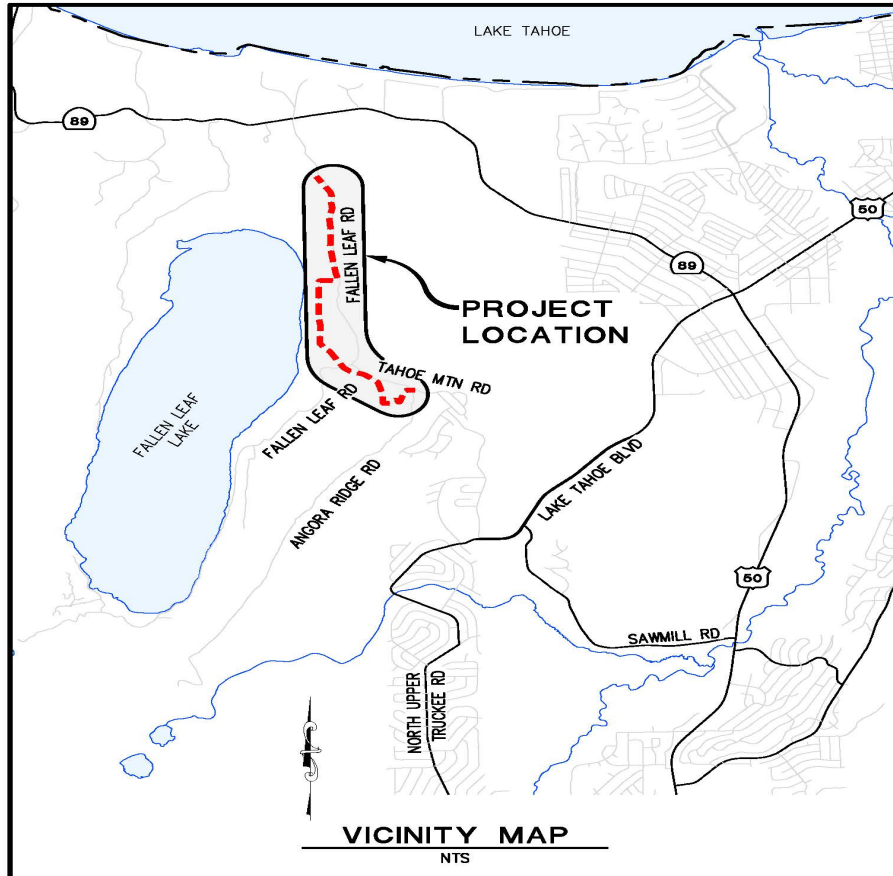
Fallen Leaf Road Recreational Access Project

CIP Project Summary

Project No: 36105050

Type: Roadway

Supervisor District(s) 5



Project Description:

The Fallen Leaf Road Recreational Access Project will minimize pedestrian, bicyclists, and vehicle conflicts that occur on Fallen Leaf Road between the Fallen Leaf campground and Tahoe Mountain Road. The proposed project will include construction of approximately 2.2 miles of shared-use path with paved trailhead parking at either end of the path. The project would start at Fallen Leaf Campground and end near the intersection of Tahoe Mountain Road and Angora Ridge Road.

Project Initiation Date: 3/6/2018



Fallen Leaf Road Recreational Access Project

Financing Plan & Tentative Schedule

Project No: 36105050

Type: Roadway

Supervisor District(s) 5

All Figures in Thousands

Revenue Source	Prior FY*	FY 23/24	FY 24/25	FY 25/26	FY 26/27	FY 27/28	FY 28/29-32/33	FY 33/34-42/43	Total
Tahoe Regional Planning Agency/Mobility Mitigation			27	20	20				67
Road Fund									
Federal Lands Access Program (FLAP)									
To Be Determined			173	220	90	1,208	1,190		2,881
RSTP Exchange Funds-TRPA	13	10							23
Totals	13	10	200	240	110	1,208	1,190		2,971

All Figures in Thousands

Expenditures	Prior FY*	FY 23/24	FY 24/25	FY 25/26	FY 26/27	FY 27/28	FY 28/29-32/33	FY 33/34-42/43	Total
Png/Env Consultant			50						50
Png/Env DOT Staff	13	10	150						173
Design Consultant					55				55
Developer Advanced Design									
Design DOT Staff				200	55				255
ROW Acquisition									
ROW Utility Relocation									
ROW Consultant									
ROW DOT Staff				40					40
Constr Eng Consultant						23			23
Const Eng Staff						185	100		285
Construction						1,000	1,000		2,000
Developer Built									
Environmental Mitig. Monitor Consult.							22		22
Environmental Mitig. Monitor Staff							22		22
Plant Establishment - Consultant							23		23
Plant Establishment - Staff							23		23
Totals	13	10	200	240	110	1,208	1,190		2,971

Schedule	Prior FY*	FY 23/24	FY 24/25	FY 25/26	FY 26/27	FY 27/28	FY 28/29-32/33	FY 33/34-42/43
Planning/Environmental								
Design								
Right Of Way								
Construction								
Environmental Monitoring								

*Prior FY includes actual revenue and expenditures through 6/30/2022, plus amounts estimated through 6/30/2023.



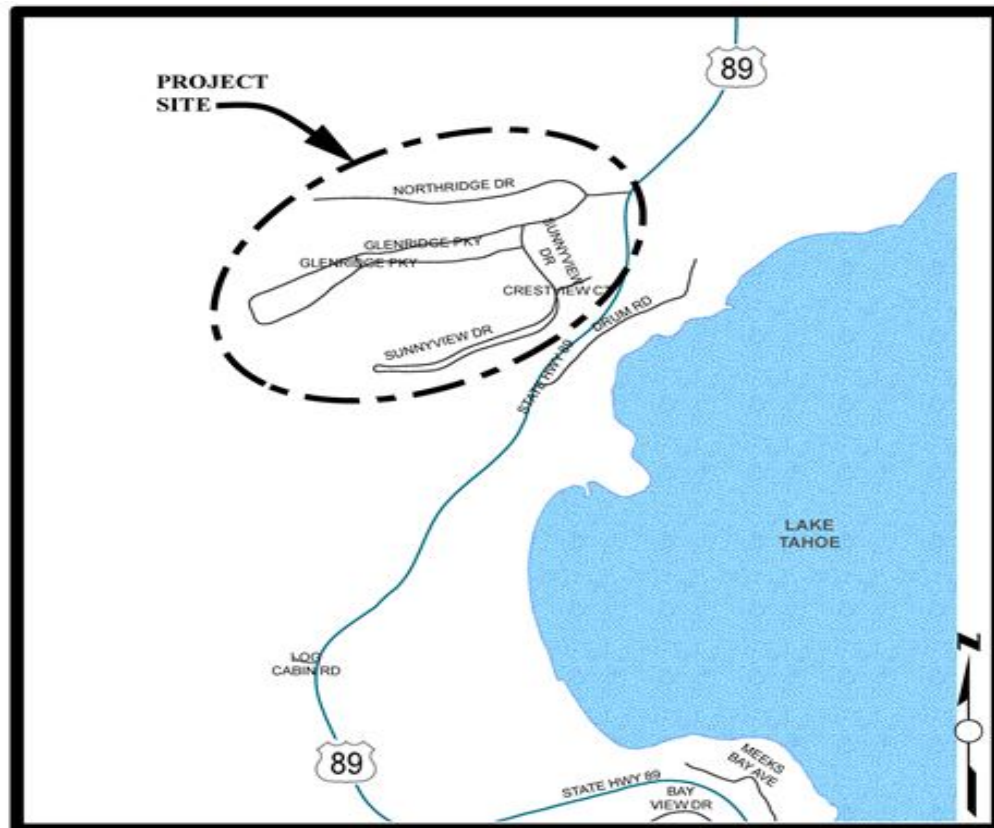
Glenridge Erosion Control Project

CIP Project Summary

Project No: 36107014

Type: Erosion Control - (EIP)

Supervisor District(s) 5



LOCATION MAP

NOT TO SCALE

Project Description:

The Glenridge Erosion Control Project is bounded by the Northridge Drive to the north, forested lands to the west, State Route 89 to the east and Sunnyview Drive to the south. The main goal of the Project is to improve the clarity of Lake Tahoe by reducing the detrimental water quality impacts of the Glenridge Park Unit No. 1 subdivision on Lake Tahoe clarity. The objective of the Project is the reduction in the transport of fine sediment from the Project area by constructing water quality Best Management Practices (BMPs) prior to reaching Lake Tahoe to the maximum extent practicable.

Project Initiation Date: 6/23/2009



Glenridge Erosion Control Project

Financing Plan & Tentative Schedule

Project No: 36107014

Type: Erosion Control - (EIP)

Supervisor District(s) 5

All Figures in Thousands

Revenue Source	Prior FY*	FY 23/24	FY 24/25	FY 25/26	FY 26/27	FY 27/28	FY 28/29-32/33	FY 33/34-42/43	Total
California Tahoe Conservancy (CTC)									
Tahoe Regional Planning Agency/Water Quality							51		51
United States Forest Service (USFS)									
Erosion Control Fund									
To Be Determined					170		1,512		1,682
Totals					170		1,563		1,733

All Figures in Thousands

Expenditures	Prior FY*	FY 23/24	FY 24/25	FY 25/26	FY 26/27	FY 27/28	FY 28/29-32/33	FY 33/34-42/43	Total
Png/Env Consultant					75				75
Png/Env DOT Staff					45				45
Design Consultant									
Developer Advanced Design									
Design DOT Staff					50		150		200
ROW Acquisition							6		6
ROW Utility Relocation									
ROW Consultant							4		4
ROW DOT Staff							13		13
Constr Eng Consultant							40		40
Const Eng Staff							200		200
Construction							1,000		1,000
Developer Built									
Environmental Mitig. Monitor Consult.							10		10
Environmental Mitig. Monitor Staff							10		10
Plant Establishment - Consultant							13		13
Plant Establishment - Staff							118		118
Totals					170		1,563		1,733

Schedule	Prior FY*	FY 23/24	FY 24/25	FY 25/26	FY 26/27	FY 27/28	FY 28/29-32/33	FY 33/34-42/43
Planning/Environmental								
Design								
Right Of Way								
Construction								
Environmental Monitoring								

*Prior FY includes actual revenue and expenditures through 6/30/2022, plus amounts estimated through 6/30/2023.



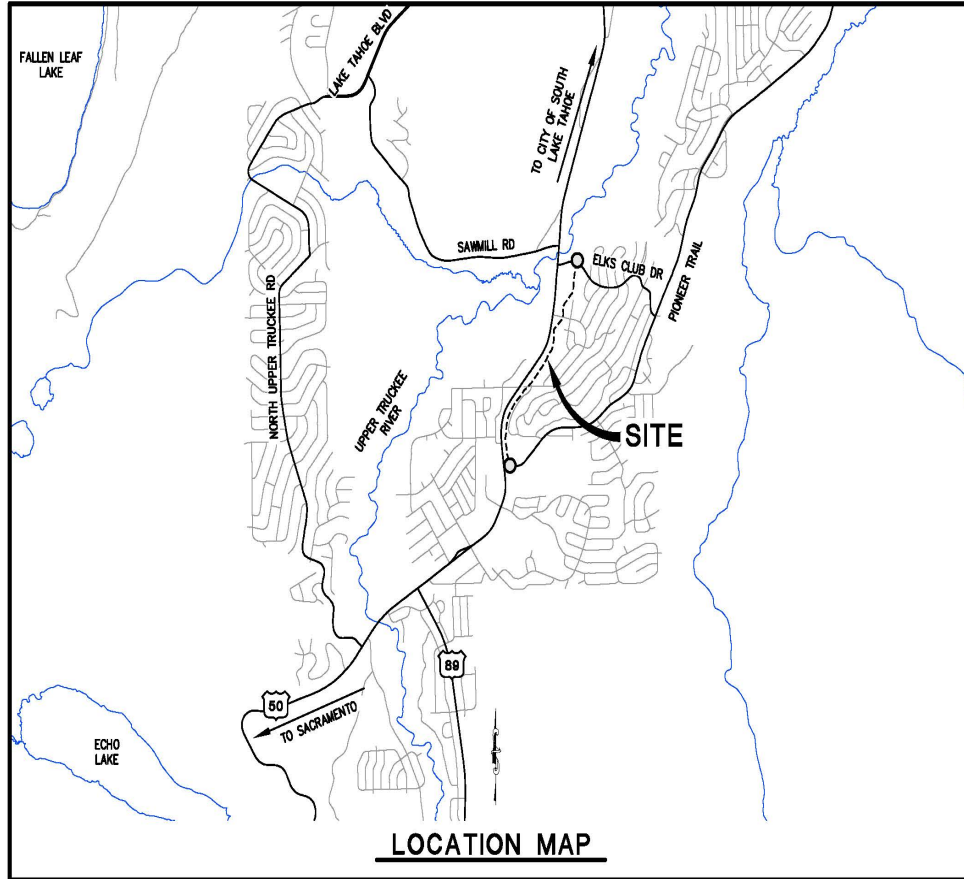
Greenway Shared Use Path - Meyers to Johnson Meadow

CIP Project Summary

Project No: 36107024

Type: Parks & Trails

Supervisor District(s) 5



Project Description:

The Meyers Bikeway Connector Project (Project) will implement shared use accessibility improvements to the community of Meyers between the intersection of US 50 with Pioneer Trail and Elks Club Drive. The proposed shared use path extension will connect residents in the County Club Heights neighborhood with the Community of Meyers.

Project Initiation Date: TBD



Greenway Shared Use Path - Meyers to Johnson Meadow

Financing Plan & Tentative Schedule

Project No: 36107024

Type: Parks & Trails

Supervisor District(s) 5

All Figures in Thousands

Revenue Source	Prior FY*	FY 23/24	FY 24/25	FY 25/26	FY 26/27	FY 27/28	FY 28/29-32/33	FY 33/34-42/43	Total
Erosion Control Fund									
To Be Determined		200	700						900
Totals		200	700						900

All Figures in Thousands

Expenditures	Prior FY*	FY 23/24	FY 24/25	FY 25/26	FY 26/27	FY 27/28	FY 28/29-32/33	FY 33/34-42/43	Total
Plng/Env Consultant									
Plng/Env DOT Staff		200	200						400
Design Consultant									
Developer Advanced Design									
Design DOT Staff			500						500
ROW Acquisition									
ROW Utility Relocation									
ROW Consultant									
ROW DOT Staff									
Constr Eng Consultant									
Const Eng Staff									
Construction									
Developer Built									
Environmental Mitig. Monitor Consult.									
Environmental Mitig. Monitor Staff									
Plant Establishment - Consultant									
Plant Establishment - Staff									
Totals		200	700						900

Schedule	Prior FY*	FY 23/24	FY 24/25	FY 25/26	FY 26/27	FY 27/28	FY 28/29-32/33	FY 33/34-42/43
Planning/Environmental								
Design								

*Prior FY includes actual revenue and expenditures through 6/30/2022, plus amounts estimated through 6/30/2023.



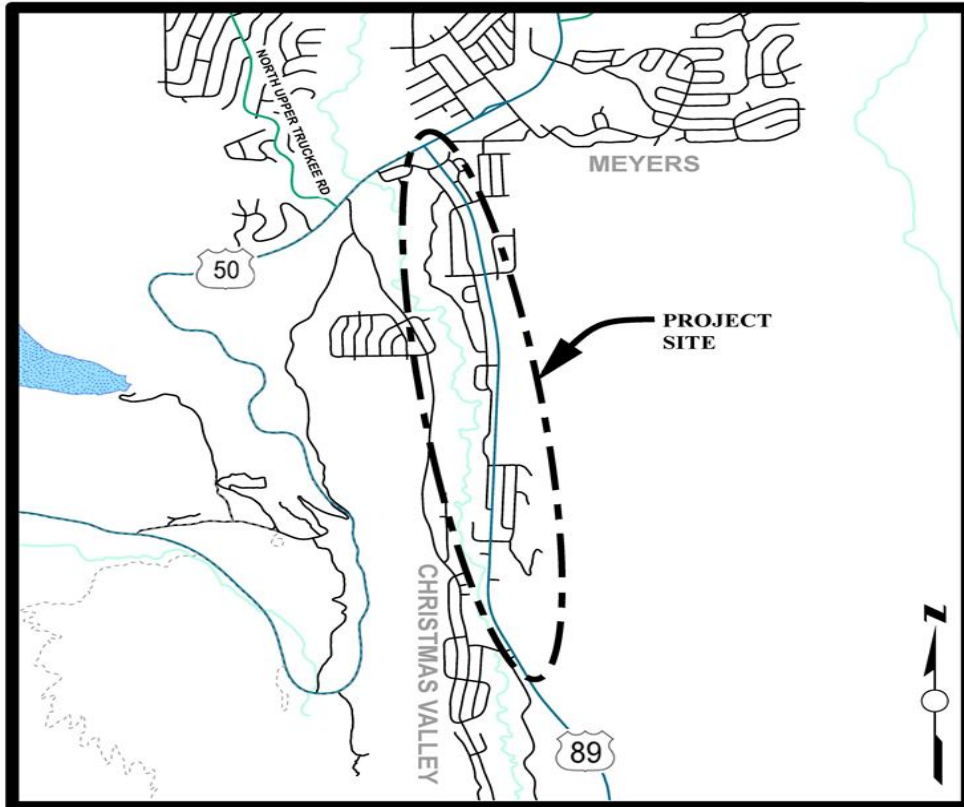
Highway 89 Class I Bike Path Project

CIP Project Summary

Project No: 36107010

Type: Pedestrian Way/Bike Path

Supervisor District(s) 5



LOCATION MAP

NOT TO SCALE

Project Description:

The Class I bikeway along State Route 89 from Portal Road to US Highway 50 in Christmas Valley is intended to improve the regional bicycle path network by providing a critical link through the Christmas Valley area. The purpose of the project is to provide access to local businesses, schools, and offices for bicyclists and pedestrians, to reduce vehicular transportation, and to enhance recreational opportunities within the Lake Tahoe Basin. This bicycle facility will connect to the existing Pat Lowe Memorial Bike Path in community of Meyers.

Project Initiation Date: 2/13/2007



Highway 89 Class I Bike Path Project

Financing Plan & Tentative Schedule

Project No: 36107010

Type: Pedestrian Way/Bike Path

Supervisor District(s) 5

All Figures in Thousands

Revenue Source	Prior FY*	FY 23/24	FY 24/25	FY 25/26	FY 26/27	FY 27/28	FY 28/29-32/33	FY 33/34-42/43	Total
To Be Determined							1,670		1,670
Tahoe Regional Planning Agency/Mobility Mitigation							441		441
Erosion Control Fund									
Totals							2,110		2,110

All Figures in Thousands

Expenditures	Prior FY*	FY 23/24	FY 24/25	FY 25/26	FY 26/27	FY 27/28	FY 28/29-32/33	FY 33/34-42/43	Total
Png/Env Consultant							25		25
Png/Env DOT Staff							77		77
Design Consultant									
Developer Advanced Design									
Design DOT Staff							175		175
ROW Acquisition									
ROW Utility Relocation									
ROW Consultant									
ROW DOT Staff									
Constr Eng Consultant							7		7
Const Eng Staff							372		372
Construction							1,420		1,420
Developer Built									
Environmental Mitig. Monitor Consult.									
Environmental Mitig. Monitor Staff							10		10
Plant Establishment - Consultant							1		1
Plant Establishment - Staff							24		24
Totals							2,110		2,110

Schedule	Prior FY*	FY 23/24	FY 24/25	FY 25/26	FY 26/27	FY 27/28	FY 28/29-32/33	FY 33/34-42/43
Planning/Environmental								
Design								
Construction								
Environmental Monitoring								

*Prior FY includes actual revenue and expenditures through 6/30/2022, plus amounts estimated through 6/30/2023.



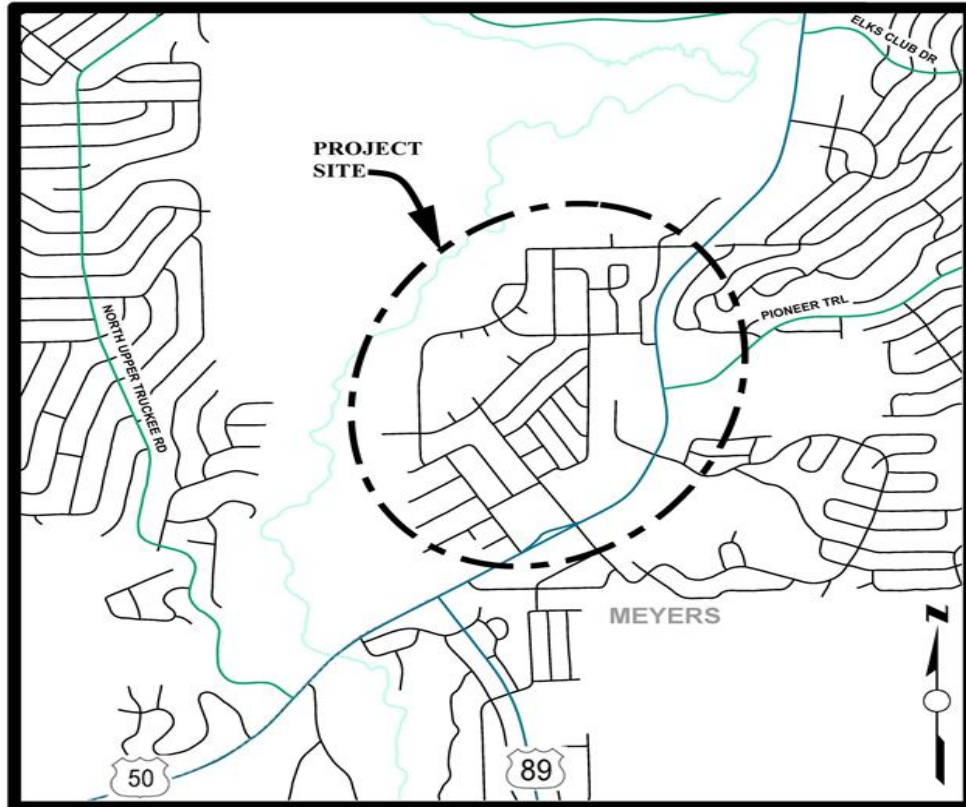
Meyers Stream Environment Zone/Erosion Control Project

CIP Project Summary

Project No: 36107007

Type: Erosion Control - (EIP)

Supervisor District(s) 5



LOCATION MAP

NOT TO SCALE

Project Description:

The Meyers Stream Environment Zone/Erosion Control Project is located in Tahoe Paradise-Meadowvale, Tahoe Paradise-Mandan and Meyers Residential. The main goal of the Project is to improve the clarity of Lake Tahoe by reducing the detrimental water quality impacts of the Meyers residential area on Lake Tahoe clarity. The objective of the Project is the reduction in the transport of fine sediment from the Project area by constructing water quality Best Management Practices (BMPs) within the Project area. This Project will be split into several areas with the main area focused on the US 50/Meyers corridor area based on the Pollutant Load reductions models.

Project Initiation Date: 12/15/2010



Meyers Stream Environment Zone/Erosion Control Project

Financing Plan & Tentative Schedule

Project No: 36107007

Type: Erosion Control - (EIP)

Supervisor District(s) 5

All Figures in Thousands

Revenue Source	Prior FY*	FY 23/24	FY 24/25	FY 25/26	FY 26/27	FY 27/28	FY 28/29-32/33	FY 33/34-42/43	Total
Tahoe Regional Planning Agency/Stream Environmental Zone	351	162							513
California Tahoe Conservancy (CTC)	1,096								1,096
State Water Resources Control Board		577							577
United States Forest Service (USFS)	1,050	1,100							2,150
Erosion Control Fund	-3								-3
Totals	2,495	1,839							4,334

All Figures in Thousands

Expenditures	Prior FY*	FY 23/24	FY 24/25	FY 25/26	FY 26/27	FY 27/28	FY 28/29-32/33	FY 33/34-42/43	Total
Png/Env Consultant	33								33
Png/Env DOT Staff	261								261
Design Consultant	24								24
Developer Advanced Design									
Design DOT Staff	612								612
ROW Acquisition									
ROW Utility Relocation									
ROW Consultant									
ROW DOT Staff									
Constr Eng Consultant	12								12
Const Eng Staff	190	473							662
Construction	1,318	1,367							2,684
Developer Built									
Environmental Mitig. Monitor Consult.									
Environmental Mitig. Monitor Staff	41								41
Plant Establishment - Consultant	1								1
Plant Establishment - Staff	3								3
Totals	2,495	1,839							4,334

Schedule	Prior FY*	FY 23/24	FY 24/25	FY 25/26	FY 26/27	FY 27/28	FY 28/29-32/33	FY 33/34-42/43
Planning/Environmental								
Design								
Right Of Way								
Construction								
Environmental Monitoring								

*Prior FY includes actual revenue and expenditures through 6/30/2022, plus amounts estimated through 6/30/2023.



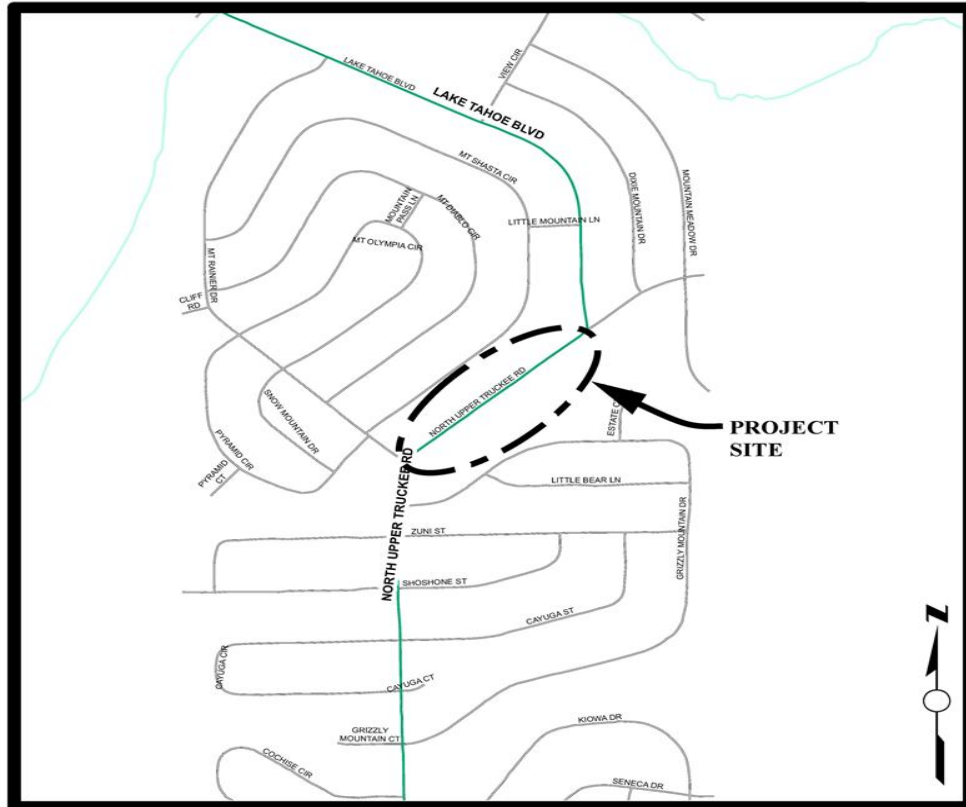
North Upper Truckee SEZ Restoration Project

CIP Project Summary

Project No: 36107012

Type: Erosion Control - (EIP)

Supervisor District(s) 5



LOCATION MAP

NOT TO SCALE

Project Description:

The main goal of the project is to restore Lake Tahoe's clarity and protect a sensitive stream environment zone (SEZ) through effective and safe conveyance of urban runoff from the project area and the downstream to treatment facilities. The current condition allows for excessive sediment and nutrient transport to the SEZ through uncontrolled urban runoff conveyance, directly discharging to a perennial stream historically known as "Slump Alley". Slump Alley is a sensitive riparian area with annual flows that house a unique brook trout population and sensitive stream environment zone that flows to protected California State Park lands known as the Washoe Meadows State Park. The current configuration requires the use of roadside ditching and excessive road maintenance disturbance, due to surface elevation of the road being equal to or lower than the surrounding SEZ. This Project intends to responsibly convey water from the existing road along North Upper Truckee Road and down Lake Tahoe Boulevard to Mountain Meadow Drive, which will provide water quality, SEZ restoration, fisheries, general transportation and social benefits to Lake Tahoe and the surrounding community. The proposed project will evaluate the best methods to alleviate the current road impacts to the SEZ through a responsible and collaborative approach, with the best interest of the sens

Project Initiation Date: 2/13/2007



North Upper Truckee SEZ Restoration Project

Financing Plan & Tentative Schedule

Project No: 36107012

Type: Erosion Control - (EIP)

Supervisor District(s) 5

All Figures in Thousands

Revenue Source	Prior FY*	FY 23/24	FY 24/25	FY 25/26	FY 26/27	FY 27/28	FY 28/29-32/33	FY 33/34-42/43	Total
United States Forest Service (USFS)			264	136					400
Tahoe Regional Planning Agency/Stream Environmental Zone				39					39
To Be Determined				175	2,525				2,700
Totals			264	350	2,525				3,139

All Figures in Thousands

Expenditures	Prior FY*	FY 23/24	FY 24/25	FY 25/26	FY 26/27	FY 27/28	FY 28/29-32/33	FY 33/34-42/43	Total
Png/Env Consultant			84						84
Png/Env DOT Staff			180						180
Design Consultant									
Developer Advanced Design									
Design DOT Staff				350					350
ROW Acquisition									
ROW Utility Relocation									
ROW Consultant									
ROW DOT Staff									
Constr Eng Consultant					25				25
Const Eng Staff					300				300
Construction					2,200				2,200
Developer Built									
Environmental Mitig. Monitor Consult.									
Environmental Mitig. Monitor Staff									
Plant Establishment - Consultant									
Plant Establishment - Staff									
Totals			264	350	2,525				3,139

Schedule	Prior FY*	FY 23/24	FY 24/25	FY 25/26	FY 26/27	FY 27/28	FY 28/29-32/33	FY 33/34-42/43
Planning/Environmental								
Design								
Construction								

*Prior FY includes actual revenue and expenditures through 6/30/2022, plus amounts estimated through 6/30/2023.



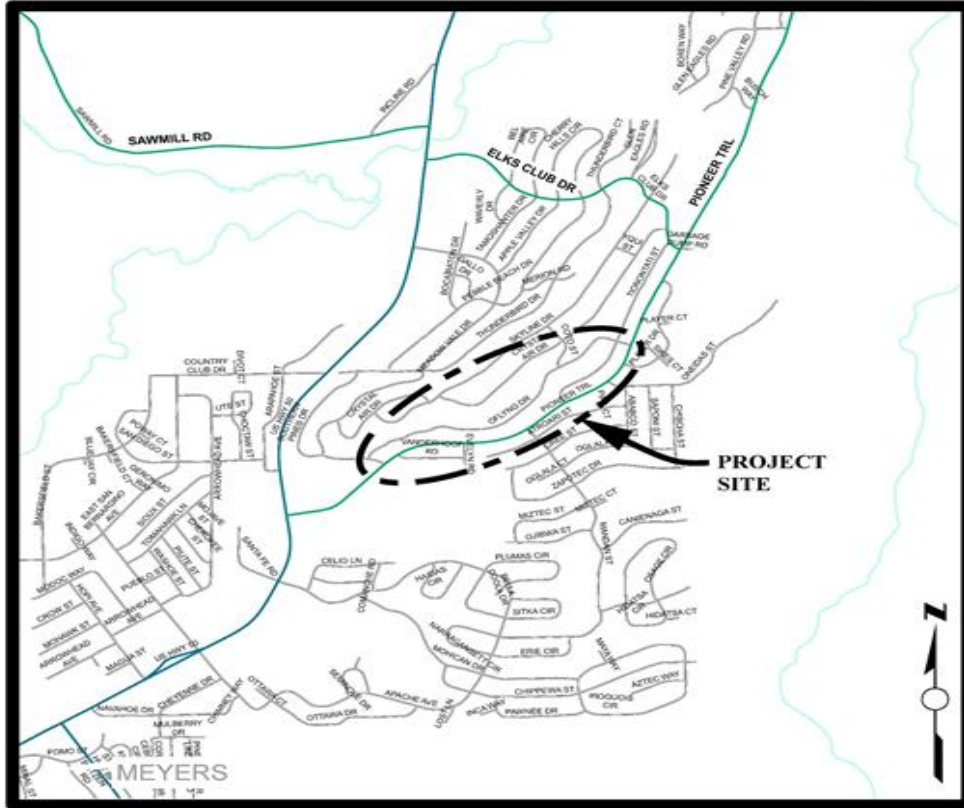
Oflying Water Quality Project

CIP Project Summary

Project No: 36107016

Type: Erosion Control - (EIP)

Supervisor District(s) 5



LOCATION MAP

NOT TO SCALE

Project Description:

The Oflying Water Quality Project is within the Country Club Heights subdivision (Unit 5) and Tahoe Paradise Subdivision (Unit 48), more specifically between Crystal Air Drive at the upper northerly boundary to Pioneer Trail to the south and Southern Pines Drive at the westerly boundary to Elks Club Drive to the east. The project benefits will include increased water quality of urban stormwater and dry weather runoff through infiltration, addressing flood management issues with Low Impact Design principles, and community outreach on stormwater as a resource.

Project Initiation Date: 3/18/2014



Oflying Water Quality Project

Financing Plan & Tentative Schedule

Project No: 36107016

Type: Erosion Control - (EIP)

Supervisor District(s) 5

All Figures in Thousands

Revenue Source	Prior FY*	FY 23/24	FY 24/25	FY 25/26	FY 26/27	FY 27/28	FY 28/29-32/33	FY 33/34-42/43	Total
California Tahoe Conservancy (CTC)									
Tahoe Regional Planning Agency/Water Quality	259	10	10						279
United States Forest Service (USFS)	1,367	233							1,600
State Water Resources Control Board	85								85
Erosion Control Fund									
Totals	1,712	243	10						1,965

All Figures in Thousands

Expenditures	Prior FY*	FY 23/24	FY 24/25	FY 25/26	FY 26/27	FY 27/28	FY 28/29-32/33	FY 33/34-42/43	Total
Plng/Env Consultant	65								65
Plng/Env DOT Staff	41								41
Design Consultant	10								10
Developer Advanced Design									
Design DOT Staff	189								189
ROW Acquisition									
ROW Utility Relocation									
ROW Consultant									
ROW DOT Staff									
Constr Eng Consultant									
Const Eng Staff	120	18							138
Construction	1,260	200							1,460
Developer Built									
Environmental Mitig. Monitor Consult.	5								5
Environmental Mitig. Monitor Staff	5	5	10						20
Plant Establishment - Consultant	10	10							20
Plant Establishment - Staff	7	10							17
Totals	1,712	243	10						1,965

Schedule	Prior FY*	FY 23/24	FY 24/25	FY 25/26	FY 26/27	FY 27/28	FY 28/29-32/33	FY 33/34-42/43
Planning/Environmental								
Design								
Construction								
Environmental Monitoring								

*Prior FY includes actual revenue and expenditures through 6/30/2022, plus amounts estimated through 6/30/2023.



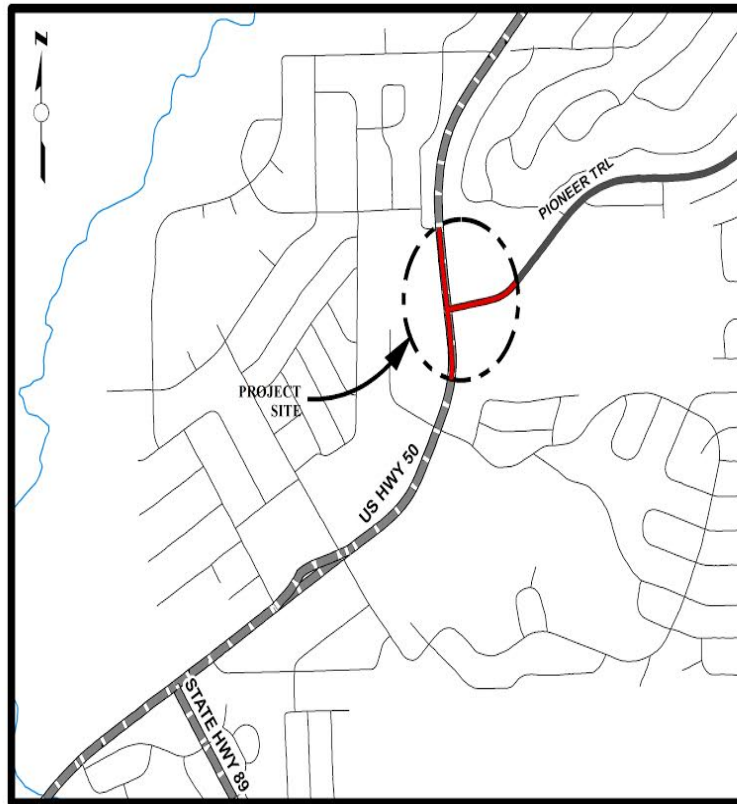
Pioneer Trail/US Highway 50 Intersection Safety Improvement Project

CIP Project Summary

Project No: 36104026

Type: Intersection

Supervisor District(s) 5



LOCATION MAP

NOT TO SCALE

Project Description:

This project will improve the intersection of US 50 and Pioneer Trail in Meyers by replacing the existing signalized intersection with a roundabout. Multiple agencies including El Dorado County, Caltrans Headquarters, Caltrans Maintenance, Caltrans Traffic Operations, CHP, TRPA, FHWA, participated in analyzing the U.S. 50 Meyers Corridor and this intersection for potential safety improvements in 2016. Nearly all of the project is in Caltrans right of way, and when Caltrans procedures are used to determine intersection improvements that will provide the greatest operational and safety benefits, it is likely that a roundabout will be constructed to replace the existing signalized intersection.

Project Initiation Date: 3/28/2017



Pioneer Trail/US Highway 50 Intersection Safety Improvement Project

Financing Plan & Tentative Schedule

Project No: 36104026

Type: Intersection

Supervisor District(s) 5

All Figures in Thousands

Revenue Source	Prior FY*	FY 23/24	FY 24/25	FY 25/26	FY 26/27	FY 27/28	FY 28/29-32/33	FY 33/34-42/43	Total
Highway Safety Improvement Program (HSIP) - Federal		2,586	864						3,450
Tahoe Regional Planning Agency/Mobility Mitigation	104		345						449
Road Fund	1								1
Congestion Mitigation and Air Quality Program (CMAQ)	697		1,485						2,182
RSTP Fed Funds – Caltrans LA	485		2,190						2,675
To Be Determined				18					18
RSTP Exchange Funds-TRPA	15								15
Totals	1,302	2,586	4,885	18					8,791

All Figures in Thousands

Expenditures	Prior FY*	FY 23/24	FY 24/25	FY 25/26	FY 26/27	FY 27/28	FY 28/29-32/33	FY 33/34-42/43	Total
Png/Env Consultant	566								566
Png/Env DOT Staff	157								157
Design Consultant									
Developer Advanced Design									
Design DOT Staff	564								564
ROW Acquisition	5								5
ROW Utility Relocation									
ROW Consultant	10								10
ROW DOT Staff									
Constr Eng Consultant		86							86
Const Eng Staff		390	651						1,041
Construction		2,110	4,215						6,325
Developer Built									
Environmental Mitig. Monitor Consult.			1	1					2
Environmental Mitig. Monitor Staff			6	6					12
Plant Establishment - Consultant			6	6					12
Plant Establishment - Staff			6	6					12
Totals	1,302	2,586	4,885	18					8,791

Schedule	Prior FY*	FY 23/24	FY 24/25	FY 25/26	FY 26/27	FY 27/28	FY 28/29-32/33	FY 33/34-42/43
Planning/Environmental								
Design								
Right Of Way								
Construction								
Environmental Monitoring								

*Prior FY includes actual revenue and expenditures through 6/30/2022, plus amounts estimated through 6/30/2023.



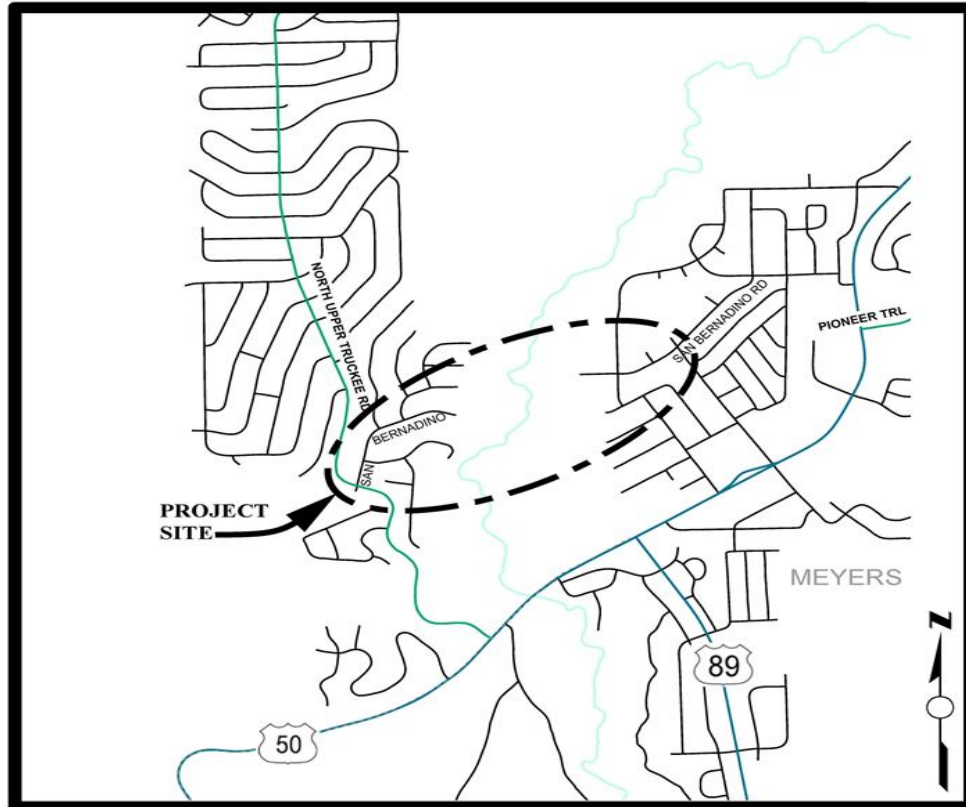
San Bernardino Class I Bike Trail Project

CIP Project Summary

Project No: 36107017

Type: Pedestrian Way/Bike Path

Supervisor District(s) 5



LOCATION MAP

NOT TO SCALE

Project Description:

Construct approximately 0.37 miles of Class 1 bike path from East San Bernardino Avenue, just west of the Upper Truckee River, to Tahoe Paradise Park in the community of Meyers in the Tahoe Basin.

Project Initiation Date: 3/18/2014



San Bernardino Class I Bike Trail Project

Financing Plan & Tentative Schedule

Project No: 36107017

Type: Pedestrian Way/Bike Path

Supervisor District(s) 5

All Figures in Thousands

Revenue Source	Prior FY*	FY 23/24	FY 24/25	FY 25/26	FY 26/27	FY 27/28	FY 28/29-32/33	FY 33/34-42/43	Total
Tahoe Regional Planning Agency/Mobility Mitigation	206		15						221
Tahoe Regional Planning Agency/Water Quality	6								6
Congestion Mitigation and Air Quality Program (CMAQ)	1,002	871							1,873
RSTP Exchange Funds-TRPA									
Highway Infrastructure Program-HIP		273							273
RSTP Fed Funds – Caltrans LA	454	907							1,360
Erosion Control Fund	9								9
Erosion Control Fund - Pending Reimbursement	39								39
Coronavirus Response and Relief - CRRSA		703							703
Totals	1,714	2,753	15						4,483

All Figures in Thousands

Expenditures	Prior FY*	FY 23/24	FY 24/25	FY 25/26	FY 26/27	FY 27/28	FY 28/29-32/33	FY 33/34-42/43	Total
Plng/Env Consultant	186								186
Plng/Env DOT Staff	178								178
Design Consultant	27								27
Developer Advanced Design									
Design DOT Staff	246								246
ROW Acquisition									
ROW Utility Relocation									
ROW Consultant									
ROW DOT Staff									
Constr Eng Consultant	21								21
Const Eng Staff	257	501							758
Construction	800	2,232							3,032
Developer Built									
Environmental Mitig. Monitor Consult.		5	3						8
Environmental Mitig. Monitor Staff		5	5						10
Plant Establishment - Consultant		5	3						8
Plant Establishment - Staff		5	5						10
Totals	1,714	2,753	15						4,483

Schedule	Prior FY*	FY 23/24	FY 24/25	FY 25/26	FY 26/27	FY 27/28	FY 28/29-32/33	FY 33/34-42/43
Planning/Environmental								
Design								
Right Of Way								
Construction								
Environmental Monitoring								

*Prior FY includes actual revenue and expenditures through 6/30/2022, plus amounts estimated through 6/30/2023.



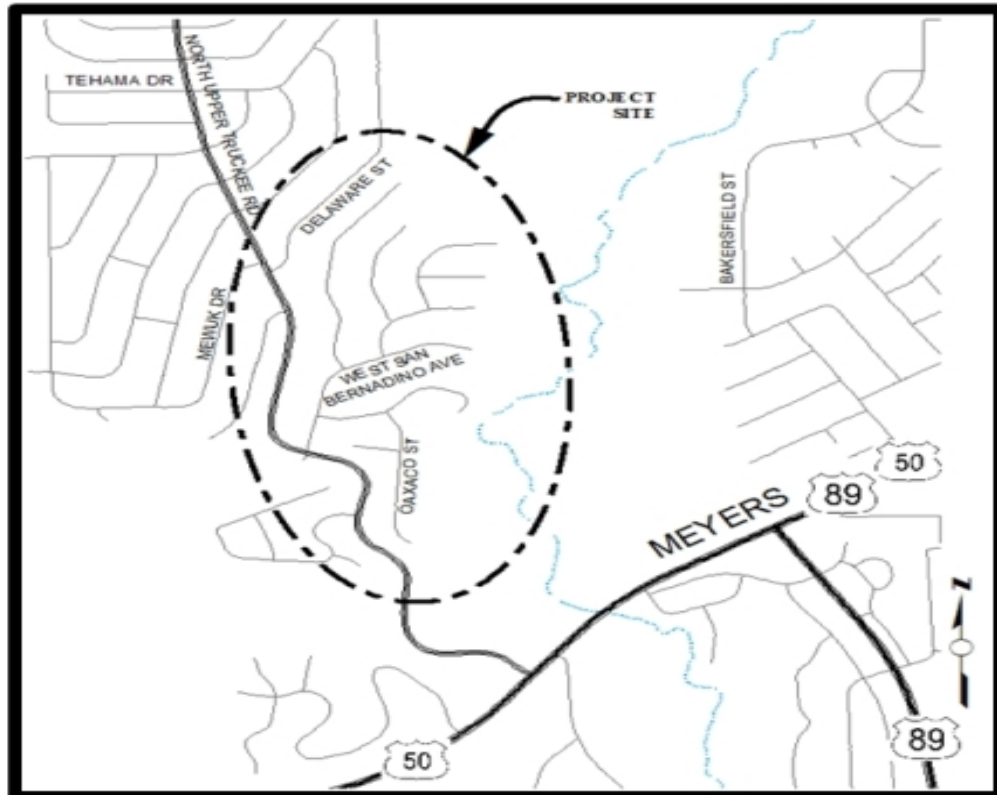
San Bernardino Water Quality Project

CIP Project Summary

Project No: 36107020

Type: Erosion Control - (EIP)

Supervisor District(s) 5



LOCATION MAP

NOT TO SCALE

Project Description:

(Formerly San Bernardino Erosion Control Project) This project will treat eroding cut and fill slopes in County right-of-way. Retain and treat the 25YR-1HR storm. The project also includes revegetation of disturbed areas. It will comply with future Total Maximum Daily Load (TMDL) requirements. Right-of-way acquisitions will be performed if needed.

Project Initiation Date: 3/28/2017



San Bernardino Water Quality Project

Financing Plan & Tentative Schedule

Project No: 36107020

Type: Erosion Control - (EIP)

Supervisor District(s) 5

All Figures in Thousands

Revenue Source	Prior FY*	FY 23/24	FY 24/25	FY 25/26	FY 26/27	FY 27/28	FY 28/29-32/33	FY 33/34-42/43	Total
Tahoe Regional Planning Agency/Water Quality					9		21		29
To Be Determined					135	580	7		722
Erosion Control Fund									
Totals					144	580	28		751

All Figures in Thousands

Expenditures	Prior FY*	FY 23/24	FY 24/25	FY 25/26	FY 26/27	FY 27/28	FY 28/29-32/33	FY 33/34-42/43	Total
Png/Env Consultant					35				35
Png/Env DOT Staff					50				50
Design Consultant									
Developer Advanced Design									
Design DOT Staff					50	100			150
ROW Acquisition									
ROW Utility Relocation									
ROW Consultant									
ROW DOT Staff									
Constr Eng Consultant						3			3
Const Eng Staff					5	70	10		85
Construction						400			400
Developer Built									
Environmental Mitig. Monitor Consult.					1	1	2		4
Environmental Mitig. Monitor Staff					3	3	10		15
Plant Establishment - Consultant						1	1		2
Plant Establishment - Staff						3	5		8
Totals					144	580	28		751

Schedule	Prior FY*	FY 23/24	FY 24/25	FY 25/26	FY 26/27	FY 27/28	FY 28/29-32/33	FY 33/34-42/43
Planning/Environmental								
Design								
Construction								
Environmental Monitoring								

*Prior FY includes actual revenue and expenditures through 6/30/2022, plus amounts estimated through 6/30/2023.



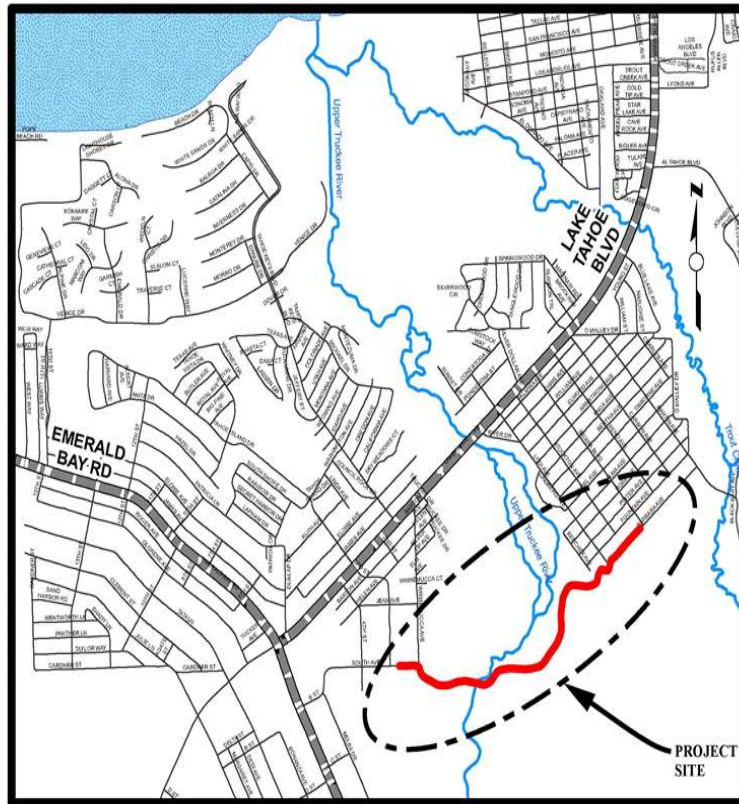
South Tahoe Greenway - Upper Truckee River Bridge at Johnson Meadow

CIP Project Summary

Project No: 36107023

Type: Pedestrian Way/Bike Path

Supervisor District(s) 5



LOCATION MAP

NOT TO SCALE

Project Description:

The South Tahoe Greenway - Upper Truckee Bridge at Johnson Meadow Project will build upon the Dennis T. Machida Memorial Greenway shared use path network through the south shore of Lake Tahoe. The Project aims to construct approximately 1.2 miles of a Class 1 shared use path and replacing a heavily trafficked bridge over the Upper Truckee River damaged by the 2017 winter storms. The Project will provide active transportation users a critical link to Barton Hospital from the west and the Tahoe Sierra neighborhood and the Lake Tahoe Community College to the east.

Project Initiation Date: 2/11/2020



South Tahoe Greenway - Upper Truckee River Bridge at Johnson Meadow

Financing Plan & Tentative Schedule

Project No: 36107023

Type: Pedestrian Way/Bike Path

Supervisor District(s) 5

All Figures in Thousands

Revenue Source	Prior FY*	FY 23/24	FY 24/25	FY 25/26	FY 26/27	FY 27/28	FY 28/29-32/33	FY 33/34-42/43	Total
RSTP Fed Funds – Caltrans LA	454	380							834
Tahoe Regional Planning Agency/Mobility Mitigation	87	13							100
To Be Determined			7,036	20	58				7,114
Totals	541	393	7,036	20	58				8,047

All Figures in Thousands

Expenditures	Prior FY*	FY 23/24	FY 24/25	FY 25/26	FY 26/27	FY 27/28	FY 28/29-32/33	FY 33/34-42/43	Total
Png/Env Consultant	30	210							240
Png/Env DOT Staff	291	75							366
Design Consultant	25								25
Developer Advanced Design									
Design DOT Staff	195	53							248
ROW Acquisition		20							20
ROW Utility Relocation									
ROW Consultant									
ROW DOT Staff		35							35
Constr Eng Consultant			50						50
Const Eng Staff			868						868
Construction			6,118						6,118
Developer Built									
Environmental Mitig. Monitor Consult.									
Environmental Mitig. Monitor Staff				10	50				60
Plant Establishment - Consultant				5	3				8
Plant Establishment - Staff				5	5				10
Totals	541	393	7,036	20	58				8,047

Schedule	Prior FY*	FY 23/24	FY 24/25	FY 25/26	FY 26/27	FY 27/28	FY 28/29-32/33	FY 33/34-42/43
Planning/Environmental								
Design								
Right Of Way								
Construction								
Environmental Monitoring								

*Prior FY includes actual revenue and expenditures through 6/30/2022, plus amounts estimated through 6/30/2023.



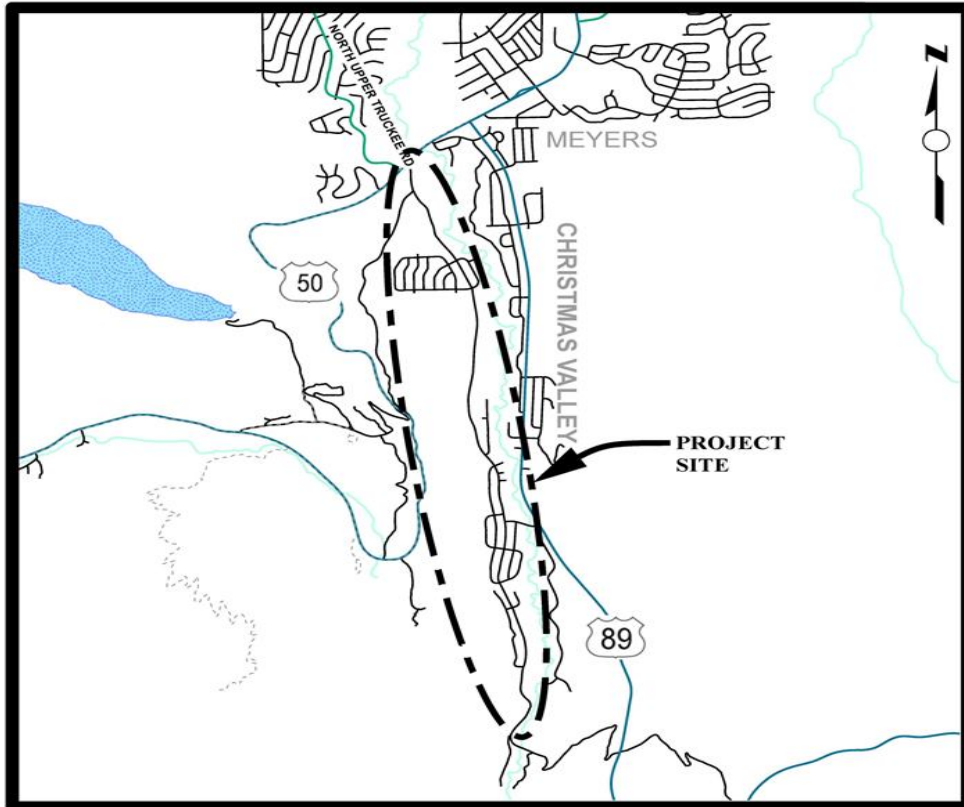
South Upper Truckee Erosion Control Project

CIP Project Summary

Project No: 36107013

Type: Erosion Control - (EIP)

Supervisor District(s) 5



LOCATION MAP

NOT TO SCALE

Project Description:

Treat eroding cut and fill slopes in County right-of-way. Reduce the very fine and fine sediment from the urban watersheds. Revegetation of disturbed areas. Install curb and gutter, rock-lined channels, sediment basins. Restore SEZ. Perform right-of-way acquisitions. This Project will most likely be split into several phases. It is anticipated that other grant funding will be available in the future through EIP grant funding programs available to the County.

Project Initiation Date: 12/6/2010



South Upper Truckee Erosion Control Project

Financing Plan & Tentative Schedule

Project No: 36107013

Type: Erosion Control - (EIP)

Supervisor District(s) 5

All Figures in Thousands

Revenue Source	Prior FY*	FY 23/24	FY 24/25	FY 25/26	FY 26/27	FY 27/28	FY 28/29-32/33	FY 33/34-42/43	Total
Tahoe Regional Planning Agency/Stream Environmental Zone	65		12						77
Tahoe Regional Planning Agency/Water Quality	39		1						40
Erosion Control Fund	-1								-1
United States Forest Service (USFS)	39		285						324
Totals	320	375	298						993

All Figures in Thousands

Expenditures	Prior FY*	FY 23/24	FY 24/25	FY 25/26	FY 26/27	FY 27/28	FY 28/29-32/33	FY 33/34-42/43	Total
Plng/Env Consultant		300							300
Plng/Env DOT Staff	186								186
Design Consultant									
Developer Advanced Design									
Design DOT Staff	20	75							95
ROW Acquisition									
ROW Utility Relocation									
ROW Consultant									
ROW DOT Staff									
Constr Eng Consultant	46								46
Const Eng Staff	39		75						114
Construction	16		200						216
Developer Built									
Environmental Mitig. Monitor Consult.	1		1						2
Environmental Mitig. Monitor Staff	3		10						13
Plant Establishment - Consultant			2						2
Plant Establishment - Staff	7		10						17
Totals	320	375	298						993

Schedule	Prior FY*	FY 23/24	FY 24/25	FY 25/26	FY 26/27	FY 27/28	FY 28/29-32/33	FY 33/34-42/43
Planning/Environmental								
Design								
Right Of Way								
Construction								
Environmental Monitoring								

*Prior FY includes actual revenue and expenditures through 6/30/2022, plus amounts estimated through 6/30/2023.