

**Section 4.2**  
**Tahoe EIP**  
**Individual Project Summaries**



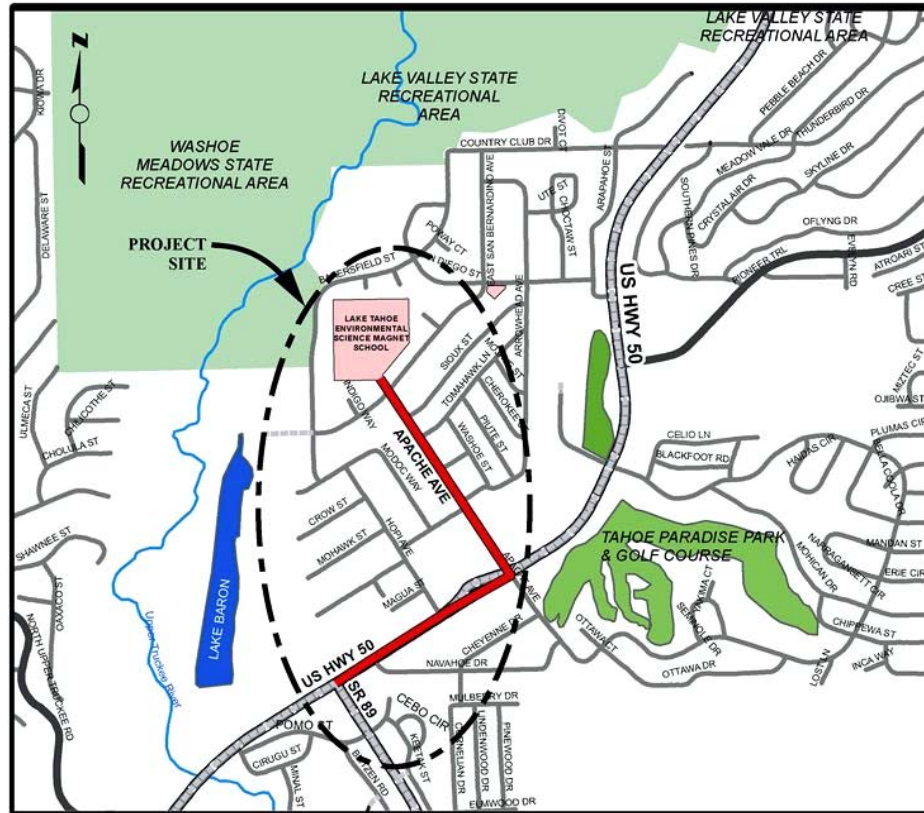
# Apache Avenue Pedestrian Safety and Connectivity Project

## CIP Project Summary

Project No: 95199 / 36107021

Type: Pedestrian Way/Bike Path

Supervisor District(s) 5



### LOCATION MAP

NOT TO SCALE

#### Project Description:

Along Apache Avenue from the US 50/ SR 89 intersection to the Lake Tahoe Environmental Science Magnet School, implement sustainable mobility improvements to provide a safe walkable and bikeable roadway. The project will help support the Walk to School Day, Bike to School Day, and other activities in cooperation with the school district and the Meyers community. Apache Avenue is a major collector and provides challenges faced by the community walking and bicycling to the school and the nearby Tahoe Paradise Park.

Expenditures thru 6/30/2017: \$0

Project Initiation Date: 03/06/18



# Apache Avenue Pedestrian Safety and Connectivity Project

## Financing Plan & Tentative Schedule

Project No: 95199 / 36107021

Type: Pedestrian Way/Bike Path

Supervisor District(s) 5

*All Figures in Thousands*

Revenue by Funding Source	Prior FY*	FY 18/19	FY 19/20	FY 20/21	FY 21/22	FY 22/23	FY 23/24-27/28**	FY 28/29-37/38**	Total
Congestion Mitigation and Air Quality Program	\$0	\$0	\$0	\$0	\$565	\$0	\$0	\$0	\$565
RSTP Exchange Funds-TRPA	\$0	\$0	\$0	\$443	\$0	\$552	\$0	\$0	\$995
Tahoe Regional Planning Agency/Air Quality	\$0	\$0	\$0	\$57	\$0	\$0	\$0	\$0	\$57
<b>Total</b>	\$0	\$0	\$0	\$500	\$565	\$552	\$0	\$0	\$1,617

*All Figures in Thousands*

Expenditures	Prior FY*	FY 18/19	FY 19/20	FY 20/21	FY 21/22	FY 22/23	FY 23/24-27/28**	FY 28/29-37/38**	Total
Planning/Env - Consultant	\$0	\$0	\$0	\$100	\$0	\$0	\$0	\$0	\$100
Planning/Env - Staff	\$0	\$0	\$0	\$50	\$0	\$0	\$0	\$0	\$50
Design - Consultant	\$0	\$0	\$0	\$50	\$0	\$0	\$0	\$0	\$50
Design - Staff	\$0	\$0	\$0	\$300	\$0	\$0	\$0	\$0	\$300
Construction Mgmt - Consultant	\$0	\$0	\$0	\$0	\$15	\$12	\$0	\$0	\$27
Construction Mgmt - Staff	\$0	\$0	\$0	\$0	\$50	\$40	\$0	\$0	\$90
Direct Construction Costs	\$0	\$0	\$0	\$0	\$500	\$500	\$0	\$0	\$1,000
<b>Total</b>	\$0	\$0	\$0	\$500	\$565	\$552	\$0	\$0	\$1,617

Project Schedule	Prior FY*	FY 18/19	FY 19/20	FY 20/21	FY 21/22	FY 22/23	FY 23/24-27/28**	FY 28/29-37/38**
Planning/Environmental								
Design								
Right Of Way								
Construction								
Environmental Monitoring								

\*Prior FY includes actual revenue and expenditures through 06/30/17, plus amounts estimated through 6/30/18.

\*\*FY 23/24 - 27/28 and FY 28/29 - 37/38 revenue and expenditures are not included for the Tahoe EIP, as it is a five-year program.



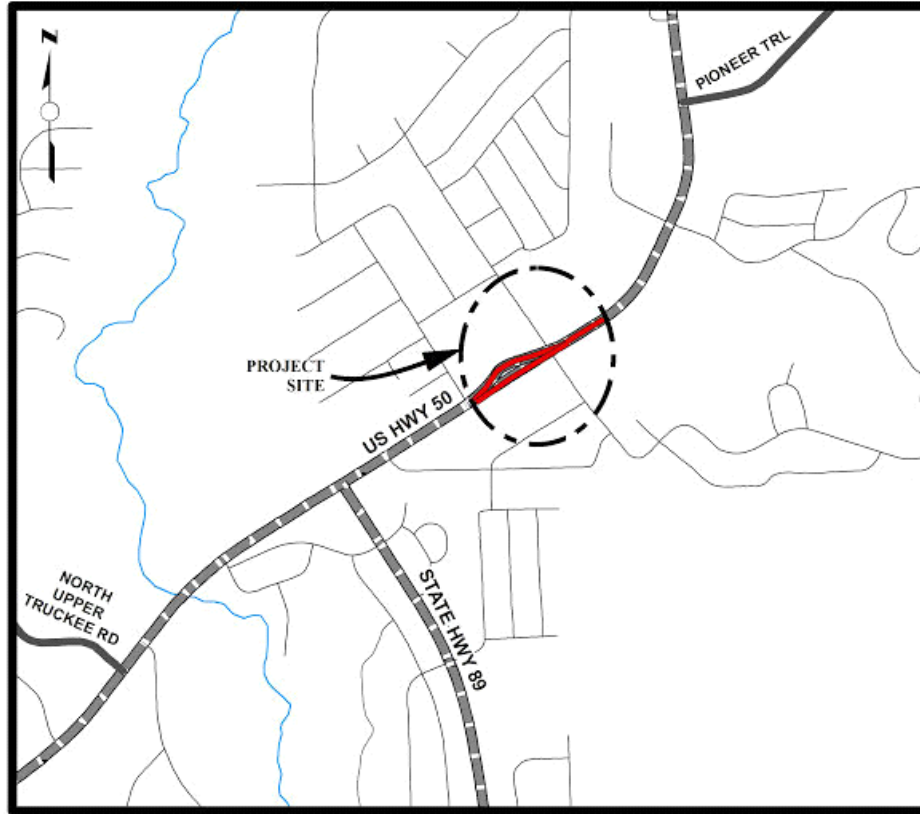
# Apache Avenue/US Highway 50 Intersection Improvement Project

## CIP Project Summary

Project No: 72380 / 36104016

Type: Intersection

Supervisor District(s) 5



### LOCATION MAP

NOT TO SCALE

#### **Project Description:**

The current intersection at Apache Avenue/US Highway 50 is not consistent with best practices for a pedestrian/school crossing on a high speed roadway. Currently, there exists a midblock school crossing approximately 150 feet southwest of the Apache Ave. intersection. The proposed project aims to implement sustainable mobility improvements to provide a safe walkable and bikeable roadway. The project will help support the Walk to School Day, Bike to School Day, and other activities in cooperation with the school district and the Meyers community.

Expenditures thru 6/30/2017: \$0

Project Initiation Date: 03/28/17



# Apache Avenue/US Highway 50 Intersection Improvement Project

## Financing Plan & Tentative Schedule

Project No: 72380 / 36104016

Type: Intersection

Supervisor District(s) 5

**All Figures in Thousands**

Revenue	by Funding Source	Prior FY*	FY 18/19	FY 19/20	FY 20/21	FY 21/22	FY 22/23	FY 23/24- 27/28**	FY 28/29- 37/38**	Total
RSTP Exchange Funds-TRPA		\$0	\$0	\$0	\$75	\$0	\$0	\$0	\$0	\$75
Safe Routes to School - Federal		\$0	\$0	\$60	\$300	\$0	\$0	\$0	\$0	\$360
Tahoe Regional Planning Agency/Air Quality		\$0	\$0	\$0	\$75	\$0	\$0	\$0	\$0	\$75
<b>Total</b>		\$0	\$0	\$60	\$450	\$0	\$0	\$0	\$0	\$510

**All Figures in Thousands**

Expenditures	Prior FY*	FY 18/19	FY 19/20	FY 20/21	FY 21/22	FY 22/23	FY 23/24- 27/28**	FY 28/29- 37/38**	Total
Planning/Env - Consultant	\$0	\$0	\$40	\$0	\$0	\$0	\$0	\$0	\$40
Planning/Env - Staff	\$0	\$0	\$20	\$0	\$0	\$0	\$0	\$0	\$20
Design - Consultant	\$0	\$0	\$0	\$75	\$0	\$0	\$0	\$0	\$75
Design - Staff	\$0	\$0	\$0	\$25	\$0	\$0	\$0	\$0	\$25
Direct Construction Costs	\$0	\$0	\$0	\$350	\$0	\$0	\$0	\$0	\$350
<b>Total</b>		\$0	\$0	\$60	\$450	\$0	\$0	\$0	\$510

Project Schedule	Prior FY*	FY 18/19	FY 19/20	FY 20/21	FY 21/22	FY 22/23	FY 23/24- 27/28**	FY 28/29- 37/38**
Planning/Environmental								
Design								
Right Of Way								
Construction								
Environmental Monitoring								

\*Prior FY includes actual revenue and expenditures through 06/30/17, plus amounts estimated through 6/30/18.

\*\*FY 23/24 - 27/28 and FY 28/29 - 37/38 revenue and expenditures are not included for the Tahoe EIP, as it is a five-year program.



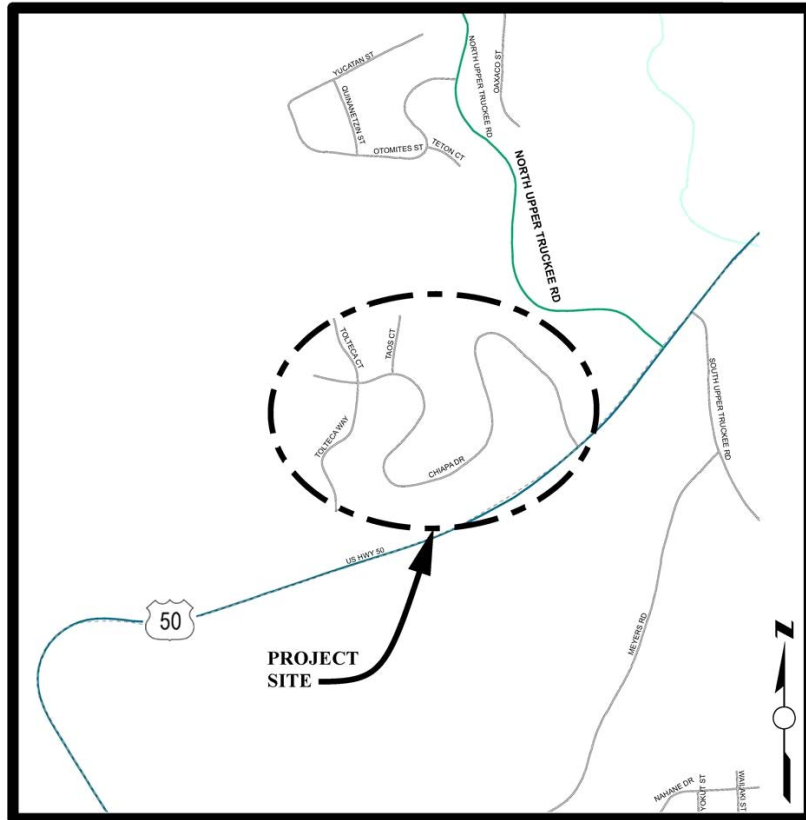
# Chiapa Erosion Control Project

## CIP Project Summary

Project No: 95174 / 36107011

Type: Erosion Control - (EIP)

Supervisor District(s) 5



## LOCATION MAP

NOT TO SCALE

### Project Description:

The Chiapa Erosion Control Project encompasses the streets of Chiapa Drive, Tolteca Court and Taos Court. The main goal of the Project is to improve the clarity of Lake Tahoe by reducing the detrimental water quality impacts of Tahoe Paradise Unit No. 34 subdivision on Lake Tahoe clarity. The objective of the Project is the reduction in the transport of fine sediment from the Project area by constructing water quality Best Management Practices (BMPs) prior to reaching the Upper Truckee River to the maximum extent practicable.

Expenditures thru 6/30/2017: \$0

Project Initiation Date: 06/23/09



# Chiapa Erosion Control Project

## Financing Plan & Tentative Schedule

Project No: 95174 / 36107011

Type: Erosion Control - (EIP)

Supervisor District(s) 5

### All Figures in Thousands

Revenue by Funding Source	Prior FY*	FY 18/19	FY 19/20	FY 20/21	FY 21/22	FY 22/23	FY 23/24-27/28**	FY 28/29-37/38**	Total
California Tahoe Conservancy Site Improvement Grant	\$0	\$0	\$66	\$110	\$744	\$0	\$0	\$0	\$920
Tahoe Regional Planning Agency/Water Quality	\$0	\$0	\$0	\$0	\$160	\$0	\$0	\$0	\$160
United States Forest Service Planning Grant	\$0	\$0	\$0	\$0	\$166	\$0	\$0	\$0	\$166
United States Forest Service Site Improvement Grant	\$0	\$0	\$0	\$0	\$838	\$0	\$0	\$0	\$838
<b>Total</b>	<b>\$0</b>	<b>\$0</b>	<b>\$66</b>	<b>\$110</b>	<b>\$1,908</b>	<b>\$0</b>	<b>\$0</b>	<b>\$0</b>	<b>\$2,084</b>

### All Figures in Thousands

Expenditures	Prior FY*	FY 18/19	FY 19/20	FY 20/21	FY 21/22	FY 22/23	FY 23/24-27/28**	FY 28/29-37/38**	Total
Planning/Env - Staff	\$0	\$0	\$66	\$0	\$0	\$0	\$0	\$0	\$66
Design - Consultant	\$0	\$0	\$0	\$10	\$25	\$0	\$0	\$0	\$35
Design - Staff	\$0	\$0	\$0	\$100	\$235	\$0	\$0	\$0	\$335
Right of Way - Acquisition	\$0	\$0	\$0	\$0	\$13	\$0	\$0	\$0	\$13
Right of Way - Consultant	\$0	\$0	\$0	\$0	\$6	\$0	\$0	\$0	\$6
Right of Way - Staff	\$0	\$0	\$0	\$0	\$18	\$0	\$0	\$0	\$18
Construction Mgmt - Staff	\$0	\$0	\$0	\$0	\$262	\$0	\$0	\$0	\$262
Direct Construction Costs	\$0	\$0	\$0	\$0	\$1,255	\$0	\$0	\$0	\$1,255
Plant Establishment - Consultant	\$0	\$0	\$0	\$0	\$12	\$0	\$0	\$0	\$12
Plant Establishment - Staff	\$0	\$0	\$0	\$0	\$82	\$0	\$0	\$0	\$82
<b>Total</b>	<b>\$0</b>	<b>\$0</b>	<b>\$66</b>	<b>\$110</b>	<b>\$1,908</b>	<b>\$0</b>	<b>\$0</b>	<b>\$0</b>	<b>\$2,084</b>

Project Schedule	Prior FY*	FY 18/19	FY 19/20	FY 20/21	FY 21/22	FY 22/23	FY 23/24-27/28**	FY 28/29-37/38**
Planning/Environmental								
Design								
Right Of Way								
Construction								
Environmental Monitoring								

\*Prior FY includes actual revenue and expenditures through 06/30/17, plus amounts estimated through 6/30/18.

\*\*FY 23/24 - 27/28 and FY 28/29 - 37/38 revenue and expenditures are not included for the Tahoe EIP, as it is a five-year program.





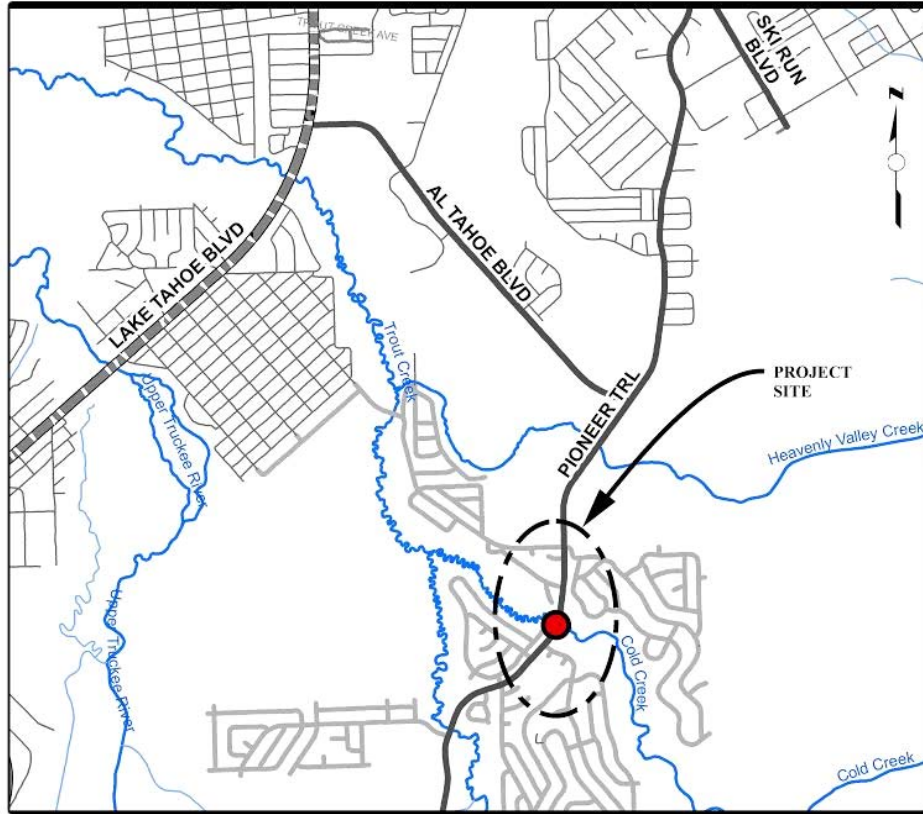
# Cold Creek Fisheries Enhancement Project

## CIP Project Summary

Project No: 95187 / 36107018

Type: Erosion Control - (EIP)

Supervisor District(s) 5



### LOCATION MAP

NOT TO SCALE

#### Project Description:

The original Project scope was to complete a comprehensive stream corridor restoration effort which included a 1 mile reach of Cold Creek, the STPUD access road, the culvert at Pioneer Trail, and the CSLT Globin Ponds. An existing Conditions Analysis Report was completed in May of 2006 which described the majority of the problems within this corridor and opportunities and constraints for the Project alternatives. Upon TAC review of the Report and further discussions with respect to the scope of work it was decided to reduce the scope of work for the County Project to just the culvert at Pioneer Trail. Therefore, the current Project includes addressing the culvert at Pioneer Trail with respect to fish passage only. The goals of this Project are to enhance/improve fisheries and riparian habitat along a portion of Cold Creek, reduce sediment load from adjacent road and reduce sediment load from adjacent slopes.

Expenditures thru 6/30/2017: \$274,917

Project Initiation Date: TBD





# Cold Creek Fisheries Enhancement Project

## Financing Plan & Tentative Schedule

Project No: 95187 / 36107018

Type: Erosion Control - (EIP)

Supervisor District(s) 5

### All Figures in Thousands

Revenue by Funding Source	Prior FY*	FY 18/19	FY 19/20	FY 20/21	FY 21/22	FY 22/23	FY 23/24-27/28**	FY 28/29-37/38**	Total
California Department of Fish & Wildlife	\$0	\$0	\$0	\$350	\$1,100	\$20	\$0	\$0	\$1,470
California Tahoe Conservancy Planning Grant	\$275	\$0	\$0	\$0	\$0	\$0	\$0	\$0	\$275
Tahoe Regional Planning Agency/Stream Environmental Zone	\$0	\$0	\$0	\$0	\$100	\$0	\$0	\$0	\$100
<b>Total</b>	<b>\$275</b>	<b>\$0</b>	<b>\$0</b>	<b>\$350</b>	<b>\$1,200</b>	<b>\$20</b>	<b>\$0</b>	<b>\$0</b>	<b>\$1,845</b>

### All Figures in Thousands

Expenditures	Prior FY*	FY 18/19	FY 19/20	FY 20/21	FY 21/22	FY 22/23	FY 23/24-27/28**	FY 28/29-37/38**	Total
Planning/Env - Consultant	\$0	\$0	\$0	\$70	\$0	\$0	\$0	\$0	\$70
Planning/Env - Staff	\$0	\$0	\$0	\$75	\$0	\$0	\$0	\$0	\$75
Design - Consultant	\$198	\$0	\$0	\$45	\$0	\$0	\$0	\$0	\$243
Design - Staff	\$51	\$0	\$0	\$100	\$0	\$0	\$0	\$0	\$151
Right of Way - Consultant	\$0	\$0	\$0	\$10	\$0	\$0	\$0	\$0	\$10
Right of Way - Staff	\$0	\$0	\$0	\$50	\$0	\$0	\$0	\$0	\$50
Construction Mgmt - Consultant	\$0	\$0	\$0	\$0	\$25	\$0	\$0	\$0	\$25
Construction Mgmt - Staff	\$0	\$0	\$0	\$0	\$125	\$0	\$0	\$0	\$125
Direct Construction Costs	\$0	\$0	\$0	\$0	\$1,000	\$0	\$0	\$0	\$1,000
Env Monitoring - Consultant	\$18	\$0	\$0	\$0	\$0	\$0	\$0	\$0	\$18
Env Monitoring - Staff	\$8	\$0	\$0	\$0	\$25	\$10	\$0	\$0	\$43
Plant Establishment - Staff	\$0	\$0	\$0	\$0	\$25	\$10	\$0	\$0	\$35
<b>Total</b>	<b>\$275</b>	<b>\$0</b>	<b>\$0</b>	<b>\$350</b>	<b>\$1,200</b>	<b>\$20</b>	<b>\$0</b>	<b>\$0</b>	<b>\$1,845</b>

Project Schedule	Prior FY*	FY 18/19	FY 19/20	FY 20/21	FY 21/22	FY 22/23	FY 23/24-27/28**	FY 28/29-37/38**
Planning/Environmental								
Design								
Right Of Way								
Construction								
Environmental Monitoring								

\*Prior FY includes actual revenue and expenditures through 06/30/17, plus amounts estimated through 6/30/18.

\*\*FY 23/24 - 27/28 and FY 28/29 - 37/38 revenue and expenditures are not included for the Tahoe EIP, as it is a five-year program.



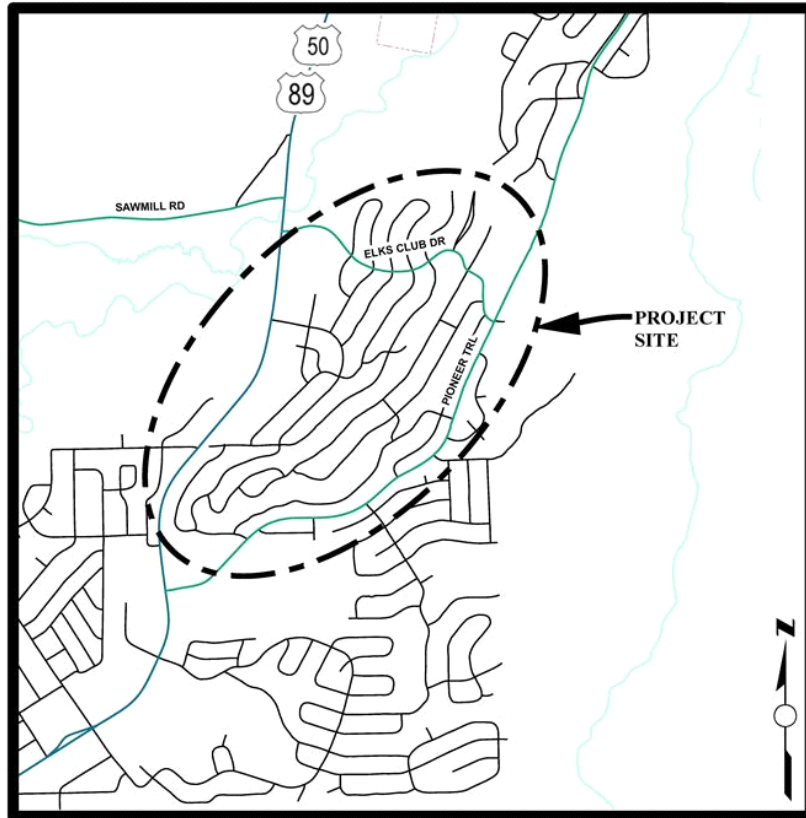
# Country Club Heights Erosion Control Project

## CIP Project Summary

Project No: 95191 / 36107009

Type: Erosion Control - (EIP)

Supervisor District(s) 5



### LOCATION MAP

NOT TO SCALE

#### **Project Description:**

The Country Club Heights Erosion Control Project is within the Country Club Heights subdivision (Units 1-5), more specifically between Crystal Air Drive at the upper southerly boundary to U.S. Highway 50 to the north and Thunderbird Drive at the upper westerly boundary to the Upper Truckee River to the west. The main goal of this Project is to reduce very fine/fine sediment from the County right-of-way from reaching the Upper Truckee River near Elks Club Road to the Total Maximum Daily Level (TMDL) set by Lahontan Regional Water Quality Control Board under the National Pollution Discharge Elimination System (NPDES) permit conditions.

Expenditures thru 6/30/2017: \$316,473

Project Initiation Date: 07/01/11



# Country Club Heights Erosion Control Project

## Financing Plan & Tentative Schedule

Project No: 95191 / 36107009

Type: Erosion Control - (EIP)

Supervisor District(s) 5

### All Figures in Thousands

Revenue by Funding Source	Prior FY*	FY 18/19	FY 19/20	FY 20/21	FY 21/22	FY 22/23	FY 23/24-27/28**	FY 28/29-37/38**	Total
California Tahoe Conservancy Planning Grant	\$75	\$98	\$77	\$0	\$0	\$0	\$0	\$0	\$250
California Tahoe Conservancy Site Improvement Grant	\$50	\$200	\$0	\$0	\$0	\$0	\$0	\$0	\$250
Tahoe Regional Planning Agency/Water Quality	\$55	\$0	\$15	\$16	\$0	\$0	\$0	\$0	\$86
United States Forest Service Planning Grant	\$182	\$0	\$0	\$0	\$0	\$0	\$0	\$0	\$182
United States Forest Service Site Improvement Grant	\$545	\$509	\$0	\$0	\$0	\$0	\$0	\$0	\$1,054
<b>Total</b>	<b>\$907</b>	<b>\$807</b>	<b>\$92</b>	<b>\$16</b>	<b>\$0</b>	<b>\$0</b>	<b>\$0</b>	<b>\$0</b>	<b>\$1,822</b>

### All Figures in Thousands

Expenditures	Prior FY*	FY 18/19	FY 19/20	FY 20/21	FY 21/22	FY 22/23	FY 23/24-27/28**	FY 28/29-37/38**	Total
Planning/Env - Consultant	\$107	\$100	\$25	\$0	\$0	\$0	\$0	\$0	\$232
Planning/Env - Staff	\$150	\$0	\$0	\$0	\$0	\$0	\$0	\$0	\$150
Survey - Staff	\$0	\$0	\$0	\$0	\$0	\$0	\$0	\$0	\$0
Design - Consultant	\$0	\$25	\$0	\$0	\$0	\$0	\$0	\$0	\$25
Design - Staff	\$187	\$0	\$47	\$0	\$0	\$0	\$0	\$0	\$234
Right of Way - Acquisition	\$0	\$25	\$0	\$0	\$0	\$0	\$0	\$0	\$25
Right of Way - Consultant	\$0	\$0	\$0	\$0	\$0	\$0	\$0	\$0	\$0
Right of Way - Staff	\$2	\$0	\$0	\$0	\$0	\$0	\$0	\$0	\$2
Construction Mgmt - Consultant	\$5	\$5	\$0	\$0	\$0	\$0	\$0	\$0	\$10
Construction Mgmt - Staff	\$42	\$107	\$0	\$0	\$0	\$0	\$0	\$0	\$149
Direct Construction Costs	\$400	\$502	\$0	\$0	\$0	\$0	\$0	\$0	\$902
Env Monitoring - Consultant	\$0	\$3	\$0	\$0	\$0	\$0	\$0	\$0	\$3
Env Monitoring - Staff	\$9	\$5	\$5	\$0	\$0	\$0	\$0	\$0	\$19
Plant Establishment - Consultant	\$5	\$25	\$0	\$0	\$0	\$0	\$0	\$0	\$30
Plant Establishment - Staff	\$0	\$10	\$15	\$16	\$0	\$0	\$0	\$0	\$41
<b>Total</b>	<b>\$907</b>	<b>\$807</b>	<b>\$92</b>	<b>\$16</b>	<b>\$0</b>	<b>\$0</b>	<b>\$0</b>	<b>\$0</b>	<b>\$1,822</b>

Project Schedule	Prior FY*	FY 18/19	FY 19/20	FY 20/21	FY 21/22	FY 22/23	FY 23/24-27/28**	FY 28/29-37/38**
Planning/Environmental								
Design								
Right Of Way								
Construction								
Environmental Monitoring								

\*Prior FY includes actual revenue and expenditures through 06/30/17, plus amounts estimated through 6/30/18.

\*\*FY 23/24 - 27/28 and FY 28/29 - 37/38 revenue and expenditures are not included for the Tahoe EIP, as it is a five-year program.



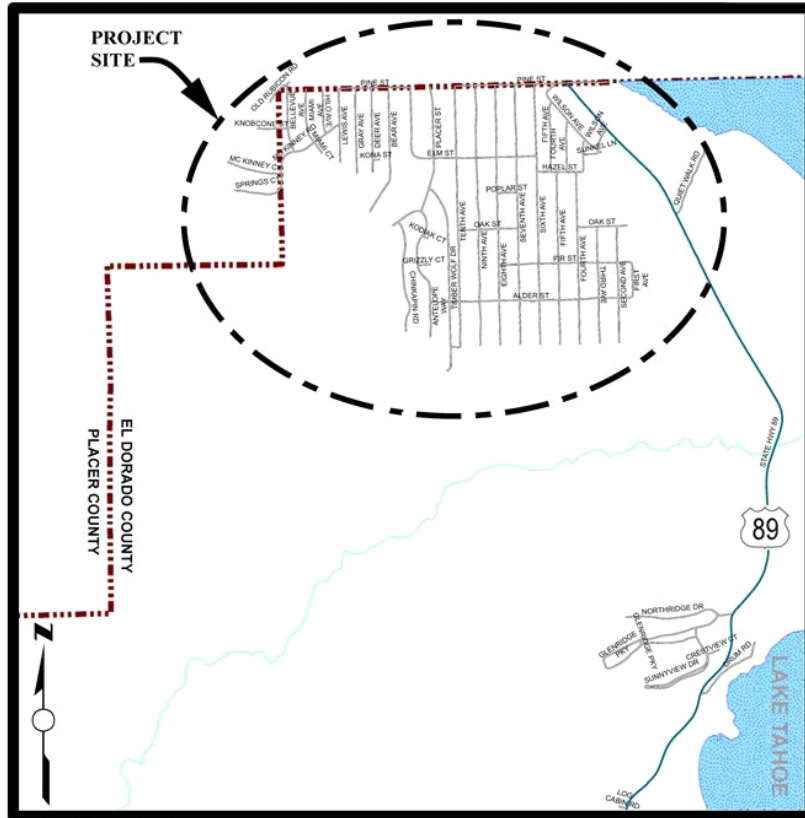
# CSA #5 Erosion Control Project

## CIP Project Summary

Project No: 95157 / 36107003

Type: Erosion Control - (EIP)

Supervisor District(s) 5



### LOCATION MAP

NOT TO SCALE

#### **Project Description:**

The Project area is located in Tahoma on the west shore of Lake Tahoe, and is bounded by Lake Tahoe and First Avenue to the east, the El Dorado/Placer County line to the north, Chinkapin Road and Placer Street to the west and Cedar Street to the South. The Project area is identified in the Tahoe Regional Planning Agency's (TRPA) Environmental Improvement Project (EIP) list as project number 01.01.01.0067 (formerly No. 10062) and is located within TRPA designated Priority 2 Watershed 56 (General Creek).

The current Project will address areas of interest that were not addressed by the CSA #5 Upper Area Erosion Control Project (CIP No. 95196). It is anticipated that all of the proposed improvements for this Project will be modifications to existing infrastructure within the County rights-of-way.

Expenditures thru 6/30/2017: \$977,194

Project Initiation Date: 10/26/98



# CSA #5 Erosion Control Project

## Financing Plan & Tentative Schedule

Project No: 95157 / 36107003

Type: Erosion Control - (EIP)

Supervisor District(s) 5

**All Figures in Thousands**

Revenue by Funding Source	Prior FY*	FY 18/19	FY 19/20	FY 20/21	FY 21/22	FY 22/23	FY 23/24-27/28**	FY 28/29-37/38**	Total
County Service Area (CSA 5)	\$200	\$0	\$0	\$0	\$0	\$0	\$0	\$0	\$200
South Tahoe Public Utility District	\$10	\$65	\$0	\$0	\$0	\$0	\$0	\$0	\$75
Tahoe Regional Planning Agency/Water Quality	\$65	\$0	\$19	\$0	\$0	\$0	\$0	\$0	\$84
United States Forest Service Planning Grant	\$306	\$0	\$0	\$0	\$0	\$0	\$0	\$0	\$306
United States Forest Service Site Improvement Grant	\$450	\$81	\$319	\$0	\$0	\$0	\$0	\$0	\$850
<b>Total</b>	<b>\$1,030</b>	<b>\$146</b>	<b>\$338</b>	<b>\$0</b>	<b>\$0</b>	<b>\$0</b>	<b>\$0</b>	<b>\$0</b>	<b>\$1,513</b>

**All Figures in Thousands**

Expenditures	Prior FY*	FY 18/19	FY 19/20	FY 20/21	FY 21/22	FY 22/23	FY 23/24-27/28**	FY 28/29-37/38**	Total
Planning/Env - Consultant	\$29	\$0	\$0	\$0	\$0	\$0	\$0	\$0	\$29
Planning/Env - Staff	\$129	\$31	\$0	\$0	\$0	\$0	\$0	\$0	\$160
Design - Consultant	\$0	\$0	\$0	\$0	\$0	\$0	\$0	\$0	\$0
Design - Staff	\$208	\$54	\$0	\$0	\$0	\$0	\$0	\$0	\$262
Right of Way - Consultant	\$0	\$0	\$0	\$0	\$0	\$0	\$0	\$0	\$0
Right of Way - Staff	\$0	\$0	\$0	\$0	\$0	\$0	\$0	\$0	\$0
Construction Mgmt - Consultant	\$5	\$0	\$0	\$0	\$0	\$0	\$0	\$0	\$5
Construction Mgmt - Staff	\$93	\$11	\$69	\$0	\$0	\$0	\$0	\$0	\$173
Direct Construction Costs	\$527	\$50	\$250	\$0	\$0	\$0	\$0	\$0	\$827
Env Monitoring - Consultant	\$4	\$0	\$1	\$0	\$0	\$0	\$0	\$0	\$5
Env Monitoring - Staff	\$20	\$0	\$8	\$0	\$0	\$0	\$0	\$0	\$28
Plant Establishment - Consultant	\$4	\$0	\$5	\$0	\$0	\$0	\$0	\$0	\$9
Plant Establishment - Staff	\$11	\$0	\$5	\$0	\$0	\$0	\$0	\$0	\$16
<b>Total</b>	<b>\$1,030</b>	<b>\$146</b>	<b>\$338</b>	<b>\$0</b>	<b>\$0</b>	<b>\$0</b>	<b>\$0</b>	<b>\$0</b>	<b>\$1,513</b>

Project Schedule	Prior FY*	FY 18/19	FY 19/20	FY 20/21	FY 21/22	FY 22/23	FY 23/24-27/28**	FY 28/29-37/38**	
Planning/Environmental									
Design									
Right Of Way									
Construction									
Environmental Monitoring									

\*Prior FY includes actual revenue and expenditures through 06/30/17, plus amounts estimated through 6/30/18.

\*\*FY 23/24 - 27/28 and FY 28/29 - 37/38 revenue and expenditures are not included for the Tahoe EIP, as it is a five-year program.



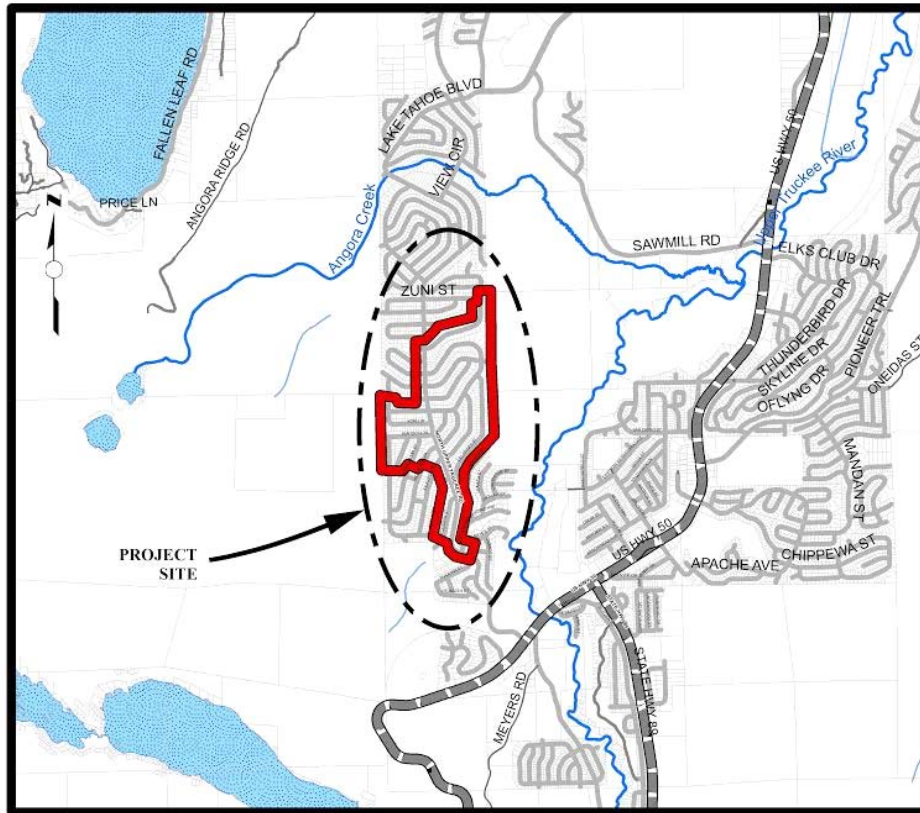
# Delaware Water Quality Project

## CIP Project Summary

Project No: 95197 / 36107019

Type: Erosion Control - (EIP)

Supervisor District(s) 5



### LOCATION MAP

NOT TO SCALE

#### **Project Description:**

This Project encompasses the Tahoe Paradise Units No. 20, 22, 23, and 24 subdivisions, which includes Delaware Street, Kiowa Drive, and Kickapoo Street. The primary goal of the Project is to improve the clarity of Lake Tahoe by reducing detrimental water quality impacts that are a result of the development of Tahoe Paradise Units No. 20, 22, 23, and 24. The objective of the Project is the reduction of the transport of fine sediment from the Project area to the Upper Truckee River by construction water quality Best Management Practices.

Expenditures thru 6/30/2017: \$0

Project Initiation Date: 02/09/17





# Delaware Water Quality Project

## Financing Plan & Tentative Schedule

Project No: 95197 / 36107019

Type: Erosion Control - (EIP)

Supervisor District(s) 5

### All Figures in Thousands

Revenue by Funding Source	Prior FY*	FY 18/19	FY 19/20	FY 20/21	FY 21/22	FY 22/23	FY 23/24-27/28**	FY 28/29-37/38**	Total
Tahoe Regional Planning Agency/Air Quality	\$0	\$0	\$9	\$0	\$15	\$6	\$0	\$0	\$29
United States Forest Service Site Improvement Grant	\$0	\$0	\$235	\$480	\$7	\$0	\$0	\$0	\$722
<b>Total</b>	\$0	\$0	\$244	\$480	\$22	\$6	\$0	\$0	\$751

### All Figures in Thousands

Expenditures	Prior FY*	FY 18/19	FY 19/20	FY 20/21	FY 21/22	FY 22/23	FY 23/24-27/28**	FY 28/29-37/38**	Total
Planning/Env - Consultant	\$0	\$0	\$35	\$0	\$0	\$0	\$0	\$0	\$35
Planning/Env - Staff	\$0	\$0	\$50	\$0	\$0	\$0	\$0	\$0	\$50
Design - Staff	\$0	\$0	\$150	\$0	\$0	\$0	\$0	\$0	\$150
Construction Mgmt - Consultant	\$0	\$0	\$0	\$3	\$0	\$0	\$0	\$0	\$3
Construction Mgmt - Staff	\$0	\$0	\$5	\$70	\$10	\$0	\$0	\$0	\$85
Direct Construction Costs	\$0	\$0	\$0	\$400	\$0	\$0	\$0	\$0	\$400
Env Monitoring - Consultant	\$0	\$0	\$1	\$1	\$1	\$1	\$0	\$0	\$4
Env Monitoring - Staff	\$0	\$0	\$3	\$3	\$5	\$5	\$0	\$0	\$15
Plant Establishment - Consultant	\$0	\$0	\$0	\$1	\$1	\$0	\$0	\$0	\$2
Plant Establishment - Staff	\$0	\$0	\$0	\$3	\$5	\$0	\$0	\$0	\$8
<b>Total</b>	\$0	\$0	\$244	\$480	\$22	\$6	\$0	\$0	\$751

Project Schedule	Prior FY*	FY 18/19	FY 19/20	FY 20/21	FY 21/22	FY 22/23	FY 23/24-27/28**	FY 28/29-37/38**
Planning/Environmental								
Design								
Right Of Way								
Construction								
Environmental Monitoring								

\*Prior FY includes actual revenue and expenditures through 06/30/17, plus amounts estimated through 6/30/18.

\*\*FY 23/24 - 27/28 and FY 28/29 - 37/38 revenue and expenditures are not included for the Tahoe EIP, as it is a five-year program.





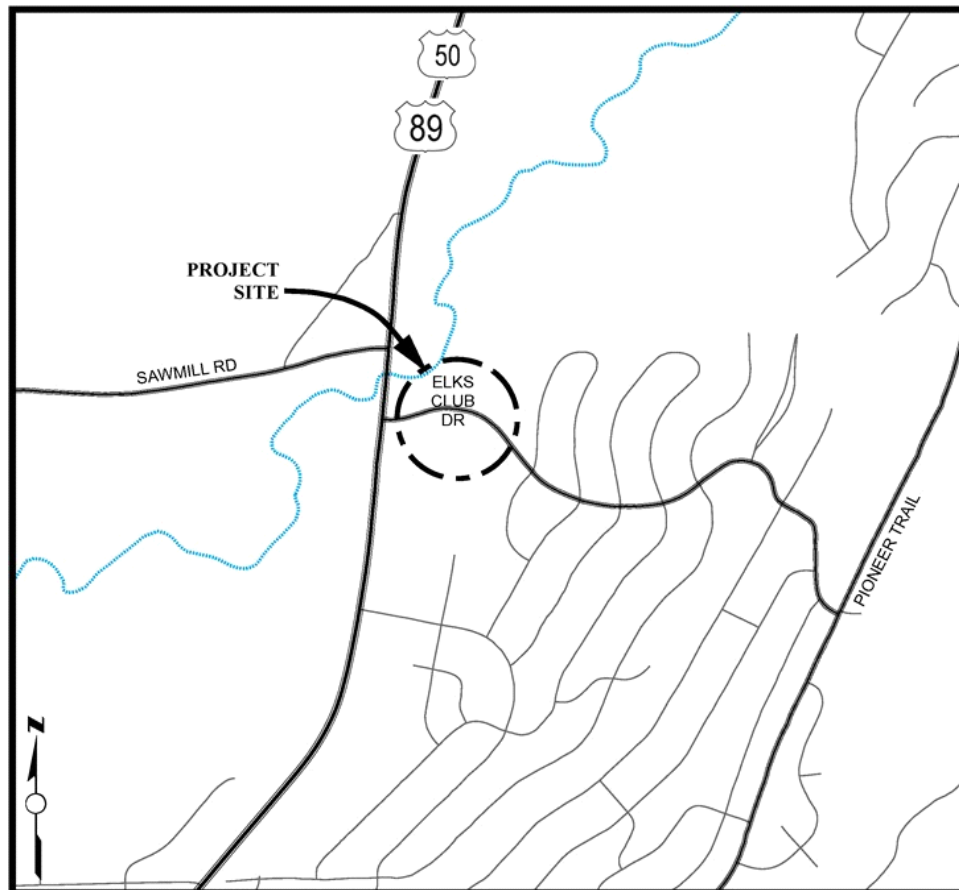
# Elks Club Drive Storm Damage

## CIP Project Summary

Project No: 78725 / 36102020

Type: Emergency

Supervisor District(s) 5



### LOCATION MAP

NOT TO SCALE

#### **Project Description:**

Elks Club Drive between Highway 50 and Boca Raton. Sinkhole in roadway (failed pipe) with over saturated road base. The condition of the roadway has deteriorated due to heavy rains and a collapsed culvert. Permanent repairs include replacement of the existing culvert and reconstruction of the roadway.

Expenditures thru 6/30/2017: \$6,184

Project Initiation Date: 02/08/17



# Elks Club Drive Storm Damage

## Financing Plan & Tentative Schedule

Project No: 78725 / 36102020

Type: Emergency

Supervisor District(s) 5

*All Figures in Thousands*

Revenue by Funding Source	Prior FY*	FY 18/19	FY 19/20	FY 20/21	FY 21/22	FY 22/23	FY 23/24-27/28**	FY 28/29-37/38**	Total
Federal Disaster Funding	\$404	\$417	\$0	\$0	\$0	\$0	\$0	\$0	\$821
Road Fund/Discretionary	\$13	\$14	\$0	\$0	\$0	\$0	\$0	\$0	\$27
State Disaster Relief	\$39	\$41	\$0	\$0	\$0	\$0	\$0	\$0	\$80
<b>Total</b>	<b>\$456</b>	<b>\$471</b>	<b>\$0</b>	<b>\$0</b>	<b>\$0</b>	<b>\$0</b>	<b>\$0</b>	<b>\$0</b>	<b>\$928</b>

*All Figures in Thousands*

Expenditures	Prior FY*	FY 18/19	FY 19/20	FY 20/21	FY 21/22	FY 22/23	FY 23/24-27/28**	FY 28/29-37/38**	Total
Planning/Env - Consultant	\$16	\$0	\$0	\$0	\$0	\$0	\$0	\$0	\$16
Planning/Env - Staff	\$14	\$0	\$0	\$0	\$0	\$0	\$0	\$0	\$14
Design - Staff	\$196	\$0	\$0	\$0	\$0	\$0	\$0	\$0	\$196
Right of Way - Staff	\$0	\$0	\$0	\$0	\$0	\$0	\$0	\$0	\$0
Construction Mgmt - Staff	\$28	\$89	\$0	\$0	\$0	\$0	\$0	\$0	\$117
Direct Construction Costs	\$202	\$382	\$0	\$0	\$0	\$0	\$0	\$0	\$584
<b>Total</b>	<b>\$456</b>	<b>\$471</b>	<b>\$0</b>	<b>\$0</b>	<b>\$0</b>	<b>\$0</b>	<b>\$0</b>	<b>\$0</b>	<b>\$928</b>

Project Schedule	Prior FY*	FY 18/19	FY 19/20	FY 20/21	FY 21/22	FY 22/23	FY 23/24-27/28**	FY 28/29-37/38**
Planning/Environmental								
Design								
Right Of Way								
Construction								
Environmental Monitoring								

\*Prior FY includes actual revenue and expenditures through 06/30/17, plus amounts estimated through 6/30/18.

\*\*FY 23/24 - 27/28 and FY 28/29 - 37/38 revenue and expenditures are not included for the Tahoe EIP, as it is a five-year program.



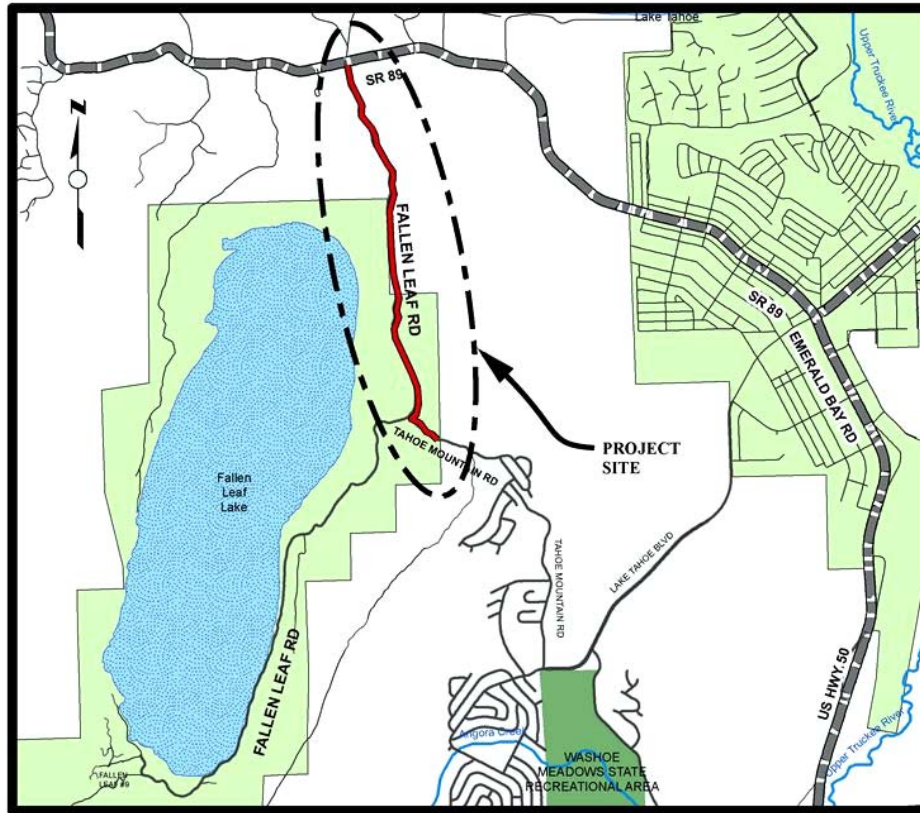
# Fallen Leaf Road Pavement Rehabilitation and Recreational Access Project

## CIP Project Summary

Project No: 72194 / 36105050

Type:

Supervisor District(s) 5



### LOCATION MAP

NOT TO SCALE

#### **Project Description:**

Fallen Leaf Road is 4.94 miles long and extends from SR89 to the southern end of Fallen Leaf Lake at Stanford Sierra Camp. The proposed project is to complete roadway improvements along a 2-mile segment of Fallen Leaf Road from SR89 to Tahoe Mountain Road, including an extension of the bike path from the Fallen Leaf Lake Campground to Tahoe Mountain Road.

Expenditures thru 6/30/2017: \$0

Project Initiation Date: 03/06/18



# Fallen Leaf Road Pavement Rehabilitation and Recreational Access Project

## Financing Plan & Tentative Schedule

Project No: 72194 / 36105050

Type:

Supervisor District(s) 5

**All Figures in Thousands**

Revenue by Funding Source	Prior FY*	FY 18/19	FY 19/20	FY 20/21	FY 21/22	FY 22/23	FY 23/24-27/28**	FY 28/29-37/38**	Total
Federal Lands Access Program (FLAP)	\$0	\$0	\$0	\$355	\$2,394	\$0	\$0	\$0	\$2,749
Road Fund/Discretionary	\$0	\$0	\$0	\$46	\$310	\$0	\$0	\$0	\$356
Tahoe Regional Planning Agency/Air Quality	\$0	\$0	\$10	\$0	\$0	\$0	\$0	\$0	\$10
<b>Total</b>	\$0	\$0	\$10	\$401	\$2,704	\$0	\$0	\$0	\$3,115

**All Figures in Thousands**

Expenditures	Prior FY*	FY 18/19	FY 19/20	FY 20/21	FY 21/22	FY 22/23	FY 23/24-27/28**	FY 28/29-37/38**	Total
Planning - Staff	\$0	\$0	\$0	\$10	\$0	\$0	\$0	\$0	\$10
Planning/Env - Consultant	\$0	\$0	\$10	\$50	\$0	\$0	\$0	\$0	\$60
Design - Consultant	\$0	\$0	\$0	\$296	\$0	\$0	\$0	\$0	\$296
Design - Staff	\$0	\$0	\$0	\$10	\$0	\$0	\$0	\$0	\$10
Right of Way - Consultant	\$0	\$0	\$0	\$30	\$0	\$0	\$0	\$0	\$30
Right of Way - Staff	\$0	\$0	\$0	\$5	\$0	\$0	\$0	\$0	\$5
Construction Mgmt - Consultant	\$0	\$0	\$0	\$0	\$353	\$0	\$0	\$0	\$353
Direct Construction Costs	\$0	\$0	\$0	\$0	\$2,351	\$0	\$0	\$0	\$2,351
<b>Total</b>	\$0	\$0	\$10	\$401	\$2,704	\$0	\$0	\$0	\$3,115

Project Schedule	Prior FY*	FY 18/19	FY 19/20	FY 20/21	FY 21/22	FY 22/23	FY 23/24-27/28**	FY 28/29-37/38**
Planning/Environmental								
Design								
Right Of Way								
Construction								
Environmental Monitoring								

\*Prior FY includes actual revenue and expenditures through 06/30/17, plus amounts estimated through 6/30/18.

\*\*FY 23/24 - 27/28 and FY 28/29 - 37/38 revenue and expenditures are not included for the Tahoe EIP, as it is a five-year program.



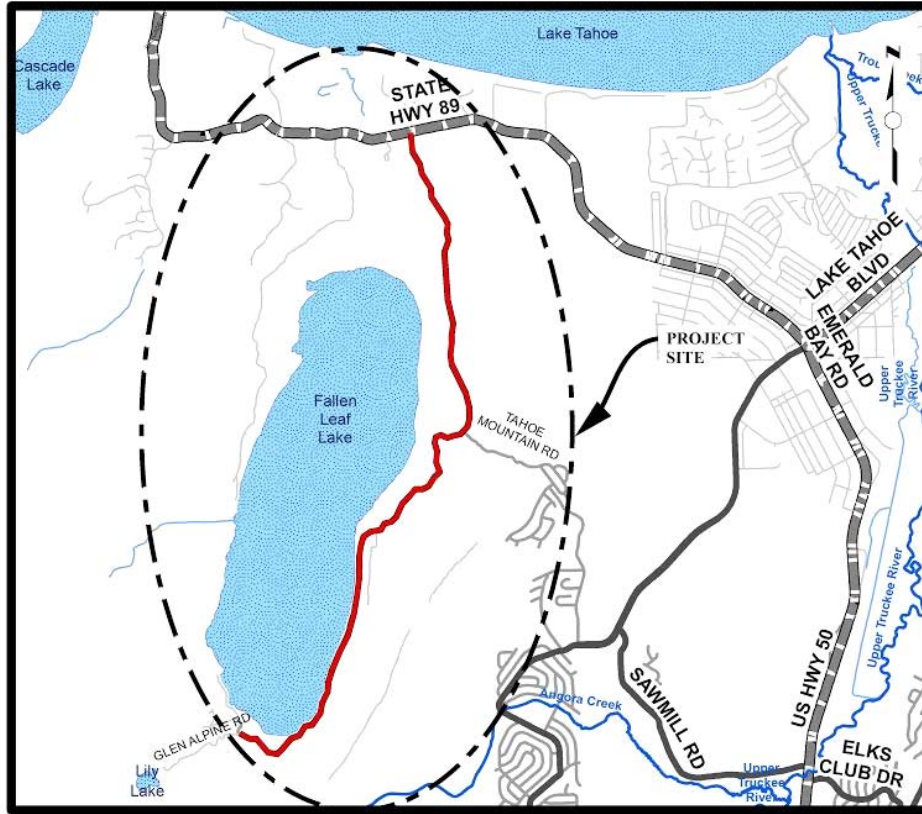
# Fallen Leaf Road/Tahoe Mountain Road Storm Damage

## CIP Project Summary

Project No: 78726 / 36102001

Type: Emergency

Supervisor District(s) 5



### LOCATION MAP

NOT TO SCALE

#### Project Description:

Fallen Leaf Road washout between Marina and Glen Alpine Road. Seasonal stream overtopped bank and washed out road at two locations. Staff is anticipating FEMA and OES reimbursement for this project.

Expenditures thru 6/30/2017: \$33,327

Project Initiation Date: 02/28/17



# Fallen Leaf Road/Tahoe Mountain Road Storm Damage

## Financing Plan & Tentative Schedule

Project No: 78726 / 36102001

Type: Emergency

Supervisor District(s) 5

*All Figures in Thousands*

Revenue by Funding Source	Prior FY*	FY 18/19	FY 19/20	FY 20/21	FY 21/22	FY 22/23	FY 23/24-27/28**	FY 28/29-37/38**	Total
General Fund	\$800	\$0	\$0	\$0	\$0	\$0	\$0	\$0	\$800
Road Maintenance & Rehabilitation (RMRA)	\$0	\$36	\$0	\$0	\$0	\$0	\$0	\$0	\$36
<b>Total</b>	<b>\$800</b>	<b>\$36</b>	<b>\$0</b>	<b>\$0</b>	<b>\$0</b>	<b>\$0</b>	<b>\$0</b>	<b>\$0</b>	<b>\$836</b>

*All Figures in Thousands*

Expenditures	Prior FY*	FY 18/19	FY 19/20	FY 20/21	FY 21/22	FY 22/23	FY 23/24-27/28**	FY 28/29-37/38**	Total
Planning/Env - Consultant	\$20	\$0	\$0	\$0	\$0	\$0	\$0	\$0	\$20
Planning/Env - Staff	\$34	\$0	\$0	\$0	\$0	\$0	\$0	\$0	\$34
Design - Staff	\$52	\$0	\$0	\$0	\$0	\$0	\$0	\$0	\$52
Right of Way - Staff	\$5	\$0	\$0	\$0	\$0	\$0	\$0	\$0	\$5
Construction Mgmt - Consultant	\$40	\$0	\$0	\$0	\$0	\$0	\$0	\$0	\$40
Construction Mgmt - Staff	\$45	\$15	\$0	\$0	\$0	\$0	\$0	\$0	\$60
Direct Construction Costs	\$600	\$17	\$0	\$0	\$0	\$0	\$0	\$0	\$617
Env Monitoring - Consultant	\$2	\$2	\$0	\$0	\$0	\$0	\$0	\$0	\$4
Env Monitoring - Staff	\$2	\$2	\$0	\$0	\$0	\$0	\$0	\$0	\$4
<b>Total</b>	<b>\$800</b>	<b>\$36</b>	<b>\$0</b>	<b>\$0</b>	<b>\$0</b>	<b>\$0</b>	<b>\$0</b>	<b>\$0</b>	<b>\$836</b>

Project Schedule	Prior FY*	FY 18/19	FY 19/20	FY 20/21	FY 21/22	FY 22/23	FY 23/24-27/28**	FY 28/29-37/38**
Planning/Environmental								
Design								
Right Of Way								
Construction								
Environmental Monitoring								

\*Prior FY includes actual revenue and expenditures through 06/30/17, plus amounts estimated through 6/30/18.

\*\*FY 23/24 - 27/28 and FY 28/29 - 37/38 revenue and expenditures are not included for the Tahoe EIP, as it is a five-year program.





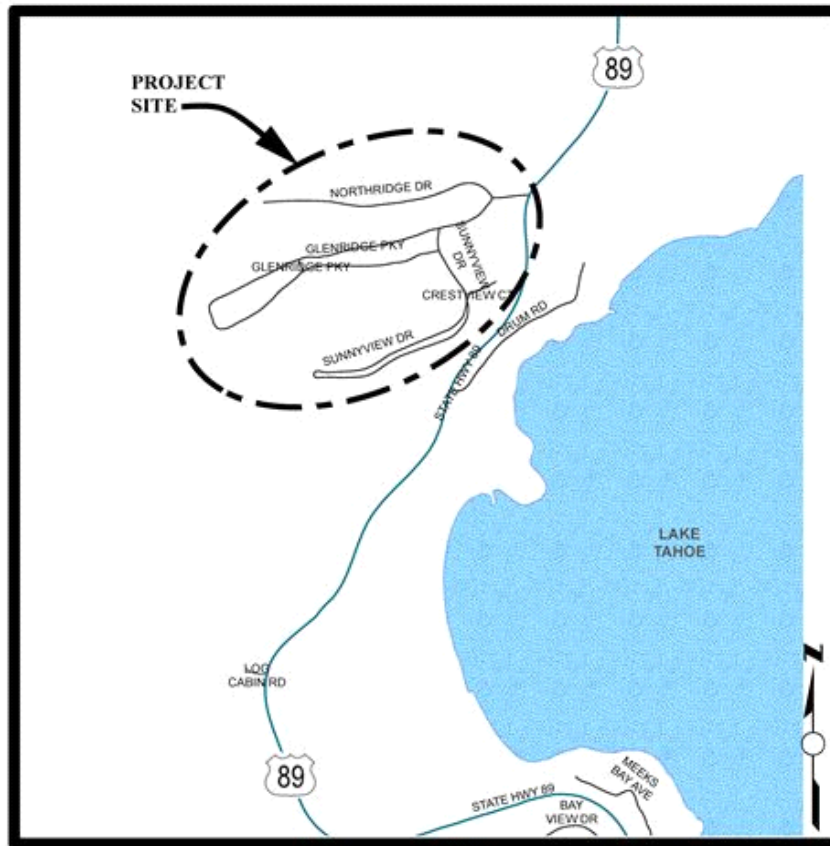
# Glenridge Erosion Control Project

## CIP Project Summary

Project No: 95180 / 36107014

Type: Erosion Control - (EIP)

Supervisor District(s) 5



### LOCATION MAP

NOT TO SCALE

#### **Project Description:**

The Glenridge Erosion Control Project is bounded by the Northridge Drive to the north, forested lands to the west, State Route 89 to the east and Sunnyview Drive to the south. The main goal of the Project is to improve the clarity of Lake Tahoe by reducing the detrimental water quality impacts of the Glenridge Park Unit No. 1 subdivision on Lake Tahoe clarity. The objective of the Project is the reduction in the transport of fine sediment from the Project area by constructing water quality Best Management Practices (BMPs) prior to reaching Lake Tahoe to the maximum extent practicable.

Expenditures thru 6/30/2017: \$0

Project Initiation Date: 06/23/09





# Glenridge Erosion Control Project

## Financing Plan & Tentative Schedule

Project No: 95180 / 36107014

Type: Erosion Control - (EIP)

Supervisor District(s) 5

*All Figures in Thousands*

Revenue by Funding Source	Prior FY*	FY 18/19	FY 19/20	FY 20/21	FY 21/22	FY 22/23	FY 23/24-27/28**	FY 28/29-37/38**	Total
California Tahoe Conservancy Planning Grant	\$0	\$0	\$60	\$140	\$117	\$0	\$0	\$0	\$316
California Tahoe Conservancy Site Improvement Grant	\$0	\$0	\$0	\$0	\$2	\$947	\$0	\$0	\$949
Tahoe Regional Planning Agency/Water Quality	\$0	\$0	\$0	\$0	\$232	\$0	\$0	\$0	\$232
United States Forest Service Planning Grant	\$0	\$0	\$0	\$0	\$233	\$84	\$0	\$0	\$317
United States Forest Service Site Improvement Grant	\$0	\$0	\$0	\$0	\$0	\$1,018	\$0	\$0	\$1,018
<b>Total</b>	\$0	\$0	\$60	\$140	\$585	\$2,048	\$0	\$0	\$2,832

*All Figures in Thousands*

Expenditures	Prior FY*	FY 18/19	FY 19/20	FY 20/21	FY 21/22	FY 22/23	FY 23/24-27/28**	FY 28/29-37/38**	Total
Planning/Env - Consultant	\$0	\$0	\$0	\$3	\$0	\$0	\$0	\$0	\$3
Planning/Env - Staff	\$0	\$0	\$60	\$37	\$0	\$0	\$0	\$0	\$97
Design - Staff	\$0	\$0	\$0	\$100	\$563	\$0	\$0	\$0	\$663
Right of Way - Acquisition	\$0	\$0	\$0	\$0	\$6	\$0	\$0	\$0	\$6
Right of Way - Consultant	\$0	\$0	\$0	\$0	\$4	\$0	\$0	\$0	\$4
Right of Way - Staff	\$0	\$0	\$0	\$0	\$13	\$0	\$0	\$0	\$13
Construction Mgmt - Consultant	\$0	\$0	\$0	\$0	\$0	\$80	\$0	\$0	\$80
Construction Mgmt - Staff	\$0	\$0	\$0	\$0	\$0	\$260	\$0	\$0	\$260
Direct Construction Costs	\$0	\$0	\$0	\$0	\$0	\$1,578	\$0	\$0	\$1,578
Plant Establishment - Consultant	\$0	\$0	\$0	\$0	\$0	\$13	\$0	\$0	\$13
Plant Establishment - Staff	\$0	\$0	\$0	\$0	\$0	\$118	\$0	\$0	\$118
<b>Total</b>	\$0	\$0	\$60	\$140	\$585	\$2,048	\$0	\$0	\$2,832

Project Schedule	Prior FY*	FY 18/19	FY 19/20	FY 20/21	FY 21/22	FY 22/23	FY 23/24-27/28**	FY 28/29-37/38**
Planning/Environmental								
Design								
Right Of Way								
Construction								
Environmental Monitoring								

\*Prior FY includes actual revenue and expenditures through 06/30/17, plus amounts estimated through 6/30/18.

\*\*FY 23/24 - 27/28 and FY 28/29 - 37/38 revenue and expenditures are not included for the Tahoe EIP, as it is a five-year program.



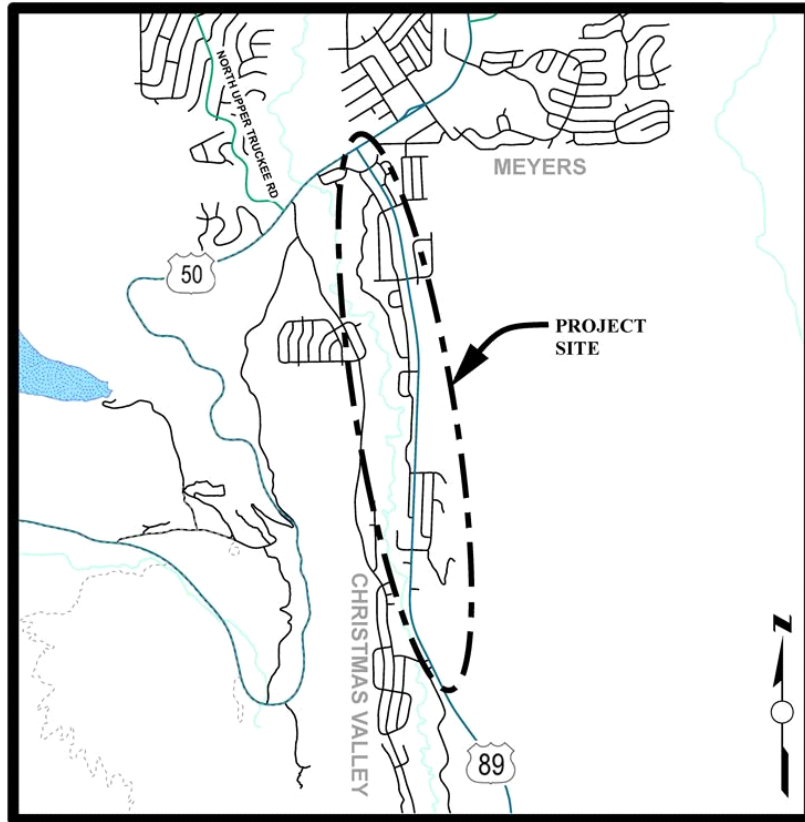
# Highway 89 Class 1 Trail

## CIP Project Summary

Project No: 95708 / 36107010

Type: Pedestrian Way/Bike Path

Supervisor District(s) 5



### LOCATION MAP

NOT TO SCALE

#### **Project Description:**

The Class I bikeway along State Route 89 from Portal Road to US Highway 50 in Christmas Valley is intended to improve the regional bicycle path network by providing a critical link through the Christmas Valley area. The purpose of the project is to provide access to local businesses, schools, and offices for bicyclists and pedestrians, to reduce vehicular transportation, and to enhance recreational opportunities within the Lake Tahoe Basin. This bicycle facility will connect to the existing Pat Lowe Memorial Bike Path in community of Meyers.

Expenditures thru 6/30/2017: \$0

Project Initiation Date: 02/13/07



# Highway 89 Class 1 Trail

## Financing Plan & Tentative Schedule

Project No: 95708 / 36107010

Type: Pedestrian Way/Bike Path

Supervisor District(s) 5

**All Figures in Thousands**

Revenue by Funding Source	Prior FY*	FY 18/19	FY 19/20	FY 20/21	FY 21/22	FY 22/23	FY 23/24-27/28**	FY 28/29-37/38**	Total
Bicycle Transportation Account (BTA)	\$0	\$0	\$0	\$24	\$49	\$0	\$0	\$0	\$73
California Tahoe Conservancy Site Improvement Grant	\$0	\$0	\$75	\$0	\$53	\$242	\$0	\$0	\$369
Congestion Mitigation and Air Quality Program	\$0	\$0	\$0	\$0	\$0	\$450	\$0	\$0	\$450
RSTP Exchange Funds-TRPA	\$0	\$0	\$0	\$78	\$450	\$250	\$0	\$0	\$778
Tahoe Regional Planning Agency/Air Quality	\$0	\$0	\$80	\$20	\$331	\$0	\$0	\$0	\$431
<b>Total</b>	<b>\$0</b>	<b>\$0</b>	<b>\$155</b>	<b>\$122</b>	<b>\$882</b>	<b>\$942</b>	<b>\$0</b>	<b>\$0</b>	<b>\$2,100</b>

**All Figures in Thousands**

Expenditures	Prior FY*	FY 18/19	FY 19/20	FY 20/21	FY 21/22	FY 22/23	FY 23/24-27/28**	FY 28/29-37/38**	Total
Planning/Env - Consultant	\$0	\$0	\$0	\$25	\$0	\$0	\$0	\$0	\$25
Planning/Env - Staff	\$0	\$0	\$55	\$22	\$0	\$0	\$0	\$0	\$77
Design - Staff	\$0	\$0	\$100	\$75	\$0	\$0	\$0	\$0	\$175
Construction Mgmt - Consultant	\$0	\$0	\$0	\$0	\$0	\$7	\$0	\$0	\$7
Construction Mgmt - Staff	\$0	\$0	\$0	\$0	\$182	\$190	\$0	\$0	\$372
Direct Construction Costs	\$0	\$0	\$0	\$0	\$700	\$720	\$0	\$0	\$1,420
Env Monitoring - Consultant	\$0	\$0	\$0	\$0	\$0	\$0	\$0	\$0	\$0
Env Monitoring - Staff	\$0	\$0	\$0	\$0	\$0	\$10	\$0	\$0	\$10
Plant Establishment - Consultant	\$0	\$0	\$0	\$0	\$0	\$0	\$0	\$0	\$0
Plant Establishment - Staff	\$0	\$0	\$0	\$0	\$0	\$15	\$0	\$0	\$15
<b>Total</b>	<b>\$0</b>	<b>\$0</b>	<b>\$155</b>	<b>\$122</b>	<b>\$882</b>	<b>\$942</b>	<b>\$0</b>	<b>\$0</b>	<b>\$2,100</b>

Project Schedule	Prior FY*	FY 18/19	FY 19/20	FY 20/21	FY 21/22	FY 22/23	FY 23/24-27/28**	FY 28/29-37/38**
Planning/Environmental								
Design								
Right Of Way								
Construction								
Environmental Monitoring								

\*Prior FY includes actual revenue and expenditures through 06/30/17, plus amounts estimated through 6/30/18.

\*\*FY 23/24 - 27/28 and FY 28/29 - 37/38 revenue and expenditures are not included for the Tahoe EIP, as it is a five-year program.



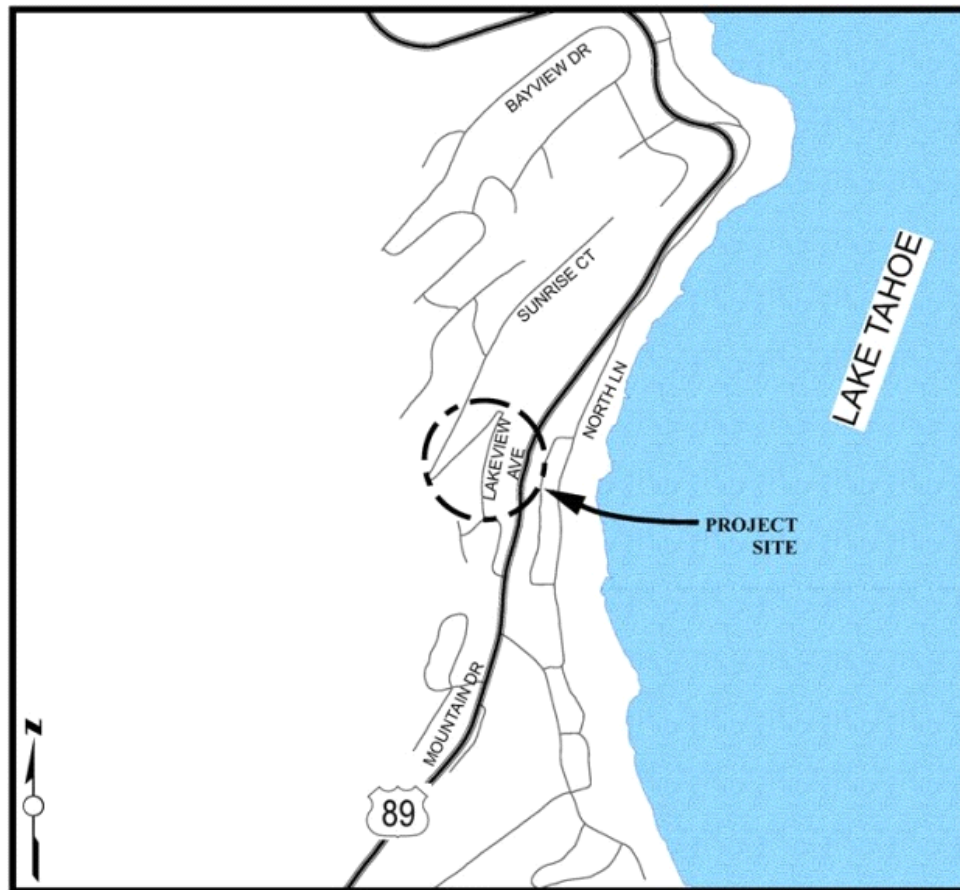
# Lakeview Avenue Storm Damage

## CIP Project Summary

Project No: 78722 / 36102021

Type: Emergency

Supervisor District(s) 5



### LOCATION MAP

NOT TO SCALE

#### **Project Description:**

Lakeview Avenue road failure between Silvertip and Saturn. High flows caused slope failure, curb and gutter/roadway failure.

Expenditures thru 6/30/2017: \$7,705

Project Initiation Date: 02/08/17



# Lakeview Avenue Storm Damage

## Financing Plan & Tentative Schedule

Project No: 78722 / 36102021

Type: Emergency

Supervisor District(s) 5

### All Figures in Thousands

Revenue by Funding Source	Prior FY*	FY 18/19	FY 19/20	FY 20/21	FY 21/22	FY 22/23	FY 23/24-27/28**	FY 28/29-37/38**	Total
Federal Disaster Funding	\$158	\$361	\$0	\$0	\$0	\$0	\$0	\$0	\$519
Road Fund/Discretionary	\$13	\$30	\$0	\$0	\$0	\$0	\$0	\$0	\$43
State Disaster Relief	\$40	\$90	\$0	\$0	\$0	\$0	\$0	\$0	\$130
<b>Total</b>	<b>\$211</b>	<b>\$481</b>	<b>\$0</b>	<b>\$0</b>	<b>\$0</b>	<b>\$0</b>	<b>\$0</b>	<b>\$0</b>	<b>\$692</b>

### All Figures in Thousands

Expenditures	Prior FY*	FY 18/19	FY 19/20	FY 20/21	FY 21/22	FY 22/23	FY 23/24-27/28**	FY 28/29-37/38**	Total
Planning/Env - Consultant	\$0	\$0	\$0	\$0	\$0	\$0	\$0	\$0	\$0
Planning/Env - Staff	\$8	\$0	\$0	\$0	\$0	\$0	\$0	\$0	\$8
Design - Consultant	\$20	\$0	\$0	\$0	\$0	\$0	\$0	\$0	\$20
Design Engineering & Admin - Staff	\$53	\$0	\$0	\$0	\$0	\$0	\$0	\$0	\$53
Right of Way - Staff	\$13	\$0	\$0	\$0	\$0	\$0	\$0	\$0	\$13
Construction Mgmt - Consultant	\$4	\$25	\$0	\$0	\$0	\$0	\$0	\$0	\$29
Construction Mgmt - Staff	\$14	\$56	\$0	\$0	\$0	\$0	\$0	\$0	\$70
Direct Construction Costs	\$100	\$400	\$0	\$0	\$0	\$0	\$0	\$0	\$500
<b>Total</b>	<b>\$211</b>	<b>\$481</b>	<b>\$0</b>	<b>\$0</b>	<b>\$0</b>	<b>\$0</b>	<b>\$0</b>	<b>\$0</b>	<b>\$692</b>

Project Schedule	Prior FY*	FY 18/19	FY 19/20	FY 20/21	FY 21/22	FY 22/23	FY 23/24-27/28**	FY 28/29-37/38**
Planning/Environmental								
Design								
Right Of Way								
Construction								
Environmental Monitoring								

\*Prior FY includes actual revenue and expenditures through 06/30/17, plus amounts estimated through 6/30/18.

\*\*FY 23/24 - 27/28 and FY 28/29 - 37/38 revenue and expenditures are not included for the Tahoe EIP, as it is a five-year program.



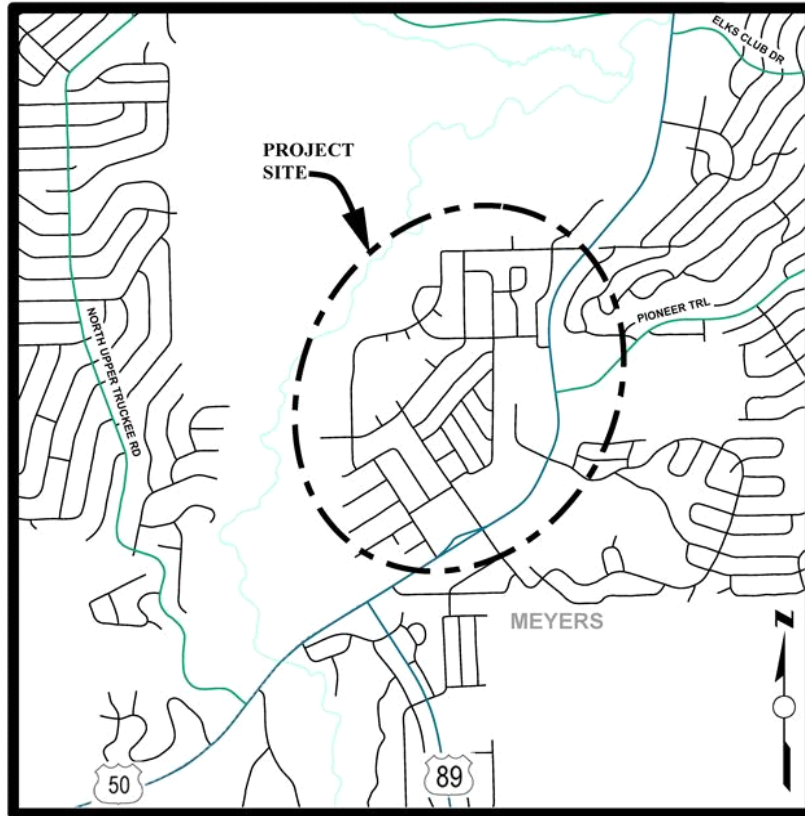
# Meyers Stream Environment Zone/Erosion Control Project

## CIP Project Summary

Project No: 95179 / 36107007

Type: Erosion Control - (EIP)

Supervisor District(s) 5



### LOCATION MAP

NOT TO SCALE

#### **Project Description:**

The Meyers Stream Environment Zone/Erosion Control Project is located in Tahoe Paradise-Meadowvale, Tahoe Paradise-Mandan and Meyers Residential. The main goal of the Project is to improve the clarity of Lake Tahoe by reducing the detrimental water quality impacts of the Meyers residential area on Lake Tahoe clarity. The objective of the Project is the reduction in the transport of fine sediment from the Project area by constructing water quality Best Management Practices (BMPs) within the Project area. This Project will be split into several areas with the main area focused on the US 50/Meyers corridor area based on the Pollutant Load reductions models.

Expenditures thru 6/30/2017: \$988,983

Project Initiation Date: 12/15/10



# Meyers Stream Environment Zone/Erosion Control Project

## Financing Plan & Tentative Schedule

Project No: 95179 / 36107007

Type: Erosion Control - (EIP)

Supervisor District(s) 5

**All Figures in Thousands**

Revenue by Funding Source	Prior FY*	FY 18/19	FY 19/20	FY 20/21	FY 21/22	FY 22/23	FY 23/24-27/28**	FY 28/29-37/38**	Total
California Tahoe Conservancy Planning Grant	\$24	\$0	\$0	\$0	\$0	\$0	\$0	\$0	\$24
California Tahoe Conservancy Site Improvement Grant	\$1,075	\$15	\$11	\$0	\$0	\$0	\$0	\$0	\$1,100
Tahoe Regional Planning Agency/Stream Environmental Zone	\$439	\$32	\$0	\$0	\$0	\$0	\$0	\$0	\$470
United States Forest Service Planning Grant	\$400	\$0	\$0	\$0	\$0	\$0	\$0	\$0	\$400
United States Forest Service Site Improvement Grant	\$652	\$10	\$0	\$0	\$0	\$0	\$0	\$0	\$662
<b>Total</b>	<b>\$2,590</b>	<b>\$56</b>	<b>\$11</b>	<b>\$0</b>	<b>\$0</b>	<b>\$0</b>	<b>\$0</b>	<b>\$0</b>	<b>\$2,657</b>

**All Figures in Thousands**

Expenditures	Prior FY*	FY 18/19	FY 19/20	FY 20/21	FY 21/22	FY 22/23	FY 23/24-27/28**	FY 28/29-37/38**	Total
Planning/Env - Consultant	\$33	\$0	\$0	\$0	\$0	\$0	\$0	\$0	\$33
Planning/Env - Staff	\$261	\$0	\$0	\$0	\$0	\$0	\$0	\$0	\$261
Survey - Staff	\$0	\$0	\$0	\$0	\$0	\$0	\$0	\$0	\$0
Design - Consultant	\$23	\$0	\$0	\$0	\$0	\$0	\$0	\$0	\$23
Design - Staff	\$550	\$0	\$0	\$0	\$0	\$0	\$0	\$0	\$550
Right of Way - Acquisition	\$0	\$0	\$0	\$0	\$0	\$0	\$0	\$0	\$0
Right of Way - Consultant	\$0	\$0	\$0	\$0	\$0	\$0	\$0	\$0	\$0
Right of Way - Staff	\$0	\$0	\$0	\$0	\$0	\$0	\$0	\$0	\$0
Construction Mgmt - Consultant	\$26	\$0	\$0	\$0	\$0	\$0	\$0	\$0	\$26
Construction Mgmt - Staff	\$331	\$0	\$0	\$0	\$0	\$0	\$0	\$0	\$331
Direct Construction Costs	\$1,307	\$0	\$0	\$0	\$0	\$0	\$0	\$0	\$1,307
Env Monitoring - Consultant	\$4	\$4	\$2	\$0	\$0	\$0	\$0	\$0	\$9
Env Monitoring - Staff	\$33	\$25	\$9	\$0	\$0	\$0	\$0	\$0	\$67
Plant Establishment - Consultant	\$5	\$8	\$0	\$0	\$0	\$0	\$0	\$0	\$13
Plant Establishment - Staff	\$0	\$0	\$0	\$0	\$0	\$0	\$0	\$0	\$0
Plant Establishment - Staff	\$18	\$20	\$0	\$0	\$0	\$0	\$0	\$0	\$38
<b>Total</b>	<b>\$2,590</b>	<b>\$56</b>	<b>\$11</b>	<b>\$0</b>	<b>\$0</b>	<b>\$0</b>	<b>\$0</b>	<b>\$0</b>	<b>\$2,657</b>

Project Schedule	Prior FY*	FY 18/19	FY 19/20	FY 20/21	FY 21/22	FY 22/23	FY 23/24-27/28**	FY 28/29-37/38**
Planning/Environmental								
Design								
Right Of Way								
Construction								
Environmental Monitoring								

\*Prior FY includes actual revenue and expenditures through 06/30/17, plus amounts estimated through 6/30/18.

\*\*FY 23/24 - 27/28 and FY 28/29 - 37/38 revenue and expenditures are not included for the Tahoe EIP, as it is a five-year program.





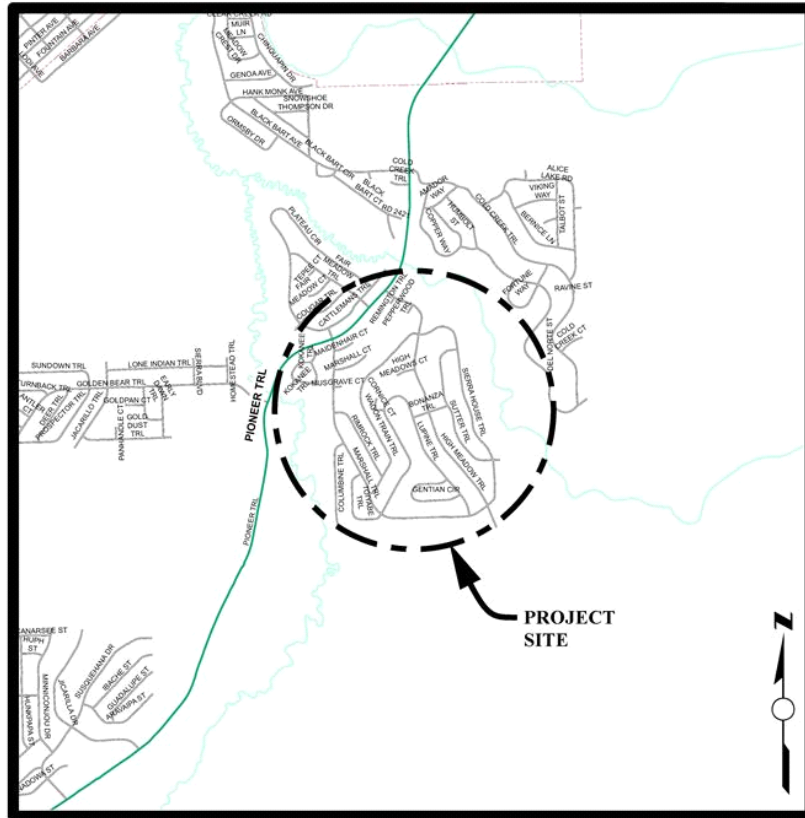
# Montgomery Estates Area 2 Erosion Control Project

## CIP Project Summary

Project No: 95170 / 36107001

Type: Erosion Control - (EIP)

Supervisor District(s) 5



### LOCATION MAP

NOT TO SCALE

#### **Project Description:**

The Montgomery Estates Area 2 Erosion Control is bounded by Pioneer Trail to the south, Trout Creek to the east and Cold Creek to the west. The main goal of the Project is to improve the clarity of Lake Tahoe by reducing the detrimental water quality impacts of the Montgomery Estates subdivision on Lake Tahoe clarity. The objective of the Project is the reduction in the transport of fine sediment from the Project area by constructing water quality Best Management Practices (BMPs) prior to reaching Cold Creek and Trout Creek to the maximum extent practicable.

Expenditures thru 6/30/2017: \$909,642

Project Initiation Date: 12/15/01



# Montgomery Estates Area 2 Erosion Control Project

## Financing Plan & Tentative Schedule

Project No: 95170 / 36107001

Type: Erosion Control - (EIP)

Supervisor District(s) 5

### All Figures in Thousands

Revenue by Funding Source	Prior FY*	FY 18/19	FY 19/20	FY 20/21	FY 21/22	FY 22/23	FY 23/24-27/28**	FY 28/29-37/38**	Total
Miscellaneous Reimbursement	\$1	\$0	\$0	\$0	\$0	\$0	\$0	\$0	\$1
State Water Resources Control Board	\$197	\$0	\$0	\$0	\$0	\$0	\$0	\$0	\$197
Tahoe Regional Planning Agency/Water Quality	\$40	\$2	\$0	\$0	\$0	\$0	\$0	\$0	\$42
United States Forest Service Planning Grant	\$278	\$0	\$0	\$0	\$0	\$0	\$0	\$0	\$278
United States Forest Service Site Improvement Grant	\$415	\$0	\$0	\$0	\$0	\$0	\$0	\$0	\$415
<b>Total</b>	<b>\$930</b>	<b>\$2</b>	<b>\$0</b>	<b>\$0</b>	<b>\$0</b>	<b>\$0</b>	<b>\$0</b>	<b>\$0</b>	<b>\$932</b>

### All Figures in Thousands

Expenditures	Prior FY*	FY 18/19	FY 19/20	FY 20/21	FY 21/22	FY 22/23	FY 23/24-27/28**	FY 28/29-37/38**	Total
Planning/Env - Consultant	\$0	\$0	\$0	\$0	\$0	\$0	\$0	\$0	\$0
Planning/Env - Staff	\$4	\$0	\$0	\$0	\$0	\$0	\$0	\$0	\$4
Survey - Staff	\$0	\$0	\$0	\$0	\$0	\$0	\$0	\$0	\$0
Design - Consultant	\$24	\$0	\$0	\$0	\$0	\$0	\$0	\$0	\$24
Design - Staff	\$237	\$0	\$0	\$0	\$0	\$0	\$0	\$0	\$237
Right of Way - Staff	\$8	\$0	\$0	\$0	\$0	\$0	\$0	\$0	\$8
Construction Mgmt - Consultant	\$3	\$0	\$0	\$0	\$0	\$0	\$0	\$0	\$3
Construction Mgmt - Staff	\$179	\$0	\$0	\$0	\$0	\$0	\$0	\$0	\$179
Direct Construction Costs	\$376	\$0	\$0	\$0	\$0	\$0	\$0	\$0	\$376
Env Monitoring - Consultant	\$7	\$0	\$0	\$0	\$0	\$0	\$0	\$0	\$7
Env Monitoring - Staff	\$82	\$0	\$0	\$0	\$0	\$0	\$0	\$0	\$82
Plant Establishment - Consultant	\$0	\$0	\$0	\$0	\$0	\$0	\$0	\$0	\$0
Plant Establishment - Staff	\$10	\$2	\$0	\$0	\$0	\$0	\$0	\$0	\$12
<b>Total</b>	<b>\$930</b>	<b>\$2</b>	<b>\$0</b>	<b>\$0</b>	<b>\$0</b>	<b>\$0</b>	<b>\$0</b>	<b>\$0</b>	<b>\$932</b>

Project Schedule	Prior FY*	FY 18/19	FY 19/20	FY 20/21	FY 21/22	FY 22/23	FY 23/24-27/28**	FY 28/29-37/38**
Planning/Environmental								
Design								
Right Of Way								
Construction								
Environmental Monitoring								

\*Prior FY includes actual revenue and expenditures through 06/30/17, plus amounts estimated through 6/30/18.

\*\*FY 23/24 - 27/28 and FY 28/29 - 37/38 revenue and expenditures are not included for the Tahoe EIP, as it is a five-year program.



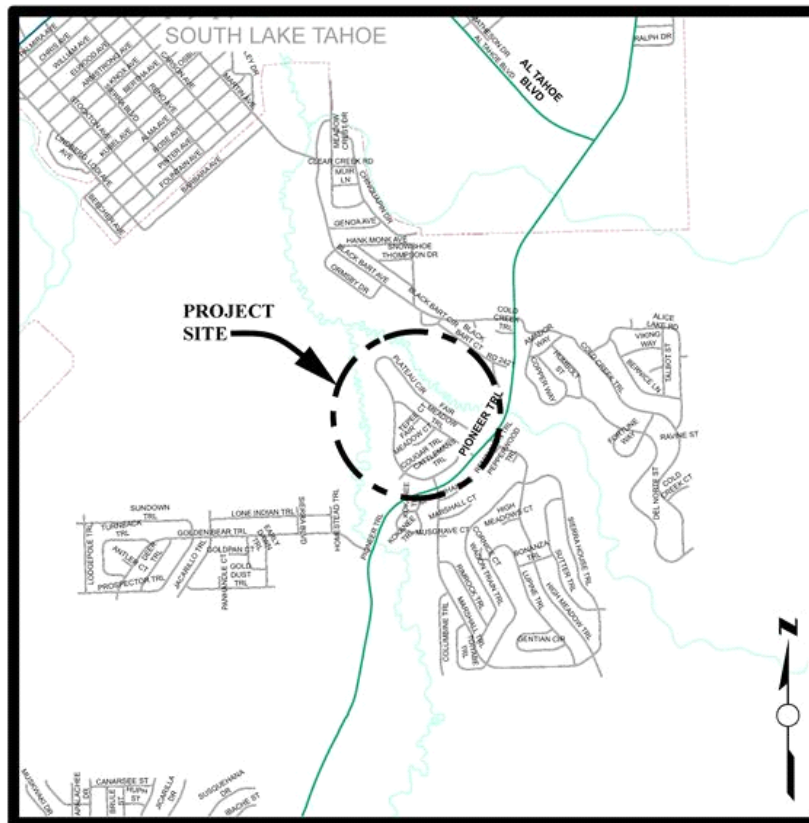
# Montgomery Estates Area 3 Erosion Control Project

## CIP Project Summary

Project No: 95172 / 36107008

Type: Erosion Control - (EIP)

Supervisor District(s) 5



### LOCATION MAP

NOT TO SCALE

#### **Project Description:**

The Montgomery Estates Area 3 Erosion Control is bordered by Trout Creek to the west, Cold Creek to the north and Pioneer Trail to the south. The main goal of the Project is to improve the clarity of Lake Tahoe by reducing the detrimental water quality impacts of the Montgomery Estates subdivision on Lake Tahoe clarity. The objective of the Project is the reduction in the transport of fine sediment from the Project area by constructing water quality Best Management Practices (BMPs) prior to reaching Cold Creek and Trout Creek to the maximum extent practicable.

Expenditures thru 6/30/2017: \$485,578

Project Initiation Date: 12/15/01



# Montgomery Estates Area 3 Erosion Control Project

## Financing Plan & Tentative Schedule

Project No: 95172 / 36107008

Type: Erosion Control - (EIP)

Supervisor District(s) 5

### All Figures in Thousands

Revenue by Funding Source	Prior FY*	FY 18/19	FY 19/20	FY 20/21	FY 21/22	FY 22/23	FY 23/24-27/28**	FY 28/29-37/38**	Total
Tahoe Regional Planning Agency/Water Quality	\$8	\$4	\$0	\$0	\$0	\$0	\$0	\$0	\$12
United States Forest Service Planning Grant	\$127	\$0	\$0	\$0	\$0	\$0	\$0	\$0	\$127
United States Forest Service Site Improvement Grant	\$367	\$0	\$0	\$0	\$0	\$0	\$0	\$0	\$367
<b>Total</b>	<b>\$502</b>	<b>\$4</b>	<b>\$0</b>	<b>\$0</b>	<b>\$0</b>	<b>\$0</b>	<b>\$0</b>	<b>\$0</b>	<b>\$506</b>

### All Figures in Thousands

Expenditures	Prior FY*	FY 18/19	FY 19/20	FY 20/21	FY 21/22	FY 22/23	FY 23/24-27/28**	FY 28/29-37/38**	Total
Planning/Env - Consultant	\$0	\$0	\$0	\$0	\$0	\$0	\$0	\$0	\$0
Planning/Env - Staff	\$0	\$0	\$0	\$0	\$0	\$0	\$0	\$0	\$0
Design - Consultant	\$17	\$0	\$0	\$0	\$0	\$0	\$0	\$0	\$17
Design - Staff	\$117	\$0	\$0	\$0	\$0	\$0	\$0	\$0	\$117
Design Engineering & Admin - Consultant	\$0	\$0	\$0	\$0	\$0	\$0	\$0	\$0	\$0
Right of Way - Consultant	\$0	\$0	\$0	\$0	\$0	\$0	\$0	\$0	\$0
Right of Way - Staff	\$0	\$0	\$0	\$0	\$0	\$0	\$0	\$0	\$0
Construction Mgmt - Consultant	\$2	\$0	\$0	\$0	\$0	\$0	\$0	\$0	\$2
Construction Mgmt - Staff	\$128	\$0	\$0	\$0	\$0	\$0	\$0	\$0	\$128
Direct Construction Costs	\$216	\$0	\$0	\$0	\$0	\$0	\$0	\$0	\$216
Env Monitoring - Consultant	\$5	\$0	\$0	\$0	\$0	\$0	\$0	\$0	\$5
Env Monitoring - Staff	\$10	\$0	\$0	\$0	\$0	\$0	\$0	\$0	\$10
Plant Establishment - Consultant	\$0	\$0	\$0	\$0	\$0	\$0	\$0	\$0	\$0
Plant Establishment - Staff	\$7	\$4	\$0	\$0	\$0	\$0	\$0	\$0	\$11
<b>Total</b>	<b>\$502</b>	<b>\$4</b>	<b>\$0</b>	<b>\$0</b>	<b>\$0</b>	<b>\$0</b>	<b>\$0</b>	<b>\$0</b>	<b>\$506</b>

Project Schedule	Prior FY*	FY 18/19	FY 19/20	FY 20/21	FY 21/22	FY 22/23	FY 23/24-27/28**	FY 28/29-37/38**
Planning/Environmental								
Design								
Right Of Way								
Construction								
Environmental Monitoring								

\*Prior FY includes actual revenue and expenditures through 06/30/17, plus amounts estimated through 6/30/18.

\*\*FY 23/24 - 27/28 and FY 28/29 - 37/38 revenue and expenditures are not included for the Tahoe EIP, as it is a five-year program.



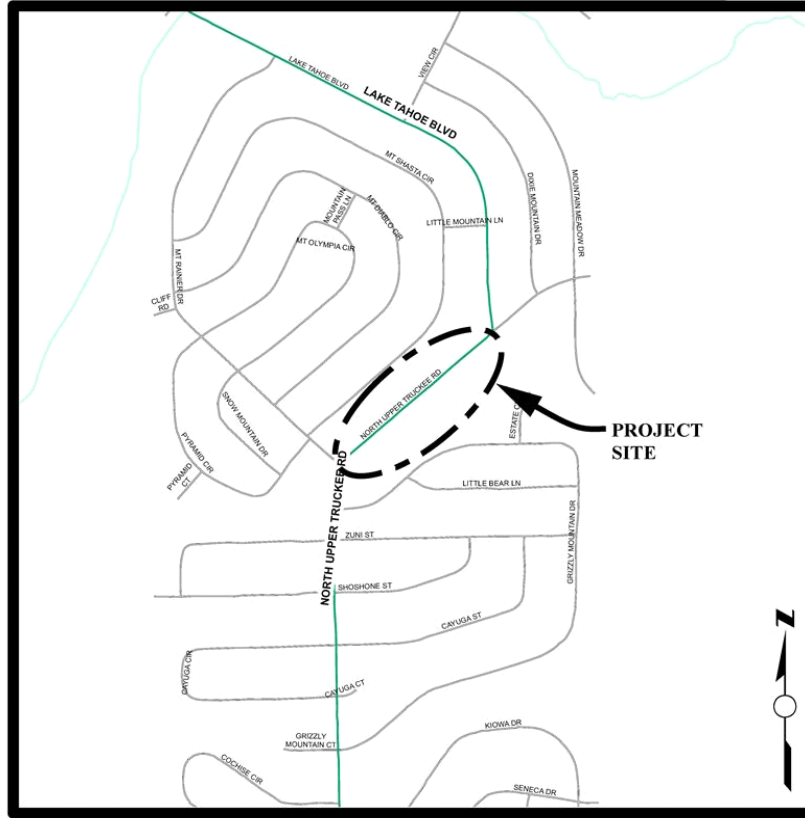
# North Upper Truckee SEZ Restoration Project

## CIP Project Summary

Project No: 95166 / 36107012

Type: Erosion Control - (EIP)

Supervisor District(s) 5



### LOCATION MAP

NOT TO SCALE

#### **Project Description:**

This Project is part of the North Upper Truckee Erosion Control Project series (I&II completed in the 1990s with the main focus on enhancement of the stream environment zone (SEZ) area adjacent to North Upper Truckee Road). The main goal of the Project is to enhance the SEZ area along North Upper Truckee from Lake Tahoe Blvd to Grizzly Mountain Drive.

Expenditures thru 6/30/2017: \$0

Project Initiation Date: 02/13/07



# North Upper Truckee SEZ Restoration Project

## Financing Plan & Tentative Schedule

Project No: 95166 / 36107012

Type: Erosion Control - (EIP)

Supervisor District(s) 5

**All Figures in Thousands**

Revenue by Funding Source	Prior FY*	FY 18/19	FY 19/20	FY 20/21	FY 21/22	FY 22/23	FY 23/24-27/28**	FY 28/29-37/38**	Total
California Tahoe Conservancy Site Improvement Grant	\$0	\$0	\$0	\$0	\$129	\$297	\$0	\$0	\$425
Tahoe Regional Planning Agency/Stream Environmental Zone	\$0	\$0	\$0	\$40	\$0	\$105	\$0	\$0	\$145
United States Forest Service Planning Grant	\$0	\$0	\$0	\$0	\$0	\$341	\$0	\$0	\$341
<b>Total</b>	\$0	\$0	\$0	\$40	\$129	\$742	\$0	\$0	\$911

**All Figures in Thousands**

Expenditures	Prior FY*	FY 18/19	FY 19/20	FY 20/21	FY 21/22	FY 22/23	FY 23/24-27/28**	FY 28/29-37/38**	Total
Planning/Env - Consultant	\$0	\$0	\$0	\$10	\$6	\$0	\$0	\$0	\$16
Planning/Env - Staff	\$0	\$0	\$0	\$30	\$13	\$0	\$0	\$0	\$43
Design - Consultant	\$0	\$0	\$0	\$0	\$10	\$0	\$0	\$0	\$10
Design - Staff	\$0	\$0	\$0	\$0	\$100	\$0	\$0	\$0	\$100
Right of Way - Acquisition	\$0	\$0	\$0	\$0	\$0	\$0	\$0	\$0	\$0
Right of Way - Consultant	\$0	\$0	\$0	\$0	\$0	\$0	\$0	\$0	\$0
Right of Way - Staff	\$0	\$0	\$0	\$0	\$0	\$0	\$0	\$0	\$0
Construction Mgmt - Consultant	\$0	\$0	\$0	\$0	\$0	\$10	\$0	\$0	\$10
Construction Mgmt - Staff	\$0	\$0	\$0	\$0	\$0	\$85	\$0	\$0	\$85
Direct Construction Costs	\$0	\$0	\$0	\$0	\$0	\$648	\$0	\$0	\$648
Plant Establishment - Consultant	\$0	\$0	\$0	\$0	\$0	\$0	\$0	\$0	\$0
Plant Establishment - Staff	\$0	\$0	\$0	\$0	\$0	\$0	\$0	\$0	\$0
<b>Total</b>	\$0	\$0	\$0	\$40	\$129	\$742	\$0	\$0	\$911

Project Schedule	Prior FY*	FY 18/19	FY 19/20	FY 20/21	FY 21/22	FY 22/23	FY 23/24-27/28**	FY 28/29-37/38**
Planning/Environmental								
Design								
Right Of Way								
Construction								
Environmental Monitoring								

\*Prior FY includes actual revenue and expenditures through 06/30/17, plus amounts estimated through 6/30/18.

\*\*FY 23/24 - 27/28 and FY 28/29 - 37/38 revenue and expenditures are not included for the Tahoe EIP, as it is a five-year program.



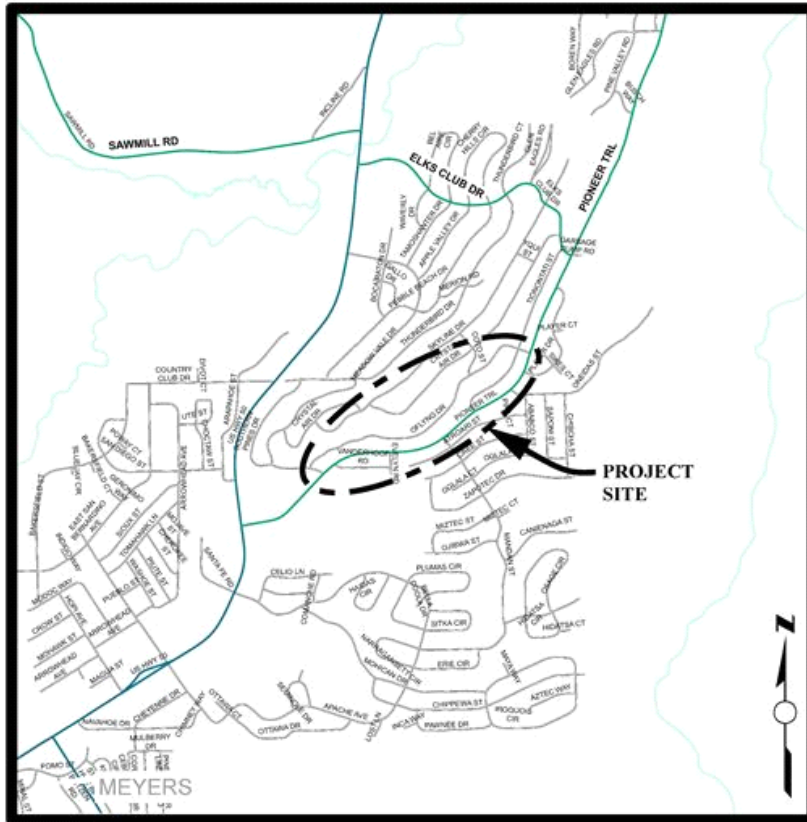
# Oflyng Water Quality Project

## CIP Project Summary

Project No: 95177 / 36107016

Type: Erosion Control - (EIP)

Supervisor District(s) 5



### LOCATION MAP

NOT TO SCALE

#### Project Description:

The Oflyng Water Quality Project is within the Country Club Heights subdivision (Unit 5) and Tahoe Paradise Subdivision (Unit 48), more specifically between Crystal Air Drive at the upper northerly boundary to Pioneer Trail to the south and Southern Pines Drive at the westerly boundary to Elks Club Drive to the east. The project benefits will include increased water quality of urban stormwater and dry weather runoff through infiltration, addressing flood management issues with Low Impact Design principles, and community outreach on stormwater as a resource.

Expenditures thru 6/30/2017: \$1,792

Project Initiation Date: 03/18/14





# Oflyng Water Quality Project

## Financing Plan & Tentative Schedule

Project No: 95177 / 36107016

Type: Erosion Control - (EIP)

Supervisor District(s) 5

### All Figures in Thousands

Revenue by Funding Source	Prior FY*	FY 18/19	FY 19/20	FY 20/21	FY 21/22	FY 22/23	FY 23/24-27/28**	FY 28/29-37/38**	Total
California Tahoe Conservancy Site Improvement Grant	\$1	\$163	\$420	\$0	\$0	\$0	\$0	\$0	\$583
State Water Resources Control Board	\$0	\$15	\$135	\$0	\$0	\$0	\$0	\$0	\$150
Tahoe Regional Planning Agency/Water Quality	\$116	\$8	\$8	\$5	\$4	\$0	\$0	\$0	\$140
<b>Total</b>	<b>\$117</b>	<b>\$185</b>	<b>\$563</b>	<b>\$5</b>	<b>\$4</b>	<b>\$0</b>	<b>\$0</b>	<b>\$0</b>	<b>\$873</b>

### All Figures in Thousands

Expenditures	Prior FY*	FY 18/19	FY 19/20	FY 20/21	FY 21/22	FY 22/23	FY 23/24-27/28**	FY 28/29-37/38**	Total
Planning/Env - Consultant	\$35	\$35	\$0	\$0	\$0	\$0	\$0	\$0	\$70
Planning/Env - Staff	\$67	\$10	\$0	\$0	\$0	\$0	\$0	\$0	\$77
Design - Consultant	\$0	\$35	\$0	\$0	\$0	\$0	\$0	\$0	\$35
Design - Staff	\$15	\$100	\$0	\$0	\$0	\$0	\$0	\$0	\$115
Right of Way - Acquisition	\$0	\$0	\$0	\$0	\$0	\$0	\$0	\$0	\$0
Right of Way - Consultant	\$0	\$0	\$0	\$0	\$0	\$0	\$0	\$0	\$0
Right of Way - Staff	\$0	\$0	\$0	\$0	\$0	\$0	\$0	\$0	\$0
Construction Mgmt - Consultant	\$0	\$0	\$0	\$0	\$0	\$0	\$0	\$0	\$0
Construction Mgmt - Staff	\$0	\$0	\$105	\$0	\$0	\$0	\$0	\$0	\$105
Direct Construction Costs	\$0	\$0	\$450	\$0	\$0	\$0	\$0	\$0	\$450
Env Monitoring - Consultant	\$0	\$0	\$0	\$0	\$0	\$0	\$0	\$0	\$0
Env Monitoring - Staff	\$0	\$5	\$5	\$0	\$0	\$0	\$0	\$0	\$10
Plant Establishment - Consultant	\$0	\$0	\$0	\$0	\$0	\$0	\$0	\$0	\$0
Plant Establishment - Staff	\$0	\$0	\$3	\$5	\$4	\$0	\$0	\$0	\$11
<b>Total</b>	<b>\$117</b>	<b>\$185</b>	<b>\$563</b>	<b>\$5</b>	<b>\$4</b>	<b>\$0</b>	<b>\$0</b>	<b>\$0</b>	<b>\$873</b>

Project Schedule	Prior FY*	FY 18/19	FY 19/20	FY 20/21	FY 21/22	FY 22/23	FY 23/24-27/28**	FY 28/29-37/38**
Planning/Environmental								
Design								
Right Of Way								
Construction								
Environmental Monitoring								

\*Prior FY includes actual revenue and expenditures through 06/30/17, plus amounts estimated through 6/30/18.

\*\*FY 23/24 - 27/28 and FY 28/29 - 37/38 revenue and expenditures are not included for the Tahoe EIP, as it is a five-year program.

*This page intentionally left blank*



# Passenger Facility

## CIP Project Summary

Project No: 95838 / 36107015

Type: Miscellaneous

Supervisor District(s) 5

### Project Description:

Transit passenger facilities will be constructed within the unincorporated El Dorado County portion of the Tahoe Basin. The construction of this transit passenger facility will aid in achieving regional transportation goals related to decreasing dependency on the private automobile by making transit more user friendly for both the local population as well as the high number of visitors who frequent the area. Through the implementation of this project, El Dorado County hopes to increase transit ridership to assist in the protection of the Lake Tahoe environment through a reduction in Vehicle Miles Traveled. These facilities will aid in the operation of the system by making it more enticing and visible to the community.

Expenditures thru 6/30/2017: \$0

Project Initiation Date: 05/05/09

Revenue	by Funding Source	Prior FY*	FY 18/19	FY 19/20	FY 20/21	FY 21/22	FY 22/23	FY 23/24-27/28**	FY 28/29-37/38**	Total
Caltrans		\$0	\$0	\$0	\$0	\$0	\$0	\$0	\$0	\$0
Tahoe Regional Planning Agency/Air Quality		\$0	\$0	\$0	\$20	\$0	\$0	\$0	\$0	\$20
<b>Total</b>		\$0	\$0	\$0	\$20	\$0	\$0	\$0	\$0	\$20

Expenditures	Prior FY*	FY 18/19	FY 19/20	FY 20/21	FY 21/22	FY 22/23	FY 23/24-27/28**	FY 28/29-37/38**	Total
Planning/Env - Consultant	\$0	\$0	\$0	\$10	\$0	\$0	\$0	\$0	\$10
Planning/Env - Staff	\$0	\$0	\$0	\$10	\$0	\$0	\$0	\$0	\$10
Design - Staff	\$0	\$0	\$0	\$0	\$0	\$0	\$0	\$0	\$0
Construction Mgmt - Staff	\$0	\$0	\$0	\$0	\$0	\$0	\$0	\$0	\$0
Direct Construction Costs	\$0	\$0	\$0	\$0	\$0	\$0	\$0	\$0	\$0
Plant Establishment - Staff	\$0	\$0	\$0	\$0	\$0	\$0	\$0	\$0	\$0
<b>Total</b>	\$0	\$0	\$0	\$20	\$0	\$0	\$0	\$0	\$20

\*Prior FY includes actual revenue and expenditures through 06/30/17, plus amounts estimated through 6/30/18.



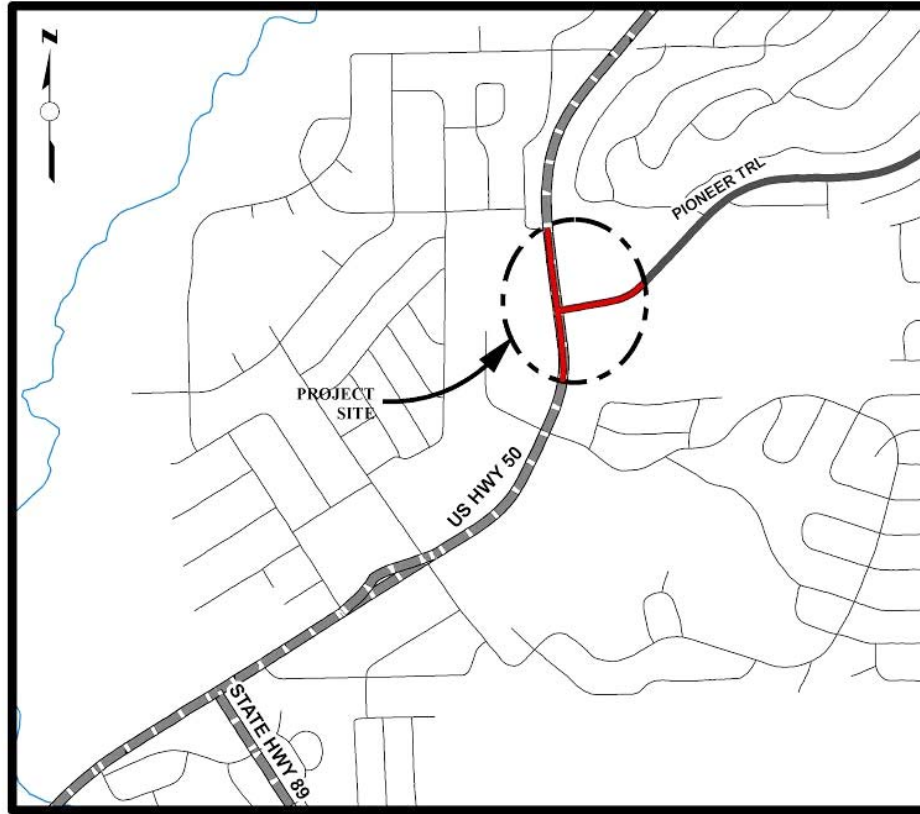
# Pioneer Trail / US 50 Intersection Safety Improvement Project

## CIP Project Summary

Project No: 72379 / 36104026

Type: Intersection

Supervisor District(s) 5



### LOCATION MAP

NOT TO SCALE

#### **Project Description:**

This project was identified as a needed safety improvement in the Federal Highway Administration (FHWA) Resource Center's 2015 Meyers Road Safety Audit, is a priority intersection location in the TRPA 2016 Active Transportation Plan, and is a project of the TRPA Environmental Improvement Program. In-depth analysis for this improvement was conducted as part of TRPA's On Our Way Grant Program. This multi-agency effort included direct participation from the County, TRPA, FHWA, Caltrans Headquarters, Caltrans District 3, and community participation from the Meyers Community Foundation.

Expenditures thru 6/30/2017: \$755

Project Initiation Date: 03/28/17



# Pioneer Trail / US 50 Intersection Safety Improvement Project

## Financing Plan & Tentative Schedule

Project No: 72379 / 36104026

Type: Intersection

Supervisor District(s) 5

**All Figures in Thousands**

Revenue by Funding Source	Prior FY*	FY 18/19	FY 19/20	FY 20/21	FY 21/22	FY 22/23	FY 23/24-27/28**	FY 28/29-37/38**	Total
Congestion Mitigation and Air Quality Program	\$0	\$261	\$109	\$375	\$0	\$0	\$0	\$0	\$745
Highway Safety Improvement Program	\$0	\$0	\$0	\$2,933	\$0	\$0	\$0	\$0	\$2,933
RSTP Exchange Funds-TRPA	\$1	\$299	\$201	\$633	\$0	\$0	\$0	\$0	\$1,134
Tahoe Regional Planning Agency/Air Quality	\$35	\$15	\$15	\$55	\$21	\$0	\$0	\$0	\$141
<b>Total</b>	<b>\$36</b>	<b>\$575</b>	<b>\$325</b>	<b>\$3,996</b>	<b>\$21</b>	<b>\$0</b>	<b>\$0</b>	<b>\$0</b>	<b>\$4,953</b>

**All Figures in Thousands**

Expenditures	Prior FY*	FY 18/19	FY 19/20	FY 20/21	FY 21/22	FY 22/23	FY 23/24-27/28**	FY 28/29-37/38**	Total
Planning/Env - Consultant	\$1	\$250	\$0	\$0	\$0	\$0	\$0	\$0	\$251
Planning/Env - Staff	\$35	\$25	\$0	\$0	\$0	\$0	\$0	\$0	\$60
Design - Consultant	\$0	\$250	\$250	\$0	\$0	\$0	\$0	\$0	\$500
Design - Staff	\$0	\$50	\$50	\$0	\$0	\$0	\$0	\$0	\$100
Construction Mgmt - Consultant	\$0	\$0	\$10	\$0	\$0	\$0	\$0	\$0	\$10
Construction Mgmt - Staff	\$0	\$0	\$15	\$480	\$5	\$0	\$0	\$0	\$500
Direct Construction Costs	\$0	\$0	\$0	\$3,500	\$0	\$0	\$0	\$0	\$3,500
Env Monitoring - Consultant	\$0	\$0	\$0	\$1	\$1	\$0	\$0	\$0	\$2
Env Monitoring - Staff	\$0	\$0	\$0	\$5	\$5	\$0	\$0	\$0	\$10
Plant Establishment - Consultant	\$0	\$0	\$0	\$5	\$5	\$0	\$0	\$0	\$10
Plant Establishment - Staff	\$0	\$0	\$0	\$5	\$5	\$0	\$0	\$0	\$10
<b>Total</b>	<b>\$36</b>	<b>\$575</b>	<b>\$325</b>	<b>\$3,996</b>	<b>\$21</b>	<b>\$0</b>	<b>\$0</b>	<b>\$0</b>	<b>\$4,953</b>

Project Schedule	Prior FY*	FY 18/19	FY 19/20	FY 20/21	FY 21/22	FY 22/23	FY 23/24-27/28**	FY 28/29-37/38**
Planning/Environmental								
Design								
Right Of Way								
Construction								
Environmental Monitoring								

\*Prior FY includes actual revenue and expenditures through 06/30/17, plus amounts estimated through 6/30/18.

\*\*FY 23/24 - 27/28 and FY 28/29 - 37/38 revenue and expenditures are not included for the Tahoe EIP, as it is a five-year program.



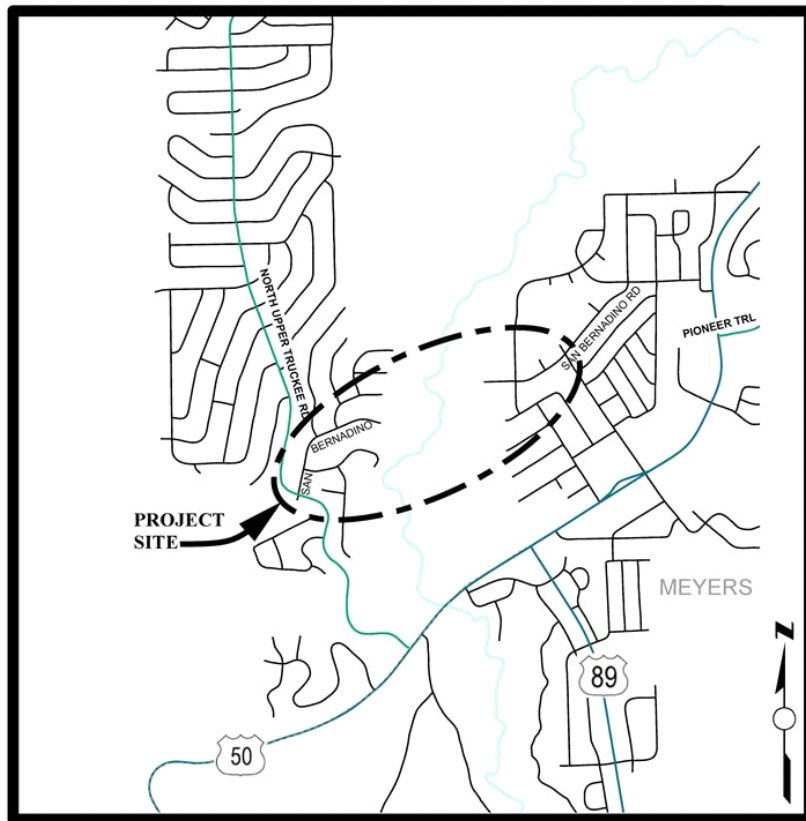
# San Bernardino Class 1 Bike Path Project

## CIP Project Summary

Project No: 95117 / 36107017

Type: Erosion Control - (EIP)

Supervisor District(s) 5



### LOCATION MAP

NOT TO SCALE

#### **Project Description:**

Construct approximately 0.37 miles of Class 1 bike path from East San Bernardino Avenue, just west of the Upper Truckee River, to Tahoe Paradise Park in the community of Meyers in the Tahoe Basin.

Expenditures thru 6/30/2017: \$0

Project Initiation Date: 03/18/14





# San Bernardino Class 1 Bike Path Project

## Financing Plan & Tentative Schedule

Project No: 95117 / 36107017

Type: Erosion Control - (EIP)

Supervisor District(s) 5

### All Figures in Thousands

Revenue by Funding Source	Prior FY*	FY 18/19	FY 19/20	FY 20/21	FY 21/22	FY 22/23	FY 23/24-27/28**	FY 28/29-37/38**	Total
Congestion Mitigation and Air Quality Program	\$0	\$266	\$188	\$0	\$0	\$0	\$0	\$0	\$454
RSTP Exchange Funds-TRPA	\$0	\$0	\$0	\$1,192	\$0	\$0	\$0	\$0	\$1,192
Tahoe Regional Planning Agency/Air Quality	\$25	\$34	\$26	\$0	\$20	\$15	\$0	\$0	\$120
<b>Total</b>	<b>\$25</b>	<b>\$300</b>	<b>\$214</b>	<b>\$1,192</b>	<b>\$20</b>	<b>\$15</b>	<b>\$0</b>	<b>\$0</b>	<b>\$1,766</b>

### All Figures in Thousands

Expenditures	Prior FY*	FY 18/19	FY 19/20	FY 20/21	FY 21/22	FY 22/23	FY 23/24-27/28**	FY 28/29-37/38**	Total
Planning/Env - Consultant	\$0	\$0	\$155	\$0	\$0	\$0	\$0	\$0	\$155
Planning/Env - Staff	\$25	\$125	\$0	\$0	\$0	\$0	\$0	\$0	\$150
Design - Consultant	\$0	\$0	\$15	\$0	\$0	\$0	\$0	\$0	\$15
Design - Staff	\$0	\$175	\$44	\$0	\$0	\$0	\$0	\$0	\$219
Right of Way - Acquisition	\$0	\$0	\$0	\$0	\$0	\$0	\$0	\$0	\$0
Right of Way - Consultant	\$0	\$0	\$0	\$0	\$0	\$0	\$0	\$0	\$0
Right of Way - Staff	\$0	\$0	\$0	\$0	\$0	\$0	\$0	\$0	\$0
Construction Mgmt - Staff	\$0	\$0	\$0	\$192	\$0	\$0	\$0	\$0	\$192
Direct Construction Costs	\$0	\$0	\$0	\$1,000	\$0	\$0	\$0	\$0	\$1,000
Env Monitoring - Consultant	\$0	\$0	\$0	\$0	\$5	\$3	\$0	\$0	\$8
Env Monitoring - Staff	\$0	\$0	\$0	\$0	\$5	\$5	\$0	\$0	\$10
Plant Establishment - Consultant	\$0	\$0	\$0	\$0	\$5	\$3	\$0	\$0	\$8
Plant Establishment - Staff	\$0	\$0	\$0	\$0	\$5	\$5	\$0	\$0	\$10
<b>Total</b>	<b>\$25</b>	<b>\$300</b>	<b>\$214</b>	<b>\$1,192</b>	<b>\$20</b>	<b>\$15</b>	<b>\$0</b>	<b>\$0</b>	<b>\$1,766</b>

Project Schedule	Prior FY*	FY 18/19	FY 19/20	FY 20/21	FY 21/22	FY 22/23	FY 23/24-27/28**	FY 28/29-37/38**
Planning/Environmental								
Design								
Right Of Way								
Construction								
Environmental Monitoring								

\*Prior FY includes actual revenue and expenditures through 06/30/17, plus amounts estimated through 6/30/18.

\*\*FY 23/24 - 27/28 and FY 28/29 - 37/38 revenue and expenditures are not included for the Tahoe EIP, as it is a five-year program.



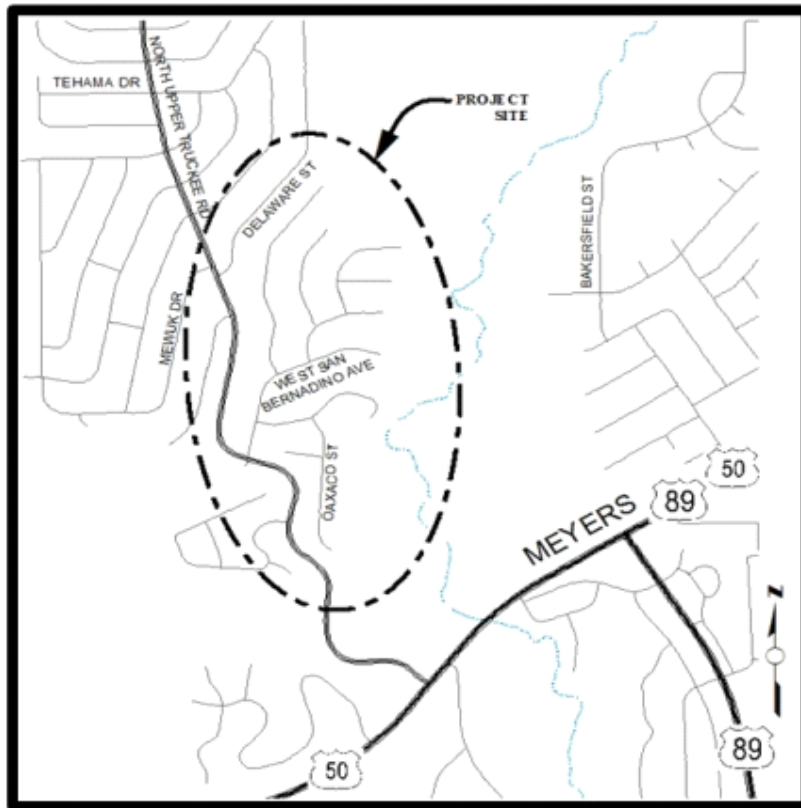
# San Bernardino Water Quality Project

## CIP Project Summary

Project No: 95198 / 36107020

Type: Erosion Control - (EIP)

Supervisor District(s) 5



## LOCATION MAP

NOT TO SCALE

### Project Description:

(Formerly San Bernardino Erosion Control Project) This project will treat eroding cut and fill slopes in County right-of-way. Retain and treat the 25YR-1HR storm. The project also includes revegetation of disturbed areas. It will comply with future Total Maximum Daily Load (TMDL) requirements. Right-of-way acquisitions will be performed if needed.

Expenditures thru 6/30/2017: \$0

Project Initiation Date: 03/28/17



# San Bernardino Water Quality Project

## Financing Plan & Tentative Schedule

Project No: 95198 / 36107020

Type: Erosion Control - (EIP)

Supervisor District(s) 5

*All Figures in Thousands*

Revenue by Funding Source	Prior FY*	FY 18/19	FY 19/20	FY 20/21	FY 21/22	FY 22/23	FY 23/24-27/28**	FY 28/29-37/38**	Total
Tahoe Regional Planning Agency/Air Quality	\$0	\$9	\$0	\$15	\$6	\$0	\$0	\$0	\$29
United States Forest Service Site Improvement Grant	\$0	\$135	\$580	\$7	\$0	\$0	\$0	\$0	\$722
<b>Total</b>	\$0	\$144	\$580	\$22	\$6	\$0	\$0	\$0	\$751

*All Figures in Thousands*

Expenditures	Prior FY*	FY 18/19	FY 19/20	FY 20/21	FY 21/22	FY 22/23	FY 23/24-27/28**	FY 28/29-37/38**	Total
Planning/Env - Consultant	\$0	\$35	\$0	\$0	\$0	\$0	\$0	\$0	\$35
Planning/Env - Staff	\$0	\$50	\$0	\$0	\$0	\$0	\$0	\$0	\$50
Design - Staff	\$0	\$50	\$100	\$0	\$0	\$0	\$0	\$0	\$150
Construction Mgmt - Consultant	\$0	\$0	\$3	\$0	\$0	\$0	\$0	\$0	\$3
Construction Mgmt - Staff	\$0	\$5	\$70	\$10	\$0	\$0	\$0	\$0	\$85
Direct Construction Costs	\$0	\$0	\$400	\$0	\$0	\$0	\$0	\$0	\$400
Env Monitoring - Consultant	\$0	\$1	\$1	\$1	\$1	\$0	\$0	\$0	\$4
Env Monitoring - Staff	\$0	\$3	\$3	\$5	\$5	\$0	\$0	\$0	\$15
Plant Establishment - Consultant	\$0	\$0	\$1	\$1	\$0	\$0	\$0	\$0	\$2
Plant Establishment - Staff	\$0	\$0	\$3	\$5	\$0	\$0	\$0	\$0	\$8
<b>Total</b>	\$0	\$144	\$580	\$22	\$6	\$0	\$0	\$0	\$751

Project Schedule	Prior FY*	FY 18/19	FY 19/20	FY 20/21	FY 21/22	FY 22/23	FY 23/24-27/28**	FY 28/29-37/38**
Planning/Environmental								
Design								
Right Of Way								
Construction								
Environmental Monitoring								

\*Prior FY includes actual revenue and expenditures through 06/30/17, plus amounts estimated through 6/30/18.

\*\*FY 23/24 - 27/28 and FY 28/29 - 37/38 revenue and expenditures are not included for the Tahoe EIP, as it is a five-year program.



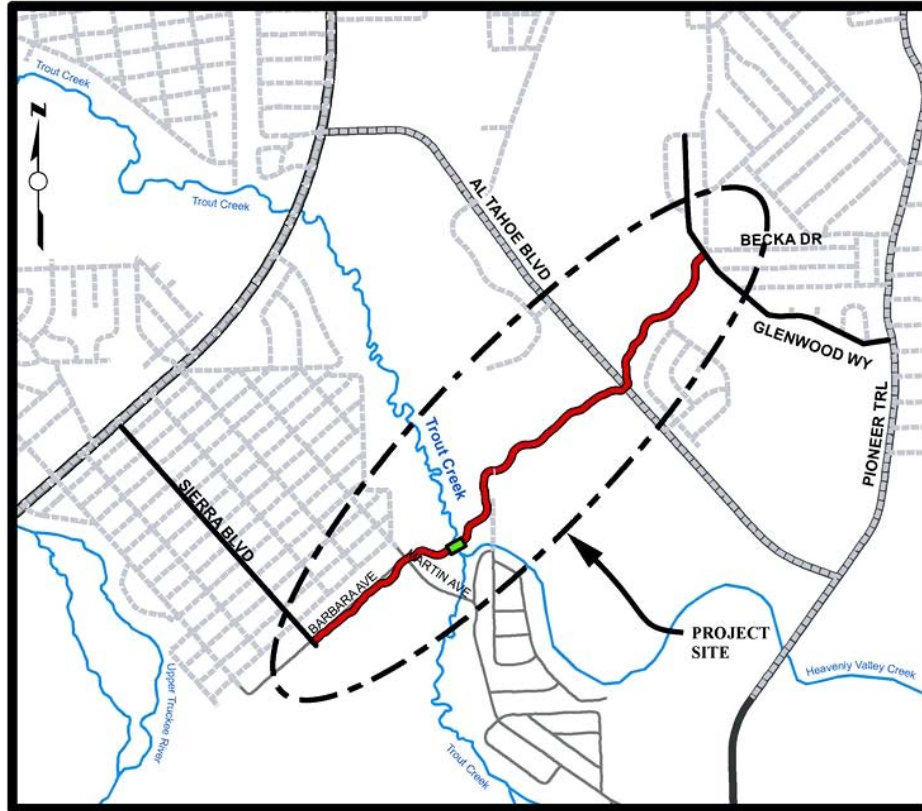
# South Tahoe Greenway Shared Use Trail

## CIP Project Summary

Project No: 95200 / 36107022

Type: Parks & Trails

Supervisor District(s) 5



### LOCATION MAP

NOT TO SCALE

#### **Project Description:**

The South Tahoe Greenway Shared Use Trail Phases 1b & 2 is the 2nd implementation phase of the entire Greenway project. It will cross barriers and close gaps in the bicycle network to form the major north/south connection in South Lake Tahoe. The project constructs 0.95 miles of American Association of State Highway and Transportation Officials (AASHTO) - compliant trail between Glenwood Way and Sierra Boulevard, including 0.77 miles of 10-foot wide asphalt trail and 0.18 miles of elevated boardwalk/bridge. A new bike bridge over Trout Creek, improved local street crossings, and interpretive/wayfinding signage are also part of the project. The first implementation phase of the Greenway, Phase 1a, was constructed in 2015 and is described as a separate EIP project.

Expenditures thru 6/30/2017: \$0

Project Initiation Date: 03/06/18



# South Tahoe Greenway Shared Use Trail

## Financing Plan & Tentative Schedule

Project No: 95200 / 36107022

Type: Parks & Trails

Supervisor District(s) 5

### All Figures in Thousands

Revenue by Funding Source	Prior FY*	FY 18/19	FY 19/20	FY 20/21	FY 21/22	FY 22/23	FY 23/24-27/28**	FY 28/29-37/38**	Total
California Tahoe Conservancy Planning Grant	\$0	\$100	\$1,949	\$1,128	\$5	\$0	\$0	\$0	\$3,182
Caltrans	\$0	\$170	\$719	\$1,039	\$0	\$0	\$0	\$0	\$1,928
Congestion Mitigation and Air Quality Program	\$0	\$0	\$0	\$390	\$0	\$0	\$0	\$0	\$390
<b>Total</b>	\$0	\$270	\$2,668	\$2,557	\$5	\$0	\$0	\$0	\$5,500

### All Figures in Thousands

Expenditures	Prior FY*	FY 18/19	FY 19/20	FY 20/21	FY 21/22	FY 22/23	FY 23/24-27/28**	FY 28/29-37/38**	Total
Planning - Staff	\$0	\$100	\$0	\$0	\$0	\$0	\$0	\$0	\$100
Design - Consultant	\$0	\$107	\$0	\$0	\$0	\$0	\$0	\$0	\$107
Design - Staff	\$0	\$63	\$130	\$0	\$0	\$0	\$0	\$0	\$193
Construction Mgmt - Consultant	\$0	\$0	\$104	\$132	\$0	\$0	\$0	\$0	\$235
Construction Mgmt - Staff	\$0	\$0	\$191	\$174	\$0	\$0	\$0	\$0	\$365
Direct Construction Costs	\$0	\$0	\$2,243	\$2,242	\$0	\$0	\$0	\$0	\$4,485
Env Monitoring - Staff	\$0	\$0	\$0	\$10	\$5	\$0	\$0	\$0	\$15
<b>Total</b>	\$0	\$270	\$2,668	\$2,557	\$5	\$0	\$0	\$0	\$5,500

Project Schedule	Prior FY*	FY 18/19	FY 19/20	FY 20/21	FY 21/22	FY 22/23	FY 23/24-27/28**	FY 28/29-37/38**
Planning/Environmental								
Design								
Right Of Way								
Construction								
Environmental Monitoring								

\*Prior FY includes actual revenue and expenditures through 06/30/17, plus amounts estimated through 6/30/18.

\*\*FY 23/24 - 27/28 and FY 28/29 - 37/38 revenue and expenditures are not included for the Tahoe EIP, as it is a five-year program.



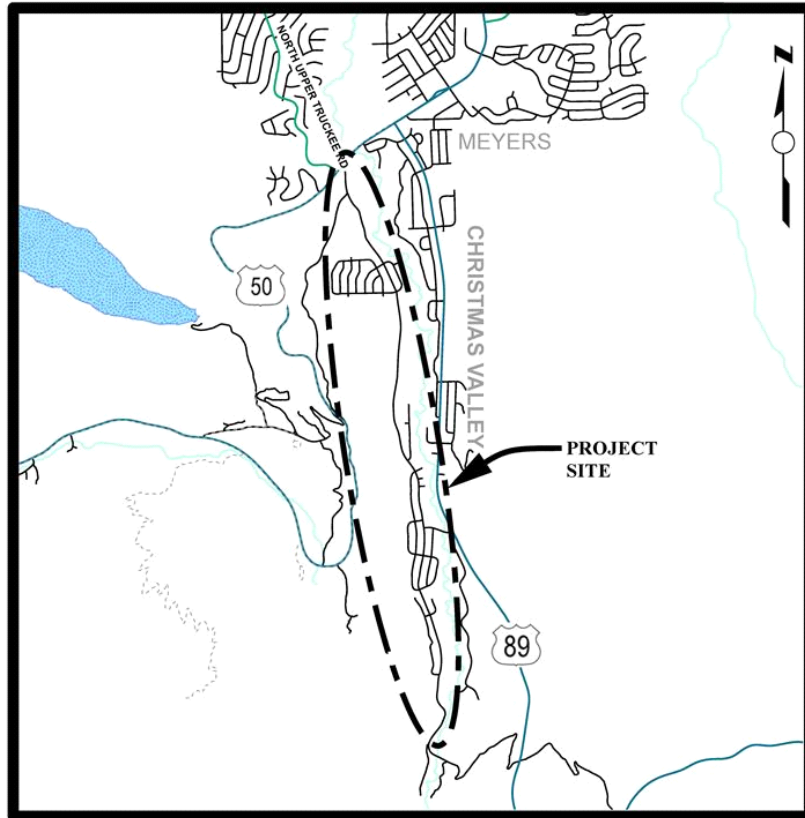
# South Upper Truckee I Erosion Control Project

## CIP Project Summary

Project No: 95168 / 36107013

Type: Erosion Control - (EIP)

Supervisor District(s) 5



## LOCATION MAP

NOT TO SCALE

### Project Description:

Treat eroding cut and fill slopes in County right-of-way. Reduce the very fine and fine sediment from the urban watersheds. Revegetation of disturbed areas. Install curb and gutter, rock-lined channels, sediment basins. Restore SEZ. Perform right-of-way acquisitions. This Project will most likely be split into several phases. It is anticipated that other grant funding will be available in the future through EIP grant funding programs available to the County.

Expenditures thru 6/30/2017: \$141,709

Project Initiation Date: 12/06/10





# South Upper Truckee I Erosion Control Project

## Financing Plan & Tentative Schedule

Project No: 95168 / 36107013

Type: Erosion Control - (EIP)

Supervisor District(s) 5

### All Figures in Thousands

Revenue by Funding Source	Prior FY*	FY 18/19	FY 19/20	FY 20/21	FY 21/22	FY 22/23	FY 23/24-27/28**	FY 28/29-37/38**	Total
Erosion Control Discretionary	(\$1)	\$0	\$0	\$0	\$0	\$0	\$0	\$0	(\$1)
Tahoe Regional Planning Agency/Stream Environmental Zone	\$65	\$0	\$0	\$0	\$0	\$12	\$0	\$0	\$77
Tahoe Regional Planning Agency/Water Quality	\$39	\$0	\$0	\$0	\$0	\$1	\$0	\$0	\$40
United States Forest Service Planning Grant	\$0	\$0	\$0	\$50	\$115	\$5	\$0	\$0	\$170
United States Forest Service Site Improvement Grant	\$39	\$0	\$0	\$0	\$0	\$280	\$0	\$0	\$319
<b>Total</b>	<b>\$142</b>	<b>\$0</b>	<b>\$0</b>	<b>\$50</b>	<b>\$115</b>	<b>\$298</b>	<b>\$0</b>	<b>\$0</b>	<b>\$605</b>

### All Figures in Thousands

Expenditures	Prior FY*	FY 18/19	FY 19/20	FY 20/21	FY 21/22	FY 22/23	FY 23/24-27/28**	FY 28/29-37/38**	Total
Planning/Env - Consultant	\$0	\$0	\$0	\$0	\$0	\$0	\$0	\$0	\$0
Planning/Env - Staff	\$8	\$0	\$0	\$50	\$0	\$0	\$0	\$0	\$58
Design - Consultant	\$0	\$0	\$0	\$0	\$0	\$0	\$0	\$0	\$0
Design - Staff	\$20	\$0	\$0	\$0	\$100	\$0	\$0	\$0	\$120
Right of Way - Consultant	\$0	\$0	\$0	\$0	\$0	\$0	\$0	\$0	\$0
Right of Way - Staff	\$0	\$0	\$0	\$0	\$10	\$0	\$0	\$0	\$10
Construction Mgmt - Consultant	\$46	\$0	\$0	\$0	\$0	\$0	\$0	\$0	\$46
Construction Mgmt - Staff	\$39	\$0	\$0	\$0	\$0	\$75	\$0	\$0	\$114
Direct Construction Costs	\$16	\$0	\$0	\$0	\$0	\$200	\$0	\$0	\$216
Env Monitoring - Consultant	\$1	\$0	\$0	\$0	\$0	\$1	\$0	\$0	\$2
Env Monitoring - Staff	\$3	\$0	\$0	\$0	\$5	\$10	\$0	\$0	\$18
Plant Establishment - Consultant	\$0	\$0	\$0	\$0	\$0	\$2	\$0	\$0	\$2
Plant Establishment - Staff	\$7	\$0	\$0	\$0	\$0	\$10	\$0	\$0	\$17
<b>Total</b>	<b>\$142</b>	<b>\$0</b>	<b>\$0</b>	<b>\$50</b>	<b>\$115</b>	<b>\$298</b>	<b>\$0</b>	<b>\$0</b>	<b>\$605</b>

Project Schedule	Prior FY*	FY 18/19	FY 19/20	FY 20/21	FY 21/22	FY 22/23	FY 23/24-27/28**	FY 28/29-37/38**
Planning/Environmental								
Design								
Right Of Way								
Construction								
Environmental Monitoring								

\*Prior FY includes actual revenue and expenditures through 06/30/17, plus amounts estimated through 6/30/18.

\*\*FY 23/24 - 27/28 and FY 28/29 - 37/38 revenue and expenditures are not included for the Tahoe EIP, as it is a five-year program.



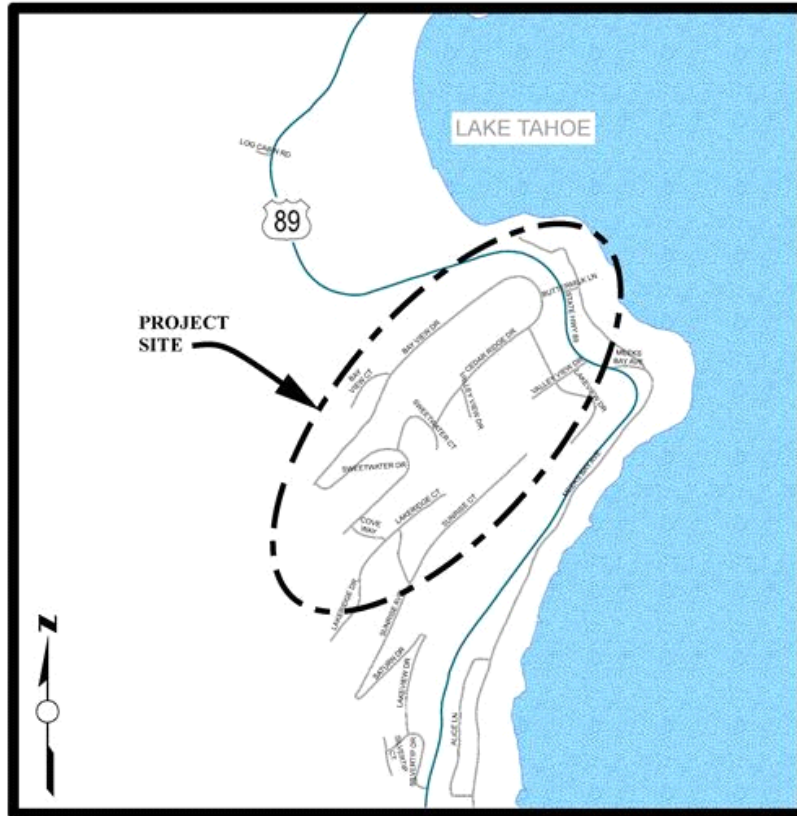
# Tahoe Hills Erosion Control Project

## CIP Project Summary

Project No: 95171 / 36107005

Type: Erosion Control - (EIP)

Supervisor District(s) 5



### LOCATION MAP

NOT TO SCALE

#### **Project Description:**

The Tahoe Hills Erosion Control Project is within the Tahoe Hills subdivision which is bordered by Highway 89 to the north and south, and by Lake Tahoe to the east . The Project area encompasses County ROW, Caltrans ROW, California Tahoe Conservancy, United States Forest Service, and privately owned property. The main goal of the Project is to reduce the very fine and fine sediment from the Tahoe Hills subdivision which will ultimately improve the clarity of Lake Tahoe.

Expenditures thru 6/30/2017: \$745,540

Project Initiation Date: 11/15/09



# Tahoe Hills Erosion Control Project

## Financing Plan & Tentative Schedule

Project No: 95171 / 36107005

Type: Erosion Control - (EIP)

Supervisor District(s) 5

**All Figures in Thousands**

Revenue by Funding Source	Prior FY*	FY 18/19	FY 19/20	FY 20/21	FY 21/22	FY 22/23	FY 23/24-27/28**	FY 28/29-37/38**	Total
California Tahoe Conservancy Planning Grant	\$8	\$0	\$0	\$0	\$0	\$0	\$0	\$0	\$8
Tahoe Regional Planning Agency/Water Quality	\$19	\$0	\$0	\$0	\$0	\$0	\$0	\$0	\$19
United States Forest Service Planning Grant	\$289	\$0	\$0	\$0	\$0	\$0	\$0	\$0	\$289
United States Forest Service Site Improvement Grant	\$455	\$7	\$0	\$0	\$0	\$0	\$0	\$0	\$462
<b>Total</b>	<b>\$771</b>	<b>\$7</b>	<b>\$0</b>	<b>\$0</b>	<b>\$0</b>	<b>\$0</b>	<b>\$0</b>	<b>\$0</b>	<b>\$778</b>

**All Figures in Thousands**

Expenditures	Prior FY*	FY 18/19	FY 19/20	FY 20/21	FY 21/22	FY 22/23	FY 23/24-27/28**	FY 28/29-37/38**	Total
Planning/Env - Consultant	\$2	\$0	\$0	\$0	\$0	\$0	\$0	\$0	\$2
Planning/Env - Staff	\$8	\$0	\$0	\$0	\$0	\$0	\$0	\$0	\$8
Design - Consultant	\$20	\$0	\$0	\$0	\$0	\$0	\$0	\$0	\$20
Design - Staff	\$211	\$0	\$0	\$0	\$0	\$0	\$0	\$0	\$211
Right of Way - Acquisition	\$0	\$0	\$0	\$0	\$0	\$0	\$0	\$0	\$0
Right of Way - Consultant	\$0	\$0	\$0	\$0	\$0	\$0	\$0	\$0	\$0
Right of Way - Staff	\$5	\$0	\$0	\$0	\$0	\$0	\$0	\$0	\$5
Construction Mgmt - Consultant	\$2	\$0	\$0	\$0	\$0	\$0	\$0	\$0	\$2
Construction Mgmt - Staff	\$139	\$0	\$0	\$0	\$0	\$0	\$0	\$0	\$139
Direct Construction Costs	\$330	\$0	\$0	\$0	\$0	\$0	\$0	\$0	\$330
Env Monitoring - Consultant	\$2	\$0	\$0	\$0	\$0	\$0	\$0	\$0	\$2
Env Monitoring - Staff	\$37	\$0	\$0	\$0	\$0	\$0	\$0	\$0	\$37
Plant Establishment - Consultant	\$0	\$0	\$0	\$0	\$0	\$0	\$0	\$0	\$0
Plant Establishment - Staff	\$14	\$7	\$0	\$0	\$0	\$0	\$0	\$0	\$21
<b>Total</b>	<b>\$771</b>	<b>\$7</b>	<b>\$0</b>	<b>\$0</b>	<b>\$0</b>	<b>\$0</b>	<b>\$0</b>	<b>\$0</b>	<b>\$778</b>

Project Schedule	Prior FY*	FY 18/19	FY 19/20	FY 20/21	FY 21/22	FY 22/23	FY 23/24-27/28**	FY 28/29-37/38**
Planning/Environmental								
Design								
Right Of Way								
Construction								
Environmental Monitoring								

\*Prior FY includes actual revenue and expenditures through 06/30/17, plus amounts estimated through 6/30/18.

\*\*FY 23/24 - 27/28 and FY 28/29 - 37/38 revenue and expenditures are not included for the Tahoe EIP, as it is a five-year program.



# Cost Estimate by Phase Summary

## Tahoe

*All Figures In Thousands*

	<b>Prior*</b>	<b>18/19</b>	<b>19/20</b>	<b>20/21</b>	<b>21/22</b>	<b>22/23</b>	<b>23/24- 27/28</b>	<b>28/29- 37/38</b>	<b>Total</b>
<i>Construction Mgmt - Consultant</i>	132	30	116	134	393	108	0	0	913
<i>Construction Mgmt - Staff</i>	1,037	283	455	925	634	650	0	0	3,985
<i>Design - Consultant</i>	303	417	265	476	35	0	0	0	1,496
<i>Design - Staff</i>	1,845	492	621	710	998	0	0	0	4,665
<i>Design Engineering &amp; Admin - Consultant</i>	0	0	0	0	0	0	0	0	0
<i>Design Engineering &amp; Admin - Staff</i>	53	0	0	0	0	0	0	0	53
<i>Direct Construction Costs</i>	4,075	1,352	3,343	7,492	5,806	3,646	0	0	25,714
<i>Env Monitoring - Consultant</i>	42	10	5	3	8	4	0	0	71
<i>Env Monitoring - Staff</i>	205	40	32	23	55	40	0	0	393
<i>Planning - Staff</i>	0	100	0	10	0	0	0	0	110
<i>Planning/Env - Consultant</i>	243	420	265	268	6	0	0	0	1,202
<i>Planning/Env - Staff</i>	743	241	251	273	13	0	0	0	1,520
<i>Plant Establishment - Consultant</i>	14	33	6	7	23	17	0	0	100
<i>Plant Establishment - Staff</i>	67	43	25	33	126	158	0	0	451
<i>Right of Way - Acquisition</i>	0	25	0	0	19	0	0	0	44
<i>Right of Way - Consultant</i>	1	0	0	40	10	0	0	0	51
<i>Right of Way - Staff</i>	33	0	0	55	40	0	0	0	128
<i>Survey - Staff</i>	0	0	0	0	0	0	0	0	0
<b>Totals</b>	<b>8,793</b>	<b>3,483</b>	<b>5,383</b>	<b>10,450</b>	<b>8,164</b>	<b>4,622</b>	<b>0</b>	<b>0</b>	<b>40,895</b>



# Revenue Source Summary

## Tahoe

*All Figures In Thousands*

	<i>Prior*</i>	<i>18/19</i>	<i>19/20</i>	<i>20/21</i>	<i>21/22</i>	<i>22/23</i>	<i>23/24- 27/28</i>	<i>28/29- 37/38</i>	<i>Total</i>
Anticipated Grant	0	0	0	0	0	0	0	0	0
Bicycle Transportation Account (BTA)	0	0	0	24	49	0	0	0	73
CA Integrated Waste Mgmt Board (CIWMB)	0	0	0	0	0	0	0	0	0
California Department of Fish & Wildlife	0	0	0	350	1,100	20	0	0	1,470
California Tahoe Conservancy Planning Grant	382	198	2,086	1,268	122	0	0	0	4,056
California Tahoe Conservancy Site Improvement Grant	1,126	377	572	110	927	1,485	0	0	4,596
Caltrans	0	170	719	1,039	0	0	0	0	1,928
Congestion Mitigation and Air Quality Program	0	527	296	765	565	450	0	0	2,604
County Service Area (CSA 5)	200	0	0	0	0	0	0	0	200
Erosion Control Discretionary	-1	0	0	0	0	0	0	0	-1
Federal Disaster Funding	562	778	0	0	0	0	0	0	1,340
Federal Lands Access Program (FLAP)	0	0	0	355	2,394	0	0	0	2,749
General Fund	800	0	0	0	0	0	0	0	800
Highway Safety Improvement Program	0	0	0	2,933	0	0	0	0	2,933
Miscellaneous Reimbursement	1	0	0	0	0	0	0	0	1
Road Fund/Discretionary	26	44	0	46	310	0	0	0	426
Road Maintenance & Rehabilitation (RMRA)	0	36	0	0	0	0	0	0	36
RSTP Exchange Funds-TRPA	1	299	201	2,420	450	802	0	0	4,173
Safe Routes to School - Federal	0	0	60	300	0	0	0	0	360
Safe Routes to School - State	0	0	0	0	0	0	0	0	0
South Tahoe Public Utility District	10	65	0	0	0	0	0	0	75
State Disaster Relief	79	131	0	0	0	0	0	0	209
State Water Resources Control Board	197	15	135	0	0	0	0	0	347
Tahoe Regional Planning Agency/Air Quality	60	58	139	243	392	21	0	0	912
Tahoe Regional Planning Agency/Stream Environmental Zone	504	32	0	40	100	117	0	0	792
Tahoe Regional Planning Agency/Water Quality	341	14	41	21	396	1	0	0	813
To Be Determined	0	0	0	0	0	0	0	0	0
United States Forest Service Planning Grant	1,582	0	0	50	514	430	0	0	2,576
United States Forest Service Site Improvement Grant	2,922	742	1,133	487	845	1,298	0	0	7,427
<b>Totals</b>	<b>8,793</b>	<b>3,483</b>	<b>5,383</b>	<b>10,450</b>	<b>8,164</b>	<b>4,622</b>	<b>0</b>	<b>0</b>	<b>40,895</b>