


**File No. S99-0001-R**  
**Location Map**

 Site

0 0.5 1 Miles



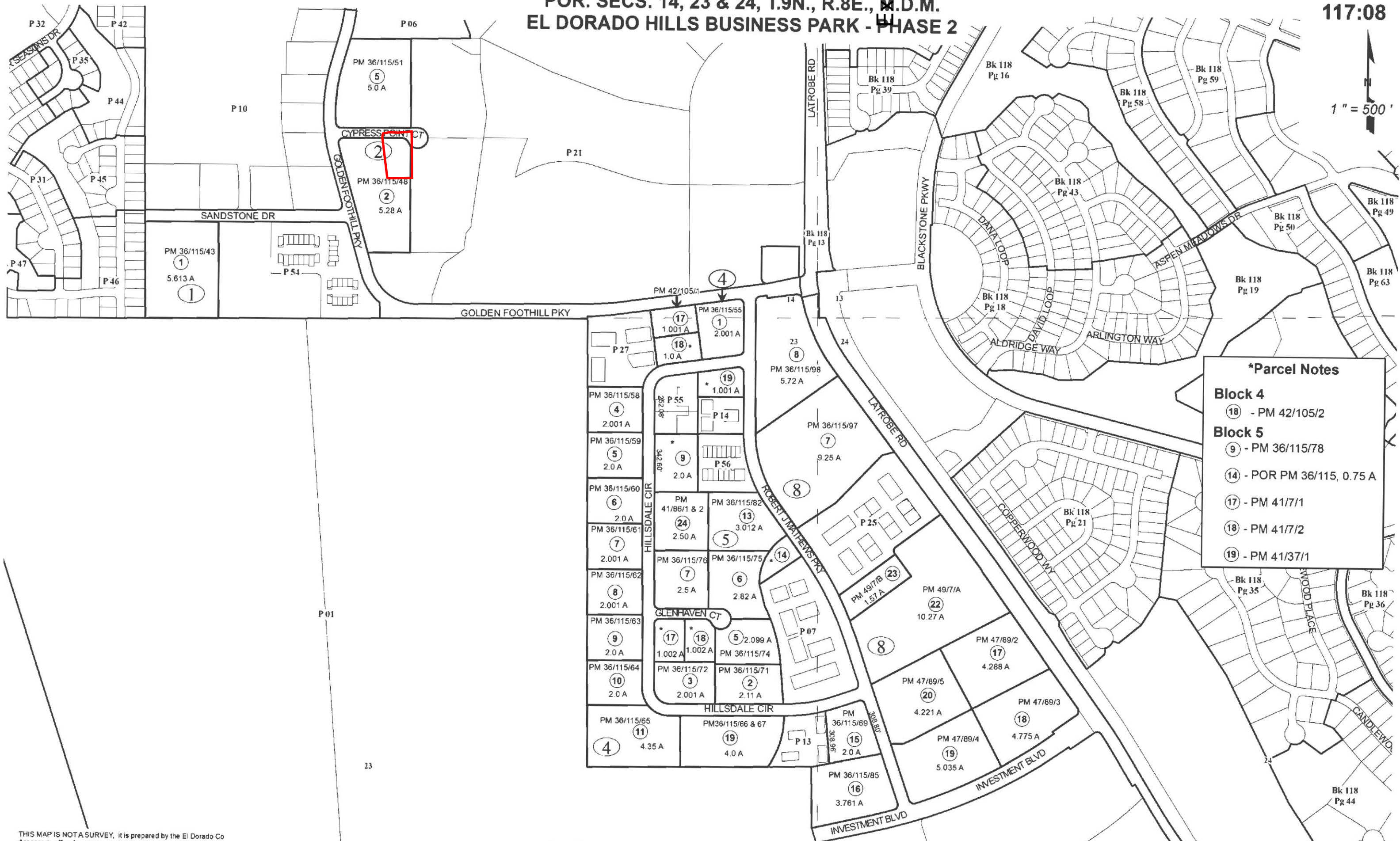
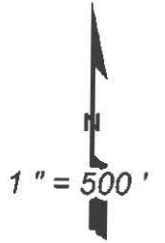
Phoenix School  
Special Use Permit Revision



**Exhibit A**

POR. SECS. 14, 23 & 24, T.9N., R.8E., S.D.M.  
**EL DORADO HILLS BUSINESS PARK - PHASE 2**

117:08



**\*Parcel Notes**

<b>Block 4</b>
⑱ - PM 42/105/2
<b>Block 5</b>
⑨ - PM 36/115/78
⑭ - POR PM 36/115, 0.75 A
⑰ - PM 41/7/1
⑱ - PM 41/7/2
⑲ - PM 41/37/1

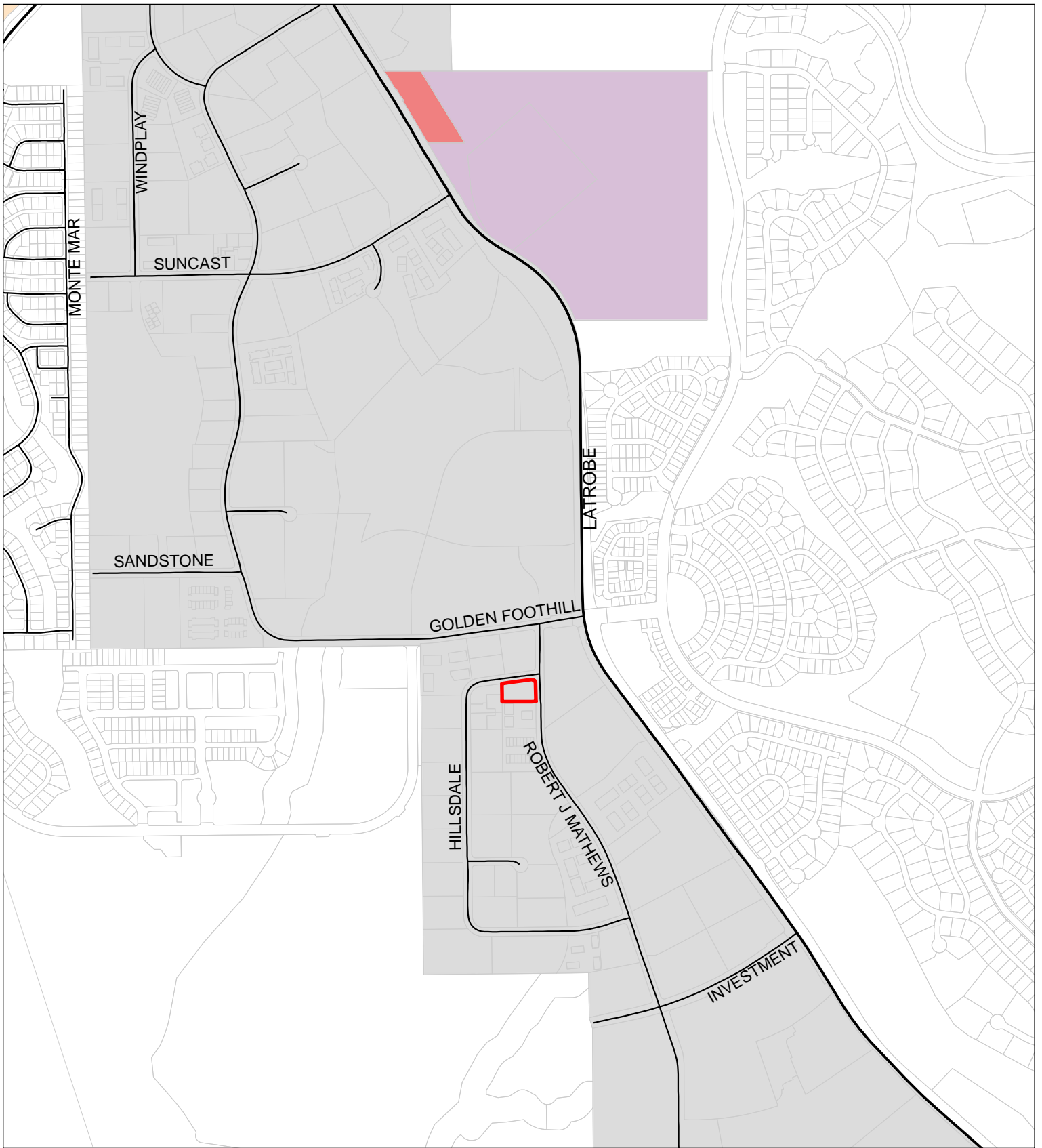
THIS MAP IS NOT A SURVEY. It is prepared by the El Dorado Co Assessor's office for assessment purposes only. Area calculations and characteristics are not guaranteed. Users should verify items such as dimensions and acreage.

**Acreages Are Estimates**

Adjacent Map Pages Shown in Grey Text  
 Assessor's Block Numbers Shown in Ellipses  
 Assessor's Parcel Numbers Shown in Circles

Rev. JUN 27, 2014

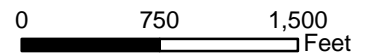
Assessor's Map Bk. 117 - Pg. 08  
 County of El Dorado, CA

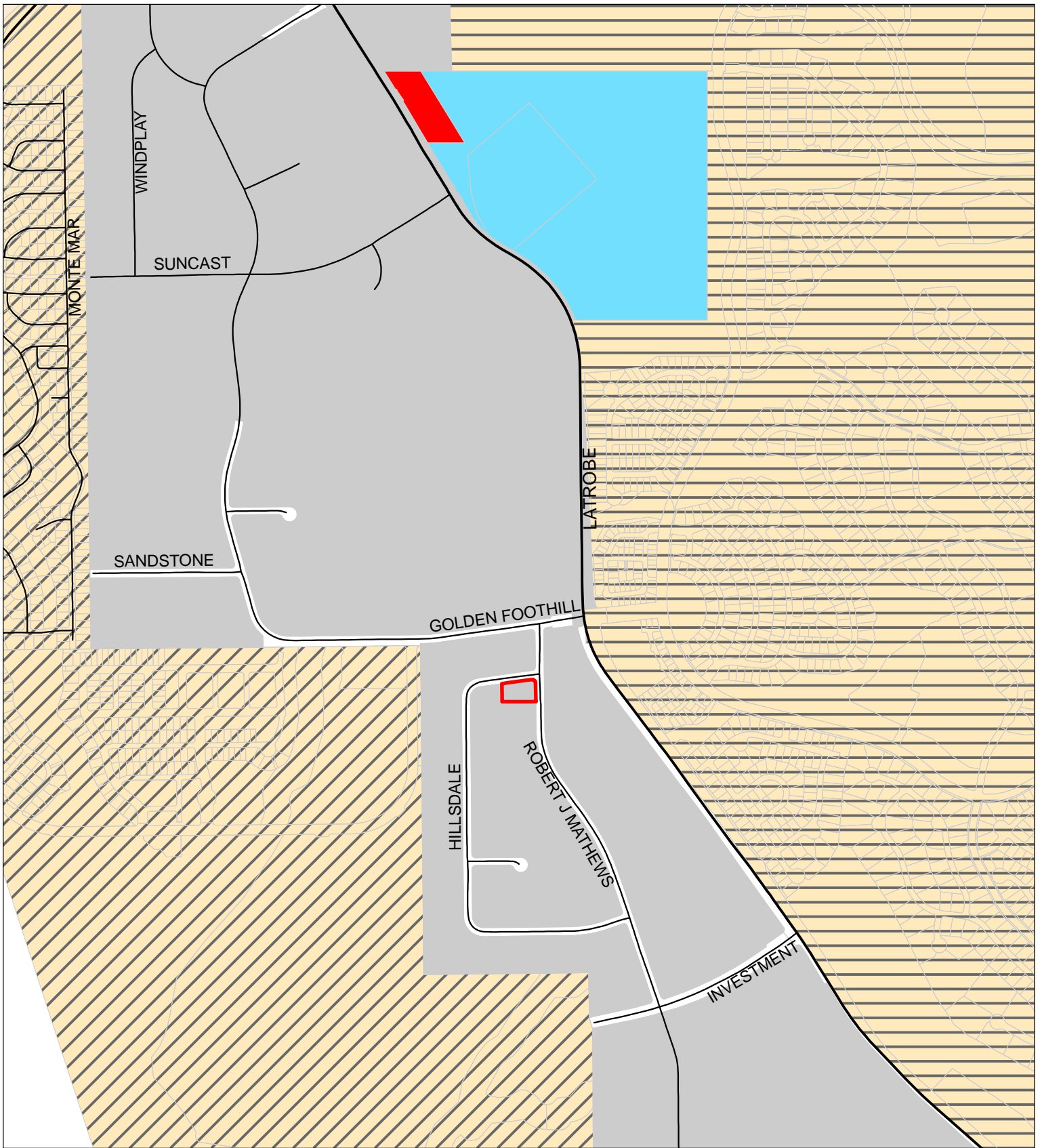


**File No. S99-0001-R**  
**Land Use Map**

Phoenix School  
 Special Use Permit Revision

-  Site
-  Adopted Plan
-  Commercial
-  Medium Density Residential
-  Public Facilities
-  Research & Development

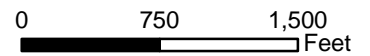




**File No. S99-0001-R  
Zoning Map**

Phoenix School  
Special Use Permit Revision

- Site
- CC = Commercial Community
- OS = Open Space
- R&D = Reasearch & Devepoment
- R1A = Residential 1 Acre
- CC-SP = Carson Creek Specific Plan
- VV-SP = Valley View Specific Plan
- TC = Transportation Corridor



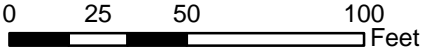
**Exhibit D**



ROBERT J MATHEWS

**File No. S99-0001-R**  
**Aerial Map**

 Site



Phoenix School  
Special Use Permit Revision



# Exhibit E