


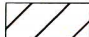






Legend

-  OWMP Boundary
-  Community Centers
-  Rural Regions
-  State and Federal Lands
-  Highway
-  Arterial Road

Revised Priority Conservation Areas

-  ¹ Priority Conservation Area Without BOW and BOP
-  Remainder of 5 WHR Oak Woodland Types

Total Oak Woodland Priority Conservation Areas - 96,305 Acres

Total of 5 CWHR Oak Woodland Types - 248,857 Acres

¹ Green designation includes Large Expanses of Oak Woodlands, all Valley Oak Woodlands, and undeveloped parcels with oak woodlands that are 10 acres or larger, excluding areas with commercial, industrial, state, and federal lands.

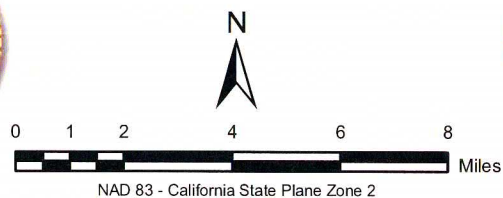
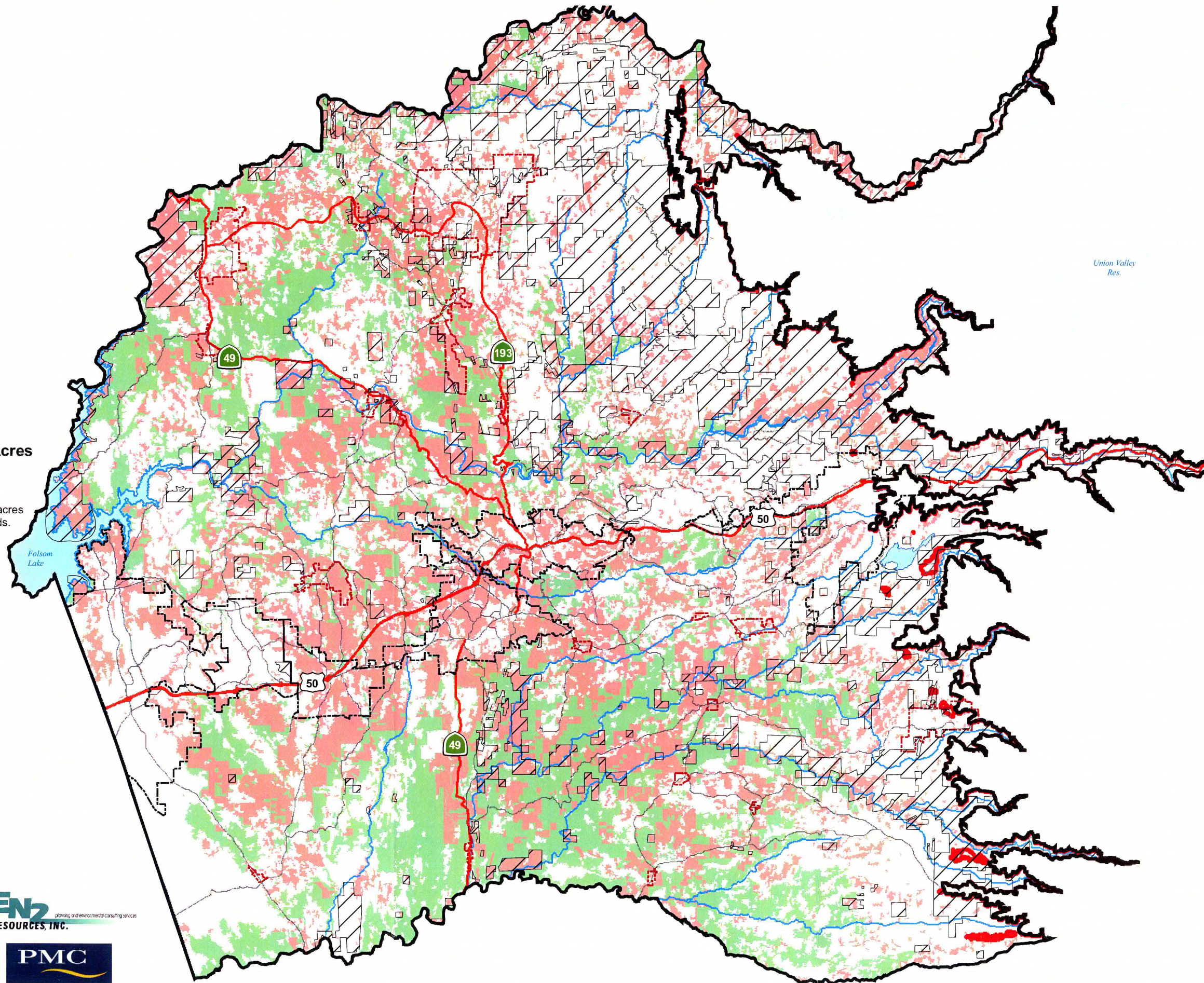


Figure J-7. Revised Priority Conservation Areas (Without Corridors) without Commercial or Industrial Lands

PUBLIC REVIEW DRAFT