

**ATTACHMENT A**

**El Dorado County**  
**Brief Description of the Types of Traffic Impact**  
**and Developer Agreement Fees**  
**As required by Government Code Section 66006 (b) (1) (A)**

The purpose of the traffic impact fee (TIF), formerly the traffic impact mitigation (TIM) fee, is to finance capital transportation/circulation improvements, which are related directly to the incremental traffic/vehicle burden imposed upon the County's transportation/circulation system by new development in the unincorporated west slope of El Dorado County through 2041. Improvements funded by the TIF Program include, but are not limited to, new roadways, roadway widenings, roadway intersection improvements, operational and safety improvement, bridge replacement and rehabilitation, and transit. Fees are derived by establishing that there is a reasonable relationship between the need for the described public facilities and the impacts of the types of development being charged.

The TIM/TIF program underwent two fee schedule changes in Fiscal year 2020-21 (FY20-21). The second change included a major update to the structure of the zones and their names along with their boundaries. Further description of the changes is below. The three fee schedules and their effective dates are provided in Attachment B.

**General Plan Traffic Impact Fee (TIF) Program**

The General Plan Traffic Impact Fee (TIF) Program addresses the need to fund a road system capable of achieving the traffic level of service standards of the General Plan. This fee program succeeds the major revision to the 2017 General Plan Traffic Impact Mitigation (TIM) Fee Program (adopted December 6, 2016) as well as all subsequent fee programs.

The original TIM Fee schedule effective in FY20-21 was adopted by Resolution no. 072-2019.

An updated fee schedule went into effect on August 24, 2020 by Resolution no. 095-2020.

The third fee schedule went into effect on February 8, 2021 by Resolution no. 196-2020.

As a result of this final resolution (196-2020), the program name was changed from the TIM Fee Program to the TIF program and the new/updated TIF Funds are as follows:

1. TIF Zone A - Acct 3670719 (beginning February 8, 2021; formerly TIM Zones 1, 4, 5, 6 & 7)
2. TIF Zone B - Acct 3670720 (beginning February 8, 2021; formerly TIM Zones 2 & 3)
3. TIF Zone C - Acct 3670715 (formerly TIM Zone 8 El Dorado Hills)
4. TIF Zone C Silva Valley Interchange - Acct 3670716 (formerly TIM Zone 8 Silva Valley Interchange)
5. TIF Zone C HWY 50 - Acct 3670718 (formerly TIM Zone 8 HWY 50)

(TIM Zones 1-7 Acct 3670717: Although funds stopped being deposited into this account after February 7, 2021, existing monies will continue to fund projects until it is exhausted.)

Another update that went into effect from the changes in Resolution No. 196-2020 is described below:

- ✓ TIF Zone A - The Rural Fee Zone (formerly Zones 1 Grizzly Flats/Quintette/West of Echo Summit, Zone 4 El Dorado/Diamond Springs, Zone 5 Placerville/Camino/Pollock Pines, Zone 6 Pleasant Valley, and Zone 7 Fairplay/Latrobe/Mt. Aukum)

- ✓ TIF Zone B - Cameron Park and Shingle Springs (formerly Zones 2 Cameron Park and 3 Shingle Springs)
- ✓ TIF Zone C – El Dorado Hills Area (formerly Zone 8)

In all the zones, there is a specified local component to the fee and a specified Hwy 50 component. The local component of fees collected from TIM Zones 1-7 (up until February 7, 2021) were pooled for use on future projects in any of these zones, but the amount used in each zone should ultimately approximate the amount of fees collected from that zone. Revenues collected were deposited into TIM Zones 1-7 (Acct 3670717). On February 8, 2021 revenues collected are now being deposited into TIF Zones A and B, which are collected into Accounts 3670719 and 3670720 respectively.

Local funds collected from TIF Zone C (formerly TIM Zone 8 up until February 7, 2021) are held separately due to pre-existing agreements and due to development in this area under the previously created El Dorado Hills/Salmon Falls Area Road Improvement Fee (RIF) program. Revenues collected are deposited into TIF – Zone C Hwy 50 (Acct 3670715) at 70% and into TIF – Zone C Silva Valley Interchange (Acct 3670716) at 30%.

Highway 50 fees collected from all the zones are pooled and used on projects along Highway 50. Revenues collected are deposited into TIF HWY 50 (Acct 3670718; formerly TIM HWY 50).

Fees were established by estimating projected costs of future projects and spreading those costs among the eight zones based on traffic volumes from each zone (see map, Figure 1a). Costs were divided by future growth projections to determine fees. As a part of Resolution No. 196-2020, the spreading of the costs are now among the three zones based on traffic volumes from each zone (see map, Figure 1b). Costs are divided by future growth projections to determine fees. Refer to Attachment B for list of the TIF fee breakdown.

More information about the various programs can be found in El Dorado County Ordinance Nos. 5044 and 5045, and the enabling Board Resolutions Nos. 021-2012, 191-2016, 001-2017, 189-2016, 190-2016, 191-2016, 072-2019, and 095-2020.

#### **BAR J Trust Road Impact Fee**

Established by Resolution 304-99 on December 14, 1999, the Country Club Drive-Tierra De Dios Area of Benefit (see map, figure 2) is intended to reimburse Bell Ranch Properties, LTD, the Developer that constructed improvements and realigned Country Club Drive and Tierra De Dios in the Cameron Park area. The associated fee is based on the apportionment of costs to benefiting properties as defined in the Engineer's Report for the Area of Benefit. These funds are collected by the County and are deposited into the Bar J Trust account (7936465), then disbursed to Bell Ranch Properties, LTD as reimbursement for the constructed improvements. Refer to Attachment B for details of fee calculation.

#### **Marble Valley Road – Road Impact Fee**

Established by Resolution 118-2000 on May 2, 2000, the Marble Valley Road Area of Benefit (see map, figure 3) and its associated impact fee, are intended to be used to reimburse Developer(s) that build the future roadway known as Marble Valley Road. The fee, which is collected with the building permit application, is based on the percentage of peak hour trips allocated to the property as detailed in the Traffic Analysis for Marble Valley Road, an appendix of the Engineer's Report for the Area of Benefit. These funds are collected by the County and are deposited into the Marble Valley Road Trust account (7936466). Refer to Attachment B for details of fee calculation.

### **Alto, LLC Development Agreement Community Benefit Fee**

The Alto development is a tentative subdivision for twenty-three (23) residential lots on an eighty-one (81) acre site identified as Assessor's Parcel Number 126-100-19 approved on May 5, 2009. On June 24, 2014 the Board approved Ordinance 5009 approving Development Agreement (DA) 13-0001 with Alto, LLC. Section 4.01 of the DA required the Alto, LLC to contribute \$30,000.00 for the County to use at its discretion toward a public benefit for the community. County received \$30,000.00 on July 25, 2014 to be used for potential road improvements in the Green Valley Road area. A map (figure 4) depicts the proposed Alto development.

Fees were deposited into the Road Construction Improvement In-Lieu fund (3670704). Note that the interest collected applies to the entire fund which includes Alto, LLC among other developments. The asterisk in Attachment C identifies the interest which applies to the Alto portion only.

### **Frontage Improvement Deferral Program Fee**

On March 16, 2021, the Board approved Resolution 009-2021, Chapter 12.09 of the El Dorado County Frontage Improvement Ordinance. The resolution allows the County Engineer to require concurrent construction of frontage improvements such as curb, gutter, sidewalk and conform paving. Agreements between the County and developers are known as Deferred Frontage Improvement Agreements (DFIA) and fees paid as a part of a Frontage Improvement Deferral Program (FIDP). Per Government Code Section 66006, the County is required to deposit, invest, account for, and expend the fees in a prescribed manner.

On March 18, 2021 the County entered into a DFIA with Serrano Associates, LLC in connection with the Bass Lake Road improvement in Serrano Village J7 (PD18-0005/TM18-1536). As a part of the DFIA, the in-lieu amount of \$76,907.88 for DOT Serrano Village J7 (for Bass Lake Road) was collected and deposited into FIDP account number 3670721 (see map, figure 5).

On March 18, 2021 the County entered into a DFIA with Serrano Associates, LLC in connection with the Bass Lake Road/Bridlewood Drive Intersection (PD18-0005/TM18-1536). The DFIA stated that a total of \$200,000 must be paid to the County and used as a "fair share" contribution. Payments will be made in 64 equal installments of \$3,077 and one final payment of \$3,072, for a total of 65 payments. Reimbursement will be made in accordance with conditions of the DFIA. Funds are deposited into the Bass Lake Road/Bridlewood Drive Intersection FIDP account number 3670722 (see map, figure 5).

### **Bass Lake Hills Specific Plan – Public Facilities Financing Plan Fee**

The Bass Lake Hills Specific Plan (BLHSP) was established November 7, 1995 and approved in 1996 for a 20-year agreement. It consists of 1,414 acres in size and includes 88 individual parcels ranging in size from 1.1 to 96.4 acres. The BLHSP Public Facilities Financing Plan (PFFP) fee was adopted on June 8, 2004. In phases 1, 1A, 2, and 3 of the development, 1,404 units were subject to the PFFP fee. The fee was established to finance the backbone infrastructure and other public facilities for the BLHSP.

In April 2016 the Planning Commission approved Tentative Map and Planned Development revisions (Hawk view, APN: 103-060-01), (Bell Ranch, APN: 119-020-52), and (Bell Woods, APN: 108-010-07) supported by corresponding 10-year Development Agreements to replace the expired original BLHSP Development Agreement that was approved in 1996.

On February 23, 2021 Resolution 218-2021 was adopted by the Board to approve the 2020 BLHSP and PFFP fee, which replaced the former BLHSP (see map, figure 6).

Per Government Code Section 66006, the County is required to deposit, invest, account for, and expend the fees in a prescribed manner. The BLHSP PFFP fee is collected from new developments within the BLHSP at the time a building permit is issued; however, use of these funds may need to wait until a sufficient fund balance can be accrued.

Fees are deposited into the Bass Lake Hills PFFP fund (7936467). The Administration Fee will be deposited into its own fund (3670727) beginning in FY 2021-22. Refer to Attachment B for details of fee calculation.

### **Intelligent Transportation System**

In 2006/07, the Department of Transportation (Transportation) hired a consultant to draft an Intelligent Traffic System (ITS) Master Plan. A Draft ITS Master Plan for El Dorado County was prepared in August of 2007. However, the draft plan was never approved or accepted by the County or the El Dorado County Transportation Commission (EDCTC).

In 2018, Transportation Director, Rafael Martinez presented some information to the Board regarding a pilot program for ITS in the El Dorado Hills area. As the proposed ITS improvements are over and above the identified impacts of currently approved projects, Transportation cannot require new developments to pay for the ITS improvements through the TIF Program.

Transportation has developed a methodology for allocating a “fair share” amount per Dwelling Unit Equivalent (DUE) to future growth in the region. This methodology is based on the growth in vehicle miles travelled (VMT) in this region from 2018 to 2040 and allocates 78.8% of this growth to traffic originating or terminating in the El Dorado Hills region (defined as TIM Fee District 8; see map, figure 7).

This being the case, as large developments go through map approval, they may choose to pay the project’s fair share voluntary fee contribution with each final map application, to the El Dorado County Intelligent Transportation System (ITS) Program. The voluntary fee may be reimbursable, if the El Dorado County ITS Program is approved by the Board of Supervisors.

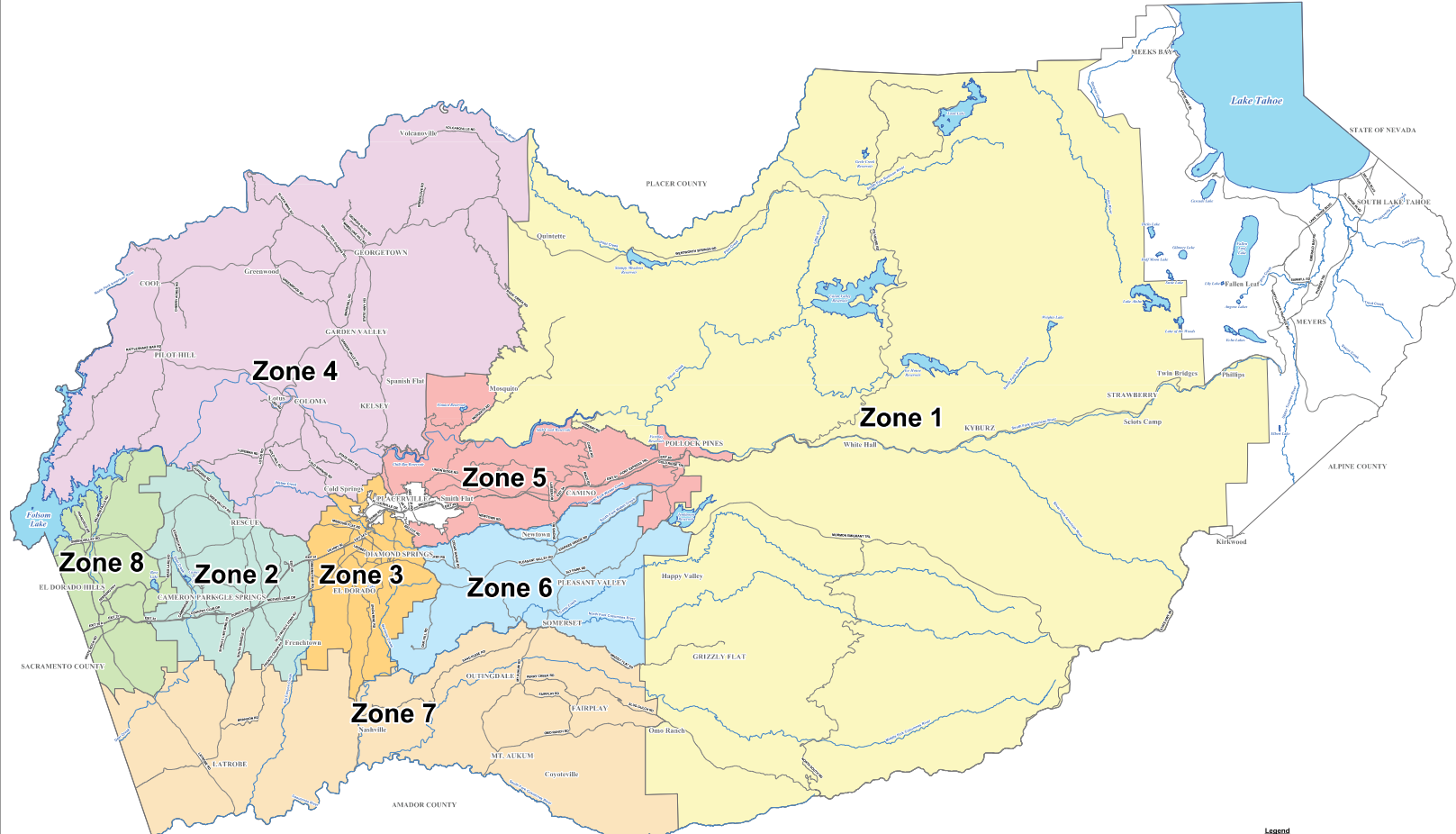
The agreements that are associated with these large developments specify that if, at the time of the payment, the County has not yet adopted and implemented the ITS Program as part of a mandatory fee program applicable in part to multi-family residential development projects, funds received from the applicant shall be held in a special revenue fund. The funds will be held until such time as the County has adopted and implemented the ITS Program, at which time the funds shall be transferred into the ITS Program account.

Since the ITS Program has not yet been adopted by the Board, the collected funds have been placed in the ITS Program Fee special revenue fund (3670755). ITS fees collected in FY 2018-19 and FY 2019-20 are included in Attachment C, since they were not previously reported.

Per Government Code Section 66006, the County is required to deposit, invest, account for, and expend the fees in a prescribed manner.

**More information about the fee programs can be found in the enabling resolutions and ordinances for each program and the subsequent updates. Refer to Attachment B for a listing of the resolutions and ordinances.**

Figure 1a



**Legend**

**TIM Fee Zones**

- 1 Grizzly Flat/Quintette/west of Echo Summit
- 2 Cameron Park/Shingle Springs
- 3 El Dorado/Diamond Springs
- 4 Coloma/Cool /Georgetown
- 5 Placerville/Camino/Pollock Pines
- 6 Pleasant Valley
- 7 Fairplay/Latrobe/Mt Aukum
- 8 El Dorado Hills

Major Roads

Rivers & Creeks

0 1 2 4 6 Miles

Map displayed in State Plane Coordinate System (NAD 1983 California Zone 2, feet)

**DISCLAIMER:**  
 THIS DOCUMENT WAS COMPILED FROM UNVERIFIED PUBLIC AND PRIVATE SOURCES AND IS SUPPLIED AS INFORMATION ONLY. IT SHOULD NOT BE RELIED UPON FOR ANY PARTICULARLY UNRELIABLE. USERS MAKE USE OF THIS DOCUMENT AT THEIR OWN RISK.

**NOTES:**  
 1. OTHER INFORMATION MAY COVER ADDITIONAL AREAS OUTSIDE OF THE DISPLAYED AREA.  
 2. PREPARED BY THE COUNTY OF EL DORADO, DATE: 10/10/2016  
 3. MAP PREPARED BY G. ANDERSON, DATE: 10/10/2016  
 4. I.R. PROJECT #14, RELATED REPORT: /14  
 5. EL DORADO COUNTY (SUPERVISOR) & DIVISION  
 PHONE: (916) 835-3333 FAX: (916) 835-3333



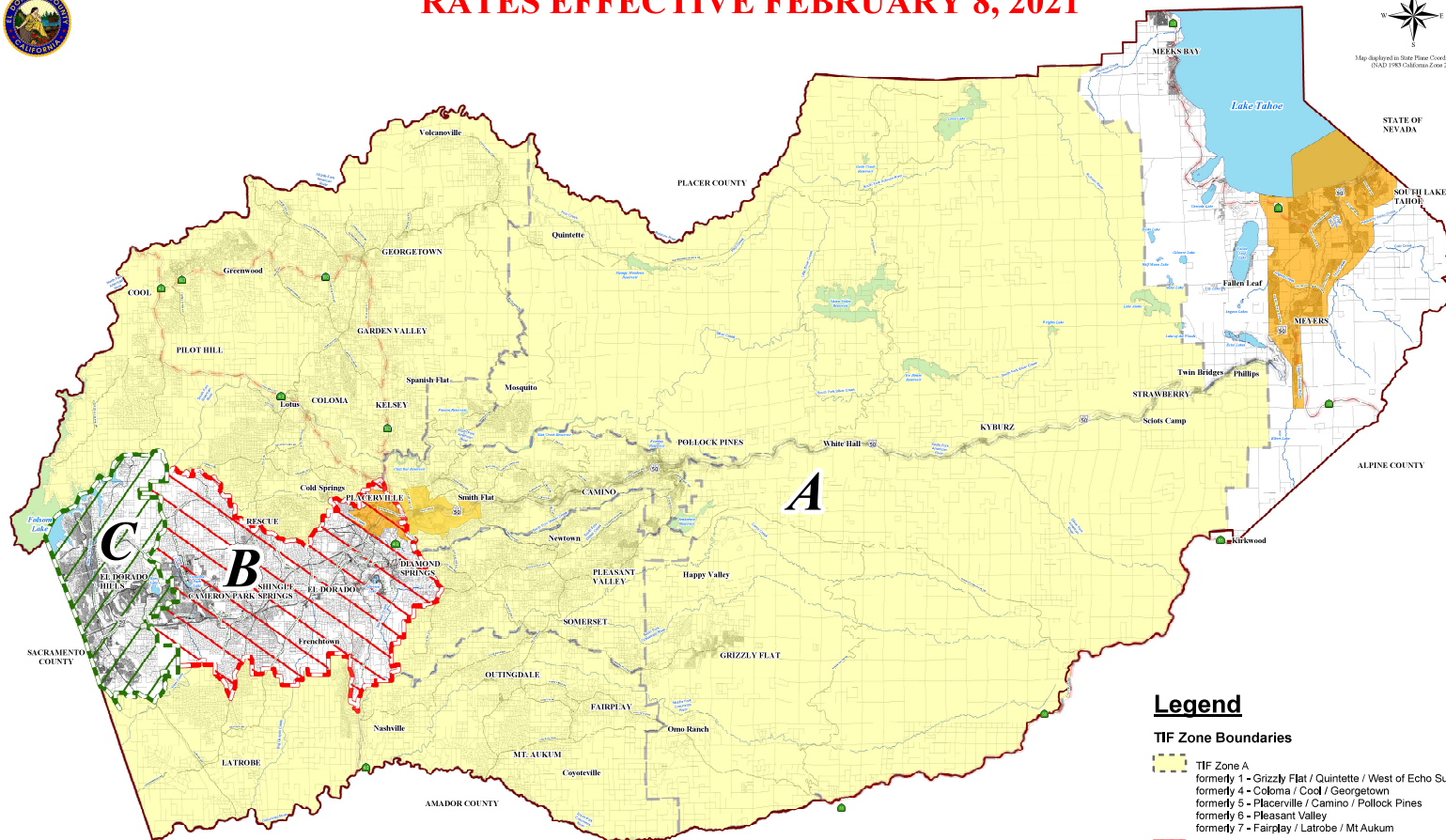
Exhibit B  
 TIM Fee Zone Map  
 County of El Dorado  
 State of California





# RATES EFFECTIVE FEBRUARY 8, 2021

Figure 1b



### Legend

#### TIF Zone Boundaries

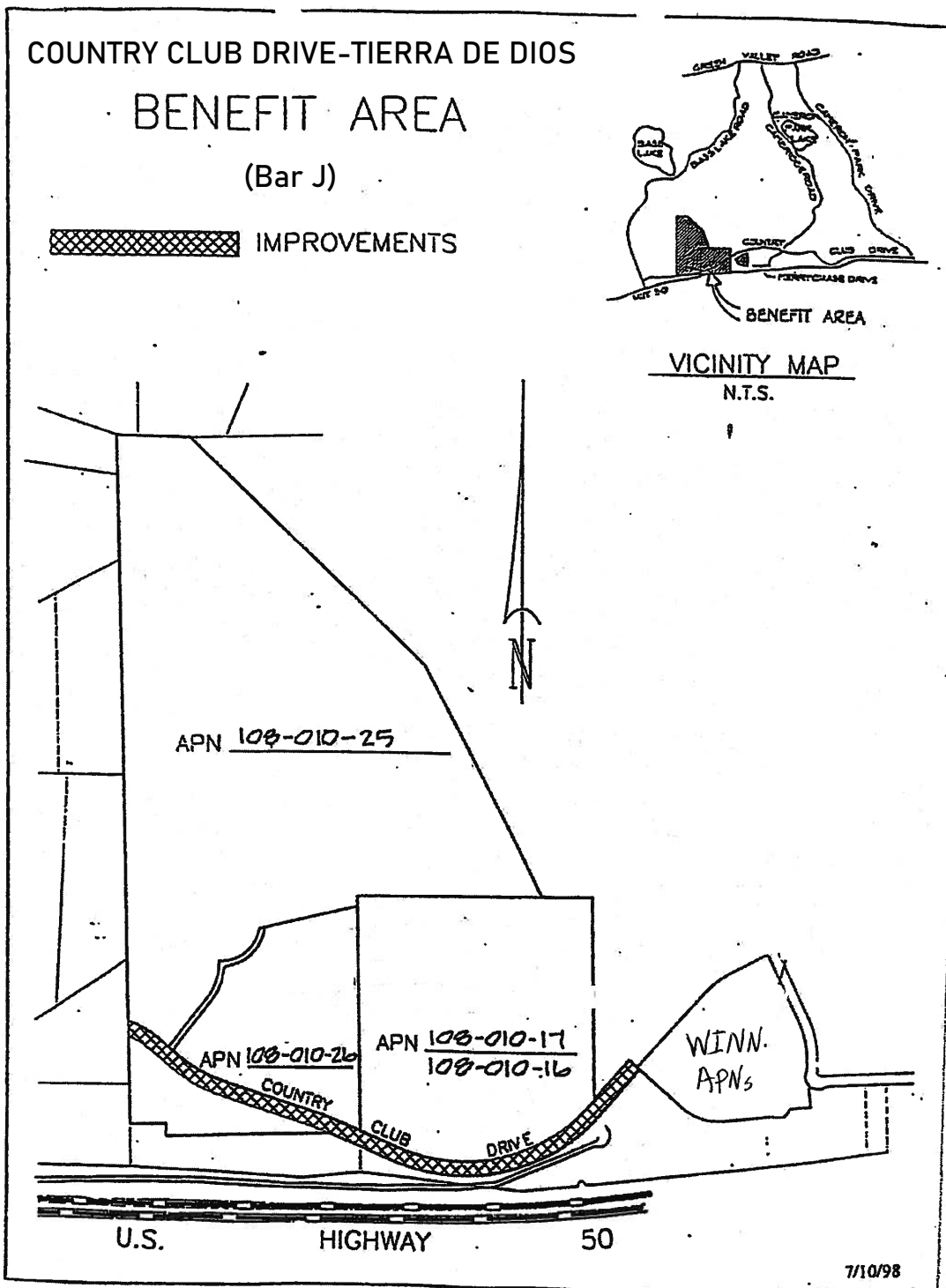
- TIF Zone A  
formerly 1 - Grizzly Flat / Quintette / West of Echo Summit  
formerly 4 - Coloma / Cool / Georgetown  
formerly 5 - Placerville / Camino / Pollock Pines  
formerly 6 - Pleasant Valley  
formerly 7 - Fairplay / Latrobe / Mt Aukum
- TIF Zone B  
formerly 2 - Cameron Park / Shingle Springs  
formerly 3 - El Dorado / Diamond Springs
- TIF Zone C  
formerly 8 - El Dorado Hills
- Parcels
- Cities
- Rivers & Creeks
- Lakes
- Major Roads
- US Highway
- State Routes

## EXHIBIT B

Adopted Traffic Impact Fee Zones  
With Parcel Boundaries  
County of El Dorado  
State of California

DISCLAIMER:  
DATE AND TIME ZONE COORDINATES FROM UNVERIFIED SOURCE. THIS MAP IS FOR INFORMATIONAL PURPOSES ONLY. THE INFORMATION IS PROVIDED AS IS WITHOUT WARRANTY OF ANY KIND, INCLUDING MERCHANTABILITY, FITNESS FOR A PARTICULAR PURPOSE, OR ACCURACY. THE USER ASSUMES ALL LIABILITY FOR THE USE OF THIS INFORMATION.  
NOTES:  
LARGER RESOLUTION MAY COVER ADDITIONAL AREAS OUTSIDE OF THE DISPLAYED AREA.  
PREPARED AT THE REQUEST OF: DOT Impact Fees DATE: 12/06/20  
MAP PREPARED BY: JWA/MLH DATE: 1/18/2021

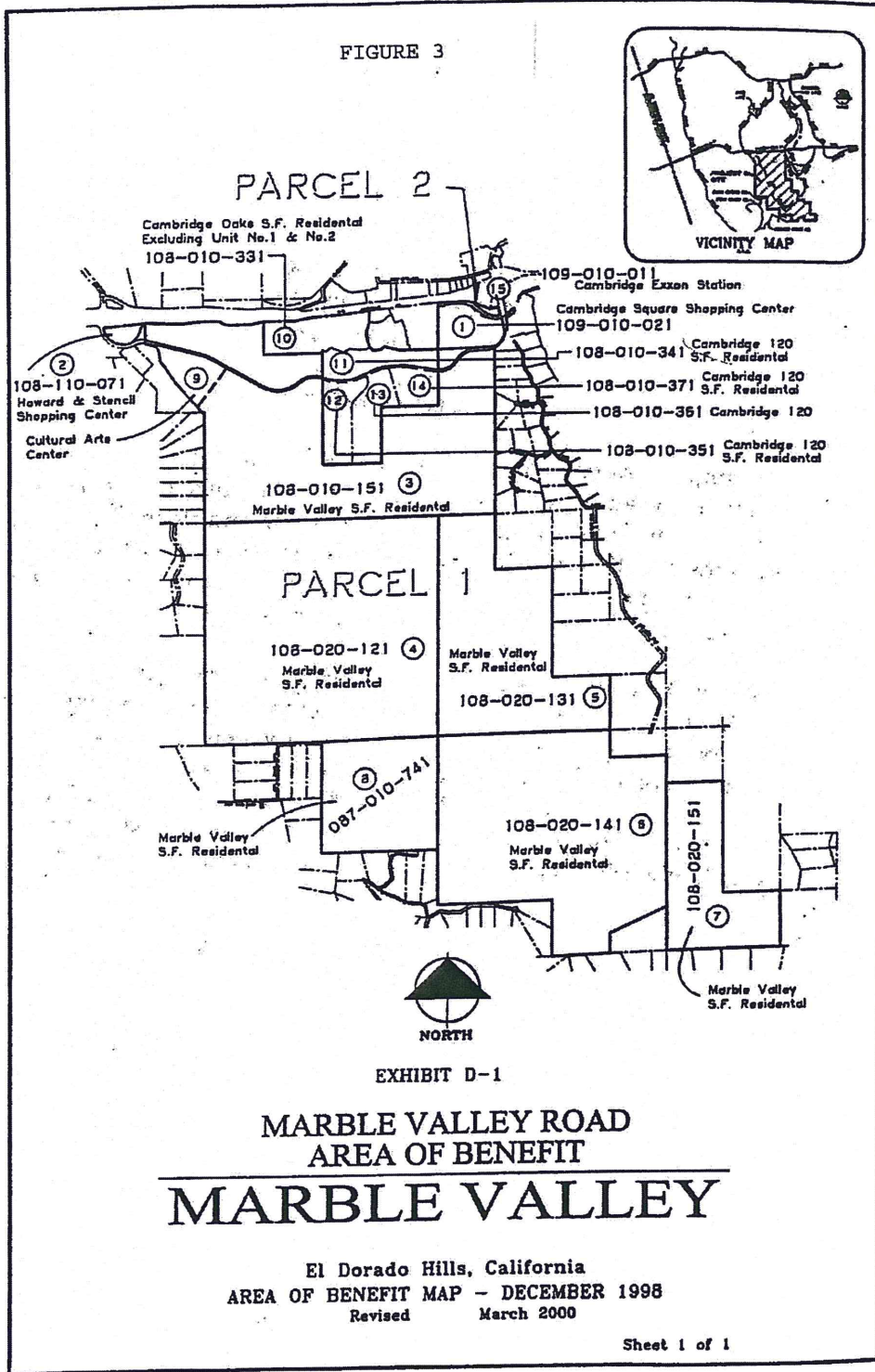
FIGURE 2





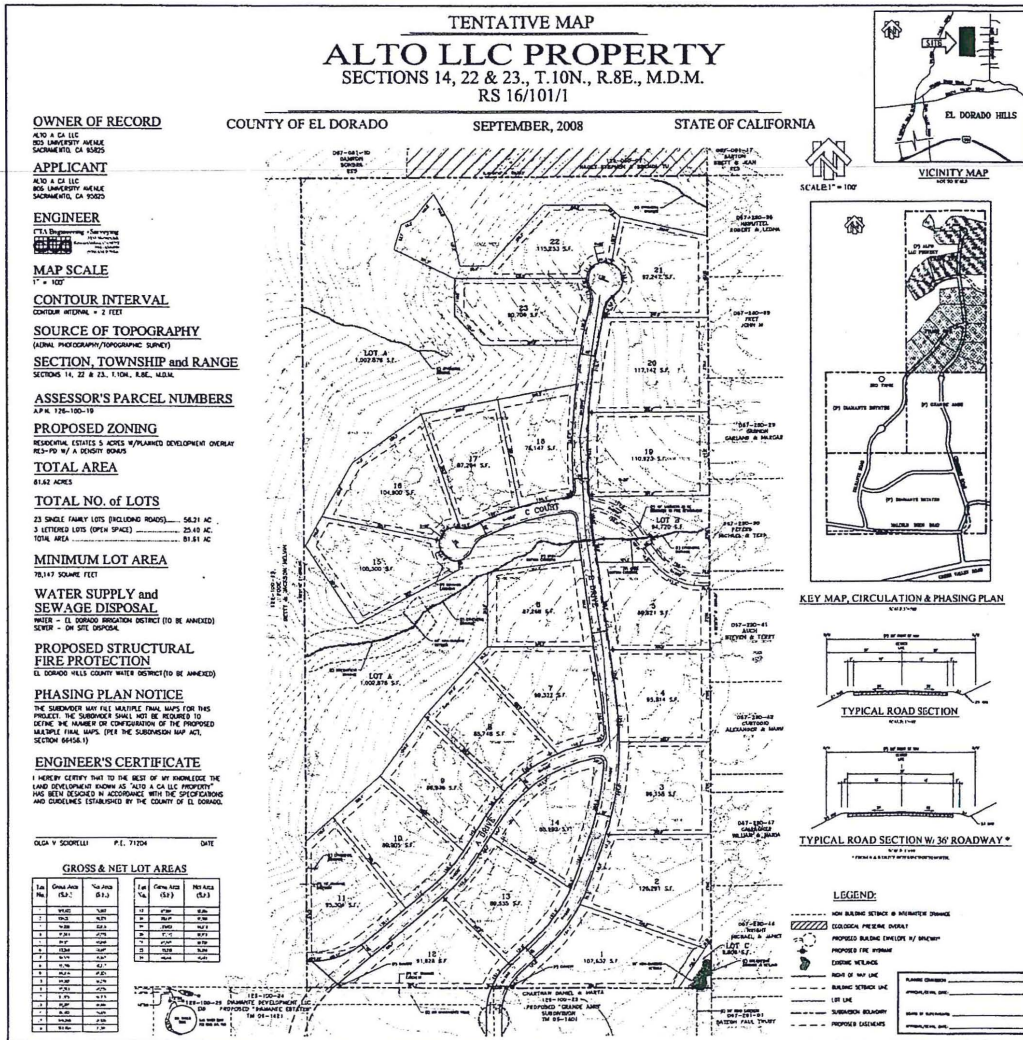
022262

FIGURE 3



# Exhibit E: Tentative Subdivision Map

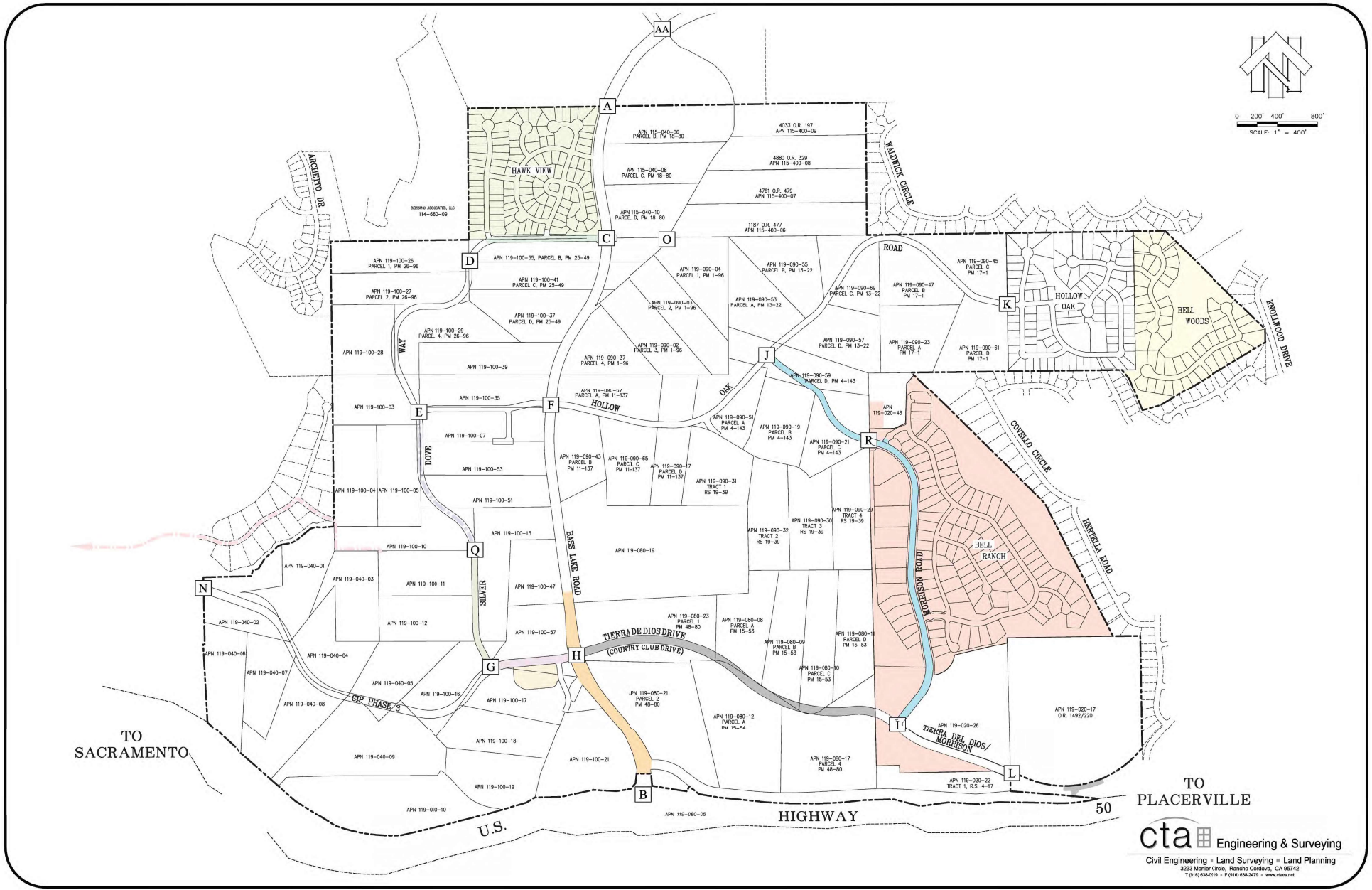
FIGURE 4



M:\04-076-001\PLANNING\TENTATIVE MAP\04-076-001-TM.dwg, TENTATIVE MAP, 2/9/2009 11:56:22 AM, Imartin

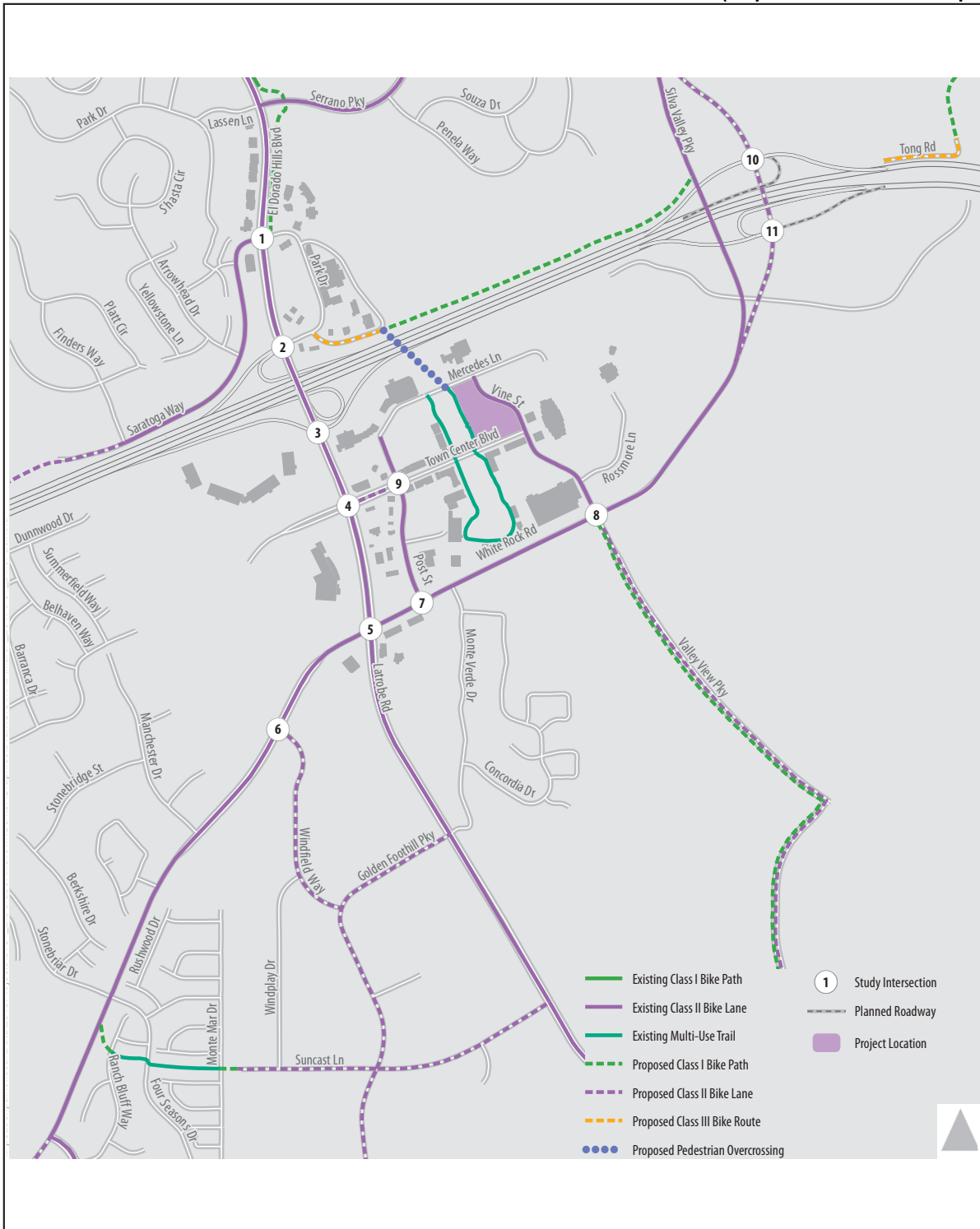


**Figure 6**  
 (Map in reference to Bass Lake Hills PFFP Program)



M:\181107\EMT\BASS LAKE OVERLAP EXHIBIT COLOR REDUCTION\21-1232-A-12 of 14.dwg, 11/11/2019 10:00:00 AM

**Figure 7**  
**(Map for reference to ITS program)**



SOURCE: Fehr and Peers, 2017

FIGURE 4.8-2



1269.001-06/17

Existing and Planned Bicycle Facilities