



County of El Dorado Safety Element Update

Public Workshop #3 – December 5, 2023



1

Introductions

Project Team

WSP USA Environment & Infrastructure Inc.

- Juliana Prosperi, AICP – Project Manager
- Melissa Baum – Hazard Mitigation Planner

El Dorado County, Planning & Building Department

- Thea Graybill – Project Manager
- Bret Sampson – Planning Manager



2

Workshop Agenda

1. General Plan Overview
2. County's General Plan Elements
3. Safety Element Overview
4. Safety Element Required Components
5. Public Outreach and Engagement
6. Changes to State Law
7. Summary of Revisions
8. Safety Element Organization
9. Plan Integration
10. New Policies and Implementation Measures
11. Next Steps
12. Public Draft Review – comments due Monday, January 8th



3

What is a General Plan?



4

Components of the General Plan



*Required if Disadvantaged Communities are located in the Jurisdiction



5

Safety Element Overview

- **Goal** is to reduce the potential short and long-term risk of death, injuries, property damage, and economic and social dislocation resulting from wildfires, floods, droughts, earthquakes, landslides, climate change, and other hazards.
- **One of seven mandatory elements** of the County's General Plan.
- **Involves regular updates** to meet State legal mandates.



6

Safety Element Required Components

- ✓ Goals and Policies
- ✓ Hazard Maps
- ✓ Wildland and Urban Fires
- ✓ Flooding
- ✓ Slope Instability
- ✓ Seismic Risks
- ✓ Climate Change Adaptation and Resilience
- ✓ Implementation Program



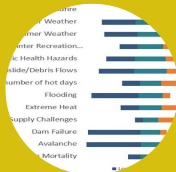
7

Public Outreach & Engagement



- Repository for CVA and Safety Element Update information
- Link to sign up for email updates

Website



- Bi-lingual survey circulated to inform the CVA
- Opportunity to share feedback on climate change and adaptation

Online Survey



- 4 SEAC workshops
- 2 stakeholder workshops
- 3 public workshops
- Numerous one-on-one coordination meetings with key stakeholders

Workshops



- Press releases about events
- Public notices/flyers
- Announcements for workshops

Social Media



8

Changes to State Law

- **SB 1241:** Wildfire hazards
- **SB 379:** Climate Vulnerability Assessment & adaptation framework
- **AB 747, AB 1409, & SB 99:** evacuation accessibility
- **SB 1035:** integrates the Housing and Safety Elements
- **AB 2140:** financial incentive to jurisdictions that have integrated the LHMP into the Safety Element



9

Summary of Revisions

- **Existing Health, Safety, and Noise Element**
 - Reflects policy priorities established approximately 20 years ago
- **Proposed Safety Element Update**
 - Complies with statutory requirements
 - Updates existing conditions information
 - Incorporates of a set of climate adaptation policies
 - Identifies County issues, assets, and opportunities
 - Revisits the Countywide vision and guiding principles
 - Evaluates new and revised policy options
 - Engages stakeholders and the community
- **Additional Options**
 - Contemporary, web-based, and user-friendly Safety Element



10

How is the Safety Element update organized?

Existing Topics

-  Geologic and Seismic Hazards
-  Fire Hazards
-  Flood Hazards
-  Highway Safety
-  Noise
-  Hazardous Materials
-  Air Quality
-  Aviation-Related Hazards

New Topics

-  Drought
-  Extreme Heat
-  Evacuation Accessibility
-  Agricultural and Forestry Pests: Tree Mortality
-  Severe Weather: High Winds, Thunderstorm/Heavy Rain/Hail/Lightning
-  Climate Adaptation and Resiliency: Energy Shortages, PSPS
-  Public Health; Pandemic/Epidemic/Other Health Concerns



11

What will the Safety Element Update include?

Government Code Section 65302(g)(1)
Protection of the community from unreasonable risk associated with:

- Geologic and Seismic Hazards
 - ✓ Surface Rupture
 - ✓ Ground Shaking
 - ✓ Liquefaction
 - ✓ Ground Failure
 - ✓ Subsidence



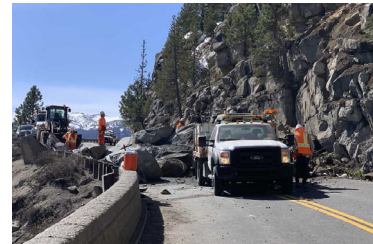
12

What will the Safety Element Update include?

Government Code Section 65302(g)(2)

Protection of the community from unreasonable risk associated with:

- Flooding
- Dam Inundation
- Tsunami/Seiche
- Slope Instability
 - ✓ Landslides
 - ✓ Mudslides
 - ✓ Rock Falls
 - ✓ Debris Flows



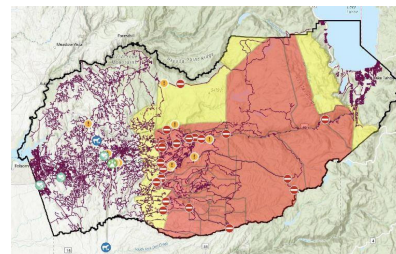
13

What will the Safety Element Update include?

Government Code Section 65302(g)(3)

protection of the community from unreasonable risk associated with:

- **Wildland and urban fires**
 - ✓ SRA Fire Safe Regulations
 - ✓ Defensible Space Maintenance
 - ✓ Evacuation Standards & Emergency Access
 - ✓ Plans to Reach At-Risk Populations
 - ✓ Peak Load Water Supply & Fire Flow
 - ✓ Fire Breaks
 - ✓ Future Emergency Service Needs
 - ✓ Inter-Agency Coordination



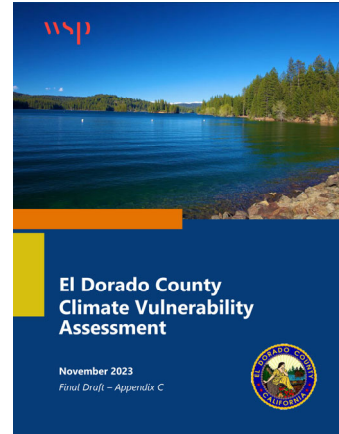
14

What will the Safety Element Update include?

Government Code Section 65302(g)(4) requires a vulnerability assessment that identifies the risks climate change poses to the local jurisdiction and requires the incorporation of climate adaptation and resiliency strategies:

- **Climate Adaptation Framework**

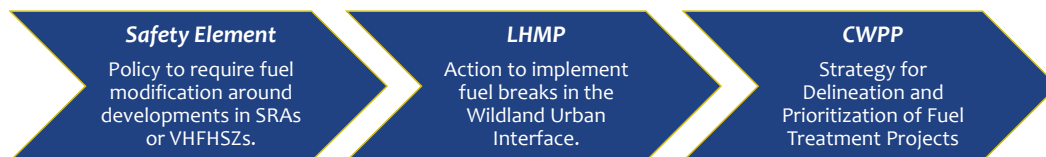
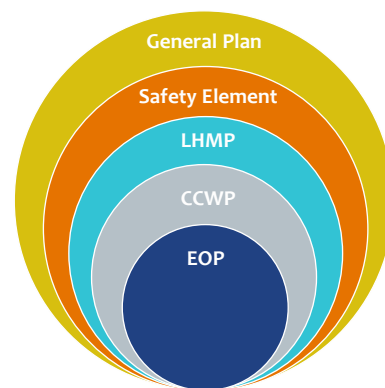
- ✓ Climate Vulnerability Assessment
- ✓ Update Safety Element to address climate adaptation
- ✓ Develop adaptation and resilience goals, policies, and objectives
- ✓ Develop feasible implementation measures



15

Plan Integration

- Housing Element (2021)
- Safety Element (2023)
 - Climate Vulnerability Assessment
- LHMP (2018, Update Anticipated 2024)
- Community Wildfire Protection Plans
 - West Slope CWPP (2022)
 - Tahoe Basin CWPP (Update 2023-2024)
- Emergency Operations Plan (2022)



16

New Policies & Implementation Measures

- **27 Fire Safety Policies**
 - 8 Existing Policies
 - 3 Revised Wildfire Policies
 - 16 New Wildfire Policies
- **14 Geologic & Seismic Hazard Policies**
 - 6 Existing Policies
 - 8 New Policies
- **8 Flood Policies**
 - 7 Existing Policies
 - 1 New Policy
- **8 Evacuation Accessibility Policies**
 - 8 New Policies
- **2 Human-Health Hazards Policies**
 - 5 New Policies
- **7 Climate Adaptation and Resiliency Policies**
 - 7 New Climate Adaptation Policies
 - 10 New Drought & Water Supply Policies
 - 4 New Agriculture and Forestry Disease Policies
 - 5 New Extreme Heat Policies
 - 4 New High Wind Policies
 - 3 New Severe Weather Policies
- **35 Implementation Measures**
 - 24 Existing Measures in Progress
 - 11 New Measures



17

New Safety Element Implementation Measures

- **11 New Implementation Measures**
 - HS-Y: Develop development standards, coordinated emergency notification, and evacuation plans and procedures for development in the WUI, SRA, or very high FHSZ
 - HS-Z: Coordinate climate resiliency efforts
 - HS-AA: Designate facilities to be cooling centers or resilience hubs
 - HS-BB: Promote water conservation
 - HS-CC: Support EDWA's water resource and drought programs and plans
 - HS-DD: Ensure free or discounted vaccinations
 - HS-EE: Update emergency plans and procedures every 5 years
 - HS-FF: Develop and implement Drought Task Force and Drought Resilience Plan
 - HS-GG: Implement Stormwater Management Plan
 - HS-HH: Analyze environmental impacts when a project is in hazardous location
 - HS-II: Support biomass utilization



18

Next Steps

- Public draft comments due Monday, January 8th
- Final Public Workshop – Tuesday, December 5 at 5:30 p.m.
- Final SEAC Workshop in January/February
- CalGS review and approval (45 days prior to BOS approval) – 30 days
- California Board of Forestry and Fire Protection & Local Fire Protection District Review (90 days prior to adoption) – 60 days
- Planning Commission adoption hearing
- Board of Supervisors adoption hearing



19

Safety Element Update Public Draft Review

Public comments due by Friday, January 8th

Submit your written comments to:

Thea Graybill, Senior Planner

Email: thea.graybill@edcgov.us

Address: Planning and Building Department, Long Range Planning
2850 Fairlane Court, Building C, Placerville, CA 95667

Subscribe to the Safety Element Update email listserv at:

<https://www.edcgov.us/Government/longrangeplanning/Pages/General-Plan-Safety-Element-Update.aspx>



20