



County of El Dorado Safety Element Update

Public Workshop #3 – September 13, 2023



1

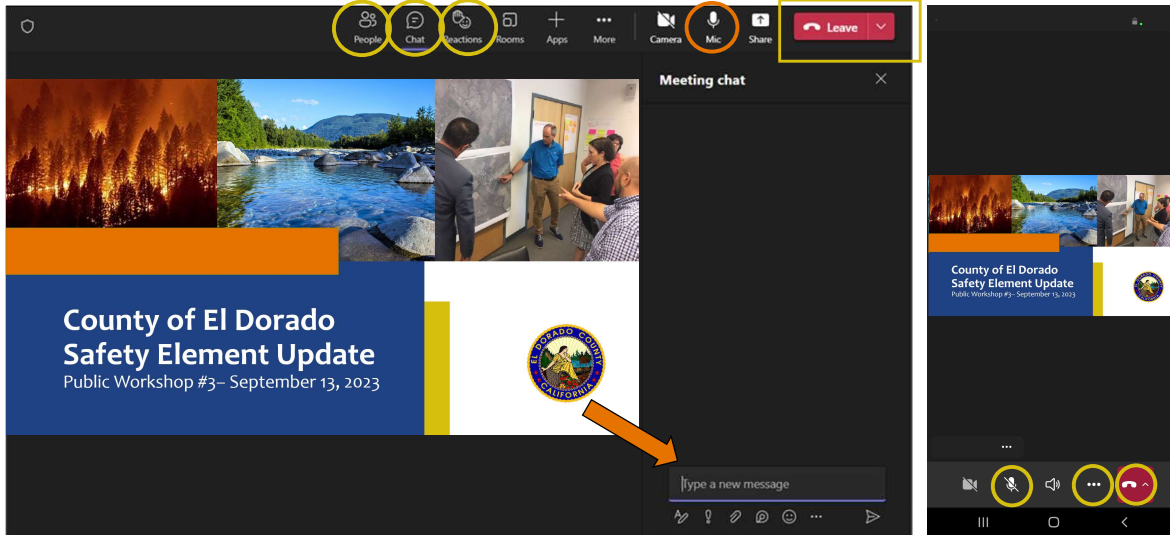
Agenda

1. Introductions
2. Review of Planning Process
3. General Plan Overview
4. Related Planning Efforts
5. What is a Safety Element?
6. Proposed Goals, Policies, and Implementation Programs
7. Plan Integration
8. Schedule and Next Steps
9. Outreach and Engagement Opportunities
10. Public Feedback & Questions




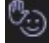

2

Teams Overview



3

Meeting Etiquette & General Housekeeping

- We will provide a 40-minute presentation followed by a Q&A session.
- You can share your ideas and provide feedback by using the “Chat” log.  Everyone’s ideas and input has value!
- Select “Show reactions”  and use the “Raise your hand”  button to ask questions and provide information. We also encourage everyone to participate in our polling questions through Slido.com.
- During the Q&A session, please treat everyone with respect. We all bring unique perspectives, expertise, and insight to tonight’s conversation.
- This meeting slides and meeting summary will be made available after the workshop.

4



4

Workshop Intent: What we are here for today

- Promote a respectful and collaborative atmosphere of learning
- Meet the State legislature mandate
- Facilitate a mutual exchange of information



5

Workshop Intent: What we are not here for today

- Promote a learning atmosphere that is **not** supportive of a respectful and collaborative experience for all
- Debate the efficacy of current state policy or regulations
- Change current state policies or regulations



6

Introductions

County of El Dorado Planning & Building Department

- Thea Graybill – Senior Planner
- Bret Sampson – Planning Manager

WSP Environment & Infrastructure

- Juliana Prospero, AICP – Project Manager
- Jeff Brislaw, CFM – Senior Technical Advisor
- Mack Chambers – GIS Specialist
- Melissa Baum – Environmental Planner
- **Safety Element Advisory Committee**

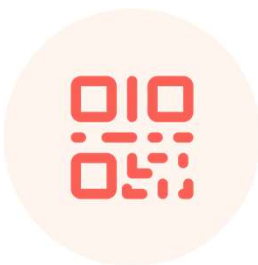
Stakeholder Group

Community Members



7

slido



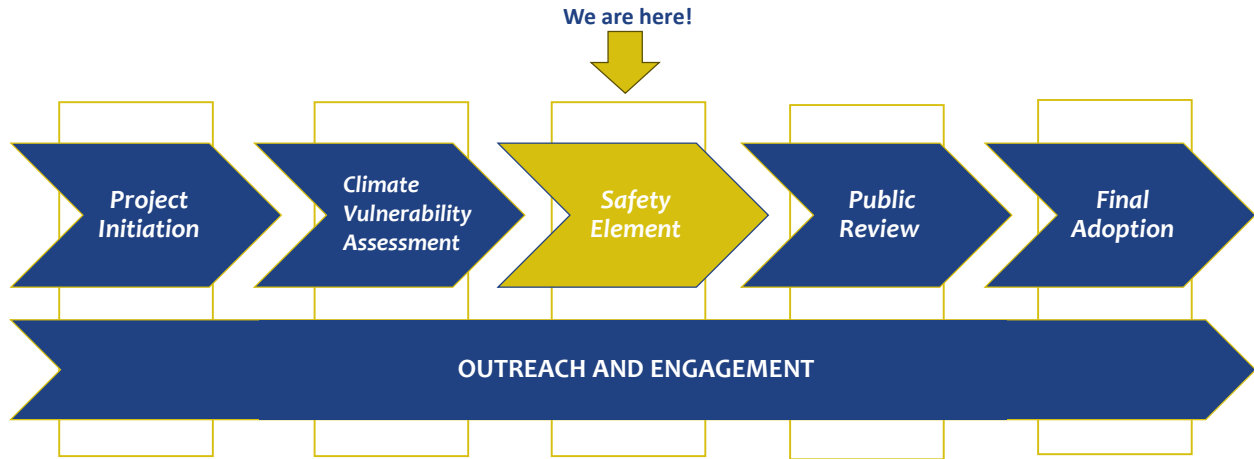
Join at [slido.com](https://www.slido.com)
#EDC

① Start presenting to display the joining instructions on this slide.

8

8

Review of Planning Process



9

9

What is a General Plan?



10

Components of the General Plan



11

General Plan Elements

The term “element” refers to the topics that California law requires to be covered in a general plan.

Required Elements:

- Land Use
- Circulation
- Housing
- Conservation
- Open Space
- Noise
- Safety
- Air Quality
- Environmental Justice
 - Can be completed as a stand-alone element or within other elements

Optional Elements

- Health
- Equity
- Community Development
- Water
- Economic Development
- Resiliency

12

Related Planning Efforts



Housing Element

Adopted August 31, 2021; Amended March 22, 2022



Safety Element

Last amended August 19, 2019



MJHMP

2018 LHMP; Update in Progress



CWPP

West Slope CWPP
Tahoe Basin CWPP



Climate Vulnerability Assessment

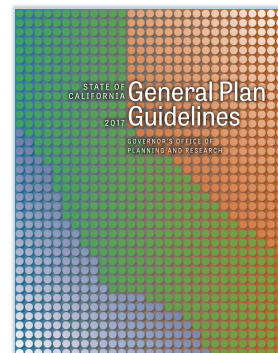
CVA and Social Equity Policies Integrated into Safety Element

13

What is a Safety Element Update?

- **Goal:** To reduce the potential short and long-term risk of death, injuries, property damage, and economic and social dislocation resulting from fires, floods, droughts, earthquakes, landslides, climate change, and other hazards.
- **Mandatory** chapter of the General Plan
- **Involves** regular updates to meet statutory mandates
- **Required Components:**

- | | |
|----------------------------|--|
| ✓ Goals and Policies | ✓ Seismic Risks |
| ✓ Hazard Maps | ✓ Climate Change Adaptation and Resilience |
| ✓ Wildland and Urban Fires | ✓ Implementation Program |
| ✓ Flooding | |
| ✓ Slope Instability | |

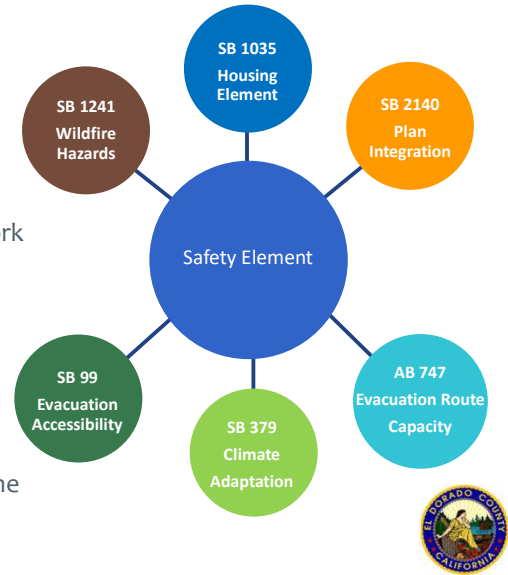


14

Why Update the Safety Element?

Recent Statutory Requirements for Safety Elements:

- Senate Bill (SB) 1241
 - ✓ Wildfire Hazards
- SB 379
 - ✓ Climate Vulnerability Assessment & Adaptation Framework
- Assembly Bill (AB) 747 & SB 99
 - ✓ Evacuation Accessibility
- SB 1035 Housing Element Update
 - ✓ Integrates the Housing and Safety Elements
- AB 2140
 - ✓ Financial incentive to jurisdictions that have integrated the LHMP into the Safety Element



15

What will the Safety Element Update Include?

Existing Health, Safety, and Noise Element

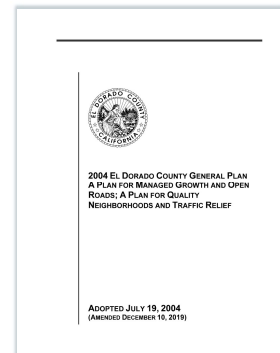
- Reflects policy priorities established approximately 20 years ago

Proposed Safety Element Update

- Complies with statutory requirements
- Updates existing conditions information
- Incorporates a set of climate adaptation policies
- Identifies County issues, assets, and opportunities
- Revisits the Countywide vision and guiding principles
- Evaluates new and revised policy options
- Engages stakeholders and the community

Additional Options

- Contemporary, web-based, and user-friendly Safety Element



16

What will the Safety Element Update Include?

Existing Topics

-  Geologic and Seismic Hazards
-  Fire Hazards
-  Flood Hazards
-  Highway Safety
-  Noise
-  Hazardous Materials
-  Air Quality
-  Aviation-Related Hazards

New Topics

-  Drought
-  Extreme Heat
-  Evacuation Accessibility
-  Agricultural and Forestry Pests: Tree Mortality
-  Severe Weather: High Winds, Thunderstorm/Heavy Rain/Hail/Lightning
-  Climate Adaptation and Resiliency: Energy Shortages, PSPS
-  Public Health; Pandemic/Epidemic/Other Health Concerns



17

slido



Have you taken any precautionary measures related to disaster preparedness?

① Start presenting to display the poll results on this slide.

18

18

What will the Safety Element Update Include?

Government Code Section 65302 (g) (1)
Protection of the Community from
Unreasonable Risk Associated with:

Geologic and Seismic Hazards

- ✓ Surface Rupture
- ✓ Ground Shaking
- ✓ Liquefaction
- ✓ Ground Failure
- ✓ Subsidence

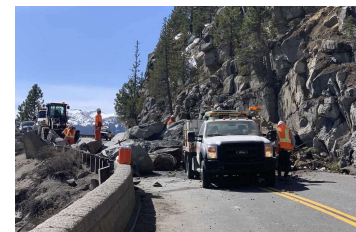


19

What will the Safety Element Update Include?

Government Code Section 65302 (g) (1)
Protection of the Community from
Unreasonable Risk Associated with:

- Flooding
- Dam Inundation
- Tsunami/Seiche
- Slope Instability
 - ✓ Landslides
 - ✓ Mudslides
 - ✓ Rock Falls
 - ✓ Debris Flows



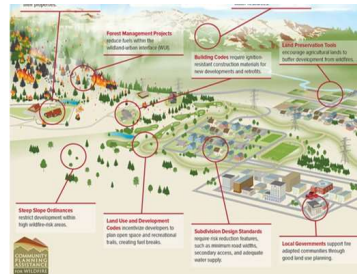
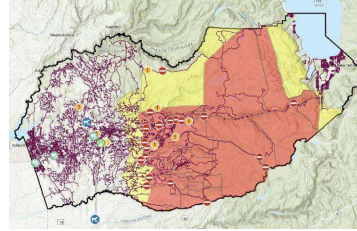
20

What will the Safety Element Update Include?

Government Code Section 65302 (g) (1) Protection of the Community from Unreasonable Risk Associated with:

• Wildland and Urban Fires

- ✓ SRA Fire Safe Regulations
- ✓ Defensible Space Maintenance
- ✓ Evacuation Standards & Emergency Access
- ✓ Plans to Reach At-Risk Populations
- ✓ Peak Load Water Supply & Fire Flow
- ✓ Fire Breaks
- ✓ Future Emergency Service Needs
- ✓ Inter-Agency Coordination



21

slido



What types of resources or programs would you like the County to provide to help people be better informed and prepared for natural hazards?

① Start presenting to display the poll results on this slide.

22

22

Guide to the Safety Element: Key Terms

- **Goal** – a general and broad expression of community values and direction that describes in the desired future condition.
- **Objective** – a specified end, condition, or state that is a measurable intermediate step toward attaining a goal
- **Policy**– a clear and unambiguous statement that guides a specific course of action for decision-makers to achieve a desired goal and objective and to implement the General Plan’s vision.
- **Implementation Program** – Some policies require specific programs to assure their implementation. These programs are included as the last section in each element. They include an implementation measure followed by a box that denotes the responsible party and general timeframe for the measure.
- **Implementation Measure** – an action, procedure, program, or technique that carries out general plan policy.



23

Guide to the Safety Element: Organization

GOAL 1.1: FIRE HAZARDS

To improve the resilience of the County to wildfire risk by locating, designing, and constructing development in a manner that minimizes the risk, and by providing effective fire prevention, suppression, and response facilities and services.

OBJECTIVE 1.1.1: DEFENSIBLE SPACE

All new development and structures shall meet “defensible space” requirements and adhere to fire code building requirements to minimize wildland fire hazards.

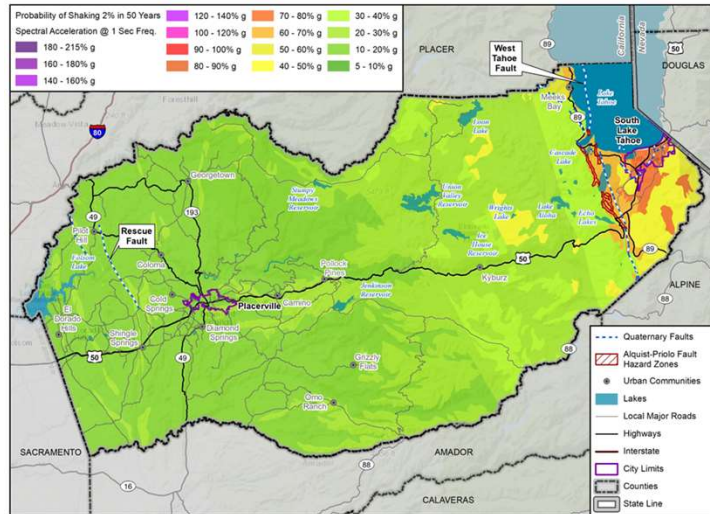
Policy 1.1.1 Implement Fire Safe Ordinance to attain and maintain defensible space through conditioning of tentative maps and in new development at the final map and/or building permit stage. [Source: Existing Policy]

Policy 1.1.2 The County shall continue to require development to incorporate design measures that enhance fire protection in areas of high risk. This shall include but it is not limited to the incorporation of fire-resistant structural design, use of fire-resistant landscaping, and fuels modification around the perimeter of structures. [Source: New Policy]



24

Goals, Policies & Implementation Programs: Geologic and Seismic



Map compiled 6/2023, intended for planning purposes only. Data Source: El Dorado County, California Geological Survey, USGS

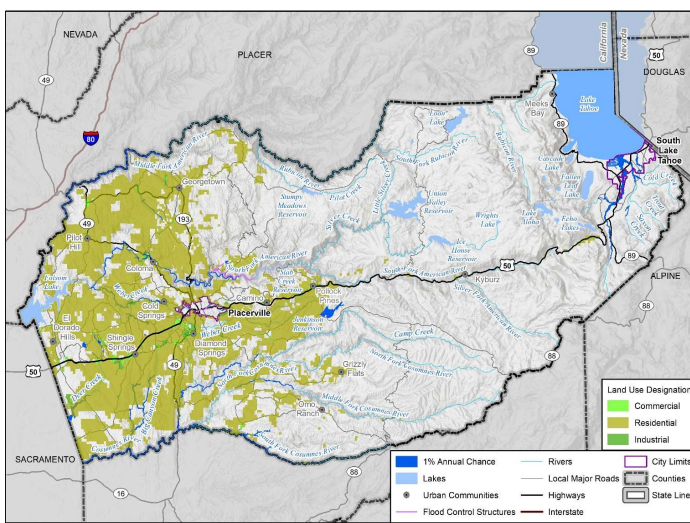
Goal: Minimize the threat to life and property from seismic and geologic hazards.

Objective: Adopt and enforce development regulations, including building and site standards to avoid social dislocations and protect against seismic and geologic hazards.

Policy: Prohibit the construction of buildings near active faults in Fault Zones unless a geologic investigation is performed to delineate the hazards associated with surface fault ruptures and mitigation based on the investigation, are included in the design.

Implementation Measure: Develop a program to maintain geological, seismic, avalanche, and other geological hazard information.

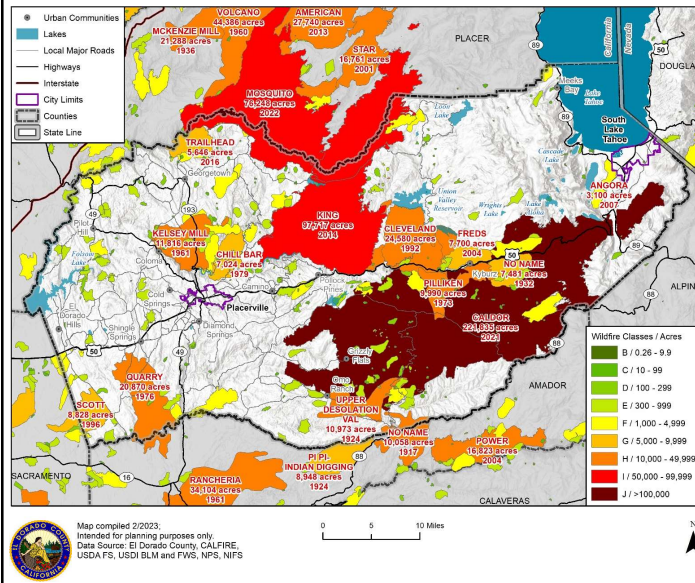
Goals, Policies, and Implementation Program: Flooding



Map compiled 1/2023, intended for planning purposes only. Data Source: El Dorado County, FEMA NFHL 4/2012. *0.2% Annual chance floodplains are not shown due to not being able to show up at the current map scale.

- **Goal:** Protect the residents of El Dorado County from flood hazards.
- **Objective:** Protect life and property of County residents below dams.
- **Policy:** Coordinate with the El Dorado Irrigation District, the Georgetown Divide Public Utility District, the Cameron Park Community Services District, and the Sacramento Municipal Utility District to ensure there are protections in place for flood protection and to address dam incident risks.
- **Implementation Measure:** Continue to participate in the NFIP, maintain flood hazard maps and floodplain data [...] County shall determine whether the projects are within the 100-year floodplain based on these data.

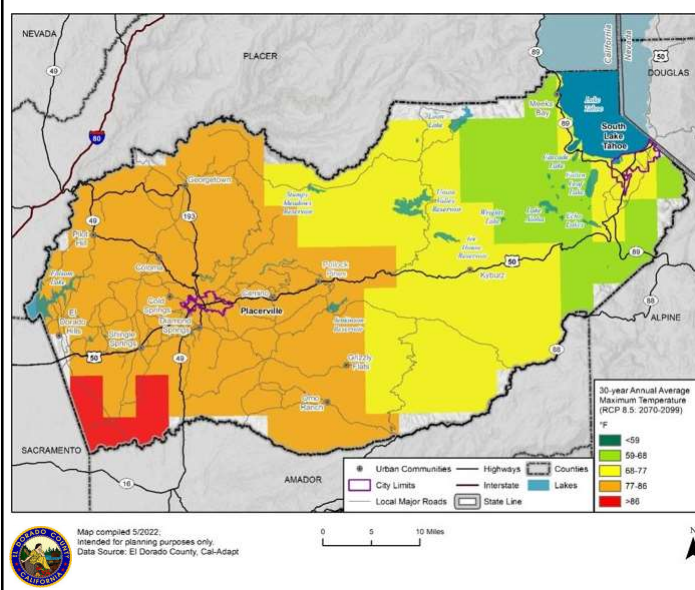
Goals, Policies, & Implementation Programs: Fire Hazards



- **Goal:** Minimize fire hazards and risks in both wildland and developed areas.
- **Objective:** Reduce fire hazard through cooperative fuel management activities.
- **Policy:** Require fuel modification around homes and subdivision developments in SRAs and VHFHSZs.
- **Implementation Measure:** Develop development standards for wildfire protection and streamline high-density residential and affordable housing developments located within infill locations that are within the WUI, SRA, or VHFHSZ and have adequate access, defined evacuation routes, and sufficient water supplies and infrastructure.

27

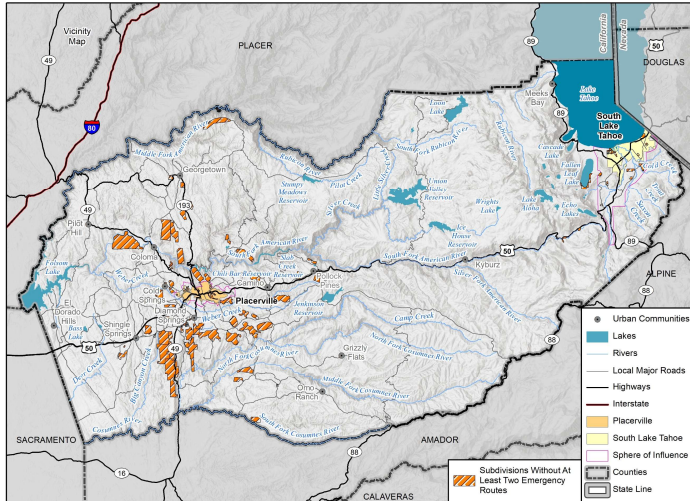
Goals, Policies, and Implementation Programs: Climate Adaptation & Resiliency



- **Goal:** Ensure the County can adapt to the hazards created or exacerbated by climate change.
- **Objective:** Minimize the risks and vulnerabilities associated with climate change.
- **Policy:** Identify natural infrastructure or nature-based solutions when considering restoration, infrastructure, engineering improvements that may be used as an adaptation project component proposed by County Departments. The adaptation component shall use existing natural features and ecosystem processes, or the restoration of natural features and ecosystem processes, when developing alternatives.
- **Implementation Measure:** Analyze potential environmental impacts that a project may cause by placing projects in hazardous locations, including locations potentially affected by hazards that result from climate change.

28

Goals, Policies, and Implementation Programs: Evacuation Accessibility



- **Goal:** Identify and maintain adequate evacuation routes in the incorporated and unincorporated County.
- **Objective:** Identify emergency evacuation routes and areas without at least 2 evacuation routes.
- **Policy:** The County shall continue to improve transportation corridors that support effective evacuation routes and access for the public and emergency responders including residential developments in hazard areas that do not have at least 2 emergency evacuation routes and shall work with affected residents to help prepare them to anticipate their evacuation alternatives.
- **Implementation Measure:** Review/Update emergency response and evacuation plans at least every 5 years to reflect current conditions and community needs.

29

slido



During past hazard events, what communication or evacuation challenges did you experience that should be addressed in the Safety Element?

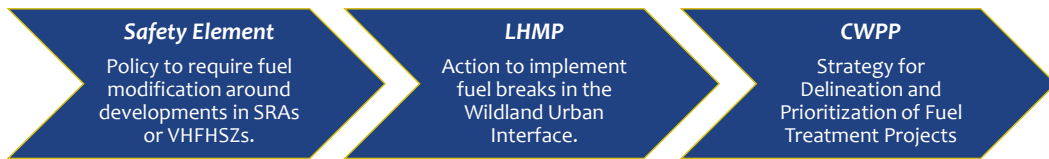
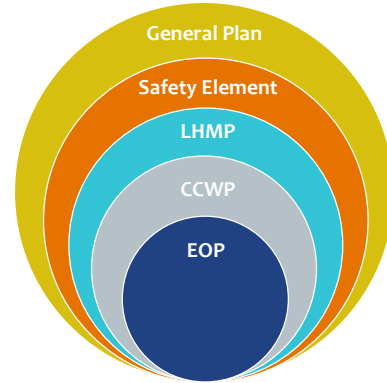
① Start presenting to display the poll results on this slide.

30

30

Plan Integration

- Housing Element (2022)
- Safety Element (2023)
 - Climate Vulnerability Assessment
- LHMP (2018, Update Anticipated 2024)
- Community Wildfire Protection Plans
 - West Slope CWPP (2021)
 - Tahoe Basin CWPP (Update 2023-2024)
- Emergency Operations Plan (2022)



31

Schedule and Next Steps

	Deliverable Description	Date
Draft Safety Element	Safety Element Workshop #1	September 14, 2023
	Initial Cal Fire Land Use Planning Meeting – General Plan Safety Element Assessment	September 19, 2023
	County Review of Revised SEAC Draft Safety Element (incorporation of Stakeholder comments)	October 27, 2023
	Circulate Public Review Draft Safety Element	November 3, 2023
	Joint Planning Commission & Board of Supervisors (BOS) Workshop	November 14, 2023
Administrative and Public Review Draft Safety Element	SEAC Work Session #5	TBD – November 2023
	Formal Tribal Engagement Starts (90 days from when Notice to request consultation)	November 2023
	Advertise Release of Public Review Draft Safety Element	November 2023
	Circulate Public Review Draft Safety Element	December 2023
	Public Review for Draft Safety Element	30 to 45 days
	Safety Element Workshop #2	TBD – Dec. 2023/Jan. 2024
	California Department of Geological Survey Review (45 days prior to adoption)	30 days
	California Board of Forestry and Fire Protection & Local Fire Protection District Review (90 days prior to adoption)	90 days
Planning Commission & Board of Supervisors Meetings	January/February 2024	

32

Outreach & Engagement Opportunities



- Repository for CVA and Safety Element documents, resources, and FAQs.
- Link to sign up for email updates.

Website



- Bi-lingual survey circulated to inform the Climate Vulnerability Assessment
- Opportunity to share feedback about community concerns around climate change and adaptation.

Online Survey



- Multiple Virtual Workshops to learn about the project, ask questions, participate in polls, and provide feedback.
- Upcoming Board of Supervisors/Planning Commission Meetings

Workshops



- Press Releases about events
- Public Notices
- Announcements for Workshops
- Update Notifications
- Flyers

Social Media

<https://edcgov.us/Government/longrangeplanning/general-plan-safety-element-update>



33

Public Feedback & Questions

Thea A. Graybill
Senior Planner
County of El Dorado Planning and Building Department
thea.graybill@edcgov.us
(530) 573-7908

Juliana Prospero, AICP, LEED AP
Project Manager
WSP Environment & Infrastructure, Inc.
juliana.prospero@wsp.com
(916) 636-3200

Safety Element Update Webpage:
<https://www.edcgov.us/Government/longrangeplanning/Pages/General-Plan-Safety-Element-Update.aspx>



34

