

What is Integrated Regional Water Management?

Integrated Regional Water Management (IRWM) is a collaborative effort to identify and implement water management solutions on a regional scale that increase regional self-reliance, reduce conflict, and manage water to concurrently achieve social, environmental, and economic objectives. This approach delivers higher value for investments by considering all interests, providing multiple benefits, and working across jurisdictional boundaries. Benefits include improved water quality, better flood management, restored and enhanced ecosystems, and more reliable surface and groundwater supplies.

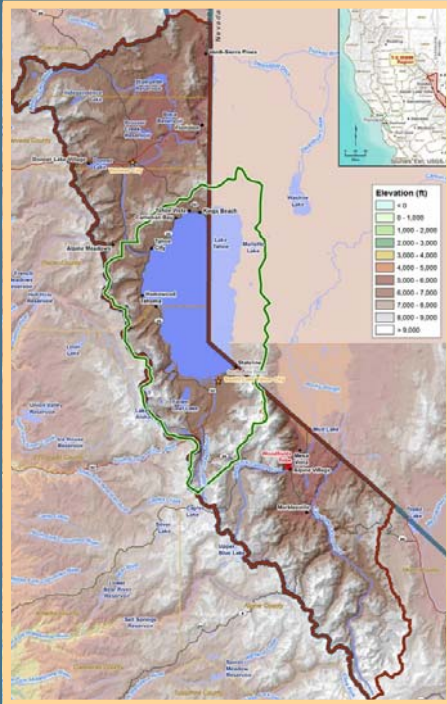
Tahoe Sierra Integrated Regional Water Management Stakeholders

Alpine County—Alpine Springs County Water District—Alpine Watershed Group—American Rivers—California Trout—California Department of Transportation—California Tahoe Conservancy—Carson Water Subconservancy District—City of South Lake Tahoe—Department of Water Resources—El Dorado County—Eldorado County Water Agency—Environmental Protection Agency—Trout Unlimited—Friends of Hope Valley—Friends of Squaw Creek—Lahontan Regional Water Quality Control Board—Forest Service—Lakeside Park Association—Lukins Brothers Water Company—Lake Tahoe Unified School District—Markleeville PUD—Markleeville Water Company—Natural Resources Conservation District—North Tahoe PUD—Placer County—Sierra County—Sierra County DOT—Sierra County Fire Safe and Watershed Council—Sierra Nevada Conservancy—Sierra Watershed Education Partnerships—South Tahoe PUD—Squaw Valley PSD—St. Joseph's Community Land Trust—Tahoe City PUD—Tahoe Regional Planning Agency—Tahoe Resource Conservation District—Tahoe-Truckee Sanitation Agency—Tahoe Truckee USD—Town of Truckee—Truckee Donner Land Trust—Truckee Donner PUD—Truckee River Basin Water Group—Truckee River Watershed Council—Truckee Sanitary District—Truckee Trails Foundation—UC Davis TERC—Vail Resorts—Washoe Tribe of Nevada and California

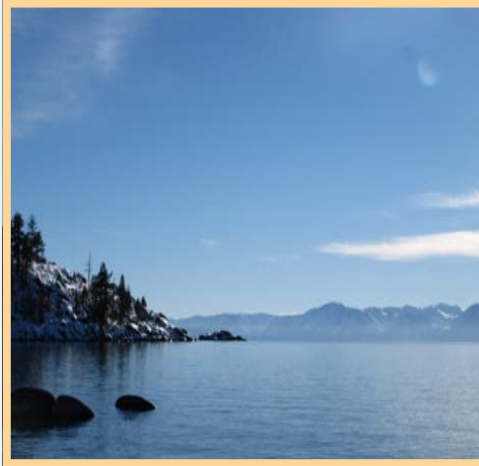


Tahoe-Sierra Integrated
Regional Water Management Planning

The Tahoe-Sierra IRWM Region



The Tahoe-Sierra Region encompasses approximately 800,000 acres and is defined by the Little Truckee River, Truckee River, Carson River, and the Lake Tahoe (Ca.) watershed in the Eastern Sierra Nevada mountain range. It includes the eastern parts of Alpine, El Dorado, Placer, and Nevada Counties, and the southeastern corner of Sierra County.



Learn More!

To learn more about the TSIRWM Group, the planning process, including the 2019 TSIRWM Adopted Plan, as well as the collaborative projects that are benefitting the Region, visit: tahoesierrairwm.com

IRWMP Grant Programs

Planning Grants have helped the TSIRWM partners identify strategies and projects to address the unique needs of the region. **Implementation Grants** have helped to complete a variety of multi-benefit water projects, including the following:

- Lake Tahoe Nearshore Aquatic Invasive Plant Control
- Lake Tahoe Schoolyard Environmental Best Management Practices Implementation
- South Tahoe Public Utility District/Markleeville Water Company Waterline Replacement Projects
- Polaris Creek Wetland/Stream Environment Zone (SEZ) Restoration
- Regional Water Conservation Programs (Lakeside Mutual Water Co., Lukins Brothers Water Co., North Tahoe PUD, South Tahoe PUD, Tahoe City PUD, Squaw Valley PUD)
- Water Quality Monitoring for the Truckee River
- Trout Creek Restoration
- Truckee River Watershed Voluntary Best Management Practices Retrofits
- Hope Valley Meadow Restoration