



# Mt. Murphy Road Bridge Alternatives Analysis Project

Presented to

Stakeholder Advisory Committee

Meeting #3

Sept. 24, 2014



# Bridge Components

“When the history of our time is written posterity will know us not by a cathedral or temple, but by a bridge.”

- Montgomery Schuyler, 1877,  
writing about John Roebling's Brooklyn Bridge

# Bridge Introduction

## 1. Basic Bridge Elements



## 2. Bridge Viewpoints



## 3. Mt. Murphy Bridge Design



# Bridge Substructure - Abutments



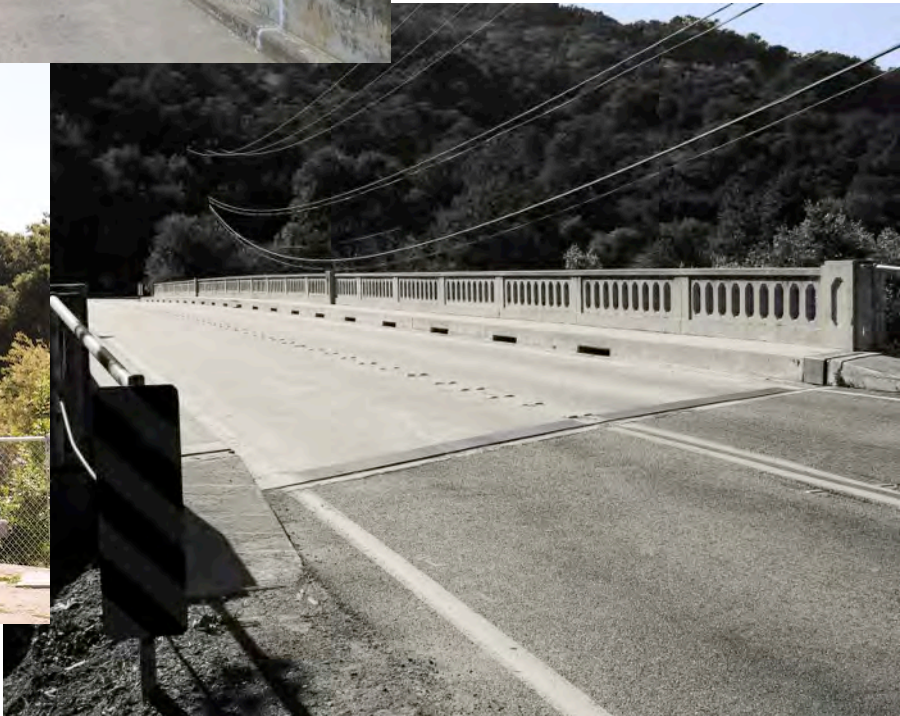
# Bridge Substructure - Piers



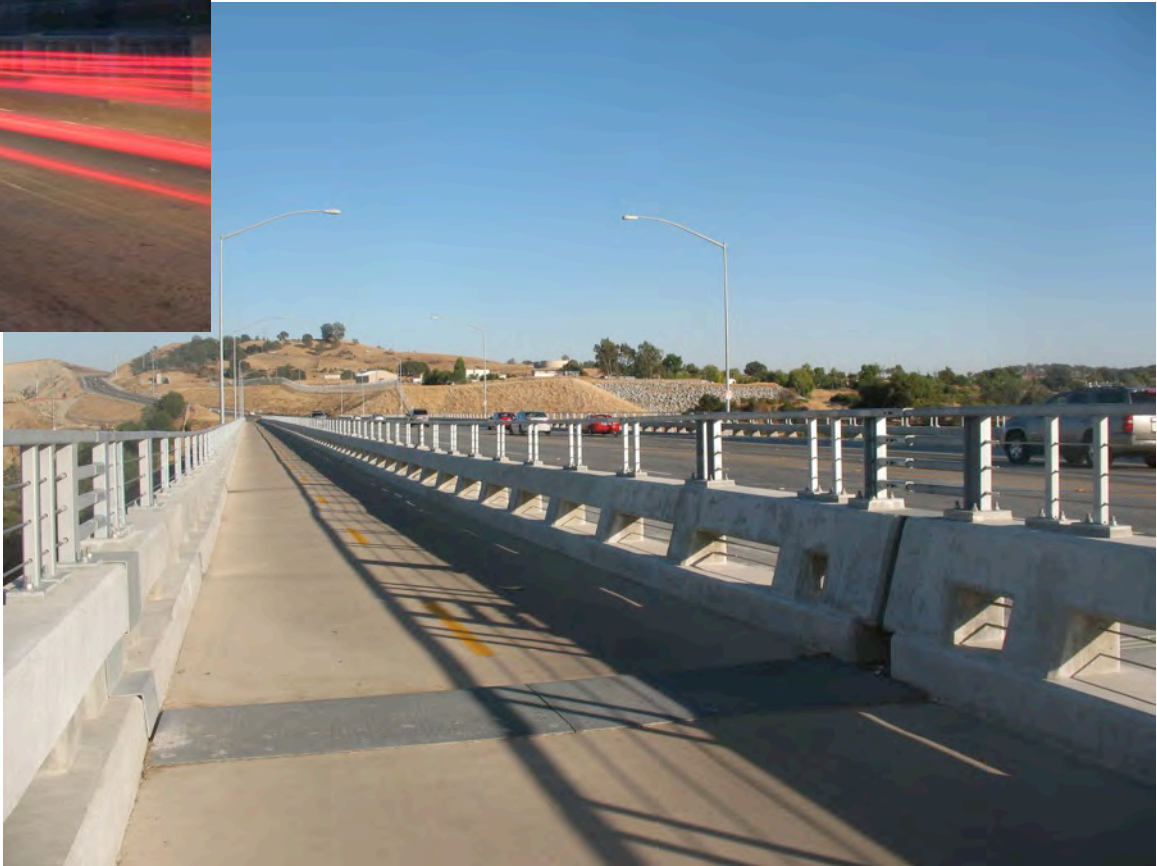
# Bridge Substructure - Spans



# On the Bridge – Vehicle Lanes



# On the Bridge – Pedestrians & Bicyclists

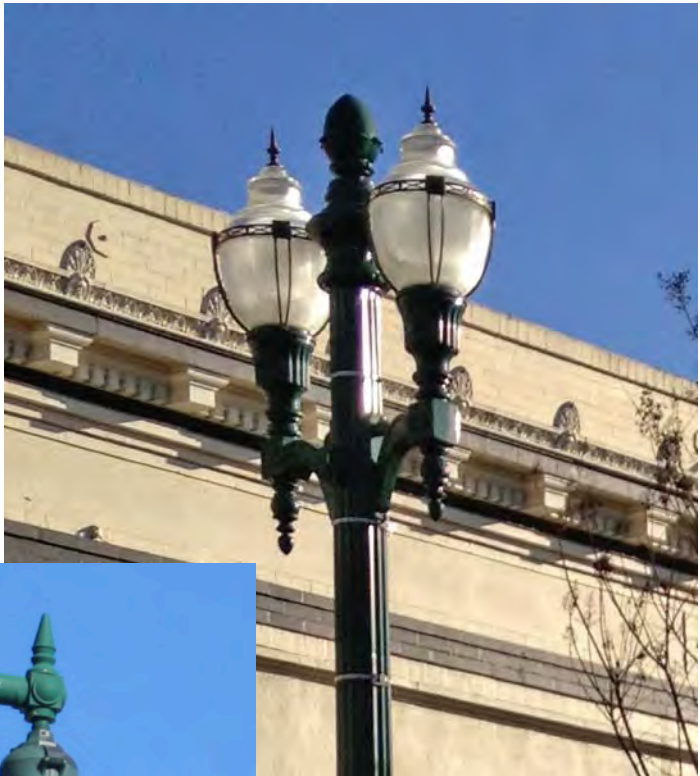




# On the Bridge – Barriers



# On the Bridge – Safety Lighting



# On the Bridge – Traffic Signage



# Bridge Superstructure – Floor Beams



# Bridge Superstructure – Box Beams



# Bridge Superstructure – Trusses



# Bridge Superstructure – Arches

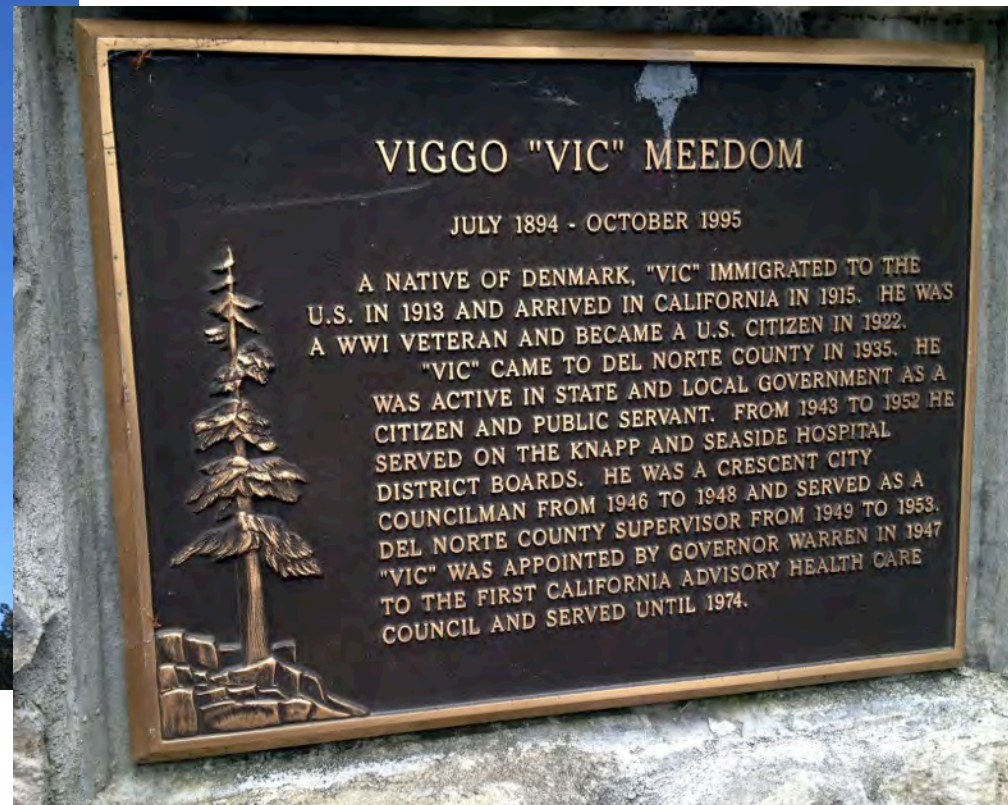


# Bridge Aesthetics – Overlooks

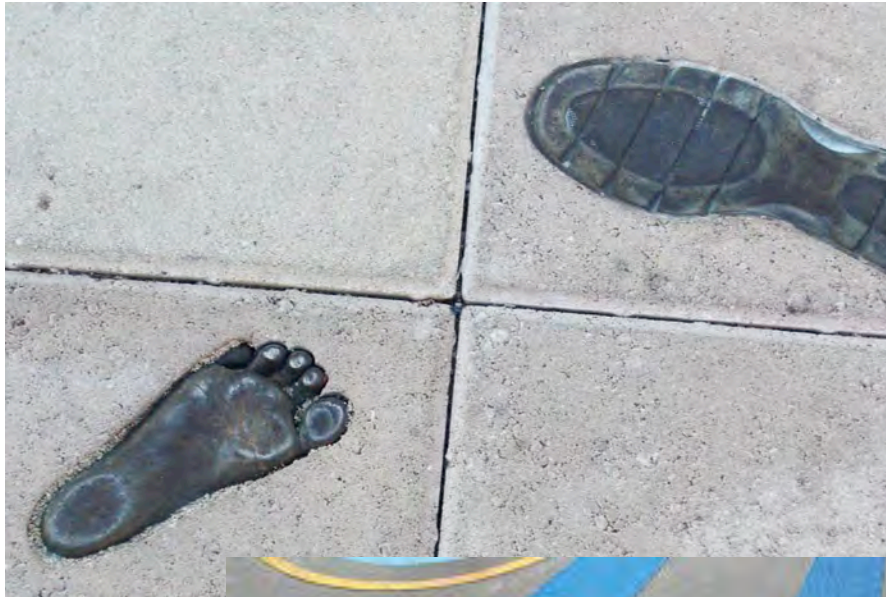




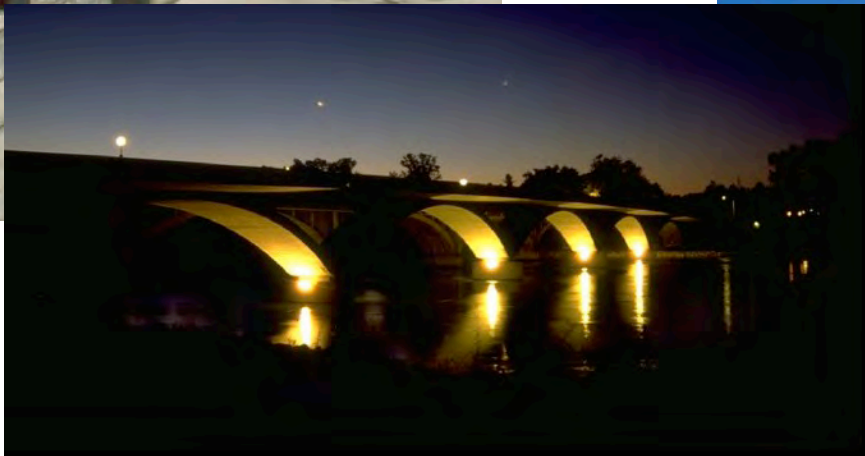
# Bridge Aesthetics – Signage



# Bridge Aesthetics – Public Art



# Bridge Aesthetics – Lighting



# Bridge Aesthetics – Color



# Bridge Aesthetics – History



# Bridge Viewpoints

“When an individual forms an aesthetic impression of a bridge, where the bridge is viewed *from* will strongly affect his or her impression.”

“Since the viewer’s aesthetic reactions to the bridge will be almost completely created by his or her visual perceptions, we must be aware that what people *perceive* is not always what is *there*.”

- Frederick Gottemoeller, 1998

# Bridge Viewpoints – Vehicle Drivers



# Bridge Viewpoints – Pedestrians





# Bridge Viewpoints – Bicyclists



# Bridge Viewpoints – River Users



# Bridge Viewpoints – River Users



# Bridge Viewpoints – Looking From a Bridge



# Bridge Viewpoints – Looking Up or Downstream from New Location




# Bridge Viewpoints – From Afar



# Bridge Design - Timeline



 Opportunity for public comment

# Bridge Design - Tools

