

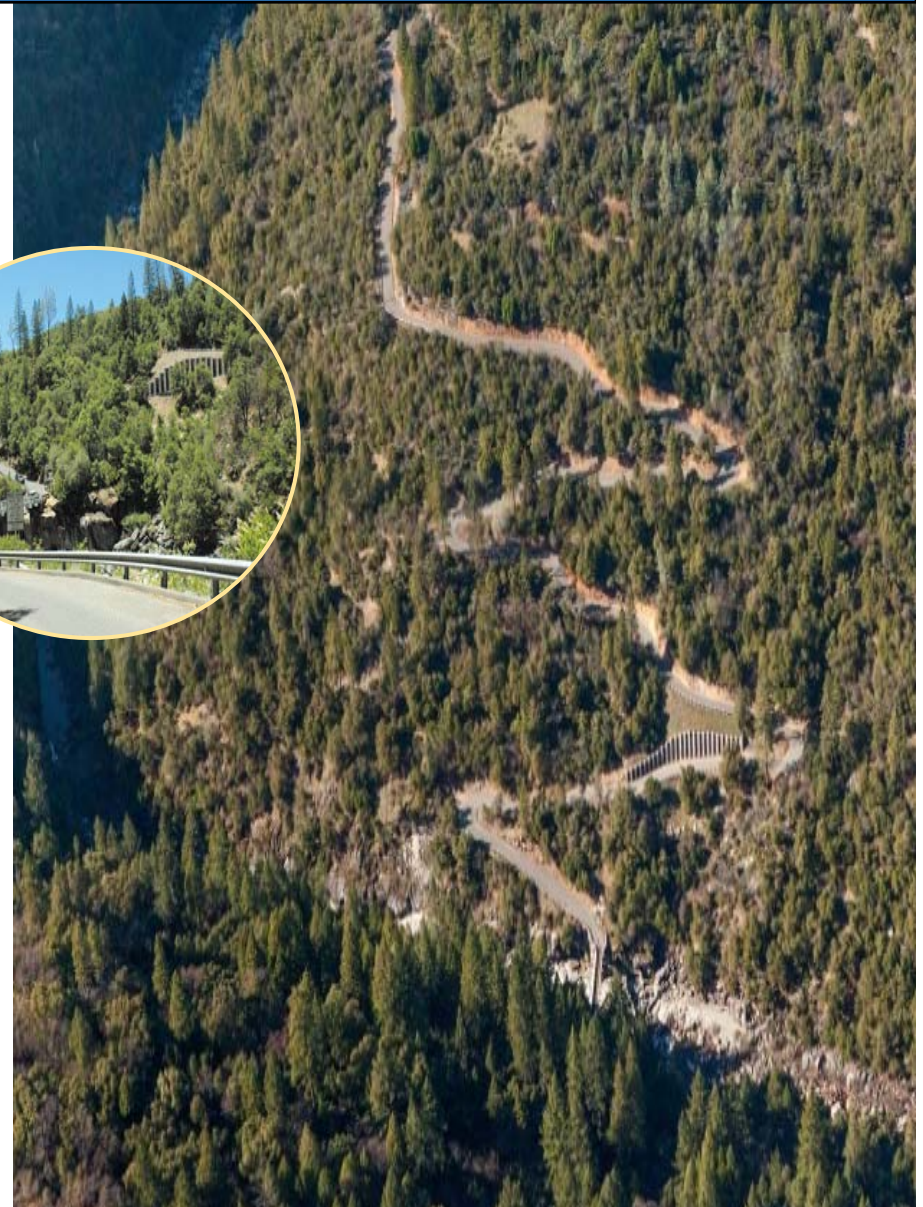


COUNTY OF EL DORADO
TRANSPORTATION DEPARTMENT

Mosquito Road Bridge

At the South Fork of the American River

PUBLIC WORKSHOP No. 3
NOP Scoping Meeting



ALTERNATIVES for FINAL STUDY

In Association With:



July 15, 2015



AGENDA

→ **Welcome / Introductions** Matt Smeltzer, Co.

WHERE WE'VE BEEN Howard Michael, Quincy

→ **Recap Work to Last Workshop**

→ **Alt. Development Since Last Workshop**

→ **Begin Environmental Process**

WHERE WE ARE Janet Postlewait, County

→ **Overview of Environmental Process**

WHERE WE'RE GOING Jon Balzer, County

→ **Next Steps**

→ **Open House Period**





AGENDA

→ **Welcome / Introductions** Matt Smeltzer, Co.

WHERE WE'VE BEEN Howard Michael, Quincy

- Recap Work to Last Workshop
- Alt. Development Since Last Workshop
- Begin Environmental Process

WHERE WE ARE Janet Postlewait, County

→ Overview of Environmental Process

WHERE WE'RE GOING Jon Balzer, County

- Next Steps
- Open House Period





AGENDA

→ Welcome / Introductions Matt Smeltzer, Co.

WHERE WE'VE BEEN Howard Michael, Quincy

- **Recap Work to Last Workshop**
- **Alt. Development Since Last Workshop**
- **Begin Environmental Process**

WHERE WE ARE Janet Postlewait, County

→ Overview of Environmental Process

WHERE WE'RE GOING Jon Balzer, County

- Next Steps
- Open House Period





AGENDA

→ Welcome / Introductions Matt Smeltzer, Co.

WHERE WE'VE BEEN Howard Michael, Quincy

→ **Recap Work to Last Workshop**

→ Alt. Development Since Last Workshop

→ Begin Environmental Process

WHERE WE ARE Janet Postlewait, County

→ Overview of Environmental Process

WHERE WE'RE GOING Jon Balzer, County

→ Next Steps

→ Open House Period

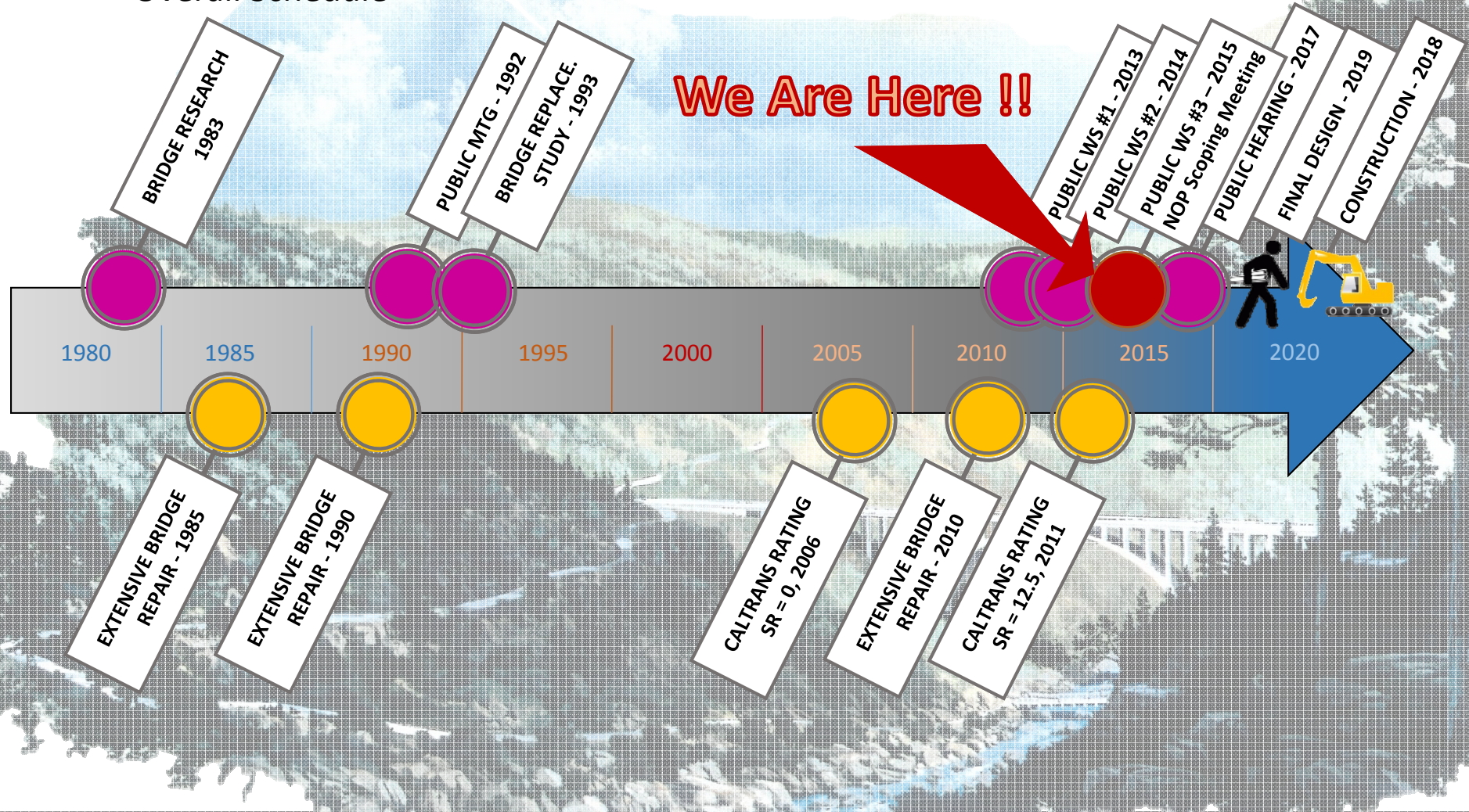




Recap Work to Last Workshop

- Project Development
- Key Bridge Facts

Overall Schedule





Recap Work to Last Workshop

Screening Criteria

- ➔ Criterion – Public Input
- ➔ Criteria Categories
- ➔ Criterion Descriptions

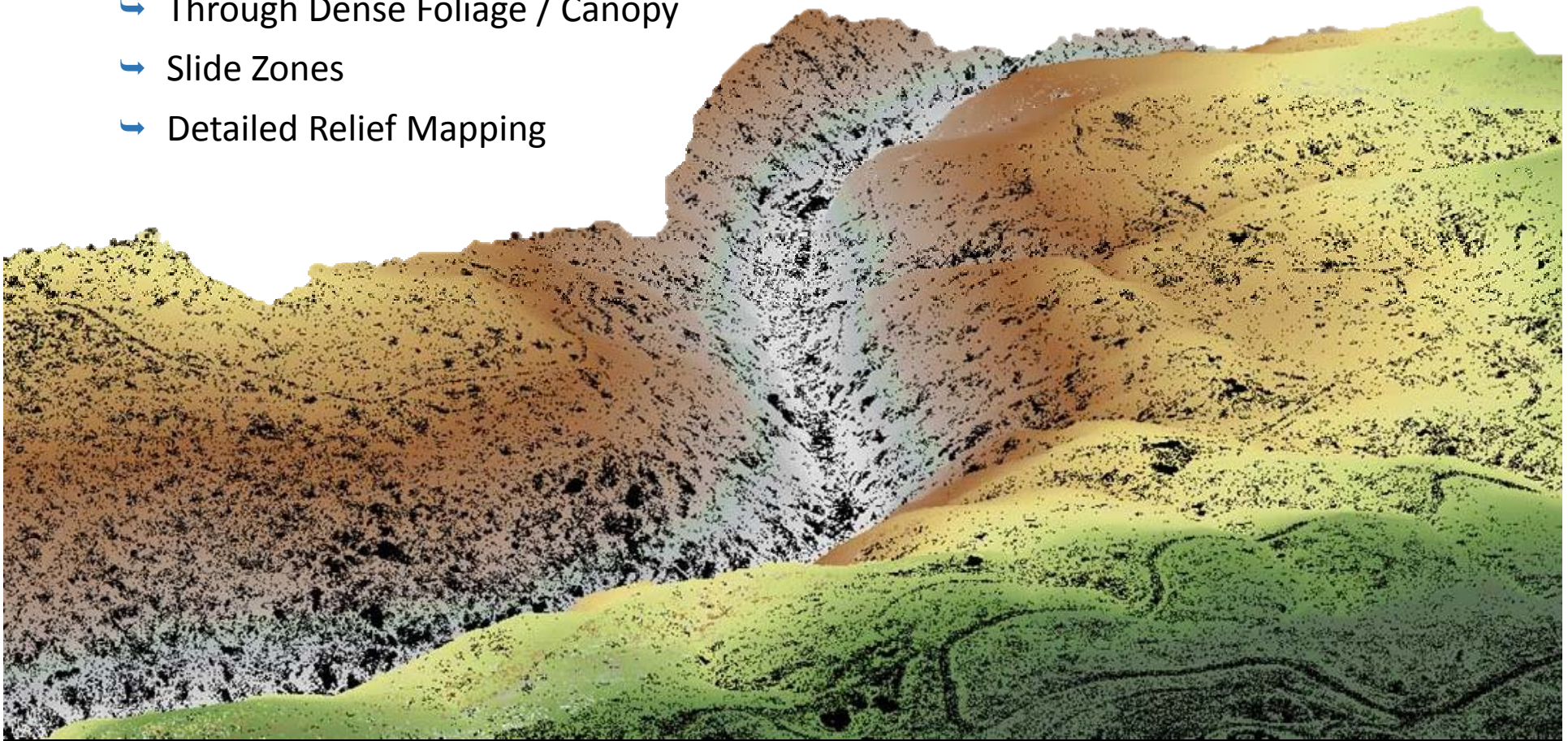
<i>EVALUATION CRITERION by CATEGORY</i>	
<i>CATEGORY / CRITERION</i>	<i>CRITERION DESCRIPTION</i>
VIABILITY OF ALTERNATIVES	
Fundable	Fundable project
General Plan	Consistent with General Plan
Purpose and Need	Satisfies Purpose and Need
Geology	Avoid geological sensitive areas such as critical slide zones
SAFETY and OPERATIONS	
Accidents	Improve safety for motorized transportation crossing the river (bridge and approaches).
Emergency response	Improve opportunities for emergency response access and time.
Evacuation route	Improves emergency route in case of evacuation
Standard geometry	Improves narrow approach roads with switchbacks/hairpin turns/steep grade
Alt transportation modes	Maximize safety for non-motorized transportation (bridge and approaches)
Recreation & river access	Maximize connectivity to trails and river access
Bridge washout	Avoid washout from dam break
Long-term maintenance	Avoid bridge types involving long-term maintenance
CONSTRUCTION TRAFFIC HANDLING	
Off-site detour	Minimize use of 16 mile detour during construction
On-site detour	Minimize use of localized detour around construction especially with single lane traffic control
Maintain traffic	Maximize ability to keep existing bridge open during construction
Access	Ease of access for construction
COMMUNITY CHARACTER	
Bridge Placement	Maximize blending of bridge placement into existing rural setting
Bridge Design	Maximize blending of bridge design into existing rural setting
ENVIRONMENTAL/GEOTECHNICAL RESOURCES	
Wildlife	Minimize impacts to wildlife habitat (turtle, eagle, river corridor wildlife)
Geology	Avoid geological sensitive areas such as slide zones
View shed from bridge	Minimize impacts to view shed from the bridge (focus on location and not bridge type)
View shed of bridge	Minimize impacts to view shed of the bridge (focus on location and not bridge type)
Cultural resources	Minimize physical impacts to cultural/historic resources
RIGHT-OF-WAY	
Land owners	Minimize impacts to private land owners
Land acquisition	Minimize acquisition area or private properties
# of acquisitions	Minimize acquisition from private property owners
Mineral rights	Avoids properties with underlying mineral rights
ALTERNATIVE BENEFIT / COST	
Cost/Benefit	Minimize cost of project to ensure full funding through the HBP program. Maximize project cost benefit



Recap Work to Last Workshop

Lidar Survey

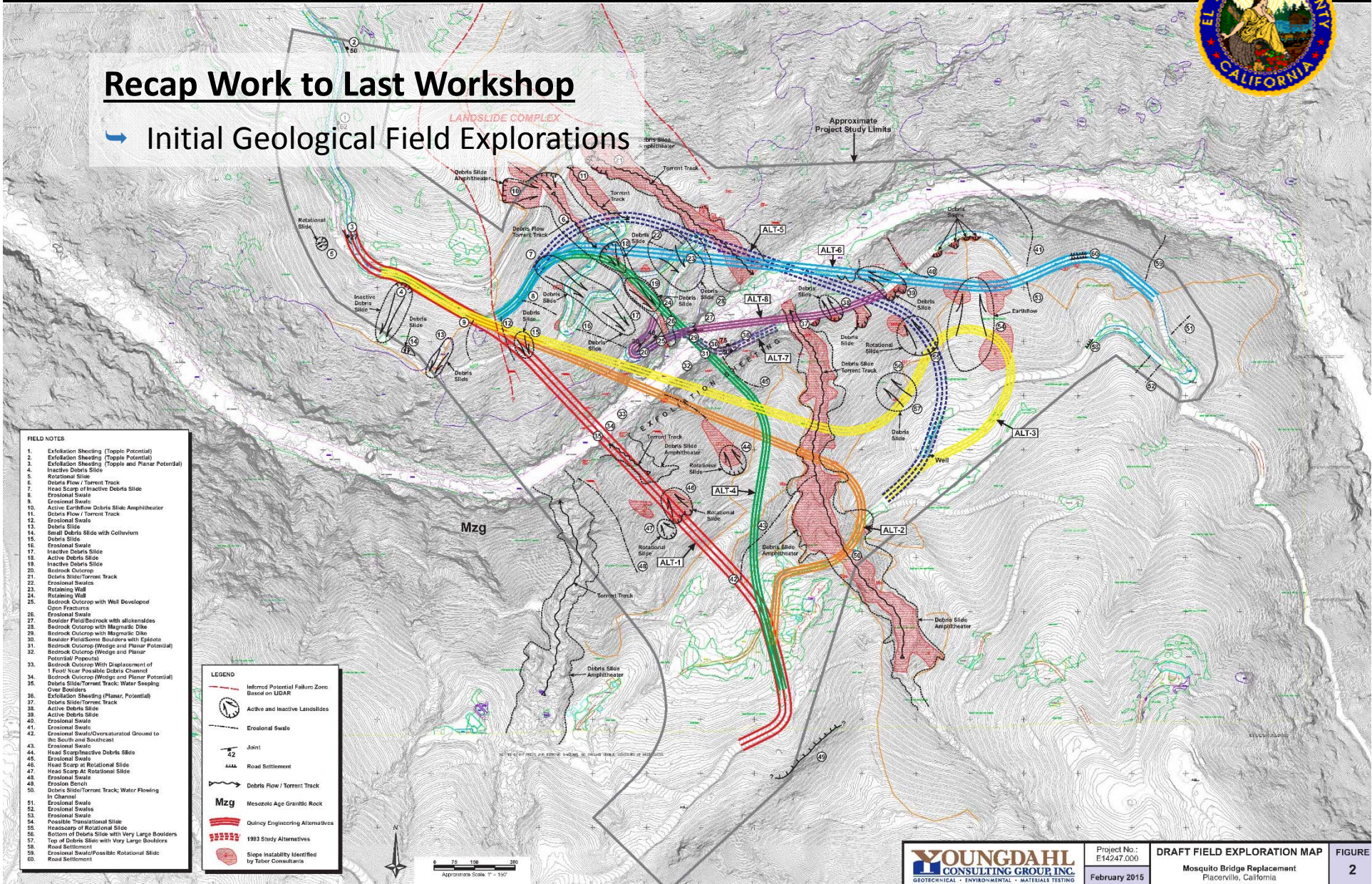
- High Resolution 3D Surface Mapping
- Through Dense Foliage / Canopy
- Slide Zones
- Detailed Relief Mapping





Recap Work to Last Workshop

Initial Geological Field Explorations



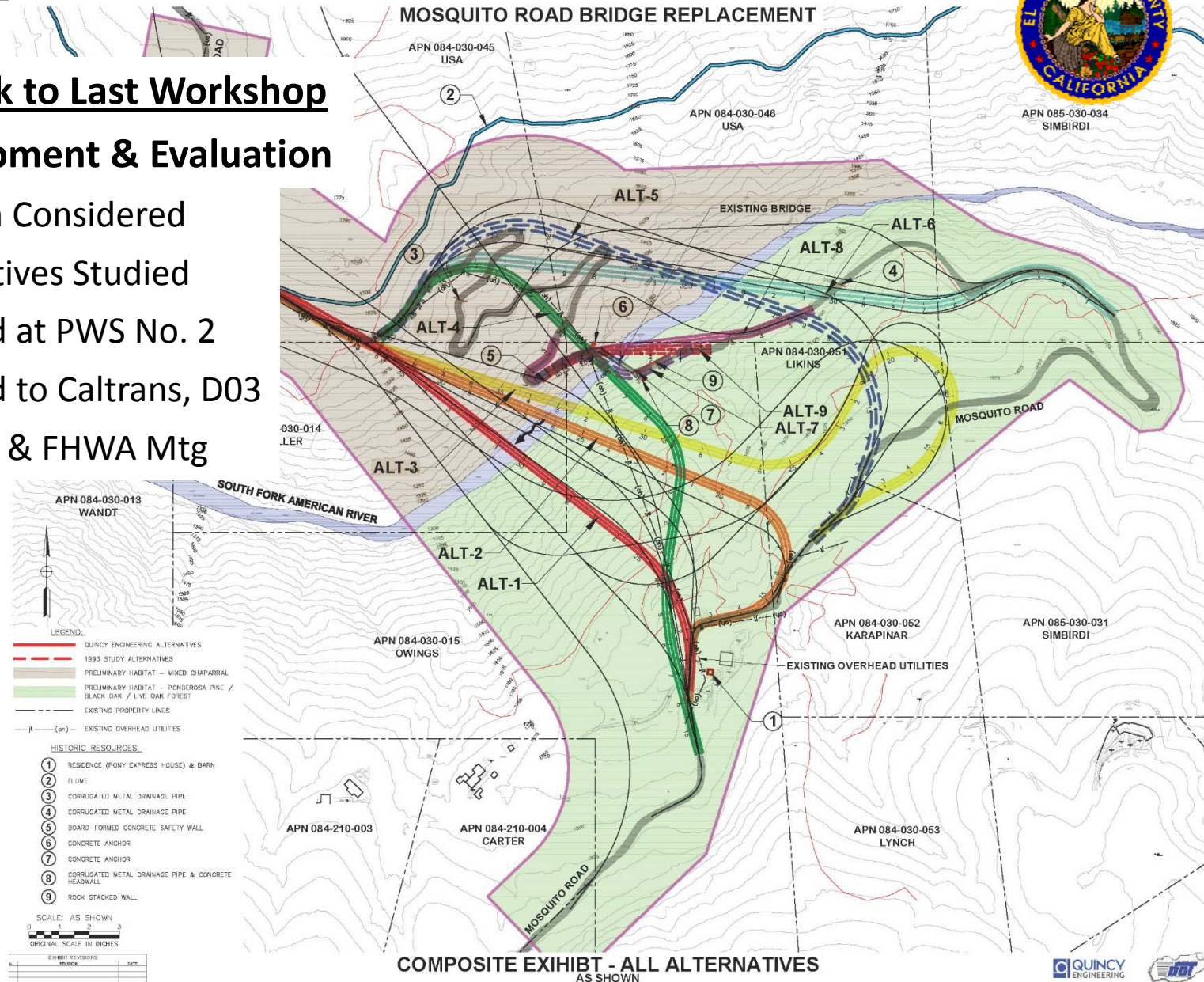
Mosquito Road Bridge – Alternatives for Final Study



Recap Work to Last Workshop

Alt Development & Evaluation

- ➔ > 20 Align Considered
- ➔ 9 Alternatives Studied
- ➔ Presented at PWS No. 2
- ➔ Presented to Caltrans, D03
- ➔ Setup HQ & FHWA Mtg





AGENDA

→ Welcome / Introductions Matt Smeltzer, Co.

WHERE WE'VE BEEN Howard Michael, Quincy

→ Recap Work to Last Workshop

→ **Alt. Development Since Last Workshop**

→ Begin Environmental Process

WHERE WE ARE Janet Postlewait, County

→ Overview of Environmental Process

WHERE WE'RE GOING Jon Balzer, County

→ Next Steps

→ Open House Period

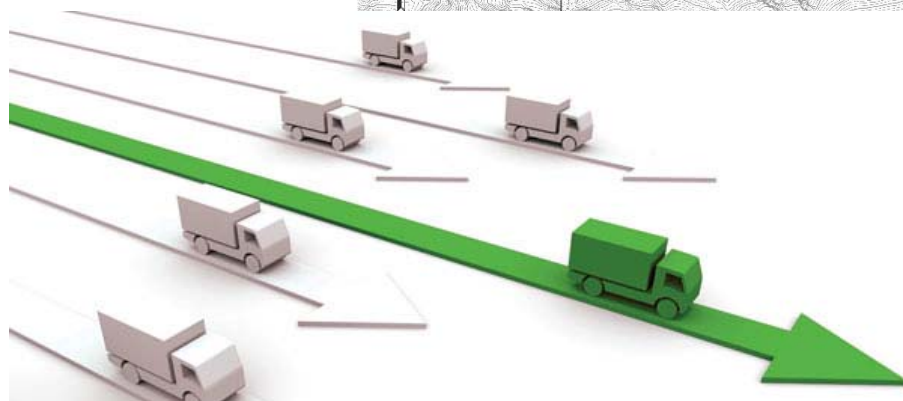
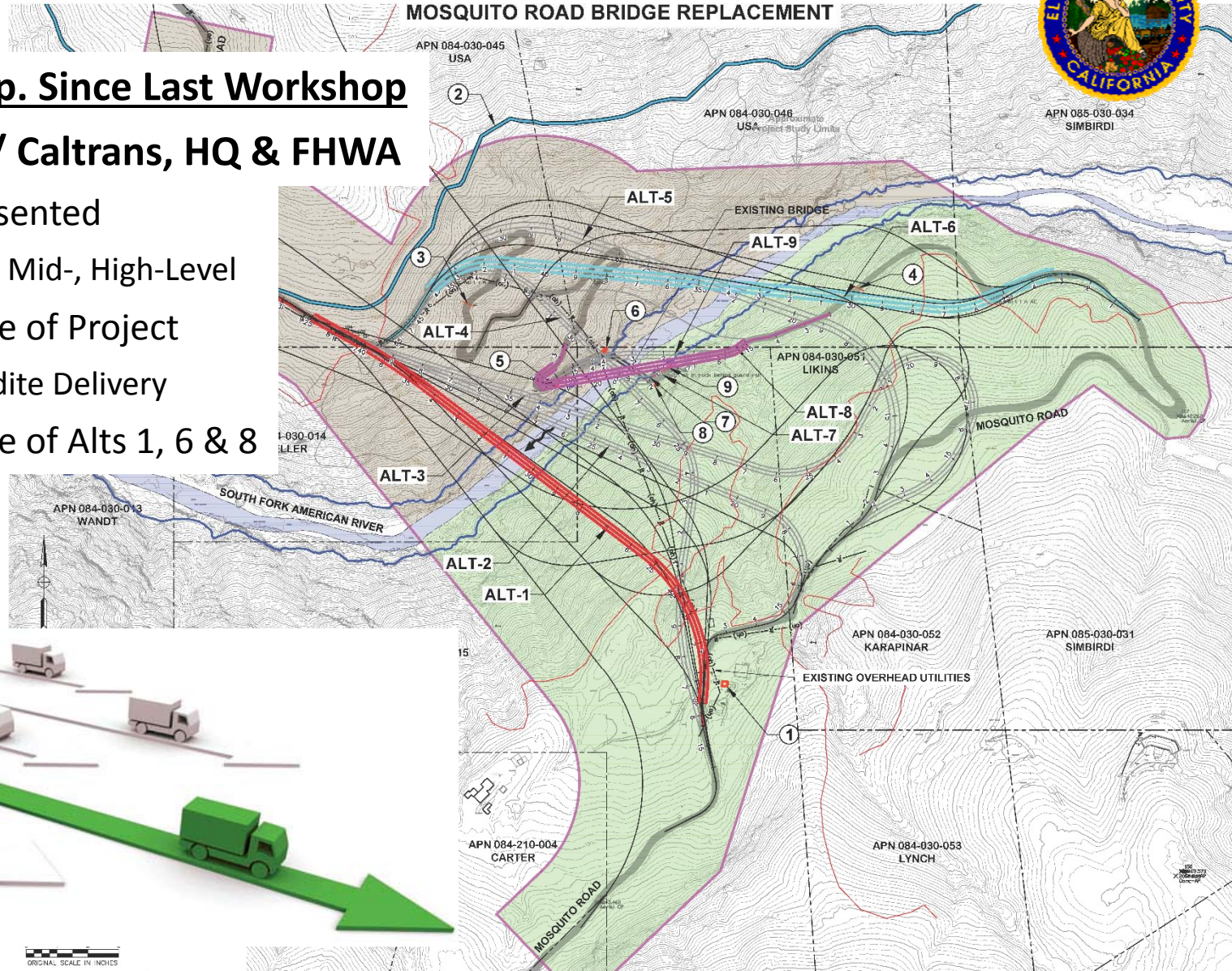


Mosquito Road Bridge – Alternatives for Final Study



Alt. Develop. Since Last Workshop Meeting w/ Caltrans, HQ & FHWA

- ➔ 3 Alts Presented
 - Low-, Mid-, High-Level
- ➔ Supportive of Project
 - Expedite Delivery
- ➔ Supportive of Alts 1, 6 & 8



ORIGINAL SCALE IN INCHES

EXHIBIT	PROJECT	DATE

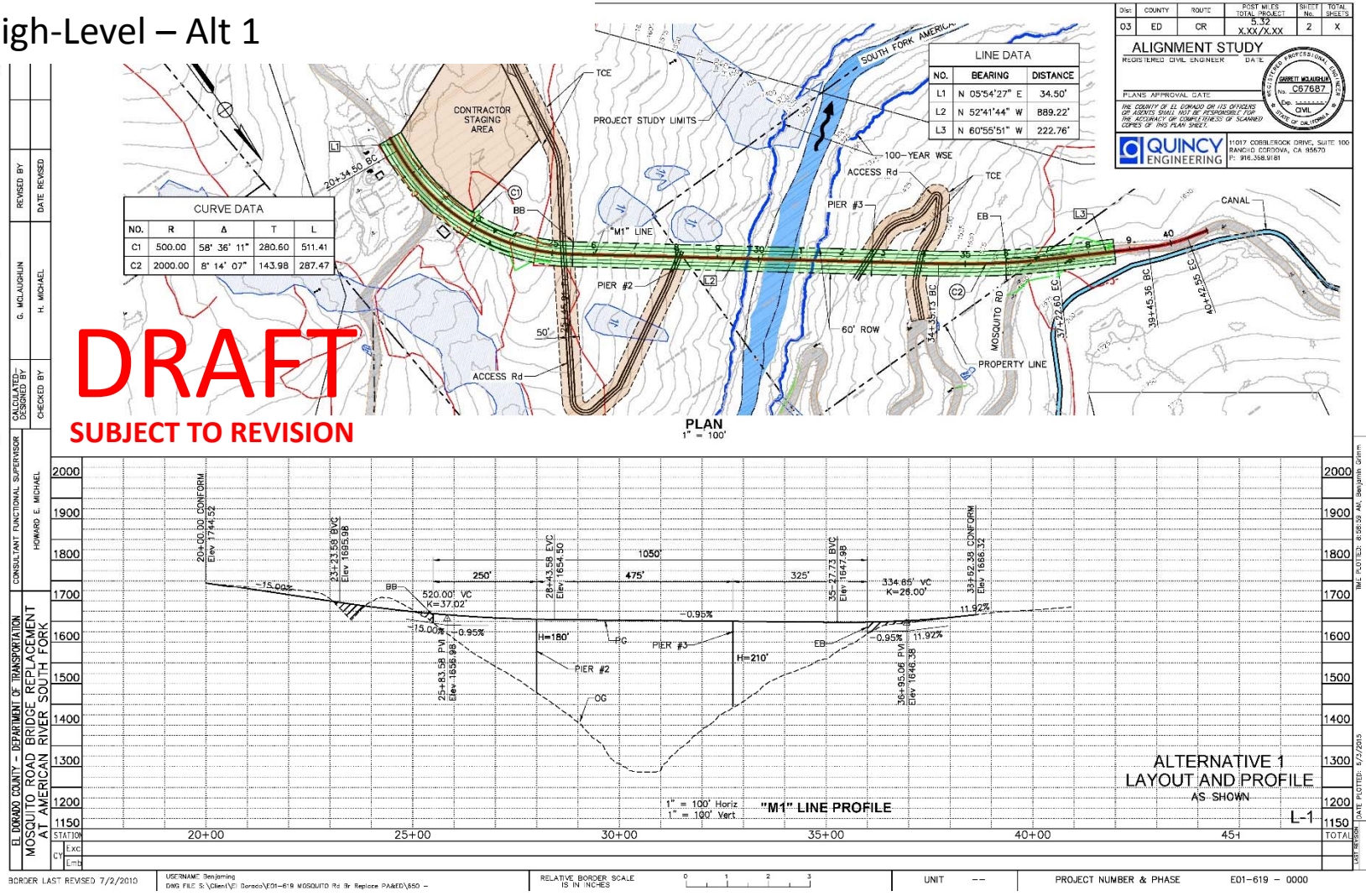
COMPOSITE EXHIBIT - ALL ALTERNATIVES AS SHOWN

Mosquito Road Bridge – Alternatives for Final Study



Alt. Develop. Since Last Workshop

High-Level – Alt 1

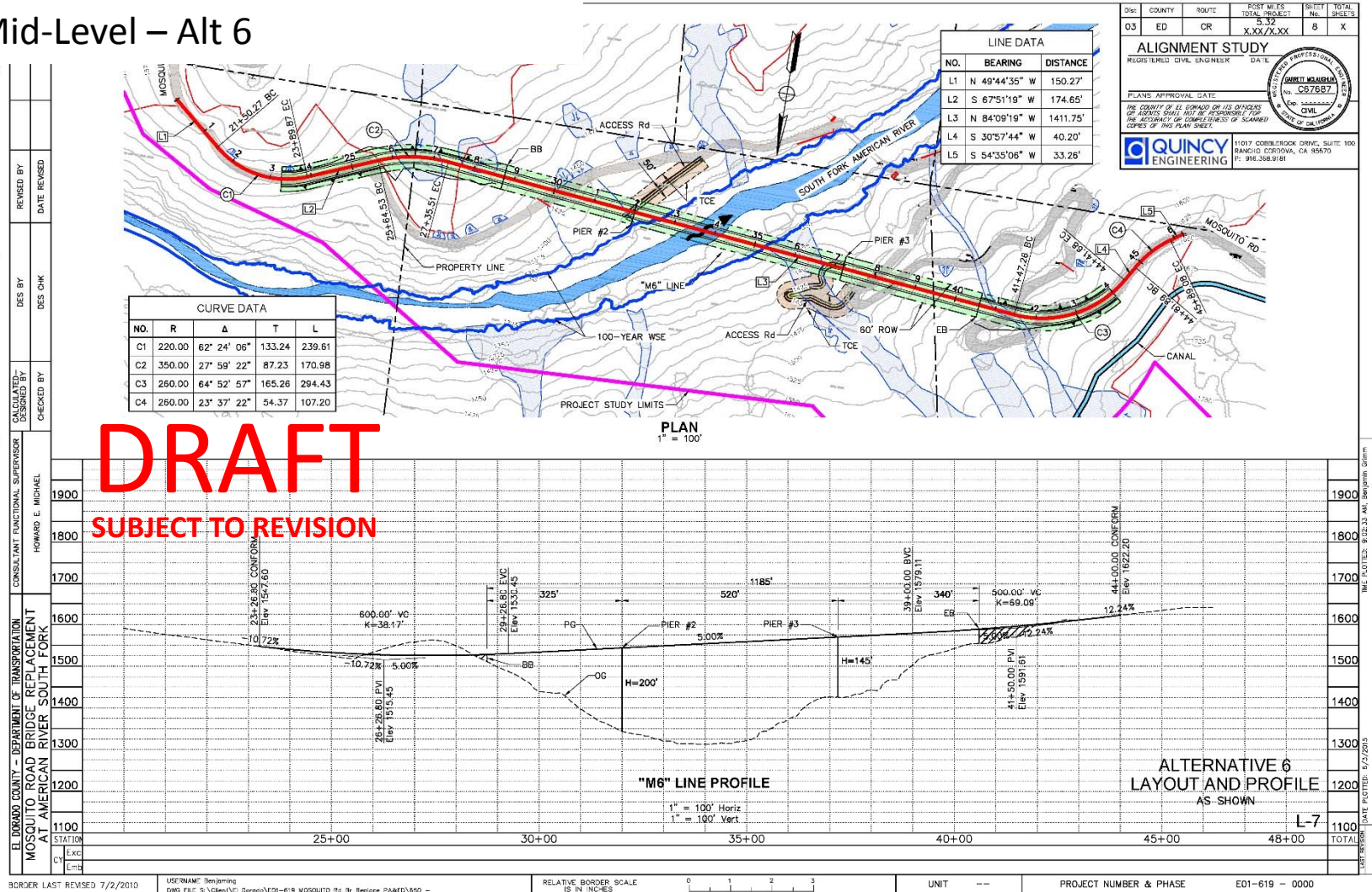


Mosquito Road Bridge – Alternatives for Final Study



Alt. Develop. Since Last Workshop

Mid-Level – Alt 6



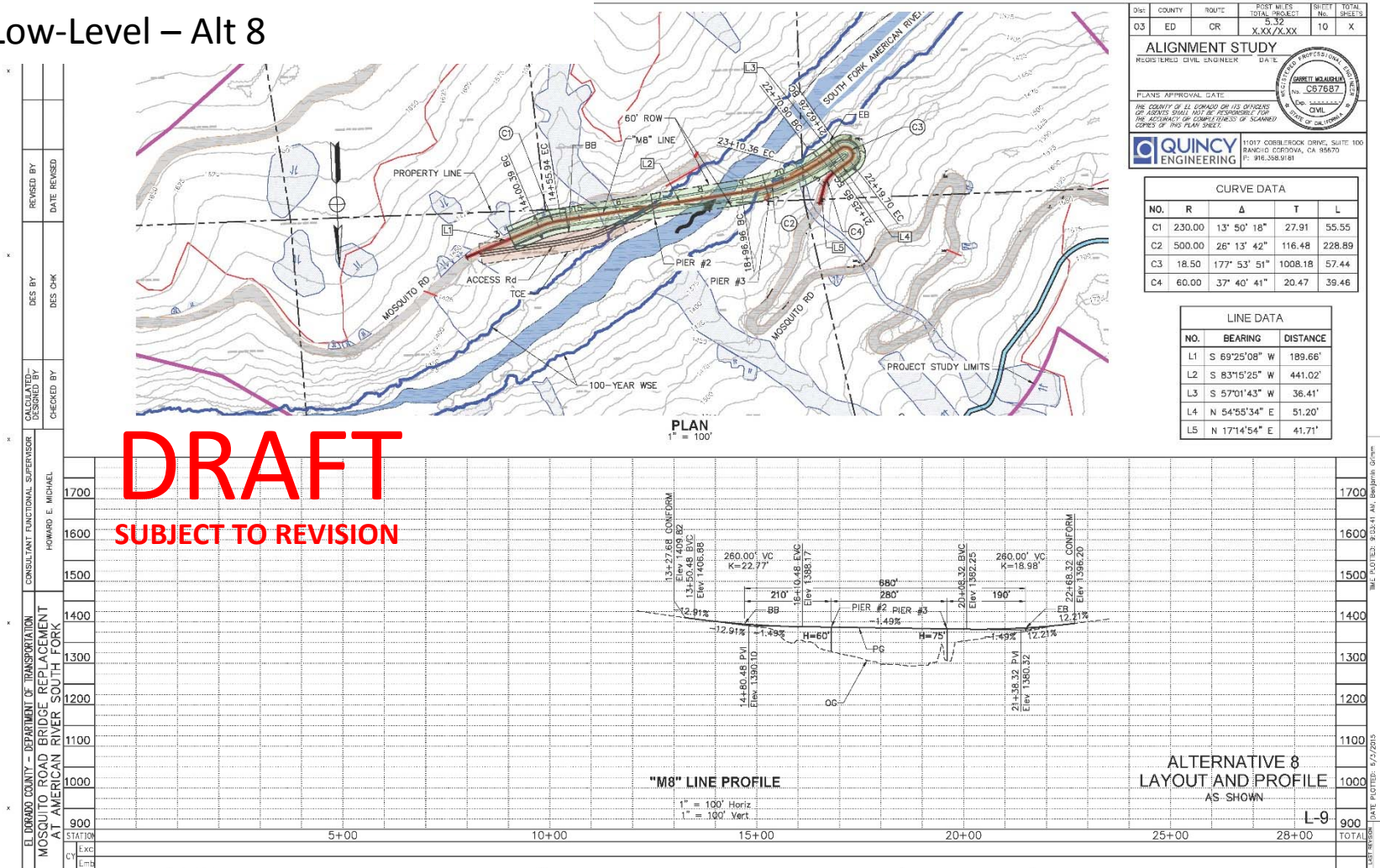
BORDER LAST REVISED 7/2/2010 USER:NAMEC: Desktop10 DWS FILE: S:\Client\VEI Dorado\01-618 MOSQUITO Rd Br Replace PA&D\650 - RELATIVE BORDER SCALE IS IN INCHES UNIT -- PROJECT NUMBER & PHASE E01-619 - 0000

Mosquito Road Bridge – Alternatives for Final Study



Alt. Develop. Since Last Workshop

Low-Level – Alt 8



BORDER LAST REVISED 7/2/2010 USERNAME: D:\proj\01-618 MOSQUITO Rd Br Replace PA&D\650 - RELATIVE BORDER SCALE IS IN INCHES 0 1 2 3 UNIT -- PROJECT NUMBER & PHASE E01-619 - 0000



Alt. Develop. Since Last Workshop
Constructability & Managing Site Constraints

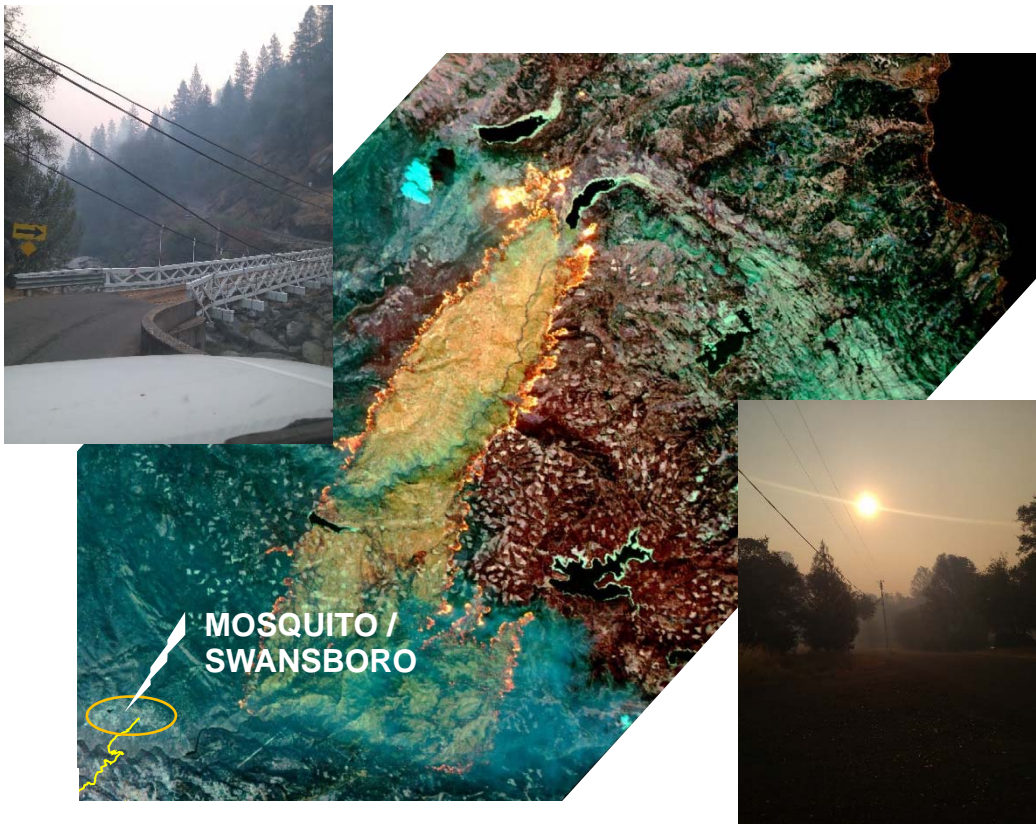
- Slides
- Access Roadways
- Crane Picking





Alt. Develop. Since Last Workshop **Constructability & Managing Site Constraints**

- ➔ Have Two Ways Out
- ➔ Risk Assessment



CAL FIRE'S ADVICE: HAVE 2 WAYS OUT
PREVENTION WEEK OCTOBER 7-13

Share / Save [Facebook icon] [Twitter icon] [LinkedIn icon] [Print icon] [Print friendly version](#)

October 2012 Articles
Fire Prevention Week fire escape escape plan

October 8, 2012 (East County, San Diego) -- It only takes seconds for a fire to grow out of control, making escape from a fire impossible. That's why CAL FIRE is urging people to, "Have 2 Ways Out" of their home. In the event of a fire, remember that every second counts, so you and your family must always be prepared. Escape plans help you get out of your home quickly. Prepare and practice your fire escape plan regularly with everyone in your household, including children and people with disabilities.

CAL FIRE and fire departments across the state are taking this opportunity during Fire Prevention Week to remind all Californians of the importance of creating a fire escape plan for your home and practicing it regularly. Most home fires occur at night when people are the least prepared. Tragedy can be avoided by knowing in advance and practicing two escape routes from each room.

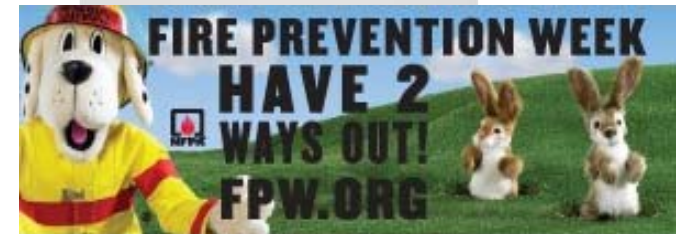
"In 2011, 70 percent of structure fires in California reported to the CAL FIRE-Office of the State Fire Marshal were residential and accounted for 60 percent of fire deaths," said State Fire Marshal Tonya Hoover. "Everyone should take steps to help prevent home fires and ensure their family is protected."

Making an escape plan is simple:

- Draw a map of your home. Mark a door and a window that can be used to get out of every room.
- Choose a meeting place outside in front of your home. This is where everyone can meet after they've safely escaped. Draw a picture of your outside meeting place on your escape plan.
- Write the emergency telephone number for the fire department on your escape plan.
- Check your smoke alarms regularly and have practice escape drills so everyone knows two ways out.

Share / Save [Facebook icon] [Twitter icon] [LinkedIn icon] [Print icon] [Log in or register to post comments](#)

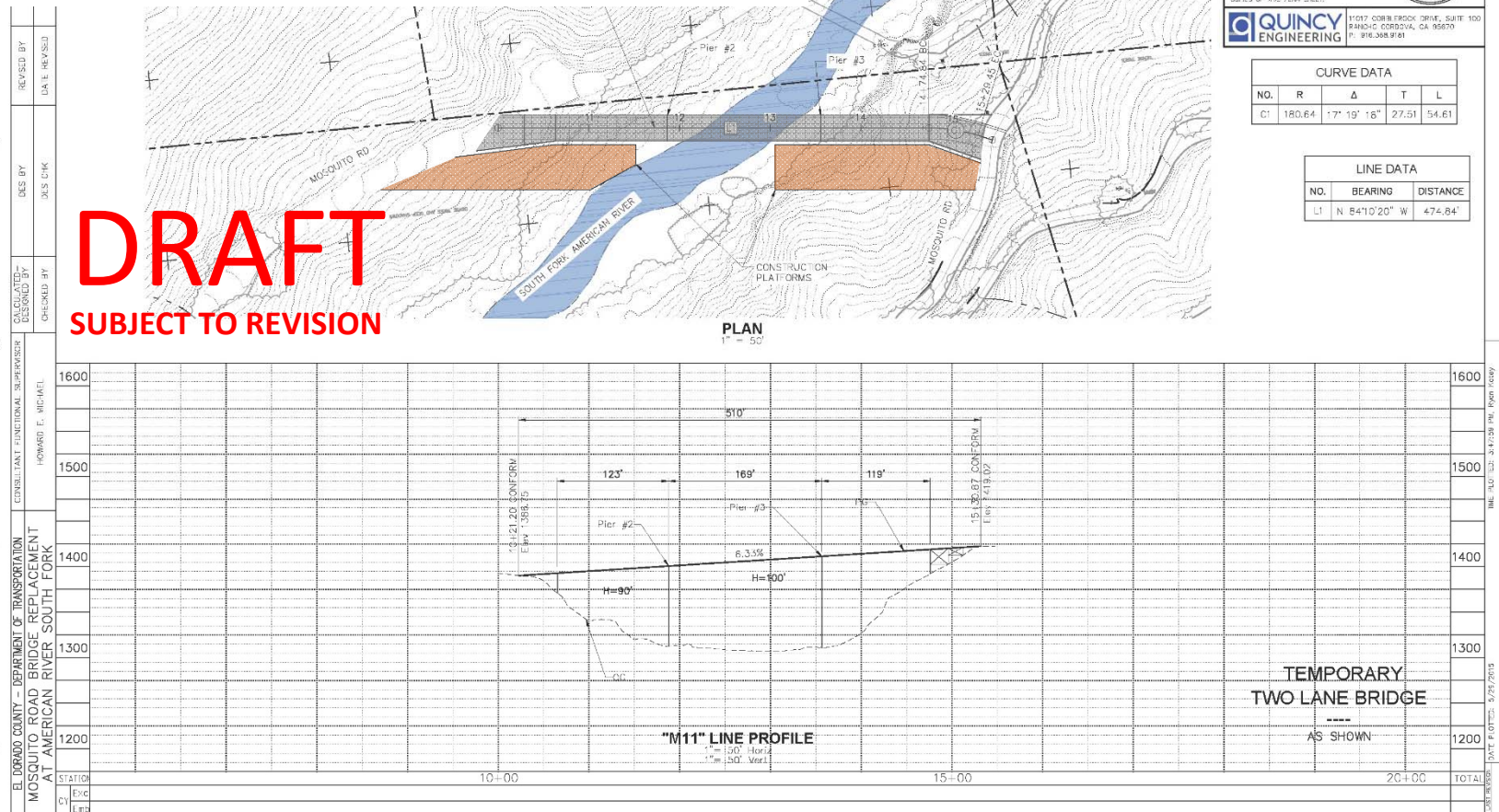
Have Two Ways Out





Alt. Develop. Since Last Workshop Traffic Management Through Construction

➔ Temporary Bridge (Low Level)



PROJECT NUMBER & PHASE: E01-619 - 0000 1100

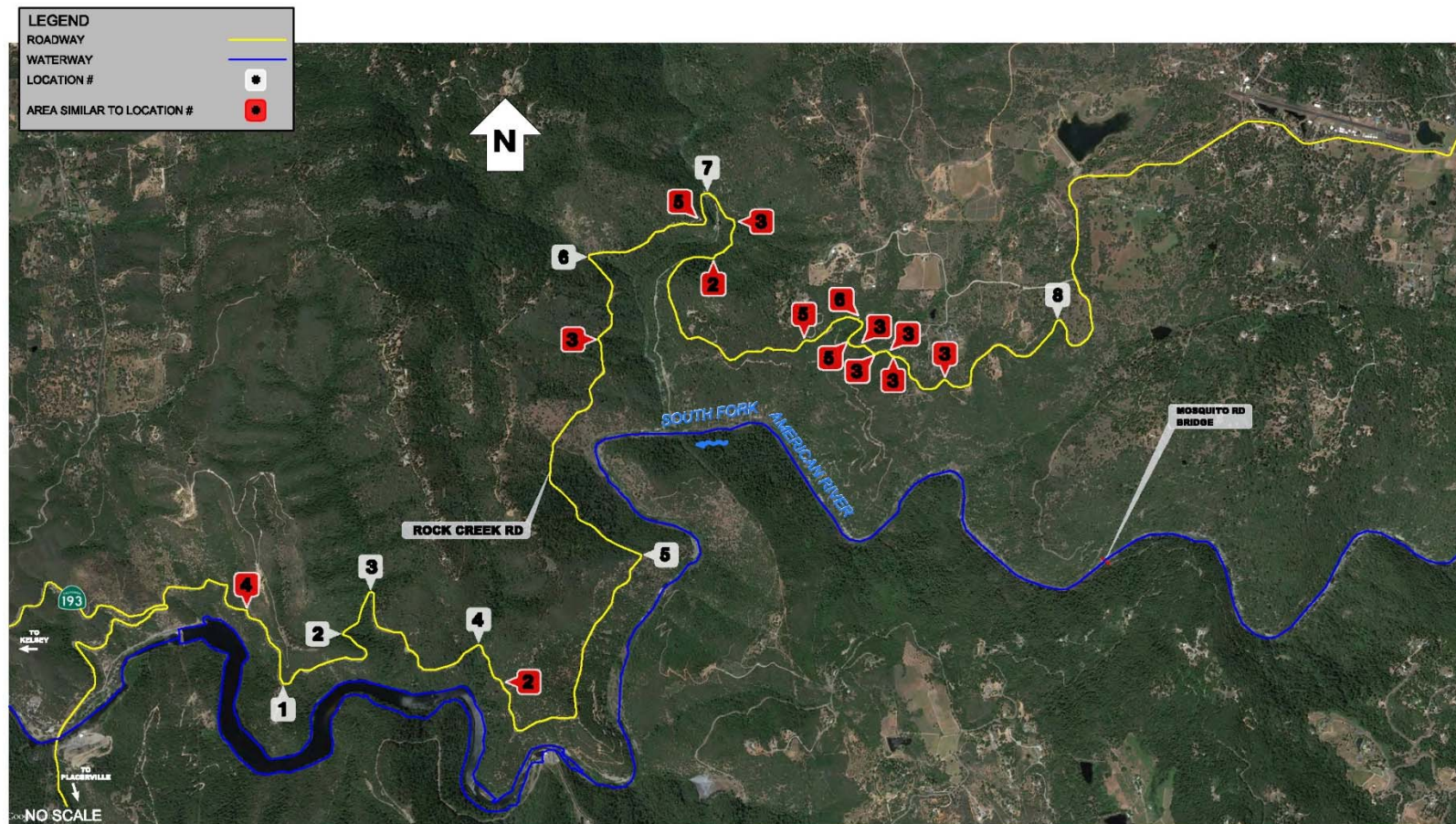




Alt. Develop. Since Last Workshop

Traffic Management Through Construction

→ Rock Creek Road (Low Level)





AGENDA

→ Welcome / Introductions Matt Smeltzer, Co.

WHERE WE'VE BEEN Howard Michael, Quincy

→ Recap Work to Last Workshop

→ Alt. Development Since Last Workshop

→ **Begin Environmental Process**

WHERE WE ARE Janet Postlewait, County

→ Overview of Environmental Process

WHERE WE'RE GOING Jon Balzer, County

→ Next Steps

→ Open House Period



Mosquito Road Bridge – Alternatives for Final Study



Begin Environmental Process – Technical Studies

- ➔ Alternatives 1, 6 & 8 (High, Mid & Low)
- ➔ Environmental Process – NOP Period Began 6/26/15
- ➔ Current “Road Map”



South Fork of the American River

Appendix C

Notice of Completion & Environmental Document Transmittal
 Mail to: Staff Clearinghouse, P.O. Box 3044, Sacramento, CA 95813-3044 (916) 443-0613
 For Hand Delivery/Street Address: 1400 Tooth Street, Sacramento, CA 95814

SCH # _____

Project Title: Mosquito Road Bridge
Lead Agency: El Dorado County Community Development Agency
Contact Person: Janet Pospisilik
Mailng Address: 2852 Falliano Court
Phone: 530-421-5000
City: Placerville
Zip: 95667
County: El Dorado

Project Location: County: El Dorado City/Town Community: Mosquito and Swansboro
Cross Street: 15th
Latitude/Longitude (degrees, minutes and seconds): 38° 46' 33" N 120° 44' 55" W
Total Acres: _____
Assessor's Parcel No.: Various
Section: _____ **Typ:** _____ **Range:** _____ **Base:** _____
Water 2 Misc: State Hwy #: _____ **Warehouses:** South Fork American River
Adjacent: Swansboro County **Railroads:** _____ **Schools:** _____

Document Type:
 CEQA: Initial EIR Final Document
 Final Document
 Fully Cons Supplemental/Subsequent EIR EA Other: _____
 Neg Dec (Prior SCH No.) Other: _____
 Mit. Neg Dec Other: _____

Local Action Type:
 General Plan Update Specific Plan Rezone Alteration
 General Plan Amendment Vision Plan Increase Redevelopment
 General Plan Element Planned Unit Development Use Permit Coastal Permit
 Consistency Plan Site Plan Land Division (Subdivision, etc.) Other project approval

Development Type:
 Residential: Single-Family Acres _____ Employees _____ Transportation: Type: Bridge replacement
 Office: Sq. Ft. _____ Acres _____ Employees _____ Mining: Mixed
 Commercial: Sq. Ft. _____ Acres _____ Employees _____ Power: Type _____ MW
 Industrial: Sq. Ft. _____ Acres _____ Employees _____ Waste Treatment Type: MGD
 Unspecified: _____ Recreational Hazardous Waste Type: _____
 Water Facilities: Type _____ MGD Other _____

Project Issues Discussed in Document:
 Aesthetics/Vision Final Recreation/Parks Vegetation
 Agricultural Land Flood Plains/Flooding Schools/Universities Water Quality
 Air Quality Direct Land Use Impact Sewer Systems Water Supply/On-demand water
 Archeological/Historical Cultural/Historic Sewer Capacity Wetlands/Riparian
 Biological Resources Minerals Soil Erosion/Compaction/Grading Growth Inducement
 Coastal Zone Noise Solid Waste Land Use
 Drainage/Alteration Population/Housing Balance Toxic/Hazardous Cumulative Effects
 Transportation Traffic/Construction Other _____

Present Land Use/Zoning/General Plan Designation:
 Land Use: Rural Natural Resources (UNR) Zoning: Residential Agriculture (RA) Use: Unclassified, Timberland Preserve Zone
 Project Description: (please see separate page if necessary)
 The project includes replacement of the existing bridge and approach structures and must meet the Federal, State, and County safety and design standards in a manner consistent with the transportation needs of the corridor.

Note: The State Clearinghouse will assign identification numbers for each project. If a CEQA number already exists for a project, the State of California or previous agency should be contacted.

Revised 2010

Notice of Preparation



Mosquito Road Bridge – Alternatives for Final Study

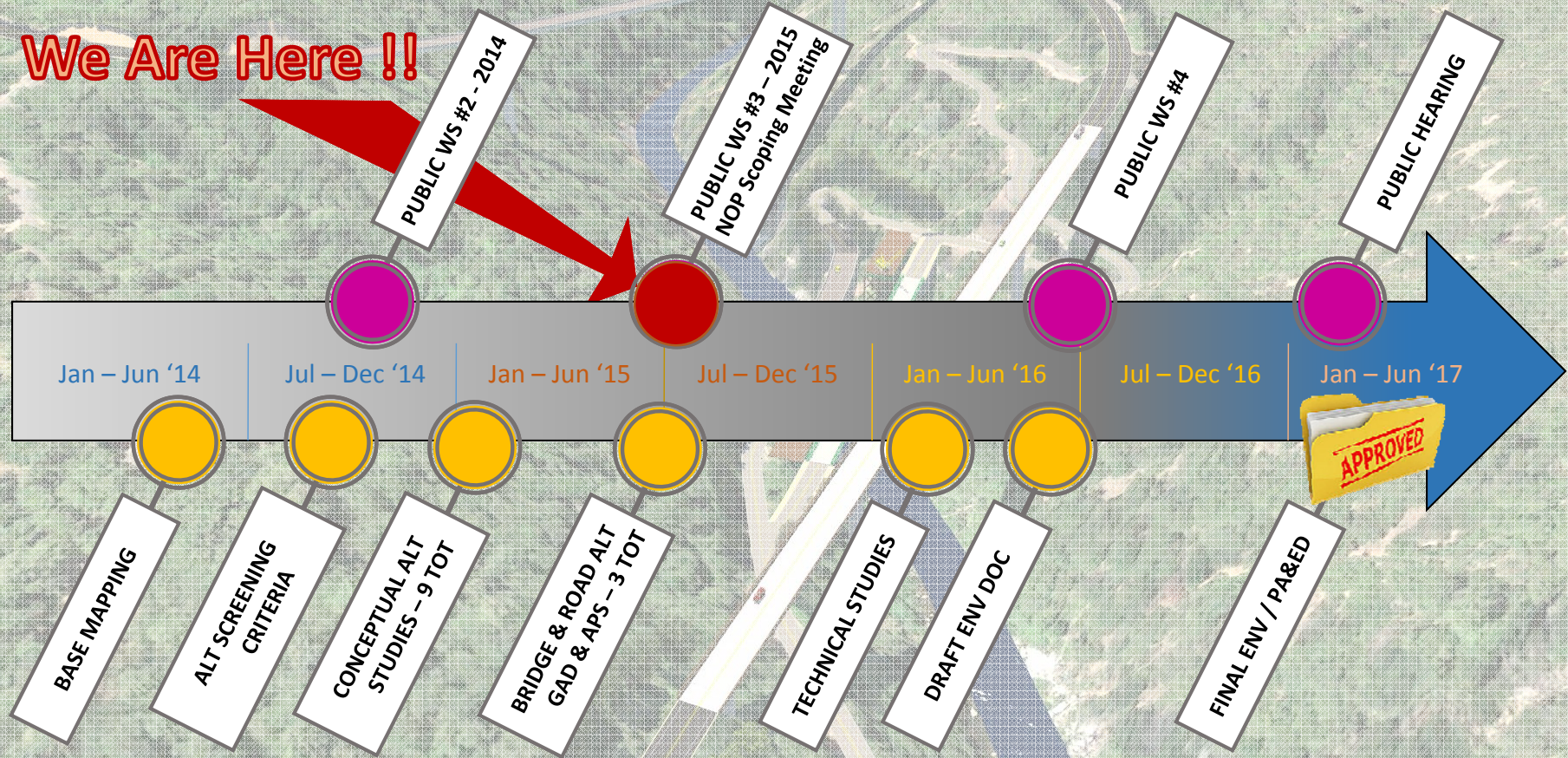


Begin Environmental Process – Technical Studies

- Public Outreach
- PA & ED

PA&ED Schedule

We Are Here !!



Mosquito Road Bridge – Alternatives for Final Study



AGENDA

→ **Welcome / Introductions** Matt Smeltzer, Co.

WHERE WE'VE BEEN Howard Michael, Quincy

→ **Recap Work to Last Workshop**

→ **Alt. Development Since Last Workshop**

→ **Begin Environmental Process**

WHERE WE ARE Janet Postlewait, County

→ **Overview of Environmental Process**

WHERE WE'RE GOING Jon Balzer, County

→ **Next Steps**

→ **Open House Period**





Overview of Environmental Process

California Environmental Quality Act (CEQA)

- Enacted in 1970, after the National Environmental Policy Act (NEPA) in 1969



Purpose of CEQA is to:

- Disclose and inform public and decision makers of environmental impacts
- Find ways to avoid and prevent environmental impacts
- Provide reasons to the public for approval of projects that damage the environment
- Encourage interagency cooperation





Overview of Environmental Process

EIR PROCESS in General

- NOP Scoping (30 days for public input)
- Consider scoping comments
- Conduct resource impact evaluations on all alternatives
- Prepare Draft EIR

Issues to be considered –aesthetics, air quality;
hydrology/water quality; biological resources; cultural
resources; tribal cultural resources; traffic and circulation;
noise; geology/soils; land use; public services; utilities

- 45-day public review period of Draft EIR
- Prepare Final EIR
- Board certifies Final EIR and approves Project





Overview of Environmental Process

NOP Comments – What to Do

- ➔ Fill out a Comment Card Tonight or
- ➔ Submit Comments to the County by July 27, 2015
- ➔ Visit the project website:
<http://www.edcgov.us/MosquitoBridge/>
- ➔ Email: janet.postlewait@edcgov.us
- ➔ Mail: El Dorado County Transportation Div.
Attn: Janet Postlewait
2850 Fairlane Court
Placerville, CA 95667
Phone: (530) 621-5900

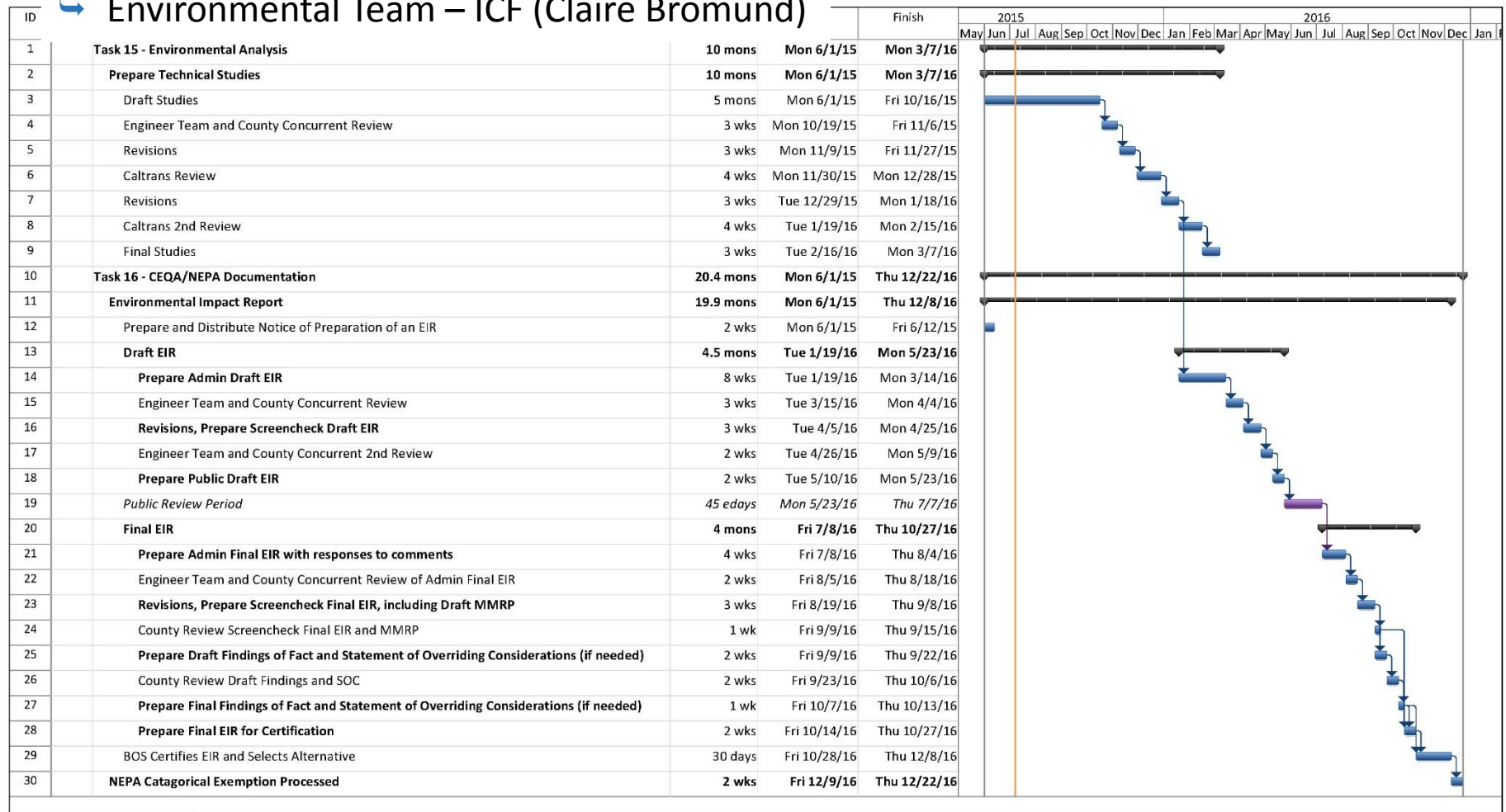




Overview of Environmental Process

→ EIR Process – Public Input / Involvement

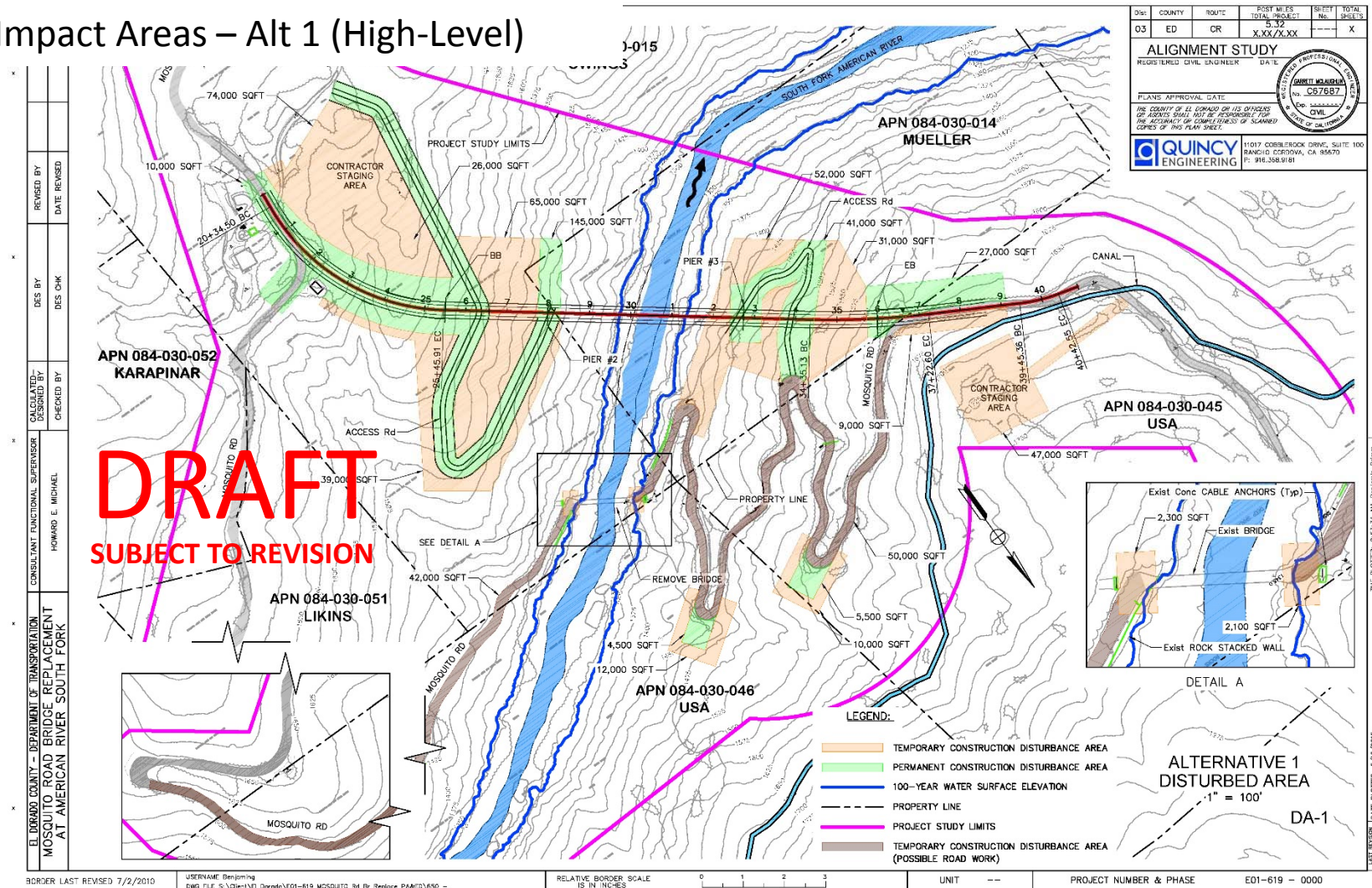
→ Environmental Team – ICF (Claire Bromund)





Overview of Environmental Process

Impact Areas – Alt 1 (High-Level)

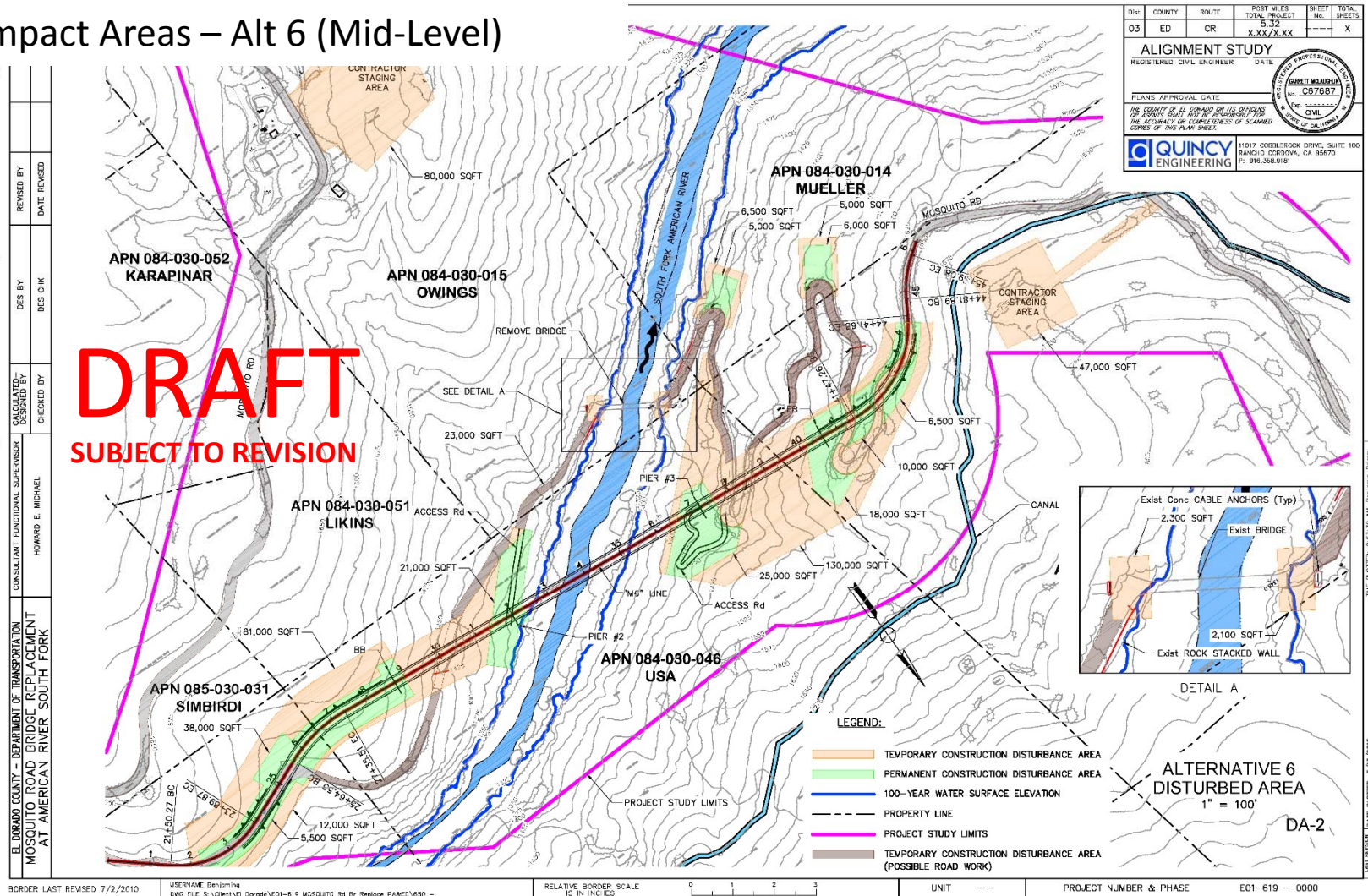


BORDER LAST REVISED 7/2/2010 USERNAME: Designing D:\G:\File S:\Client\N\ Dorado\E01-619 MOSQUITO Rd Br Replace PMAE\650 - RELATIVE BORDER SCALE IS IN INCHES 0 1 2 3 UNIT -- PROJECT NUMBER & PHASE E01-619 - 0000



Overview of Environmental Process

➔ Impact Areas – Alt 6 (Mid-Level)

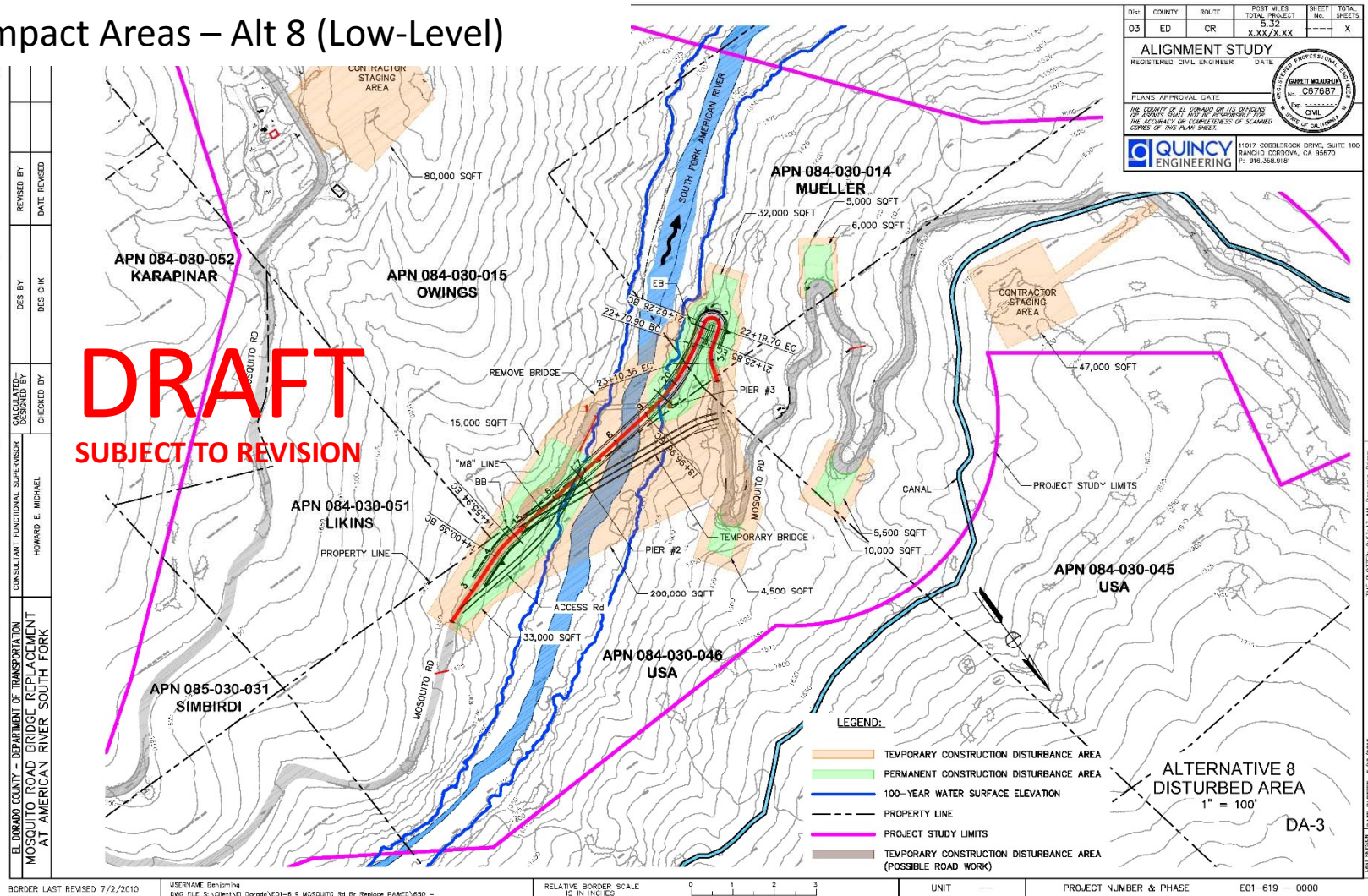


Mosquito Road Bridge – Alternatives for Final Study



Overview of Environmental Process

➔ Impact Areas – Alt 8 (Low-Level)



Mosquito Road Bridge – Alternatives for Final Study



AGENDA

→ **Welcome / Introductions** Matt Smeltzer, Co.

WHERE WE'VE BEEN Howard Michael, Quincy

→ **Recap Work to Last Workshop**

→ **Alt. Development Since Last Workshop**

→ **Begin Environmental Process**

WHERE WE ARE Janet Postlewait, County

→ **Overview of Environmental Process**

WHERE WE'RE GOING Jon Balzer, County

→ **Next Steps**

→ **Open House Period**

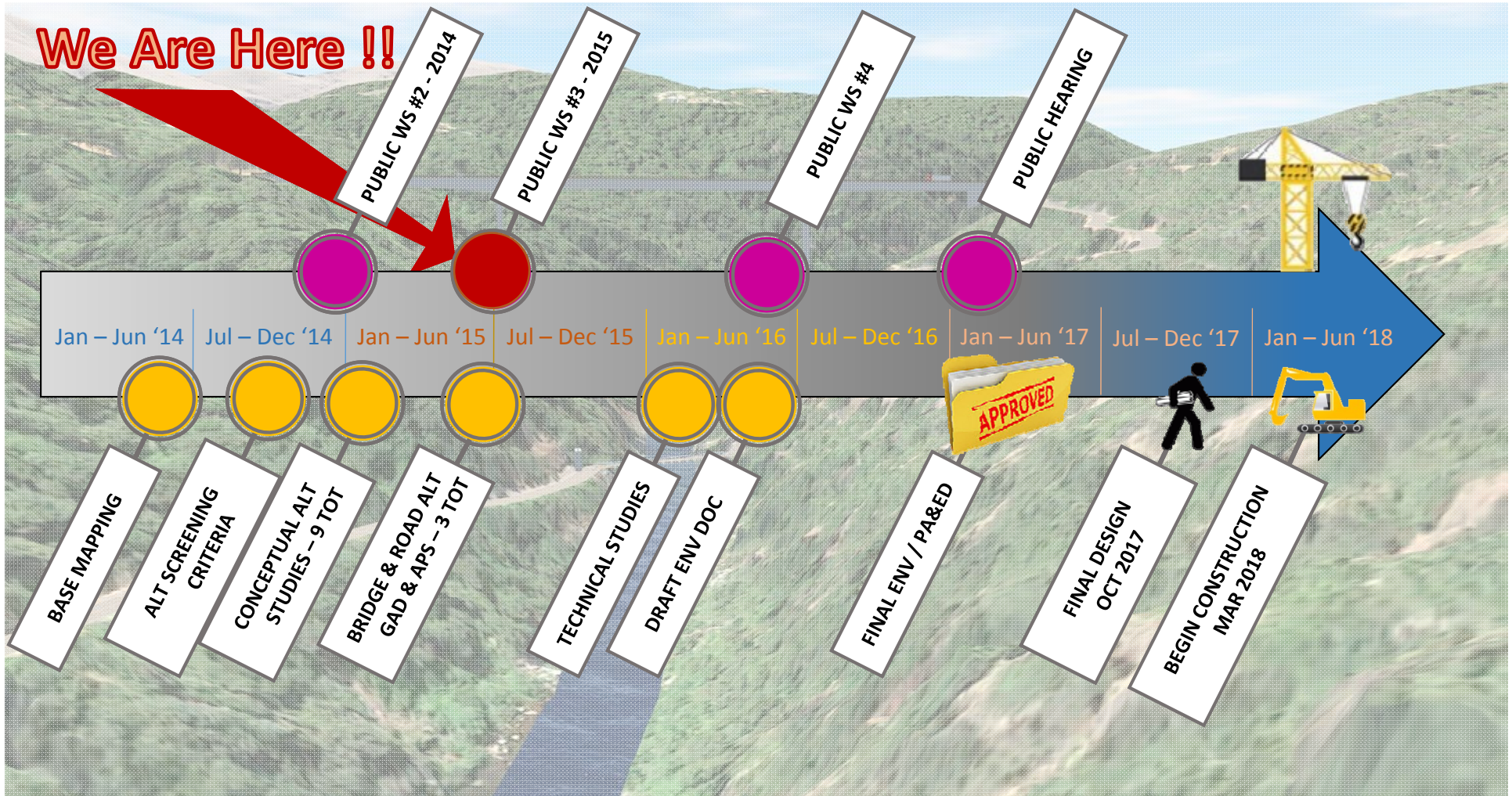




Begin Environmental Process – Technical Studies

- Public Outreach
- PA & ED

PA&ED Schedule





Questions & Answers





Open House

