

---

# **Statewide Park Program Grant Opportunities**

## **Public Workshop**

### **February 25, 2021**

---



**El Dorado County  
Department of Transportation**

# Workshop Goals

---

- Inform the public of the upcoming application submittals
- Solicit feedback and comments from public
- Provide updates of project schedules and status

# Statewide Park Program

---

- Formally known as “Statewide Park Development and Community Revitalization Program”
- Funded as part of 2018 California Proposition 68 Parks & Water Bond program
- Program’s intent is to **create new parks** and **new recreation opportunities** in critically underserved communities across California
- \$395.3 million in competitive grant funds available in upcoming Round 4 (applications due March 12)



California Department of  
Parks and Recreation  
Office of Grants and  
Local Services

# Proposed DOT Project Submittals

---

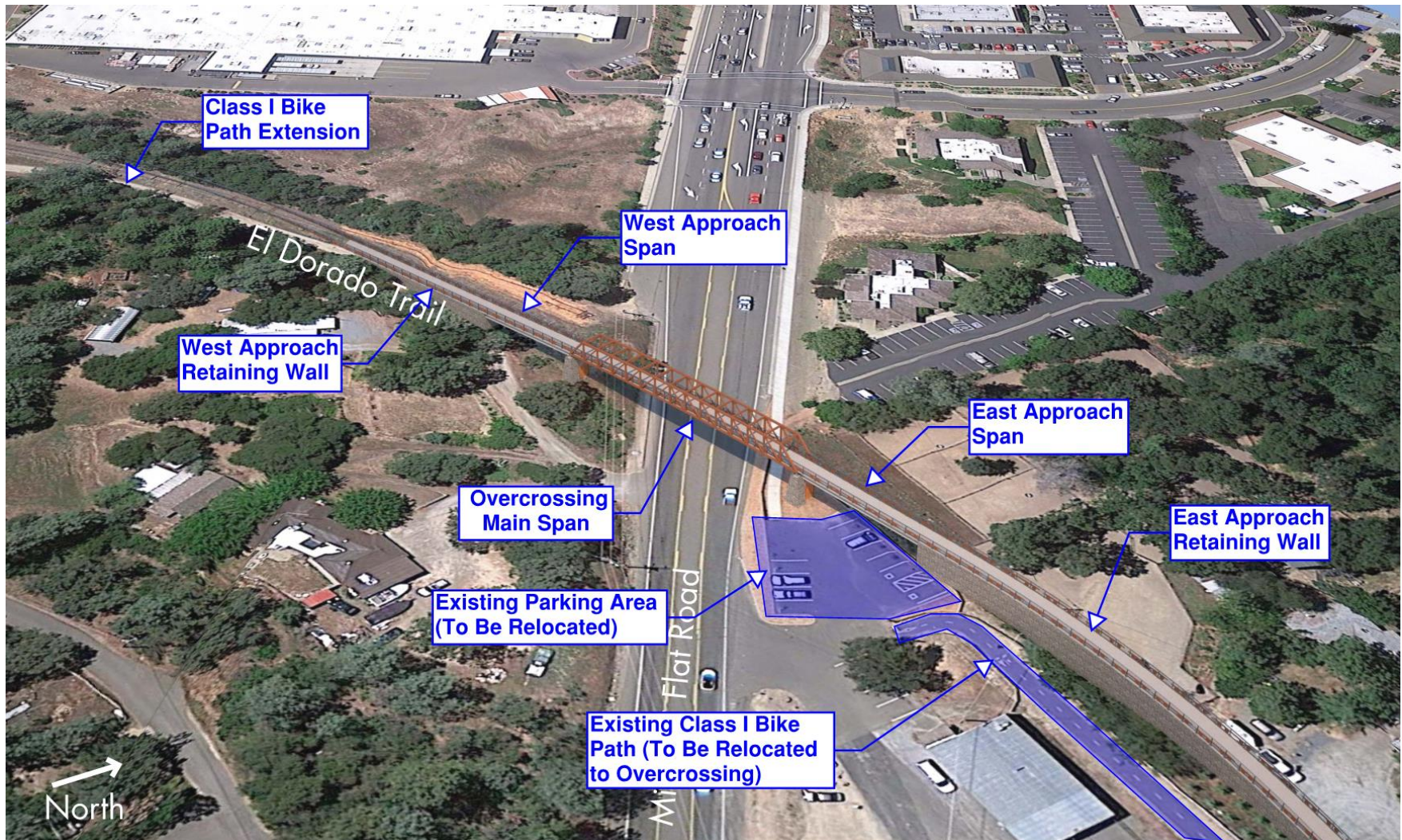
- The Department of Transportation (DOT) anticipates submitting 3 applications in Round 4:
  - El Dorado Trail / Missouri Flat Road Bike/Pedestrian Overcrossing
  - El Dorado Trail Extension - Halcon Road to Pondorado Road
  - Old Depot Park Playground & Multigenerational Exercise Circuit and Parking Lot

# El Dorado Trail Bike/Pedestrian Overcrossing

---

- Received Congestion Mitigation and Air Quality Program (CMAQ) funding in 2014 for environmental and design
- Connects existing Class 1 trail segments on each side of Missouri Flat Road with a grade-separated crossing
- Total project length = 1,030 feet (0.2 miles)
- Consists of 180-foot center span (variable arch truss), 86-foot & 102-foot approach spans (concrete girders), and 662 feet of retaining walls

# El Dorado Trail Bike/Pedestrian Overcrossing



# El Dorado Trail Bike/Pedestrian Overcrossing

---

- Initial Public Workshop – July 2016
- Community provided input regarding structure type, colors, lighting, and accessibility
- Features implemented into design
- 12-foot wide bridge/structure path
- Weathering steel main span for rust-colored appearance
- Horizontal steel railings consistent with adjacent trail segments and local character
- Concrete piers will feature textured “stacked rock” finish
- Low-level path lighting will be included for safety
- Accessible from proposed sidewalk, both sides of Missouri Flat Road

# El Dorado Trail Bike/Pedestrian Overcrossing

---





# El Dorado Trail Bike/Pedestrian Overcrossing

---



Low-Profile Path Lighting Example

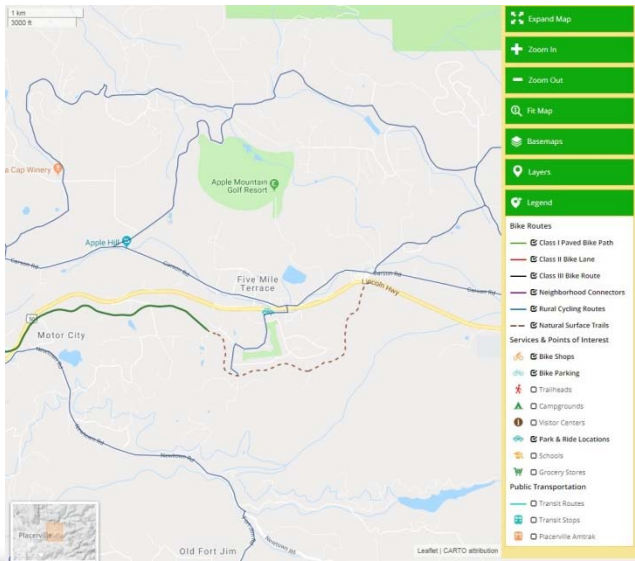


# El Dorado Trail Bike/Pedestrian Overcrossing

---

- Estimated construction cost = \$5.2 million
- Construction completion dependent on available funding
- Construction possible in 2022 if grant awarded
- County will continue to pursue other funding sources

# El Dorado Trail Extension - Halcon to Ponderado



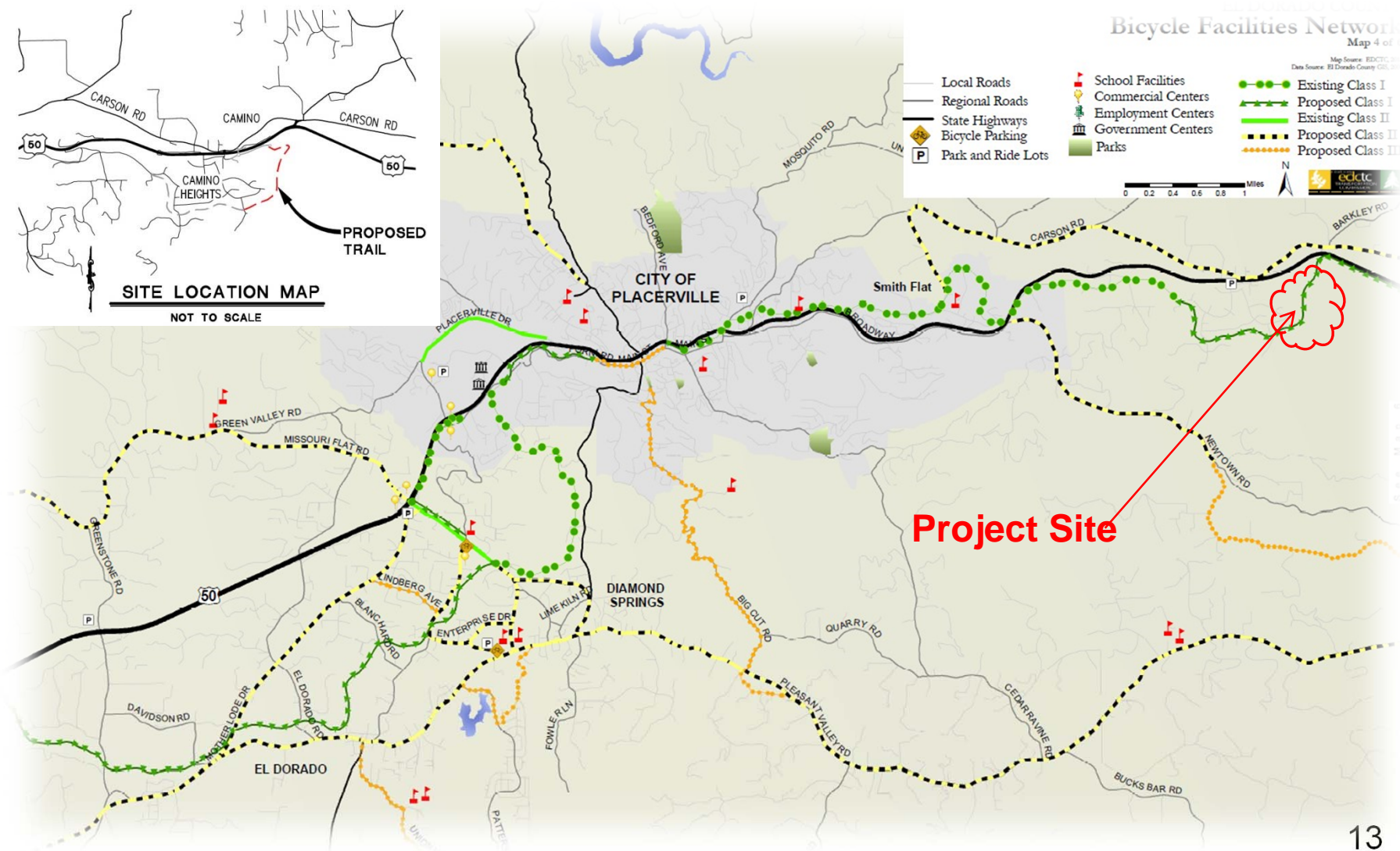
# El Dorado Trail Extension - Halcon to Ponderado

---

## PROJECT OVERVIEW:

- Extends Class 1 Trail from Halcon Road (in Camino) to Ponderado Road (Caltran's Safety Project)
- Provide Trail access across Hwy 50 (through Caltrans Safety Project)
- Improve fire and property access along upper (north) area of trail

# El Dorado Trail Extension - Halcon to Pondorado



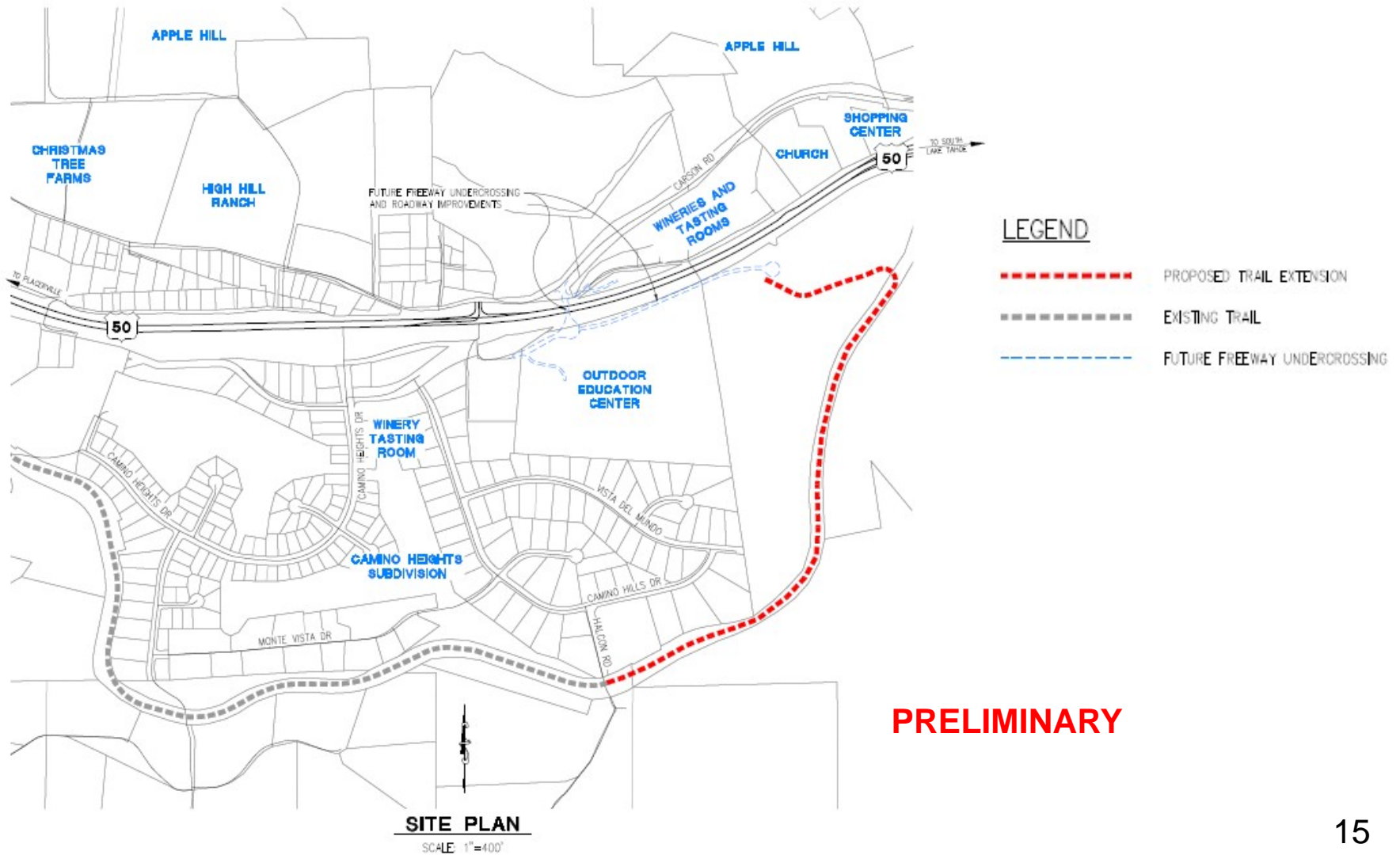
# El Dorado Trail Extension - Halcon to Ponderado

---

## PROJECT HIGHLIGHTS:

- Over approx. 4,000 LF of Class 1 Trail
- Potential for additional Trail Parking Area
- Improved Trail Connectivity

# El Dorado Trail Extension - Halcon to Ponderado



# El Dorado Trail Extension - Halcon to Ponderado

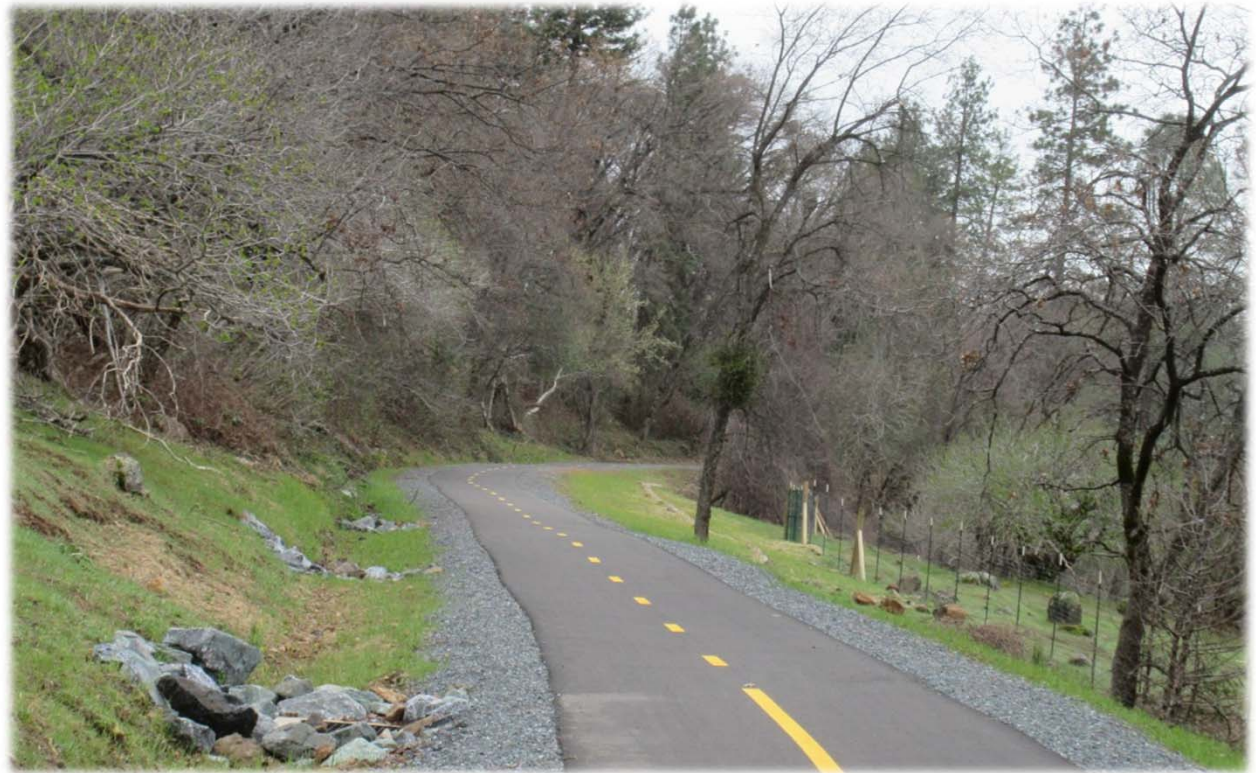
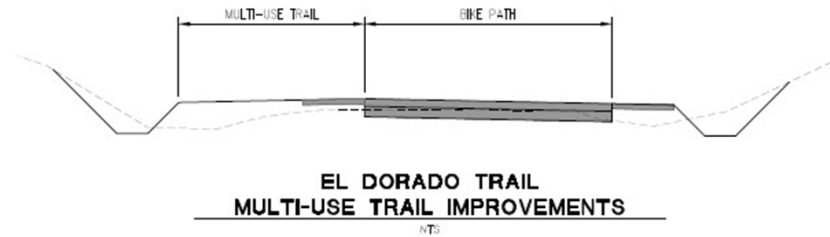
---

## PROJECT HIGHLIGHTS:

- Over 4,000 LF of Class 1 Trail
- Constructed mostly along Railroad Corridor
- Drainage Improvements
- Potential for additional Trail Parking Area
- Improved Trail Connectivity
- Improved fire and neighboring access



# El Dorado Trail Extension - Halcon to Ponderado



**PRELIMINARY**

# El Dorado Trail Extension - Halcon to Ponderado

---

## PROJECT LOOK AHEAD:

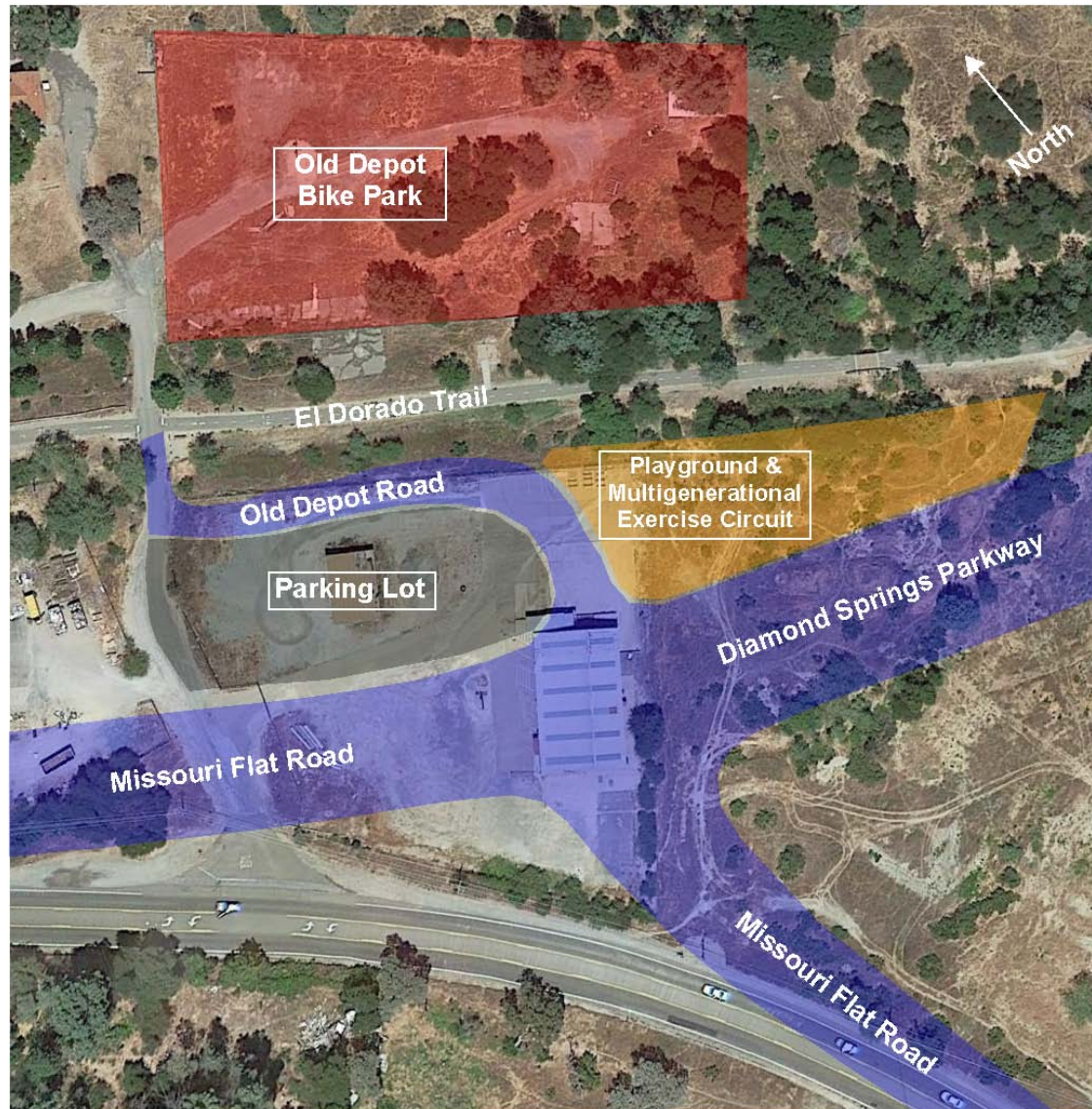
- Awarded CMAQ Grant (partial funding PE, ROW)
- Currently in environmental and design
- Construction may be as early as 2023 pending grant funding
- County also evaluating and pursuing other funding sources

# Old Depot Park Improvements

---

- Proposed project at existing “Red Hay Barn” site at Missouri Flat Road & Old Depot Road
- Parking lot for El Dorado Trail & Old Depot Park use, will replace existing small lot when Overcrossing is built
- Parking lot will include at least 43 spaces and additional room for trailer parking
- Proposed playground and multigenerational exercise circuit will complement recreational facilities at adjacent Old Depot Bike Park
- Lighting is included

# Old Depot Park Improvements



# Old Depot Park Improvements

---

## Multigenerational Fitness Park

- Gaining in popularity over the past decade
- Provides a wide array of outdoor exercise equipment specifically designed to be used by late teens and adults
- Ergonomic fitness equipment for accessibility by different ages and skill capabilities
- Exercise equipment resembles playground equipment - gives you the feel you're playing, not working out
- Allows adults to exercise with their children or grandchildren



Strength



Flexibility



Cardio



Accessible

# Old Depot Park Improvements

## Multigenerational Fitness Park Examples



# Old Depot Park Improvements

## Multigenerational Fitness Park Examples



# Old Depot Park Improvements

---

## Children's Playground

- Will feature play equipment with a natural theme and earth colors
- Play equipment designed for children 5-12 years old





# Old Depot Park Improvements

## Children's Playground Examples



# Submitting Questions & Comments

---

- **Raise Hand on Zoom**
- **Email:** [EDCtrail@edcgov.us](mailto:EDCtrail@edcgov.us)