
El Dorado Trail Extension & Bike/Pedestrian Overcrossing Projects

Public Informational Meeting

July 21, 2016

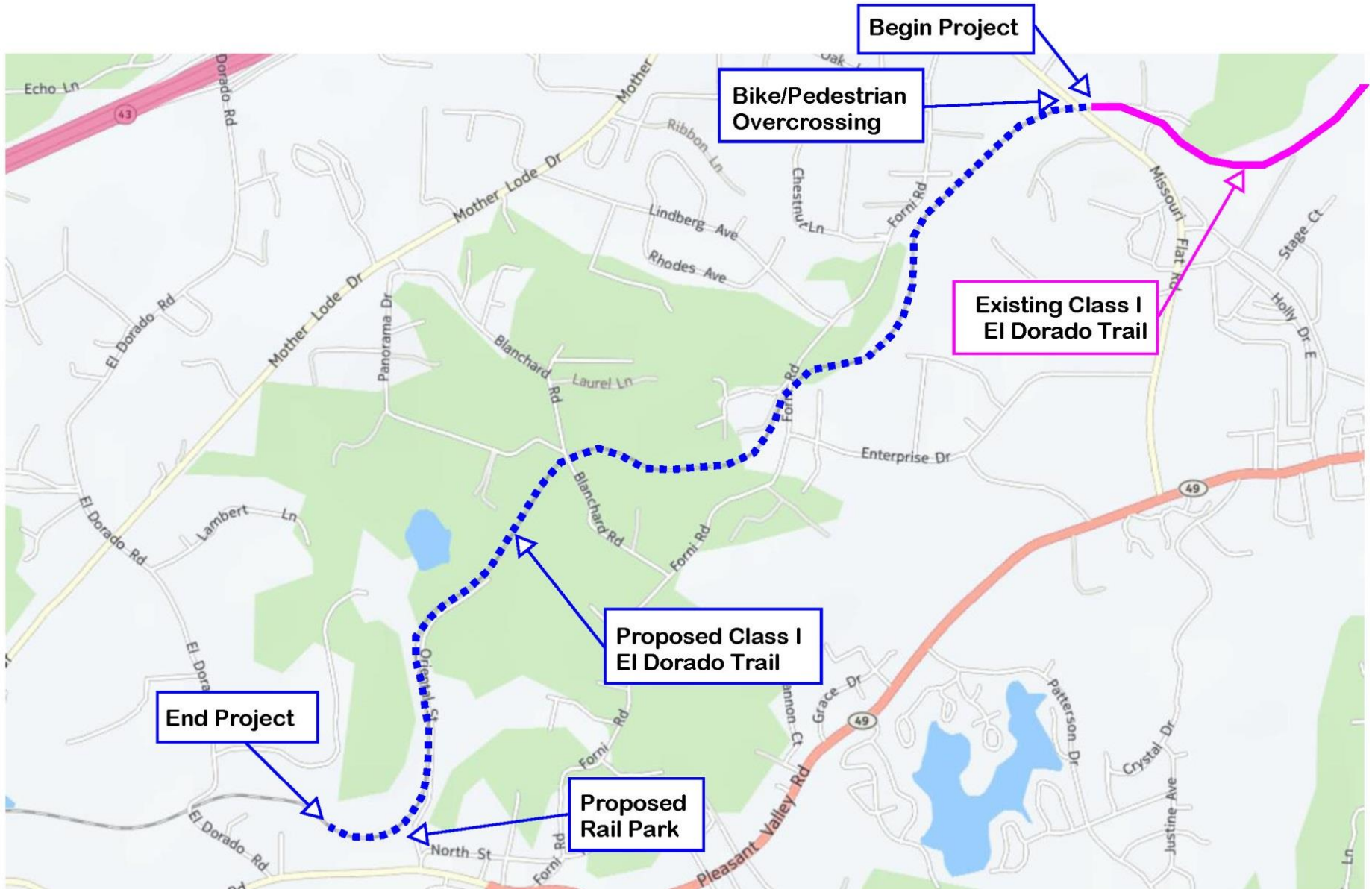


**El Dorado County
Community Development Agency
Transportation Division**

Project Information

- **Extend the existing Class I bike path from Missouri Flat Road to the community of El Dorado**
- **8-foot paved path with 2-foot unpaved shoulders**
- **Construct an overcrossing at Missouri Flat Road to accommodate trail users**
- **A new, larger parking area will be constructed at the future Missouri Flat Road/Diamond Springs Parkway intersection**
- **All improvements anticipated within existing Sacramento Placerville Transportation Corridor (SPTC) right of way**

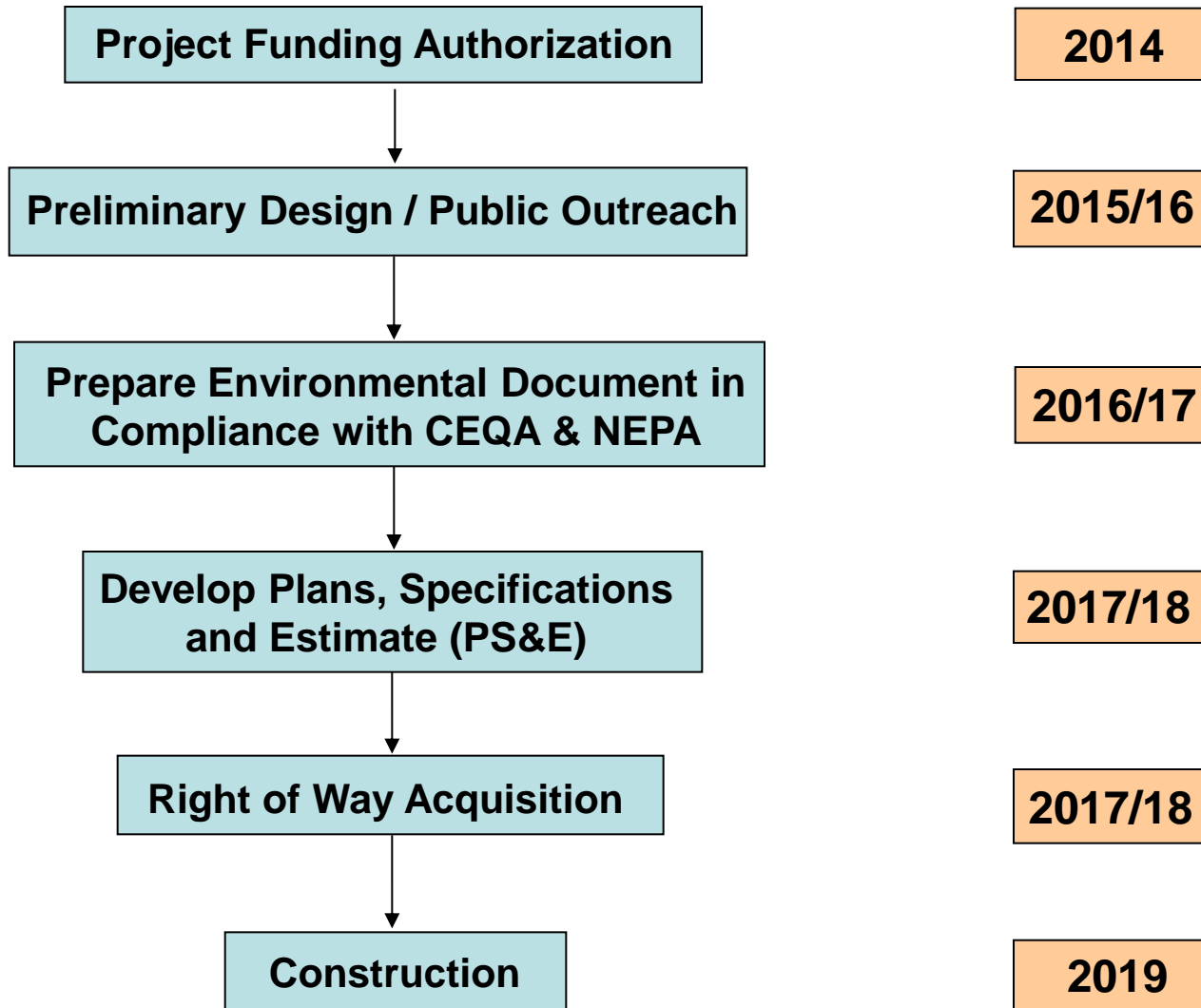
Project Location



Project Funding & Estimated Costs

- **Environmental & Design Phase funding obtained through Congestion Mitigation Air Quality (CMAQ) program federal grants**
- **Additional grant funding currently being pursued for Construction Phase**
- **Class I Trail Extension Project Total Cost = \$4.1 million**
- **Bike/Pedestrian Overcrossing Project Total Cost = \$6.4 million**

Project Schedule



Class I Bike Path Design Criteria

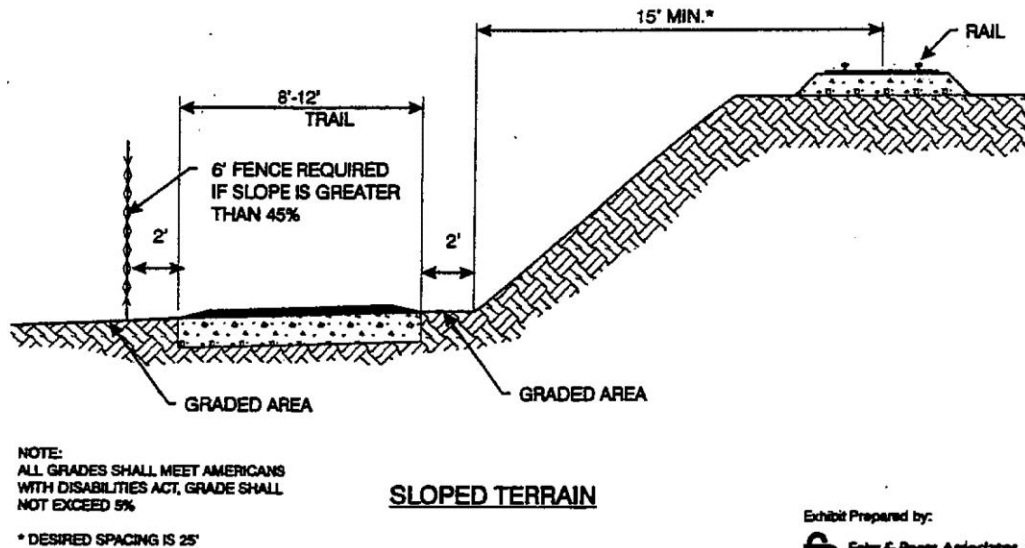
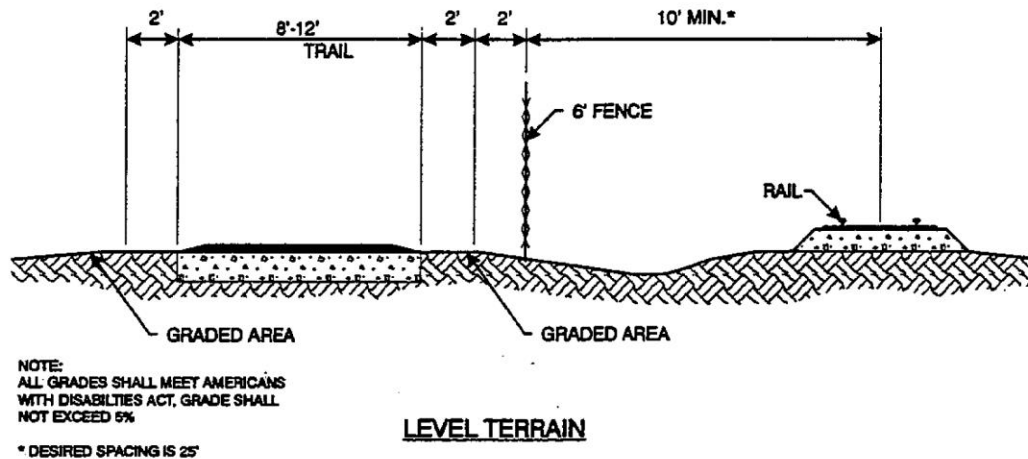


Exhibit Prepared by:

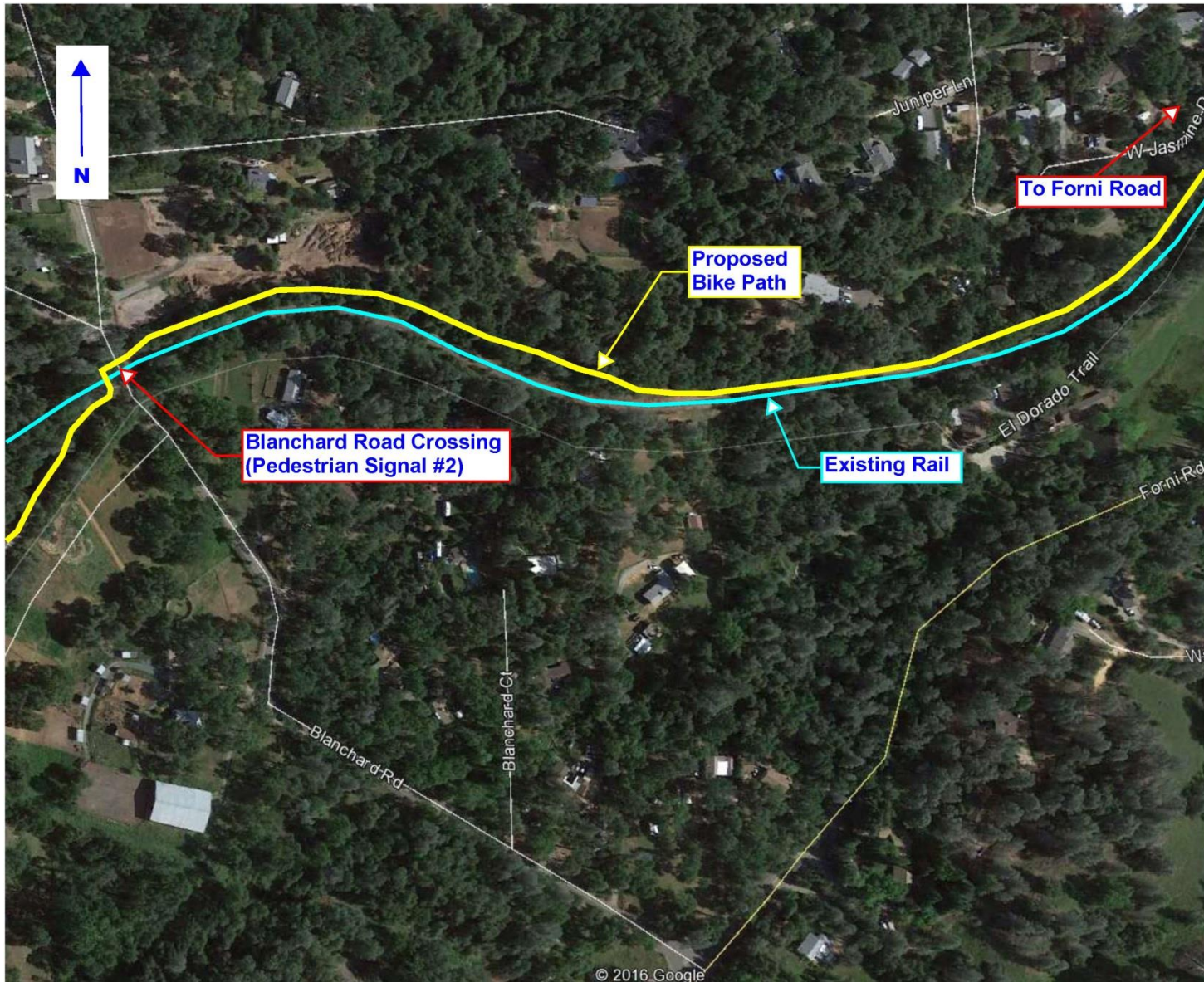
Trail Extension Project Plan



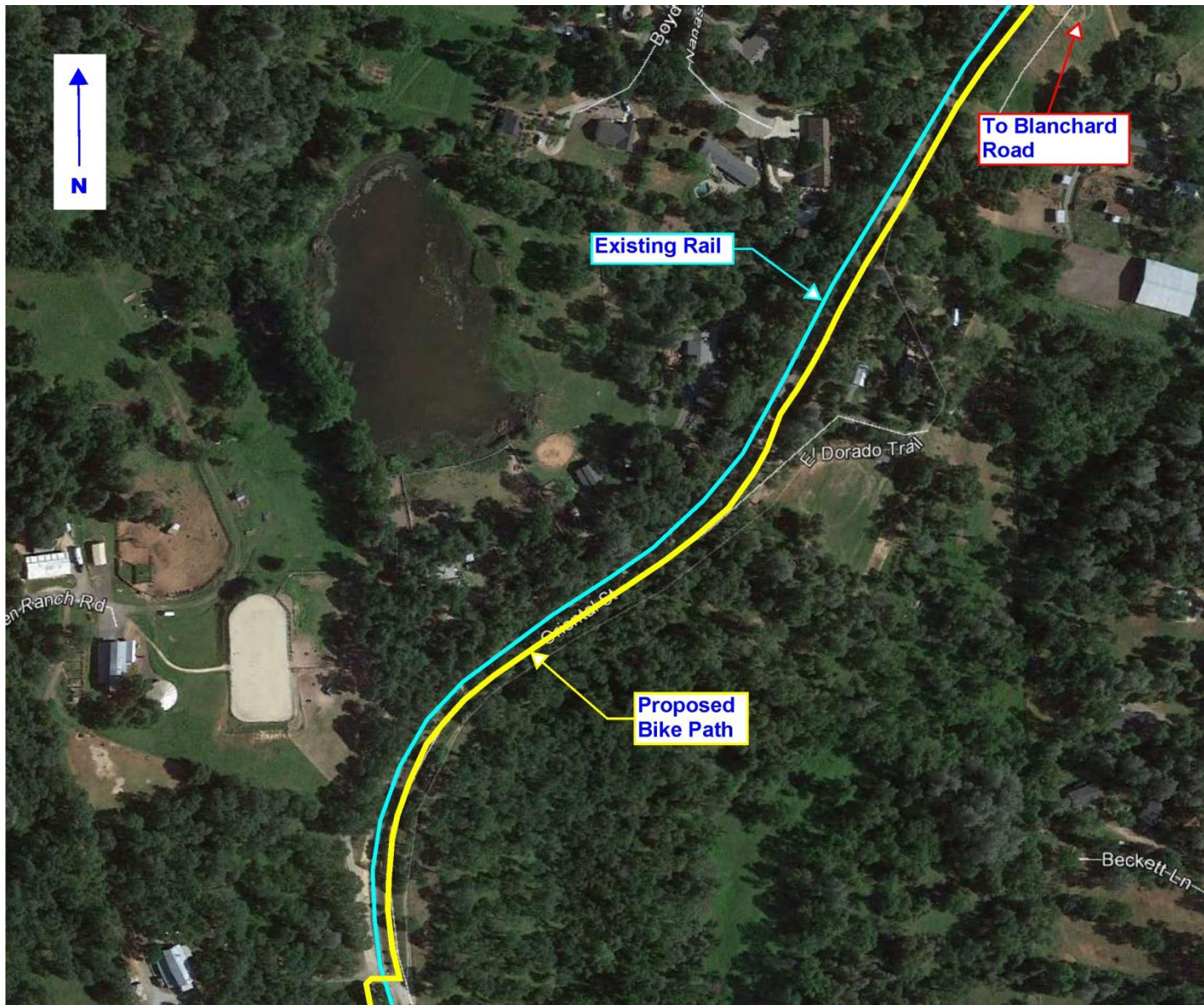
Trail Extension Project Plan



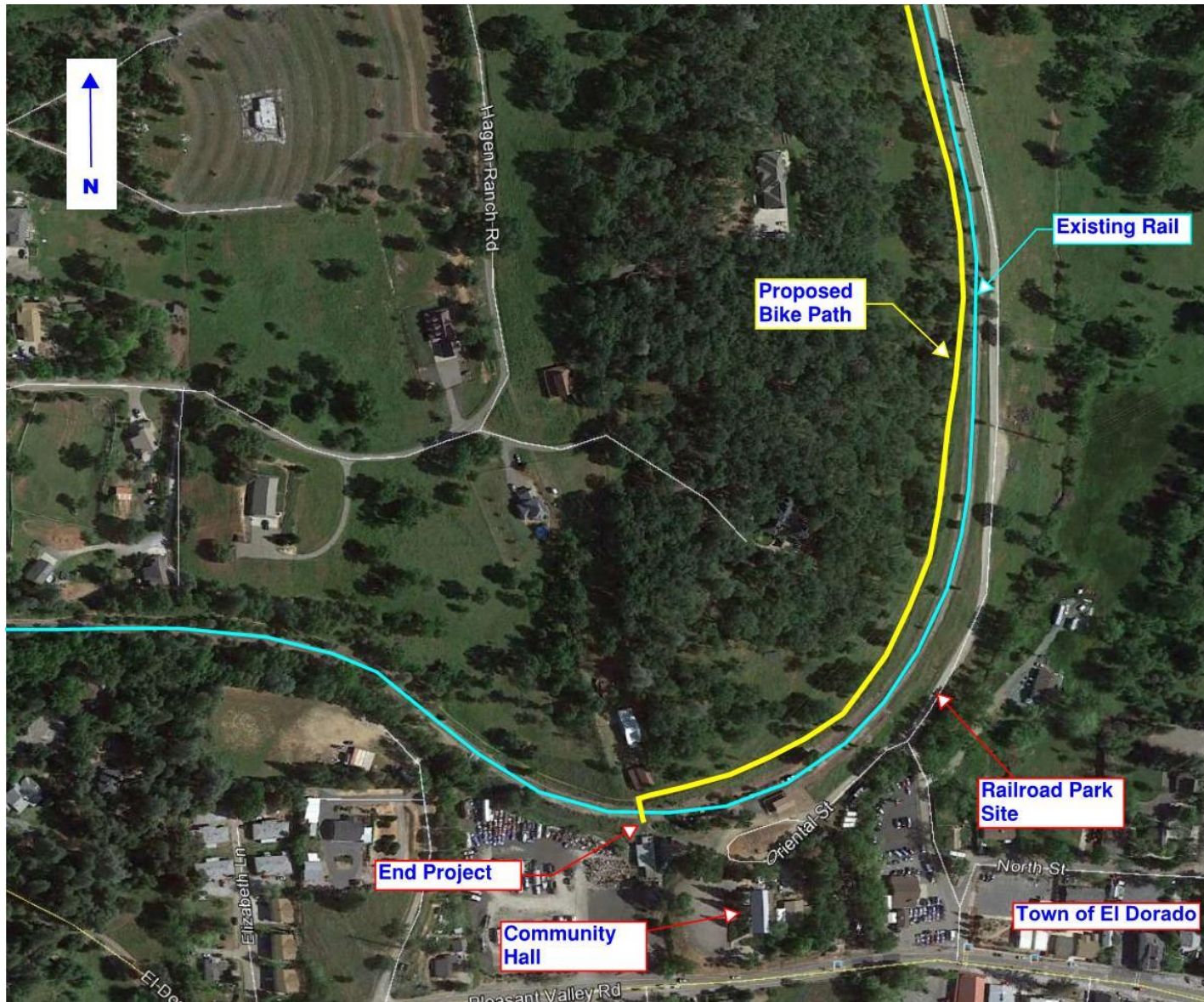
Trail Extension Project Plan



Trail Extension Project Plan



Trail Extension Project Plan



Roadway Crossing Safety Measures

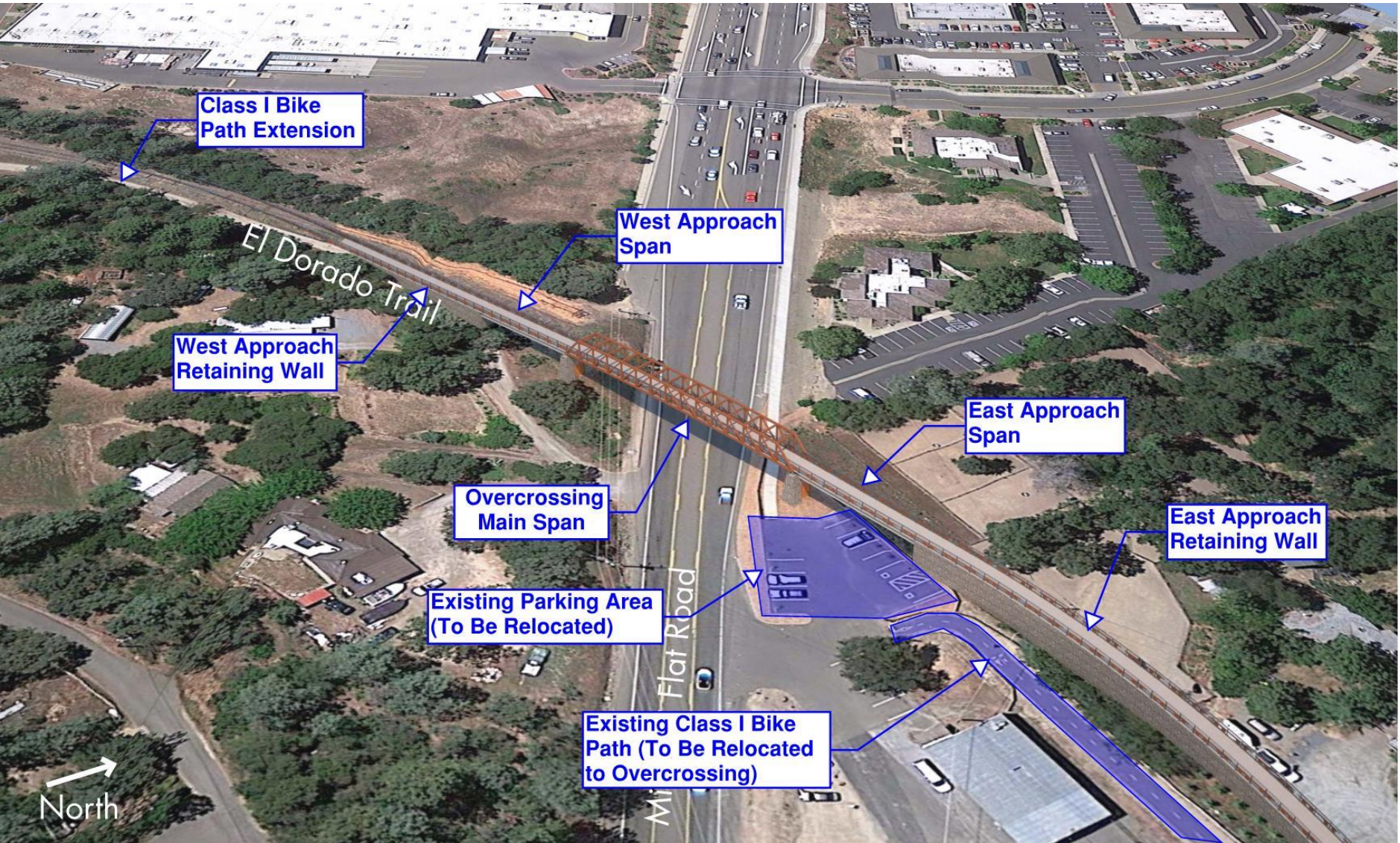


Solar-Powered Roadside Pedestrian Signal



Overhead "Hawk" Pedestrian Signal

Bike/Pedestrian Overcrossing Overview



Structure Types

Girder



Truss



Arch



Cost: \$

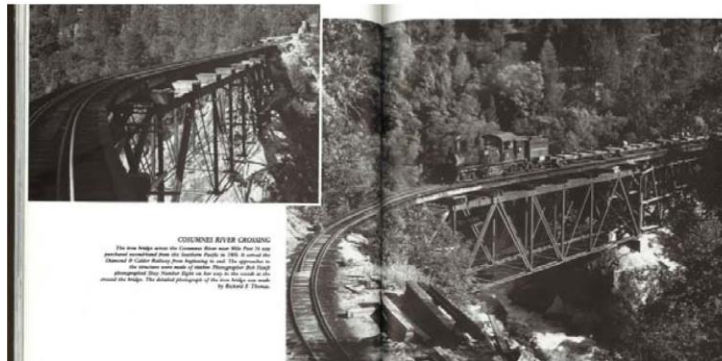
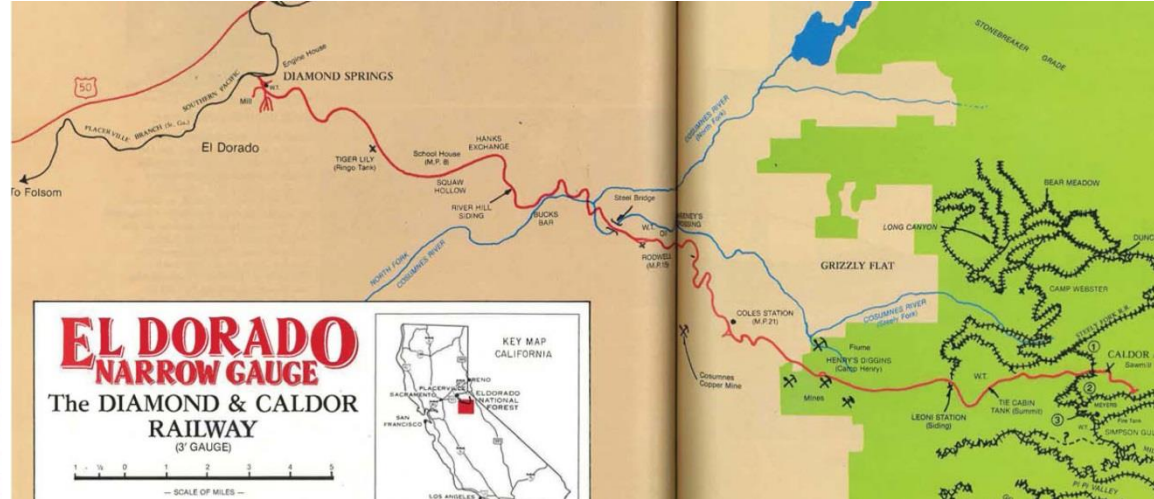
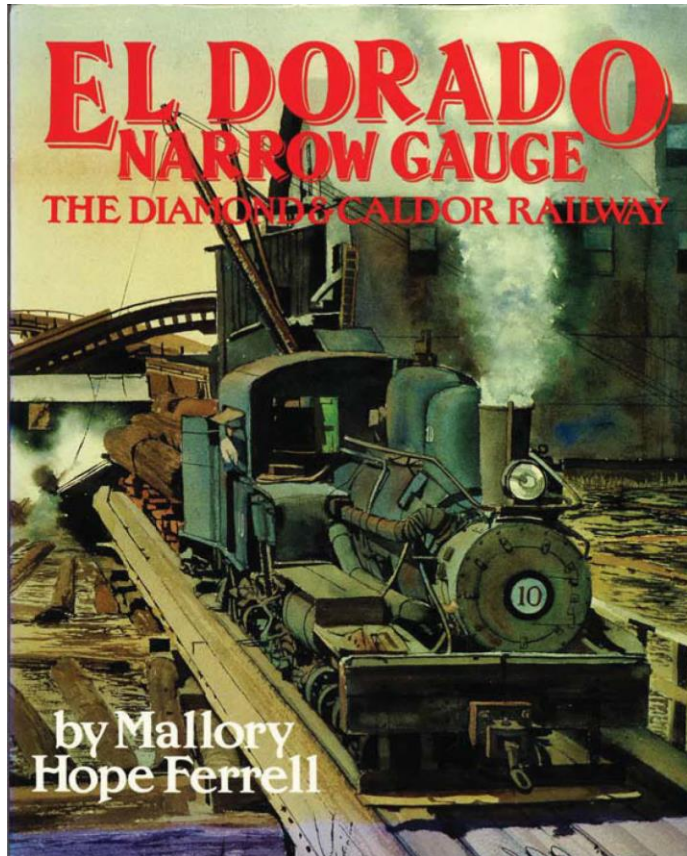


Cost: \$\$



Cost: \$\$\$

Truss Bridge – Reflecting Railroad History



Truss Bridge – Reflecting Railroad History



**Narrow Gauge Shay Locomotive
(Diamond & Caldor Railway, circa 1936)**

Truss Types

Truss 'A'



Truss 'B'



Truss 'A'



Truss 'A'



Truss 'B'



Truss 'B'



Wall Finish Treatments



Brick & "Fractured Fin" Concrete Pier



Brick Retaining Wall

Wall Finish Treatments



Stacked Rock & Concrete Pier



Stacked Rock Retaining Wall

Bridge Lighting Options



Low-Profile Path Lighting Example



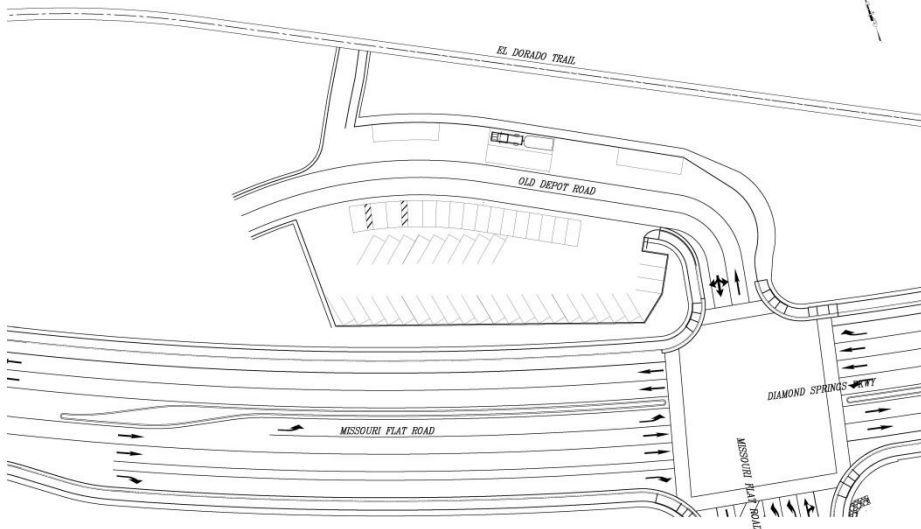
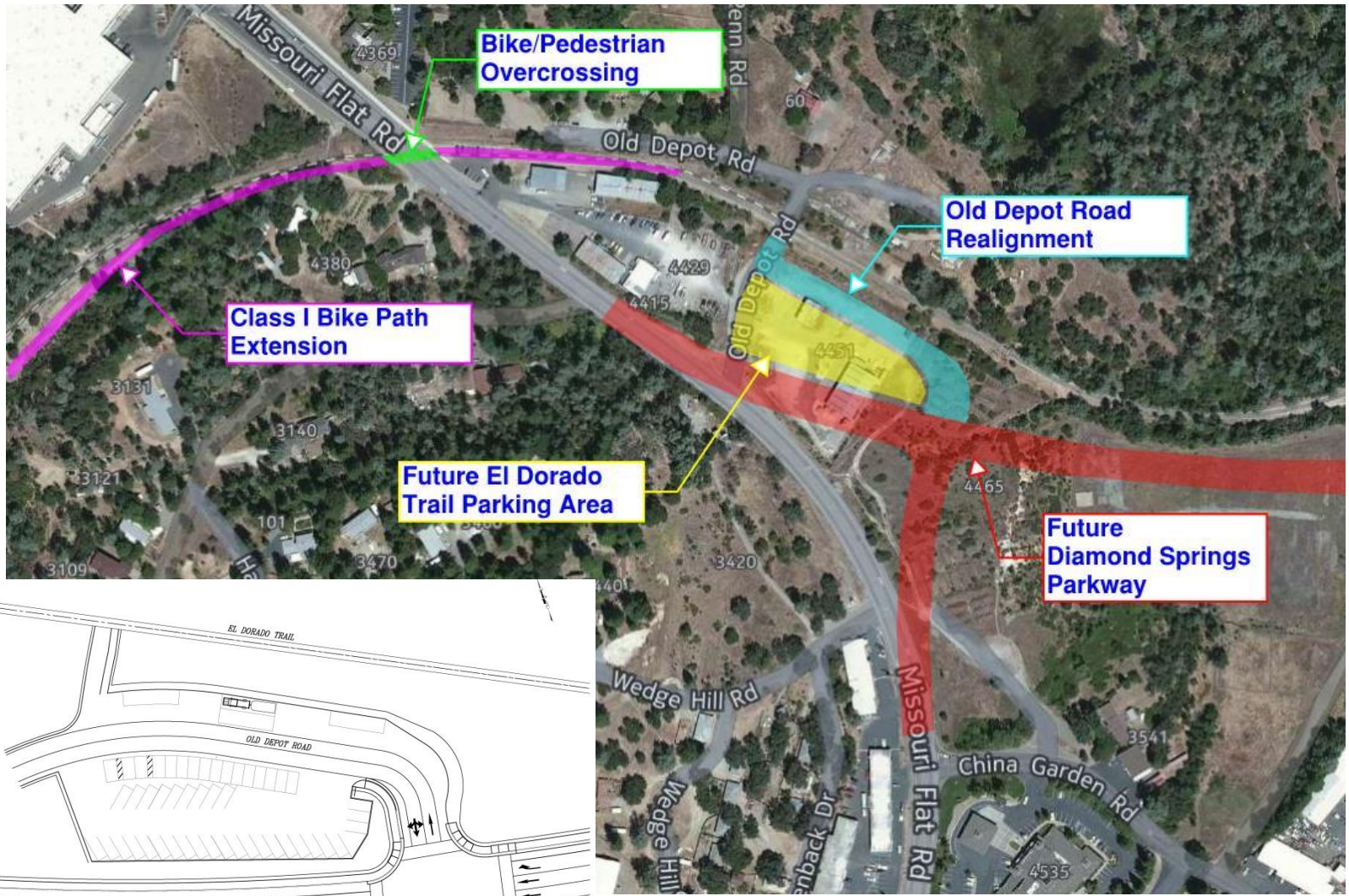
Bridge Lighting Options



Overhead Lighting Example



New Parking Area



Summary of Overcrossing Design Options

- **Structure Type: Girder, Truss, Arch, Other?**
- **Truss Type: 'A' vs. 'B'**
- **Wall Finish Treatments: Brick vs. Stacked Rock & "Fractured Fin" vs. Smooth Finish Concrete**
- **Bridge Lighting: Low Profile vs. Overhead**



Questions?

Thank you for attending!

**Comment cards are provided at
the door – we welcome your
input on design options!**

Contact:

CDA / Transportation Division

Email: EDCtrail@edcgov.us

Phone: (530) 621-5900