



**COUNTY OF EL DORADO  
DEPARTMENT OF TRANSPORTATION**

# New CMAQ Projects

Bicycle & Pedestrian Improvements

---

## **PROJECT OVERVIEWS**



*Public Meeting*

*July 31, 2019*



## AGENDA

→ Welcome / Introductions

## NEW CMAQ PROJECTS

→ Bicycle Plan Overview

→ Ponderosa Road

→ El Dorado Trail Extension

→ Pony Express Trail

## OPEN DISCUSSION

→ Open Discussion





## AGENDA

→ Welcome / Introductions

## NEW CMAQ PROJECTS

→ Bicycle Plan Overview

→ Ponderosa Road

→ El Dorado Trail Extension

→ Pony Express Trail

## OPEN DISCUSSION

→ Open Discussion





## AGENDA

→ Welcome / Introductions

## NEW CMAQ PROJECTS

→ Bicycle Plan Overview

→ Ponderosa Road

→ El Dorado Trail Extension

→ Pony Express Trail

## OPEN DISCUSSION

→ Open Discussion

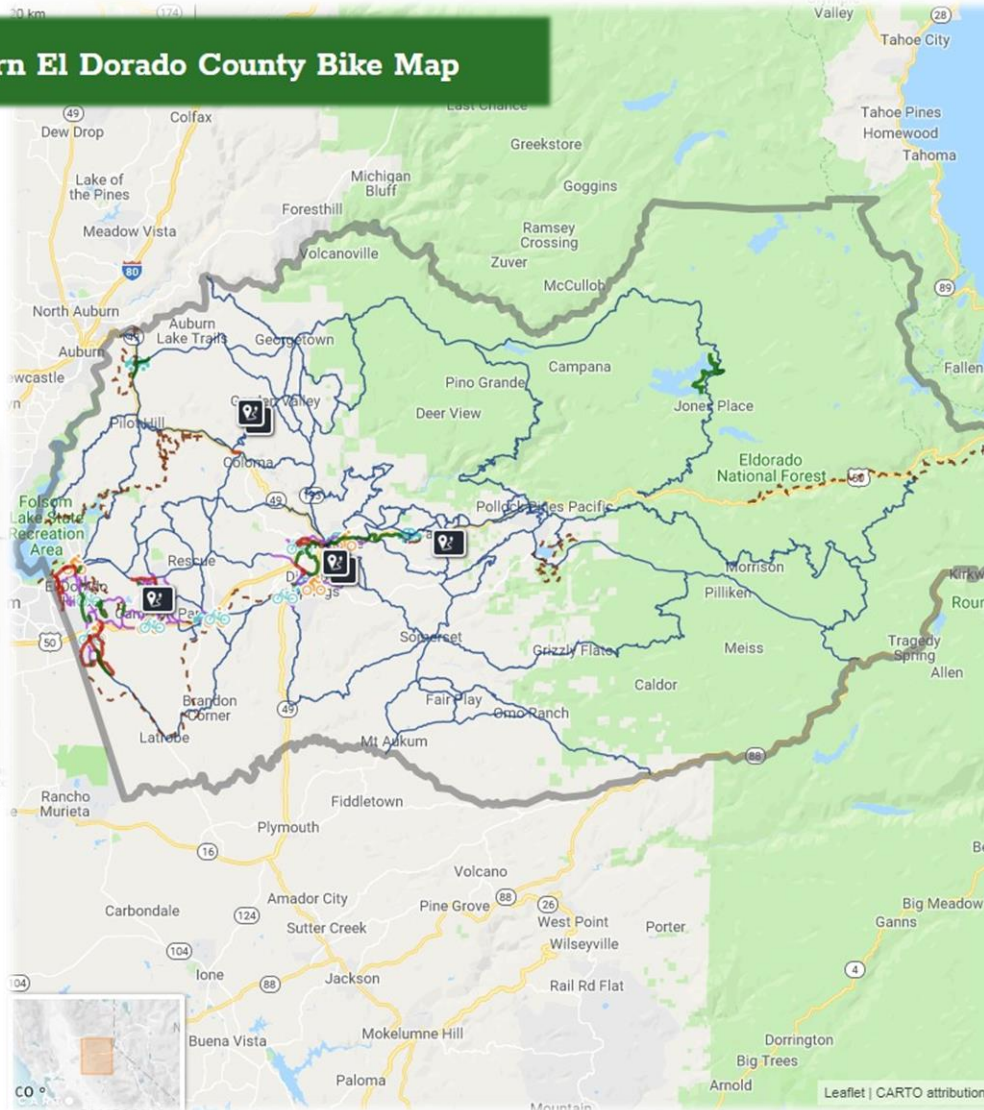




# El Dorado County Bicycle Transportation Plan Overview



## Western El Dorado County Bike Map



- Expand Map
- Zoom In
- Zoom Out
- Fit Map
- Basemaps
- Layers
- Legend

**Bike Routes**

- Class I Paved Bike Path
- Class II Bike Lane
- Class III Bike Route
- Neighborhood Connectors
- Rural Cycling Routes
- Natural Surface Trails

**Services & Points of Interest**

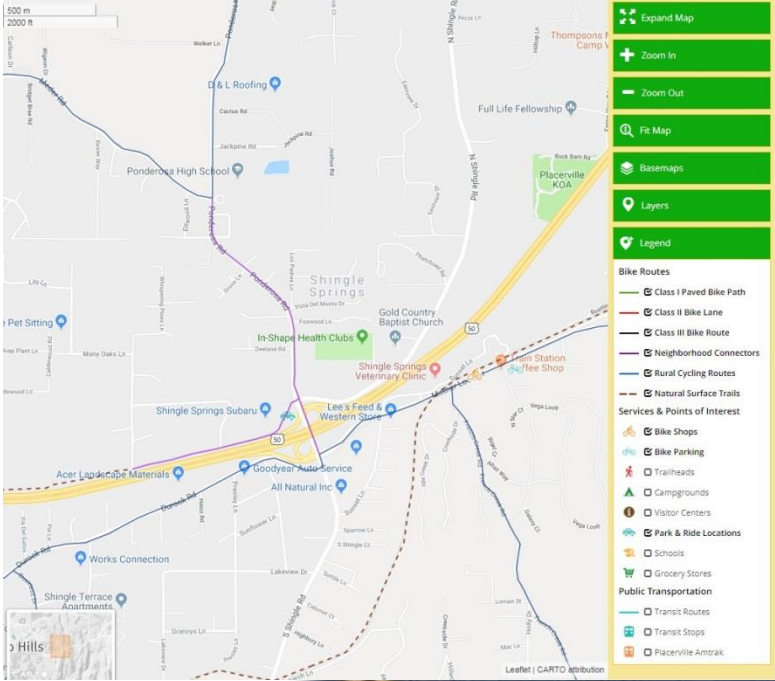
- Bike Shops
- Bike Parking
- Trailheads
- Campgrounds
- Visitor Centers
- Park & Ride Locations
- Schools
- Grocery Stores

**Public Transportation**

- Transit Routes
- Transit Stops
- Placerville Amtrak

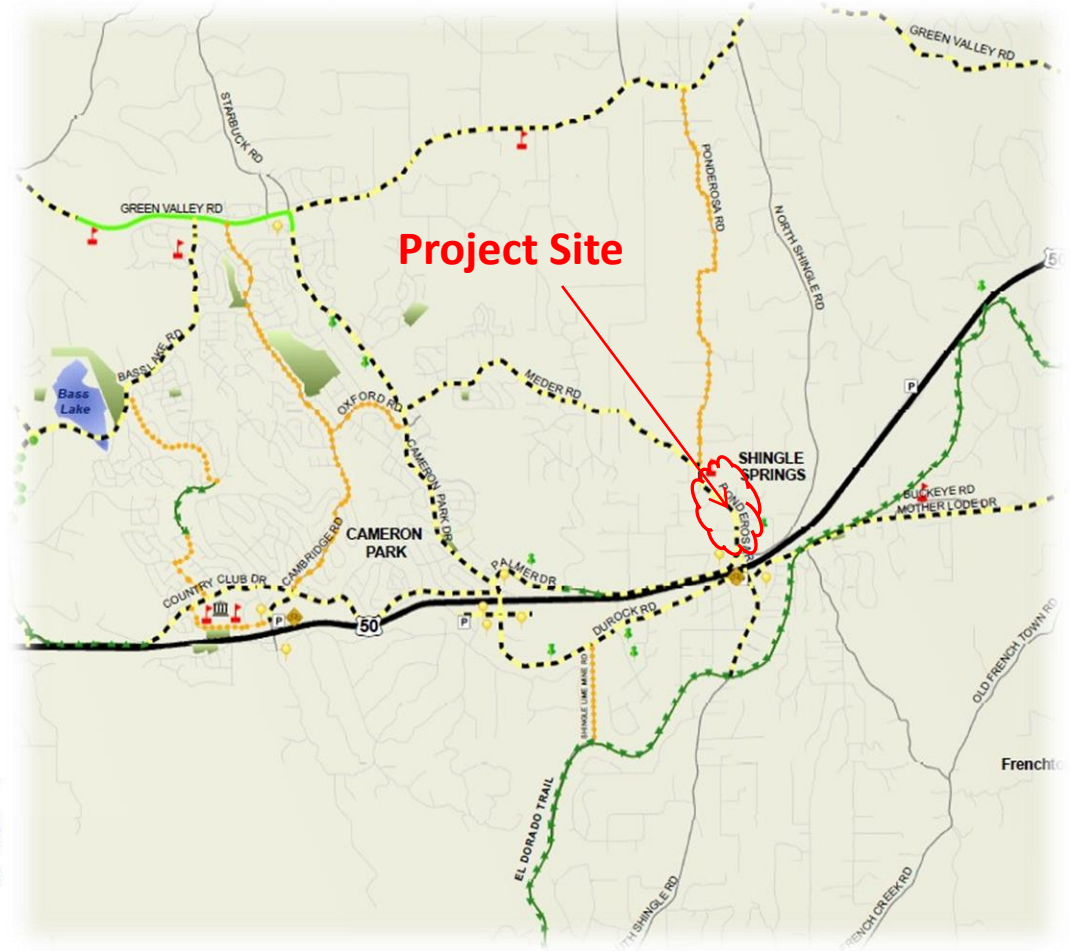


# Ponderosa Road Bicycle & Pedestrian Improvements





# Ponderosa Road Bicycle & Pedestrian Improvements



## EL DORADO COUNTY Bicycle Facilities Network Map 5 of 6

Map Source: EDCTC, 2010  
Data Source: El Dorado County GIS, 2009

- |                    |                    |                    |
|--------------------|--------------------|--------------------|
| School Facilities  | Local Roads        | Existing Class I   |
| Commercial Centers | Regional Roads     | Proposed Class I   |
| Parks              | State Highways     | Existing Class II  |
|                    | Bicycle Parking    | Proposed Class II  |
|                    | Park and Ride Lots | Proposed Class III |



# Ponderosa Road Bicycle & Pedestrian Improvements



## LEGEND

- PROPOSED CLASS II BIKE LANE
- FUTURE CLASS II BIKE LANE (AS PART OF INTERCHANGE)
- PROPOSED SIDEWALK
- FUTURE SIDEWALK (AS PART OF INTERCHANGE PROJECT)
- FUTURE SIDEWALK (AS PART OF HIGH SCHOOL PROJECT)
- EXISTING SIDEWALK
- PROPOSED CROSSWALK
- EXISTING CROSSWALK

**PRELIMINARY**

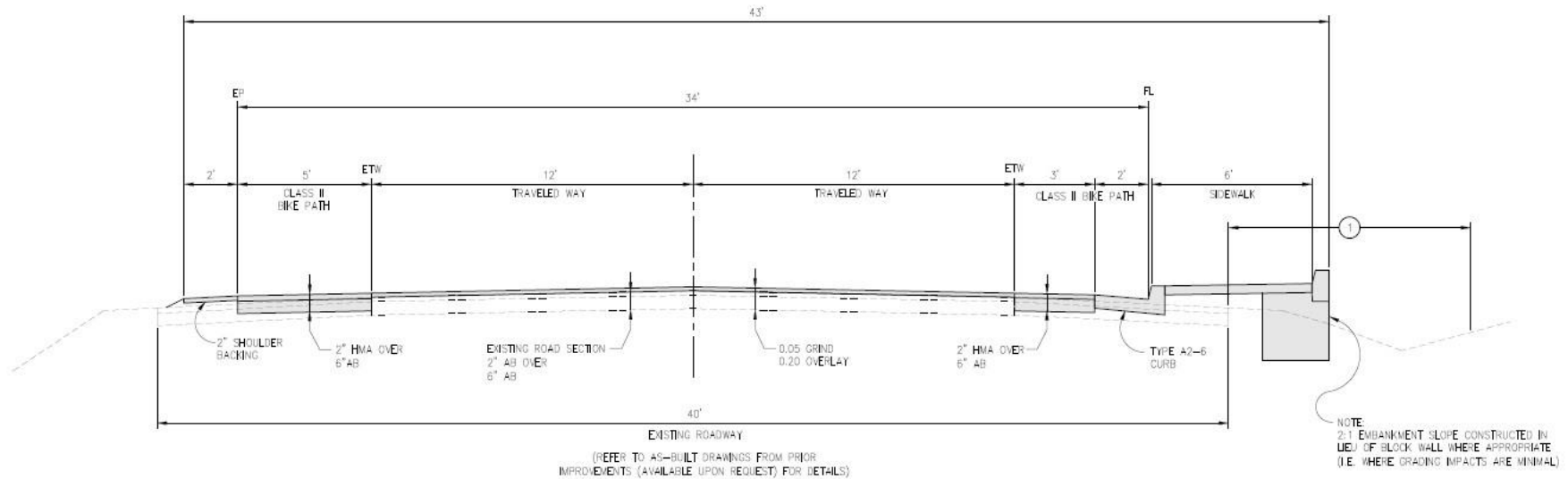




# Ponderosa Road Bicycle & Pedestrian Improvements

## Project Overview:

- ✓ Approx. 1,900 LF of Sidewalk
- ✓ Approx. 3,800 LF of Class II Bike Lanes
- ✓ Connects Ponderosa High School to Foxwood (integrates with Future Interchange)
- ✓ Multiple ADA ramps, Drainage Improvements



**PRELIMINARY**

**NOTES:**

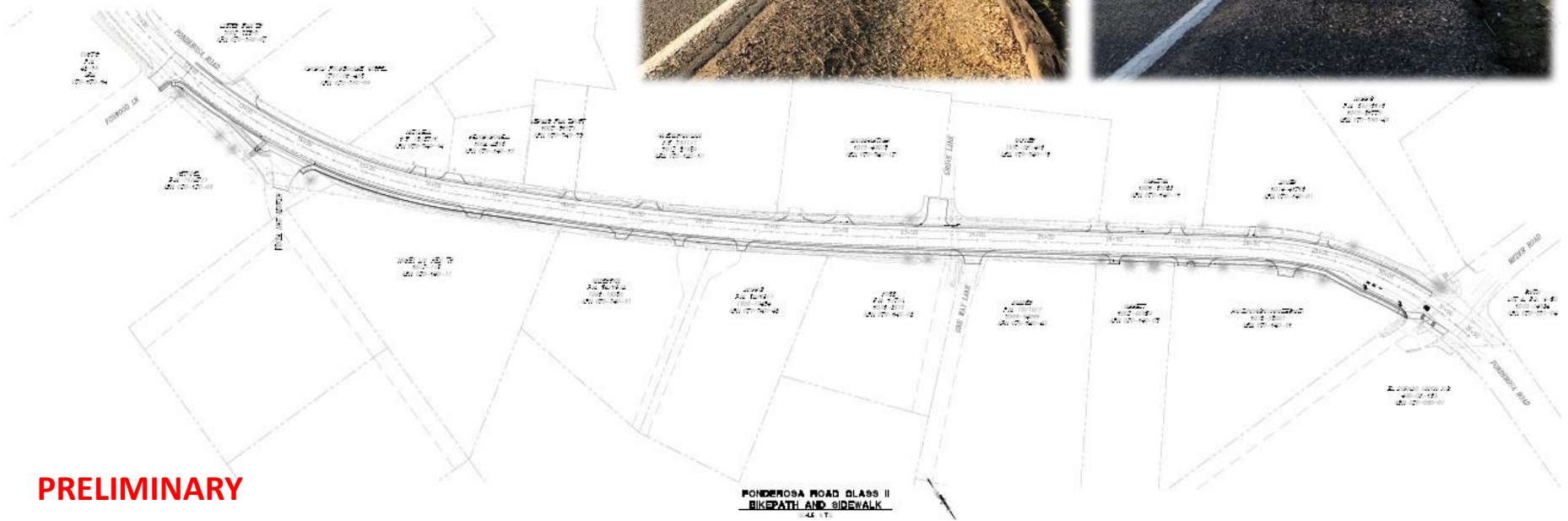
- ① — EXISTING COUNTY MAINTAINED ROADWAY SHOULDER AND ROADSIDE DITCH



## Ponderosa Road Bicycle & Pedestrian Improvements

### Project Overview:

- ✓ Minimize Right of Way Impacts

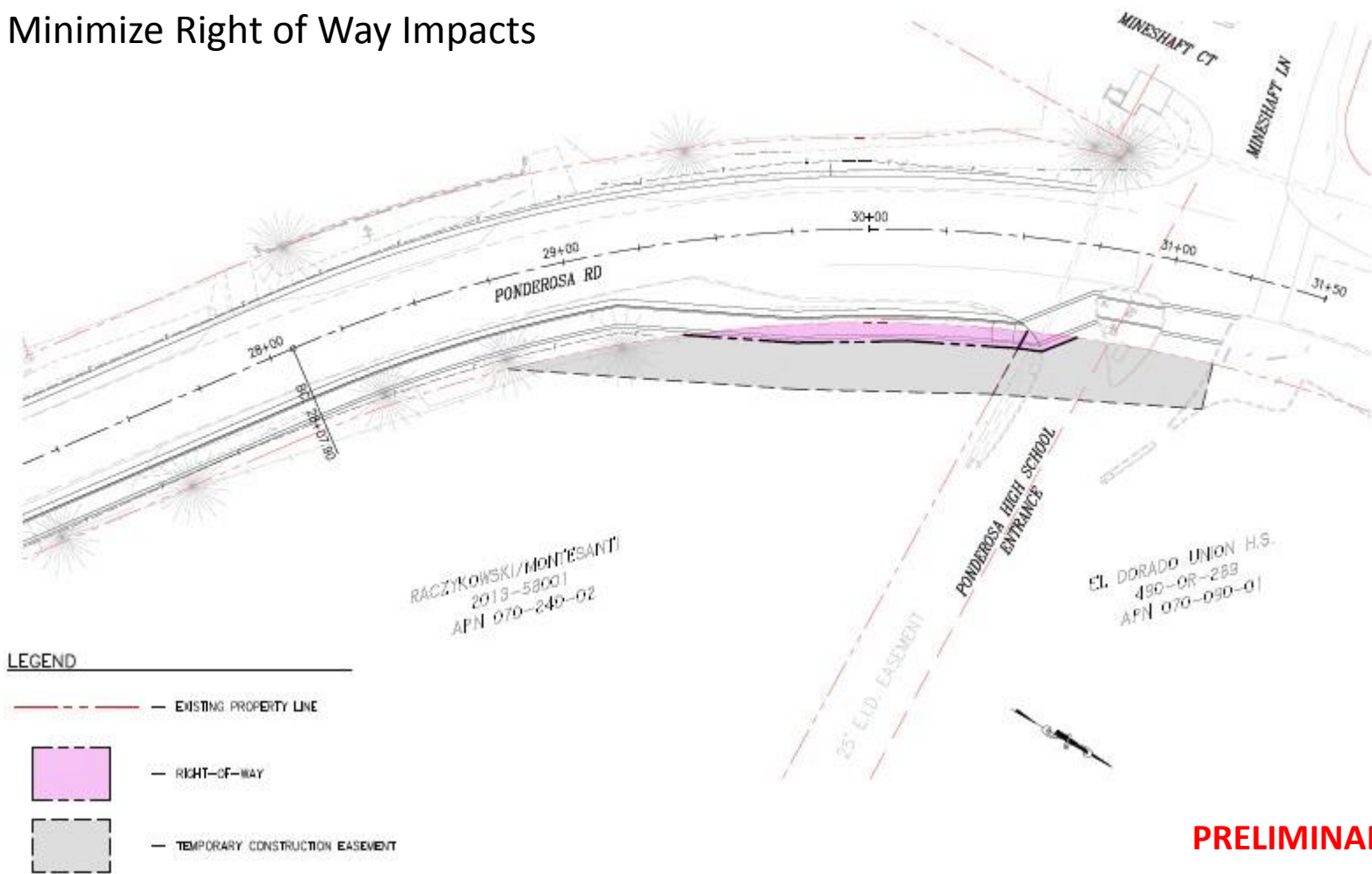




# Ponderosa Road Bicycle & Pedestrian Improvements

## Project Overview:

- ✓ Minimize Right of Way Impacts

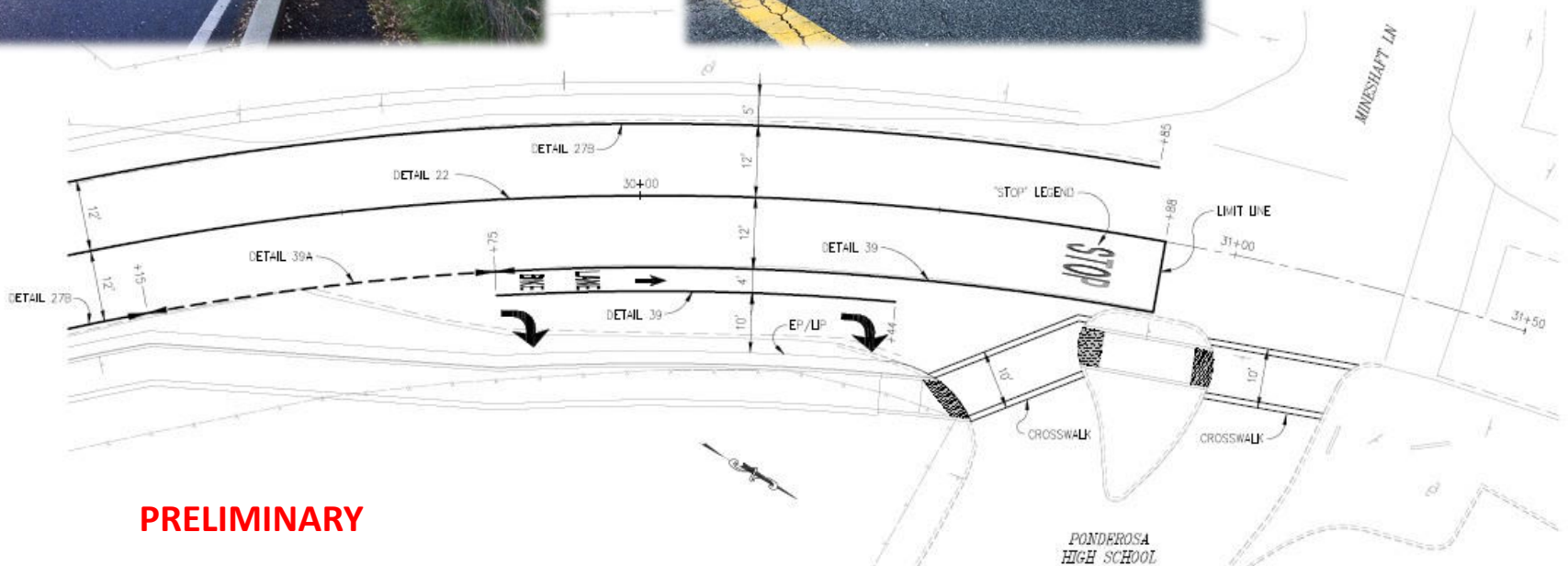


**PRELIMINARY**



# Ponderosa Road Bicycle & Pedestrian Improvements

## Mineshaft Ln at Ponderosa Road Intersection



**PRELIMINARY**



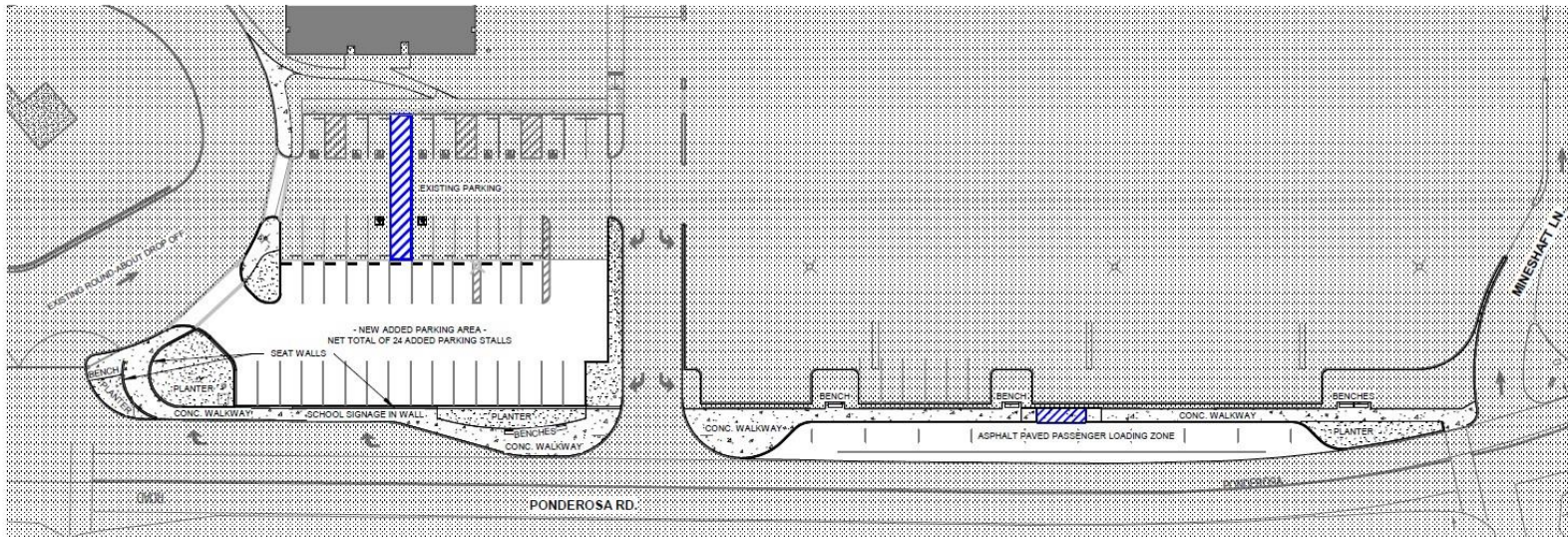
# Ponderosa Road Bicycle & Pedestrian Improvements

- ✓ Ponderosa High School Improvements



SECTION

1/16" = 1'-0"



SITE PLAN

1" = 40'-0"

EL DORADO UNION SCHOOL DISTRICT  
PONDEROSA HS PV & PARKING STUDY  
SITE PLAN + SECTION



CALIFORNIA DESIGN WEST ARCHITECTS INC.



## Ponderosa Road Bicycle & Pedestrian Improvements

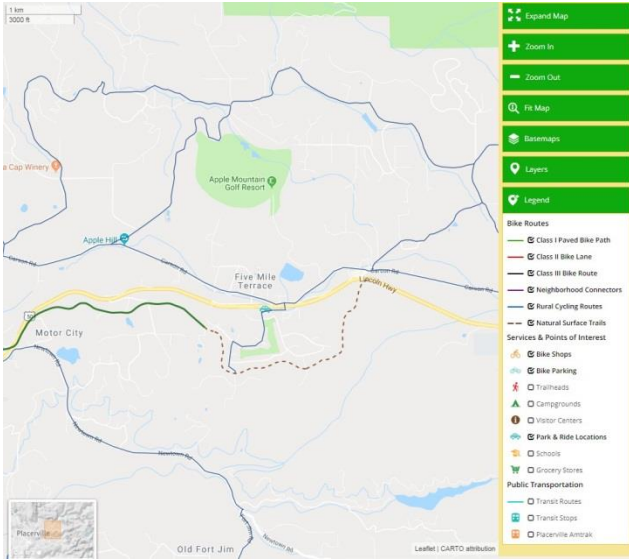
### Approx. Project Look Ahead Schedule:

- ✓ Planning & Environmental – 2019
- ✓ Right- of- Way (ROW) - 2019 / 2021
- ✓ Design - 2019 – 2021
- ✓ Construction - TBD



# El Dorado Trail Extension (Halcon to Carson)

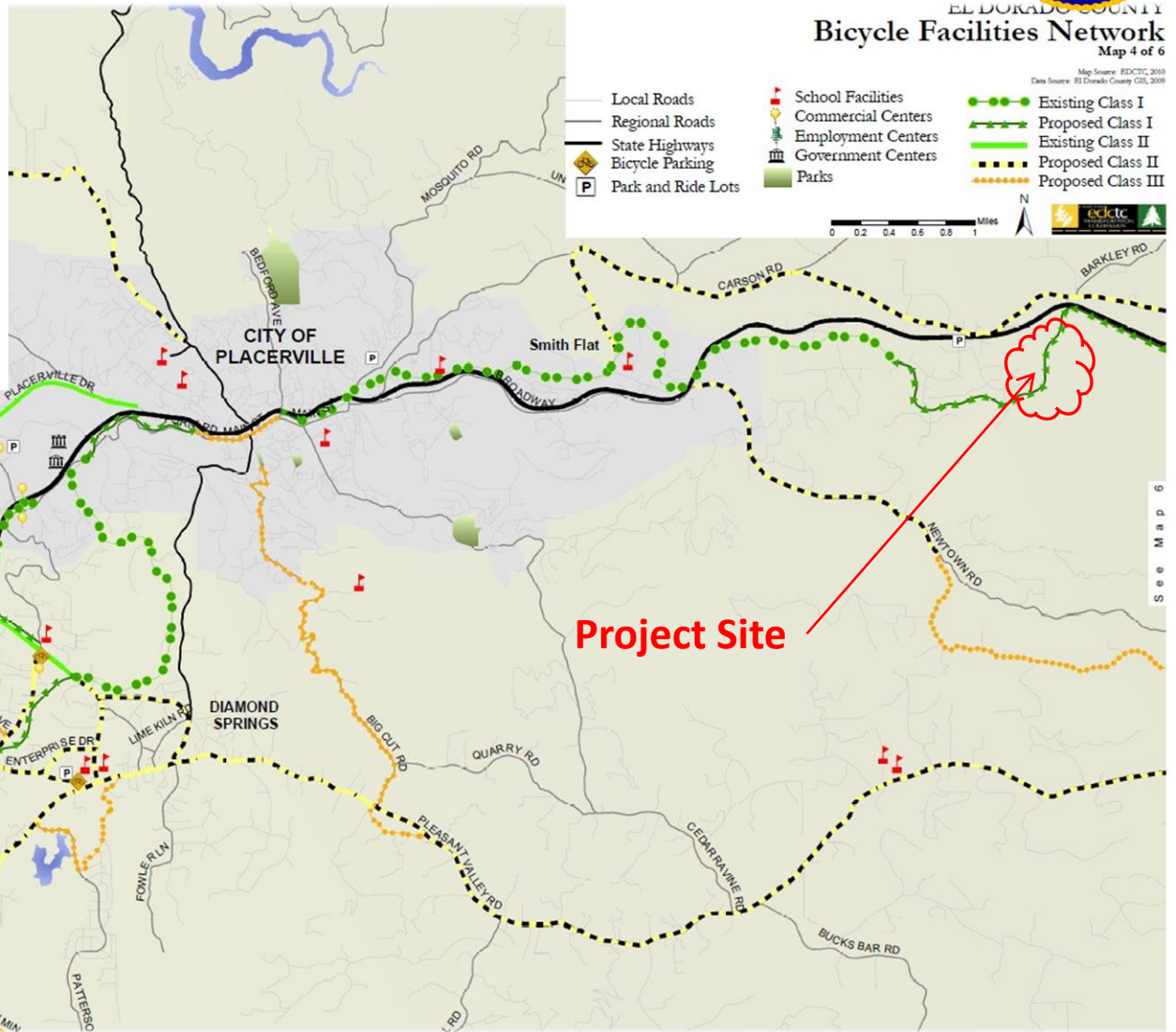
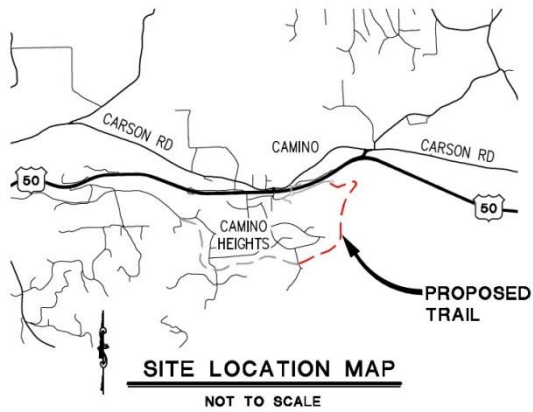
# Class 1 Trail





# El Dorado Trail Extension (Halcon to Carson)

## Class 1 Trail

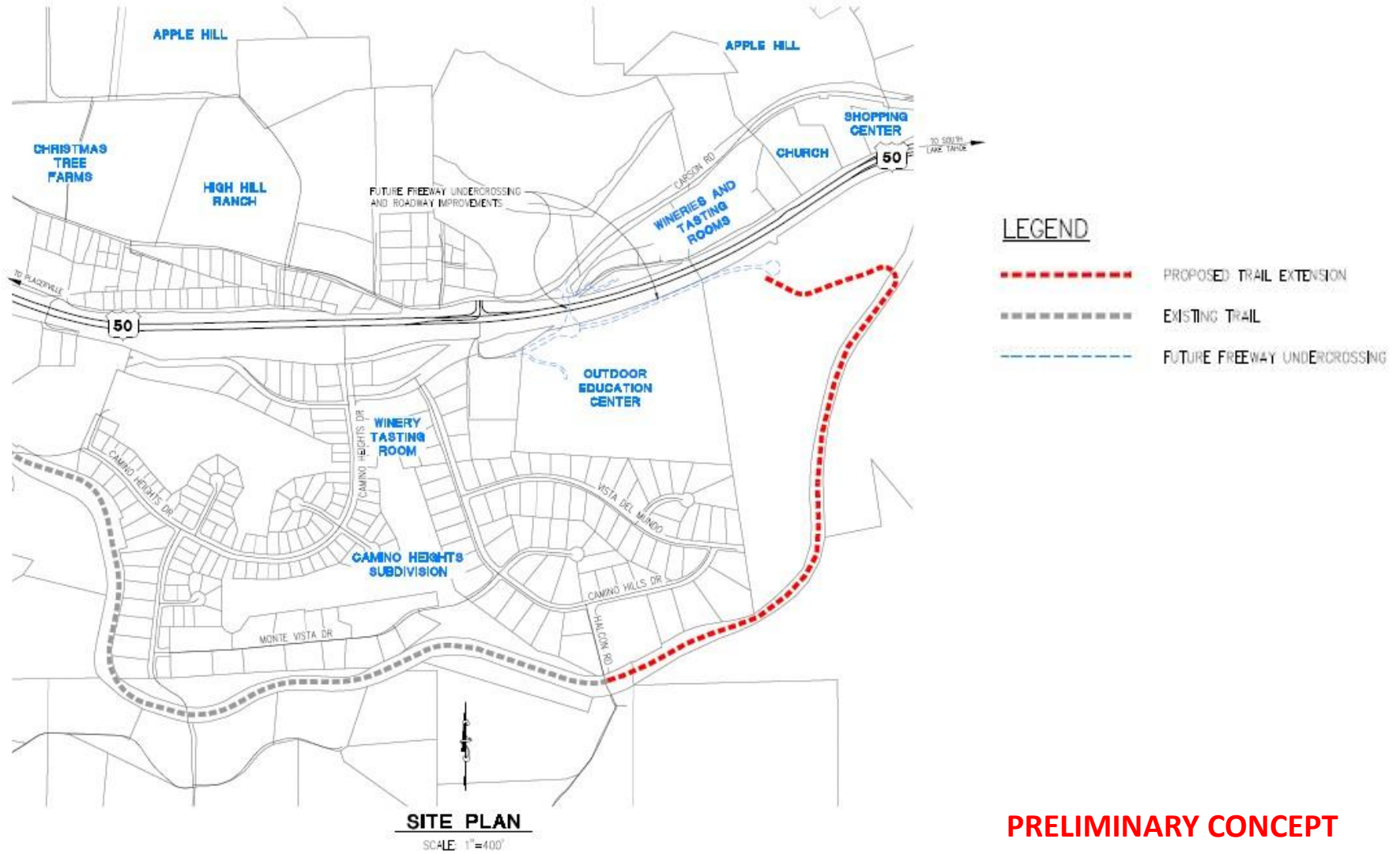






# El Dorado Trail Extension (Halcon to Carson)

## Class 1 Trail



**PRELIMINARY CONCEPT**



## El Dorado Trail Extension (Halcon to Carson)

## Class 1 Trail

### Project Overview:

- ✓ Approx. 5,000 LF of Class 1 Trail
- ✓ Constructed along old Railroad Corridor
- ✓ Drainage Improvements



**PRELIMINARY**

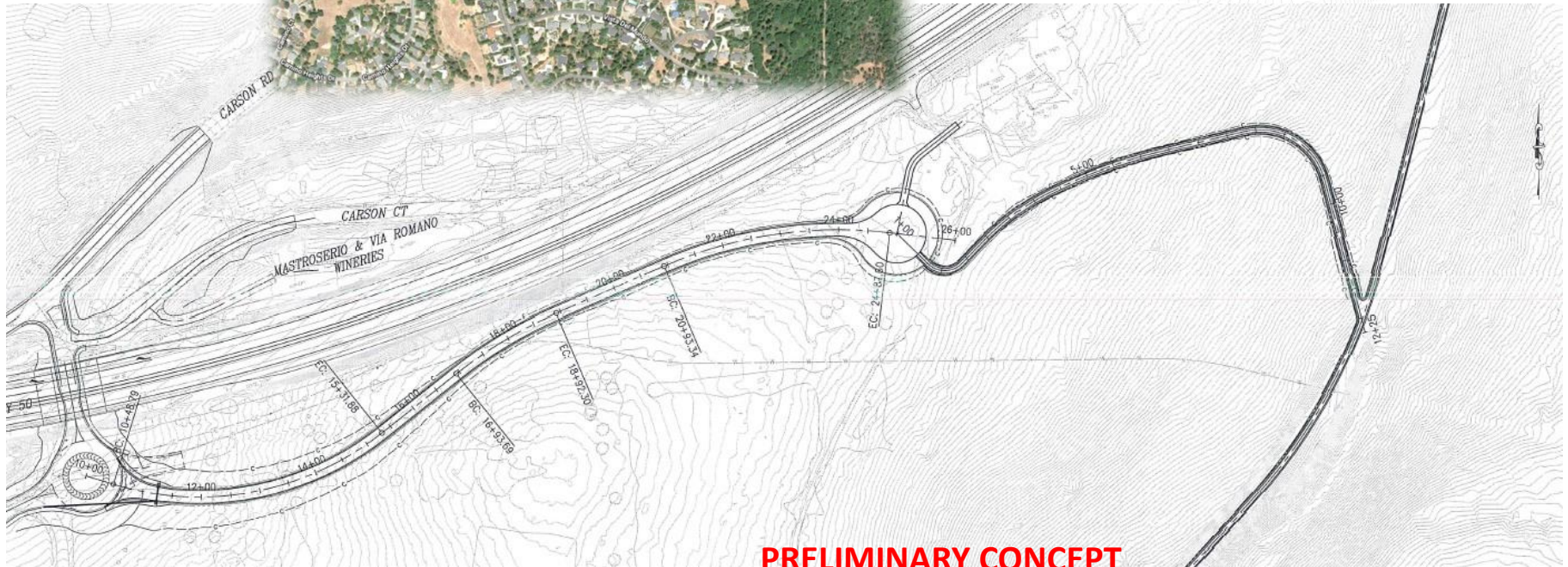
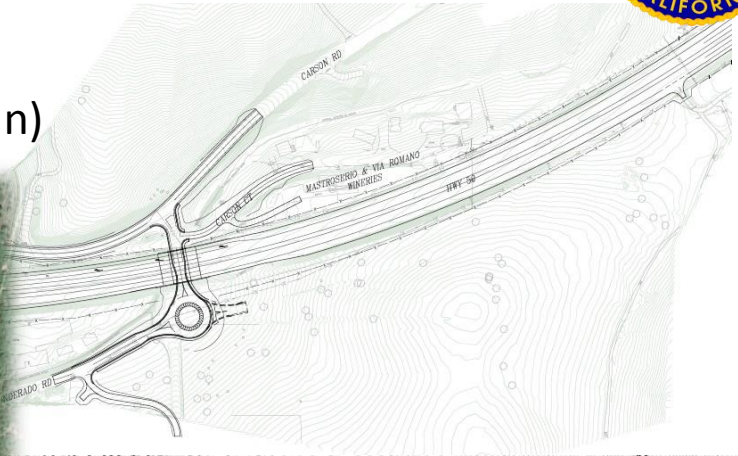


# El Dorado Trail Extension (Halcon to Carson)

Class 1 Trail

## Other Considerations:

- ✓ Possible Camino Interchange Frontage Road (Tie-In)



**PRELIMINARY CONCEPT**



# El Dorado Trail Extension (Halcon to Carson)

Class 1 Trail

## Other Considerations:

- ✓ Possible Camino Interchange Frontage Road (Tie-In)



**PRELIMINARY CONCEPT**



## El Dorado Trail Extension (Halcon to Carson)

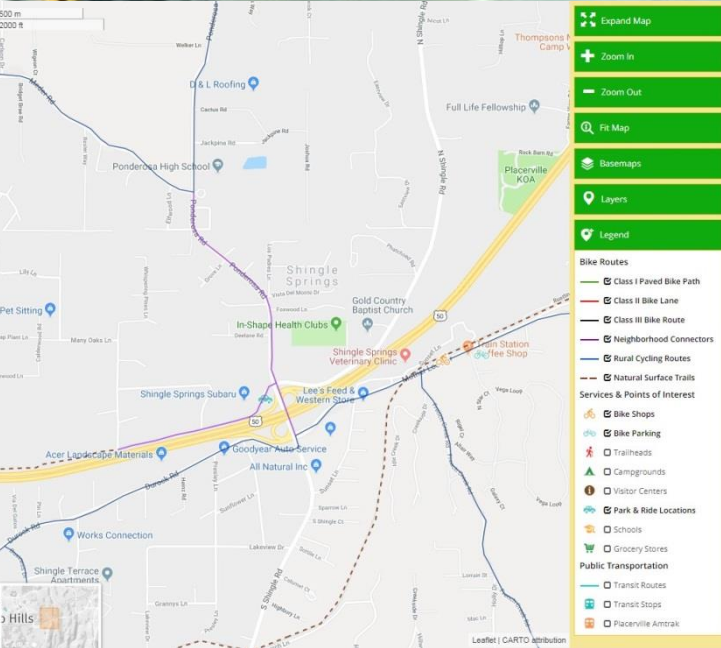
Class 1 Trail

### Approx. Project Look Ahead Schedule:

- ✓ Planning & Environmental – 2019
- ✓ Right- of- Way (ROW) - 2019/ 2021
- ✓ Design - 2019 – 2021
- ✓ Construction - TBD

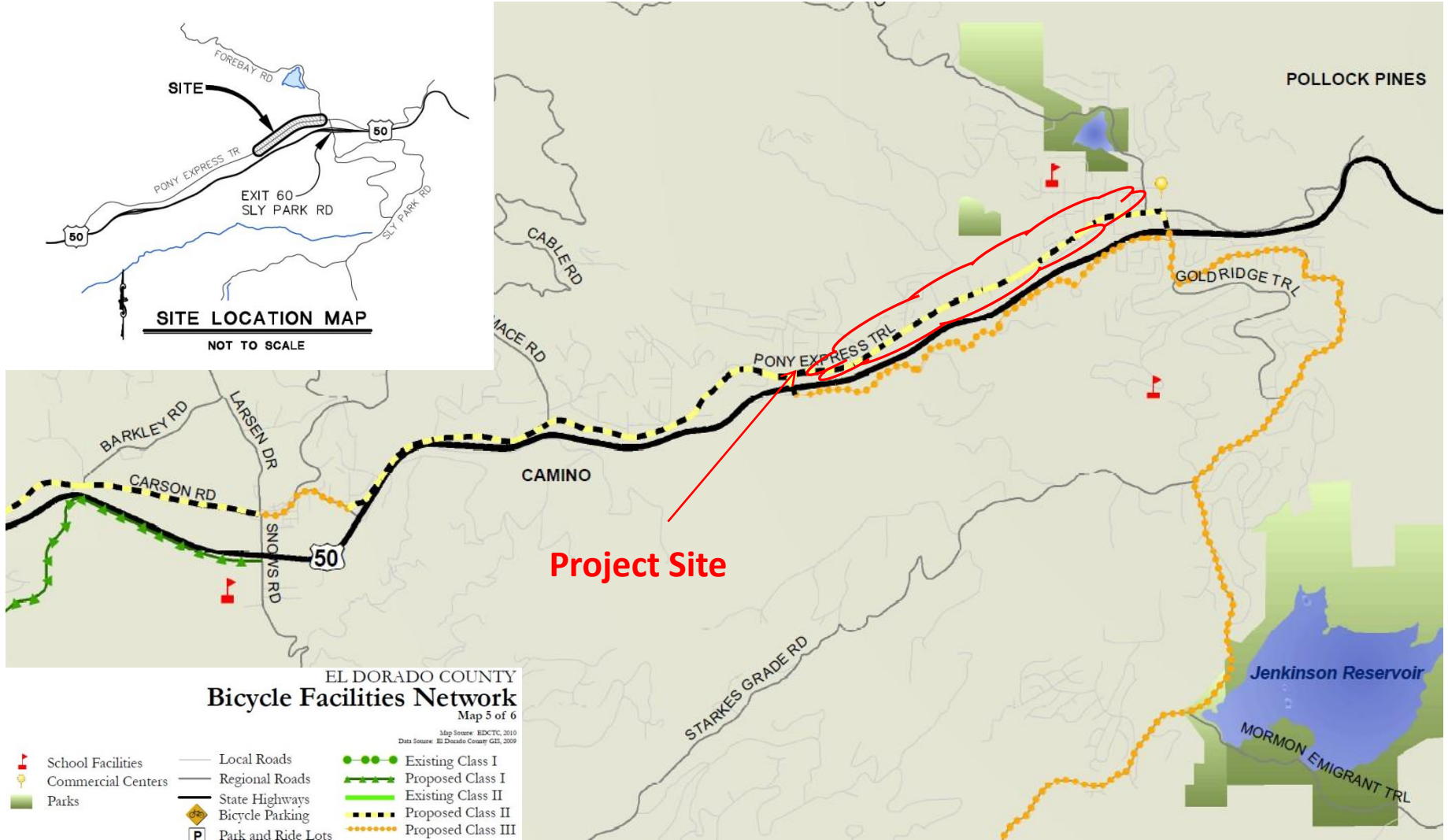
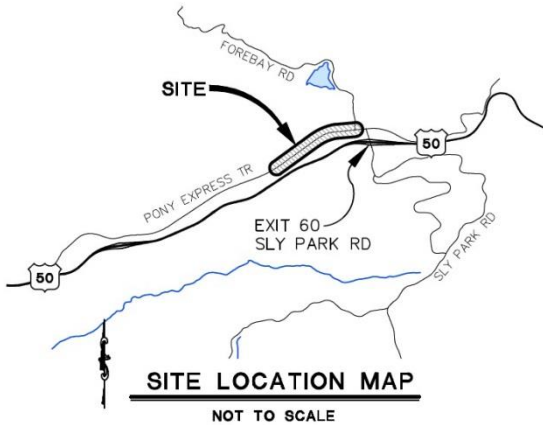


## Pony Express Trail Bicycle & Pedestrian Improvements





# Pony Express Trail Bicycle & Pedestrian Improvements





# Pony Express Trail Bicycle & Pedestrian Improvements



**PRELIMINARY**

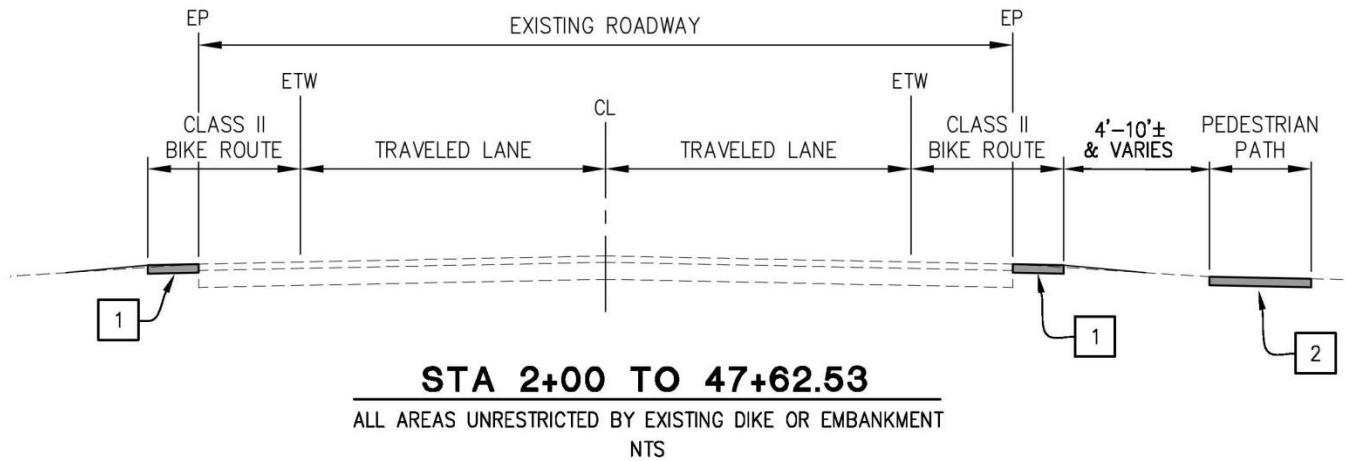




# Pony Express Trail Bicycle & Pedestrian Improvements

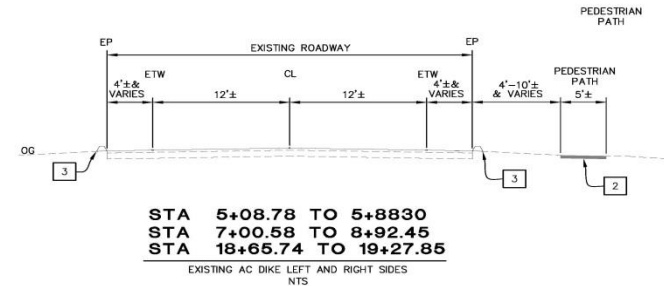
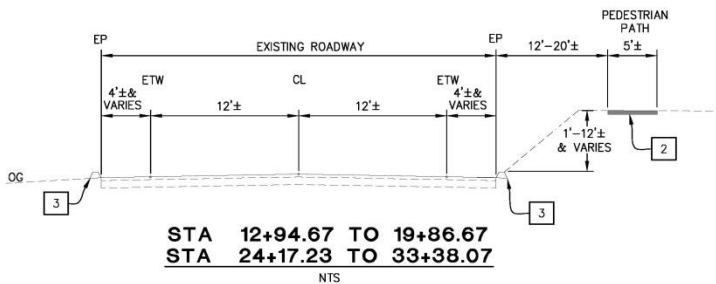
## Project Overview:

- ✓ Approx. 4,600 LF of New and/or Reconstructed Asphalt Pedestrian Walkway Improvements
- ✓ Approx. 1.7 Miles of Class II Bike Lanes



**CONSTRUCTION NOTES:**

- 1 — 0.25 HMA (TYPE A), 0.33 AB (CLASS 2)
- 2 — 0.25 HMA (TYPE A) OVER COMPACTED NATIVE
- 3 — (E)AC DIKE
- 4 — (E)AC PAVING



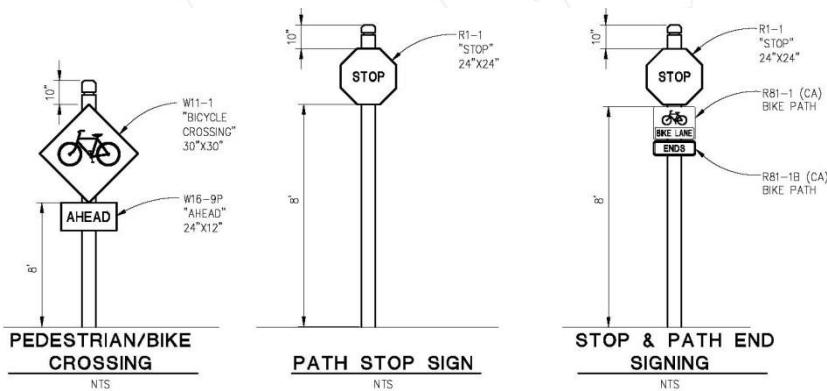
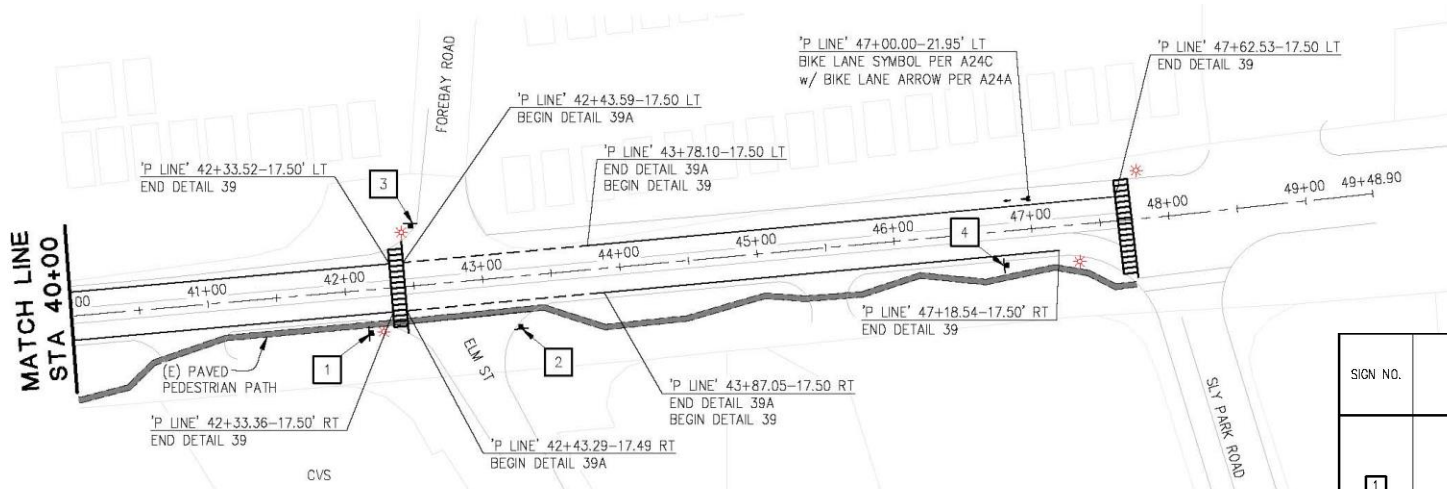
PRELIMINARY



# Pony Express Trail Bicycle & Pedestrian Improvements

## Project Overview:

- ✓ Mid-block Crosswalk Improvements and Flashing Beacons on Pony Express Trail
- ✓ Multiple ADA ramps as Feasible, Side Street Crosswalks, Drainage Improvements



**PRELIMINARY**

SIGN NO.	SIGN OR BOLLARD	CALIFORNIA MUTCD CODE
1	STOP SIGN	R1
2	PEDESTRIAN/BIKE PATHWAY CROSSING	W11-1 W16-9P
3	BIKE PATHWAY CROSSING	W11-1, W16-9P
4	PEDESTRIAN PATH ENDS	R1, R81-1, R81-1B



## Pony Express Trail Bicycle & Pedestrian Improvements

### Project Overview:

- ✓ Mid-block Crosswalk Improvements and Flashing Beacons on Pony Express Trail
- ✓ Single Post Pedestrian Safety Beacons Anticipated Unless Design Requirements Dictate More Advanced System



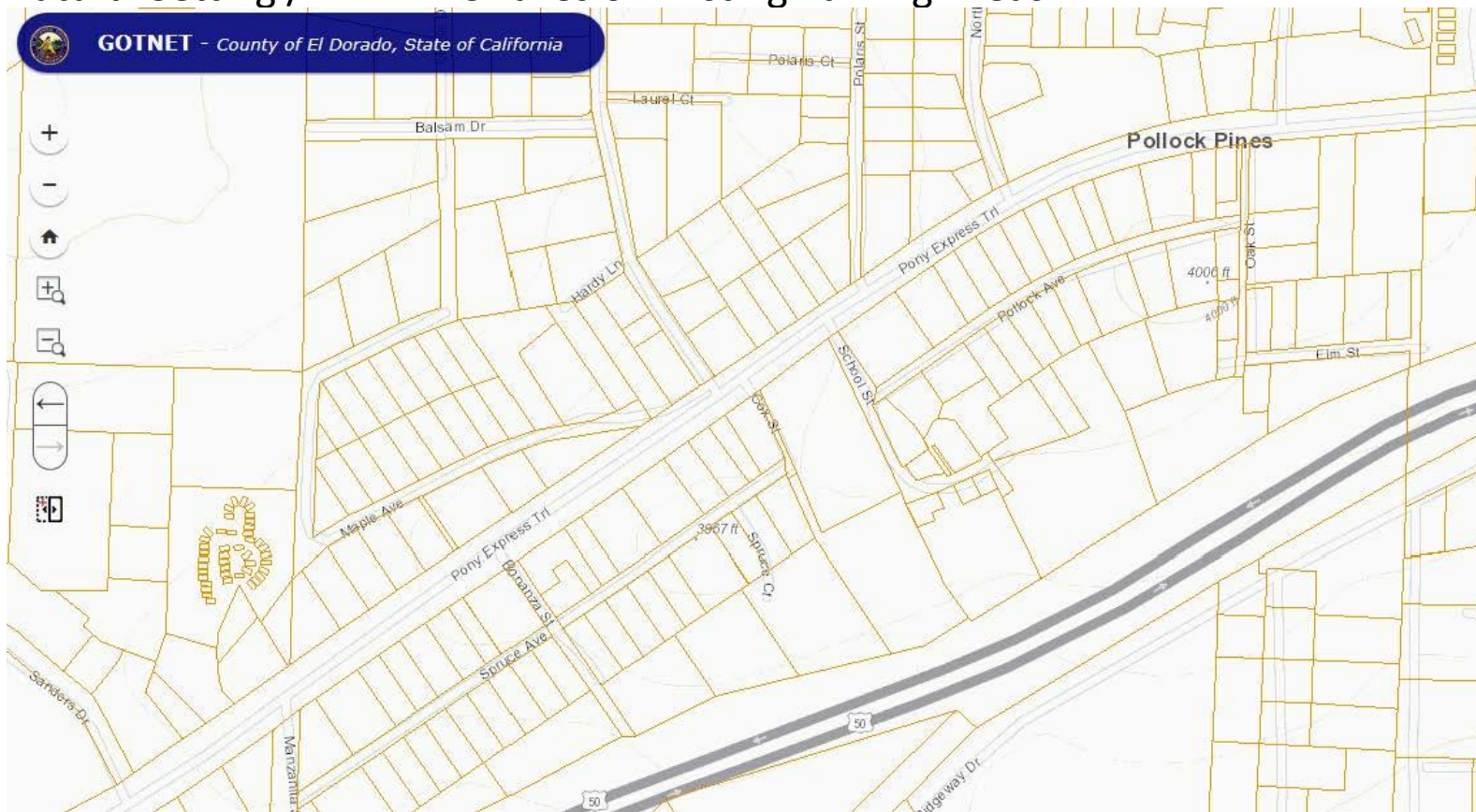
**PRELIMINARY**



## Pony Express Trail Bicycle & Pedestrian Improvements

### Project Overview:

- ✓ Majority of Project in Existing Right of Way With Improvements to Existing Facilities
- ✓ Minimal Right of Way Acquisition Anticipated / Minimize Take of Trees / Maintain Natural Setting / Minimize Takes of Existing Parking Areas

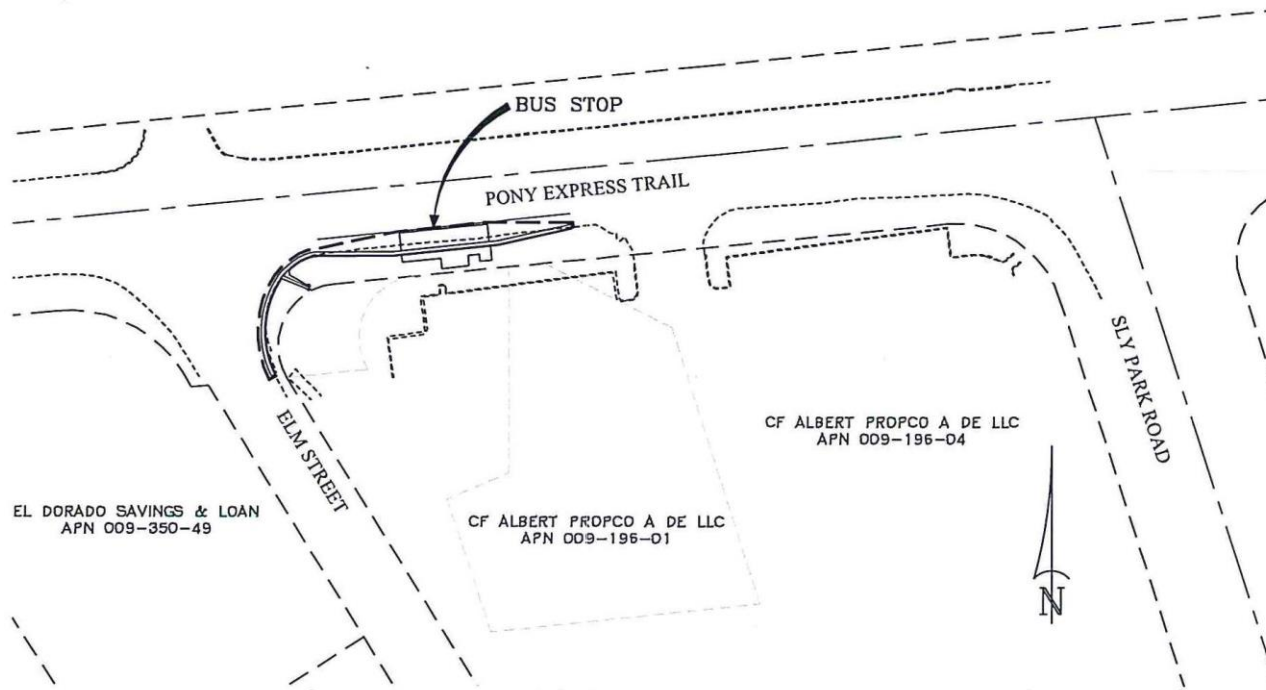




## Pony Express Trail Bicycle & Pedestrian Improvements

### Project Overview:

- ✓ Overlap with El Dorado County Transit Improvements at Pony Express Trail Bus Stop (at Safeway) Scheduled for Completion this Season
- ✓ Improvements to Drainage, Sidewalk, and Safe Passage of Traffic



PROJECT SITE



## Pony Express Trail Bicycle & Pedestrian Improvements

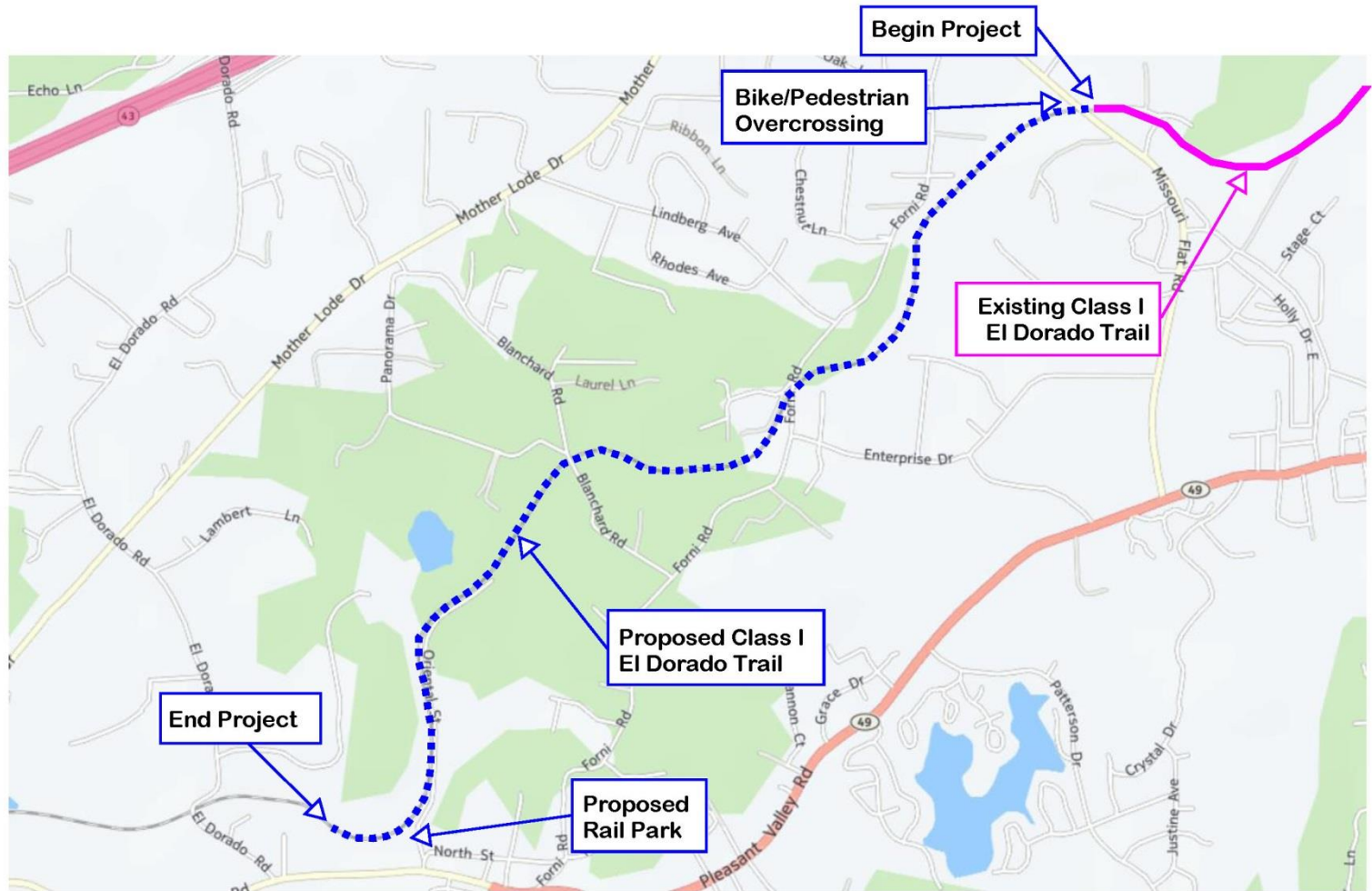
### Approx. Project Look Ahead Schedule:

- ✓ Planning & Environmental – 2019
- ✓ Right- of- Way (ROW) - 2019 / 2021
- ✓ Design - 2019 – 2021
- ✓ Construction - TBD



## El Dorado Trail Other Project Updates

- ✓ El Dorado Trail Extension





## El Dorado Trail Other Project Updates

- ✓ El Dorado Trail Extension

**PRELIMINARY CONCEPT**







## El Dorado Trail Other Project Updates

- ✓ El Dorado Trail Extension

**PRELIMINARY CONCEPT**





## Questions



<https://www.edcgov.us/Government/dot/projects>

[https://www.edcgov.us/Government/Parks/Pages/el\\_dorado\\_trail.aspx](https://www.edcgov.us/Government/Parks/Pages/el_dorado_trail.aspx)

<https://www.edctc.org>

Contact Us at: [dotengineering@edcgov.us](mailto:dotengineering@edcgov.us)