



**COUNTY OF EL DORADO  
DEPARTMENT OF TRANSPORTATION**

# Bicycle & Pedestrian Improvements

## **PROJECT UPDATES**



*Public Meeting*

*August 20, 2020*



## AGENDA

- Welcome / Introductions

## PROJECT UPDATES

- Bicycle Plan Overview
- Ponderosa Road
- Pony Express Trail
- Missouri Flat Road  
Pedestrian Overcrossing

## OPEN DISCUSSION

- Open Discussion





## AGENDA

↳ Welcome / Introductions

## PROJECT UPDATES

↳ Bicycle Plan Overview

↳ Ponderosa Road

↳ Pony Express Trail

↳ Missouri Flat Road

Pedestrian Overcrossing

## OPEN DISCUSSION

↳ Open Discussion





## AGENDA

→ Welcome / Introductions

## PROJECT UPDATES

→ Bicycle Plan Overview

→ Ponderosa Road

→ Pony Express Trail

→ Missouri Flat Road

**Pedestrian Overcrossing**

## OPEN DISCUSSION

→ Open Discussion

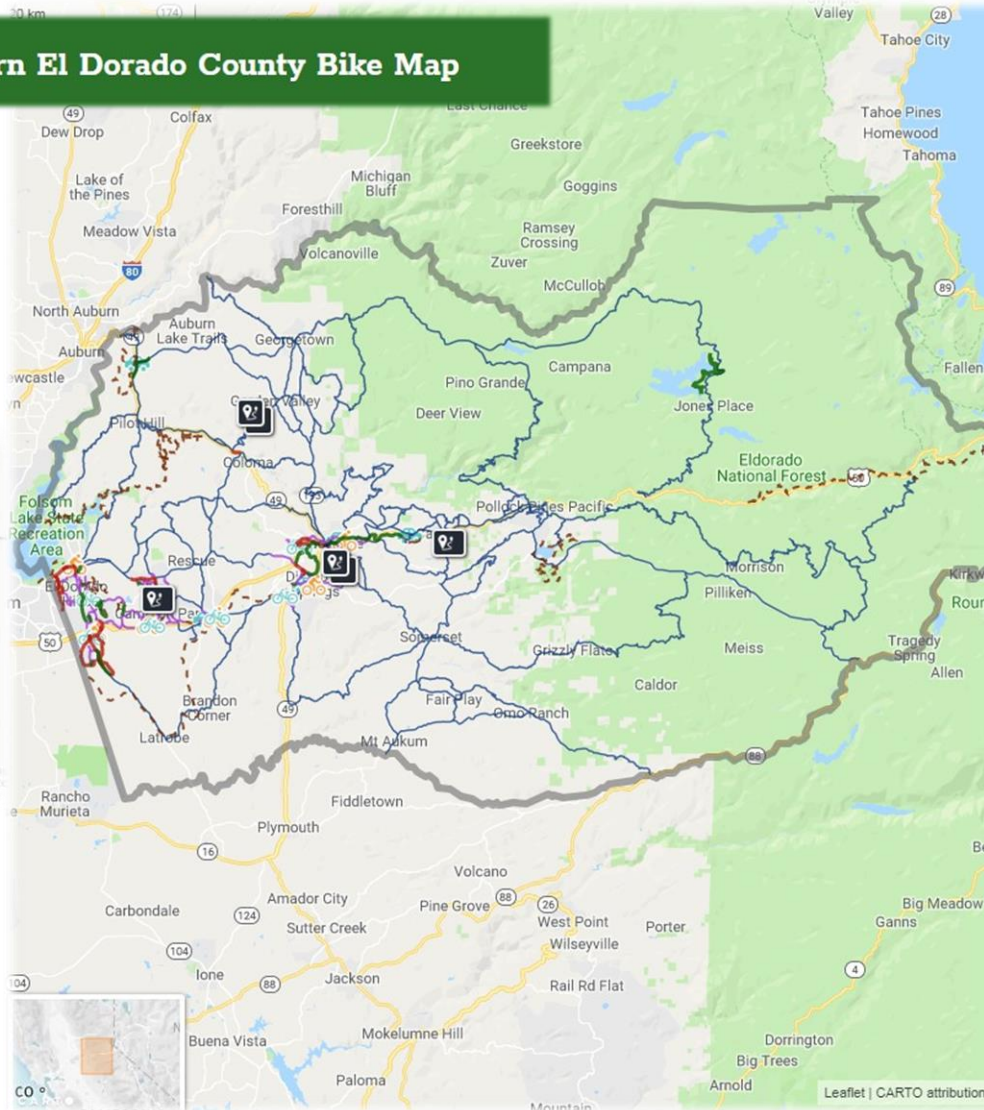




## El Dorado County Bicycle Transportation Plan Overview



### Western El Dorado County Bike Map



- Expand Map
- Zoom In
- Zoom Out
- Fit Map
- Basemaps
- Layers
- Legend

**Bike Routes**

- Class I Paved Bike Path
- Class II Bike Lane
- Class III Bike Route
- Neighborhood Connectors
- Rural Cycling Routes
- Natural Surface Trails

**Services & Points of Interest**

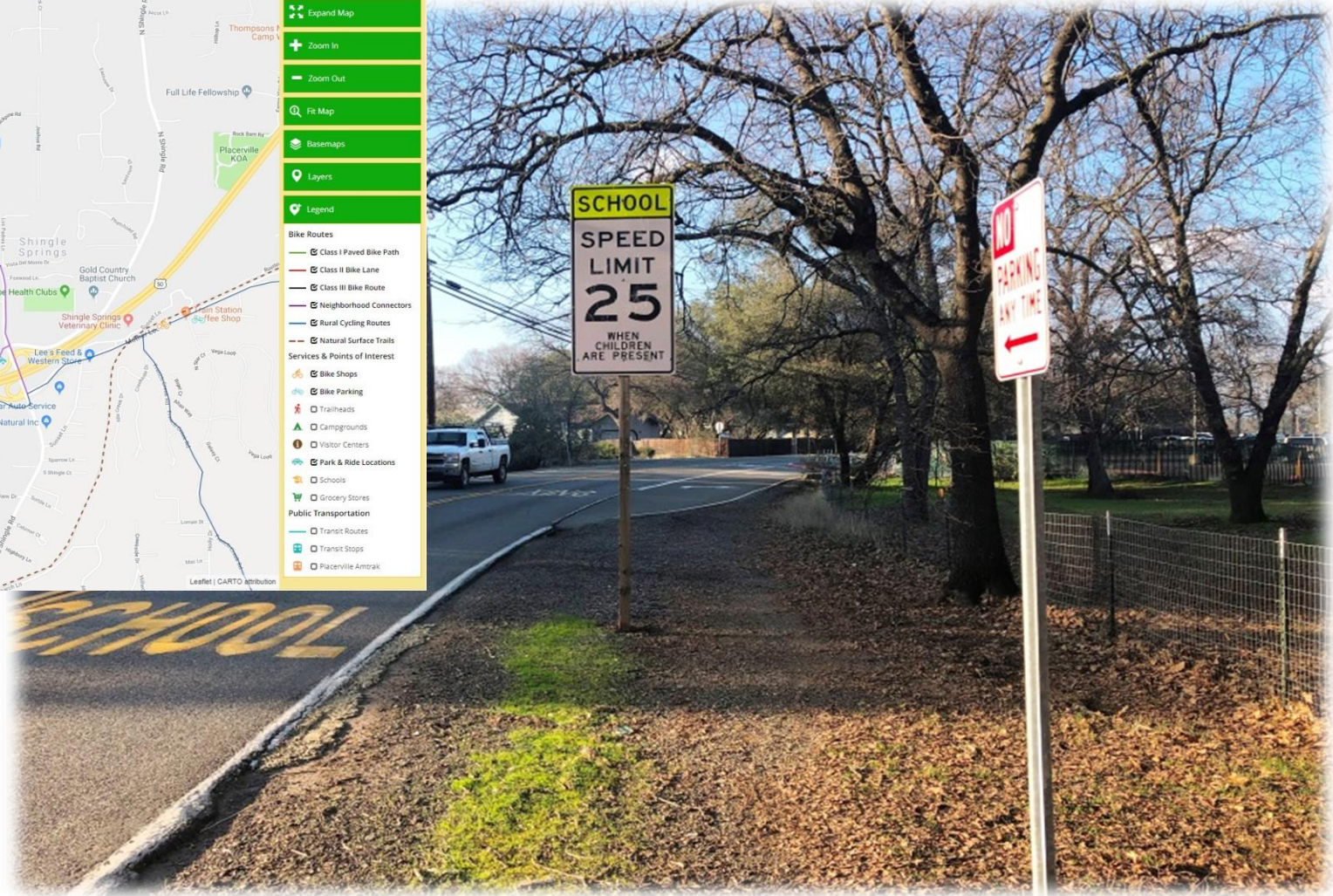
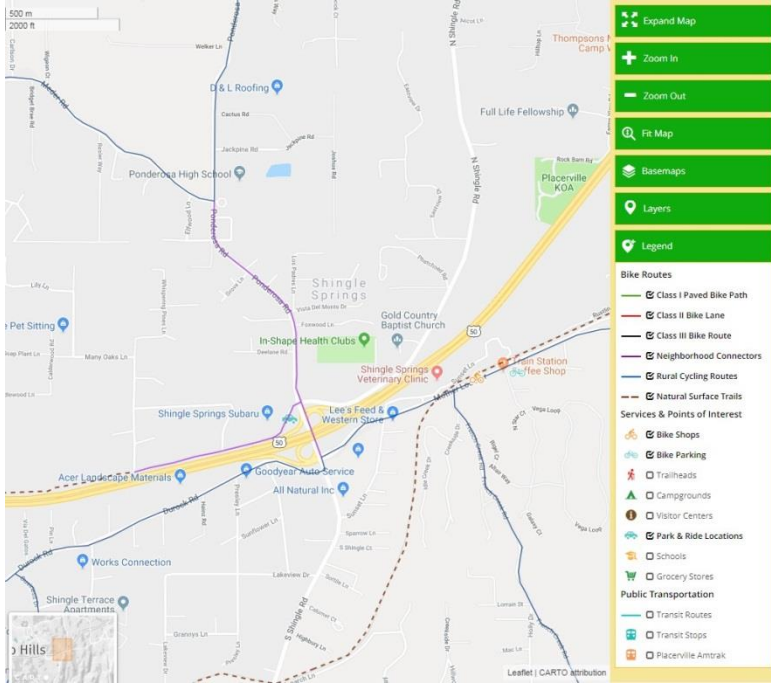
- Bike Shops
- Bike Parking
- Trailheads
- Campgrounds
- Visitor Centers
- Park & Ride Locations
- Schools
- Grocery Stores

**Public Transportation**

- Transit Routes
- Transit Stops
- Placerville Amtrak

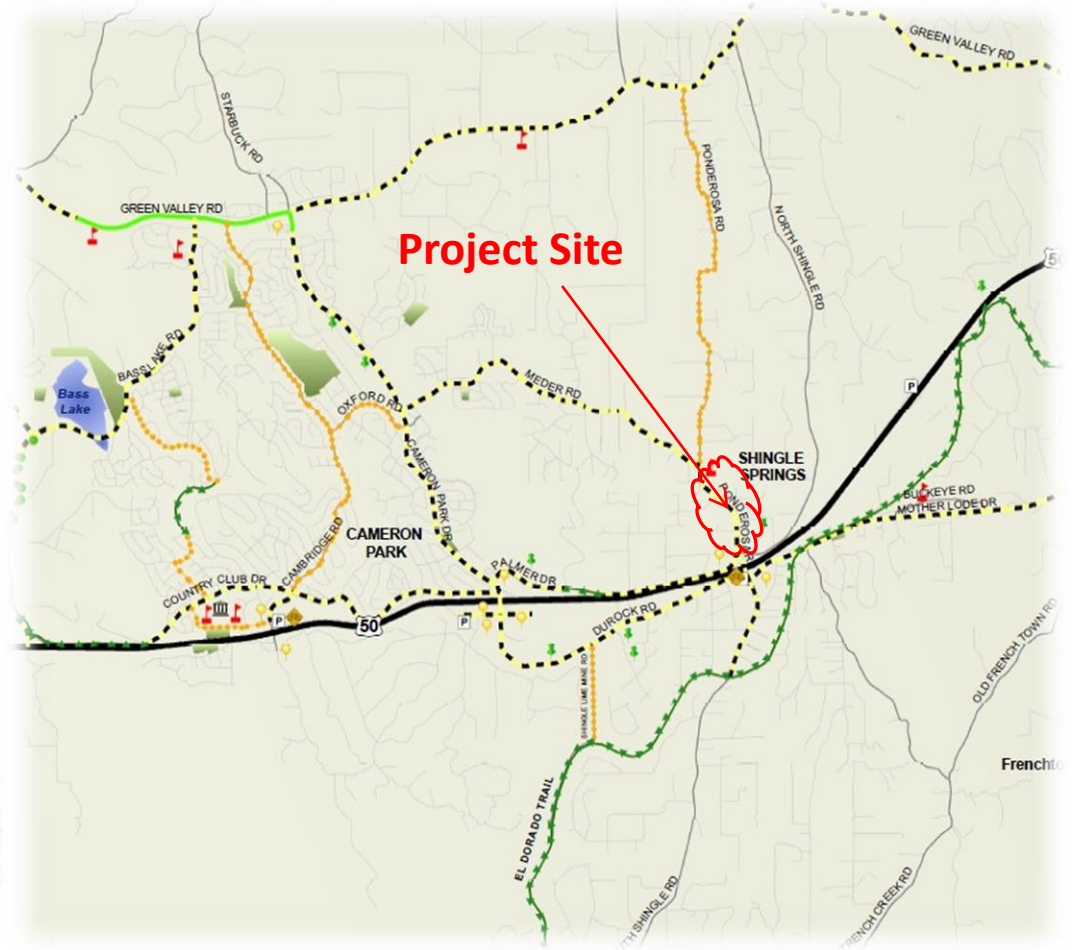


# Ponderosa Road Bicycle & Pedestrian Improvements





# Ponderosa Road Bicycle & Pedestrian Improvements



## EL DORADO COUNTY Bicycle Facilities Network Map 5 of 6

Map Source: EDCTC, 2010  
Data Source: El Dorado County GIS, 2009

- |                    |                    |                    |
|--------------------|--------------------|--------------------|
| School Facilities  | Local Roads        | Existing Class I   |
| Commercial Centers | Regional Roads     | Proposed Class I   |
| Parks              | State Highways     | Existing Class II  |
|                    | Bicycle Parking    | Proposed Class II  |
|                    | Park and Ride Lots | Proposed Class III |



# Ponderosa Road Bicycle & Pedestrian Improvements



## LEGEND

- PROPOSED CLASS II BIKE LANE
- FUTURE CLASS II BIKE LANE (AS PART OF INTERCHANGE)
- PROPOSED SIDEWALK
- FUTURE SIDEWALK (AS PART OF INTERCHANGE PROJECT)
- FUTURE SIDEWALK (AS PART OF HIGH SCHOOL PROJECT)
- EXISTING SIDEWALK
- PROPOSED CROSSWALK
- EXISTING CROSSWALK

**PRELIMINARY**

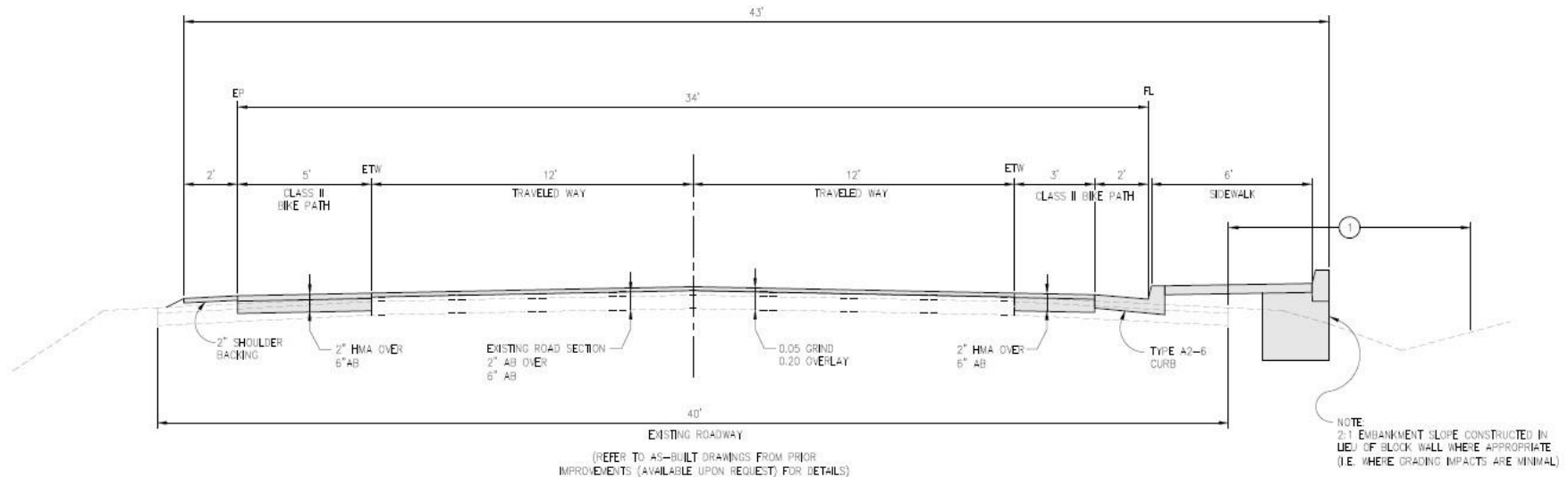




## Ponderosa Road Bicycle & Pedestrian Improvements

### Project Overview:

- ✓ Approx. 1,900 LF of Sidewalk
- ✓ Approx. 3,800 LF of Class II Bike Lanes
- ✓ Connects Ponderosa High School to Foxwood (integrates with Future Interchange)
- ✓ Multiple ADA ramps, Drainage Improvements



**PRELIMINARY**

**NOTES:**

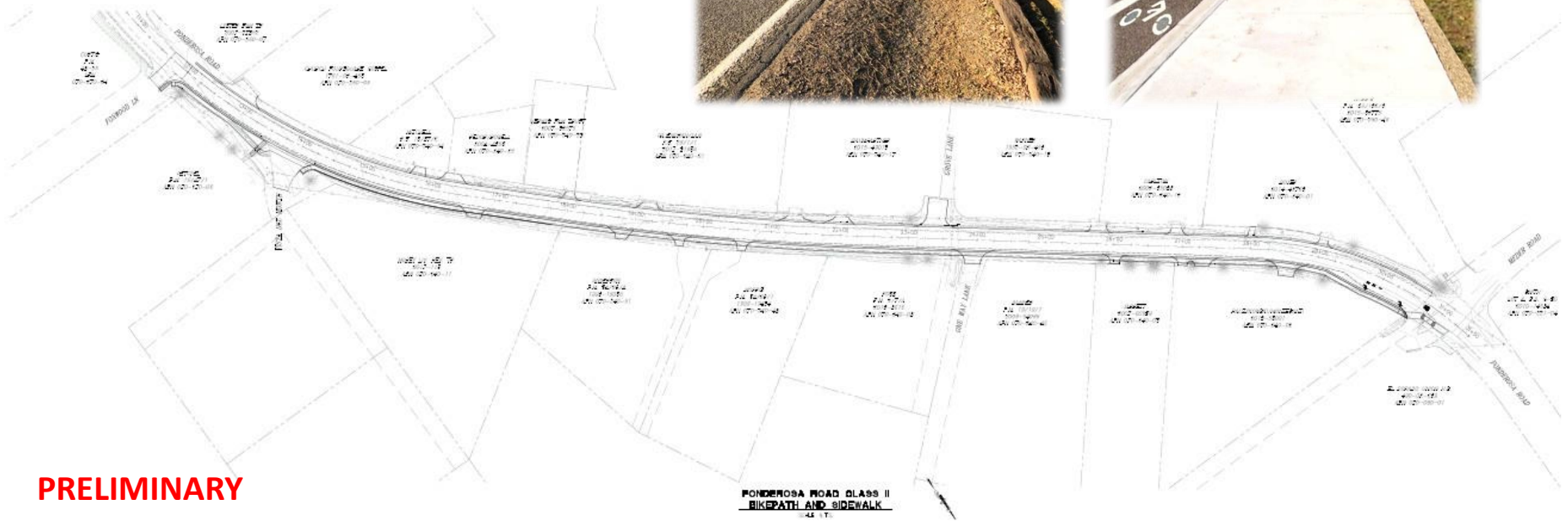
- ① — EXISTING COUNTY MAINTAINED ROADWAY SHOULDER AND ROADSIDE DITCH



## Ponderosa Road Bicycle & Pedestrian Improvements

### Project Overview:

- ✓ Minimize Right of Way Impacts



**PRELIMINARY**

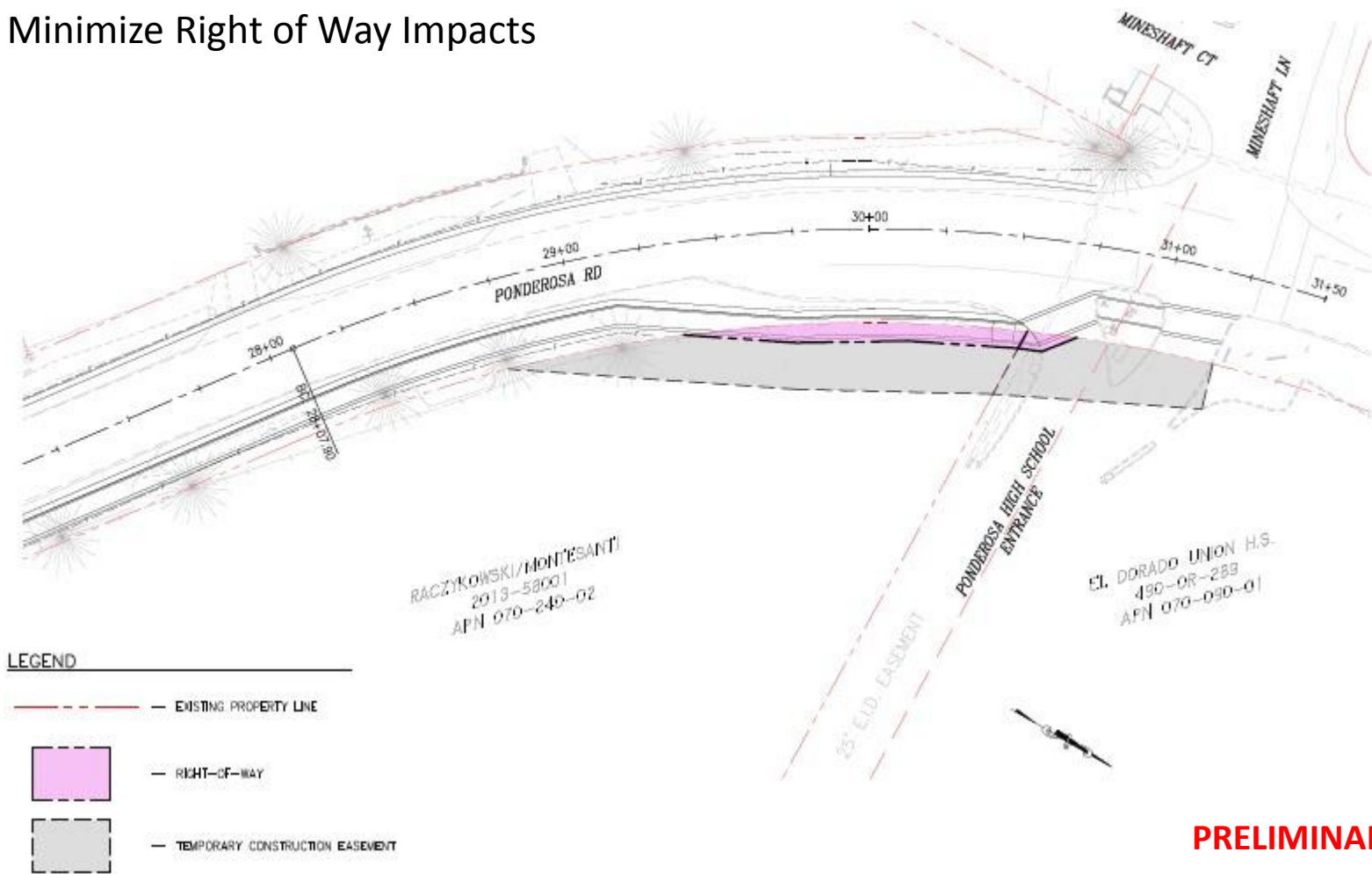
PONDEROSA ROAD CLASS II  
BIKEPATH AND SIDEWALK  
44' T



# Ponderosa Road Bicycle & Pedestrian Improvements

## Project Overview:

- ✓ Minimize Right of Way Impacts



**PRELIMINARY**





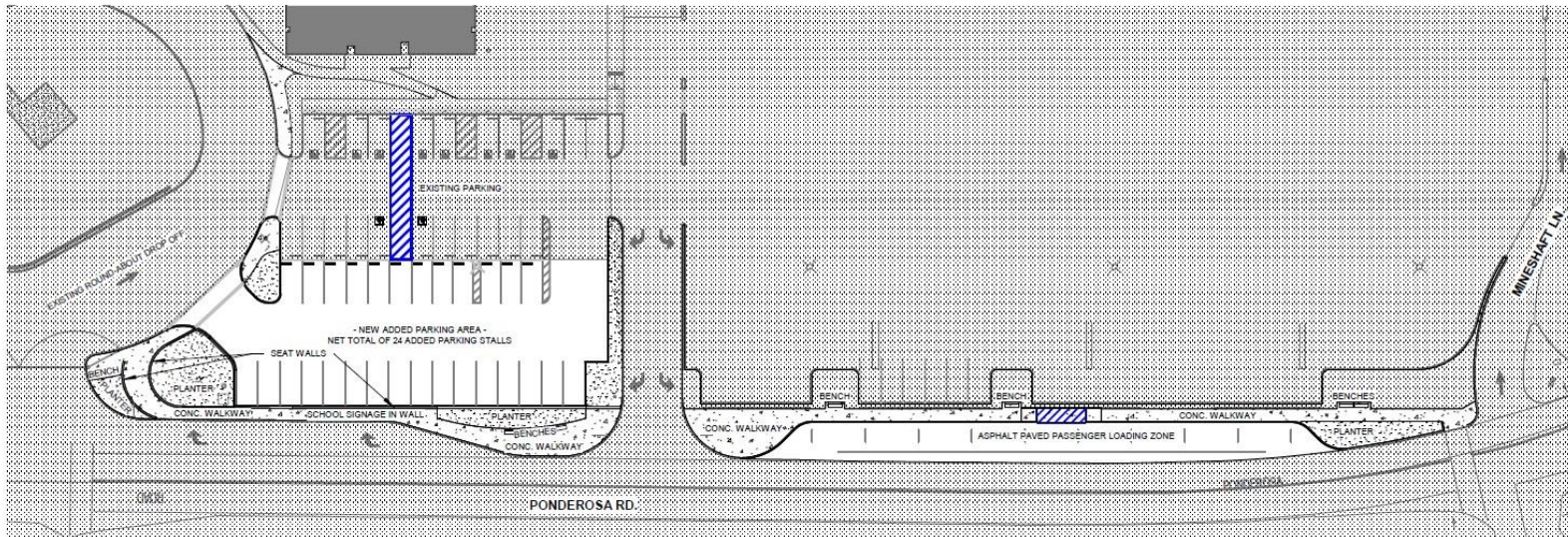
# Ponderosa Road Bicycle & Pedestrian Improvements

## ✓ Ponderosa High School Improvements



SECTION

1/16" = 1'-0"



SITE PLAN

1" = 40'-0"

EL DORADO UNION SCHOOL DISTRICT  
PONDEROSA HS PV & PARKING STUDY  
SITE PLAN + SECTION



CALIFORNIA DESIGN WEST ARCHITECTS INC.



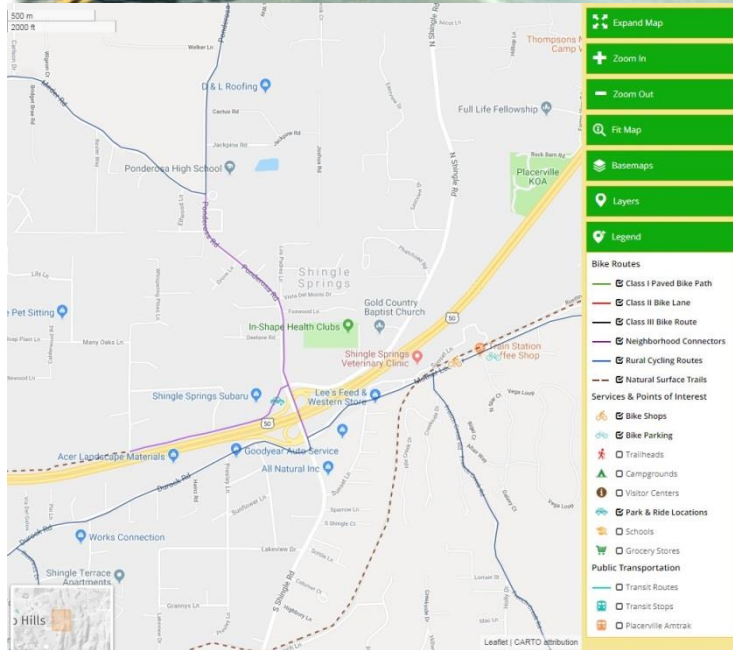
## Ponderosa Road Bicycle & Pedestrian Improvements

### Approx. Project Look Ahead Schedule:

- ✓ Planning & Environmental – 2019
- ✓ Right- of- Way (ROW) - 2019 / 2020
- ✓ Design - 2019 – 2021
- ✓ Construction - TBD
  
- ✓ Currently pursuing construction grant opportunities through State Active Transportation Program and other funds

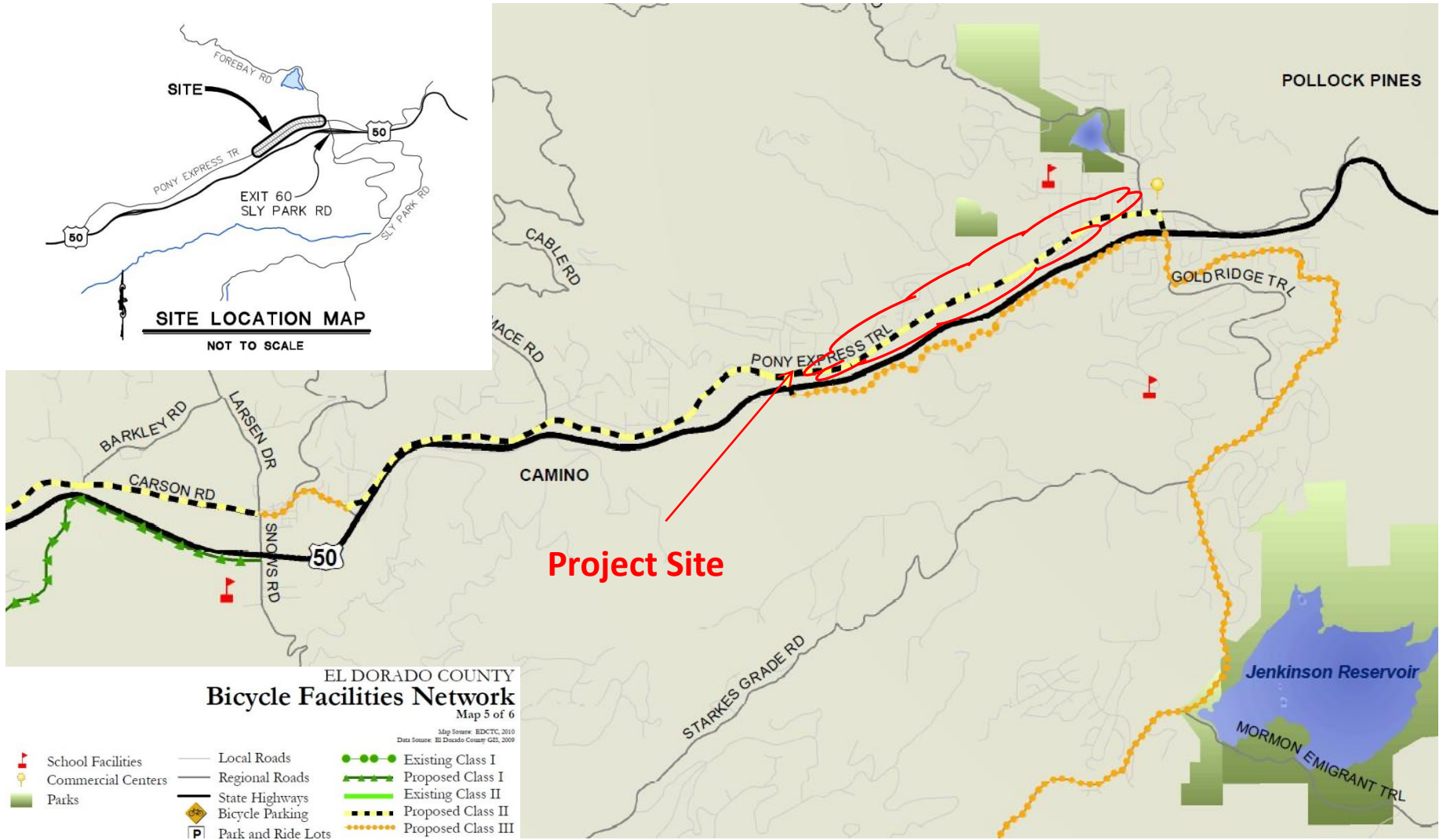
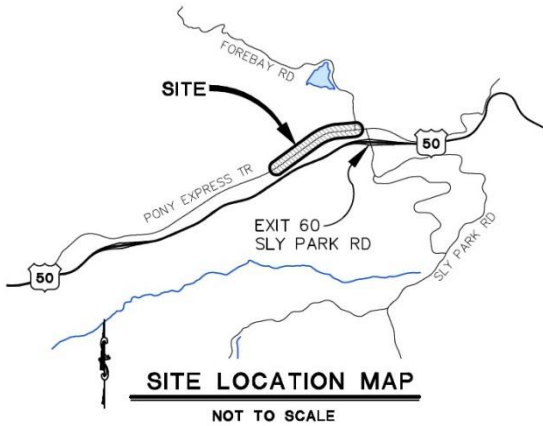


## Pony Express Trail Bicycle & Pedestrian Improvements





# Pony Express Trail Bicycle & Pedestrian Improvements



EL DORADO COUNTY  
Bicycle Facilities Network  
Map 5 of 6

Map Source: EDCTC, 2010  
Data Source: El Dorado County GIS, 2009

- School Facilities
- Commercial Centers
- Parks
- Local Roads
- Regional Roads
- State Highways
- Bicycle Parking
- Park and Ride Lots
- Existing Class I
- Proposed Class I
- Existing Class II
- Proposed Class II
- Proposed Class III

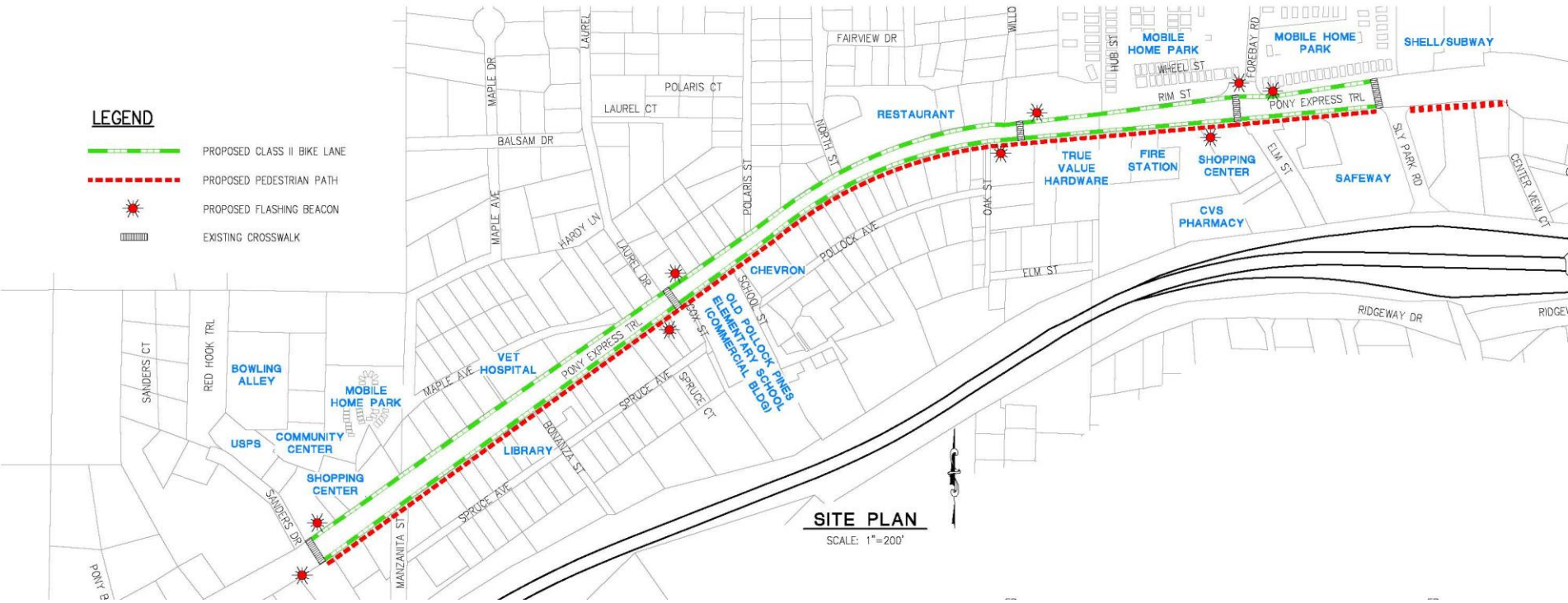




# Pony Express Trail Bicycle & Pedestrian Improvements

## LEGEND

- PROPOSED CLASS II BIKE LANE
- PROPOSED PEDESTRIAN PATH
- PROPOSED FLASHING BEACON
- EXISTING CROSSWALK



**SITE PLAN**  
SCALE: 1"=200'

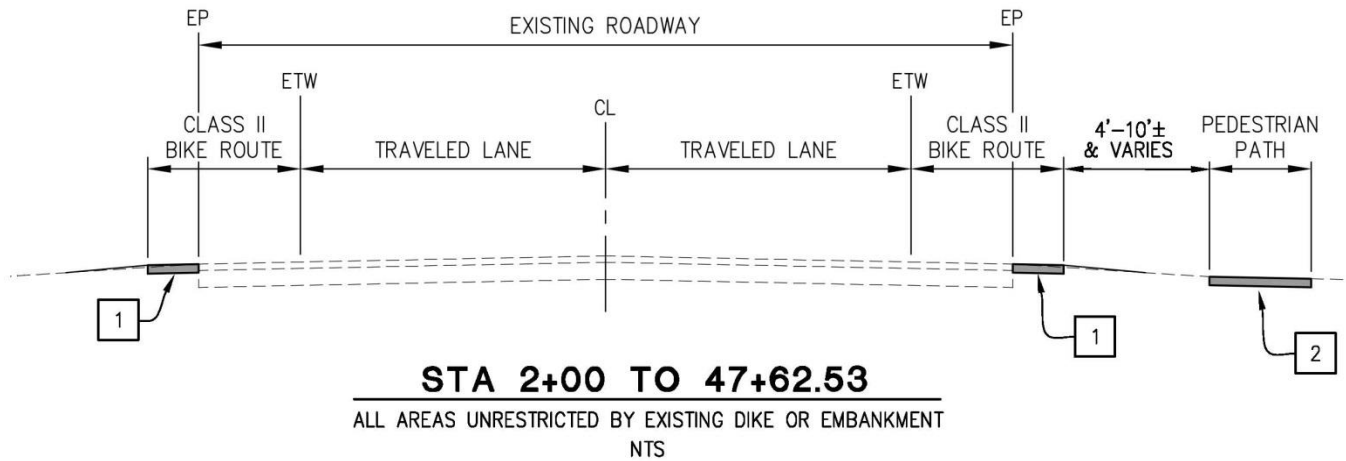
**PRELIMINARY**



# Pony Express Trail Bicycle & Pedestrian Improvements

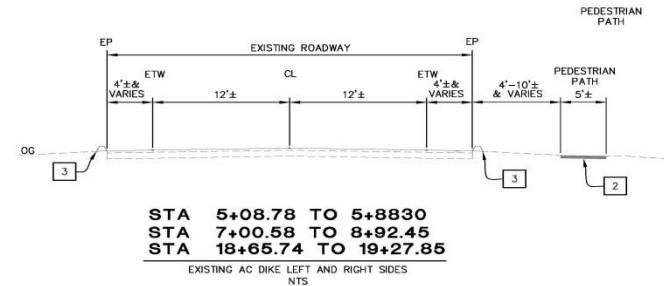
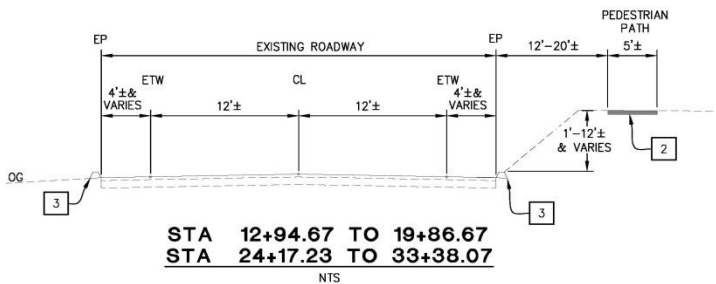
## Project Overview:

- ✓ Approx. 4,650 LF of New and/or Reconstructed Asphalt Pedestrian Walkway Improvements and Concrete Sidewalk, Curb, & Gutter
- ✓ Approx. 1.7 Miles of Class II Bike Lanes



**CONSTRUCTION NOTES:**

- 1 — 0.25 HMA (TYPE A), 0.33 AB (CLASS 2)
- 2 — 0.25 HMA (TYPE A) OVER COMPACTED NATIVE
- 3 — (E)AC DIKE
- 4 — (E)AC PAVING



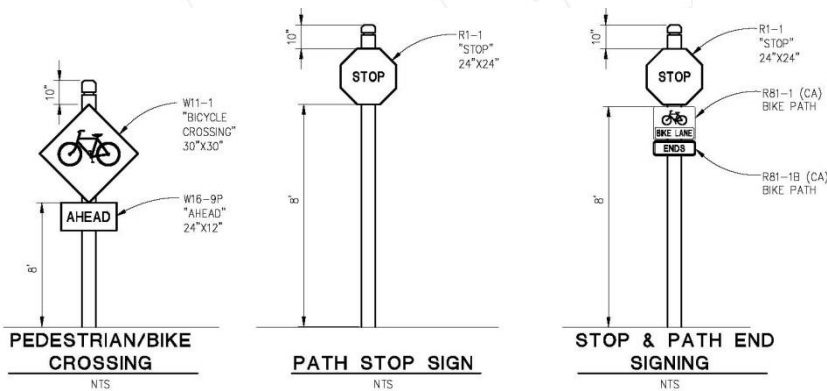
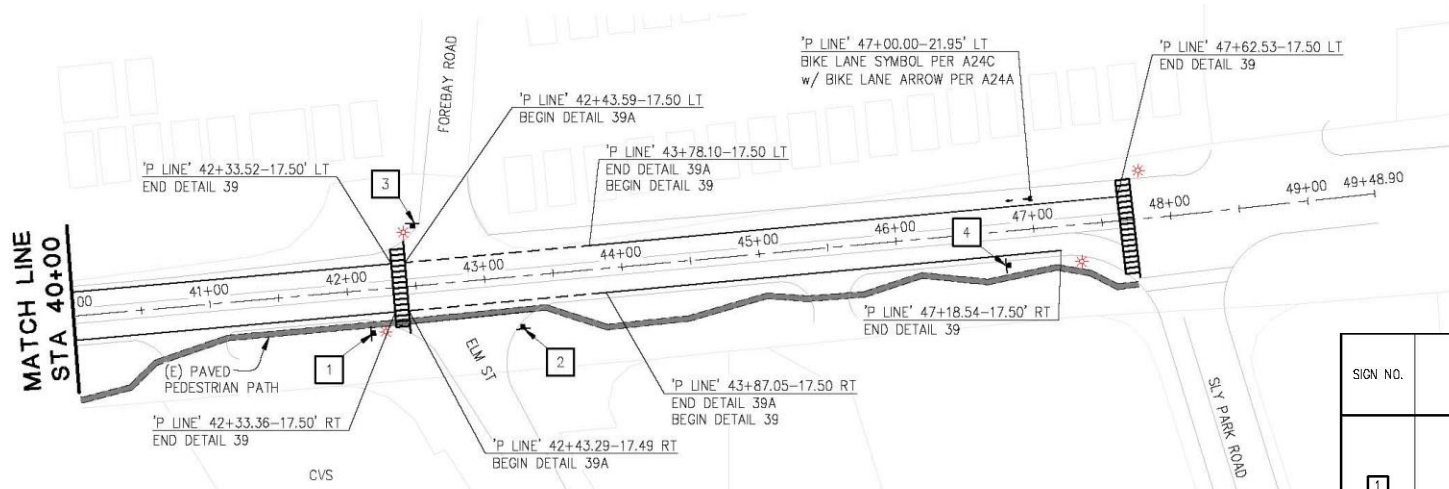
PRELIMINARY



## Pony Express Trail Bicycle & Pedestrian Improvements

### Project Overview:

- ✓ Mid-block Crosswalk Improvements and Flashing Beacons on Pony Express Trail
- ✓ Multiple ADA ramps as Feasible, Side Street Crosswalks, Drainage Improvements



**PRELIMINARY**

SIGN NO.	SIGN OR BOLLARD	CALIFORNIA MUTCD CODE
1	STOP SIGN	R1
2	PEDESTRIAN/BIKE PATHWAY CROSSING	W11-1 W16-9P
3	BIKE PATHWAY CROSSING	W11-1, W16-9P
4	PEDESTRIAN PATH ENDS	R1, R81-1, R81-1B



## Pony Express Trail Bicycle & Pedestrian Improvements

### Project Overview:

- ✓ Mid-block Crosswalk Improvements and Flashing Beacons on Pony Express Trail
- ✓ Single Post Pedestrian Safety Beacons Anticipated Unless Design Requirements Dictate More Advanced System



**PRELIMINARY**



## Pony Express Trail Bicycle & Pedestrian Improvements

### Project Overview:

- ✓ Majority of Project in Existing Right of Way With Improvements to Existing Facilities
- ✓ Right of Way Phase in progress with 4 commercial property owners

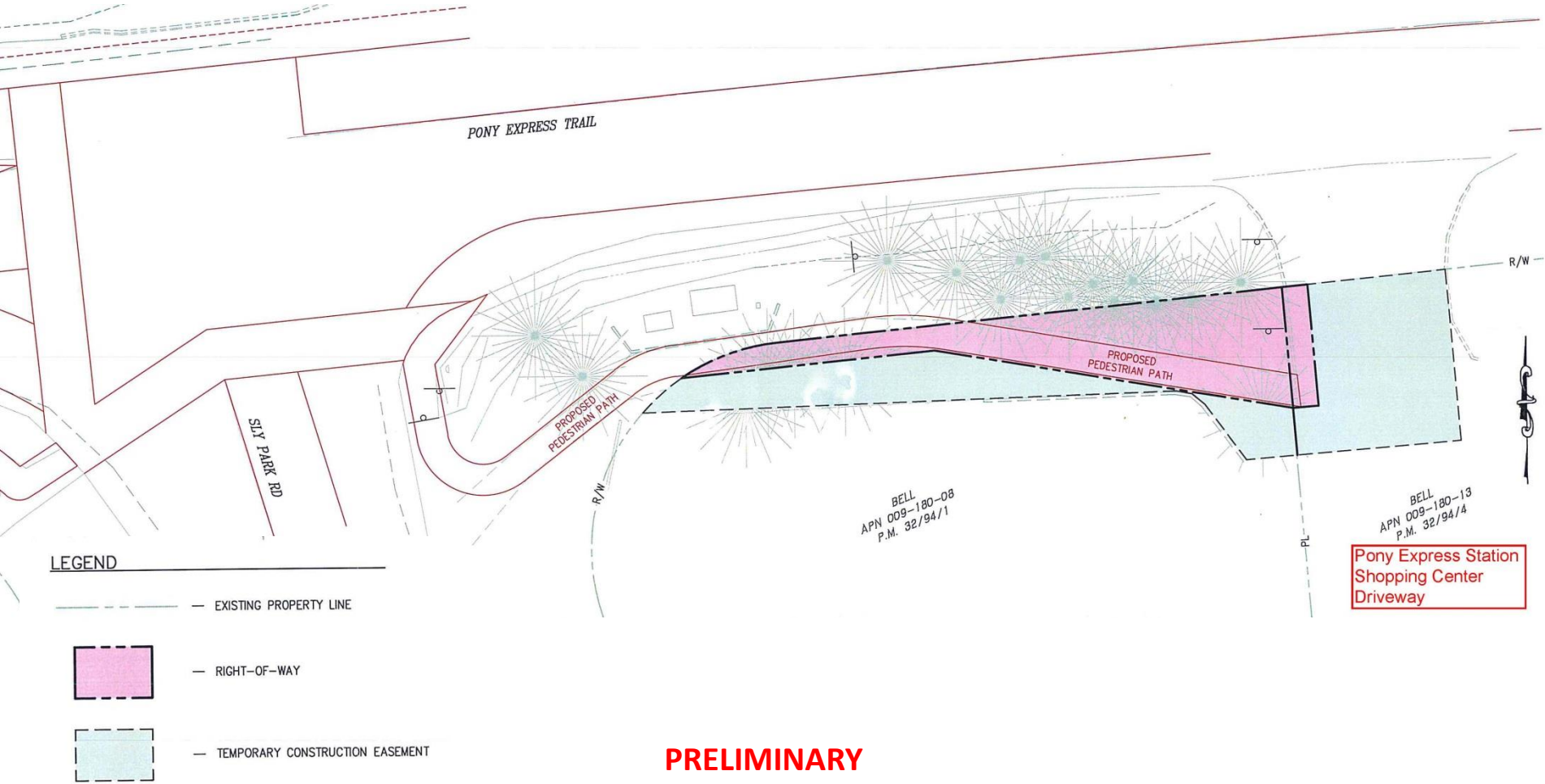




# Pony Express Trail Bicycle & Pedestrian Improvements

## Project Overview:

- ✓ Right of Way Phase in progress - Pony Express Station Shopping Center

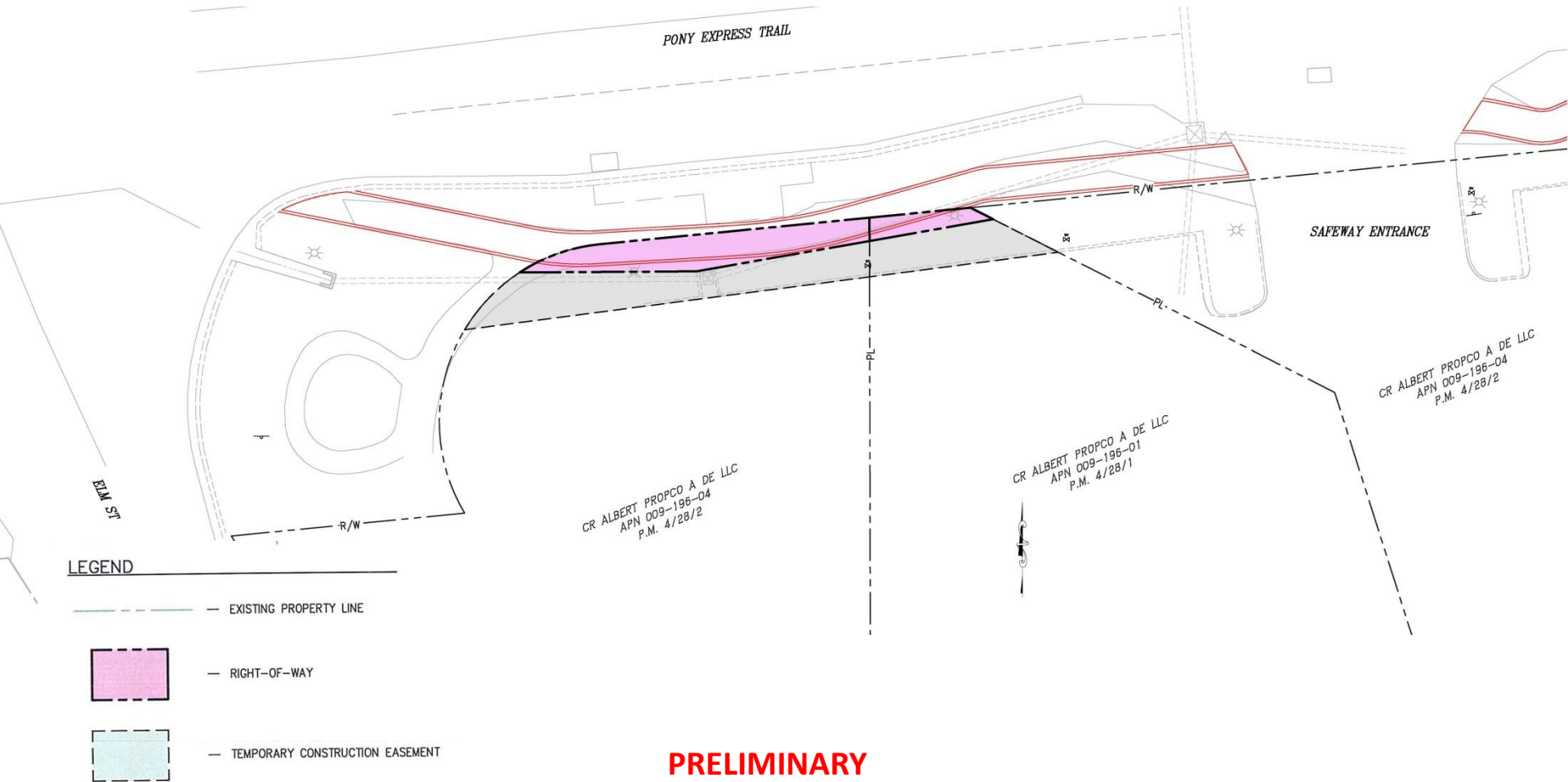




# Pony Express Trail Bicycle & Pedestrian Improvements

## Project Overview:

- ✓ Right of Way Phase in progress - Safeway

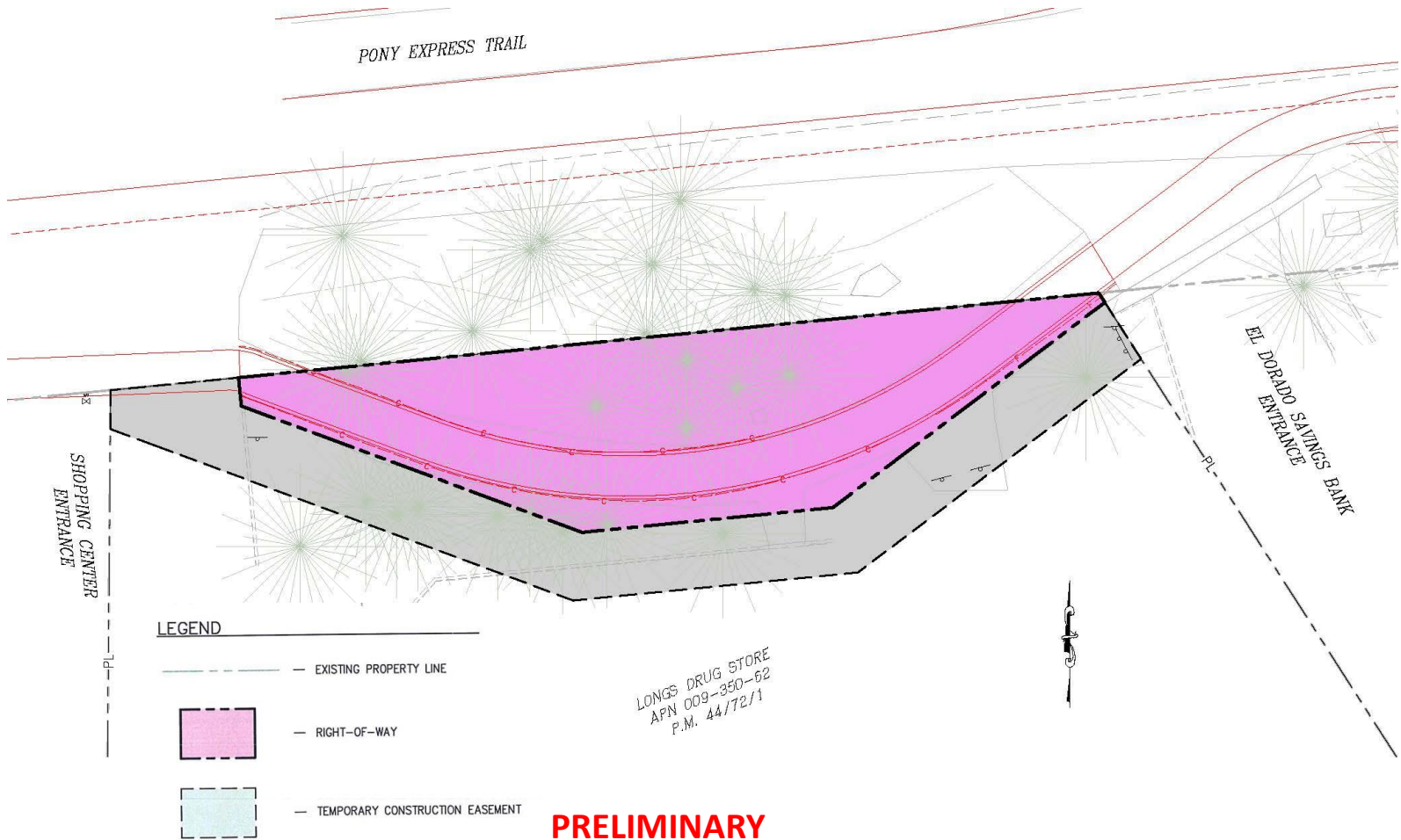




# Pony Express Trail Bicycle & Pedestrian Improvements

## Project Overview:

- ✓ Right of Way Phase in progress - CVS



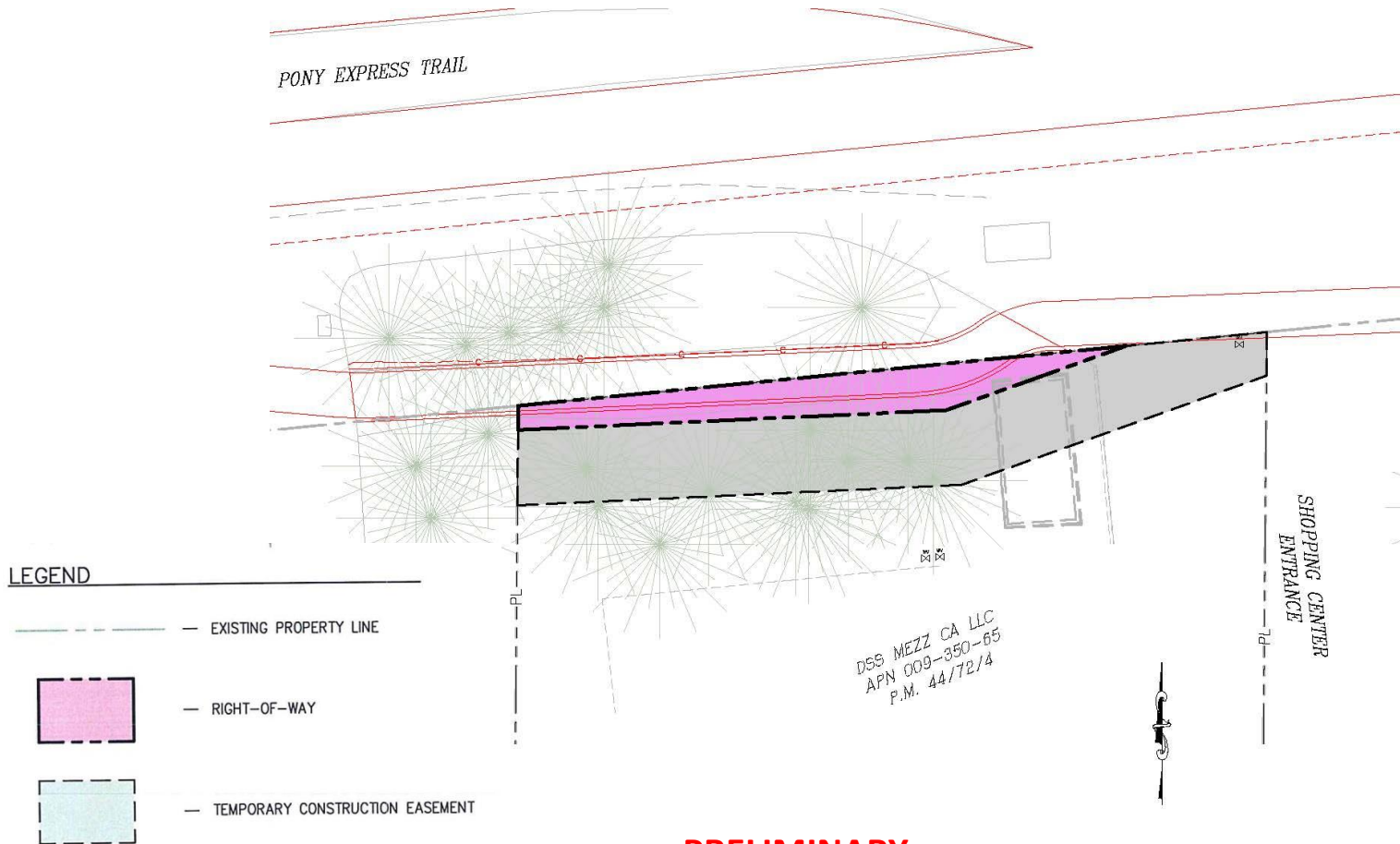




# Pony Express Trail Bicycle & Pedestrian Improvements

## Project Overview:

- ✓ Right of Way Phase in progress - O'Reilly's Auto Parts

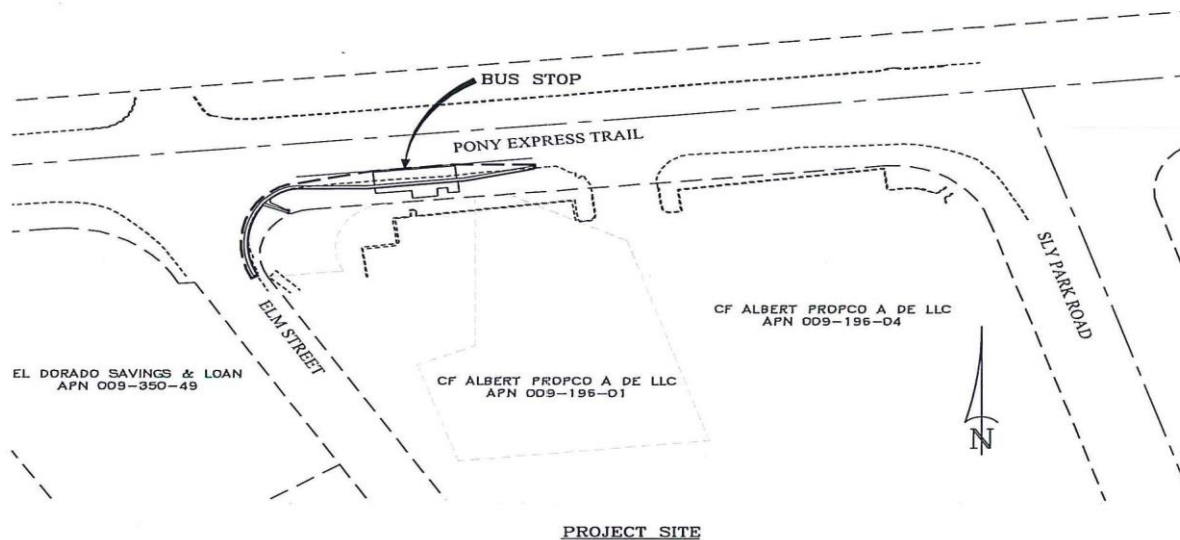




## Pony Express Trail Bicycle & Pedestrian Improvements

### Project Overview:

- ✓ Improvements to Drainage, Pedestrian Paths / Sidewalk, Mid-Block Cross Walks, and Safer Passage for Pedestrians and Bikes
- ✓ Overlap with El Dorado County Transit Improvements at Pony Express Trail Bus Stop (at Safeway) Completed 2020 Construction Season
- ✓ Class 2 Bike Lane Striping on Both Sides of Pony Express Trail from Sly Park Road to Sanders Drive will be Completed this Season with County Road Repair and Chip Seal Project in Progress





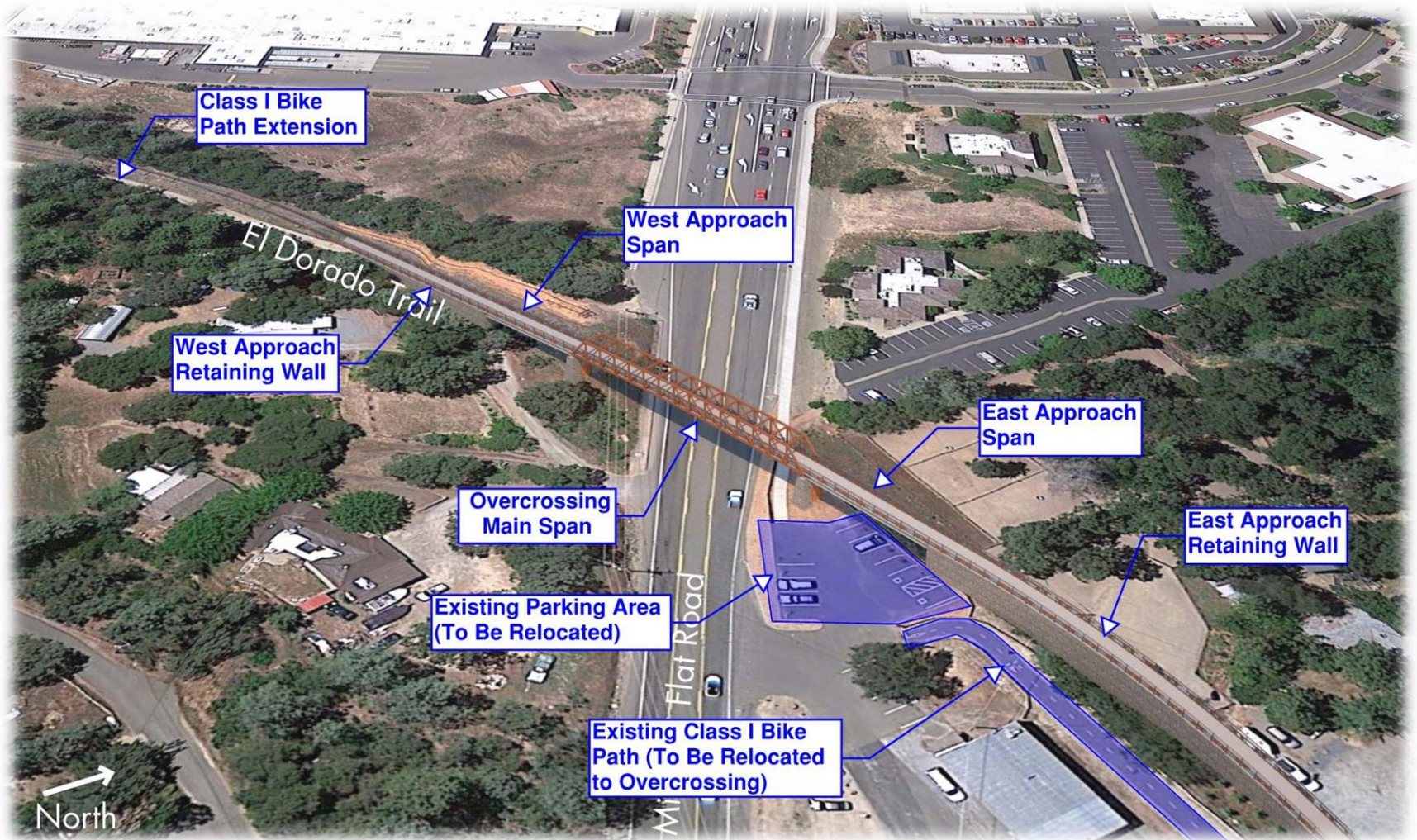
## Pony Express Trail Bicycle & Pedestrian Improvements

### Approx. Project Look Ahead Schedule:

- ✓ Planning & Environmental – 2019 – CEQA completed Notice of Exemption and filed 8/28/19 / NEPA completed Categorical Exclusion 10/29/19 – Planning & Environmental phase complete
- ✓ Right- of- Way (ROW) - 2019 - 2021
- ✓ Design - 2019 – 2021
- ✓ Construction - TBD ?
- ✓ Currently pursuing construction grant opportunities through State Active Transportation Program



## Missouri Flat Road Pedestrian Overcrossing

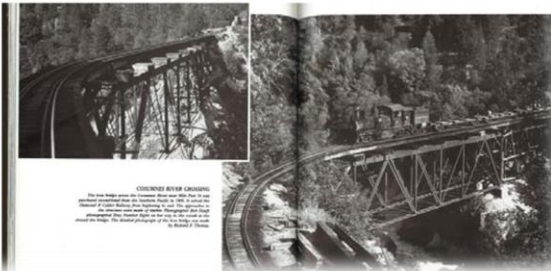
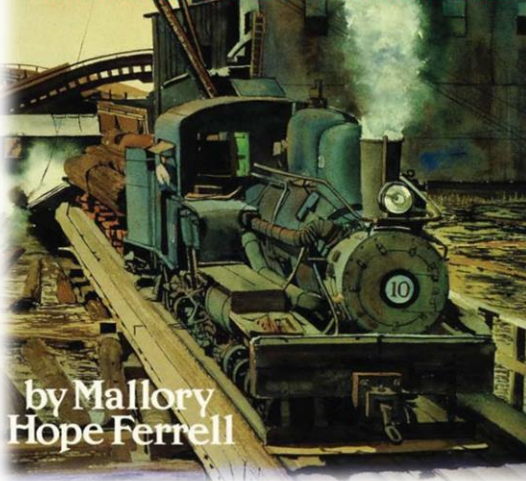




## Missouri Flat Road Pedestrian Overcrossing

**Truss Bridge:  
Reflecting  
Railroad  
History**

**EL DORADO**  
**NARROW GAUGE**  
THE DIAMOND & CALDOR RAILWAY



**Narrow Gauge Shay Locomotive  
(Diamond & Caldor Railway, circa 1936)**



# Missouri Flat Road Pedestrian Overcrossing





## Missouri Flat Road Pedestrian Overcrossing





## Missouri Flat Road Pedestrian Overcrossing



**Wall Finish  
Treatment**

**Stacked Rock & Concrete Pier**





## Missouri Flat Road Pedestrian Overcrossing

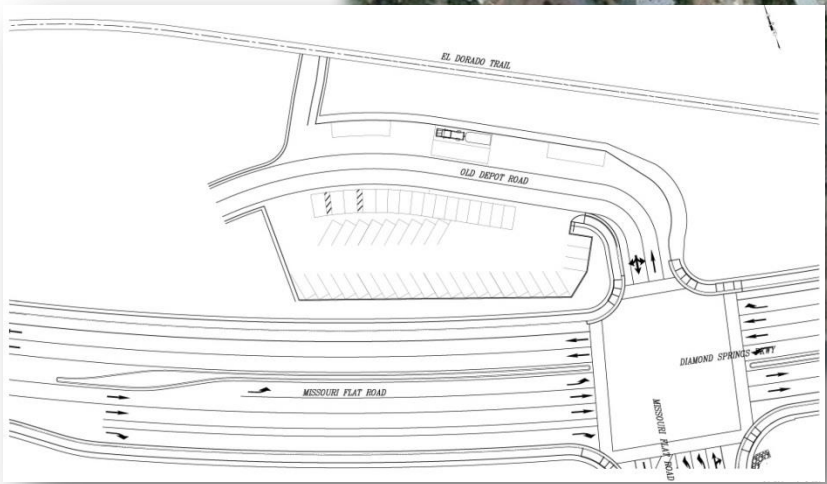
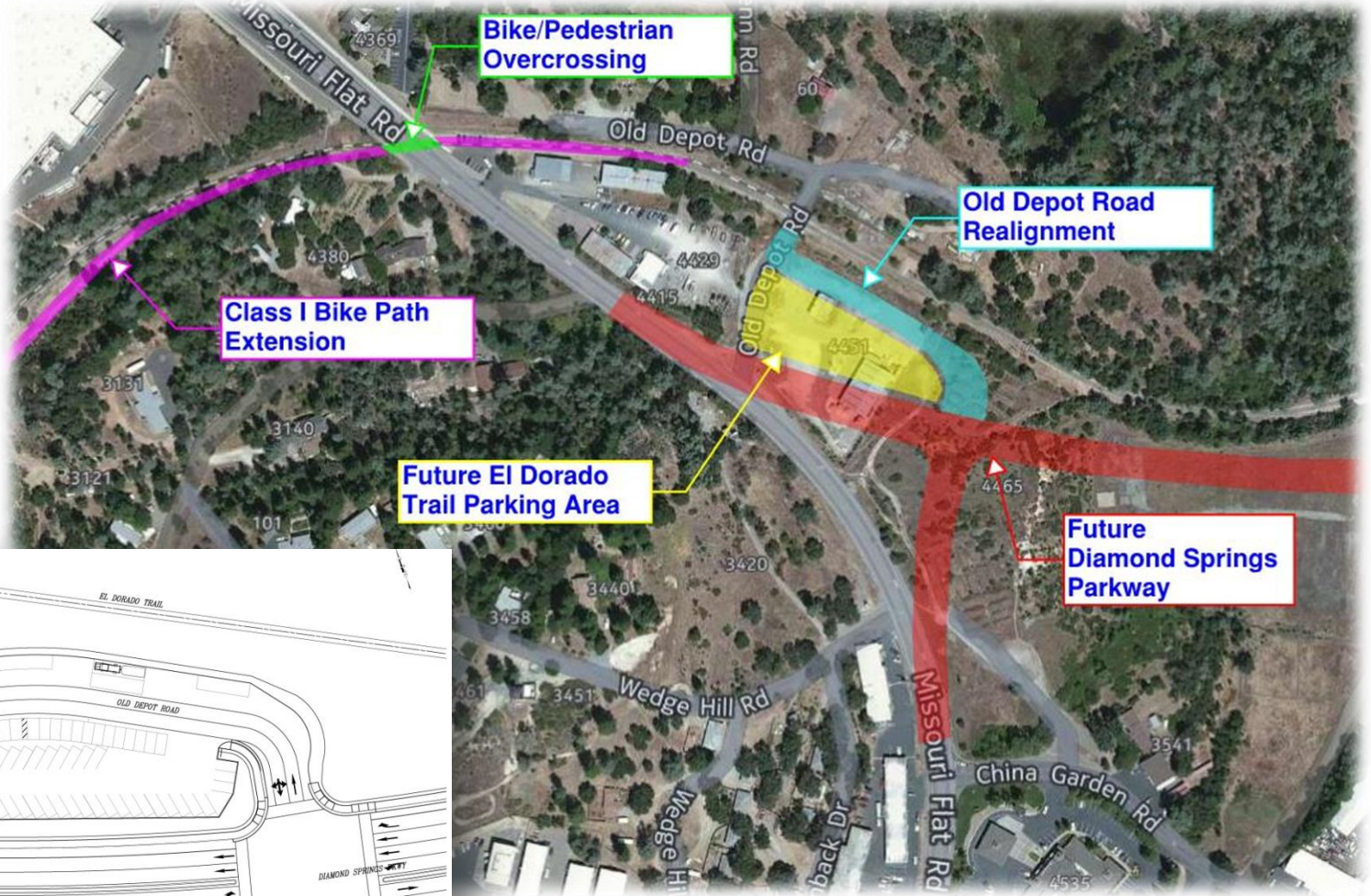
Low-Profile Path Lighting Example





# Missouri Flat Road Pedestrian Overcrossing

**New  
Parking Area**





## Missouri Flat Road Pedestrian Overcrossing

### Project Schedule

Utility Relocations

Fall 2020

Design Complete

Spring 2021

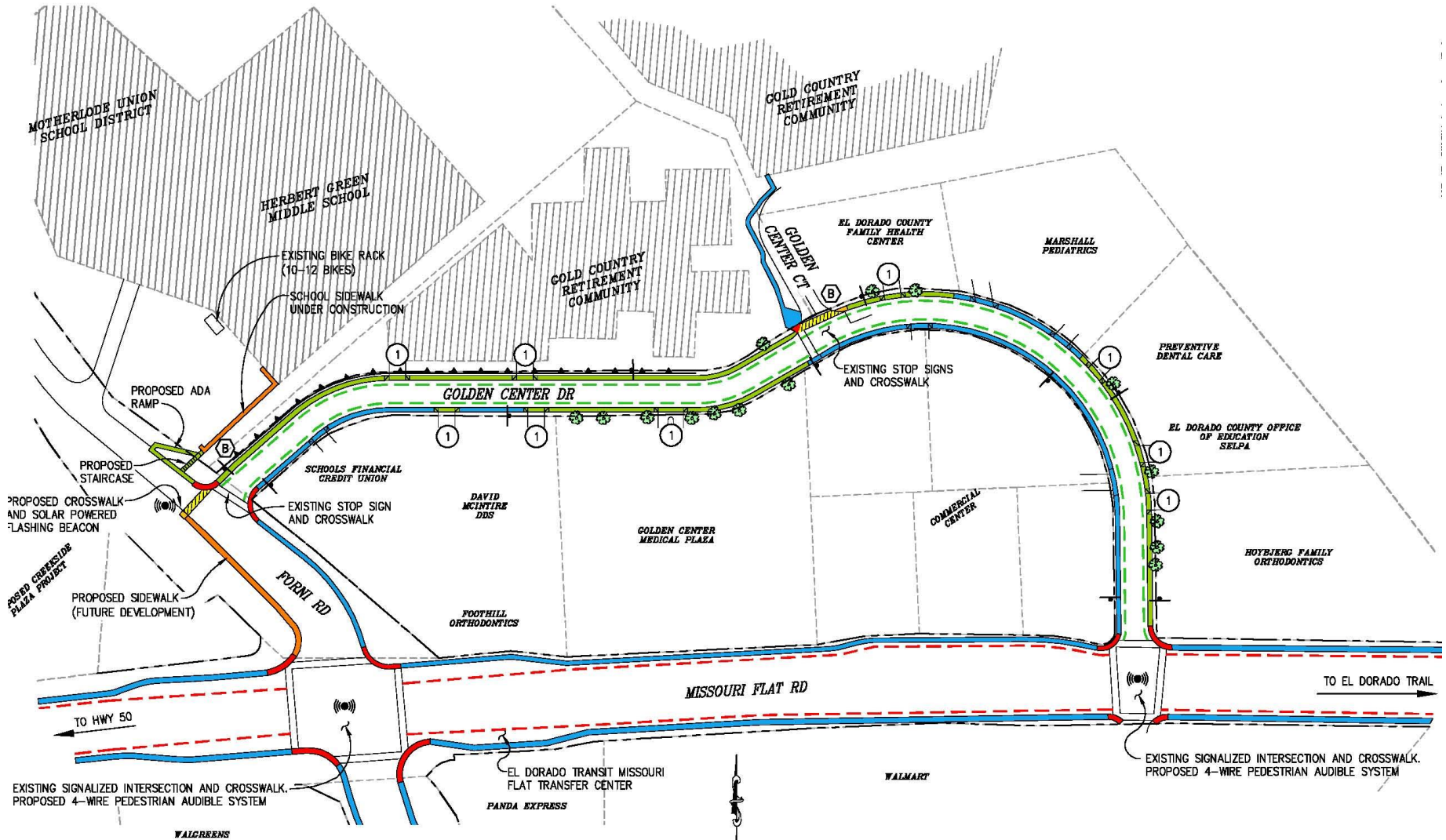
Begin Construction

Spring 2022? (TBD)

- Currently pursuing construction grant opportunities through State Active Transportation Program



# Golden Center Drive Proposed Improvements





## AGENDA

↳ Welcome / Introductions

## PROJECT UPDATES

↳ Bicycle Plan Overview

↳ Ponderosa Road

↳ Pony Express Trail

↳ Missouri Flat Road

Pedestrian Overcrossing

## OPEN DISCUSSION

↳ Open Discussion





## Questions

What concerns does the community have that could be addressed by the proposed projects?



<https://www.edcgov.us/Government/dot/projects>

[https://www.edcgov.us/Government/Parks/Pages/el\\_dorado\\_trail.aspx](https://www.edcgov.us/Government/Parks/Pages/el_dorado_trail.aspx)

<https://www.edctc.org>

Contact Us at: [dotengineering@edcgov.us](mailto:dotengineering@edcgov.us)