

Rubicon Trail Site Assessment

December 3, 2012

Crew: Rick Hammonds, Byron Saylor & Mike Overmeyer

Weather Conditions: The weather conditions for the Rubicon Trail were overcast cool with patches of snow in spots along the trail. The summary of weather conditions up to this day are as followed:

2012		29-Nov	30-Nov	1-Dec	2-Dec	3-Dec	4-Dec	5-Dec	6-Dec	7-Dec
GT	Precip (in)	0.54	2.14	1.41	2.32	0.01	0.22	1.08	0.01	0.01
	Avg Temp (F)	49	49	49	47	47	48	0	48	49
SLT	Precip (in)	0.01	2.2	0.27	1.81	T	0.1	0.92	0	0
	Avg Temp (F)	46	40	44	38	41	46	42	40	39
R2	Snow Depth (in)	6	6	10	9	12	12	10	9	9
	Avg Temp (F)	38	38	35	37	34	35	40	39	36

Reference Loon Lake Elevation: ~6,500 ft

GT = Georgetown; elevation: 2,880 ft

<http://classic.wunderground.com/cgi-bin/findweather/getForecast?query=95634>

SLT= South Lake Tahoe; elevation: 6,623 ft

<http://classic.wunderground.com/cgi-bin/findweather/getForecast?query=38.89361191,-119.99527740&MR=1>

R2 – Rubicon#2 Snotel Site; elevation: 7,689 ft

<http://www.wcc.nrcs.usda.gov/nwcc/site?sitenum=724&state=ca>

Trail Sections (Areas in grey not observed):

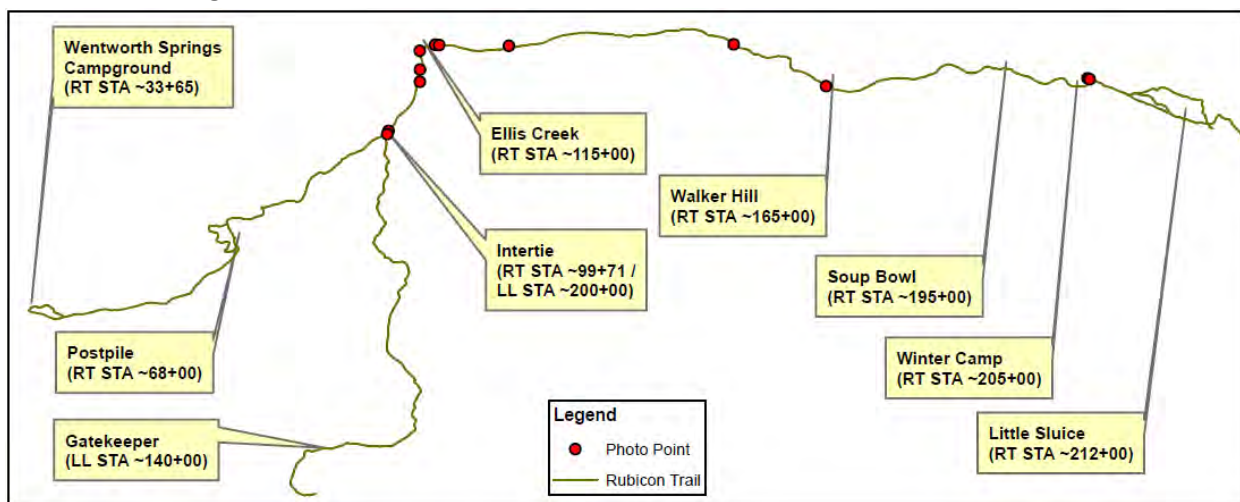
Wentworth Springs Campground / Post Pile Grade /

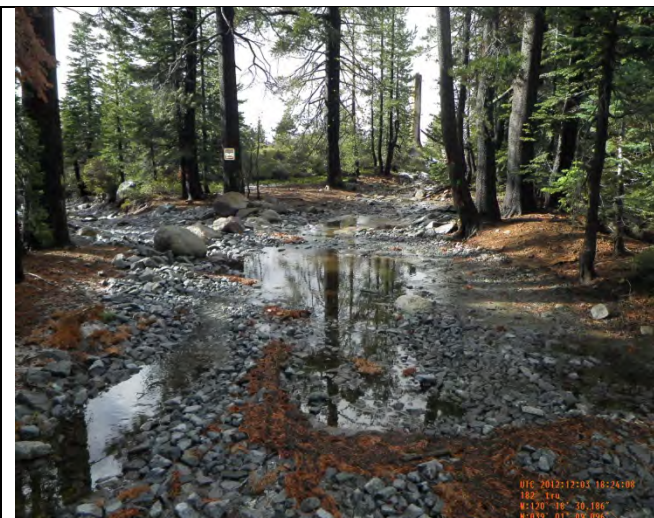
Gate Keeper / Ellis Creek Tie Intersection / Walker Hill / Soup Bowl / Winter Camp / Little Sluice Area

Trail Conditions / Observations: Entered the Trail from Loon Lake entrance. Traveled from Loon Lake to Winter Camp. There were no vehicles that were seen on the trail over the course of the day. The BMP's that were investigated were functioning as designed, capturing runoff from the trail and retaining sediment.

County Assessment: As of this site visit for the conditions observed, the County has determined that the goals of the Saturated Soil Water Quality Protection Plan (SSWQPP) are being met and that the BMP's are generally effective. The minimal flows observed on the trail were being captured by the Trail BMP's with no outfall erosion issues. Observed water levels were low enough to not pose a risk of washing contaminants from the under carriage of vehicles.

Photo Monitoring:





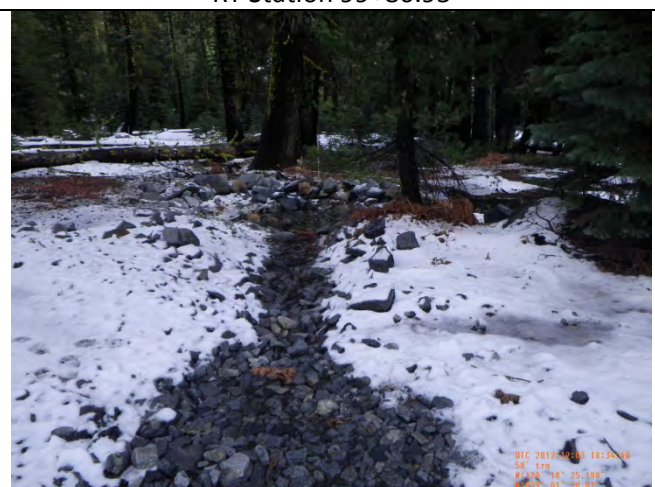
Rock Fill
RT Station 99+51.63



Rock Energy Dissipater
RT Station 99+86.95



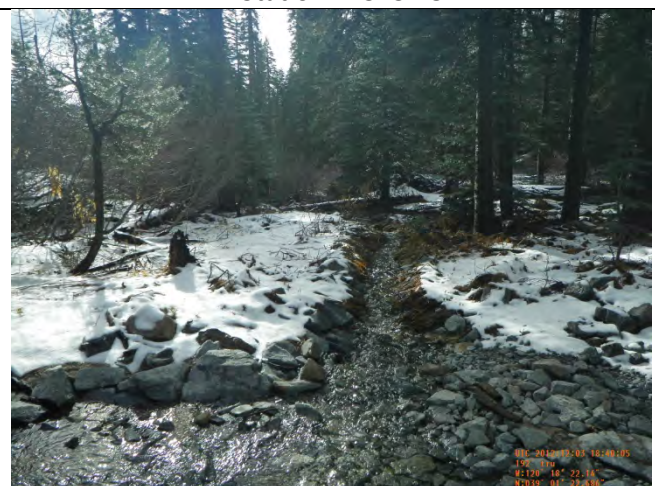
Rock Energy Dissipater
RT Station 110+08.97



Rock Lined Channel
RT Station 113+37.87



Rock Line Channel
RT Station 116+95.91



Rock Line Channel
RT Station 116+95.91



Rock Energy Dissipater
RT Station 126+18.54



Log Bridge
RT 155+48



Rock Fill
RT Station 170+00



Rock Breast Wall
RT Station 209+58.39



Rock Fill
RT Station 209+58.39