



County of El Dorado

Chief Administrative Office

Parks Division

200 Armory Drive
Placerville, CA 95667-4197

Phone (530) 621-5360
Fax (530) 642-0301

Don Ashton, MPA
Chief Administrative Officer

DATE: January 25, 2023
TO: Whom it may concern
FROM: Vickie Sanders
SUBJECT: Rubicon Trail Inspection January 18, 2023

On January 18, 2023, Brian Bettencourt and Tim Canavarro attempted a site inspection for the Rubicon Trail. Staff attempted to access the trail from Ice House Road at Loon Lake. Unfortunately, staff could only make it in about one mile from the Loon Lake Chalet as they were sinking in 6' of soft snow. Photos attached below.



Coming back across the first dam.

Rubicon Trail Site Assessment

January 24, 2023

Crew: Brian Bettencourt and Tim Canavarro

Weather Conditions: The weather conditions for the Rubicon Trail were clear and cold. The air temperature on the trail was approximately 20(F) at 9:00 a.m. and 31(F) around 12:30 p.m. The summary of weather conditions up to this day are as follows:

		2022				
		20-Jan	21-Jan	22-Jan	23-Jan	24-Jan
SLT	Precip (in)	0.3	0	0	0.1	0
	Avg Temp (F)	16	18	18.4	22	22.1
R2	Snow Depth (i)	105	102	98	95	95
	Avg Temp (F)	26	22	20	30	23
LL	Precip (in)	0.24	0	0	0	0
	Low Temp(F)	16	14	20	15	17
	High Temp(F)	28	30	45	26	32
	Ave Temp(F)	21	21	31	21	25

Reference Loon Lake Elevation: ~6,500 ft

SLT= South Lake Tahoe; elevation: 6,623 ft <http://classic.wunderground.com/cgi-bin/findweather/getForecast?query=38.89361191,-119.99527740&MR=1>

R2 – Rubicon#2 Snotel Site; elevation: 7,689 ft <http://www.wcc.nrcs.usda.gov/nwcc/site?sitenum=724&state=ca>

LON –Loon Lake; elevation: 6,410 ft http://cdec.water.ca.gov/cgi-progs/stationInfo?station_id=LON

Trail Sections (Areas in grey not observed):

Wentworth Springs Campground / Post Pile Grade /

Ellis Creek Tie Intersection / Walker Hill / Soup Bowl / Winter Camp / Little Sluice Area

Trail Conditions / Observations: Staff entered the Rubicon Trail using the Loon Lake entrance to reach the Intertie. Snow conditions observed were estimated to be 4-6+ ft. deep in the area. Trail weather conditions were clear and cold in the morning, moderate in the afternoon. BMPs in the area traveled were covered in snow.

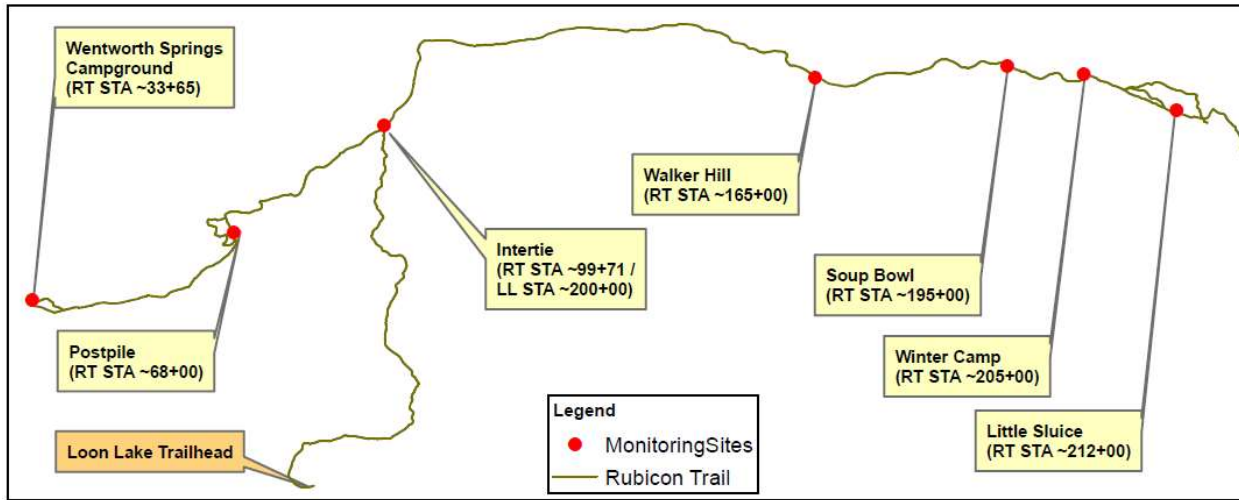
County Assessment: Conditions did not exist to warrant an inspection per the Monitoring Protocol. However, due to the current Trail closure, it was requested that staff get photos of the inspections sites and assess any damage from the recent atmospheric river events that hit the region beginning at the end of December 2022.

The snow was crisp in the morning making travel in the razor with tracks a bit easier. There were several locations that winching was required. Staff made it to the Intertie, and it was getting late in the day with snow conditions deteriorating and an issue with the snow tracks staff decided to try to make it out. The razor could not climb out of the bowl because of the steep grade and no winching points, so staff took a different line out of the bowl.

Staff will make repairs to the razor and if possible, will try for Thursday.

Rubicon Trail Site Assessment January 24, 2023

Photo Monitoring:



Wentworth Springs Campground
RT Station 33+65
Not Observed

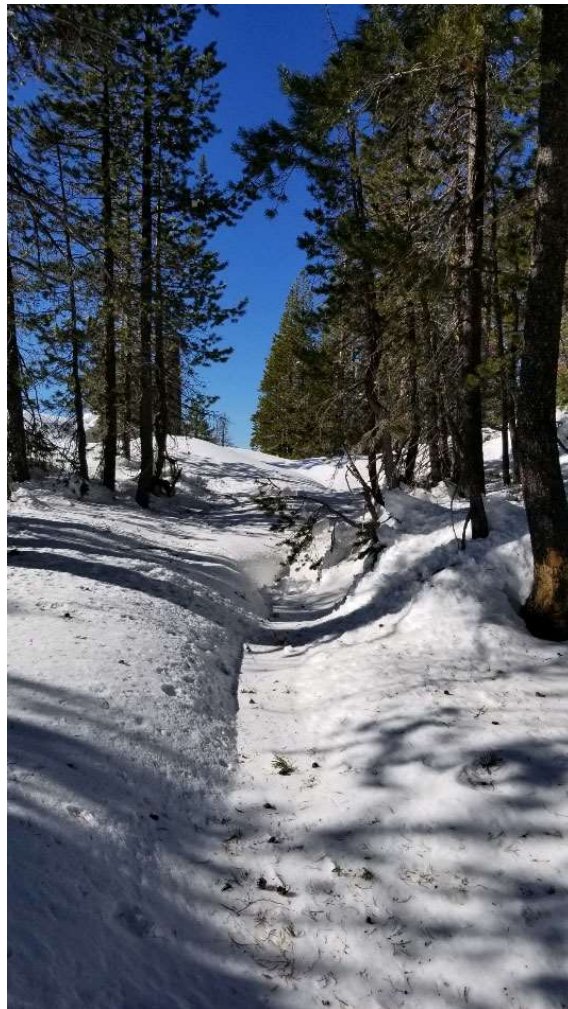
Post Pile
RT Station 68+00
Not Observed



Intertie
RT Station 115+00



**Rubicon Trail Site Assessment
January 24, 2023**



Inspectors estimate 5'-6' snow depth at this location. No visible water flowing at the site.

**Rubicon Trail Site Assessment
January 24, 2023**

Walker Hill
Rt Station 165+00
Not Observed

Soup Bowl
RT Station 195+00
Not Observed

Winter Camp
RT Station 205+00
Not Observed

Little Sluice
Rt Station 212+00
Not Observed

Rubicon Trail Site Assessment

January 27, 2023

Crew: Brian Bettencourt and Nicholas Howle

Weather Conditions: The weather conditions for the Rubicon Trail were clear and cold. The air temperature on the trail was approximately 29(F) at 7:00 a.m. and 39(F) around 12:30 p.m. The summary of weather conditions up to this day are as follows:

2022		23-Jan	24-Jan	25-Jan	26-Jan	27-Jan
SLT	Precip (in)	0.01	0	0	0	0
	Avg Temp (F)	22	22.1	23.8	24.1	21.8
R2	Snow Depth (i)	95	95	93	92	93
	Avg Temp (F)	30	23	24	32	31
LL	Precip (in)	0	0	0	0	0
	Low Temp(F)	15	17	29	27	25
	High Temp(F)	26	32	42	37	46
	Ave Temp(F)	21	25	35	32	34

Reference Loon Lake Elevation: ~6,500 ft

SLT= South Lake Tahoe; elevation: 6,623 ft <http://classic.wunderground.com/cgi-bin/findweather/getForecast?query=38.89361191,-119.99527740&MR=1>

R2 – Rubicon#2 Snotel Site; elevation: 7,689 ft <http://www.wcc.nrcs.usda.gov/nwcc/site?sitenum=724&state=ca>

LON –Loon Lake; elevation: 6,410 ft http://cdec.water.ca.gov/cgi-progs/stationInfo?station_id=LON

Trail Sections (Areas in grey not observed):

Wentworth Springs Campground / Post Pile Grade /

Ellis Creek Tie Intersection / Walker Hill / Soup Bowl / Winter Camp / Little Sluice Area

Trail Conditions / Observations: Staff entered the Rubicon Trail using the Airport Flats entrance towards Wentworth Springs Campground. Snow conditions observed were 4-8+ ft. deep in the area. Trail weather conditions were clear and cold. BMPs were covered in snow. Where visible, drainage appeared to be working as designed.

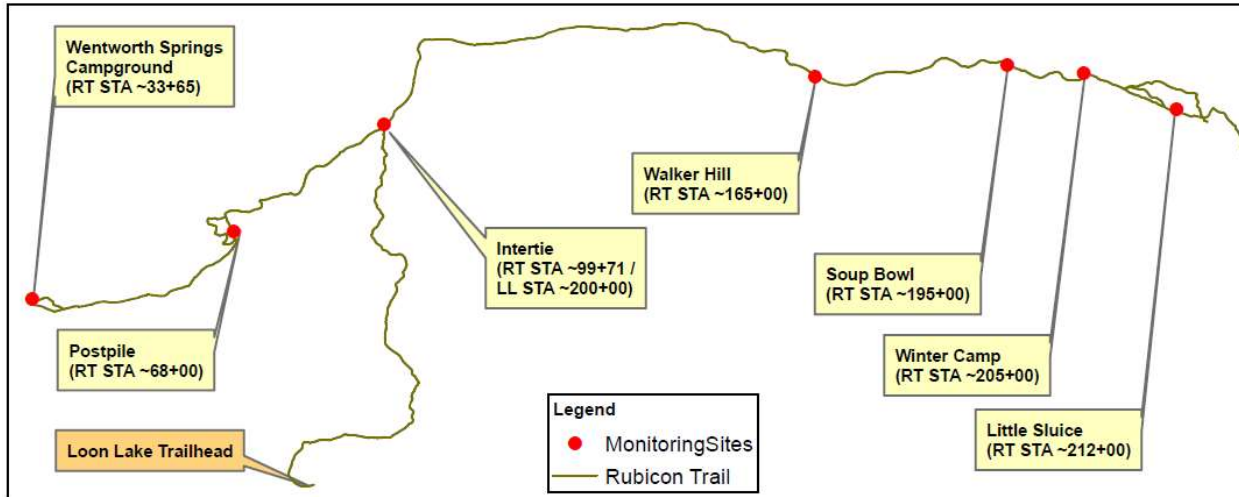
County Assessment:

The trail / road on the way into the Wentworth Springs was covered with very deep snow passable by tracked vehicle only. There were several trees across the road cleared by staff on the way in. The BMP's that were identifiable look to be performing properly with drainage as expected.

Rubicon Trail Site Assessment

January 27, 2023

Photo Monitoring:



**Rubicon Trail Site Assessment
January 27, 2023**

**Wentworth Springs Campground
RT Station 33+65
Not Observed**



Wentworth Springs Road



Wentworth Springs Road heading to the Campground

Rubicon Trail Site Assessment

April 19, 2023

Crew: Brian Bettencourt and Tim Canavarro

Weather Conditions: The weather conditions for the Rubicon Trail were beautiful. The air temperature on the trail was approximately 16(F) at 7:00 a.m. and 35(F) around 12:30 p.m. The summary of weather conditions up to this day are as follows:

		2023				
		15-April	16-April	17-April	18-April	19-April
SLT	Precip (in)	0	0	0	.07	0.02
	Avg Temp (F)	37.2	44.5	38.8	28.5	28.5
R2	Snow Depth (i)	123	123	121	120	120
	Avg Temp (F)	31	36	41	42	35
LL	Precip (in)	0	0	0	.42	0
	Low Temp(F)	51	47	41	31	38
	High Temp(F)	51	47	41	31	38
	Ave Temp(F)	39	41	34	23	25

Reference Loon Lake Elevation: ~6,500 ft

SLT= South Lake Tahoe; elevation: 6,623 ft <http://classic.wunderground.com/cgi-bin/findweather/getForecast?query=38.89361191,-119.99527740&MR=1>

R2 – Rubicon#2 Snotel Site; elevation: 7,689 ft <http://www.wcc.nrcs.usda.gov/nwcc/site?sitenum=724&state=ca>

LON –Loon Lake; elevation: 6,410 ft http://cdec.water.ca.gov/cgi-progs/stationInfo?station_id=LON

Trail Sections (Areas in grey not observed):

Wentworth Springs Campground / Post Pile Grade /

Ellis Creek Tie Intersection / Walker Hill / Soup Bowl / Winter Camp / Little Sluice Area

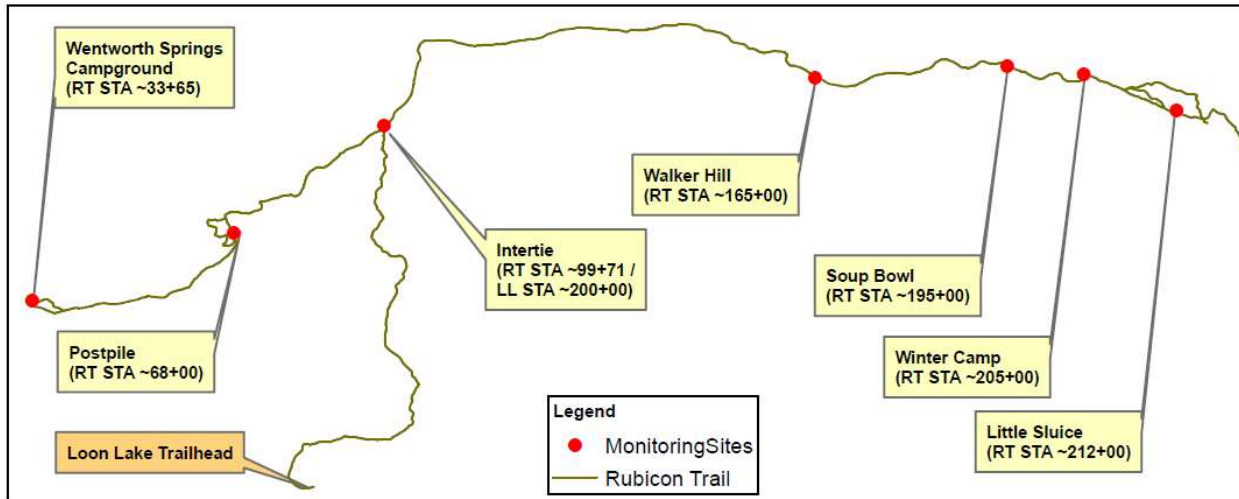
Trail Conditions / Observations: Staff entered the Rubicon Trail using the trail head at Loon Lake. Snow conditions observed were high to Ellis Creek. Snow depth was above average moving towards Ellis Creek. Trail conditions were sunny and cold. BMP’s were covered in deep snow, but what little was observed was functioning. Drainage appeared to be working as designed.

County Assessment: As of this site visit for the conditions observed, the County has determined that the goals of the Saturated Soil Water Quality Protection Plan (SSWQPP) are being met. Observed water levels were low enough to not pose a risk of washing contaminants from the under carriage of vehicles pursuant to the monitoring protocols. Out of the 7 inspection sites only 3 were inspected.

Report reviewed by U.S. Forest Service:
Reviewers: Vincent Pacific & Dionne Uzes

Rubicon Trail Site Assessment April 19, 2023

Photo Monitoring:



Wentworth Springs Campground

RT Station 33+65

Water Depths: 0.049, 0.0., 0.0



Notes: The trail is covered in deep snow. Shallow water was crossing the trail in a small observable area in the snow. Only able to take measurements in a small area due to minimal exposure, unable to get measurements 10' apart.

Rubicon Trail Site Assessment April 19, 2023

Post Pile

RT Station 68+00

Water Depths: 0.049, 0.0, 0.0



Notes: More than 5 feet of snow covering the area. Drainage point was functioning as seen from an exposed area in the snow. Only able to take one measurement due to minimal exposure.

Intertie

RT Station 115+00

Water Depths: 0.00', 0.00, 0.00



Notes: Intertie Completely covered in deep snow. No water flow observable.

**Rubicon Trail Site Assessment
April 19, 2023**

Walker Hill

RT Station 165+00

Water Depths: 0.00', 0.00', 0.00'

Notes: Area not observed.

Soup Bowl

RT Station 195+00

Water Depths: .0' .0' .0'

Notes: Area not observed.

Winter Camp

RT Station 205+00

Water Depths: .0' 0.0' 0.0'

Notes: Area not observed.

Little Sluice

RT Station 212+00

Water Depths: 0' 0' 0'

Notes: Area not observed.

Rubicon Trail Site Assessment

April 25, 2023

Crew: Brian Bettencourt and Nick Howle

Weather Conditions: The weather conditions for the Rubicon Trail were beautiful. The air temperature on the trail was approximately 41(F) at 7:00 a.m. and 54(F) around 12:30 p.m. The summary of weather conditions up to this day are as follows:

2023		21-April	22-April	23-April	24-April	25-April
SLT	Precip (in)	0.0	0.0	0.0	0.0	0.0
	Avg Temp (F)	41.5	42.8	43.5	43.7	42.1
R2	Snow Depth (i)	120	119	117	116	115
	Avg Temp (F)	29	28	44	44	44
LL	Precip (in)	0	0	0	.01	0
	Low Temp(F)	33	39	44	34	33
	High Temp(F)	55	44	44	52	53
	Ave Temp(F)	46	42	44	43	44

Reference Loon Lake Elevation: ~6,500 ft

SLT= South Lake Tahoe; elevation: 6,623 ft <http://classic.wunderground.com/cgi-bin/findweather/getForecast?query=38.89361191,-119.99527740&MR=1>

R2 – Rubicon#2 Snotel Site; elevation: 7,689 ft <http://www.wcc.nrcs.usda.gov/nwcc/site?sitenum=724&state=ca>

LON –Loon Lake; elevation: 6,410 ft http://cdec.water.ca.gov/cgi-progs/stationInfo?station_id=LON

Trail Sections (Areas in grey not observed):

Wentworth Springs Campground / Post Pile Grade /

Ellis Creek Tie Intersection / Walker Hill / Soup Bowl / Winter Camp / Little Sluice Area

Trail Conditions / Observations: Staff entered the Rubicon Trail using the trail head at Loon Lake. Snow conditions observed were still high to Ellis Creek with some rocks and earth beginning to show. Trail conditions were mild with sunshine. BMP’s that could be observed were functioning. Drainage appeared to be working as designed. Travel became difficult by mid-morning due to the snow becoming slushy, preventing access to the other inspection locations.

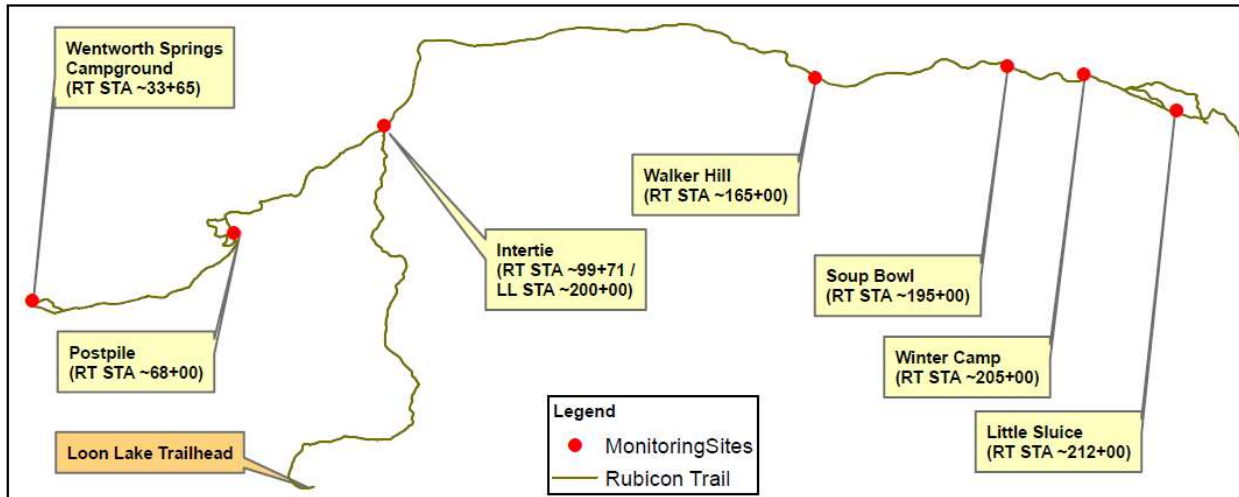
County Assessment: As of this site visit for the conditions observed, the County has determined that the goals of the Saturated Soil Water Quality Protection Plan (SSWQPP) are being met. Observed water levels were low enough to not pose a risk of washing contaminants from the under carriage of vehicles pursuant to the monitoring protocols. Out of the 7 inspection sites only 2 were inspected.

Report reviewed by U.S. Forest Service:

Reviewers: Vincent Pacific & Dionne Uzes

Rubicon Trail Site Assessment April 25, 2023

Photo Monitoring:



Wentworth Springs Campground

RT Station 33+65
Water Depths: 0.0

Notes: Not observed

Post Pile

RT Station 68+00
Water Depths: 0.0, 0.049, 0.5



Notes: Water flowing across the trail, BMP's functioning as designed.

**Rubicon Trail Site Assessment
April 25, 2023**

Intertie

RT Station 115+00

Water Depths: 0.00', 0.00, 0.00



Notes: Intertie Completely covered in deep snow. No water flow observable.

Walker Hill

RT Station 165+00

Water Depths: 0.00', 0.00', 0.00'

Notes: BMP's not observed

Notes: Area not observed.

Soup Bowl

RT Station 195+00

Water Depths: .0' .0' .0'

Notes: BMP's not observed

Notes: Area not observed.

Winter Camp

RT Station 205+00

Water Depths: .0' 0.0' 0.0'

Notes: BMP's Not observed

Notes: Area not observed.

**Rubicon Trail Site Assessment
April 25, 2023**

Little Sluice
RT Station 212+00
Water Depths: 0' 0' 0'

Notes: Area not observed.

Rubicon Trail Site Assessment

May 3, 2023

Crew: Brian Bettencourt and Nick Howle

Weather Conditions: The weather conditions for the Rubicon Trail were cloudy. The air temperature on the trail was approximately 29(F) at 7:00 a.m. and about 40(F) around 9:30 p.m. The summary of weather conditions up to this day are as follows:

2023		29-April	30-April	1-May	2-May	3-May
SLT	Precip (in)	0.0	0.0	0.0	0.16	0.0
	Avg Temp (F)	51.5	50.6	43.5	33.7	33.5
R2	Snow Depth (i)	108	105	103	100	101
	Avg Temp (F)	51	53	54	49	40
LL	Precip (in)	0.0	0.0	0.03	0.36	0
	Low Temp(F)	41	39	27	24	n/a
	High Temp(F)	65	57	44	34	n/a
	Ave Temp(F)	55	48	36	29	n/a

Reference Loon Lake Elevation: ~6,500 ft

SLT= South Lake Tahoe; elevation: 6,623 ft <http://classic.wunderground.com/cgi-bin/findweather/getForecast?query=38.89361191,-119.99527740&MR=1>

R2 – Rubicon#2 Snotel Site; elevation: 7,689 ft <http://www.wcc.nrcs.usda.gov/nwcc/site?sitenum=724&state=ca>

LON –Loon Lake; elevation: 6,410 ft http://cdec.water.ca.gov/cgi-progs/stationInfo?station_id=LON

Trail Sections (Areas in grey not observed):

Wentworth Springs Campground / Post Pile Grade /

Ellis Creek Tie Intersection / Walker Hill / Soup Bowl / Winter Camp / Little Sluice Area

Trail Conditions / Observations: Staff entered the Rubicon Trail using the trail head at Loon Lake. Snow levels continue to be high but beginning to melt with large drifts. Trail conditions were cloudy and large areas still covered. BMP’s that could be observed were functioning. Drainage appeared to be working as designed. Travel was good in the morning. Access to other inspection sites not possible due to deep snow still.

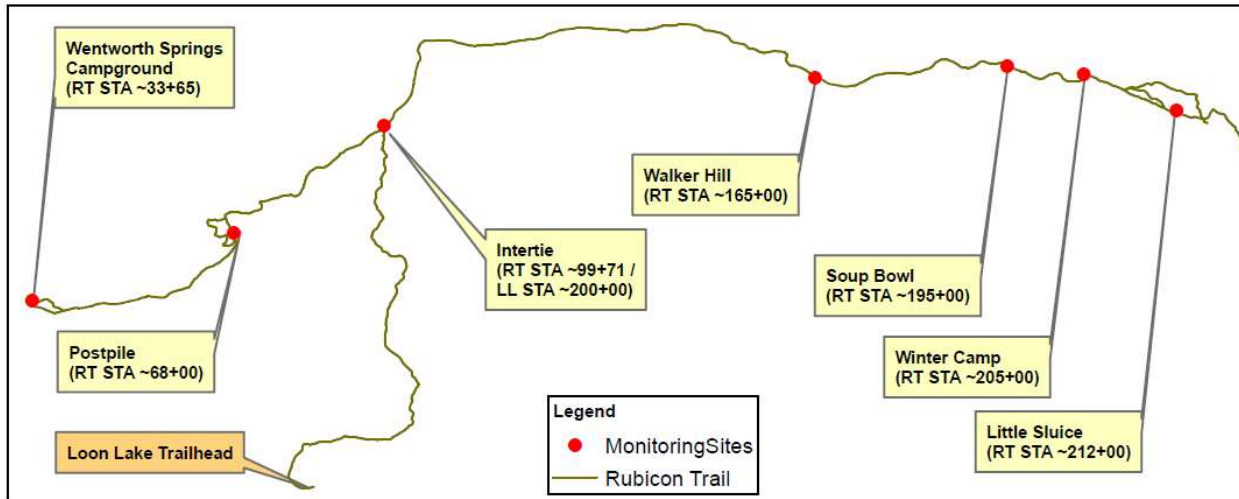
County Assessment: As of this site visit for the conditions observed, the County has determined that the goals of the Saturated Soil Water Quality Protection Plan (SSWQPP) are being met. Observed water levels were low enough to not pose a risk of washing contaminants from the under carriage of vehicles pursuant to the monitoring protocols. Out of the 7 inspection sites only 2 were inspected.

Report reviewed by U.S. Forest Service:

Reviewers: Vincent Pacific & Dionne Uzes

Rubicon Trail Site Assessment May 3, 2023

Photo Monitoring:



Wentworth Springs Campground

RT Station 33+65

Water Depths: 0.0, 0.0, 0.0

Notes: Not observed

**Rubicon Trail Site Assessment
May 3, 2023**

Post Pile

RT Station 68+00

Water Depths: 0.2, 0.4, 0.6



Notes: Water flowing across the trail, BMP's functioning as designed.

Rubicon Trail Site Assessment May 3, 2023

Intertie

RT Station 115+00

Water Depths: 0.00', 0.00, 0.00



Notes: Intertie Completely covered in deep snow. No water flow observable.

Walker Hill

RT Station 165+00

Water Depths: 0.00', 0.00', 0.00'

Notes: BMP's not observed

Notes: Area not observed.

Soup Bowl

RT Station 195+00

Water Depths: .0' .0' .0'

Notes: BMP's not observed

Notes: Area not observed.

Winter Camp

RT Station 205+00

Water Depths: .0' 0.0' 0.0'

Notes: BMP's Not observed

**Rubicon Trail Site Assessment
May 3, 2023**

Notes: Area not observed.

Little Sluice
RT Station 212+00
Water Depths: 0' 0' 0'

Notes: Area not observed.

Rubicon Trail Site Assessment

May 9, 2023

Crew: Brian Bettencourt and Nick Howle

Weather Conditions: The weather conditions for the Rubicon Trail were cloudy. The air temperature on the trail was approximately 29(F) at 7:00 a.m. and about 40(F) around 10:00 p.m. The summary of weather conditions up to this day are as follows:

		2023				
		5-May	6-May	7-May	8-May	9-May
SLT	Precip (in)	0.12	0.02	0.09	0.0	0.02
	Avg Temp (F)	36.9	35.2	38.3	41.5	38.5
R2	Snow Depth (i)	102	101	103	108	106
	Avg Temp (F)	32	33	32	32	34
LL	Precip (in)	0.42	0.74	0.08	0.00	0.14
	Low Temp(F)	28	27	28	32	25
	High Temp(F)	32	32	38	39	49
	Ave Temp(F)	29	29	33	34	36

Reference Loon Lake Elevation: ~6,500 ft

SLT= South Lake Tahoe; elevation: 6,623 ft <http://classic.wunderground.com/cgi-bin/findweather/getForecast?query=38.89361191,-119.99527740&MR=1>

R2 – Rubicon#2 Snotel Site; elevation: 7,689 ft <http://www.wcc.nrcs.usda.gov/nwcc/site?sitenum=724&state=ca>

LON –Loon Lake; elevation: 6,410 ft http://cdec.water.ca.gov/cgi-progs/stationInfo?station_id=LON

Trail Sections (Areas in grey not observed):

Wentworth Springs Campground / Post Pile Grade /

Ellis Creek Tie Intersection / Walker Hill / Soup Bowl / Winter Camp / Little Sluice Area

Trail Conditions / Observations: Staff entered the Rubicon Trail using the trail head at Loon Lake. Colder temps minimized snow melt. Trail conditions observed were of large areas still covered in snow. The weather was clear and sunny. BMP’s that could be observed were functioning. Drainage appeared to be working as designed. Travel was good in the morning. Access to other inspection sites not possible due to presence of deep snow.

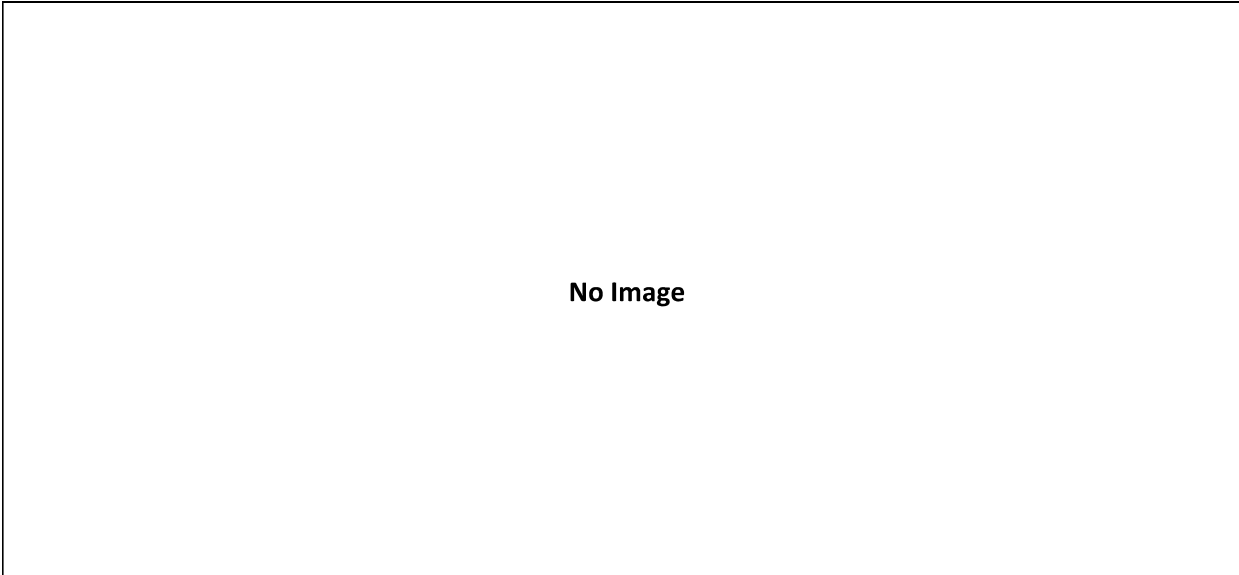
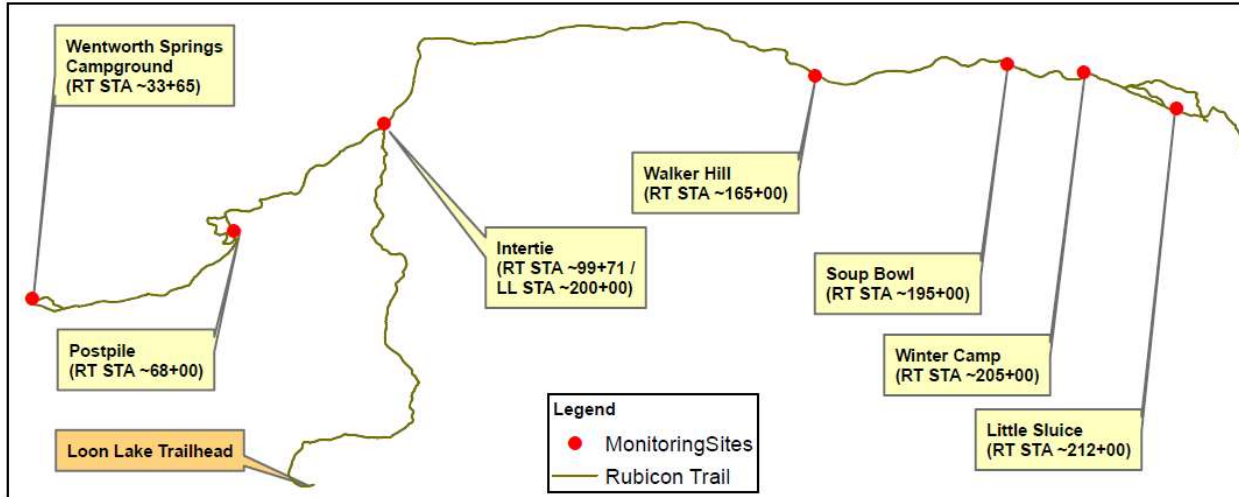
County Assessment: As of this site visit for the conditions observed, the County has determined that the goals of the Saturated Soil Water Quality Protection Plan (SSWQPP) are being met. Observed water levels were low enough to not pose a risk of washing contaminants from the under carriage of vehicles pursuant to the monitoring protocols. Out of the 7 inspection sites only 2 were inspected.

Report reviewed by U.S. Forest Service:

Reviewers: Vincent Pacific & Dionne Uzes

Rubicon Trail Site Assessment May 9, 2023

Photo Monitoring:



Wentworth Springs Campground			
RT Station 33+65			
Water Depths:	N/A	N/A	N/A
Notes:	Not Observed		

**Rubicon Trail Site Assessment
May 9, 2023**



Post Pile

RT Station 68+00

Water Depths:	0.5'	0.4'	0.5'
Notes:	More exposed area. Measured in 3 locations, 10' apart.		



Intertie

RT Station 115+00

Water Depths:	N/A	N/A	N/A
Notes:	Snow melting slowly. Intertie still covered in snow.		

**Rubicon Trail Site Assessment
May 9, 2023**

No Image			
Walker Hill			
RT Station 165+00			
Water Depths:	N/A	N/A	N/A
Notes:	Not Observed		

No Image			
Soup Bowl			
RT Station 195+00			
Water Depths:	N/A	N/A	N/A
Notes:	Not Observed		

**Rubicon Trail Site Assessment
May 9, 2023**

No Image			
Winter Camp			
RT Station 205+00			
Water Depths:	N/A	N/A	N/A
Notes:	Not Observed		

No Image			
Little Sluice			
RT Station 212+00			
Water Depths:	N/A	N/A	N/A
Notes:	Not Observed		

Rubicon Trail Site Assessment May 16, 2023

Crew: Brian Bettencourt and Nick Howle

Weather Conditions: The weather conditions for the Rubicon Trail were clear. The air temperature on the trail was approximately 49(F) at 7:00 a.m. and about 72(F) around 10:30 a.m. The summary of weather conditions up to this day are as follows:

2023		12-May	13-May	14-May	15-May	16-May
SLT	Precip (in)	0	0	0	0.18	0
	Avg Temp (F)	50.2	52.3	46.6	42.7	52.4
R2	Snow Depth (i)	102	100	98	96	94
	Avg Temp (F)	39	44	49	51	47
LL	Precip (in)	0	0	0.30	0	0
	Low Temp(F)	43	42	41	39	40
	High Temp(F)	60	61	62	62	65
	Ave Temp(F)	50	51	50	51	53

Reference Loon Lake Elevation: ~6,500 ft

SLT= South Lake Tahoe; elevation: 6,623 ft <http://classic.wunderground.com/cgi-bin/findweather/getForecast?query=38.89361191,-119.99527740&MR=1>

R2 – Rubicon#2 Snotel Site; elevation: 7,689 ft <http://www.wcc.nrcs.usda.gov/nwcc/site?sitenum=724&state=ca>

LON –Loon Lake; elevation: 6,410 ft http://cdec.water.ca.gov/cgi-progs/stationInfo?station_id=LON

Trail Sections (Areas in grey not observed):

Wentworth Springs Campground / Post Pile Grade /

Ellis Creek Tie Intersection / Walker Hill / Soup Bowl / Winter Camp / Little Sluice Area

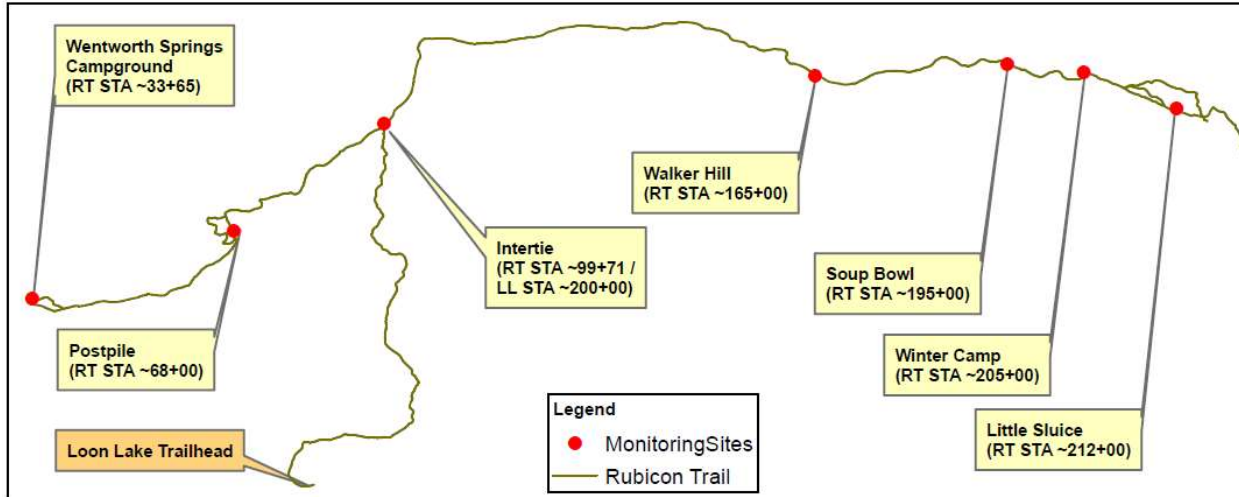
Trail Conditions / Observations: Staff entered the Rubicon Trail using the trail head at Loon Lake. Warmer temps have accelerated snow melt. Trail conditions were still a lot of snow pack however granite areas appearing in exposed areas (slabs). The weather was clear and sunny. BMP’s that could be observed were functioning. Drainage appeared to be working as designed. Travel was good in the morning. Access to other inspection sites not possible due to there is still deep snow beyond Ellis creek (Bridge not passable) for safety reasons.

County Assessment: As of this site visit for the conditions observed, the County has determined that the goals of the Saturated Soil Water Quality Protection Plan (SSWQPP) are being met. Observed water levels were low enough to not pose a risk of washing contaminants from the under carriage of vehicles pursuant to the monitoring protocols. Out of the 7 inspection sites only 2 were inspected.

Report reviewed by U.S. Forest Service:
Reviewers: Vincent Pacific & Dionne Uzes


Rubicon Trail Site Assessment May 16, 2023

Photo Monitoring:



**Rubicon Trail Site Assessment
May 16, 2023**

No Image			
Wentworth Springs Campground			
RT Station 33+65			
Water Depths:	N/A	N/A	N/A
Notes:	Not Observed		

				
Post Pile				
RT Station 68+00				
Water Depths:	0.6'	0.5'	0.6'	
Notes:	Mostly rid of snow with water flowing across and off trail as designed.			

**Rubicon Trail Site Assessment
May 16, 2023**



Intertie

RT Station 115+00

Water Depths:	0.2'	0.2'	0.0'
Notes:	Melt increasing from previous trips with BMP's becoming visible		

No Image

Walker Hill

RT Station 165+00

Water Depths:	N/A	N/A	N/A
Notes:	Not Observed		

**Rubicon Trail Site Assessment
May 16, 2023**

No Image			
Soup Bowl			
RT Station 195+00			
Water Depths:	N/A	N/A	N/A
Notes:	Not Observed		

No Image			
Winter Camp			
RT Station 205+00			
Water Depths:	N/A	N/A	N/A
Notes:	Not Observed		

No Image			
Little Sluice			
RT Station 212+00			
Water Depths:	N/A	N/A	N/A
Notes:	Not Observed		

**Rubicon Trail Site Assessment
May 16, 2023**

No Image			
Walker Hill			
RT Station 165+00			
Water Depths:	N/A	N/A	N/A
Notes:	Not Observed		

No Image			
Soup Bowl			
RT Station 195+00			
Water Depths:	N/A	N/A	N/A
Notes:	Not Observed		

No Image			
Winter Camp			
RT Station 205+00			
Water Depths:	N/A	N/A	N/A
Notes:	Not Observed		

**Rubicon Trail Site Assessment
May 16, 2023**

No Image			
Little Sluice			
RT Station 212+00			
Water Depths:	N/A	N/A	N/A
Notes:	Not Observed		

Rubicon Trail Site Assessment

May 23, 2023

Crew: Brian Bettencourt and Nick Howle

Weather Conditions: The weather conditions for the Rubicon Trail were clear. The air temperature on the trail was approximately 42(F) at 7:00 a.m. and about 59(F) around 12:30 p.m. The summary of weather conditions up to this day are as follows:

2023		19-May	20-May	21-May	22-May	23-May
SLT	Precip (in)	0	0	0	0	0
	Avg Temp (F)	58	57	56	54	51
R2	Snow Depth (in)	86	81	78	72	70
	Avg Temp (F)	54	54	57	57	55
LL	Precip (in)	0	0	0	0	0
	Low Temp(F)	45	41	43	42	39
	High Temp(F)	70	70	68	66	61
	Ave Temp(F)	58	57	56	54	51

Reference Loon Lake Elevation: ~6,500 ft

SLT= South Lake Tahoe; elevation: 6,623 ft <http://classic.wunderground.com/cgi-bin/findweather/getForecast?query=38.89361191,-119.99527740&MR=1>

R2 – Rubicon#2 Snotel Site; elevation: 7,689 ft <http://www.wcc.nrcs.usda.gov/nwcc/site?sitenum=724&state=ca>

LON –Loon Lake; elevation: 6,410 ft http://cdec.water.ca.gov/cgi-progs/stationInfo?station_id=LON

Trail Sections (Areas in grey not observed):

Wentworth Springs Campground / Post Pile Grade /

Ellis Creek Tie Intersection / Walker Hill / Soup Bowl / Winter Camp / Little Sluice Area

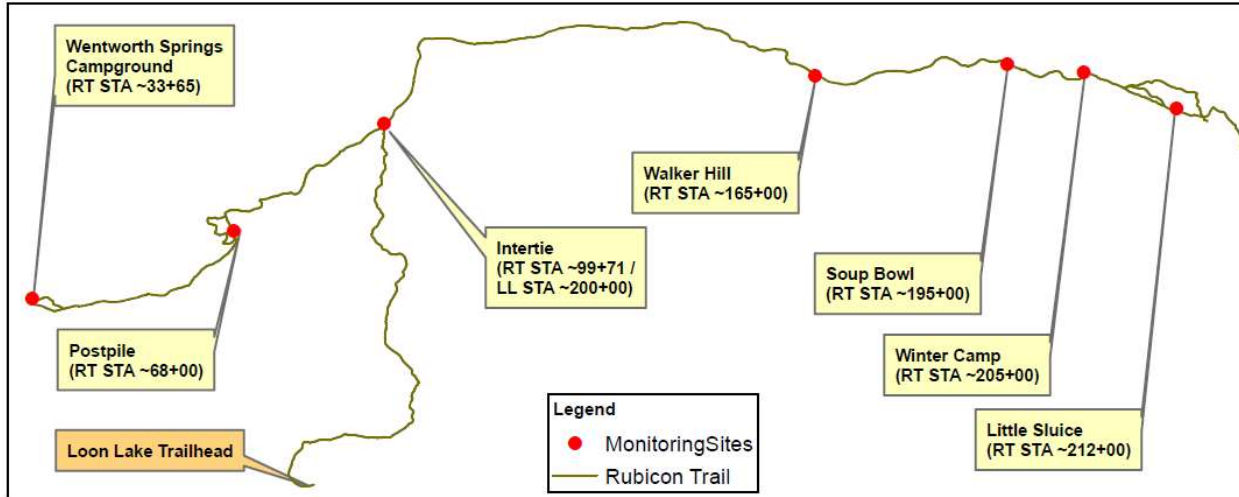
Trail Conditions / Observations: Staff entered the Rubicon Trail using the trail head at Airport Flats (original trail). Warmer temps have accelerated snow melt. Trail conditions were still a lot less snow pack than the previous weeks. The weather was clear and sunny. BMP’s that could be observed were functioning. Drainage appeared to be working as designed. Travel was good in the morning. Access to other inspection sites from Airport Flats trail head not possible due to there is still deep snow beyond Wentworth Springs Campground.

County Assessment: As of this site visit for the conditions observed, the County has determined that the goals of the Saturated Soil Water Quality Protection Plan (SSWQPP) are being met. Observed water levels were low enough to not pose a risk of washing contaminants from the under carriage of vehicles pursuant to the monitoring protocols. Out of the 7 inspection sites only 1 was inspected.

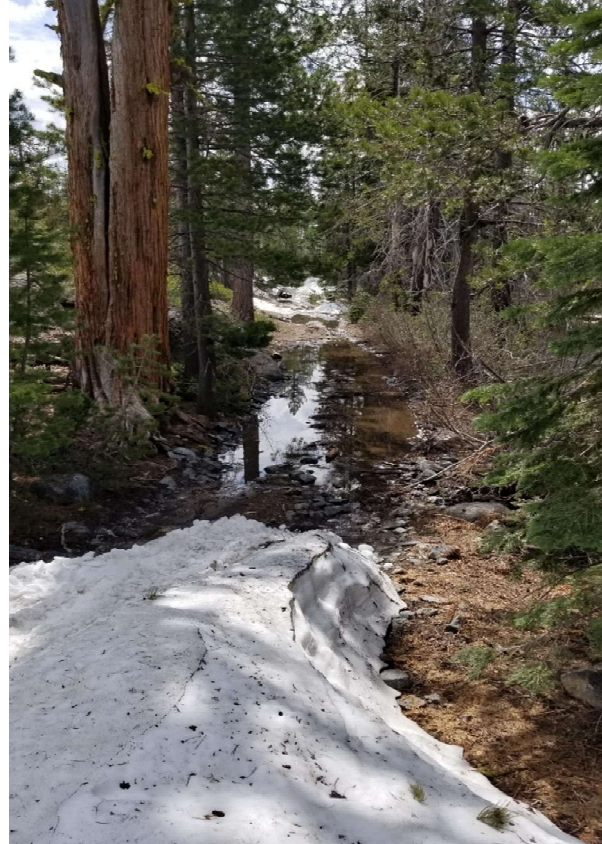
Report reviewed by U.S. Forest Service:
Reviewers: Vincent Pacific & Dionne Uzes

Rubicon Trail Site Assessment May 23, 2023

Photo Monitoring:



Rubicon Trail Site Assessment May 23, 2023



Wentworth Springs Campground

RT Station 33+65

Water Depths:	0.3	0.4	0.5
Notes:	BMP functioning as designed with a surprising low amount of water on trail considering snow year.		

**Rubicon Trail Site Assessment
May 23, 2023**

No Image			
Post Pile			
RT Station 68+00			
Water Depths:	N/A	N/A	N/A
Notes:	Not Observed		

No Image			
Intertie			
RT Station 115+00			
Water Depths:	N/A	N/A	N/A
Notes:	Not Observed		

No Image			
Walker Hill			
RT Station 165+00			
Water Depths:	N/A	N/A	N/A
Notes:	Not Observed		

**Rubicon Trail Site Assessment
May 23, 2023**

No Image			
Soup Bowl			
RT Station 195+00			
Water Depths:	N/A	N/A	N/A
Notes:	Not Observed		

No Image			
Winter Camp			
RT Station 205+00			
Water Depths:	N/A	N/A	N/A
Notes:	Not Observed		

No Image			
Little Sluice			
RT Station 212+00			
Water Depths:	N/A	N/A	N/A
Notes:	Not Observed		

Rubicon Trail Site Assessment

May 31, 2023

Crew: Brian Bettencourt and Nick Howle

Weather Conditions: The weather conditions for the Rubicon Trail were clear. The air temperature on the trail was approximately 47(F) at 7:00 a.m. and about 71(F) around 12:30 a.m. The summary of weather conditions up to this day are as follows:

2023		27-May	28-May	29-May	30-May	31-May
SLT	Precip (in)	0	0	0	0.02	0
	Avg Temp (F)	49	46	49	48	50
R2	Snow Depth (i)	58	58	55	54	53
	Avg Temp (F)	46	45	48	46	48
LL	Precip (in)	0	0	0.08	0.02	0
	Low Temp(F)	36	39	42	38	40
	High Temp(F)	59	56	59	58	60
	Ave Temp(F)	49	46	49	48	50

Reference Loon Lake Elevation: ~6,500 ft

SLT= South Lake Tahoe; elevation: 6,623 ft <http://classic.wunderground.com/cgi-bin/findweather/getForecast?query=38.89361191,-119.99527740&MR=1>

R2 – Rubicon#2 Snotel Site; elevation: 7,689 ft <http://www.wcc.nrcs.usda.gov/nwcc/site?sitenum=724&state=ca>

LON –Loon Lake; elevation: 6,410 ft http://cdec.water.ca.gov/cgi-progs/stationInfo?station_id=LON

Trail Sections (Areas in grey not observed):

Wentworth Springs Campground / Post Pile Grade /

Ellis Creek Tie Intersection / Walker Hill / Soup Bowl / Winter Camp / Little Sluice Area

Trail Conditions / Observations: Staff entered the Rubicon Trail using the trail head at Loon Lake. Warmer temps have accelerated snow melt. Trail conditions have changed drastically with mostly rock showing to some snow in shaded areas. The weather was clear and sunny. BMP’s that could be observed were functioning. Drainage appeared to be working as designed. Travel was greatly improved vs. previous weeks. Access Little Sluice was not possible due to deep snow drift beyond Wintercamp.

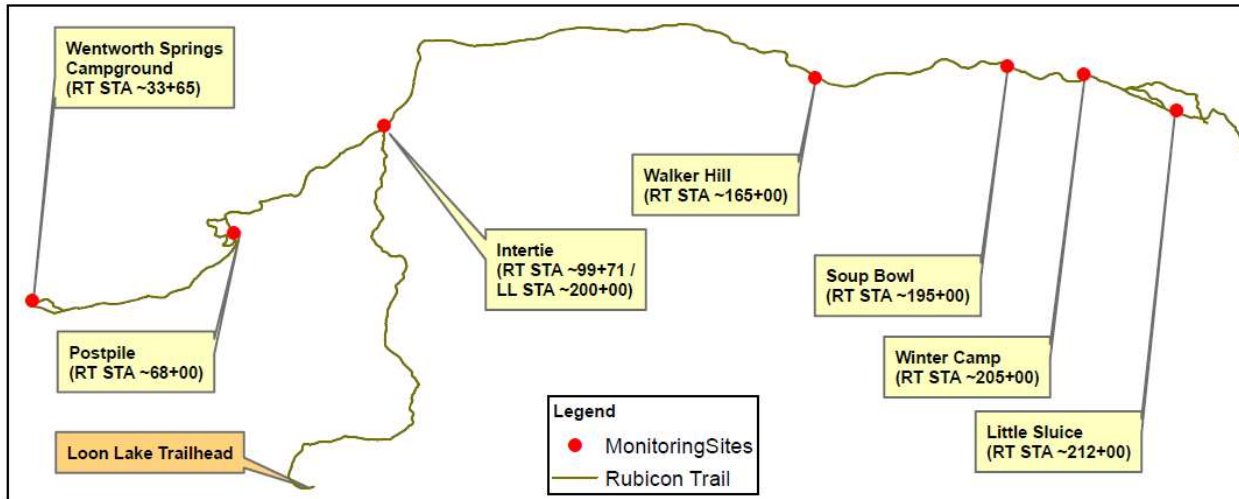
County Assessment: As of this site visit for the conditions observed, the County has determined that the goals of the Saturated Soil Water Quality Protection Plan (SSWQPP) are being met. Observed water levels were low enough to not pose a risk of washing contaminants from the under carriage of vehicles pursuant to the monitoring protocols. Out of the 7 inspection sites only 6 were inspected.

Report reviewed by U.S. Forest Service:

Reviewers: Vincent Pacific & Dionne Uzes

Rubicon Trail Site Assessment May 31, 2023

Photo Monitoring:

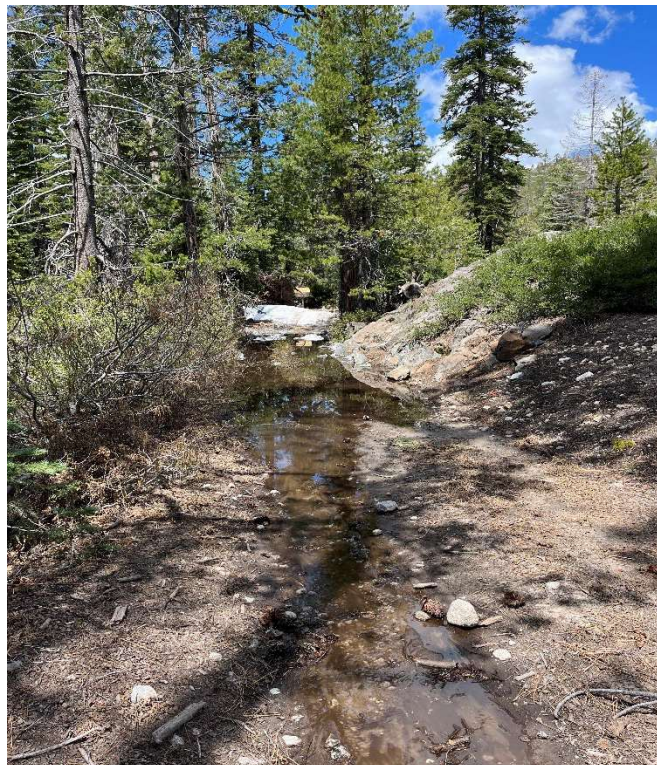


Wentworth Springs Campground

RT Station 33+65

Water Depths: 0.2', 0.4', 0.2'

Notes: BMP functioning as designed with a surprising low amount of water on trail considering snow year.



**Rubicon Trail Site Assessment
May 31, 2023**

Post Pile

RT Station 68+00

Water depths:0.5',0.5',0.4'

Notes: Water draining off trail into drainage as designed



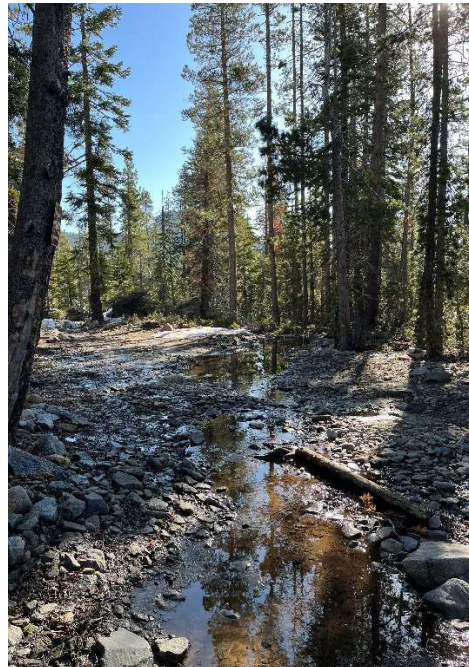
**Rubicon Trail Site Assessment
May 31, 2023**

Intertie

RT Station 115+00

Water Depths: 0.1', 0.2', 0.3'

Notes: Area working as designed



Rubicon Trail Site Assessment May 31, 2023

Walker Hill

No photos available at this time

RT Station 165+00

Water Depths: 0.1', 0.1', 0.1'

Notes: Looking great as a result of Breast Wall / Hardening project from previous years

Soup Bowl

RT Station 195+00

Water Depths: 0.3', 0.2', 0.2'

Notes: Drainage working as designed



Winter Camp

No photos available at this time

RT Station 205+00

Water Depths: 0.3', 0.2', 0.4'

Notes: Area looks great & draining along north side as designed

Rubicon Trail Site Assessment May 31, 2023

Little Sluice

RT Station 212+00
Water Depths: 0' 0' 0'

Notes: Area not observed ,covered in deep snow

Photo from user as of Memorial Day 2023 (little Sluice restrooms under snow)



Rubicon Trail Site Assessment

June 6, 2023

Crew: Brian Bettencourt and Vickie Sanders

Weather Conditions: The weather conditions for the Rubicon Trail were clear. The air temperature on the trail was approximately 52(F) at 7:00 a.m. and about 44(F) around 3:30 p.m. The summary of weather conditions up to this day are as follows:

2023		2-June	3-June	4-June	5-June	6-June
SLT	Precip (in)	0	0	0	0.16	0
	Avg Temp (F)	35	31	38	39	51
R2	Snow Depth (i)	48	46	43	40	38
	Avg Temp (F)	48	47	49	53	54
LL	Precip (in)	0	0	0.00	0.00	0.07
	Low Temp(F)	35	47	47	52	42
	High Temp(F)	63	67	68	67	63
	Ave Temp(F)	51	57	57	58	52

Reference Loon Lake Elevation: ~6,500 ft

SLT= South Lake Tahoe; elevation: 6,623 ft <http://classic.wunderground.com/cgi-bin/findweather/getForecast?query=38.89361191,-119.99527740&MR=1>

R2 – Rubicon#2 Snotel Site; elevation: 7,689 ft <http://www.wcc.nrcs.usda.gov/nwcc/site?sitenum=724&state=ca>

LON –Loon Lake; elevation: 6,410 ft http://cdec.water.ca.gov/cgi-progs/stationInfo?station_id=LON

Trail Sections (Areas in grey not observed):

Wentworth Springs Campground / Post Pile Grade /

Ellis Creek Tie Intersection / Walker Hill / Soup Bowl / Winter Camp / Little Sluice Area

Trail Conditions / Observations: Staff entered the Rubicon Trail using the trail head at Loon Lake. Warmer temps have continued snow melt. Trail conditions have improved greatly and staff was able to access all inspection sites. The weather was clear and sunny. BMP's observed were functioning very well. Drainage appeared to be working as designed. Travel was greatly improved vs. previous weeks. This was the first inspection this year that I, Vickie Sanders had been on and I was presently surprised at how well the trail has drained and the BMP's are functioning as designed. Through one of the roughest winters, trail maintenance has been done that protected the trail from erosion and the water was moving off the trail as designed.

County Assessment: As of this site visit for the conditions observed, the County has determined that the goals of the Saturated Soil Water Quality Protection Plan (SSWQPP) are being met. Observed water levels were low enough to not pose a risk of washing contaminants from the under carriage of vehicles pursuant to the monitoring protocols. Out of the 7 inspection sites only 6 were inspected.

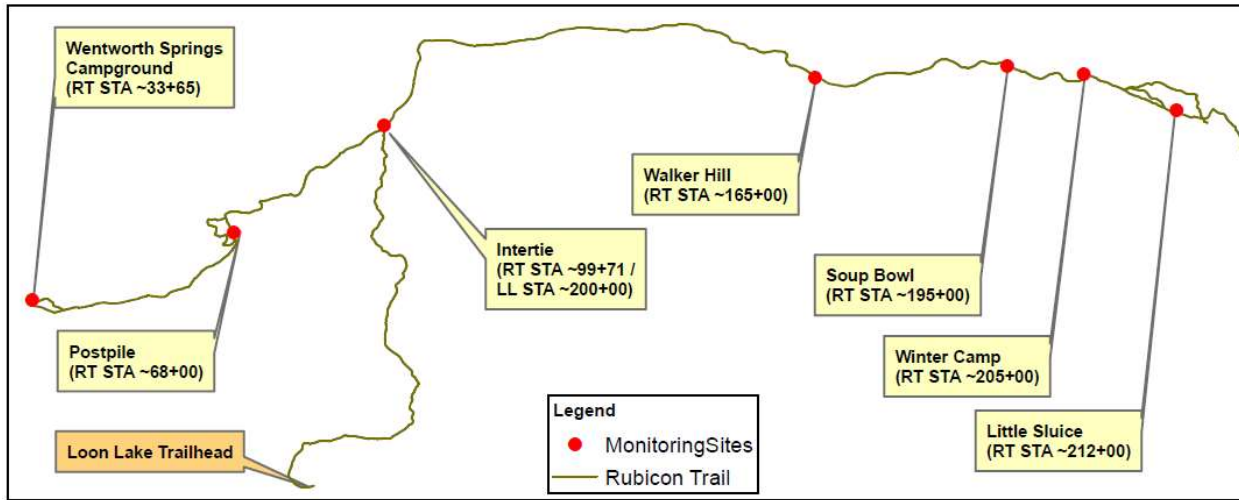
Report reviewed by U.S. Forest Service: 6/12/23

Reviewers: Vincent Pacific & Dionne Uzes

Rubicon Trail
El Dorado County Site Assessment
June 6, 2023

Rubicon Trail Site Assessment June 6, 2023

Photo Monitoring:



Wentworth Springs Campground

RT Station 33+65

Water Depths: 0.1', 0.2', 0.2'

Notes: Trail is much dryer than previous weeks.



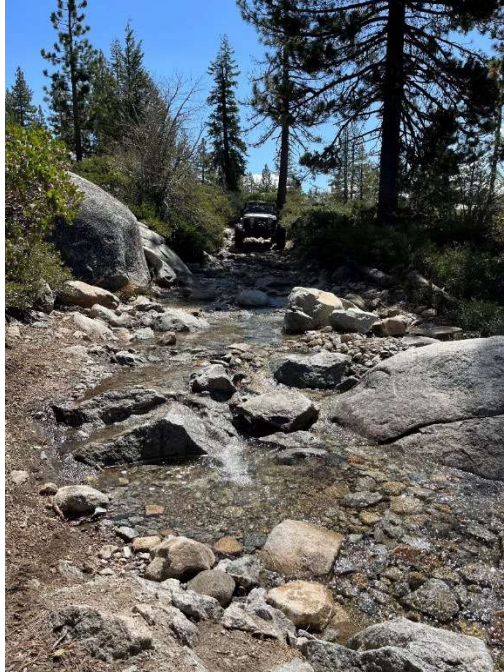
**Rubicon Trail Site Assessment
June 6, 2023**

Post Pile

RT Station 68+00

Water depths:0.3',0.4',0.5'

Notes: Water draining South as intended



Intertie

RT Station 115+00

Water Depths: 0.1',0.1',0.1'

Notes: Well Drained noticeably from last inspection



**Rubicon Trail Site Assessment
June 6, 2023**

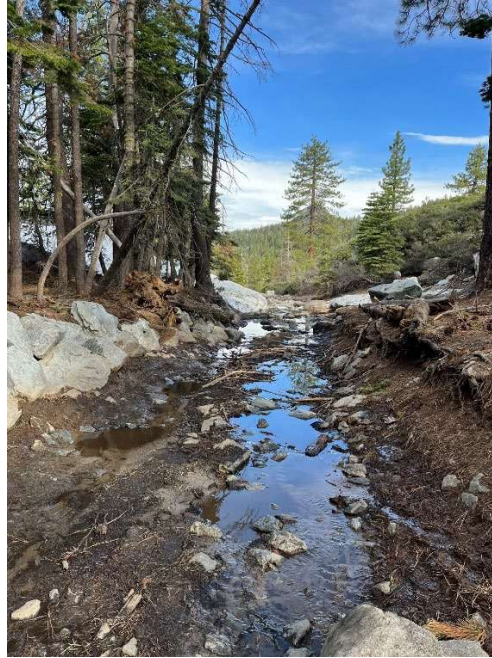
Walker Hill

No photos available at this time

RT Station 165+00

Water Depths: 0.1', 0.2', 0.2'

Notes: Drifts lessened and draining as designed



Soup Bowl

RT Station 195+00

Water Depths: 0.1', 0.1', 0.2'

Notes: Drainage 100% effective/ levels low



**Rubicon Trail Site Assessment
June 6, 2023**

Winter Camp

RT Station 205+00

Water Depths: 0.4', 0.3', 0.2'

Notes: Draining on the north as designed



Little Sluice

RT Station 212+00

Water Depths: 0.3' 0.0' 0.3'

Notes: Mostly snow with little run off.

