



2021
*El Dorado County
River Management
Plan Annual Report*



Table of Contents

2020 El Dorado County River Management Plan Annual Report

	Page
Introduction	2
Adaptive Management.....	2
River Valley.....	4
Water Flows.....	4
River Use.....	7
Outfitter Use.....	8
Institutional Use.....	8
Boat Density.....	8
River Use Preferences	9
County Staff Activities.....	10
El Dorado County Sheriff Law Enforcement.....	12
Outfitter Violations.....	14
Water Quality.....	14
Budget.....	17
Other RMP Observations & Comments.....	18
Public Comments.....	19
Closing.....	19
Appendix A.....	20
Appendix B.....	29
Appendix C.....	31

El Dorado County River Management Plan

2021 Annual Report

INTRODUCTION

The El Dorado County River Management Plan (RMP) 2021 Annual Report provides information on the 2021 river season and ongoing RMP implementation. The RMP has been written to be an adaptive management plan. The Annual River Report in 2020 was written with adaptive management goals. This report will identify what worked and what did not. It will also identify suggested goals for 2022.

ADAPTIVE MANAGEMENT

As staff was reviewing the RMP and the boat density element, the upper and lower runs are separate and should be treated separately if only one segment exceeds the threshold. 7.2.1.1 The County will increase the outfitter river use fee surcharge for each weekend day passenger during the summer rafting season, between and including Memorial Day weekend and Labor Day weekend. Such fee increases shall be *applied only to trips conducted on the segment(s) of the river* on which the threshold exceedance occurred. Based on this policy we have included separate Boat Density reports on the Upper and Lower section. Therefore we have added two graphs on the density one for the upper and lower segments.

With COVID and staffing changes the division would like to resume the River Clean-ups and Interpretive Workshops. In 2022, we will work to restore these two elements back into the program.

River clean-ups: These are very important and unfortunately COVID and last year's low staffing prevented restoration of these programs. Fire season also plays into events on the river in August as the past two years have proven. Wildfire smoke in the valley makes a clean-up event unhealthy and infeasible. I hope to have one in June and perhaps July so we get a jump on the river season. From observation trash it did not appear to be excessive, but is something we need to address. Staff did clean up any trash as they came upon it.

I would like to work collaboratively with the outfitters on a workshop. If anyone has ideas and would like to contribute please contact Prescott Nicholson, his email address is Prescott.nicholson@edcgov.us.

Education is always our primary objective. We will push the trash and life jacket campaigns again and we will be in the Coloma to Greenwood segment of the river. Working with the Sheriff's Office this year we were able to educate in this segment more than any other year. Tickets were given for jumping from the HWY 49 bridge and the Sheriff is able to provide the

muscle needed when groups would argue with staff. Staff really appreciated the Sheriff's Office, Jon Densmore who contributed so much to the program and the support for the Parks Division.

The kiosk at Henningsen Lotus Park was updated with the new map and basic educational information. We would like to update the other kiosks in 2022. We have been watching the budget and being cautious with the funds. But I believe in 2022, we can update the kiosk at North Beach at State Parks, and at Greenwood Creek in Bureau of Land management (BLM) lands. See locations in appendix B.

RIVER VALLEY

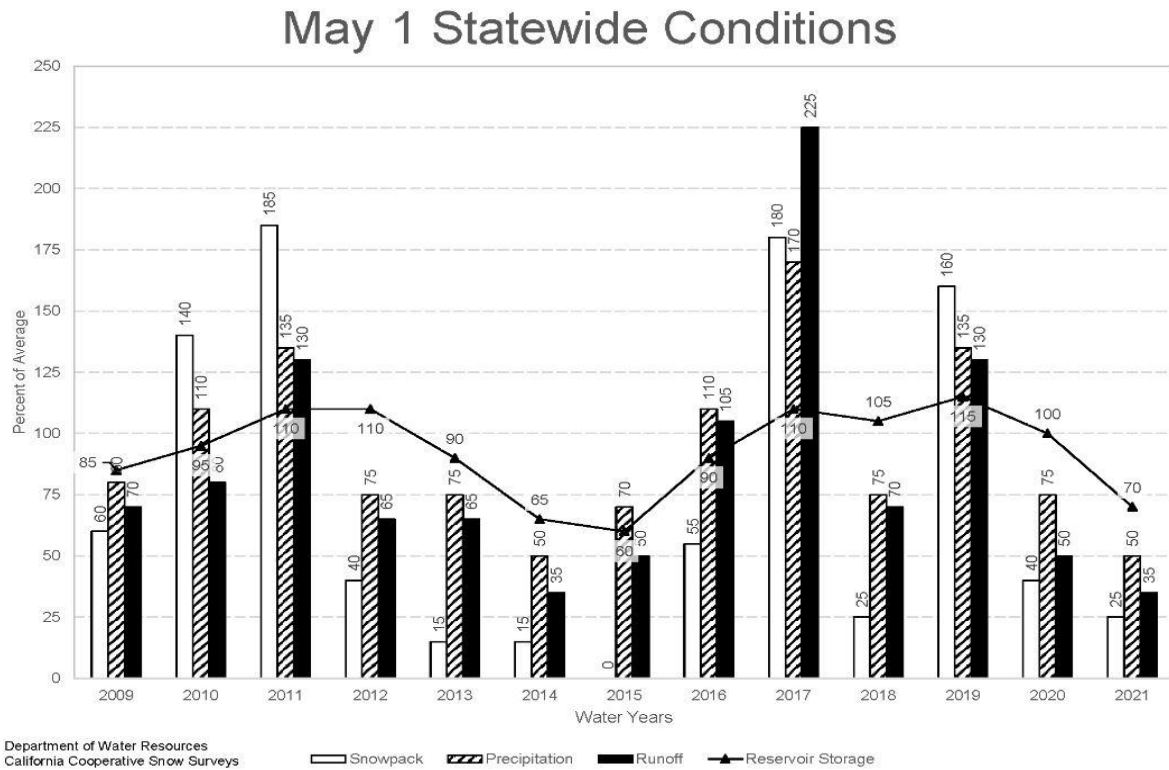
The 21-mile section of the South Fork of the American River from Chili Bar Dam to Folsom Reservoir continues to be one of the most rafted and kayaked rivers in the State of California, with annual use averaging well over 100,000 people.

Seven miles of this river flows through the Coloma Lotus Valley, a well-known historic and national recreational destination. There are four large public campgrounds Camp Lotus, Coloma Resort, American River Resort and Ponderosa Campground in addition to numerous outfitter camp ground on the river. Marshall Gold Discovery State Historic Park, Henningsen Lotus County Park, and several BLM (Bureau of Land Management) parcels situated along the river are used by thousands of visitors annually. Public trails provide access to the river and, in some areas, run adjacent to the river at either end of the valley. Public access to the river is also available at the State Highway 49 Bridge. The number and diversity of recreational facilities and privately owned properties along the river, combined with the annually scheduled recreational water release flows, make the South Fork of the American River a globally recognized destination for class II-III boating and other forms of river recreation.

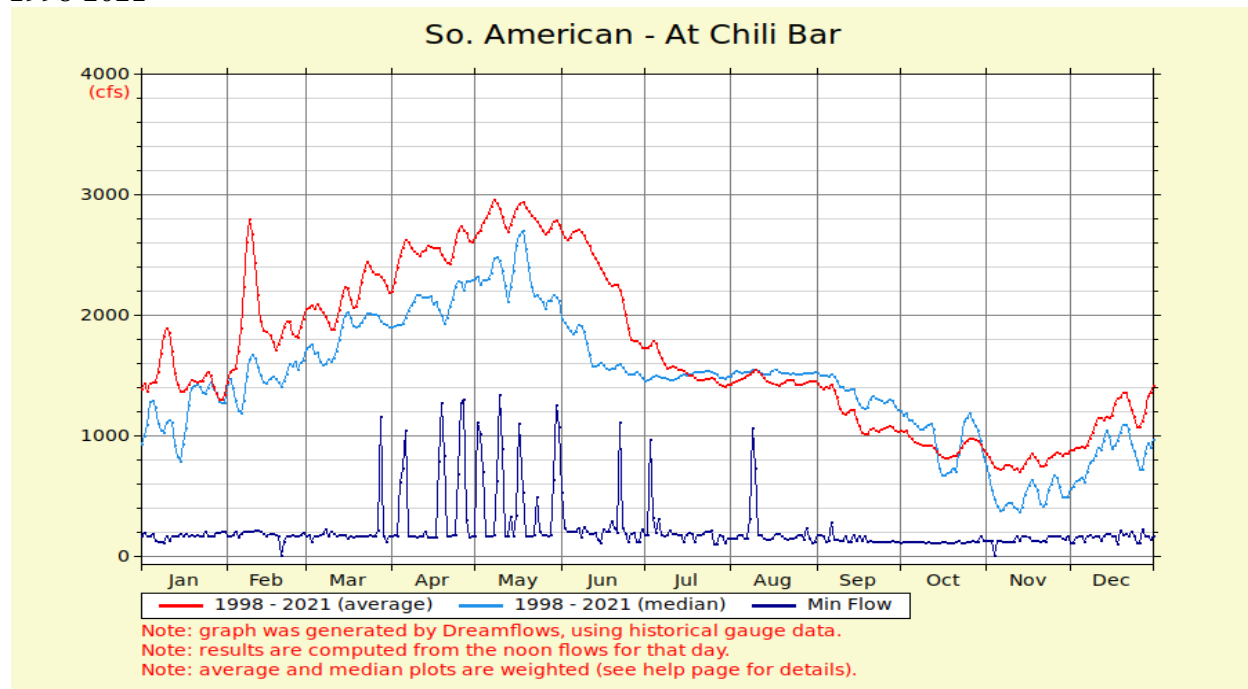
WATER FLOWS

The precipitation for 2021 ended up being dramatically below average for the water year. As of May 1st, the yearly precipitation was 50 percent of normal, a decrease from 70 percent at the same time last year. The snowpack water content on May 1, 2021, was about 25 percent of average for the date as compared to 40 percent on May 1, 2020. May 1 reservoir storage statewide was also 70 percent of average overall compared with 100 percent last year on May 1 which was a 30 percent decrease from the same point in 2020. The complete California Department of Water Resources Bulletin 120 (May 1, 2021) report is available at <http://cdec.water.ca.gov/snow/bulletin120/>.

Figure 1: California May 1 Statewide Conditions Comparison, 2009-2021



Daily average and mean South Fork of the American River flow as recorded at Chili Bar 1998-2021



The water year type in 2021 was designated as a “Super Dry” year. The water year type designation prescribes the minimum release schedule out of Chili Bar Reservoir for river recreation. The Federal Energy Regulatory Commission (FERC) licenses for Sacramento Municipal Utility District’s and Pacific Gas and Electric’s dams on the South Fork of the American River require regular recreational releases. In late summer of 2021, Sacramento Municipal Utility District acquired Chili Bar Dam from Pacific Gas and Electric.

Until May 9, 2021 water was released Saturday thru Tuesday. There were no water released on Wednesday through Friday. The release volume averaged 1,300 cubic feet per second (cfs) on weekdays and 1,500 cfs weekends. In June things switched around and there were no releases on Tuesday’s and Wednesday’s but Thursday through Monday had releases at 1,300 cfs all days. This was the release schedule until September 7, 2020 when released days moved to Saturday and Sunday only at 1,300 cfs. Beginning October releases were only on Saturdays at 1,300 cfs.

The change in water year type from 2020 to 2021 resulted in lower releases.

The chart below explains the Water Year Type designations with corresponding minimum flow schedules out of Chili Bar Dam, per the FERC licenses.

South Fork American River Below Chili Bar Reservoir Dam Minimum Recreational Flow by Water Year (cfs)								
WATER YEAR TYPE	PERIOD	MONDAY	TUESDAY	WEDNESDAY	THURSDAY	FRIDAY	SATURDAY	SUNDAY
Super Dry	April - Memorial Day	3 Hrs @ 1300					3 Hrs @ 1300	3 Hrs @ 1300
	Memorial Day - Labor Day	3 Hrs @ 1300			3 Hrs @ 1300	3 Hrs @ 1300	5 Hrs @ 1300	5 Hrs @ 1300
	Labor Day - September						3 Hrs @ 1300	3 Hrs @ 1300
	October - March						3 Hrs @ 1300	
Critically Dry	March - Memorial Day	3 Hrs @ 1300					3 Hrs @ 1300	3 Hrs @ 1300
	Memorial Day - Labor Day	3 Hrs @ 1300			3 Hrs @ 1300	3 Hrs @ 1300	5 Hrs @ 1500	5 Hrs @ 1500
	Labor Day - September					3 Hrs @ 1300	3 Hrs @ 1300	3 Hrs @ 1300
	October - February						3 Hrs @ 1300	
Dry	March - Memorial Day	3 Hrs @ 1300	3 Hrs @ 1300			3 Hrs @ 1300	3 Hrs @ 1500	3 Hrs @ 1500
	Memorial Day - Labor Day	3 Hrs @ 1300	3 Hrs @ 1300		3 Hrs @ 1300	3 Hrs @ 1300	5 Hrs @ 1500	5 Hrs @ 1500
	Labor Day - September					3 Hrs @ 1300	3 Hrs @ 1300	3 Hrs @ 1300
	October - February						3 Hrs @ 1300	3 Hrs @ 1300
Below Normal	March - Memorial Day	3 Hrs @ 1300	3 Hrs @ 1300		3 Hrs @ 1300	3 Hrs @ 1300	3 Hrs @ 1500	3 Hrs @ 1500
	Memorial Day - Labor Day	3 Hrs @ 1300	3 Hrs @ 1300		3 Hrs @ 1300	3 Hrs @ 1300	6 Hrs @ 1500	6 Hrs @ 1500
	Labor Day - September				3 Hrs @ 1300	3 Hrs @ 1300	3 Hrs @ 1500	3 Hrs @ 1500
	October	3 Hrs @ 1300				3 Hrs @ 1300	3 Hrs @ 1500	3 Hrs @ 1500
	November - February						3 Hrs @ 1300	3 Hrs @ 1300
Above Normal	March - Memorial Day	3 Hrs @ 1300	3 Hrs @ 1300	3 Hrs @ 1300	3 Hrs @ 1300	3 Hrs @ 1300	4 Hrs @ 1750	4 Hrs @ 1750
	Memorial Day - Labor Day	3 Hrs @ 1500	3 Hrs @ 1500	3 Hrs @ 1500	3 Hrs @ 1500	3 Hrs @ 1500	6 Hrs @ 1750	6 Hrs @ 1750
	Labor Day - September				3 Hrs @ 1500	3 Hrs @ 1500	3 Hrs @ 1500	3 Hrs @ 1500
	October	3 Hrs @ 1300				3 Hrs @ 1300	3 Hrs @ 1500	3 Hrs @ 1500
	November - February						3 Hrs @ 1500	3 Hrs @ 1500
Wet	March - Memorial Day	3 Hrs @ 1500	3 Hrs @ 1500	3 Hrs @ 1500	3 Hrs @ 1500	3 Hrs @ 1500	6 Hrs @ 1750	6 Hrs @ 1750
	Memorial Day - Labor Day	4 Hrs @ 1500	4 Hrs @ 1500	4 Hrs @ 1500	4 Hrs @ 1500	4 Hrs @ 1500	6 Hrs @ 1750	6 Hrs @ 1750
	Labor Day - September				3 Hrs @ 1500	3 Hrs @ 1500	3 Hrs @ 1500	3 Hrs @ 1500
	October	3 Hrs @ 1300				3 Hrs @ 1300	3 Hrs @ 1500	3 Hrs @ 1500
	November - February						3 Hrs @ 1500	3 Hrs @ 1500

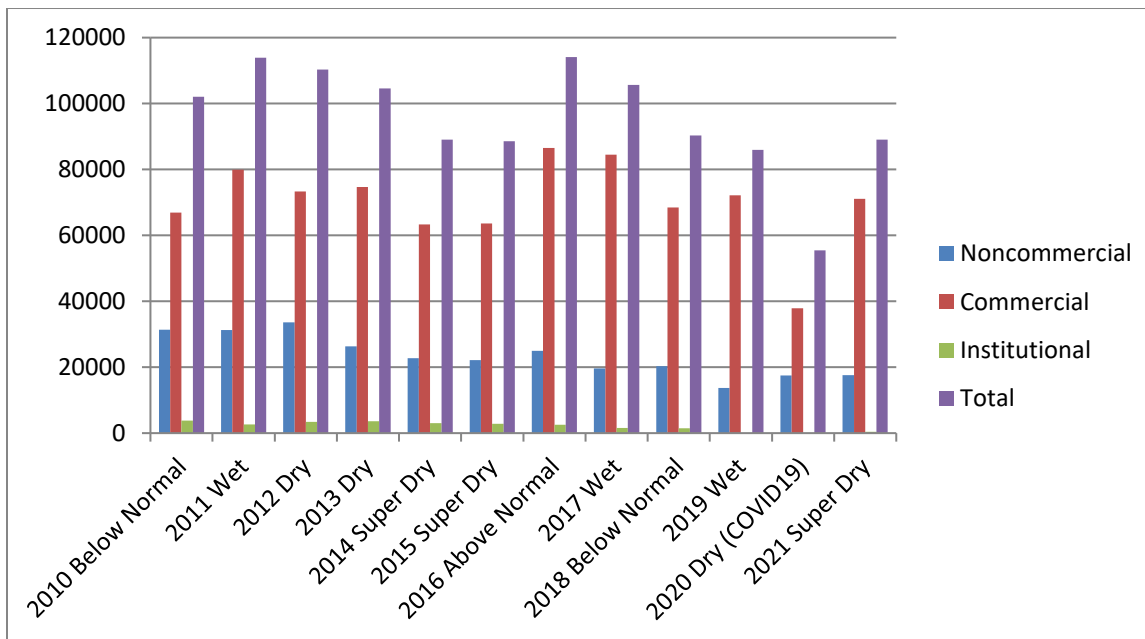
Table 1: Chili Bar Dam Release Schedule by Water year Type (Note: 2021 was a “Super Dry” water year)

RIVER USE

In 2021 commercial river use returned to a normal year despite the dry year. Water flows were available Thursday through Monday, with no water releases on Tuesday and Wednesday.

Spring runoff (snowmelt) behind dams that control the river level on the South Fork usually begins in May. The availability of whitewater on the river is consistent from year to year because of the FERC licenses’ minimum recreational water flow requirements. The figure below shows the river use totals for 2021. Use by commercial outfitters (71,102 guests) was up 88 percent from 2020, recognizing that 2020 was a low year due to COVID. Estimated use by private boaters was around 17,600 people, this is an estimate using boat count taken by staff this year. There were over 60 boat counts done for the 2021 season these counts includes private and commercial trips.

*Commercial Use Numbers do not include guides and guide trainees



The 5-mile Coloma to Greenwood (C2G) reach in the Coloma Lotus Valley continues to be a popular class II section of the river. The seasonal use on the C2G reach has been difficult to quantify due to the many put-in and take-out locations along this section of the river. Adding to the complexity of capturing accurate use numbers for this reach is its accessibility for use during non-scheduled water release days, use at minimum flows, and use for multiple runs in a single day. Staff had hoped to get a count of tubers in this section, but we were short on personnel and the intern focused on boat counts identified in the RMP.

There are approximately 30 weekend days annually between Memorial Day weekend and Labor Day weekend. Based on prior year counts, a conservative estimate of use for the C2G run could easily be 9,000 people, based on an estimated average of 300 people per weekend day. Users would include class II boaters, inner tubes, and other casual floaters who do not usually attempt to float the class III sections of the river.

The focus of the river staff in 2021 was on education particularly in the C2G reach, where many tubers and other casual floats occur. Life jacket compliance, trespass and litter are educational topics are that very important in this area.

OUTFITTER USE

Commercial outfitters are the primary source for public rafting excursions down the South Fork. There were 22 permitted outfitters in 2021; 40 permits were used. 20 permits were issued in 2020. Some outfitters did not operate due to COVID. The count for commercial use was 71,102, which is up 88% compared to use from 2020 and pre-COVID use numbers, as you can see in the graph above.

The consolidation of outfitters on the South Fork and rivers nationwide has been an ongoing trend over the last 15 years, resulting in more companies having multiple trips on the water or more extended trips, impacting other river users when these companies' trips overlap. Overlapping typically occurs at lunch rest spots and at various locations on the river when one trip slows down for photos, groups join up for takeout, or when a full river trip catches up to a trip doing just the lower section. While density remains below RMP thresholds, there were still some congestion issues at popular spots for taking out and lunch/bathroom breaks.

There were many questions this year about Pod size and guide etiquette. I am including Element 6.2.2 of the RMP regarding Maximum Group Size.

Element 6.2.2 of the RMP

Element 6.2.2.1 With the exception of Element 6.2.2.6, the number of boats in each group on the South Fork will be limited to 7 and will not exceed 56 people (passengers, guests, guides) per group. If more than one group is traveling together, each group must have a five minute period between launches from Chili Bar to below Hospital Bar rapid and when launching trips from other put in's and lunch stops in between. On the river each group will then stay out of sight of each other (lead boat cannot see last boat from other group).

Element 6.2.2.2 Rafts in a group shall remain in reasonably close proximity between Chili Bar and Trouble Maker Rapids and between Fowler's Rock and Hospital Bar Rapids (class III sections) to give assistance, whenever needed, without unnecessary delay.

6.2.2.3 Rafts in a river trip shall not purposefully integrate into another's group trip in class III whitewater.

6.2.2.4 If flows are above 6,000 cfs at Chili Bar, trip sizes shall be a minimum of 2 rafts. Permit holders on a trip shall recommend to guests that they wear wetsuits to reduce the risk of hypothermia.

6.2.2.5 A ratio of one guide per 8 guests shall be required on every permitted trip. Guides shall meet the requirements of Element 6.2.7.

6.2.2.6 All kayak and canoe groups will be limited to a maximum of 12 boats in any group while on the river.

6.2.2.7 Groups shall maintain a distance apart from each other of 4 boat lengths, except when overtaking another group.

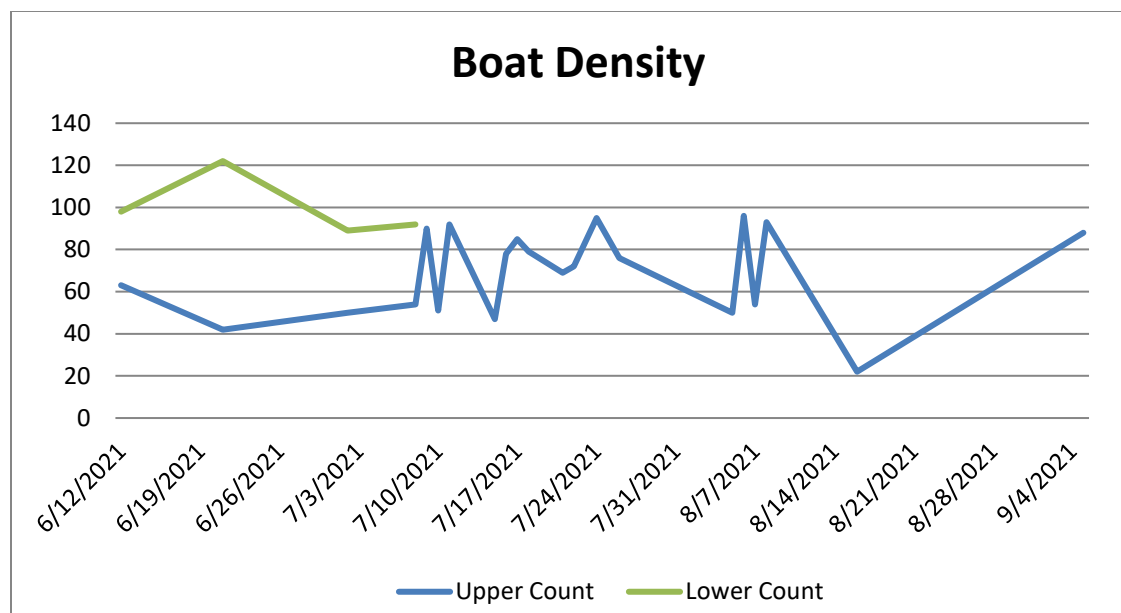
INSTITUTIONAL GROUP USE

Only organizations teaching accredited educational courses will be able to continue to register as Institutional Groups per the updated RMP. Staff has been working with the nonprofit groups previously identified as institutional groups, to meet the requirement for commercial use. To date there have been no issues and it is anticipated that the six non-profit organizations will convert to commercial permits in 2022.

BOAT DENSITY

The boat density safety measure aims to prevent boating safety hazards from occurring due to boat congestion on weekends. Boat density is the total number of boats passing a set point on the river within a two-hour window. In the event density passes three hundred boats twice in a season, the RMP prescribes austerity measures to manage overcrowding and regain allowable density levels.

Boat density measurement comes from taking an aggregate total of all rafts, kayaks, inflatable kayaks, and inner tubes, paddleboards, or similar flotation devices in a two-hour period in a designated location.



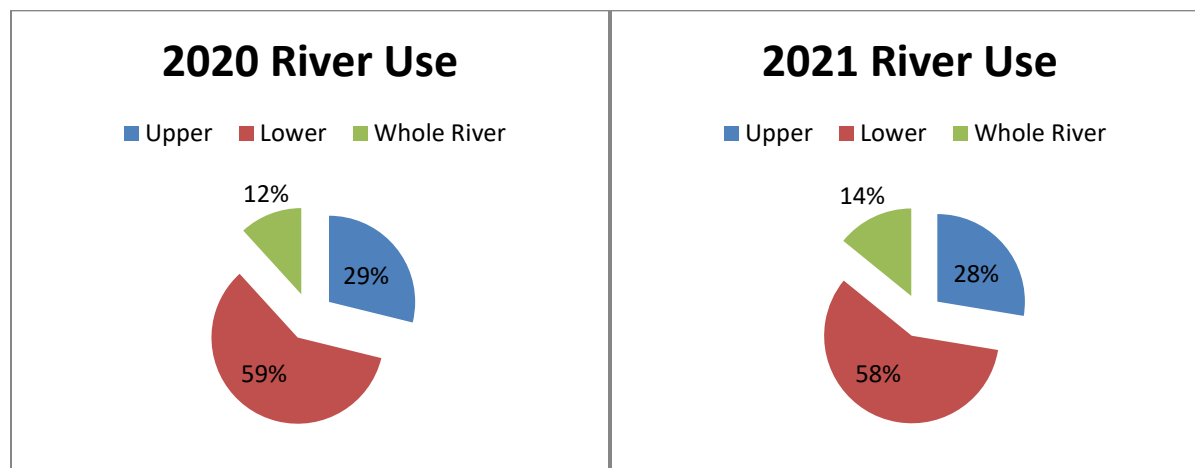
Carry capacity was not exceeded; therefore no mitigation measures to restrict boating use are necessary for 2022. The sources of data utilized for estimating river use were boat counts completed as identified in Appendix C of the RMP, page 94. Density Threshold: 300 boats in 2 hours (based on ¼ hour increments and a rolling 2-hour period) at Meatgrinder, Troublemaker, Barking Dog, Fowlers Rock or Satan’s Cesspool rapids on two days during any one season. Two kayaks are equal to one boat for the purposes of determining boat density.

As a reminder per RMP 7.2.1.1 The County will increase the outfitter river use fee surcharge for each weekend day passenger during the summer rafting season, between and including Memorial Day weekend and Labor Day weekend. Such fee increases shall be *applied only to trips conducted on the segment(s) of the river* on which the threshold exceedance occurred. Based on this statement we have included separate Boat Density reports on the Upper and Lower section.

RIVER USE PREFERENCES

The longstanding trend of both private and commercial river use is increased use of the lower segment of the river. The County can track total use patterns with regards to financial reports and observations; however, as previously mentioned, the private user data does not represent a full accounting of use patterns. In previous years, the predominant use of the lower segment persisted throughout the season. Whole-river trips accounted for an average of 14% of the total use in 2021. The lower section is better equipped with put-in and take-out facilities, likely reflecting an efficient business decision with a more extended day trip for commercial passengers. Trips solely on the lower section were 58% of total 2021 use. Trips solely on the upper section remain relatively stable, at 28%. Total activity peaked in June, July and August before dropping back down by September.

The proportion and number of whole river trips most likely reflect release levels, as higher flow rates increase speed, thus allowing for more trips to cover the entire length of the South Fork in a day. Lower, slower flows likely deter whole-river trips. The middle, C2G section of the river is the most accessible section for floating of inner tubes, paddleboards, and other inflatable crafts. Totals reflect commercial use, while private counts appear in the specified months; private use is not monitored at a sufficient level to extrapolate meaningful conclusions.



2021 COUNTY STAFF ACTIVITIES

The beginning of the 2021 river season started out with some restrictions but were lifted and commercial companies could start their season as normal with standard COVID 19 protocols still in place. The county was able to implement a few changes mentioned in last year's report.

The division received a lot of comments regarding the beach at Henningsen Lotus Park. The comments were regarding tents on the beach and access to the water. The issue seemed to be more than just tents. The Parks Manager met with some local representatives and determined if we changed the direction of the boat launch area it would increase the beach area. Signage was also an issue. River users cannot see where the boat ramp is located. The old launching facility was very tight and could only accommodate one vehicle at a time. After the widening of the boat launch the beach space increased which helped with the congestion for both uses. Staff added additional signs and posted that tents should be used on the grass area.

Recruiting of staff was difficult this year Prescott Nicholson was a River Aide in 2020 and he returned this year assuming a new position starting in the full time position of Parks and Trails Maintenance Worker and later in the season the position of Parks Program Coordinator. Working with Prescott was Tim Canavarro who did a wonderful job on the river. We also hired Lacey Anderson at the end of the season, though after the wildfires started work on the river slowed down. The smoke in the valley resulted in many canceled trips. Extra help staff, Tim,

and Lacey were requested to assist the Office of Emergency Services with the impacts of the fire on residents and the evacuation centers. They did an outstanding job.

Park staff worked with the GIS surveyors' office and the public to develop an updated color map for river users. (See appendix B)

The kiosk at Henningsen Lotus Park was updated with new maps and educational information. We hope to update more kiosks with the same information in 2022.

The Parks Division was fortunate to have an intern this year who assisted with water samples, boat counts, public education. Karson O'Rourke did an excellent job with boat counts and education when water samples were high. We did not get the tuber count we had hoped for due to low staffing, and boat counts at the designated locations were the priority. Parks staff and the Sheriff's Department were able to work together on the river providing better coverage which allowed Parks Division staff the opportunity to show the Sheriff's Office what they see on the river as issues. This also provided the coverage in the C2G section and Parks staff was able to relay the concerns we have heard from property owners along this section.

The Parks Manager received several emails and phone calls from various outfitters regarding Pod size in 2021. The RMP restricts Pod size to 7 boats. Some companies hold multiple permits that they pay for separately. When they run large trips they sometimes run 7 boats under one permit and 7 under another for example. This may be a loophole in the RMP but as long as the Pod's are launched 5 minutes apart this is not a violation. Everyone was trying to get their passengers down the river within the flow window. A review of the RMP is done every five years. In 2023 this issue can be evaluated and if changes are needed this would be the time to make them. Staff conducted boat counts beginning in June and continued throughout the season. Violations were issued as needed.

Due to the confusion and frustration of the POD size issue, the Parks Manager held a meeting with the outfitters to discuss this issue and update them on other topics of interest. The County usually has an outfitters meeting at the beginning of the season jointly with State Parks and BLM. But the manager felt this issue required an impromptu meeting. This was a very productive meeting with about 15 outfitters represented. When issues arise in the future this was a great format to get them resolved and to keep everyone informed.

This was the first year the County issued permits and collected the fee for State Parks. El Dorado County was contacted by the State in 2019 regarding the possibility of the County taking over the collection of fees for State Parks. In the past, outfitters would get a separate permit from the State which was referred to as a concessionaire permit. This permit did not fit the description of the outfitters operations and the definition of a concessionaire permit. To resolve the situation the State and the County entered into a Joint Powers Authority and the County issues one permit and collects the County fees and the State fees. The County pays the State quarterly. The outfitters were in support of this arrangement and it has worked out well for the for all parties.

Day to day activities for staff included:

- Provided boating safety, boater responsibilities, private property education, river etiquette, leave no trace education, and river flow information at river accesses and on the river.
- Stocked kiosks with free waterproof river maps that provide boaters with the locations of restrooms, put-ins and take-outs, quiet zone locations, names of rapids with GPS coordinates, public and private land designations, agency and campground phone numbers, and a boating safety checklist.
- Assisted law enforcement, upon request.
- Educated tubers on river safety and life jackets in the C2G section.
- Emphasized controlling quiet zone noise, use of public lands, litter education, and use of life jackets by all boaters and inner-tubers; dealt with ongoing concerns of the public.
- Regulate commercial use in the quiet zone for complicity.
- Provided safety information to people floating/boating on the class II section.
- Boat counts as identified in the RMP for carrying capacity.
- Water samples as identified in the RMP.
- Reported permitted outfitter violations to administration for processing as identified in the RMP.

Education and Outreach

Staff had hoped to have a river cleanup in August or September. Unfortunately the Caldor Fire hit and smoke in the valley along with personnel being moved to assist with fire efforts made a clean up infeasible. We will plan cleanups early in 2022. Staff did daily river cleanup on the upper and lower sections to manage garbage in the river. Onshore and shoreline cleanup was done in and around Henningsen Lotus Park.

In an effort to educate the public a new educational campaign was developed. In 2021, we released another new sign educating the public on picking up their trash, Staff also worked with campgrounds and the public to inform users on the new education program. Employees handed out polypropylene mesh trash bags to users and beach goers to help with the high trash levels from the previous years.



EL DORADO COUNTY LAW ENFORCEMENT

During the 2021 rafting season EDSO Deputy Sheriff Jon Densmore patrolled the South Fork of the American River from Chili Bar to Folsom Lake on a river raft. He spent in excess of 260 hours on the river. This total does not include the time spent on equipment maintenance, reporting, training, etc. The Sheriff's total hours on the river were cut short by the Caldor Fire, by about four weeks.

The below is a summary of quantifiable activity on River Patrol:

Contact with approximately 1,875 boats (kayaks, rafts, SUPS, etc.) and over 7000 people

400 recorded contacts which were educational or enforcement in nature. These included advisements on PFDs, navigation, safety, ordinance (glass bottles, bridge jumping), reckless behavior, intoxication, and inappropriate behavior.
Twelve active river rescues

One medical aid/ drown victim (Intoxicated, NO PFD)

One body recovery. Skeletonized human remains were found on a rock, upstream from Troublemaker and the recovery was made by river patrol in a kayak, with assistance from the Unmanned Aerial Systems Unit and EDC Parks.

Six citations: bridge jumpers

Sixteen responses to Henningsen Lotus Park for land based issues: including drinking, fighting, abandoned vehicles, lost children, dogs off leash and reckless vehicle operations.

Countless mutual aids: EDC Parks & Recs, CA. State Parks, American River Conservancy, BLM, Commercial Rafting Companies

OUTFITTER VIOLATIONS

County Parks issued 7 violations in 2021.

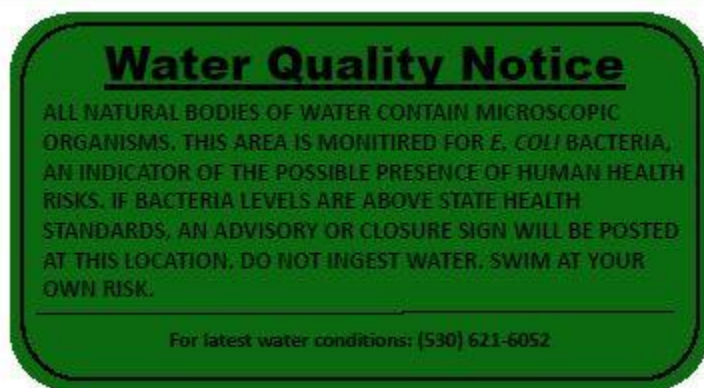
1. 4 issued for Pod size violation with 1 violation overturned after appeal
2. 3 issued for unmarked boats
3. 1 issued for late reporting

We received a few complains about commercial trips stopping on private property and loud noises in quiet zones. The county sent out a reminder email to all the outfitters reminding them of river etiquette. There were no more complaints.

Private boater violations are issued by the Sheriff's Office and are identified above in their report. County parks staff is not able to issue private boater violations.

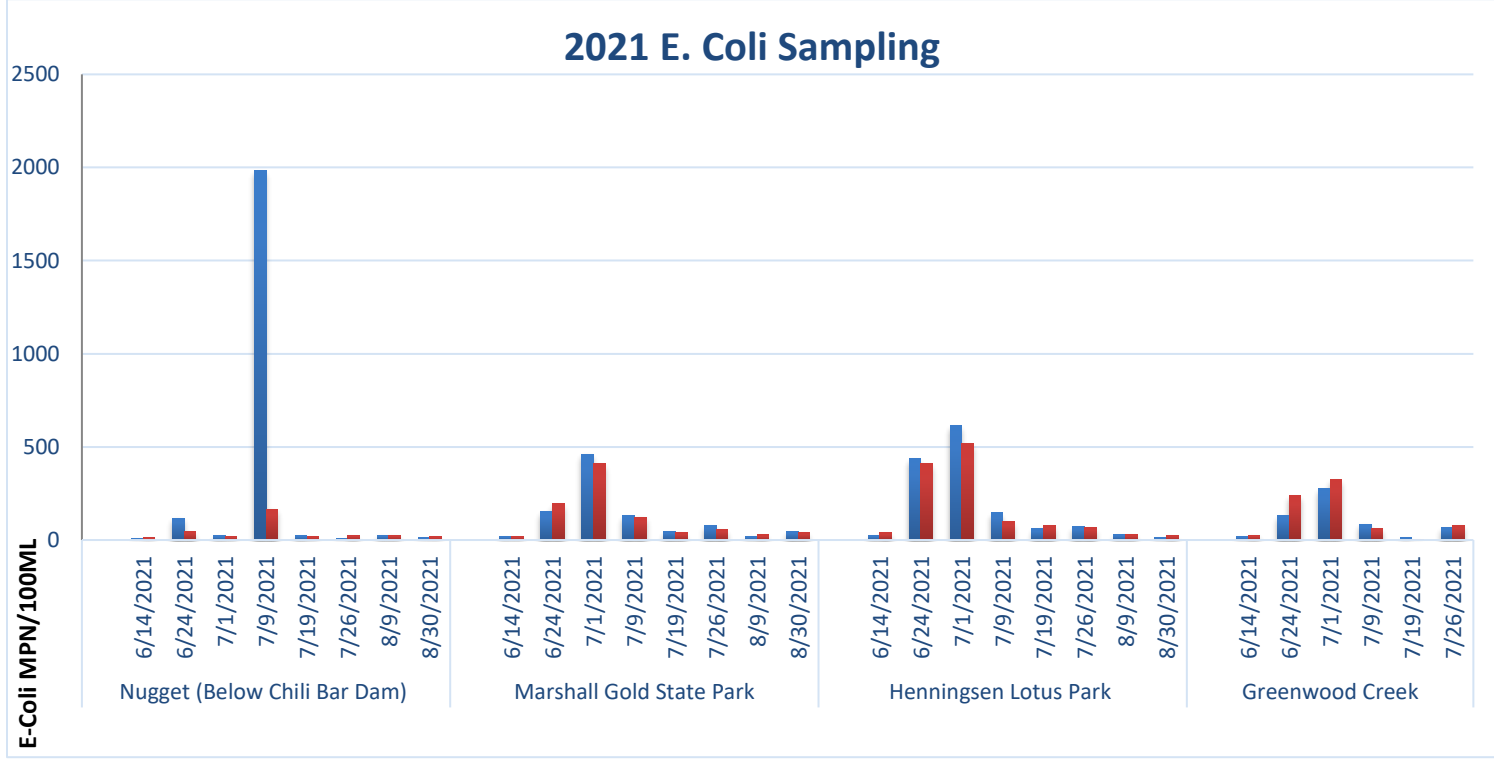
WATER QUALITY

The water quality monitoring bacterial test results in 2021 showed unacceptable readings in late June of above 435.2 mpn, which increased to 613.1 mpn a week later in early July. With bacterial testing results showing high, Environmental Management directed river staff to post signs (shown below) warning of high E-Coli levels and instructing the public to stay out of the water. The following week Environmental Management instructed river staff to retest. This time the E-Coli results came back at a normal range. As staff looked at the test results they noticed that tests taken on Thursday after 2 days of no water release (fish flow) E- Coli levels were high. Tests taken after there was water release showed water quality improved to acceptable levels. Environmental Management receives copies of all water sample results and advises the Parks Division when high levels are present. Since it appeared that levels were high when there was no water release, signs were left up to inform the public that there could be high levels on low flow days. This is typical in drought years when water flow is at a minimum.

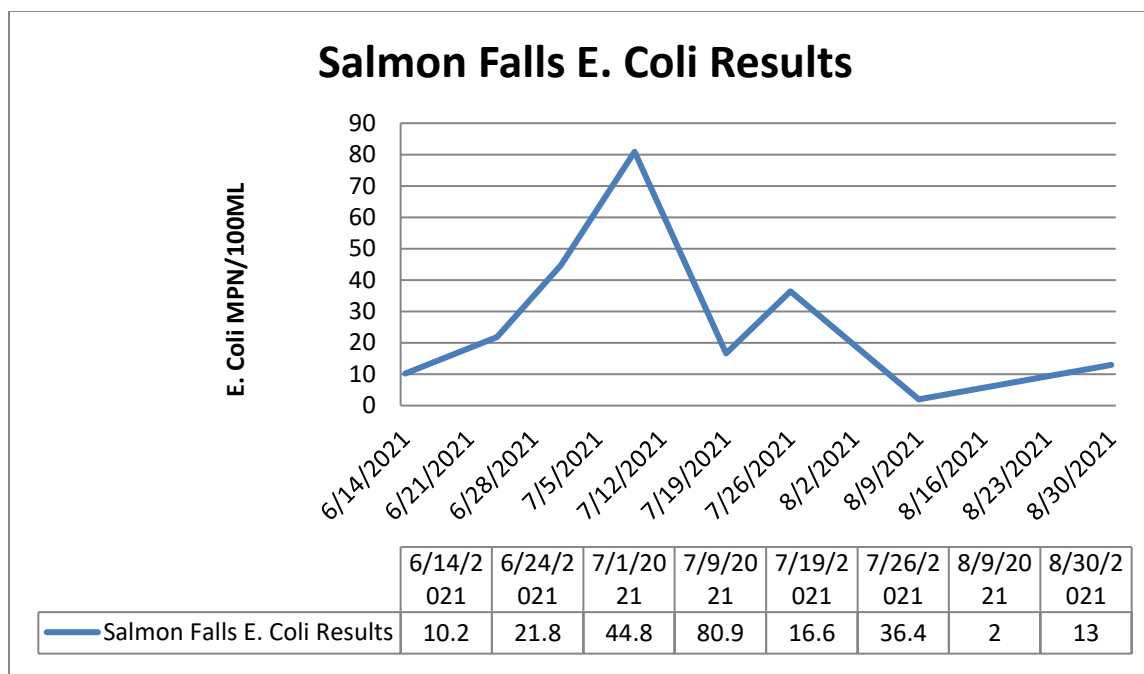




There were no other days that had test results above normal. County Parks conducted water testing from June through September 2021.



The results are presented below in bar-chart form and in appendix A.
Shore=Blue Transect=Red



Bacteria coliform testing and other water quality measurements are conducted by the Sacramento Municipal Utility District (SMUD) and Pacific Gas and Electric (PG&E) as prescribed in their new FERC licenses. This report is unavailable at this time. PG&E does not post their reports in a similar fashion. Chili Bar project was transferred to SMUD at the end of September 2021.

PG&E tests Chili Bar Reservoir and does not have the results posted. SMUD will post Chili Bar Reservoir testing results in 2022. The updated RMP continues County parks bacterial coliform testing during the primary boating season only.

The County also has a comprehensive Stormwater Program that implements stormwater mitigation measures and best management practices (BMPs) as prescribed by the County Storm Water Management Plan and the Phase II Municipal National Pollutant Discharge Elimination System (NPDES) Permit.

BUDGET

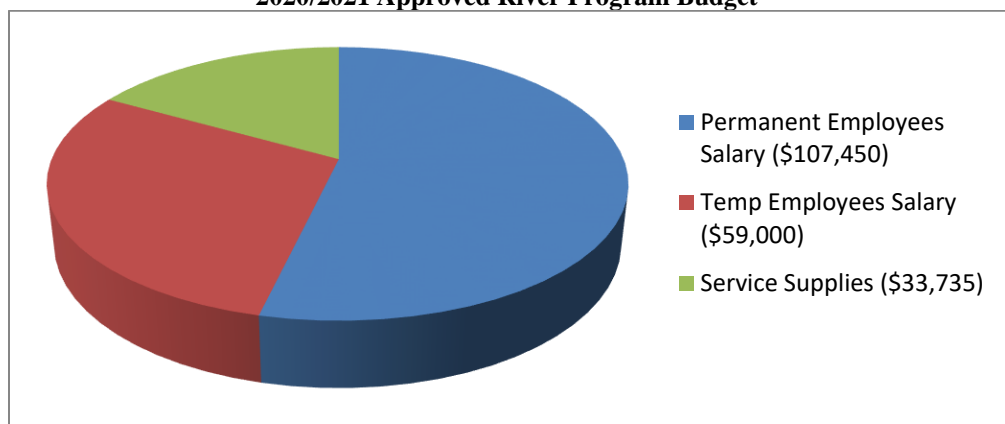
The budget for the Parks River Program is a non-general fund program. The primary source of funding since 1997 is a \$2.00 per guest user fee paid by permitted outfitters. Any fee change is subject to additional action by the Board of Supervisors. Any funding needs will take into consideration any changes which could increase or decrease the level of funding needed to implement the updated RMP. The table and charts below provide a snapshot of the River Trust Fund balances, the 2021/2022 approved budget, and the 2020/2021 Parks River Program budgeted and actual expenditures.

2021 was the first year that the County took over the collections and permitting for State Parks for commercial outfitter use only. By taking this task on, it was easier for the outfitters and the County increased revenue by \$14,843.

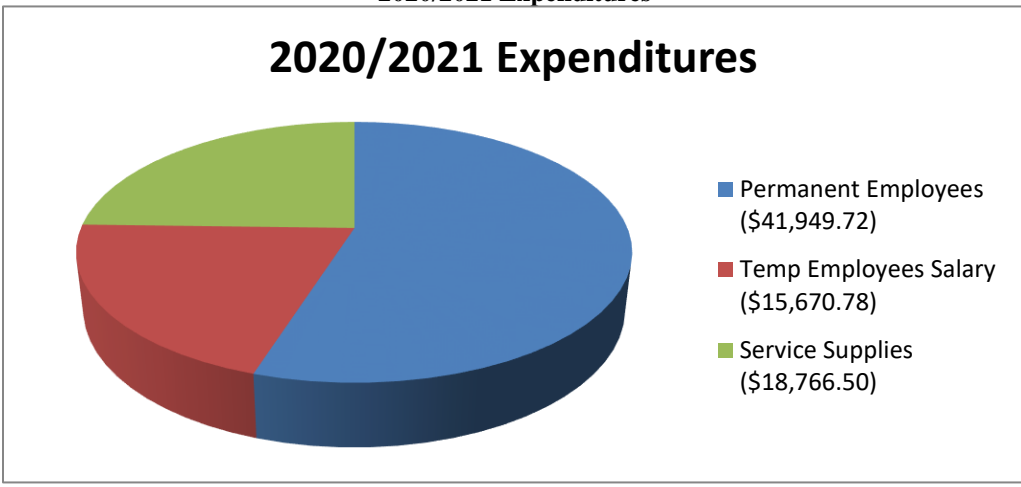
River Trust Fund Balance and Budget Summary

Fiscal Year 2020/2021	
Fund Balance as of July 1, 2020	\$217,332
Revenue (July 1, 2020 through June 30, 2021)	\$118,333
Expenditures	\$74,052
River Trust Fund balance as of June 30, 2021	\$261,612
2021/2022 Approved Budget	\$225,790

2020/2021 Approved River Program Budget



2020/2021 Expenditures



OTHER RMP OBSERVATIONS AND COMMENTS

Parks Staff was very fortunate to work closely with the Sheriff’s Office in 2021. The public has requested more of a presence from the Sheriff’s Office in the past. With the two departments working together, we were able to meet the needs of the public and support one another when

staffing was low. There were a few 911 calls that the Sheriff responded to and the parks staff was available to assist as directed by the Sheriff's Office. We really appreciate the dedication of Deputy Jon Densmore.

There are some goals identified in the updated RMP and in past annual reports that the County will be continuing to evaluate while also making efforts to implement. A few of those goals are working closely with the Sheriff's Office, to provide education in the C2G section of the river for tubers, to quantify use of the middle section, update all river kiosks, coordinate with the community on concerns and issues. River staff will continue educational efforts in 2022. Educational activities include stocking kiosks, boating safety information, life jacket requirements, public river access, private property locations, different recreation permit requirements, sanitation requirements, bathroom locations, and lists of approved outfitters.

PUBLIC COMMENTS

Public Comments

A comment was submitted regarding Pod size and the 5 minute between launches. I amended the report by adding all the elements of 6.2.2 for clarity.

Coloma/Lotus Advisory Committee

Karen Mulvany provided comments on the report that were very helpful. Some grammatical corrections and some that provided clarity for the reader.

One suggestion that I want to document so that we remember it, is on page 8 under Outfitter use. In 2023, we will review the RMP for any updates or changes. The Pod size issue will need to be discussed and regrouping of trips. Karen made a suggestion to limit regrouping of trips to the flatwater.

On November 30, 2021, the Annual Report was presented to the Coloma Lotus Advisory Committee for comments.

The discussion of water quality, the process and results were discussed.

A comment was made that the County taking over the State permits worked well for the outfitters and the outfitter meeting that we had was also helpful.

There were no suggested changes to be made to the report from this meeting.

Parks and Recreation Commission

CLOSING

In 2023, the County will review the River Management Plan. To date there are two issues we would like to document and evaluate:

- Pod size. We need to revisit the pod size and the changes over the years in the permits. Meaning that there used to be more smaller companies. But over the years as companies have sold, some companies hold more than one permit. That is why pod size is an issue. Also drought years, you only have water for a short period of time and everyone is trying to get down the same section when the water is up.
- Planning Commission's role. Evaluate what role the Planning Commission has and is it duplicative of the Board?

Overall, the County Park's River Program, in coordination with the BLM, State Parks, and El Dorado County Sheriff's Boating Units, was successful in managing the South Fork American River's whitewater recreation from Chili Bar Dam to Folsom Reservoir. The implementation of the County's 2018 revised River Management Plan.

Appendix A



**Water
Environmental
Testing Laboratory, Inc.**
California State Certified #2082

(530) 677-5776
5649 Milton Ranch Road, Shingle Springs, CA 95682

June 18, 2021

El Dorado County Parks & Recreation
CAO Parks
Placerville, CA 95667
Attn: Vicky Sanders / Twish Sweeney

Laboratory Reference #21-EDC-01.R

Sampled by: Prescott / Karsen

<u>Sample Location</u>	<u>Date</u>	<u>Time</u>	<u>Test Parameter</u>	<u>Test Result (MPN)</u>
Salmon Falls Grab Sample	6/14/21	1422	Total Coliform (ONPG) <i>E. coli</i> (MUG)	727.0 10.2
Greenwood Creek - Shore Grab Sample	6/14/21	1354	Total Coliform (ONPG) <i>E. coli</i> (MUG)	1553.1 17.3
Greenwood Creek - Transect Composite Sample (5)	6/14/21	1354	Total Coliform (ONPG) <i>E. coli</i> (MUG)	>2419.2 26.5
North Beach - Shore Grab Sample	6/14/21	1313	Total Coliform (ONPG) <i>E. coli</i> (MUG)	1119.9 19.9
North Beach - Transect Composite Sample (5)	6/14/21	1313	Total Coliform (ONPG) <i>E. coli</i> (MUG)	1046.2 20.1
Nugget - Shore Grab Sample	6/14/21	1235	Total Coliform (ONPG) <i>E. coli</i> (MUG)	1986.3 8.6
Nugget - Transect Composite Sample (5)	6/14/21	1235	Total Coliform (ONPG) <i>E. coli</i> (MUG)	1299.7 13.5
HLP - Shore Grab Sample	6/14/21	1335	Total Coliform (ONPG) <i>E. coli</i> (MUG)	980.4 24.9
HLP - Transect Composite Sample (5)	6/14/21	1335	Total Coliform (ONPG) <i>E. coli</i> (MUG)	>2419.2 37.9

All samples were analyzed using the chromogenic substrate coliform test (ONPG-MUG) in accordance with Standard Methods SM 9223 B. Bacterial densities (MPN) were calculated using Colilert Quanti-tray 2000.

Richard R. Blodgett, PhD

Public Health Epidemiologist
Water Quality Microbiologist

RRB/cb

Cc: El Dorado County Environmental Management Department

This report is applicable only to the sample received by the laboratory. The liability of the laboratory is limited to the amount paid for this report. This report is for the exclusive use of the client to whom it is addressed and upon the condition that the client assumes all liability for the further distribution of the report of its content.



**Water
Environmental
Testing Laboratory, Inc.**
California State Certified #2082

(530) 677-5776
5649 Milton Ranch Road, Shingle Springs, CA 95682

June 28, 2021

El Dorado County Parks & Recreation
CAO Parks
Placerville, CA 95667
Attn: Vicky Sanders / Brian Michaelson

Laboratory Reference #21-EDC-02.R
Sampled by: PreScott / Tim

<u>Sample Location</u>	<u>Date</u>	<u>Time</u>	<u>Test Parameter</u>	<u>Test Result (MPN)</u>
Salmon Falls Grab Sample	6/24/21	1400	Total Coliform (ONPG) <i>E. coli</i> (MUG)	1,732.9 21.8
Greenwood Creek - Shore Grab Sample	6/24/21	1335	Total Coliform (ONPG) <i>E. coli</i> (MUG)	>2419.2 131.3
Greenwood Creek - Transect Composite Sample (5)	6/24/21	1335	Total Coliform (ONPG) <i>E. coli</i> (MUG)	>2419.2 238.2*
North Beach - Shore Grab Sample	6/24/21	1240	Total Coliform (ONPG) <i>E. coli</i> (MUG)	>2419.2 151.5
North Beach - Transect Composite Sample (5)	6/24/21	1240	Total Coliform (ONPG) <i>E. coli</i> (MUG)	>2419.2 193.5
Nugget - Shore Grab Sample	6/24/21	1150	Total Coliform (ONPG) <i>E. coli</i> (MUG)	>2419.2 117.8
Nugget - Transect Composite Sample (5)	6/24/21	1150	Total Coliform (ONPG) <i>E. coli</i> (MUG)	>2419.2 45.9
HLP - Shore Grab Sample	6/24/21	1300	Total Coliform (ONPG) <i>E. coli</i> (MUG)	>2419.2 435.2*
HLP - Transect Composite Sample (5)	6/24/21	1300	Total Coliform (ONPG) <i>E. coli</i> (MUG)	>2419.2 410.6*

All samples were analyzed using the chromogenic substrate coliform test (ONPG-MUG) in accordance with Standard Methods SM 9223 B. Bacterial densities (MPN) were calculated using Colilert Quanti-tray 2000.

*This sample exceeds recommended health limits for swimming.

Richard R. Blodgett, PhD

Public Health Epidemiologist
Water Quality Microbiologist

RRB/cb

Cc: El Dorado County Environmental Management Department

This report is applicable only to the sample received by the laboratory. The liability of the laboratory is limited to the amount paid for this report. This report is for the exclusive use of the client to whom it is addressed and upon the condition that the client assumes all liability for the further distribution of the report of its contents.



Water
Environmental
Testing Laboratory, Inc.
 California State Certified #2082

(530) 677-5776
 5649 Milton Ranch Road, Shingle Springs, CA 95682

July 5, 2021

El Dorado County Parks & Recreation
 CAO Parks
 Placerville, CA 95667
 Attn: Vicky Sanders / Brian Michaelson

Laboratory Reference #21-EDC-03.R

Sampled by: Prescott / Tim

<u>Sample Location</u>	<u>Date</u>	<u>Time</u>	<u>Test Parameter</u>	<u>Test Result (MPN)</u>
Salmon Falls Grab Sample	7/01/21	1345	Total Coliform (ONPG) <i>E. coli</i> (MUG)	1,553.1 44.8
Greenwood Creek - Shore Grab Sample	7/01/21	1325	Total Coliform (ONPG) <i>E. coli</i> (MUG)	>2419.2 275.5*
Greenwood Creek - Transect Composite Sample (5)	7/01/21	1325	Total Coliform (ONPG) <i>E. coli</i> (MUG)	>2419.2 325.5*
North Beach - Shore Grab Sample	7/01/21	1200	Total Coliform (ONPG) <i>E. coli</i> (MUG)	>2419.2 461.1*
North Beach - Transect Composite Sample (5)	7/01/21	1200	Total Coliform (ONPG) <i>E. coli</i> (MUG)	>2419.2 410.6*
Nugget - Shore Grab Sample	7/01/21	1115	Total Coliform (ONPG) <i>E. coli</i> (MUG)	>2419.2 24.0
Nugget - Transect Composite Sample (5)	7/01/21	1115	Total Coliform (ONPG) <i>E. coli</i> (MUG)	>2419.2 19.7
HLP - Shore Grab Sample	7/01/21	1400	Total Coliform (ONPG) <i>E. coli</i> (MUG)	>2419.2 613.1*
HLP - Transect Composite Sample (5)	7/01/21	1249	Total Coliform (ONPG) <i>E. coli</i> (MUG)	>2419.2 517.2*

All samples were analyzed using the chromogenic substrate coliform test (ONPG-MUG) in accordance with Standard Methods SM 9223 B. Bacterial densities (MPN) were calculated using Colilert Quanti-tray 2000.

*This sample exceeds recommended health limits for swimming.

Richard R. Blodgett, PhD

Public Health Epidemiologist
 Water Quality Microbiologist

RRB/cb

Cc: El Dorado County Environmental Management Department

This report is applicable only to the sample received by the laboratory. The liability of the laboratory is limited to the amount paid for this report. This report is for the exclusive use of the client to whom it is addressed and upon the condition that the client assumes all liability for the further distribution of the report of its content.



Water
Environmental
Testing Laboratory, Inc.
 California State Certified #2082

(530) 677-5776
 5649 Milton Ranch Road, Shingle Springs, CA 95682

July 10, 2021

El Dorado County Parks & Recreation
 CAO Parks
 Placerville, CA 95667
 Attn: Vicky Sanders / Brian Michaelson

Laboratory Reference #21-EDC-04.R

Sampled by: Prescott

<u>Sample Location</u>	<u>Date</u>	<u>Time</u>	<u>Test Parameter</u>	<u>Test Result (MPN)</u>
Salmon Falls Grab Sample	7/09/21	1335	Total Coliform (ONPG) <i>E. coli</i> (MUG)	1,986.3 80.9
Greenwood Creek - Shore Grab Sample	7/09/21	1310	Total Coliform (ONPG) <i>E. coli</i> (MUG)	>2419.2 86.0
Greenwood Creek - Transect Composite Sample (5)	7/09/21	1310	Total Coliform (ONPG) <i>E. coli</i> (MUG)	>2419.2 64.4
North Beach - Shore Grab Sample	7/09/21	1220	Total Coliform (ONPG) <i>E. coli</i> (MUG)	>2419.2 131.3
North Beach - Transect Composite Sample (5)	7/09/21	1220	Total Coliform (ONPG) <i>E. coli</i> (MUG)	>2419.2 123.6
Nugget - Shore Grab Sample	7/09/21	0950	Total Coliform (ONPG) <i>E. coli</i> (MUG)	>2419.2 1986.3*
Nugget - Transect Composite Sample (5)	7/09/21	0950	Total Coliform (ONPG) <i>E. coli</i> (MUG)	>2419.2 166.4
HLP - Shore Grab Sample	7/09/21	1230	Total Coliform (ONPG) <i>E. coli</i> (MUG)	>2419.2 146.7
HLP - Transect Composite Sample (5)	7/09/21	1230	Total Coliform (ONPG) <i>E. coli</i> (MUG)	>2419.2 99.1

All samples were analyzed using the chromogenic substrate coliform test (ONPG-MUG) in accordance with Standard Methods SM 9223 B. Bacterial densities (MPN) were calculated using Colilert Quanti-tray 2000.

*This sample exceeds recommended health limits for swimming.

Richard R. Blodgett, PhD

Public Health Epidemiologist
 Water Quality Microbiologist

RRB/cb

Cc: El Dorado County Environmental Management Department

This report is applicable only to the sample received by the laboratory. The liability of the laboratory is limited to the amount paid for this report. This report is for the exclusive use of the client to whom it is addressed and upon the condition that the client assumes all liability for the further distribution of the report or its contents.



**Water
Environmental
Testing Laboratory, Inc.**
California State Certified #2082

(530) 677-5776
5649 Milton Ranch Road, Shingle Springs, CA 95682

July 20, 2021

El Dorado County Parks & Recreation
CAO Parks
Placerville, CA 95667
Attn: Vicky Sanders / Brian Michaelson

Laboratory Reference #21-EDC-05.R

Sampled by: Tim / Karsen

<u>Sample Location</u>	<u>Date</u>	<u>Time</u>	<u>Test Parameter</u>	<u>Test Result (MPN)</u>
Salmon Falls Grab Sample	7/19/21	1314	Total Coliform (ONPG) <i>E. coli</i> (MUG)	1,203.3 16.6
Greenwood Creek - Shore Grab Sample	7/19/21	1245	Total Coliform (ONPG) <i>E. coli</i> (MUG)	816.4 13.4
Greenwood Creek - Transect Composite Sample (5)	7/19/21	1245	Total Coliform (ONPG) <i>E. coli</i> (MUG)	980.4 5.2
North Beach - Shore Grab Sample	7/19/21	1110	Total Coliform (ONPG) <i>E. coli</i> (MUG)	>2,419.2 46.4
North Beach - Transect Composite Sample (5)	7/19/21	1110	Total Coliform (ONPG) <i>E. coli</i> (MUG)	>2,419.2 38.4
Nugget - Shore Grab Sample	7/19/21	0955	Total Coliform (ONPG) <i>E. coli</i> (MUG)	686.7 24.3
Nugget - Transect Composite Sample (5)	7/19/21	0955	Total Coliform (ONPG) <i>E. coli</i> (MUG)	1046.2 17.3
HLP - Shore Grab Sample	7/19/21	1135	Total Coliform (ONPG) <i>E. coli</i> (MUG)	1986.3 59.8
HLP - Transect Composite Sample (5)	7/19/21	1135	Total Coliform (ONPG) <i>E. coli</i> (MUG)	2419.2 78.9

All samples were analyzed using the chromogenic substrate coliform test (ONPG-MUG) in accordance with Standard Methods SM 9223 B. Bacterial densities (MPN) were calculated using Colilert Quanti-tray 2000.

Richard R. Blodgett, PhD

Public Health Epidemiologist
Water Quality Microbiologist

RRB/cb

Cc: El Dorado County Environmental Management Department

This report is applicable only to the sample received by the laboratory. The liability of the laboratory is limited to the amount paid for this report. This report is for the exclusive use of the client to whom it is addressed and upon the condition that the client assumes all liability for the further distribution of the report of its contents.



Water
Environmental
Testing Laboratory, Inc.
 California State Certified #2082

(530) 677-5776
 5649 Milton Ranch Road, Shingle Springs, CA 95682

August 2, 2021

El Dorado County Parks & Recreation
 CAO Parks
 Placerville, CA 95667
 Attn: Vicky Sanders / Brian Michaelson

Laboratory Reference #21-EDC-06.R
 Sampled by: TC

<u>Sample Location</u>	<u>Date</u>	<u>Time</u>	<u>Test Parameter</u>	<u>Test Result (MPN)</u>
Salmon Falls Grab Sample	7/26/21	1400	Total Coliform (ONPG) <i>E. coli</i> (MUG)	1,413.6 36.4
Greenwood Creek - Shore Grab Sample	7/26/21	1310	Total Coliform (ONPG) <i>E. coli</i> (MUG)	1986.3 67.0
Greenwood Creek - Transect Composite Sample (5)	7/26/21	1310	Total Coliform (ONPG) <i>E. coli</i> (MUG)	1732.9 79.4
North Beach - Shore Grab Sample	7/26/21	1145	Total Coliform (ONPG) <i>E. coli</i> (MUG)	1553.1 78.0
North Beach - Transect Composite Sample (5)	7/26/21	1145	Total Coliform (ONPG) <i>E. coli</i> (MUG)	1732.9 58.3
Nugget - Shore Grab Sample	7/26/21	1115	Total Coliform (ONPG) <i>E. coli</i> (MUG)	1299.7 9.8
Nugget - Transect Composite Sample (5)	7/26/21	1115	Total Coliform (ONPG) <i>E. coli</i> (MUG)	1299.7 25.9
HLP - Shore Grab Sample	7/26/21	1205	Total Coliform (ONPG) <i>E. coli</i> (MUG)	2419.2 71.7
HLP - Transect Composite Sample (5)	7/26/21	1205	Total Coliform (ONPG) <i>E. coli</i> (MUG)	1553.1 66.9

All samples were analyzed using the chromogenic substrate coliform test (ONPG-MUG) in accordance with Standard Methods SM 9223 B. Bacterial densities (MPN) were calculated using Colilert Quanti-tray 2000.

Richard R. Blodgett, PhD

Public Health Epidemiologist
 Water Quality Microbiologist

RRB/cb

Cc: El Dorado County Environmental Management Department

This report is applicable only to the sample received by the laboratory. The liability of the laboratory is limited to the amount paid for this report. This report is for the exclusive use of the client to whom it is addressed and upon the condition that the client assumes all liability for the further distribution of the report of its contents.



**Water
Environmental
Testing Laboratory, Inc.**
California State Certified #2082

(530) 677-5776
5649 Milton Ranch Road, Shingle Springs, CA 95682

August 11, 2021

El Dorado County Parks & Recreation
CAO Parks
Placerville, CA 95667
Attn: Vicky Sanders / Brian Michaelson

Laboratory Reference #21-EDC-07.R

Sampled by: TC

<u>Sample Location</u>	<u>Date</u>	<u>Time</u>	<u>Test Parameter</u>	<u>Test Result (MPN)</u>
Salmon Falls Grab Sample	8/9/21	1405	Total Coliform (ONPG) <i>E. coli</i> (MUG)	613.1 2.0
Greenwood Creek - Shore Grab Sample	8/9/21	1320	Total Coliform (ONPG) <i>E. coli</i> (MUG)	488.4 14.6
Greenwood Creek - Transect Composite Sample (5)	8/9/21	1320	Total Coliform (ONPG) <i>E. coli</i> (MUG)	488.4 25.0
North Beach - Shore Grab Sample	8/9/21	1156	Total Coliform (ONPG) <i>E. coli</i> (MUG)	613.1 18.7
North Beach - Transect Composite Sample (5)	8/9/21	1156	Total Coliform (ONPG) <i>E. coli</i> (MUG)	816.4 27.2
Nugget - Shore Grab Sample	8/9/21	1030	Total Coliform (ONPG) <i>E. coli</i> (MUG)	770.1 26.2
Nugget - Transect Composite Sample (5)	8/9/21	1030	Total Coliform (ONPG) <i>E. coli</i> (MUG)	547.5 26.9
HLP - Shore Grab Sample	8/9/21	1245	Total Coliform (ONPG) <i>E. coli</i> (MUG)	435.2 29.5
HLP - Transect Composite Sample (5)	8/9/21	1245	Total Coliform (ONPG) <i>E. coli</i> (MUG)	770.1 29.2

All samples were analyzed using the chromogenic substrate coliform test (ONPG-MUG) in accordance with Standard Methods SM 9223 B. Bacterial densities (MPN) were calculated using Colilert Quanti-tray 2000.

Richard R. Blodgett, PhD

Public Health Epidemiologist
Water Quality Microbiologist

RRB/cb

Cc: El Dorado County Environmental Management Department

This report is applicable only to the sample received by the laboratory. The liability of the laboratory is limited to the amount paid for this report. This report is for the exclusive use of the client to whom it is addressed and upon the condition that the client assumes all liability for the further distribution of the report of its content.



**Water
Environmental
Testing Laboratory, Inc.**
California State Certified #2082

(530) 677-5776
5649 Milton Ranch Road, Shingle Springs, CA 95682

September 2, 2021

El Dorado County Parks & Recreation
CAO Parks
Placerville, CA 95667
Attn: Vicky Sanders / Brian Michaelson

Laboratory Reference #21-EDC-08.R

Sampled by: Prescott

<u>Sample Location</u>	<u>Date</u>	<u>Time</u>	<u>Test Parameter</u>	<u>Test Result (MPN)</u>
Salmon Falls Grab Sample	8/30/21	1205	Total Coliform (ONPG) <i>E. coli</i> (MUG)	920.8 13.0
Greenwood Creek - Shore Grab Sample	8/30/21	1135	Total Coliform (ONPG) <i>E. coli</i> (MUG)	816.4 15.8
Greenwood Creek - Transect Composite Sample (5)	8/30/21	1135	Total Coliform (ONPG) <i>E. coli</i> (MUG)	920.8 22.6
North Beach - Shore Grab Sample	8/30/21	1049	Total Coliform (ONPG) <i>E. coli</i> (MUG)	1553.1 45.0
North Beach - Transect Composite Sample (5)	8/30/21	1049	Total Coliform (ONPG) <i>E. coli</i> (MUG)	1413.6 38.8
Nugget - Shore Grab Sample	8/30/21	1000	Total Coliform (ONPG) <i>E. coli</i> (MUG)	1732.9 12.0
Nugget - Transect Composite Sample (5)	8/30/21	1000	Total Coliform (ONPG) <i>E. coli</i> (MUG)	2419.2 17.1
HLP - Shore Grab Sample	8/30/21	1119	Total Coliform (ONPG) <i>E. coli</i> (MUG)	1119.9 13.4
HLP - Transect Composite Sample (5)	8/30/21	1119	Total Coliform (ONPG) <i>E. coli</i> (MUG)	1203.3 23.8

All samples were analyzed using the chromogenic substrate coliform test (ONPG-MUG) in accordance with Standard Methods SM 9223 B. Bacterial densities (MPN) were calculated using Colilert Quanti-tray 2000.

Richard R. Blodgett, PhD

Public Health Epidemiologist
Water Quality Microbiologist

RRB/sb

Cc: El Dorado County Environmental Management Department

This report is applicable only to the sample received by the laboratory. The liability of the laboratory is limited to the amount paid for this report. This report is for the exclusive use of the client to whom it is addressed and upon the condition that the client assumes all liability for the further distribution of the report of its content.



**Water
Environmental
Testing Laboratory, Inc.**
California State Certified #2082

(530) 677-5776
5649 Milton Ranch Road, Shingle Springs, CA 95682

November 8, 2021

El Dorado County Parks & Recreation
CAO Parks
Placerville, CA 95667
Attn: Vickie Sanders / Brian Michaelson

Laboratory Reference #21-EDC-09.R

Sampled by: Tim

<u>Sample Location</u>	<u>Date</u>	<u>Time</u>	<u>Test Parameter</u>	<u>Test Result (MPN)</u>
Salmon Falls Grab Sample	11/6/21	1250	Total Coliform (ONPG) <i>E. coli</i> (MUG)	648.8 24.3
Greenwood Creek - Transect Composite Sample (5)	11/6/21	1205	Total Coliform (ONPG) <i>E. coli</i> (MUG)	1553.1 61.7
North Beach - Transect Composite Sample (5)	11/6/21	1100	Total Coliform (ONPG) <i>E. coli</i> (MUG)	>2419.2 48.7
Nugget - Transect Composite Sample (5)	11/6/21	1000	Total Coliform (ONPG) <i>E. coli</i> (MUG)	1732.9 10.9
HLP - Transect Composite Sample (5)	11/6/21	1130	Total Coliform (ONPG) <i>E. coli</i> (MUG)	2419.2 146.7

All samples were analyzed using the chromogenic substrate coliform test (ONPG-MUG) in accordance with Standard Methods SM 9223 B. Bacterial densities (MPN) were calculated using Colilert Quanti-tray 2000.

Richard R. Blodgett, PhD

Public Health Epidemiologist
Water Quality Microbiologist

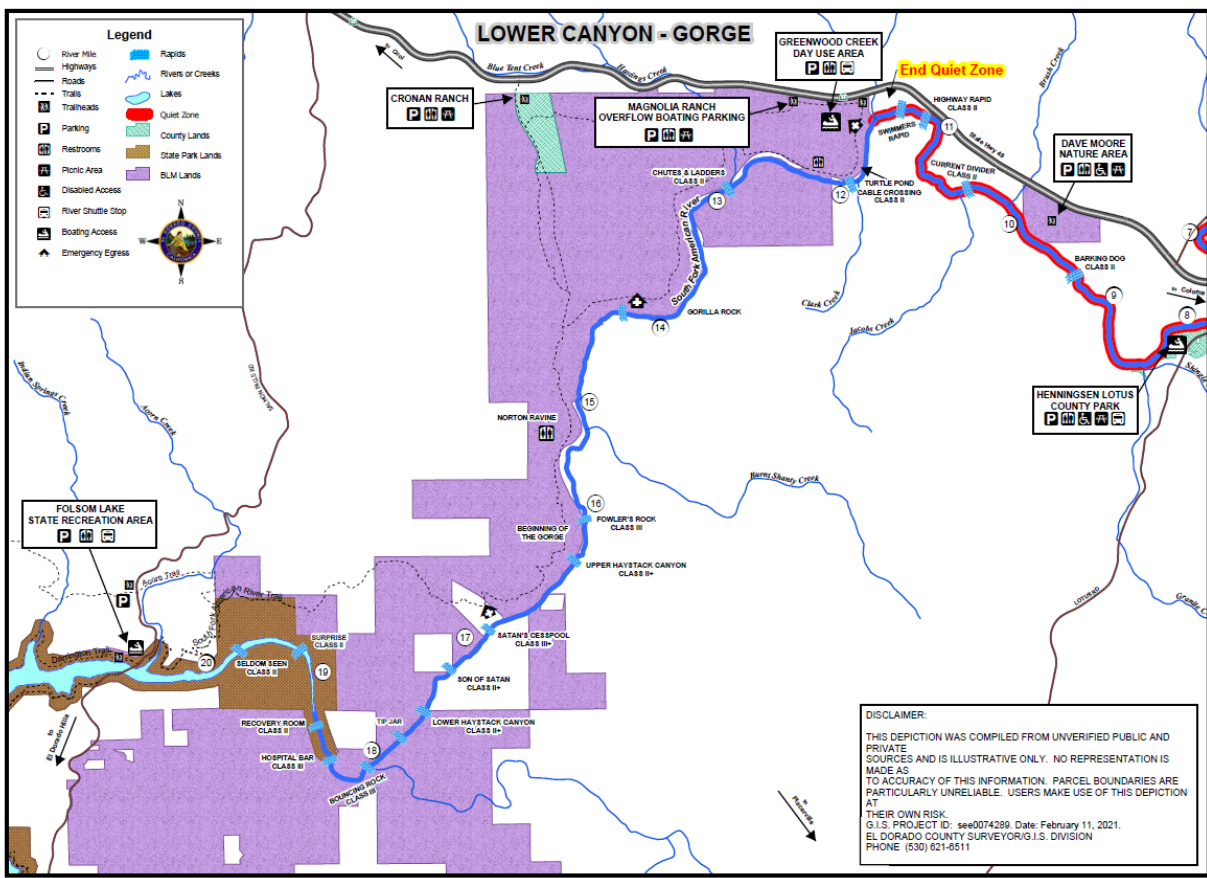
RRB/cb

Cc: El Dorado County Environmental Management Department

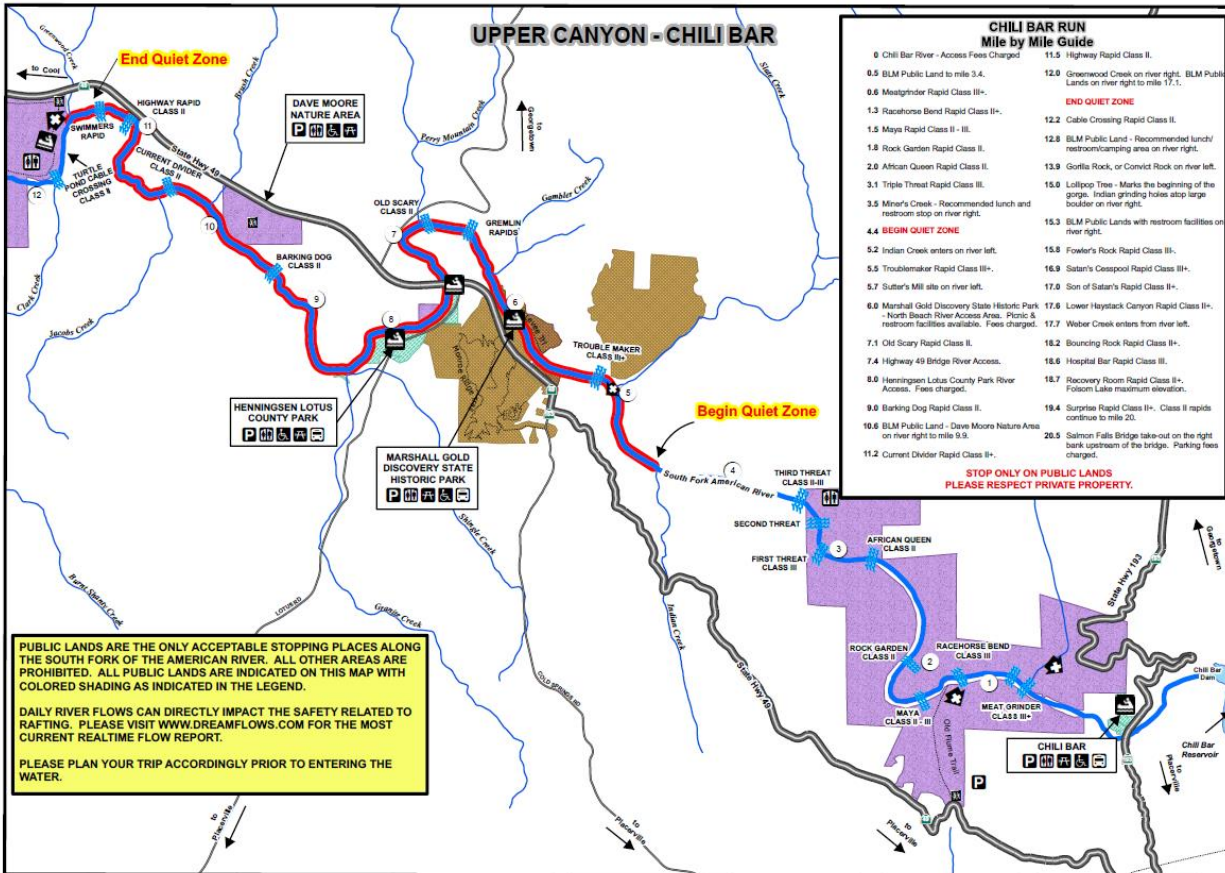
This report is applicable only to the sample received by the laboratory. The liability of the laboratory is limited to the amount paid for this report. This report is for the exclusive use of the client to whom it is addressed and upon the condition that the client assumes all liability for the further distribution of the report of its contents.

Appendix B

SOUTH FORK AMERICAN RIVER

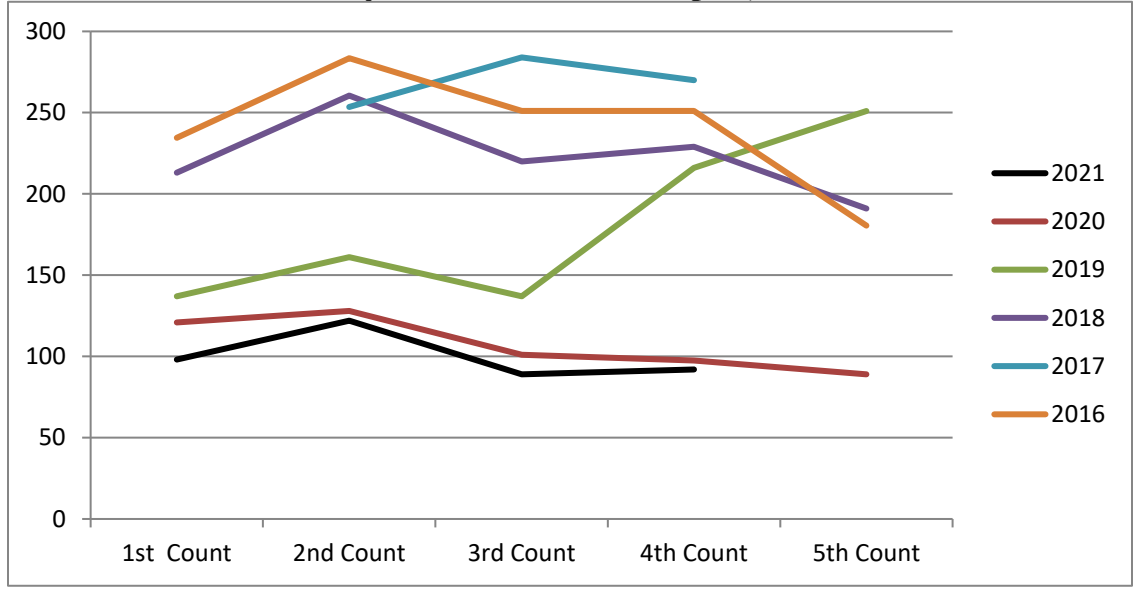


SOUTH FORK AMERICAN RIVER



Appendix C

Boat Density 2016-2021 Fowlers Rapids, Lower River



Appendix D
2021 Commercial Outfitter Use

2020/2021 Season Comparison			
Outfitter	2020 TOTALS	2021 TOTALS	Percentage Change
All Outdoors	1991	5952	198.95%
American River Touring Assn.	451	954	112%
ASI, Peak Adventures	0	114	#DIV/0!
Action Whitewater Adv.	5886	13805	135%
American Whitewater Exp.	10162	16510	62.47%
Beale AFB	0	0	N/A
Beyond Limits Adventures	82	946	1054%
Current Adventures	206	427	107%
Calvary Chapel	0	0	N/A
California Canoe and Kayak/ California Watersport Collective	0	0	#DIV/0!
Chico Adventure Outings	0	35	#DIV/0!
Environmental Traveling Comp.	258	953	269%
Feather River College	0	0	N/A
Friends of the River	0	0	N/A
H2O Adventures	1946	4153	113%
Healing Waters	0	0	N/A
Inspiring Connection's Out.	0	0	N/A
Mother Lode River Trips	100	622	522%
OARS	2110	4599	118%
OA UC Davis	0	0	#DIV/0!
Rise Up River Trips	6	239	3883%
Rock n Water	895	2721	204%
River Runners Inc	2181	2983	37%
Sierra Nevada College	0	30	#DIV/0!
Sierra Whitewater	2344	3189	36%
Travis AFB	0	0	N/A
Tributary Whitewater Tours dba Raft California	4645	5980	29%
Tahoe Whitewater Tours	235	182	-23%
WET River Trips	1926	1615	-16%
Whitewater Excitement	2493	5093	104%
TOTALS	37917	71102	88%