



Rubicon Trail 2022 Annual Report

Report of maintenance activities, volunteer projects and summary of the 2022 Rubicon season.

Rubicon Trail 2022 Annual Report

The goal of this document is to inform the public of the accomplishments of the volunteers, users, El Dorado County (County) and other agencies and departments in our efforts to fulfill the direction from the El Dorado County Board of Supervisors. The report documents the activities, good and bad, on the trail and what needs to be addressed in the future. This provides a record and history for the El Dorado County Parks Division (Division). With the support of the community and the support of the Board of Supervisors the Rubicon Trail (Rubicon) is in great condition and we continue to meet the conditions of the USFS easement.

Adopt a Trail Program

Fifteen different segments were established in 2014 and adopted. As of 2019 there are now sixteen segments in El Dorado County.

2022 had a few groups that were able to get to the Adopt a Trail (AAT) segments. Staff will reach out to each group in 2023 to see if there is an interest in keeping their segment or not. Stay tuned as there may be some segments available in 2023.

A few AAT groups were unable to inspect this year. The ones that were not have been completed by county staff as noted below. Currently there are two segments available, if you or anyone you know is interested in adopting a segment, please contact our office at 530-621-5554.

ADOPT-A-TRAIL 2022

Segment #	Segments	Length of Segment	Adopted by
1	Francis Cow Camp - Airport Flat Turnoff to Wentworth Springs City	6.07 miles	Mud Suckers 4WD
2	Wentworth - Wentworth Springs City to Junction Loon Lake Intertie	1.84 miles	Madhatters 4x4
3	Loon Lake Intertie #1 - Kiosk to Whale Bone	1.64 miles	Georgetown Stump jumpers
4	Loon Lake Intertie #2 -Whale Bone to Tie-in.	0.51 miles	Auburn Jeep Club
5	Ellis Creek - Intertie to 1.6	1.0 miles	ECV 86
6	Ellis Creek B- 1.6 to Below Walker Rock	0.67 miles	Ruffstuff
7	Walker Rock - Walker Rock to Benchmark above Walker Hill	.70 miles	Sierra Treasure Hunters 4 Wheel Drive Club
8	Soup Bowl - Crest above Walker to Winter Camp	.40 miles	EIDorado Rock Crawlers (EDRC)/ Daystar Products
9	Little Sluice - Winter Camp to Property Line - Spider	.5 miles	SLO Crawlers
10	Arnold's Rock - Property Line - Spider to Egg Rock (Indian Bypass)	.78 miles	Russ and Janet Watkins/MTA
11	Old True Big Sluice - Old Sluice turnoff to Egg Rock	.60 miles	Placer County Crawlers
12	Mechanic's Pit - Egg Rock to Buck Island Dam	.72 miles	
13	Buck Island - Buck Island Dam to Dive off	.53 miles	
14	Big Sluice - Dive off to Sawtooth	.48 miles	Jeep USA
15	Rubicon Bridge - Sawtooth to Rubicon Bridge	.32 miles	MetalCloak/NorCal 4 wheelers
16	Rubicon Springs - Rubicon Bridge to Property Line	1.02 miles	Jeepers Jamboree

Yellow=vacant segment

The sediment removed in 2022 was 13.04 cubic yards which was the result of 527 buckets worth of sediment removed by volunteers and staff. You can see the history below. Sediment amounts are low after another dry year.

Year	Number of Buckets	Cubic Yards of Sediment Removed	Water Year Type
2014		5.51	Drought year
2015	620	15.52	Drought year, warm temps, lack of snow pack
2016	436.5	10.91	Average snow pack, large rainfall amounts in fall
2017	678.50	16.96	Well above average
2018	556	13.90	Below normal
2019	321	8.93	Large snow pack, late melt. Late snow November.
2020	238	5.95	
2021	168	4.2	Below normal
2022	527	13.04	Below normal

Below is a recap of all sixteen segments as reported by the Adopt a Trail volunteers.

1. The Francis Cow Camp segment was adopted by Mud Suckers 4WD. This segment of the trail is from the Airport Flats turn off to the Wentworth Springs campground. All BMPs in this segment were inspected by EDC. The grant for 2022 was written for this area. The county will be doing maintenance in 2023.

The assessment for this segment was completed El Dorado County Parks, Brian Bettencourt.

No new photos available.

2. The Wentworth Springs segment of the trail was adopted by Madhatter's 4X4 club. This segment of the trail is from the Wentworth Springs campground to the Intertie. Madhatter's removed 96 five-gallon buckets that equate to 2.38 cubic yards. The improvements on this segment of the trail are functioning as designed.

The assessment for this segment was completed by Madhatter's 4x4 club.



3. The Loon Lake Intertie #1 segment from the Kiosk to Whale Bone was adopted by Georgetown Stump Jumpers. With some rock drops from the previous helicopter project, the top end of this segment was in great shape. 124 five-gallon buckets were removed from this segment which equate to 3.07 cubic yards.

The assessment for this segment was completed by Georgetown Stump Jumpers and El Dorado County Parks, Brian Bettencourt.

No new photos available.

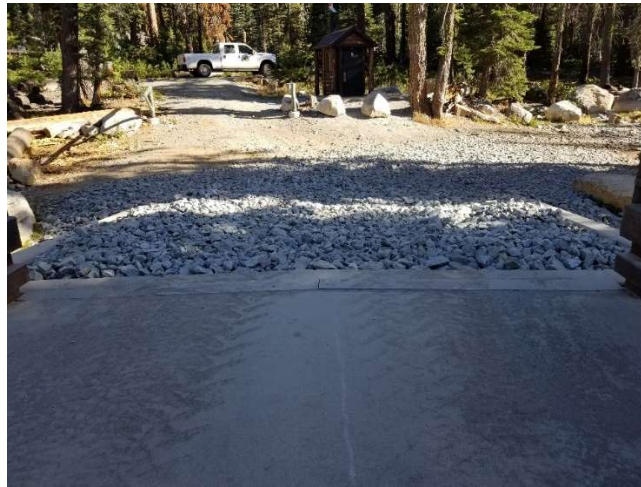
4. The Loon Lake Intertie #2 segment from the Whale Bones to the Intertie. This segment was adopted by Auburn Jeep Club (AJC). AJC was not able to get to the trail this season for an assessment. Parks inspected and removed 69 buckets of sediment which equates to 1.71 cubic yards.

The assessment for this segment was completed by El Dorado County Parks, Brian Bettencourt.



5. The Ellis Creek segment of the Rubicon Trail is from the Intertie to what we here at the County call 1.6. This segment was adopted by ECV who moved from their segment from Mechanics Camp. ECV's maintenance trip was unfortunately interrupted by the Mosquito fire closure. They were able to put eyes on their new section for next year and we are looking forward to working together in the future. There were 79 five-gallon buckets removed from this segment that equates to 1.96 cubic yards. County staff was able to use a backhoe on this section to help reestablish some of the Rock Energy Dissipators (RED's) and bring the rock at the Ellis Creek bridge abutments back up to grade. The use of the backhoe explains a higher-than-normal bucket count in the area but was a great improvement to the features.

The assessment for this segment was completed by El Dorado County Parks, Brian Bettencourt.



6. The “new” segment is known as 1.6 to Walker and was a segment was split from the original Ellis Creek segment. adopted by Ruff Stuff. This segment was adopted by Ruff Stuff. Unfortunately, Russ Stuff was unable to get to the trail this season for an assessment. County staff removed 104 buckets of sediment from this segment which equates to 2.57 cubic yards.

The assessment for this segment was completed by El Dorado County Parks, Brian Bettencourt.



7. The Walker Hill segment is from below Walker Rock to the Benchmark above Walker Hill. This segment was adopted by Sacramento Treasure Hunters. This area had 55 buckets removed this year equating to 1.36 cubic yards of sediment. This segment looks good as the County did improvements to Walker Hill.

The assessment for this section was completed by El Dorado County Parks, Brian Bettencourt



8. The Soup Bowl segment is from the crest above Walker Hill to Winter Camp. This segment was adopted by El Dorado Rock Crawlers (EDRC)/ Daystar Products. They were able to remove a fallen treetop from the drainage at Soup Bowl and reopen the outlet ditch. All BMP's in this segment are functioning as designed.

The assessment for this segment was completed by EDRC / Daystar Products and El Dorado County Parks, Brian Bettencourt.



9. The Little Sluice segment goes from Winter Camp to the property line at Spider Lake. This segment was adopted by SLO Crawlers and they have performed maintenance to this area for several years. Winter Camp is in this segment. SLO Crawlers were unable to get to the trail this season for an assessment. BMP's in this section are functioning as designed. The drainage on west of Wintercamp was reestablished before the rains.

Trail assessment was completed by El Dorado County Parks, Brian Bettencourt.

No new photo available

10. The Arnold's Rock segment is located from the property line at Spider Lake to Egg Rock (Indian Bypass). This segment was adopted by Russ and Janice Watkins with the help of Mountain Transit Authority (MTA). Janice and crew were unable to get to the trail this season for an assessment.

Trail assessment was completed by El Dorado County Parks Brian Bettencourt.

No new photo available

11. The Old True Big Sluice segment is from the Old Sluice turn off to Egg Rock. This segment was adopted by Placer County Crawlers. There are no RED's in this segment. This segment of the trail looks great and all BMP's are functioning as designed.

Trail assessment was completed by El Dorado County Parks, Brian Bettencourt.

No new photos available.

12. The Mechanic's Pit segment is from Egg Rock to the Buck Island Dam. This segment is open for adoption. BMP's in this section are functioning as designed. Bio-response was also applied to areas as needed.

Trail assessment was completed by El Dorado County Parks Brian Bettencourt.

No new photos available

13. The Buck Island segment is located from Buck Island Dam to the Dive Off. This segment is open for adoption. Rock was added to this segment as part of the helicopter project. See County maintenance activities.

Trail assessment for this segment was completed El Dorado County Parks, Brian Bettencourt.

No new photos available

14. The Big Sluice segment is located from the Dive Off to Sawtooth. This segment was adopted by Jeep USA. County staff along with the help of Shawn Gulling (Jeep USA) and Mark (RSSI caretaker) were able to rebuild the gabion on sawtooth to aid in safety and avoiding future erosion.

The assessment for this segment was completed Jeep USA Shawn Gilling and El Dorado County Parks, Brian Bettencourt.



15. The Rubicon Bridge segment is from Sawtooth to the Rubicon Bridge. This segment was adopted by Metal Cloak. The County assessment of this segment includes installing new BMP's at Scout Hole. A lead off ditch is needed to get the water off the trail where the spring flows and keeps this area wet year-round.

The assessment for this segment was by El Dorado County Parks, Brian Bettencourt.

No new photos available.

16. The Rubicon Springs segment is located from the Rubicon Bridge to the County Line. This segment was adopted by Jeepers Jamboree. Jeepers Jamboree had a work party weekend before the Jamboree weekend.

The trail assessment for this segment was completed by El Dorado County Parks, Brian Bettencourt.

No new photos available.

2022 Project List

The 2022 project list was on our website and projects were claimed by groups, clubs, and individuals. The highlighted projects were completed in 2022.

2022

Project	Project Description	Justification	Project Claimed By
Kiosk Volunteer	Volunteer at any of the Trailheads to provide education to the users	Education	
Bathroom Door springs (kiosk)	Install springs to Loon Lake restroom	Door is caught in the wind and are being bent.	AJC
Trail Delineation	Delineate the trail, working with county staff to delineate the trail in areas.	To keep the trail users on the trail and not creating new trails.	Completed by County
Loon Lake Restroom	Paint the restroom at Loon	Maintenance	Green Acres
Sawtooth Gabion	Add rock to existing gabion, build a new gabion above existing gabion	Maintenance / Preventative Maintenance	Completed by County
Buck Island by Damn	Replace Sunroof	Broken	To be done County
Big Sluice	Remove Tree		Completed by Volunteers
Intertie S turn	Add Carcinites to illegal bypass	Was not completed and will be removed from the list	

Below is the list of projects for 2023. Even though staff is on the trail weekly during the season, there may be projects that a user may see that needs to be done. If you have a project that you would like to do, please call the Parks Division at 530.621.5554 to discuss. We are open to ideas or suggestions.

2023

Project	Project Description	Justification	Project Claimed By
Kiosk Volunteer	Volunteer at any of the Trailheads to provide education to the users	Education	
Bathroom Door springs (kiosk)	Install springs to Loon Lake restroom	Door are caught in the wind and are being bent.	AJC
Wentworth Springs Kiosk	Repaint and clean up the area	Lots of 5 gallon buckets broken that need to be removed and the general area needs to be cleaned up	

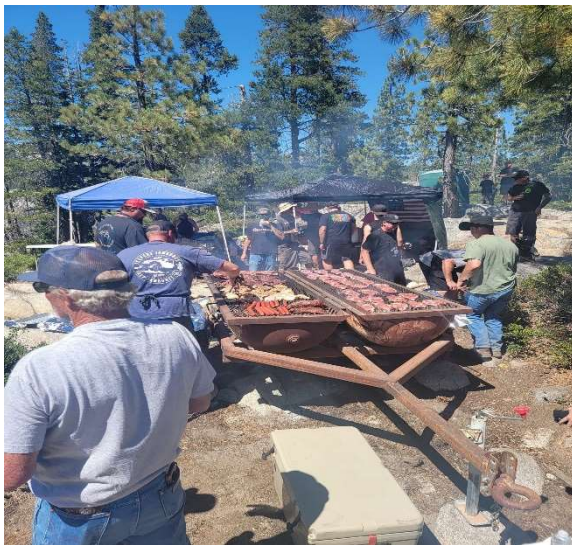
Volunteers

Volunteer Support

We are always looking for ways to be efficient and looking at the what if scenarios. The what if I could not get off my mind this summer was “What if Brian gets sick or wins the lottery what would we do?” Risk Management has a program where a volunteer can be approved to drive county equipment. We have been fortunate to have several volunteers that have been approved to drive county equipment and are skilled to drive. Some of those volunteers can handle the pumper truck. Once again, the community comes together for the best interest of the Rubicon. We can’t thank enough the community and volunteers for their support and time.

Beef and Boots

With the great help of the community as well as Tim & Heidi Green (Beef & Boots) the event was a huge success. The Loon Lake restrooms were repainted thanks to Nordell Painting. Jim Ingram carvings created an amazing masterpiece. The bench now resides at the Loon Lake kiosk and was dedicated to Mark Smith. Jason Warden and crew provided the cooking duties. Steaks supplied by Tim & Heidi Green (Beef and Boots). There was Bio Response applied by many volunteers to remove any oil spills on the granite. District IV Supervisor Lori Parlin was in attendance along with Irene Smith and family.



County Activities

Staffing

The County and the Rubicon community are so lucky to have Brian Bettencourt on the Rubicon Trail providing maintenance and pumping activities. This year Brian was fortunate to have Cory Pence by his side as they completed weekly pumping and maintenance. Once again, I can't express enough how fortunate we all are to have their experience and expertise on the trail.

In July, the Board of Supervisors approved another Parks and Trails Maintenance position to assist with the Rubicon and to assist with parks and trails properties. This is significant for sustainability of the Rubicon for the future. We need more than one employee that knows how to pump the Rubicon rest stops. We hired Nicholas Howle in November and he had a few trips on the trail before the weather hit.

The position of Parks Program Coordinator has been filled by Tim Canavarro in November and we are excited to having him on board.

Pumping and Restrooms

Brian and Cory pumped the restroom every week. We did miss one week which was during the Jeep Jamboree large event. The pumper truck broke down on Tuesday when Brian was heading into pump. The truck was towed to Stretch Fab for evaluation. We found out on Wednesday the truck would not be ready until the following week. We did have the option of taking the pump trailer in to service the restrooms on Thursday or Friday, but the decision was made that we would be going in with Jamboree traffic and the trip out against the traffic would be too much. We took the trailer in the following week.

A couple of the Rubicon rest stops have been hit by vehicles which have caused cracking in the siding. We will monitor the units for repairs. Please watch the annual Rubicon project list as when they have repairs, we will add them to the list.

Once again, a big shout out and thank you to Glenn, Rubicon Trail Foundation (RTF) Mid-Trail staff for assisting with the stocking and cleaning of the restrooms. It is very helpful to have someone assisting with the restroom between our trips out. Thank you, thank you.

Events

In 2020, El Dorado County was asked to have a meeting at the Reno Motorsports Show. But with COVID the event had been canceled. In 2022, we were finally able to have the meeting. The meeting was scheduled on March 26, 2022, at 9:00 before the show started. The County was given a document that had a list of questions for each agency. The questions were not the same for all agencies, so the questions were sent

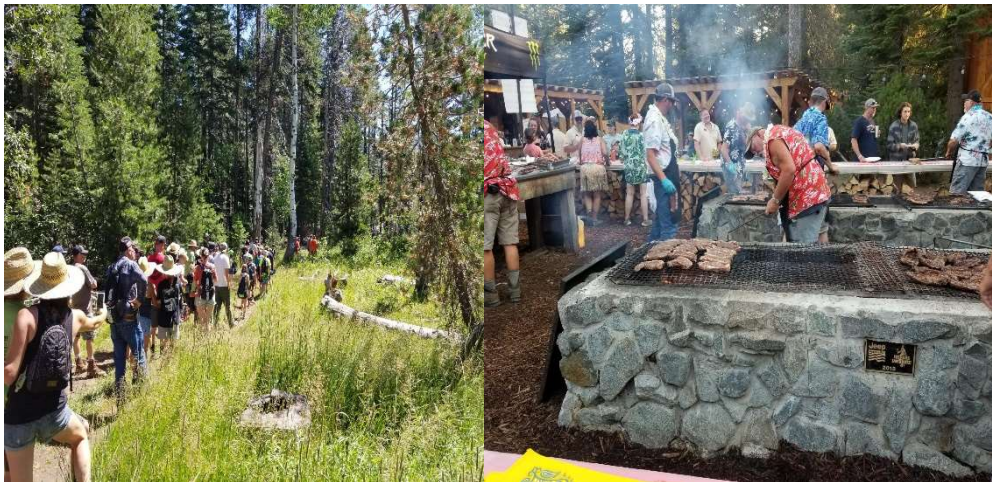
out to the agencies and the questions answers were provided at the meeting. The questions and answers attached, (Attachment A). The intent of the meeting was to educate users across State lines on the Rubicon. There were about 25 people in attendance, and I feel the meeting was very successful and informative.

County staff attended the event at Thompsons Toyota and Jeep in 2022. The event had various vendors, County Parks, County Sheriff and other organizations. There was a great turnout and a fun event for all.

Once again, we were at the El Dorado County Fair on June 16th -19th. It was a wonderful event and nice to be back to normal. A big thank you to Laura Butcher from Tread Lightly who attended the fair with us and was such a help at the County booth. It is so nice to have such great partners. We assisted Jeep Jamboree with the Rubicon Experience. It was well attended and a great event for everyone. We thank all the drivers for putting on a great show for the crowd. Thank you to Jeep Jamboree and Russell Motorsports for sponsoring the event.

Staff attended Jeep Jamboree to assist with Camp Rubicon.

The kids in attendance were trained on trail BMP's (rock energy dissipators). There was a nature walk showing the history of the area along with features of Rubicon Springs. Some activities were hunting arrowheads a crawdad catch and the ever popular ice cream eating contest.



Maintenance

The helicopter project was completed in May. The weather went from snowing one day to sunny the next. But the weather did not slow us down. We could not have completed this project without the amazing volunteers, Mike Elrod, Tim Wardlow, Tim Green, Eliot Dodds. There was a total of 1,066,000 lbs./533 tons of rock dropped on the trail. We had a lot on the list to accomplish and we achieved everything on the list this time. Here are a few locations but certainly not all locations:



We started at the spillway blocking and directing the traffic to the trail. Large boulders were dropped right at the spillway on the left to direct users to the right. Many are going straight along the creek which is off trail. Three loads of very large boulders were dropped at this location.



Hole at the top of Hot Rock to armor the soils.



Bottom of Whale bones-this drop was getting dug out so we dropped large rock

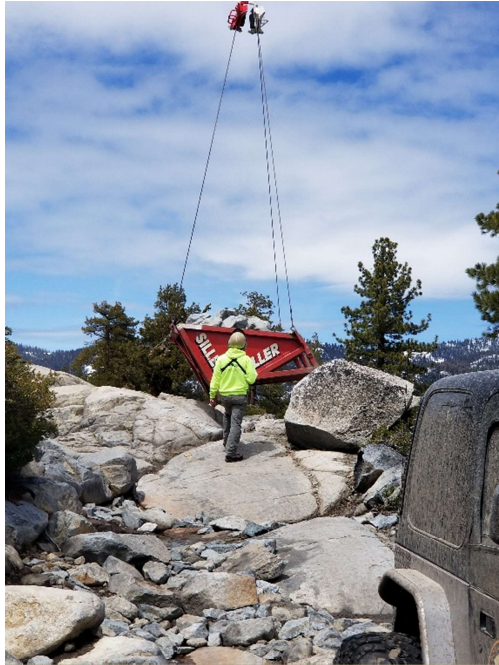


Cell phone tree gabion



Cell phone tree gabion continued.

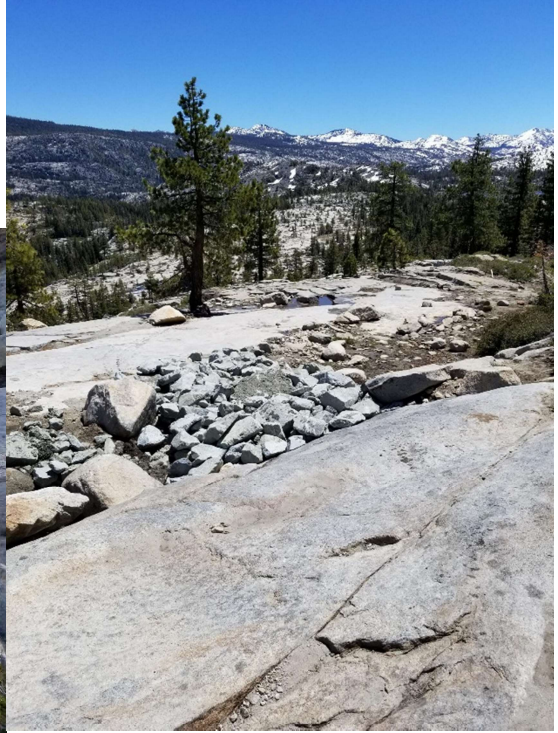
A gabion was installed at Cell Phone tree to protect the slope and large rock was added on top. This area has seen increased use and lots of off trail travel and parking due to the cell phone access. The area was blocked with trees to delineate the trail and hopefully stop the off-trail travel. Since that area was identified with signage many users stop to get on social media or whatever. Signage for this area was discussed at the Rubicon Oversight Committee many years ago and we felt it was a good idea. But it has proven that identifying the location made the area over used and abused. The County will be taking the signage down. There is no additional signage planned for the trail. In the past all signage has been vetted through the Rubicon Oversight Committee. Since the committee was not appointed by the Board of Supervisors it will no longer be meeting. Any new or additional signage needs to be approved by the county when it is on the trail, or it will be removed.



Area after Spyder Lake near Mudd Lake-Rock was placed to assist with the drainage



Arnolds Rock-Rock was placed to make it easier for the pumper truck



Indian Bypass-Rock was added to assist with the drop off and protect the soils



Area before Buck Island-This area is seeing a lot more off trail travel. We added rock to the climb left of the V-Notch and blocked some user created bypasses with logs



Before SMUD bypass at Buck Island-There were some large rock drops in this area from the helicopter operation to help in the hardening of the trail.



Coutrin's Corner-This is not identified on our map as a location, but this is what I have heard it referred too. We added additional rock to assist with the corner as many get hung up in this location and we were seeing a lot more erosion from tire spins



Bottom of Scout Hole V Notch- Added rock at a difficult part of the trail. There is a tree on the right and the rocks on the left make it difficult to get through. Users have chosen to go around the tree on the far right which is off trail. Rock was added to make it easier to pass and keep them on the trail.



Climb before the spring-These pictures are not the best but it is on the rock climb before you drop into the springs after squeeze rock. The V Notch in this location was causing users issues if they did not get the exact line they would tip and cause vehicle damage. We added large boulders at the bottom and large rock in the notch in the hopes it will assist the user and keep them from digging the soils at the bottom.

We had two Department of Transportation employees who worked the hook this year and we could have never done the delineation of the trail without them and their families. Cameron and Forrest went home one night after a long day and got their rigs. The following morning Cameron's father and brother showed up to trim logs and do the rigging at Ellis Creek Campground. We moved thirty-two logs in an hour and a half delineating the trail.

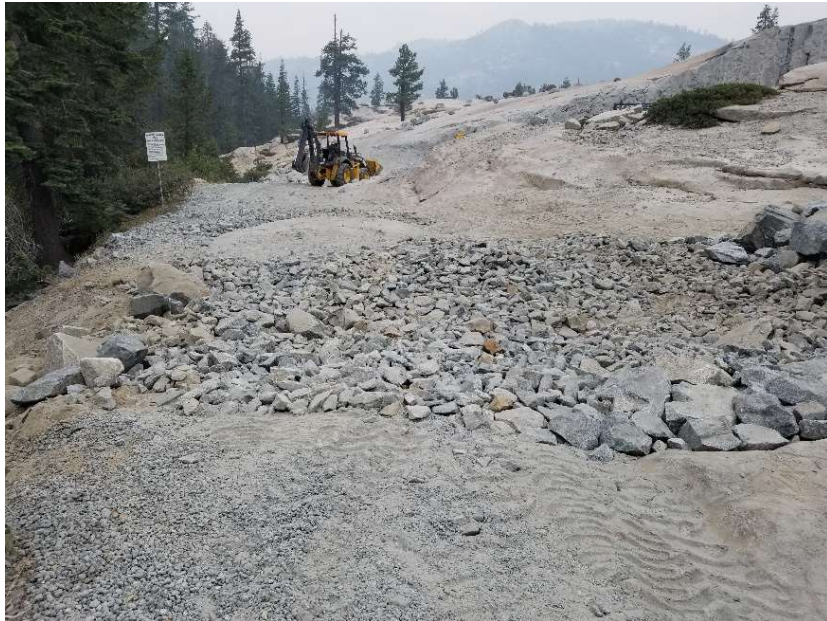


Trail delineation at Whale Bones

In July, staff along with Jeep USA, built a gabion at Sawtooth. This was on the project list for a few years and could not wait anymore.



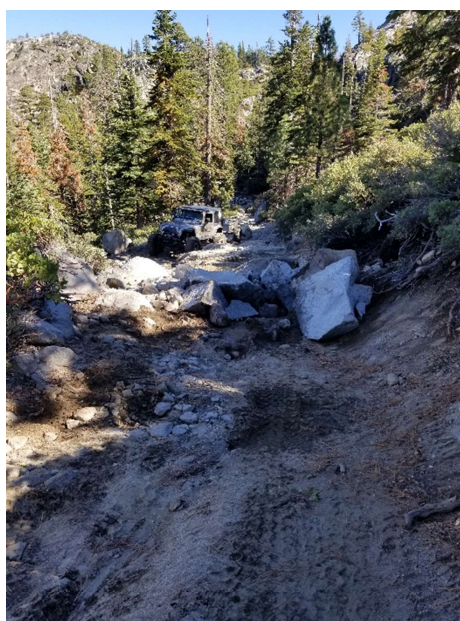
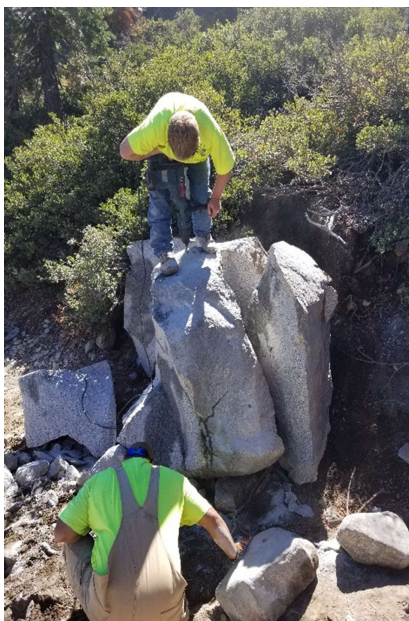
Loon Lake Kiosk



In September staff worked on the drainage at the kiosk. There is a water bar at the bottom near the spillway that was re-established. Some rock armoring was done near the parking at the SMUD facility and water bars were installed coming down from the dam to assist with drainage

Big Sluice

There was also a large rock that slid its way into the trail just above the “Hairpin” along with the help of the DOT Bridge crew and staff we were able to pop the rock into manageable pieces that created a nice water bar/diversion.



Placer County

El Dorado County staff with the assistance of Doug Veerkamp General Engineering provided maintenance on the Tahoe side of the trail from the Tahoma staging area about a mile in on the trail. Working with the Lake Tahoe Basin Management Unit and following the assessment provided by Wil Harris of California Geological Survey a few years ago, twenty-four water bars were installed.



Photos are of work in progress.

County Contracts

There were many maintenance projects on the trail in 2022. Some of those services require outside contracts. Details on the maintenance projects are in the County maintenance section of this report. The following is the vendor, amount of the contracts and the amount spent:

Doug Veerkamp General Engineering Helicopter support - \$33,365.00

Doug Veerkamp General Engineering asphalt repair to Wentworth Springs - \$49,350.00

Doug Veerkamp General Engineering Excavator for Tahoma side of the trail - \$24,660

Siller Helicopter - \$368,920.00

Inspections

Three inspections were completed in 2022, March 11th, April 29th and May 3rd. None of the spring inspections resulted in closure. It was a dry year with low snow and low precipitation. (See Attachment B.) One additional inspection was completed on December 28th for the 2022/2023 inspection year. The region had a large atmospheric river event forecast for the New Years weekend. The resulting inspection did not meet the numeric water depth limits for closure. With that said, the County initiated a temporary closure in advance of the forecast event as the inspection showed areas of the Rubicon where bare soil was exposed with the inspectors were breaking through the snow to surface flows. The temporary closure was initiated to protect the resource from user impacts during the forecast event and to protect the public from possible storm related damage to the Rubicon and nearby roads due to the nature of the event. The Closure will be lifted as soon as the weather pattern changes to allow inspection staff to reach the sites safely.

One additional inspection was completed in December. This inspection was completed not because of the conditions of the USFS easement but because of an incident at Wentworth Springs where users were stranded after a forecasted snow storm event. Our job is to protect the resources and the trail. The social media posts contained conflicting statements about the rescue effort and possible impacts to the travel way, that once the people were out safely it warranted an inspection. At the time of the inspection the visible resources in the area appeared fine with no apparent off-trail travel. A larger issue was the hiring of a loader operator to remove snow from the roadway. The County requires an encroachment permit to remove snow from a county road. In addition to possible damage to the roadway, altering the snow from its natural state with a loader on the trail changes the designation of winter travel for the Rubicon Trail. As the county protects this trail, the community must remember what we all went through twelve years ago to keep this trail open.

Hazardous Material Removal

There was no hazardous material to remove from the Wentworth Spring Campground or Tahoma Staging Area. 55 gallons of hazardous waste was removed from Loon Lake, Ice house and Union Valley.

Education

The campaign for 2023 is spills. We will once again be at the kiosk handing out spill kits and educating on how to use them. We will also try to put staff at the staging area in Tahoma to address users from the Nevada side.



Law Enforcement

2022 Rubicon Trail Patrol Report Prepared by Sergeant Paul Hadjes

The 2022 Summer Season Rubicon Trail patrol began on May 21, 2022 and ran until the September 05, 2022. During the operational period of May 21 thru September 05, 2022. EDSO engaged in patrol operations every weekend, Friday thru Sunday and extended those hours on several event and holiday weeks. Most of the contacts involved resource damage in areas on and adjacent to the trail, trespassing, and registration issues. We responded to several calls which ranged from lost/injured persons to disabled vehicles as well as locating a criminal suspect our patrol division was looking for on the Rubicon Trail. Deputies assisted in medically evacuating one person with critical injuries.

Measurable totals include:

- 1,116 hours of Deputy Hours on the trail
- 4,457 vehicles encountered on the trail
- Over 10,625 people on the trail
- Fifty-eight enforcement contacts
- Fifty-seven warnings
- One citation
- One arrest

Season	Major Events	Stats			
		Vehicles	Persons	Warnings	Cite/Arrest
2013: Tim Peterson solo Deputy		3,846	7,803	187	0
2014: Tim Peterson/Steve Wunschel	Helicopter Crash, Small fires, King Fire, Rollover on Big Sluice, SAR	4,199	8,879	140	1/1
2015: Tony Broadfoot/Jeremiah Hamon	7 SAR's, 7 Veh. Rollovers, 5 M.A., Dis. Veh's, Illegal shooting, fires, attended multiple event	7,146	15,846	46	1/1
2016: OHV OT by committee	Citations for Registration/Resource/Parking 3 medical aides/1 death Problems: Trespass/Alcohol/Illegal Camping/Abandon Vehicles	2,654	7,158	90	7/1
2017	Off-Road Travel & Resource Damage	2,156	5,005	102	4
2018-Tim Peterson	Citations-1 vehicle code expired registration, 4 Illegal Fire.	4,557	7,640	87	5
2019Tim Peterson	Citations were for registration	2,722	5,400	61	10
2020 Tim Peterson	Citations for lack of helmets, concealed weapon, 4 illegal fires	2,788	6,263	126 Rubicon 12 Barrett	12 Rubicon
2021 Tim Peterson	Citations for resource damage, trespass and registration.	7282	17,000	56	14/3
2022 Craig Reimche		4,457	10,625	57	1/1

Trail Closure “The Mosquito Fire

Our area suffered from the Mosquito Fire that erupted in on October 27th which required us to close the Rubicon Trail for the safety of the users and to allow our first responders to perform without us in their way.



Grant

The Rubicon Trail, Operations and Maintenance (O&M) expired on 10/31/2022. This grant for 21/22 is in the amount of \$675,846 grant amount \$499,603 with \$176,243 in match. The O&M grant funded operations and maintenance, restroom cleaning and pumping and staff. The County was awarded an Operations and Maintenance Grant for work in 22/23 is in the amount of \$298,242, grant is \$220,698, match \$77,544.

The Education grant expired on 9/30/202 in the amount of \$100,346, \$73,853 in grant with \$26,493 in match. The Education grant for 22/23 was awarded in the amount of \$112,979 grant amount of \$81,064 with \$31,915 in grant match. These grants provide staffing at the kiosk and educational materials.

The Planning Grant expires on 9/4/2022 also which was to fund a study for a re-route on the Tahoe side of the trail. Tahoe National Forest and El Dorado County have made a lot of progress on this grant and anticipate completion in 2022. The study will be circulated for public comment. This grant has expired, and the study was completed with no charges to this grant.

In 20/21 we received a development grant for a maintenance yard for the County pumper truck storage. The grant amount is \$255,998, grant amount \$186,875 with a match of \$66,123. Staff is working on this grant and preparing for bids.

We also received a development grant for the parking lot paving at the Tahoma Staging area. The grant amount was \$626,187, grant amount \$463,868 with a grant match of \$162,319. This project has been completed and the grant will be closed.

Board of Supervisor Actions in 2022

March 15, 2022, Item #4, Legistar item #22-0304 the Board awarded the contract for Siller Helicopters.

Attachment A

Rubicon Trail Meeting

Saturday, March 26th, 2022

9am @ Reno Convention Center

Thanks go out to Al & Shirley Lockett for getting us the space to hold this meeting.

Groups and agencies present to answer questions:

El Dorado County Parks & Trails
Lake Tahoe Basin Management Unit
CA State Parks OHMVR Division
CORVA

Questions to those representing agencies and organizations:

Who has the ultimate control of the trail within Placer County? Specifically, can the Forest Service close a public County Road for an extended period of time without a fire nearby and without County approval? [If Placer County or USFS deems the access into the Rubicon a public danger or threat, it could be closed down by either. I remember getting an email when the fire was heading to Desolation and that Barker was closed to the public. I don't think it was a big deal as both agencies talk and communicate with each other.](#)

El Dorado County

- What is planned for the El Dorado side? 2022, 2023
 - [In 2022, we will be flying rock again. We are concentrating on the backside of the trail working from Arnolds Rock to the County Line. We will be dropping rock and armoring the trail. We will also be lifting large trees that went down in the blowdown in early 2021. We want to lift the trees at Wentworth Springs Campground and move them to the Intertie and some to Buck Island. Last year we blocked illegal bypasses and within days the users pulled everything out of the way and destroyed what we had done. So we will put very large trees they cannot move to block the illegal bypasses and keep users on the trail.](#)
 - [process for the bypass at Miller Creek. Working with Tahoe National Forest John Brokaw.](#)

- We have a development grant so we will be working on the maintenance building that will go at the end of 14N05 so the county has a facility to store the pumper truck and employees on the long days that they work out there.
- We have the education program where we hand out spill kits and Wag Bags at the kiosk. We have the bandanas done and focus on sanitation this year. We have been asked to help on Jeep Jamboree's Camp Rubicon program.
- 2023 we will focus on Wentworth Springs side of the trail working from Airport Flats Campground to the Intertie.
- What is planned for the Tahoe side?
 - 2021
 - In 2021 El Dorado County working with the Lake Tahoe Basin completed the paving at the Tahoma staging area.
 - In 2021 El Dorado County also provided maintenance on 14 BMP's on the Tahoe side working from the staging area.
 - 2022
 - We will assist on the Tahoe side working with the Basin to continue maintenance on the BMP's on the Basin portion of the trail.
 - 2023
 - Continue to assist with maintenance of the BMP's.
- Adopt-a-trail for the Tahoe side?
 - That would be up to Tahoe National and the Lake Tahoe Basin.
- Adopt-a-rolling dip: during and after their rebuilding
 - Same answer as above
- Bathrooms on the trail? At Observation, near intersection with 03-04?
 - The Forest Service would have to answer that.

Placer County

- Snow wall at Tahoma entrance, how will it be prevented? Berms on driveway entrances and ancillary easements are regular occurrences in Tahoe during the winter months. The Department of Public Works maintains snow removal from paved traveled ways on approved winter-maintained mileage roads as the public priority.
- Snow stakes at Tahoma entrance, did they work? Will the County maintain? The snow stakes demark the entrance to the trail in the winter.
- Who can officially close the road? Not entirely clear what the question is. Who will close the road in the winter if conditions warrant? The Placer County Department of Public Works maintains the public easement rights on the Rubicon Trail, that is, the public's right to pass. The trail is not a maintained roadway, however, and is not a winter-maintained plowed road. Signage is posted RE: hazards of winter use. The Department does not monitor trail conditions in the winter. The Department does monitor water quality conditions on the trail,

particularly during spring runoff, such that if continued motorized use on the trail (or users creating illegal trail bypasses to avoid natural trail hazards) will present a threat detrimental to and/or violating water quality standards and Placer County's permit requirements for TMDL within the Tahoe Basin, the trail may be closed.

Tahoe National Forest (TNF)

Who is the Tahoe National Forest lead? Forest-wide, OHV is lead by Joe Chavez, and John Brokaw continues to provide specific support on the Rubicon-related matters while the Truckee Ranger District completes its recruit/fill for a new OHV program lead.

Recap of work done last season 96 Tons of rock were placed to stabilize the erosive prone areas and loads are staged at Blackwood Canyon for the upcoming season.

-there were no public announcements

-side trail work? Work done on the access road in 2020 to prepare for rock delivery.

Work to be done in 2022, 23-Continued work on the erosive prone areas and the flood control area

NEPA surveys will initiate this year (Arch, botany, wildlife, soils and hydro survey)

For the relocation of 200 feet of trail on the low spot below Potato Patch.

Bypass: it was dry in the spring; can we go back to the original route? We are not planning on a return/continued use of original route.

Adopt-a-campsite: already in progress, follow through, expansion – Dependent on willing partners, and filling the OHV Depending on willing partners, and filling the OHV program lead position.

Lake Tahoe Basin Management Unit (LTBMU)

When will the repairs take place to the kiosk after FS employees damaged it?

This spring

Parking issues along paved access road – allow on south side only - Sounds appropriate needs to be followed up with signage.

Rebuilding the rolling dips – Working with El Dorado County on the rolling dips.

Signage at staging – no parking along edges – We have these signs and volunteers could place them. If it is to ensure travel lanes through the parking lot we may need to do a combination of signs and striping.

Bathrooms @ staging area – longer open dates – We would like to coordinate this with you.

2021 closures: first closure early (before Region 5), second closure after other

Forests had reopened, after El Dorado had reopened the Rubicon. Even after rain/snow and temperatures dropped, WHY? – [Unsure what this question is about, the fire? Should be straightened out this year if it occurs again.](#)

Rubicon Trail Foundation (RTF)

Snow wall update

Staging area bathrooms update, did RTF “adopt”?

Tahoe side bathrooms along the trail

RS2477 implications regarding the bypass within the TNF

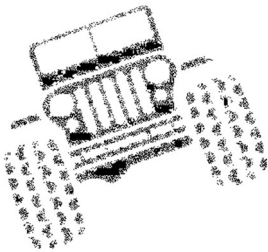
How did you fight the closures in 2021?

Why did you not notify the users of the LTBMU closure?

Friends of the Rubicon (FOTR)

Current status: does it exist, what’s scheduled?

With no adoption options on the Tahoe side, how do volunteers step up?



Attachment B