



HOMELESSNESS, ADDICTION, AND MENTAL HEALTH

THE CAUSE, CULTURE, COMPLEXITY, AND CYCLE

Ron Marlette
Executive Director
Upper Room
Placerville, Ca.

RON MARLETTE...WHO AM I? THE BACK STORY~



AFTER TODAY, YOU SHOULD BE ABLE TO~

- Describe The Homeless Population of El Dorado County
- Define the Homeless Culture as it Relates to El Dorado County
- Explain Three Unique Issues facing the Homeless Population of El Dorado County
- Understand the Connections to Substance Use Disorder, Mental Health, and Homelessness
- Understand and know the *Holistic Care Model* for Breaking the Cycle of Homelessness

DEFINITIONS...WHAT ARE WE TALKING ABOUT~

HOMELESS

The government definition of homeless is:

- A person that has no residence.

Culture

A collective shared response in terms of beliefs, values, and actions to a set of shared memories

A collective shared response in terms of beliefs, values, and actions to a shared situation

ADDICTION

Addiction is a chronic, relapsing brain disease defined by a physical and psychological dependence on drugs, alcohol, or a behavior.

MENTAL ILLNESS

Mental illnesses are health conditions involving changes in emotion, thinking or behavior (or a combination of these). Mental illnesses are associated with distress and/or problems functioning in social, work or family activities.

THE CONNECTION BETWEEN HOMELESSNESS AND ADDICTION~

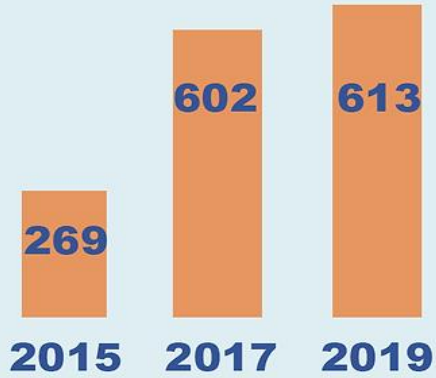
- There were approximately 553,000 homeless people in the United States.
- The US homeless population is increasing yearly, particularly in younger age ranges.
- Tragically, homelessness and substance abuse go hand in hand. The end result of homelessness is often substance abuse, and substance abuse can also contribute to homelessness.
- The National Coalition for the Homeless has found that 38% of homeless people are alcohol dependent, and 26% are dependent on other harmful chemicals.

NATIONAL HOMELESS CRISES

- In 2009 it was estimated that one out of 50 children or 1.5 million children in the United States of America would experience some form of homelessness each year.
- There were an estimated 37,878 homeless veterans in the United States during January 2017 or 8.6 percent of all homeless adults (compared with approximately 7 percent of the U.S. population in 2018 that were military veterans).
- Just over 90 percent of homeless U.S. veterans are male. Texas, California, and Florida have the highest numbers of unaccompanied.
- Homeless youth under 18 comprise 58% of the total homeless under 18 youth population.
- New York City reported it had approximately 114,000 temporarily homeless school children.

THE HOMELESS OF EL DORADO COUNTY

P-I-T HOMELESS COUNT



HEALTH CONDITIONS

Mental Health Disability



42%

Chronic Health Condition



36%

Physical Disability



24%

Developmental Disability



7%

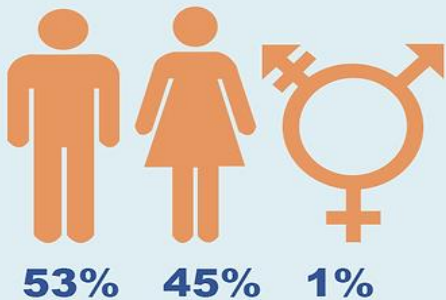
HIV/AIDS Related Illness



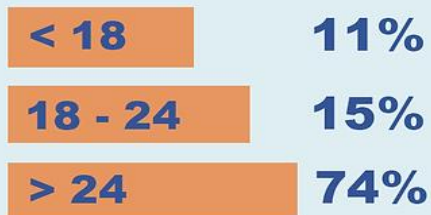
1%

In 2019, on a given night, more than 600 people experienced homelessness in El Dorado County

GENDER



AGE

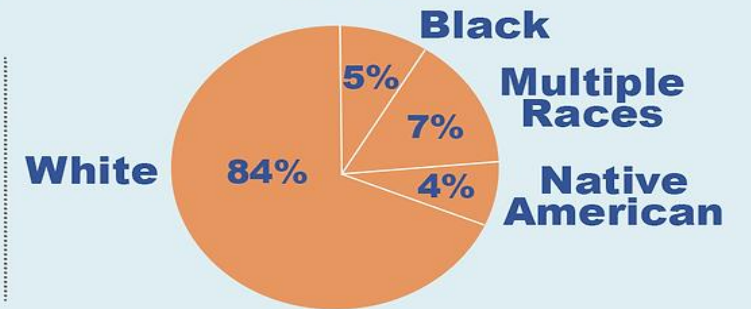


HOMELESS COUNT 2019

Sheltered Unsheltered



RACE



The Culture of Homelessness~

NO!

NO!

NO!

NO!



The Changing Face of Homelessness

30's

40's

50's

60's

70's

80's

90's

2000

2022



THE CULTURE OF HOMELESSNESS~SURVIVAL!

MENTAL ILLNESS-
APPROXIMATELY 22% OF
THE SINGLE ADULT
HOMELESS POPULATION
SUFFERS FROM SOME
FORM OF SEVERE AND
PERSISTENT MENTAL
ILLNESS (U.S.
CONFERENCE OF
MAYORS, 2001).

ADDICTION- DRUGS AND
ALCOHOL IS
DISPROPORTIONATELY
HIGH AMONG THE
HOMELESS

SOCIETY-FAMILY-OTHER
HOMELESS-DEATH-NOT MAKING
IT OUT-

EXISTING NOT LIVING

GIVING AND TAKING

ABUSE AND NEGLECT

ALL THIS LEADS TO A CULTURE
OF SURVIVAL

FACTORS AND REASONS FOR HOMELESSNESS

Structural Problems

- CHANGES IN THE HOUSING MARKET
- CHANGE IN EMPLOYMENT OPPORTUNITIES FOR PEOPLE WITH A HIGH SCHOOL DIPLOMA OR LESS
- MINIMUM WAGE
- THE BIRTH RATE IN LOW-INCOME FAMILIES
- UNEMPLOYMENT LEVELS



FACTORS AND REASONS FOR HOMELESSNESS

PERSONAL PROBLEMS

- ADULT AND CHILDHOOD VICTIMIZATION
- MENTAL ILLNESS
- ALCOHOL/DRUG ABUSE/ADDICTION
- LOW LEVEL OR NO LEVEL OF EDUCATION
- POOR OR NO WORK HISTORY

PLEASE DO NOT GIVE MONEY TO THE VAGRANTS

MOST OF THEM ARE PROFESSIONAL CON-ARTISTS. THE OTHERS ARE ADDICTS THAT WILL USE YOUR MONEY TO BUY DRUGS OR BOOZE. IF YOU WISH TO DONATE TO THOSE WHO ARE TRULY NEEDY, WE RECOMMEND:

Safe Haven Family Shelter
1209 3rd Avenue South
Nashville, TN 37216
Phone: 615-259-8788

Downtown Presbyterian Church
184 3rd Avenue North
Nashville, TN 37219
Phone: 615-254-7334

Home of the Holy Spirit
United for Human Development
132 8th Ave S
Nashville, TN 37203
Phone: 615-259-8788

Nashville Rescue Mission
628 Lafayette St
Nashville, TN 37202
Phone: 615-259-3475

- No Privacy means everyone can see you
- When everyone can see you, they can judge you
- When the public can see you, they judge you
- When businesses can see you, they judge you
- When politicians can see you, they judge you
- When the police can see you, they judge you
- Judgment leads to harassment



WHAT IS ADDICTION?

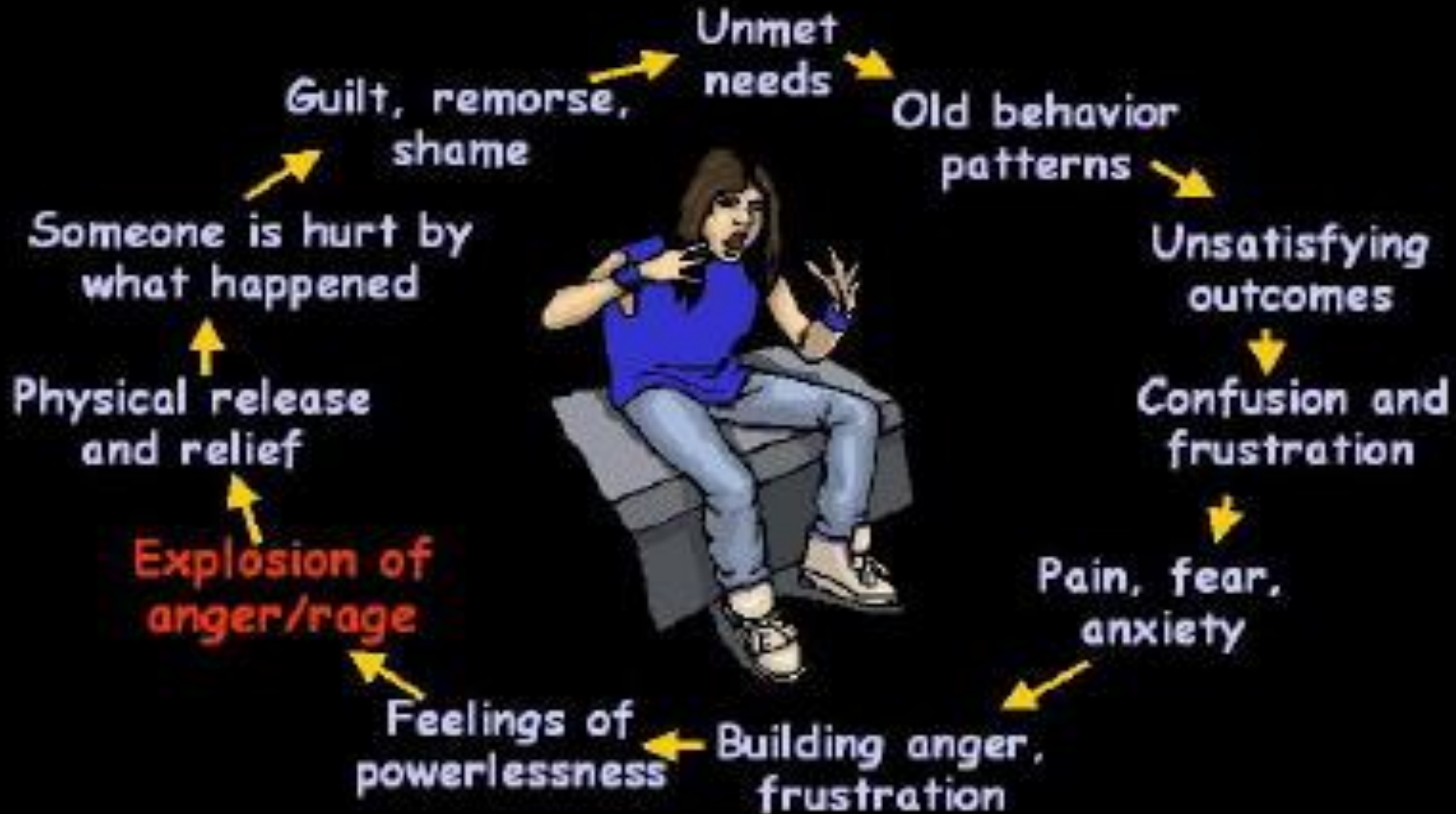
ADDICTION IS A BRAIN DISEASE CHARACTERIZED BY:

COMPULSIVE BEHAVIOR

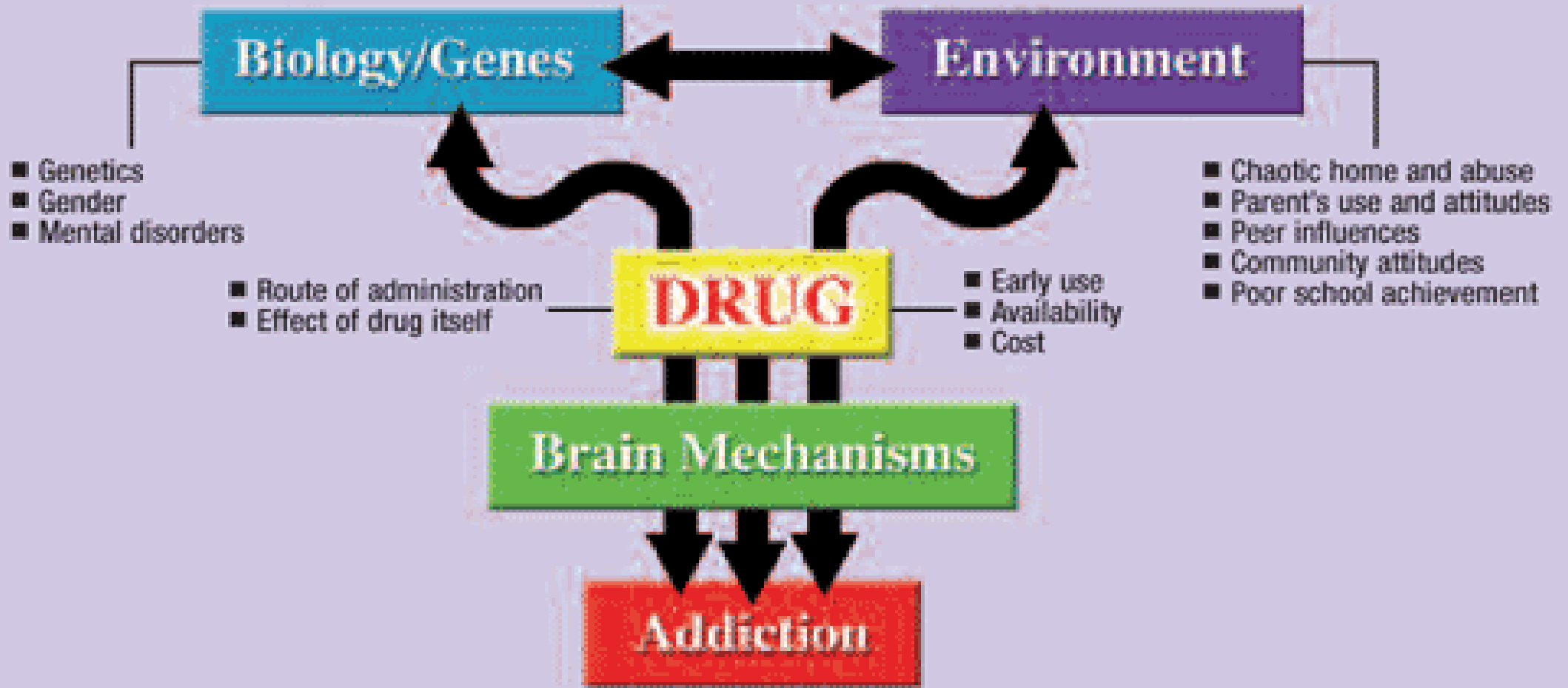
CONTINUED ABUSE OF DRUGS DESPITE NEGATIVE CONSEQUENCES

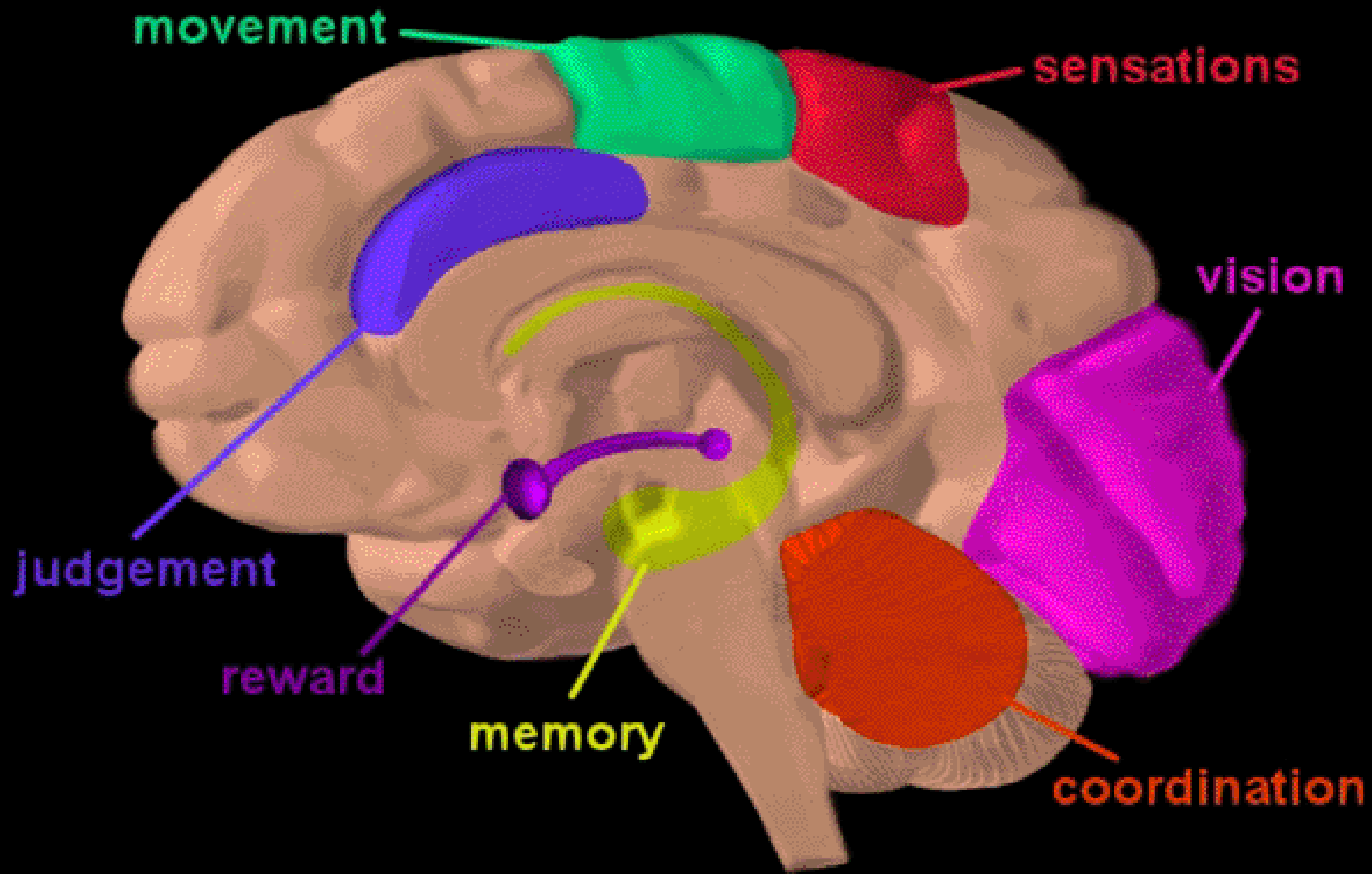
PERSISTENT CHANGES IN THE BRAIN'S STRUCTURE AND FUNCTION

THE CYCLE OF ADDICTION



RISK FACTORS

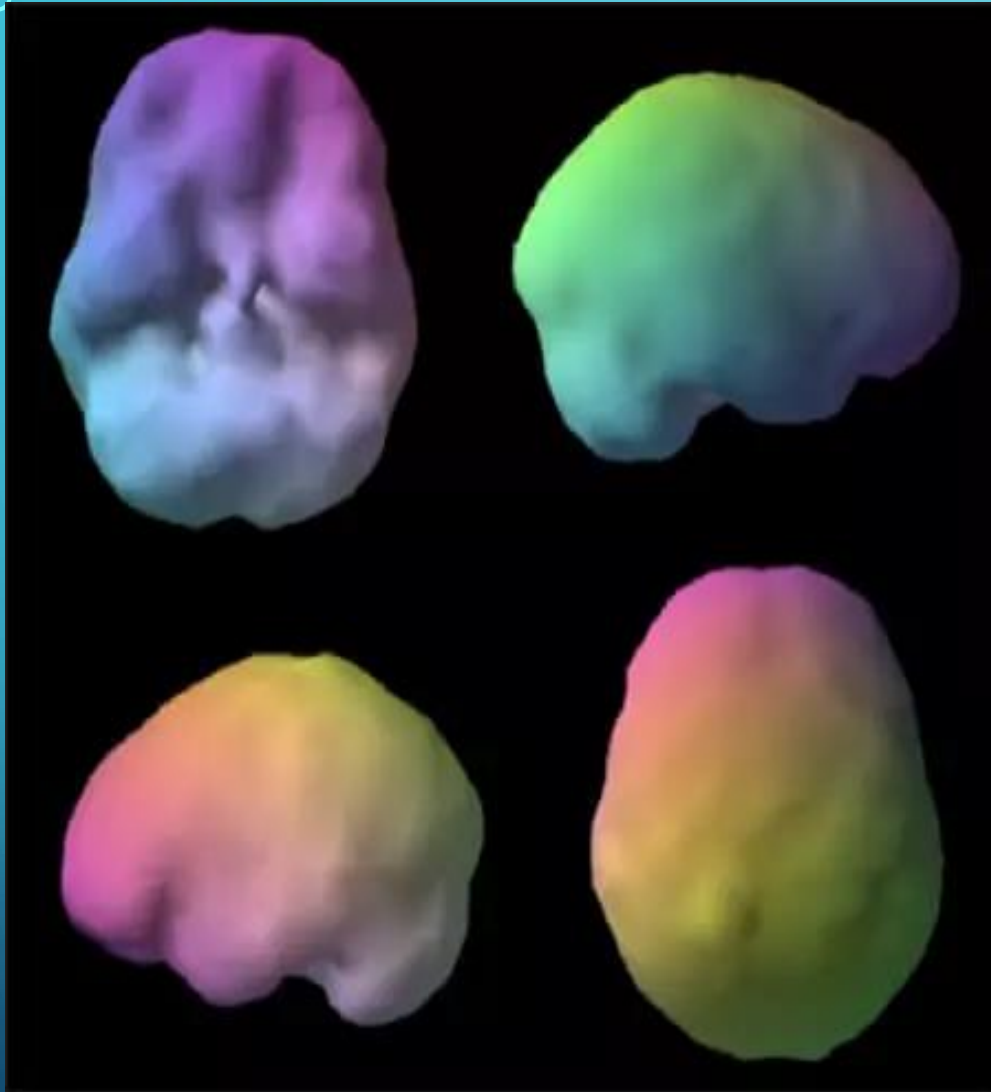




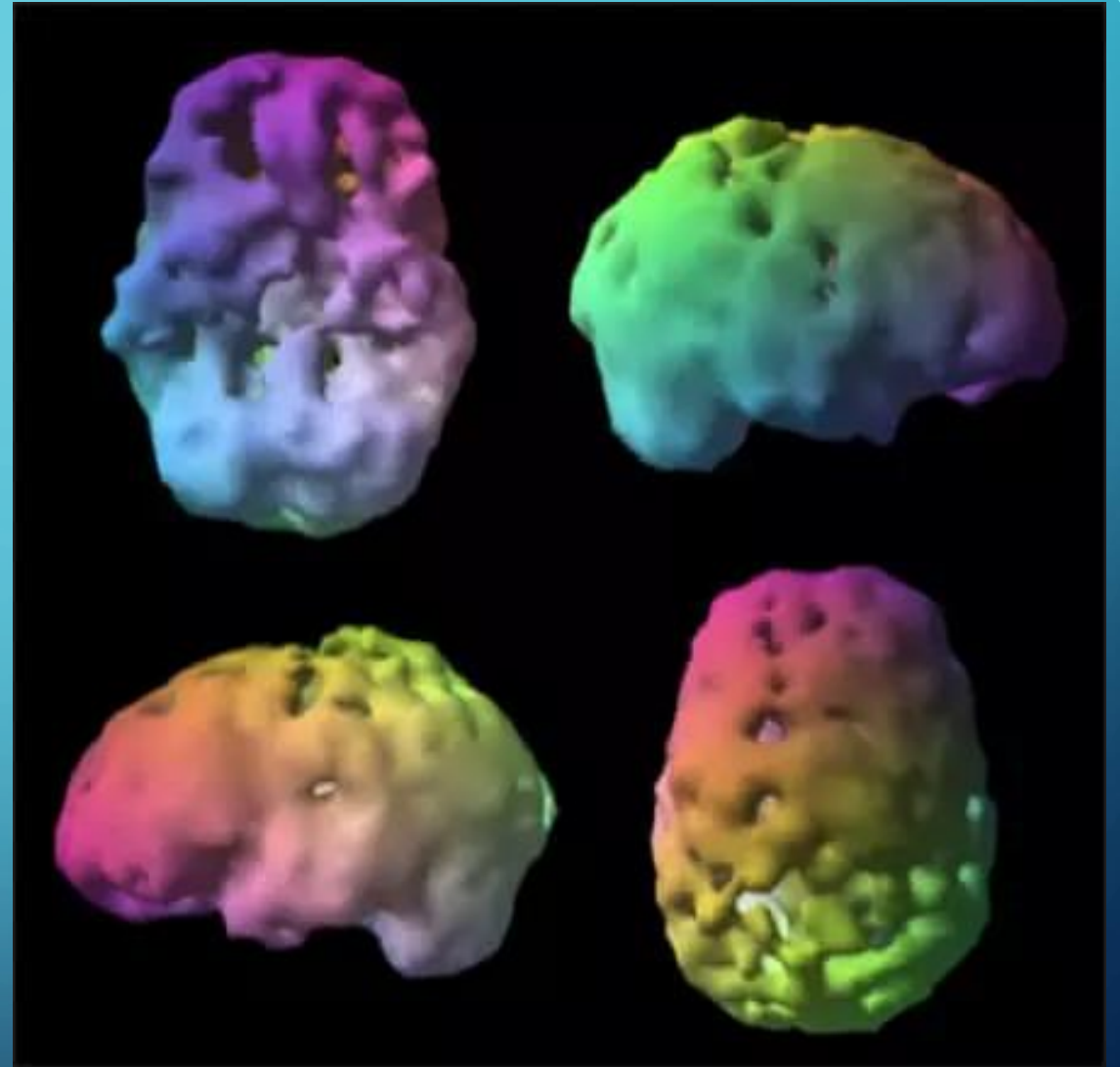
The Command Center of Life ~ It's role in mental health, addiction, and homelessness...AND RECOVERY, HEALTH, and LIFE?

DID YOU KNOW?

- The brain is the most complex organ in the universe.
- It has 100 BILLION neurons (nerve or brain cells).
- TRILLIONS of connections to other cells.
- The human brain can process information as fast as 268 mph.
- There are 100,000 miles of blood vessels in the brain.
- Each person has about 70,000 thoughts daily, 50% in words and 50% in images.
- While awake, a human brain can generate enough energy to power a light bulb (between 10-23 watts).



Healthy Brain Scan



Unhealthy Brain Scan

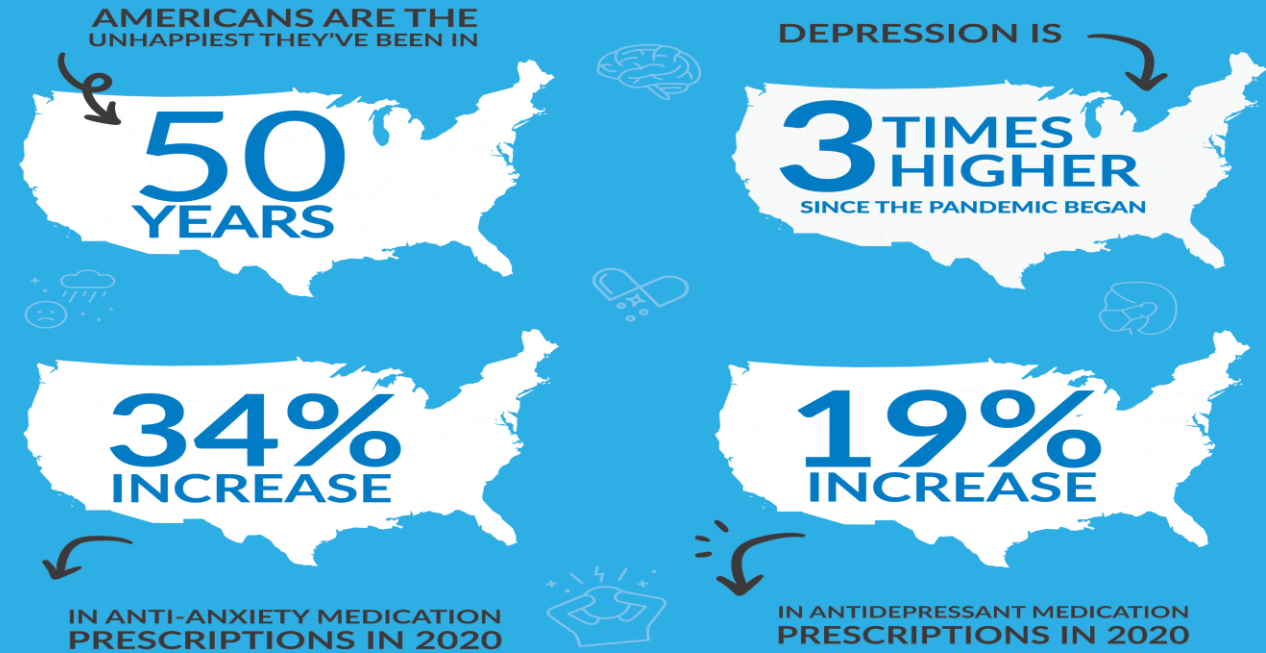
Mental Health, Addiction, and Homelessness

Not having a safe place to stay at night can cause insomnia. This may lead to substance use simply because it's easier to find drugs than to find a bed for the night.

Many homeless people may also have post-traumatic stress disorder (PTSD). Traumatic events may have occurred in their lives, such as:

- War
- Domestic violence
- Rape
- Assault
- Theft
- Molestation (And many more Reasons)

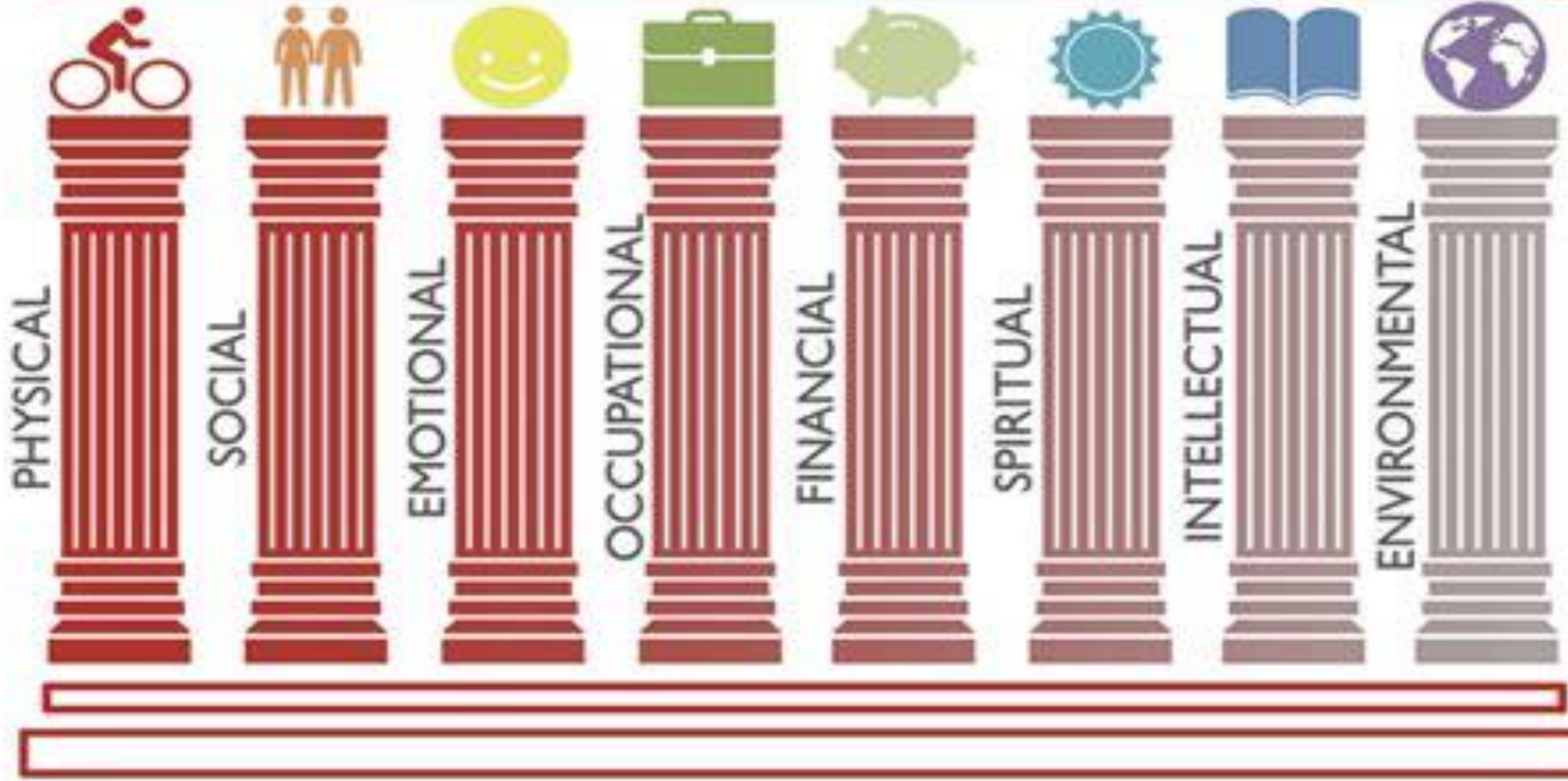
THE SAD STATISTICS OF UNHAPPINESS IN AMERICA



At Amen Clinics, we use brain SPECT imaging as part of a comprehensive evaluation to help our patients discover the root cause of depression, anxiety, stress, and a wide range of mental health conditions. Brain imaging has taught us that depression is not a single or simple disorder, and that giving everyone who's depressed the same medication will never work. Based on your brain scans, we can better determine how you will respond to treatment so you can feel better faster.

To learn more, visit our website at www.AmenClinics.com

8 PILLARS OF WELLNESS



How Can We Change The Picture?

To Live, Love, Learn, And Leave A Legacy

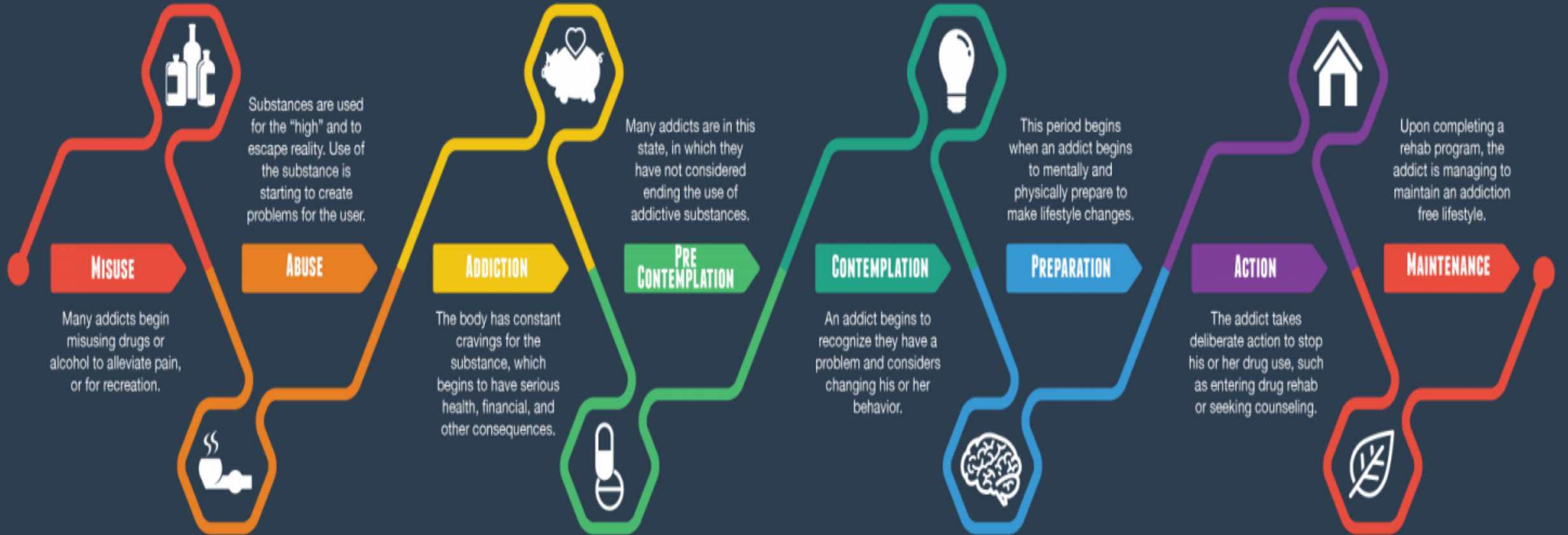
Holistic Recovery and Living

PHYSICAL – PSYCHOLOGICAL - BEHAVIORAL - SOCIAL - SPIRITUAL



In order to properly address the homeless issue, one must consider a holistic approach that tackles the root causes of personal homelessness. Historically, entities provide specialized services for the homeless at a cost. However, the services provided often times are putting a band-aid on a broken leg because they do not address the complex issues of homelessness. At best, they temporarily fix a problem, and at worst they encourage and enable the homeless to continue in unhealthy behavior.

BREAKING THE CYCLE OF ADDICTION



WE ENVISION~

“We envision a society where people who are addicted to alcohol or other drugs, people in recovery from addiction, and people at risk for addiction are valued and treated with dignity; and where stigma, accompanying attitudes, discrimination, and other barriers to recovery are eliminated. We envision a society where addiction is recognized as a public health issue – a treatable disease for which individuals should seek and receive treatment; and where treatment is recognized as a specialized field of expertise”

(Changing the Conversation; The National Treatment Plan Initiative; November 2000).

~LET'S GO CHANGE THE WORLD~
STARTING WITH EL DORADO COUNTY

THANK YOU!