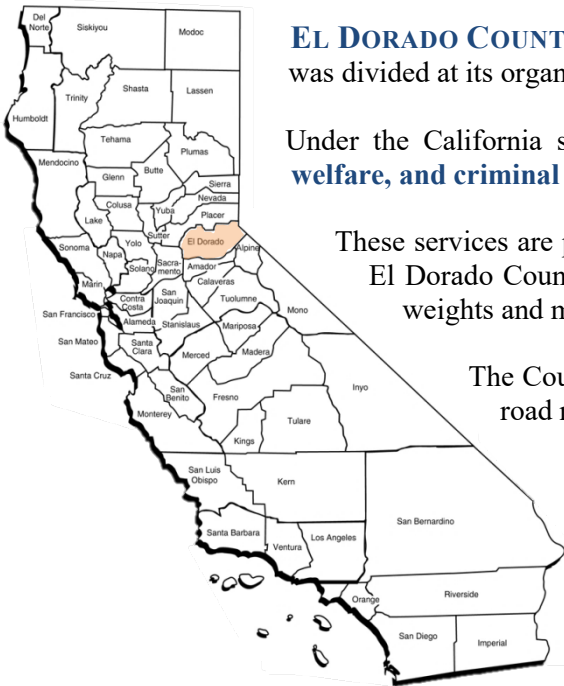


EL DORADO COUNTY PROFILE & DEMOGRAPHICS



EL DORADO COUNTY is one of the original 27 counties into which the state of California was divided at its organization and admission to the union in 1850.

Under the California state constitution, **counties are required to provide health care, welfare, and criminal justice programs**, and enforce state and federal laws as applicable.

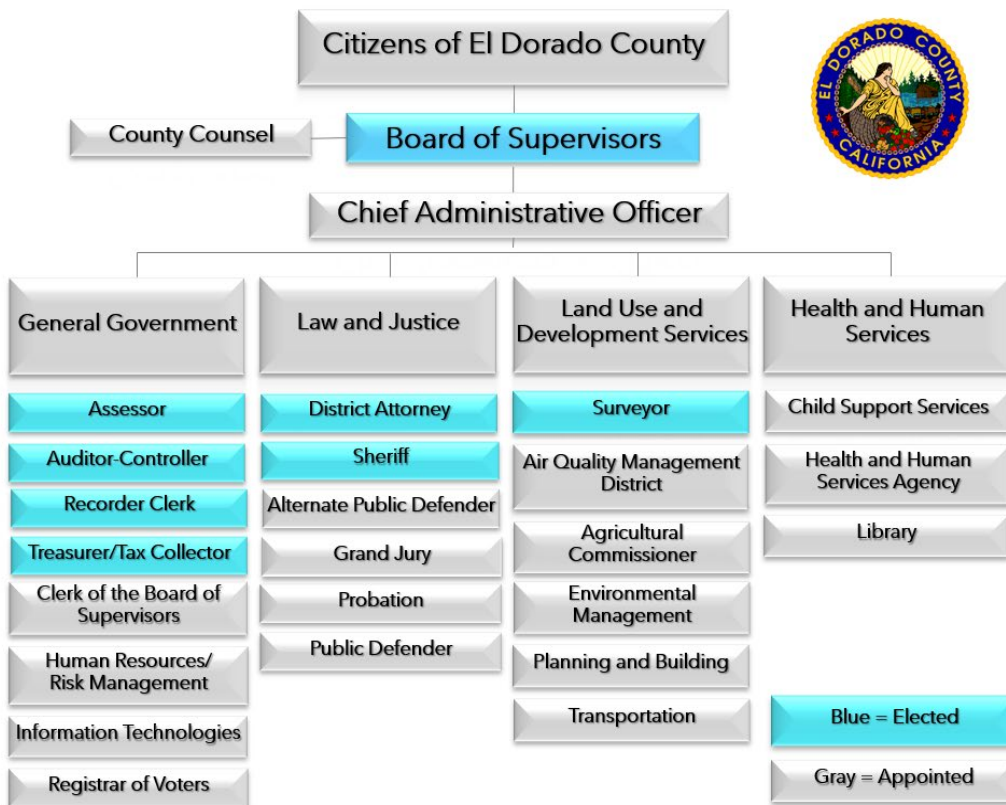
These services are provided to all residents within the county’s jurisdiction. In addition, El Dorado County provides regional services such as libraries, parks and recreation, weights and measures inspection, and pesticide regulation.

The County also provides municipal services such as building inspection and road maintenance for residents of unincorporated areas.

Two incorporated cities are located within El Dorado County: Placerville and South Lake Tahoe.

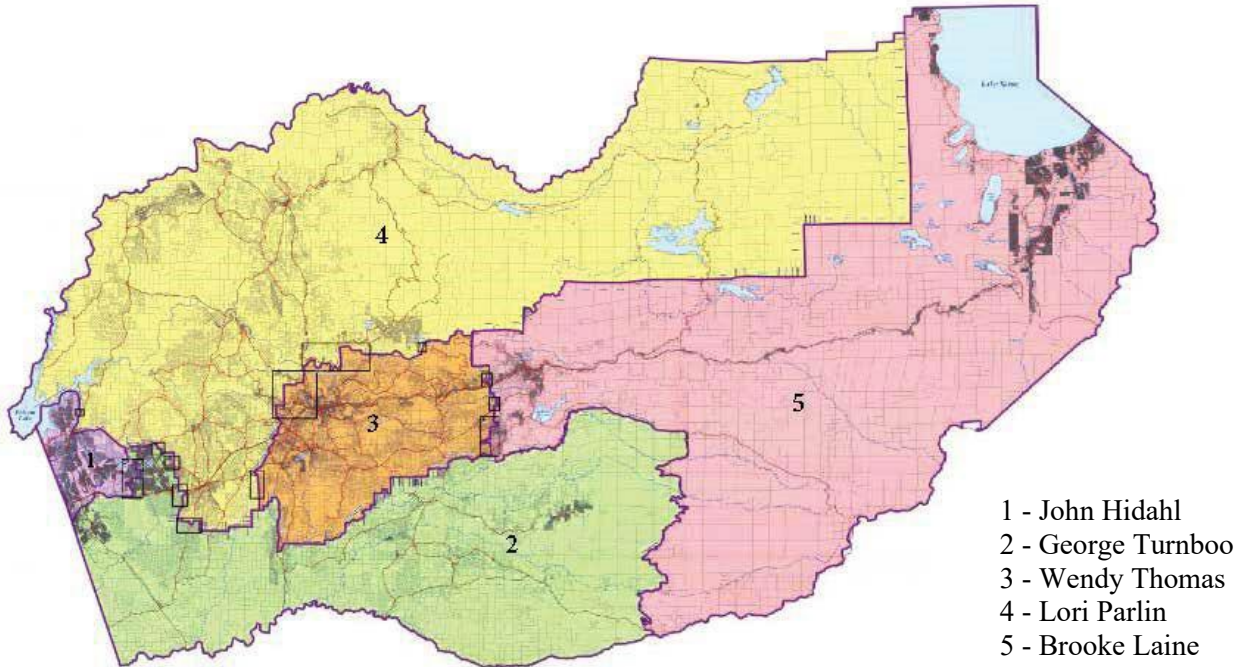
COUNTY ORGANIZATION

The County is divided into four functional areas that represent services to residents. El Dorado is one of 14 California counties that operate under a charter, allowing the County a limited degree of control over the number and duties of the governing board and some officials. A majority of the department directors are appointed by the Board of Supervisors, while other officials are elected to serve a four-year term.



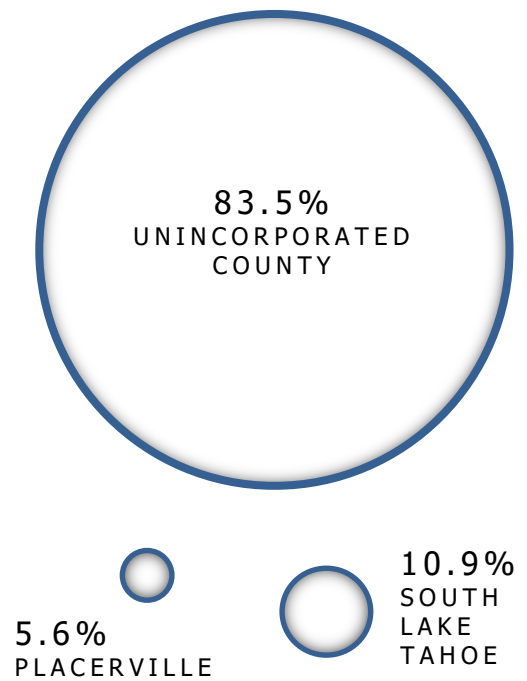
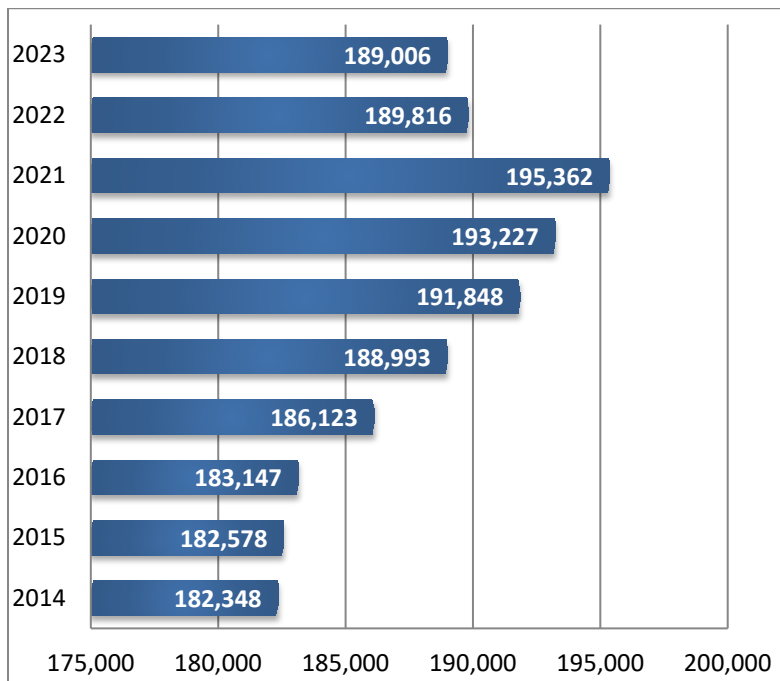
BOARD OF SUPERVISORS

The Board of Supervisors has the authority to perform all the duties vested in it by the Constitution, general law, and the charter. The Board of Supervisors appoints the Chief Administrative Officer, members of boards and commissions, and nonelected department heads. The Board of Supervisors is comprised of five members, one elected from each County district.

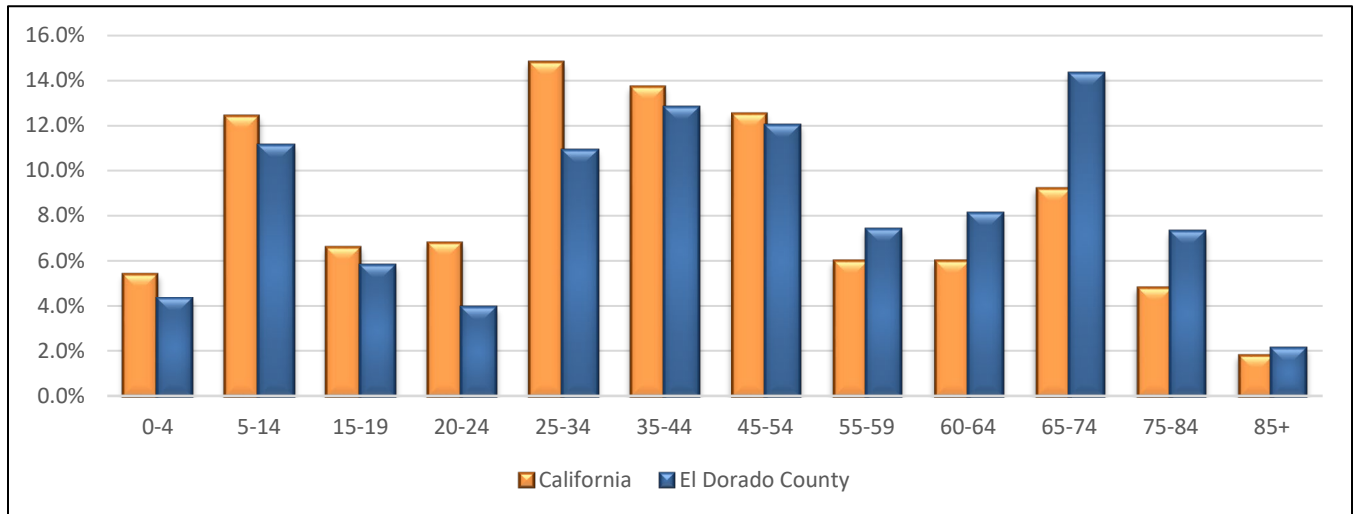


TOTAL POPULATION

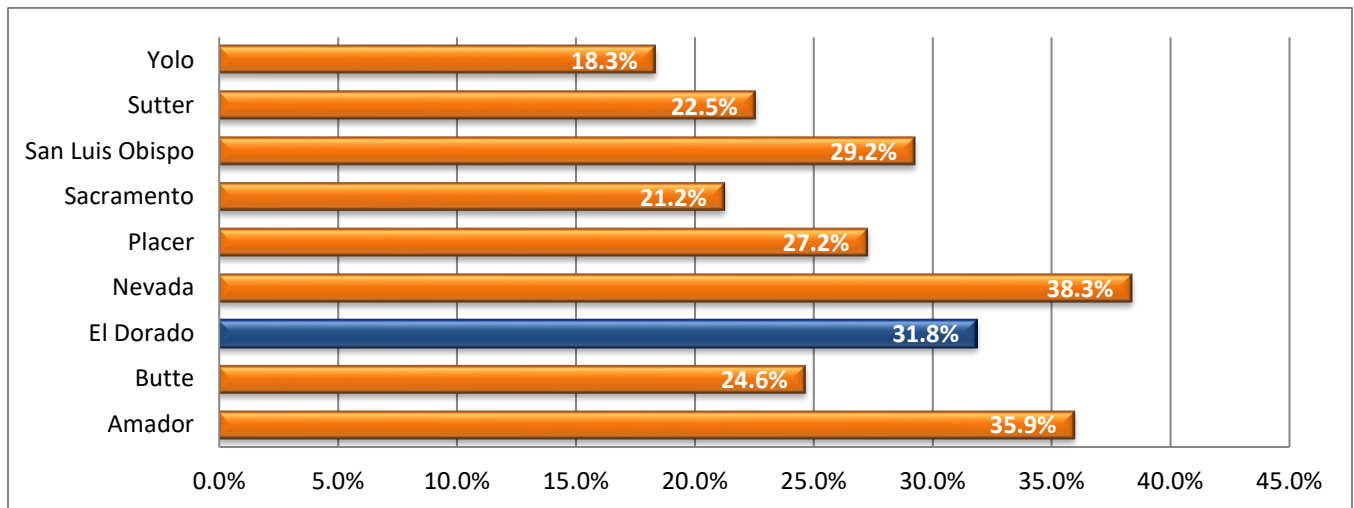
El Dorado County has experienced a growth rate of 3.7% over the last decade. However, since reaching its peak in 2021, there has been a decline of 3.25%. The majority of the County's residents, which is 157,873 people, live outside the incorporated cities of Placerville and South Lake Tahoe.



POPULATION BY AGE GROUP (1)



PERCENT OF POPULATION 60 YEARS AND OVER (1)



Source: (1) U.S. Census Bureau, 2022 American Community Survey 1-Year Estimates

HOUSING

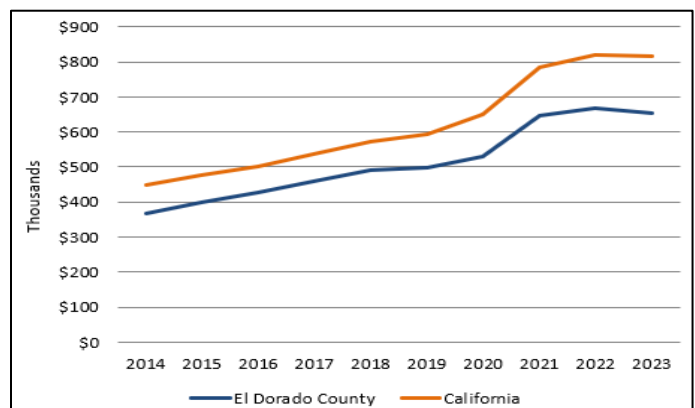
El Dorado County has an estimated 94,837 housing units. For the County as a whole, 76.1% of homes are owner-occupied. However, only 44% of housing units in South Lake Tahoe are owner-occupied, which affects this number. Many homes in that area are not primary residences but rather second homes.

Source: U.S. Census Bureau Quickfacts: El Dorado County, July 1, 2022 (V2022)

SINGLE-FAMILY MEDIAN HOME SALE PRICES

El Dorado County home values have decreased 2.3% over the past year. The median home value of owner-occupied housing is \$654,227. The median list price per square foot in El Dorado County is \$315, which is lower than the State of California average of \$398.

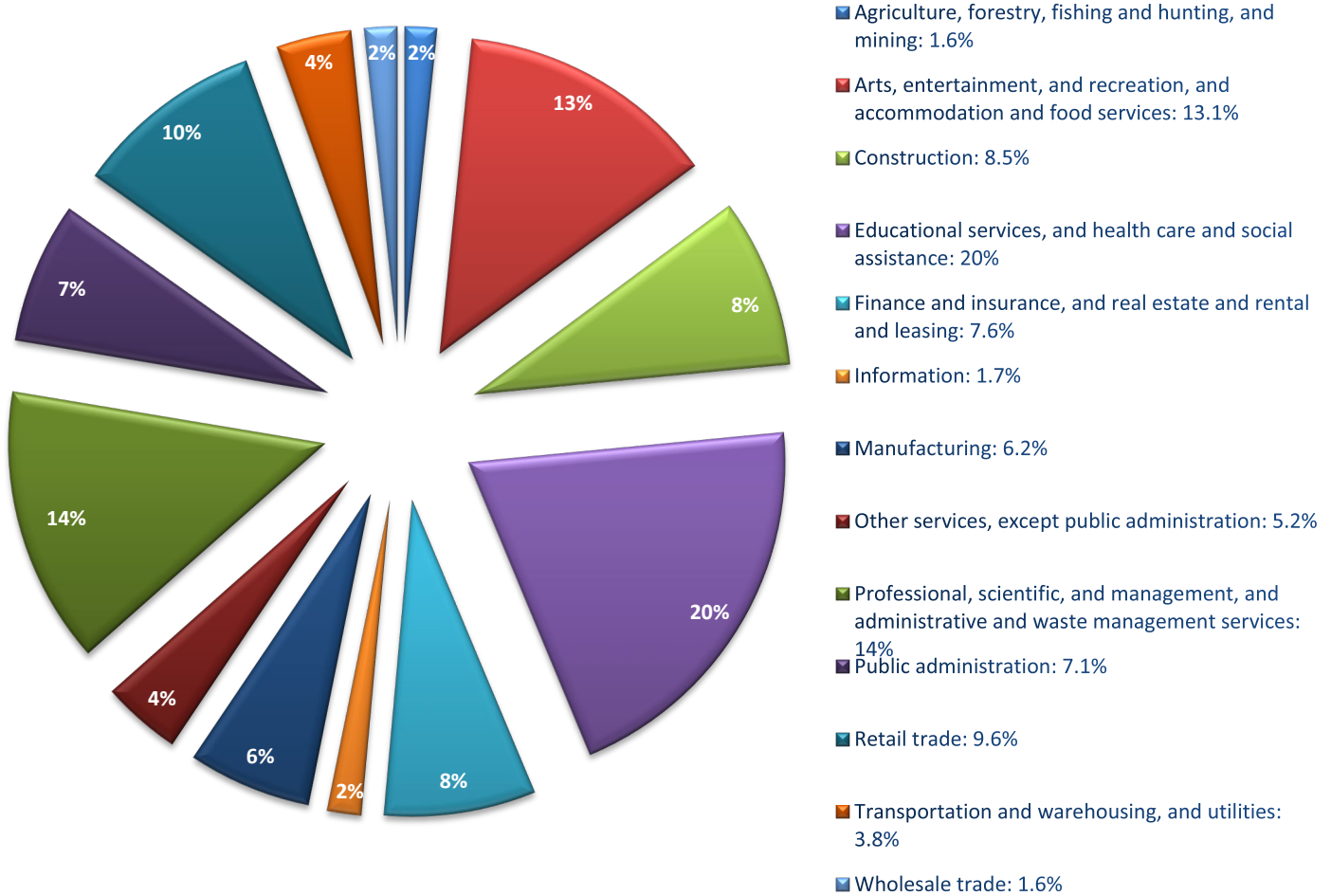
Source: California Association of Realtors, Jan 2024



EL DORADO COUNTY PROFILE & DEMOGRAPHICS

ECONOMY

El Dorado County enjoys an economy as diverse as its landscape ⁽¹⁾.



The County's largest employment sector is Educational Services, Health Care, and Social Assistance, employing 17,623.

Professional, Scientific and Management, and Administrative and Waste Management Services employs 12,356.

Arts, entertainment and recreation, and accommodation and food services come in third, employing 11,514.

COUNTY EMPLOYEES ⁽⁵⁾

(Per 1,000 residents; excluding city populations ⁽⁴⁾)

12.7	El Dorado
13.0	Nevada
18.6	Amador
22.3	Sacramento
24.3	San Luis Obispo
25.7	Placer
39.5	Butte
52.4	Yolo
54.6	Sutter

MEDIAN HOUSEHOLD INCOME ⁽²⁾

California	El Dorado
\$91,905	\$99,246

UNEMPLOYMENT RATE ⁽³⁾

California	El Dorado
4.2%	3.9%

PER CAPITA INCOME ⁽²⁾

California	El Dorado
\$45,591	\$55,455

POVERTY RATE ⁽²⁾

California	El Dorado
12.2%	7.6%

Sources:

(1) U.S. Census Bureau, 2020 American Community Survey 5-Year Estimates

(2) U.S. Census Bureau Quickfacts: El Dorado County V2022

(3) California Employment Development Department (EDD)

(4) California Department of Finance, E-1 Cities, Counties, and the State Population Estimates (2023)

(5) FY 2023-24 Adopted Budgets

PROPERTY TAX

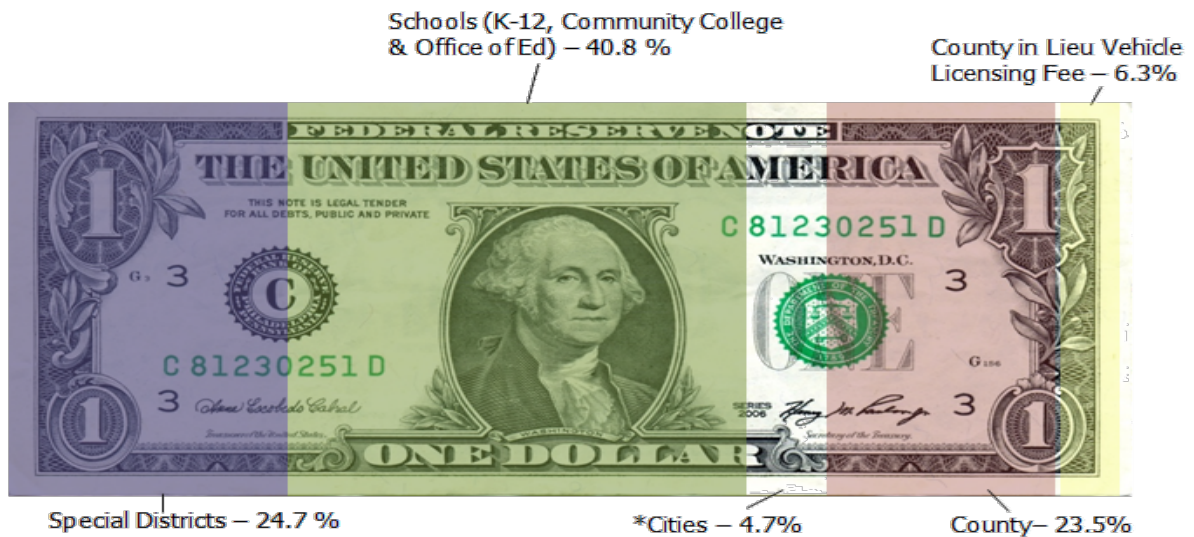
All real and some personal property (unless exempted), is assessed and taxed under the State Constitution and Revenue & Taxation Code.



Property taxes are a major source of unrestricted revenue for the County General Fund, schools, cities, and special districts. Proposition 13 establishes the current method of assessment. Property owners may also vote to include certain types of additional special assessments along with property taxes. The County Assessor maintains the inventory of assessable property and prepares the assessment rolls. The Auditor maintains the tax rates, calculates the taxes due, and adds any special assessments.

How is property tax revenue distributed?

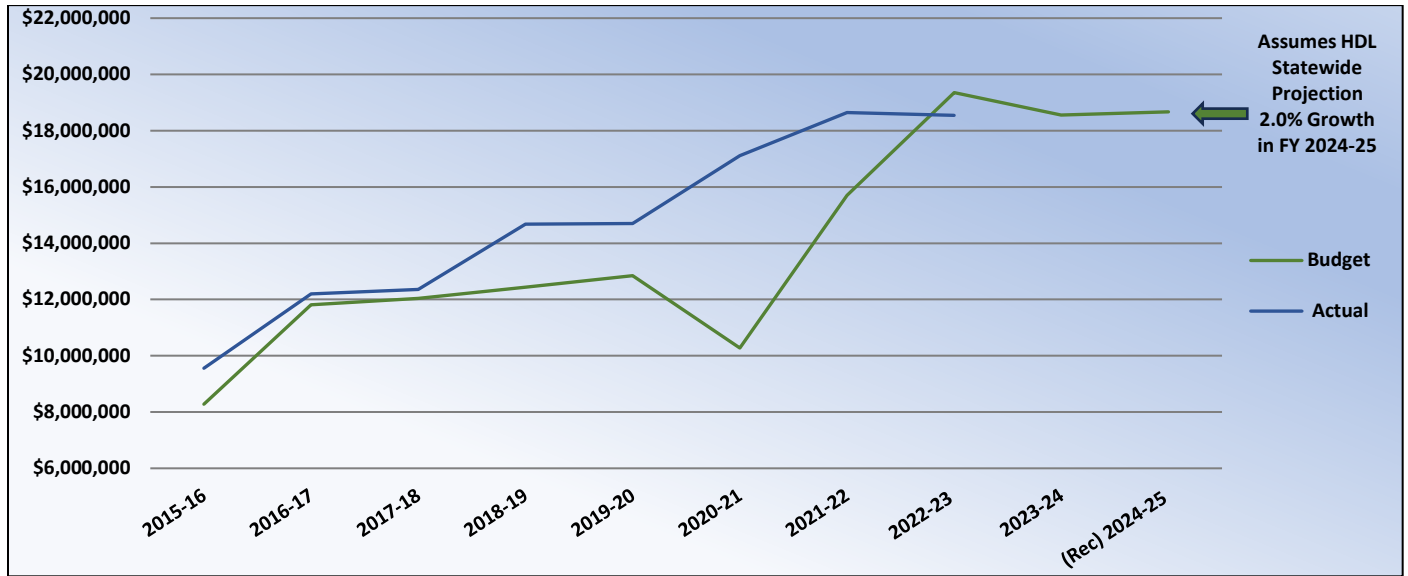
Property taxes are allocated within a county based on the historical share of property tax received by local agencies prior to Proposition 13. Under certain conditions, taxes may be reallocated.



Graphic developed by the Treasurer-Tax Collector Department. (Source El Dorado County Auditor-Controller's Office)
 *includes the Cities of Placerville and South Lake Tahoe (2.5%), Cities in Lieu Vehicle Licensing fees (.9%) and City of So. Lake Tahoe Redevelopment Successor Agency (1.3%)

SALES TAX

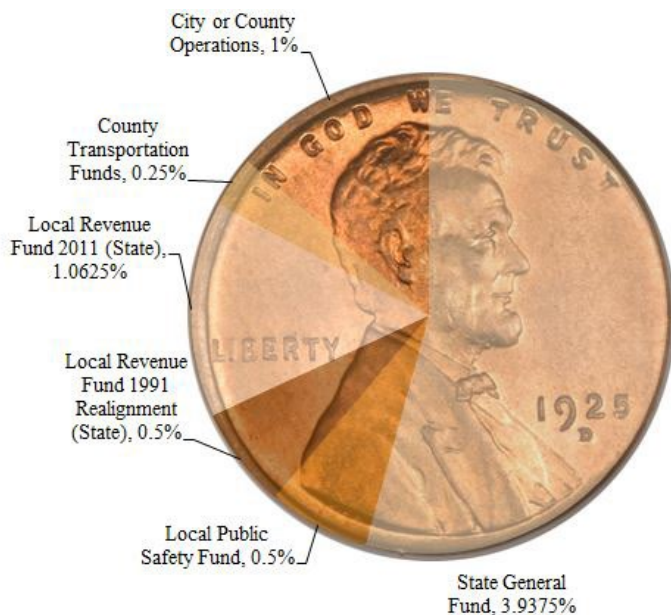
The Bradley-Burns Uniform Sales and Use Tax Law provides for a city/county rate of 1.25%. One-quarter cent of the levy is sent to the county-wide regional transportation fund. The balance goes to support local government general funds.



*Represents only the General Fund Discretionary Sales tax Source: El Dorado County Final Budget, 2012-13 through 2022-23

How is Sales Tax Allocated? ⁽¹⁾

El Dorado County receives 1% of the 7.25% statewide sales tax rate for general County operations. The City of South Lake Tahoe imposes an additional 1.50% tax over the state rate, and Placerville imposes an additional 1%.



(1) Data source: California State Board of Equalization, Sales & Use Tax Rate, Effective January 1, 2024

TAXES COLLECTED ⁽²⁾

(FY 2022-23, in millions, excludes cities)

Sacramento	\$805.00
Placer	\$294.13
San Luis Obispo	\$259.49
El Dorado	\$161.13
Butte	\$88.75
Nevada	\$76.13
Yolo	\$59.35
Sutter	\$40.62
Amador	\$32.68

(FY 2022-23, Per Resident, excludes cities)

Placer	\$2,610.13
San Luis Obispo	\$2,165.79
Sutter	\$2,047.44
Yolo	\$1,844.89
Butte	\$1,380.87
Amador	\$1,353.49
Sacramento	\$1,344.62
Nevada	\$963.97
El Dorado	\$871.17

(2) Source: FY 2022-23 Adopted Budgets, Summary Schedule 5 estimates