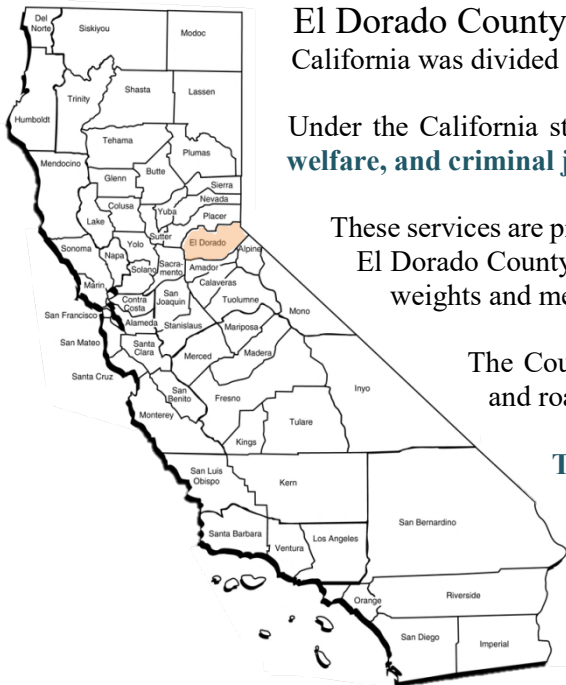


EL DORADO COUNTY PROFILE & DEMOGRAPHICS



El Dorado County is one of the original 27 counties into which the state of California was divided at its organization and admission to the union in 1850.

Under the California state constitution, **counties are required to provide health care, welfare, and criminal justice programs**, and enforce state and federal laws as applicable.

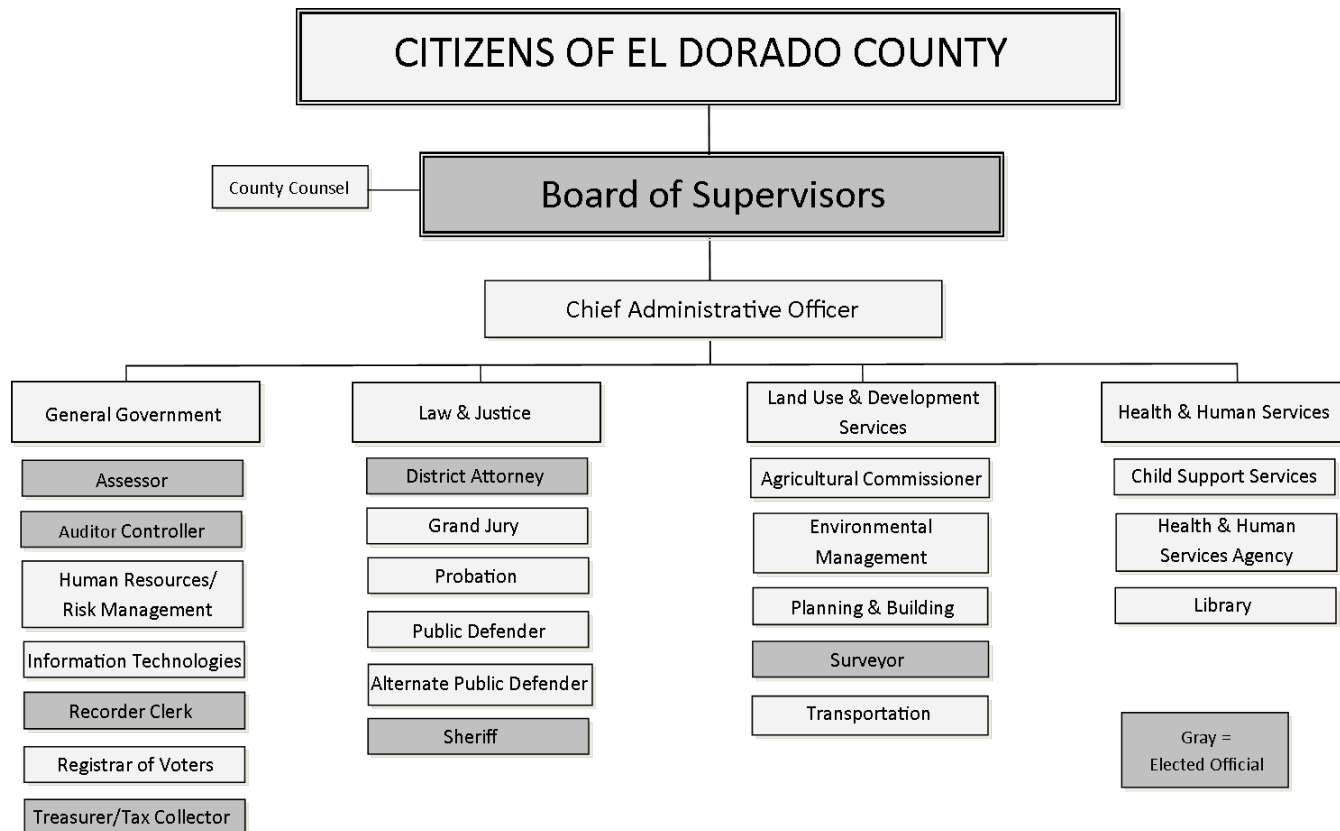
These services are provided to all residents within the county's jurisdiction. In addition, El Dorado County provides regional services such as libraries, parks and recreation, weights and measures inspection, and pesticide regulation.

The County also provides municipal services such as building inspection and road maintenance for residents of unincorporated areas.

Two incorporated cities are located within El Dorado County: Placerville and South Lake Tahoe.

COUNTY ORGANIZATION

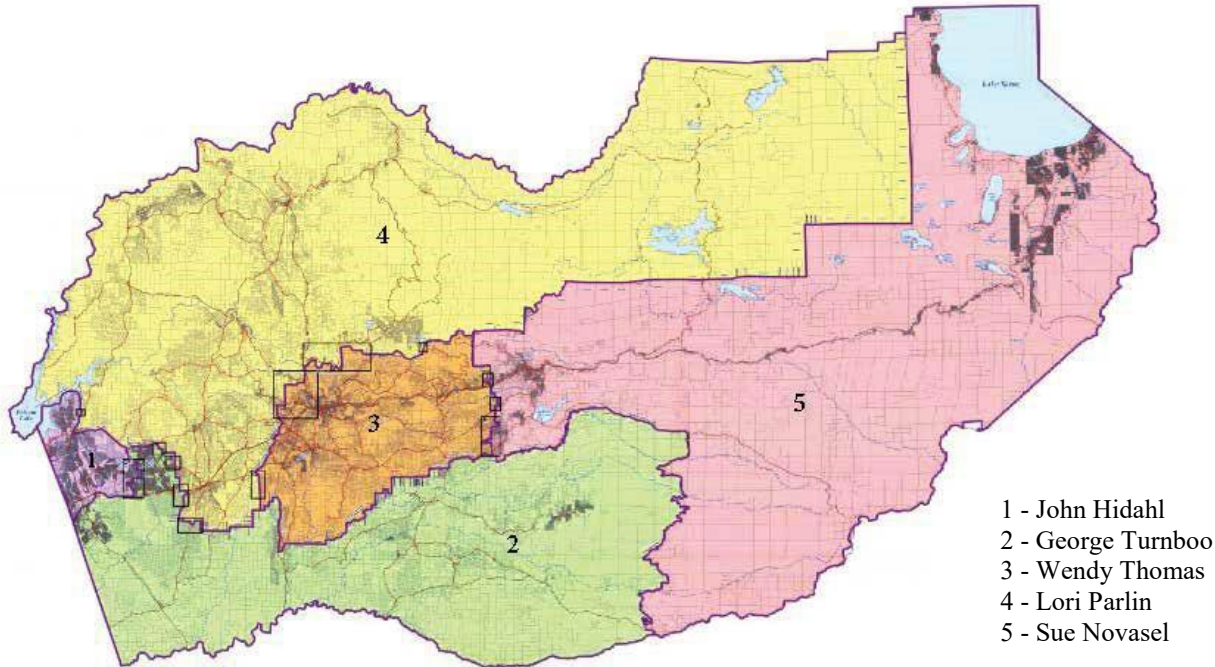
The County is divided into four functional areas that represent services to residents. El Dorado is one of 14 California counties that operate under a charter, allowing the County a limited degree of control over the number and duties of the governing board and some officials. A majority of the department directors are appointed by the Board of Supervisors, while other officials are elected to serve a four-year term.



EL DORADO COUNTY PROFILE & DEMOGRAPHICS

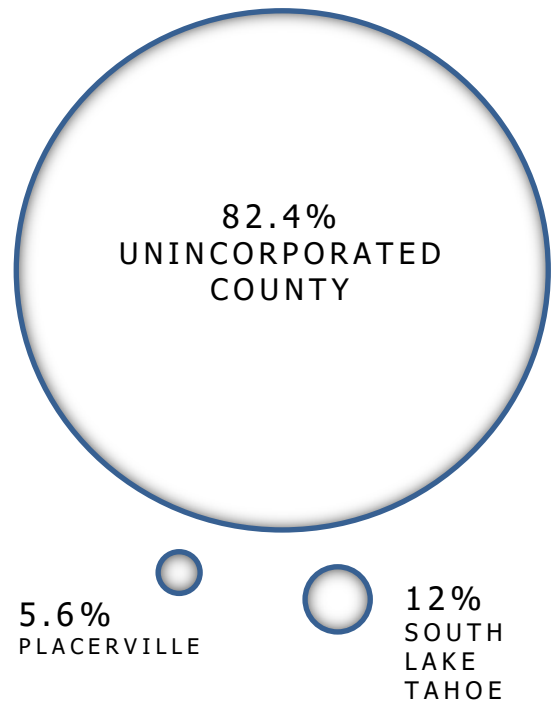
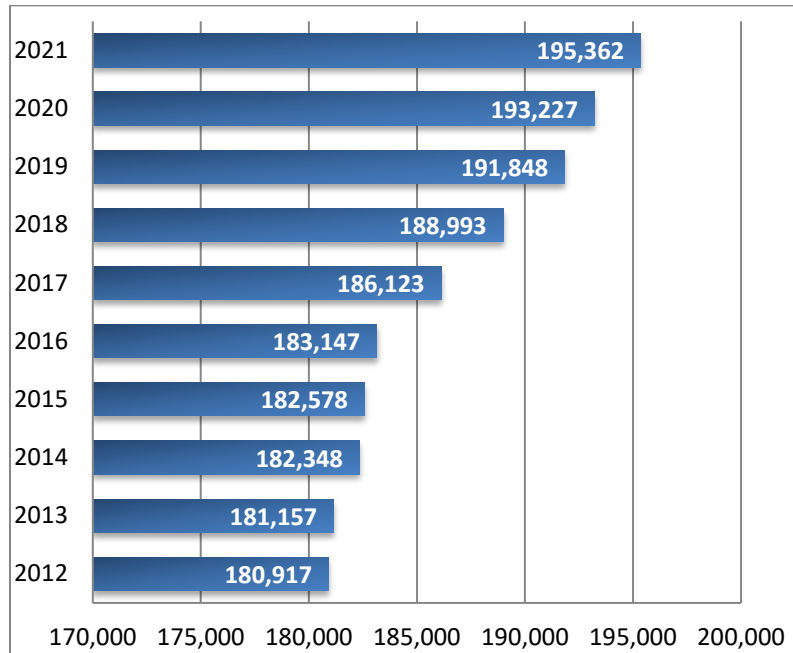
BOARD OF SUPERVISORS

The Board of Supervisors has authority to perform all the duties vested in it by the Constitution, general law, and the charter. The Board of Supervisors appoints the Chief Administrative Officer, members of boards and commissions, and nonelected department heads. The Board of Supervisors is comprised of five members, one elected from each County district.



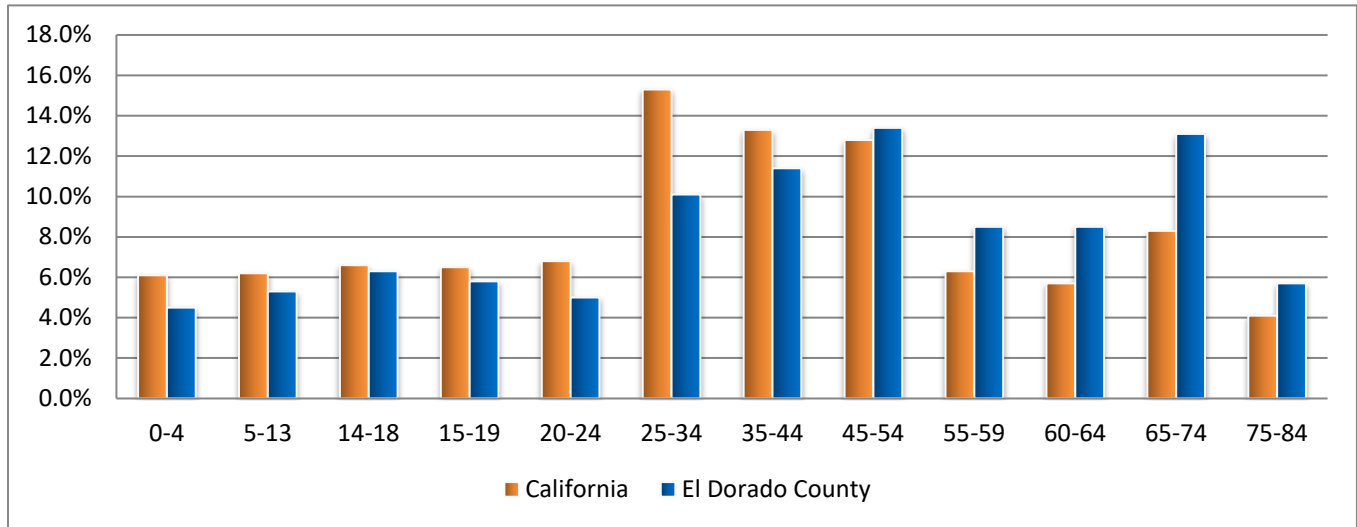
TOTAL POPULATION

Over the last 10-year period, El Dorado County grew 8 percent. The majority of El Dorado County citizens (161,076) reside outside of the two incorporated cities of Placerville and South Lake Tahoe.

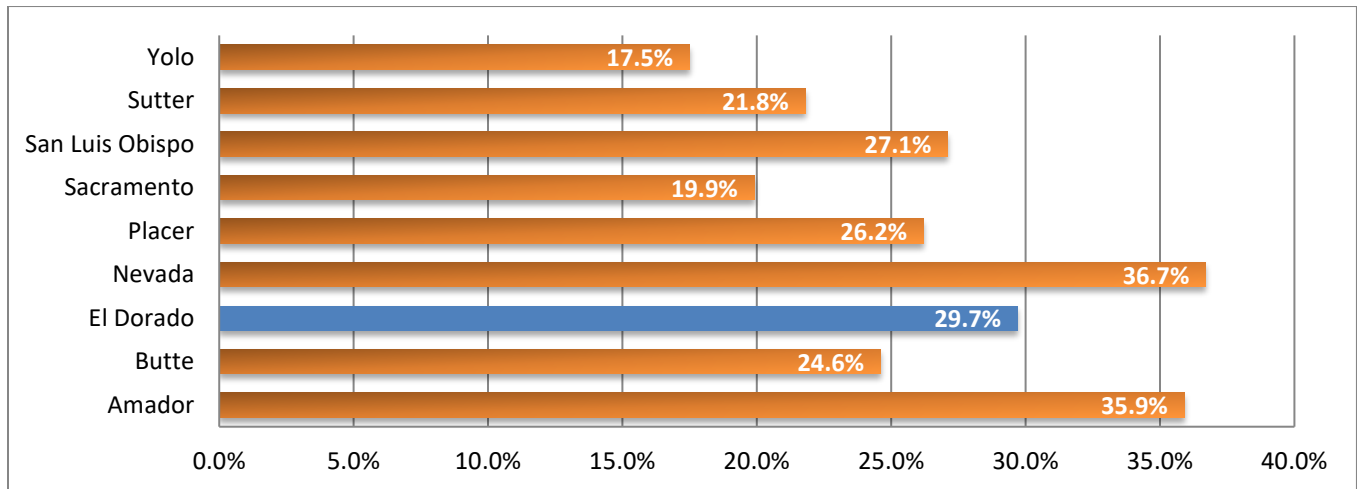


Source: State of California, Department of Finance, 2020-21 E-1 Population Estimates.

POPULATION BY AGE GROUP



PERCENT OF POPULATION 60 YEARS AND OVER



Source: U.S. Census Bureau Quickfacts: El Dorado County V2021

HOUSING

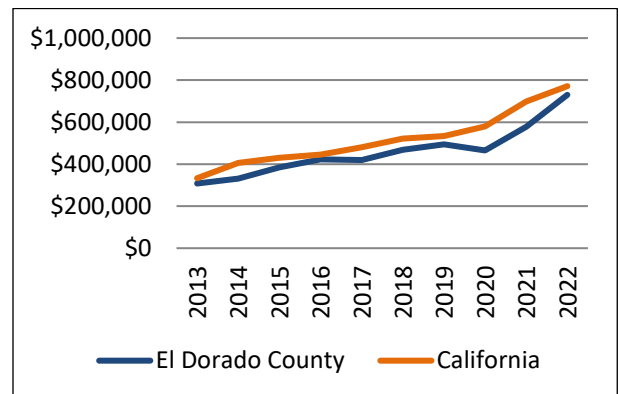
In El Dorado County there are approximately 91,660 housing units. For the County as a whole, 75.5% of homes are owner-occupied. However, this number is affected by only 41.8% of housing units in the City of South Lake Tahoe being owner-occupied. Many homes in that area of the County are second homes and not the primary residence of the owner.

Source: U.S. Census Bureau Quickfacts: El Dorado County V2021

SINGLE-FAMILY MEDIAN HOME SALE PRICES

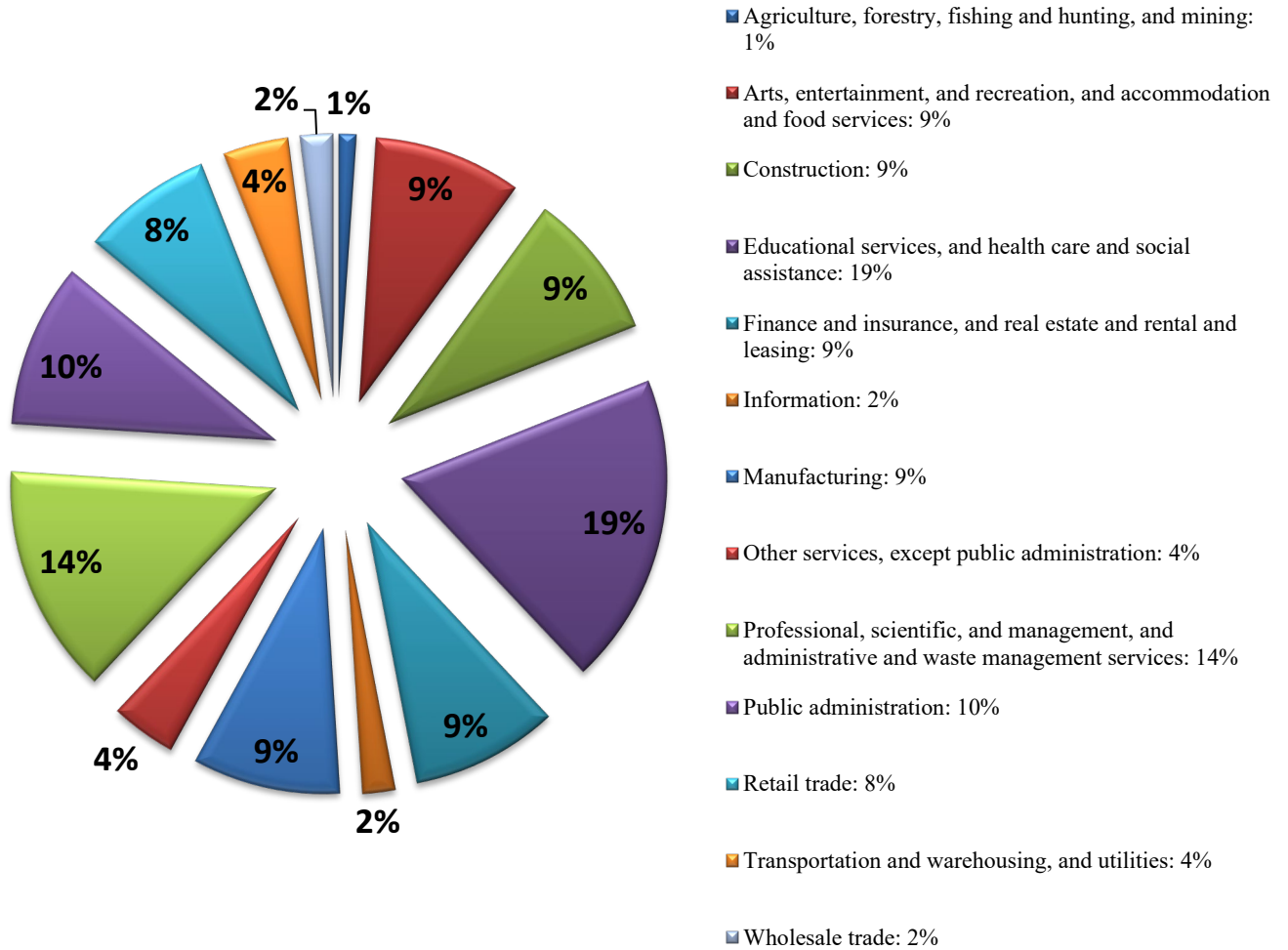
El Dorado County home values have increased 26.4% over the past year. The median home value of owner-occupied housing is \$730,000. The median list price per square foot in El Dorado County is \$348, which is lower than the State of California average of \$392.

Source: California Association of Realtors, Feb 2022



ECONOMY

El Dorado County enjoys a diverse economy.



The County’s largest employment sector is Educational Services, Health Care, and Social Assistance, employing 10,543.

Professional, Scientific, and Management, and Administrative and Waste Management Services employ 7,964. Public Administration comes in third, employing 5,377.

The County’s poverty rate is 8.5% compared to California’s rate of 12.6%.

COUNTY EMPLOYEES⁽⁵⁾
(Per 1,000 residents; excluding city populations⁽⁴⁾)

11.9	El Dorado
12.2	Nevada
18.0	Amador
22.2	Sacramento
23.6	Placer
24.5	San Luis Obispo
40.6	Butte
50.1	Sutter
64.6	Yolo

MEDIAN HOUSEHOLD INCOME⁽²⁾

California	El Dorado
\$78,672	\$83,710

UNEMPLOYMENT RATE⁽³⁾

California	El Dorado
5.5%	4.5%

PER CAPITA INCOME⁽²⁾

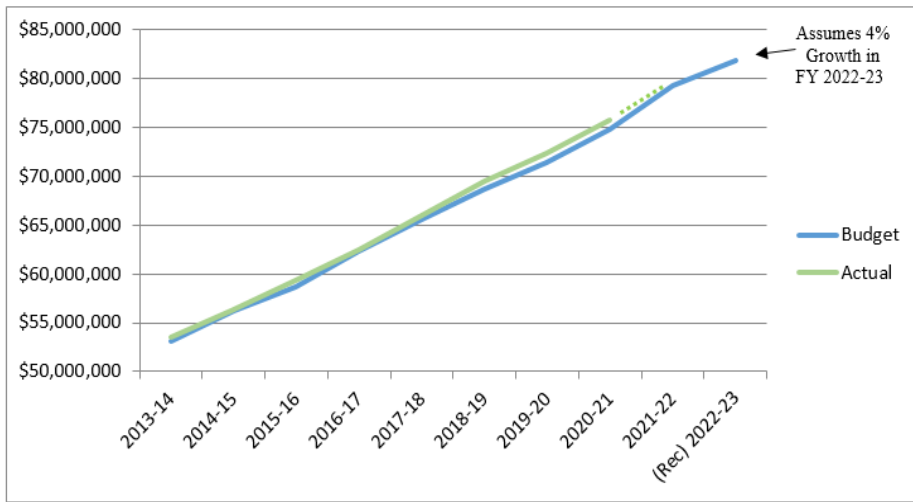
California	El Dorado
\$38,576	\$44,651

Sources:

- (1) U.S. Census Bureau, 2020 American Community Survey 5-Year Estimates
- (2) U.S. Census Bureau Quickfacts: El Dorado County V2021
- (3) California Employment Development Department (EDD)
- (4) California Department of Finance, E-1 Cities, Counties, and the State Population Estimates
- (5) FY 2021-22 Recommended Budgets

PROPERTY TAX

All real and some personal property (unless exempted), is assessed and taxed under the State Constitution and Revenue & Taxation Code.



Property taxes are a major source of unrestricted revenue for the County General Fund, schools, cities, and special districts. Proposition 13 establishes the current method of assessment. Property owners may also vote to include certain types of additional special assessments along with property taxes. The County Assessor maintains the inventory of assessable property and prepares the assessment rolls. The Auditor maintains the tax rates, calculates the taxes due, and adds any special assessments.

How is property tax revenue distributed?

Property taxes are allocated within a county based upon the historical share of property tax received by local agencies prior to Proposition 13. Under certain conditions, taxes may be reallocated.

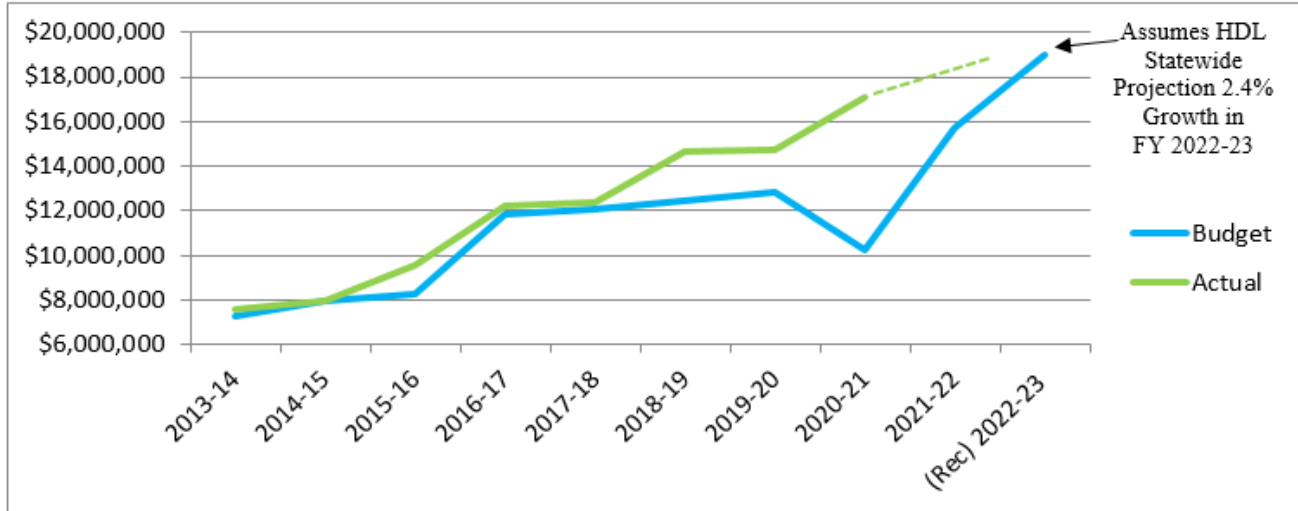


*Includes the Cities of Placerville and South Lake Tahoe (2.5%), Cities in Lieu Vehicle Licensing fees (.9%) and City of So. Lake Tahoe Redevelopment Successor Agency (1.3%).

EL DORADO COUNTY PROFILE & DEMOGRAPHICS

SALES TAX

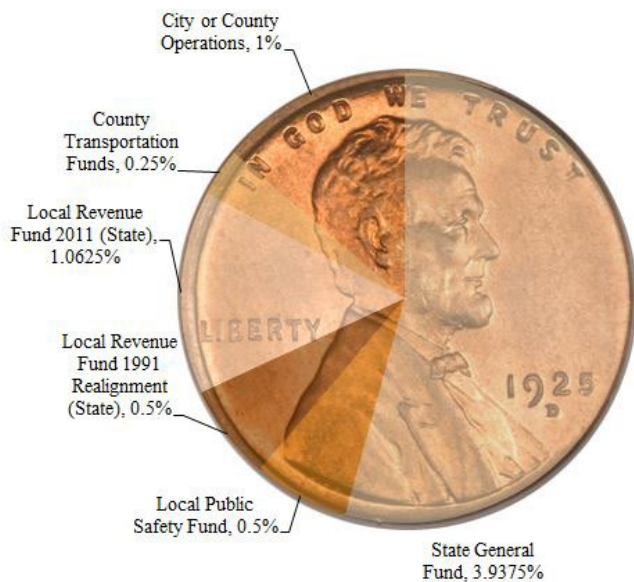
The Bradley-Burns Uniform Sales and Use Tax Law provides for a city/county rate of 1.25%. One-quarter cent of the levy is sent to the county-wide regional transportation fund. The balance goes to support local government general funds.



*Represents only the General Fund Discretionary Sales tax Source: El Dorado County Final Budget, 2012-13 through 2021-22

How is Sales Tax Allocated?

El Dorado County receives 1% of the 7.25% statewide sales tax rate for general County operations. The City of South Lake Tahoe imposes an additional 1.50% tax over the state rate, and Placerville imposes an additional 1%.



Data source: California State Board of Equalization, Sales & Use Tax Rate, Effective April 1, 2022

TAXES COLLECTED

(Total FY 2020-21, in millions)

Sacramento	\$700.59
Placer	\$260.19
San Luis Obispo	\$208.86
El Dorado	\$141.81
Butte	\$76.69
Yolo	\$56.71
Nevada	\$52.60
Sutter	\$34.95
Amador	\$26.88

(FY 2020-21, Per Resident, excludes cities)

Placer	\$2,270.10
Yolo	\$2,211.60
San Luis Obispo	\$1,808.20
Sutter	\$1,652.70
Butte	\$1,290.80
Amador	\$1,248.90
Sacramento	\$1,186.40
El Dorado	\$880.40
Nevada	\$804.10

Source: FY 2019-20 adopted budgets, Summary Schedule 5 estimates