

RECOMMENDED BUDGET FY 2020-21

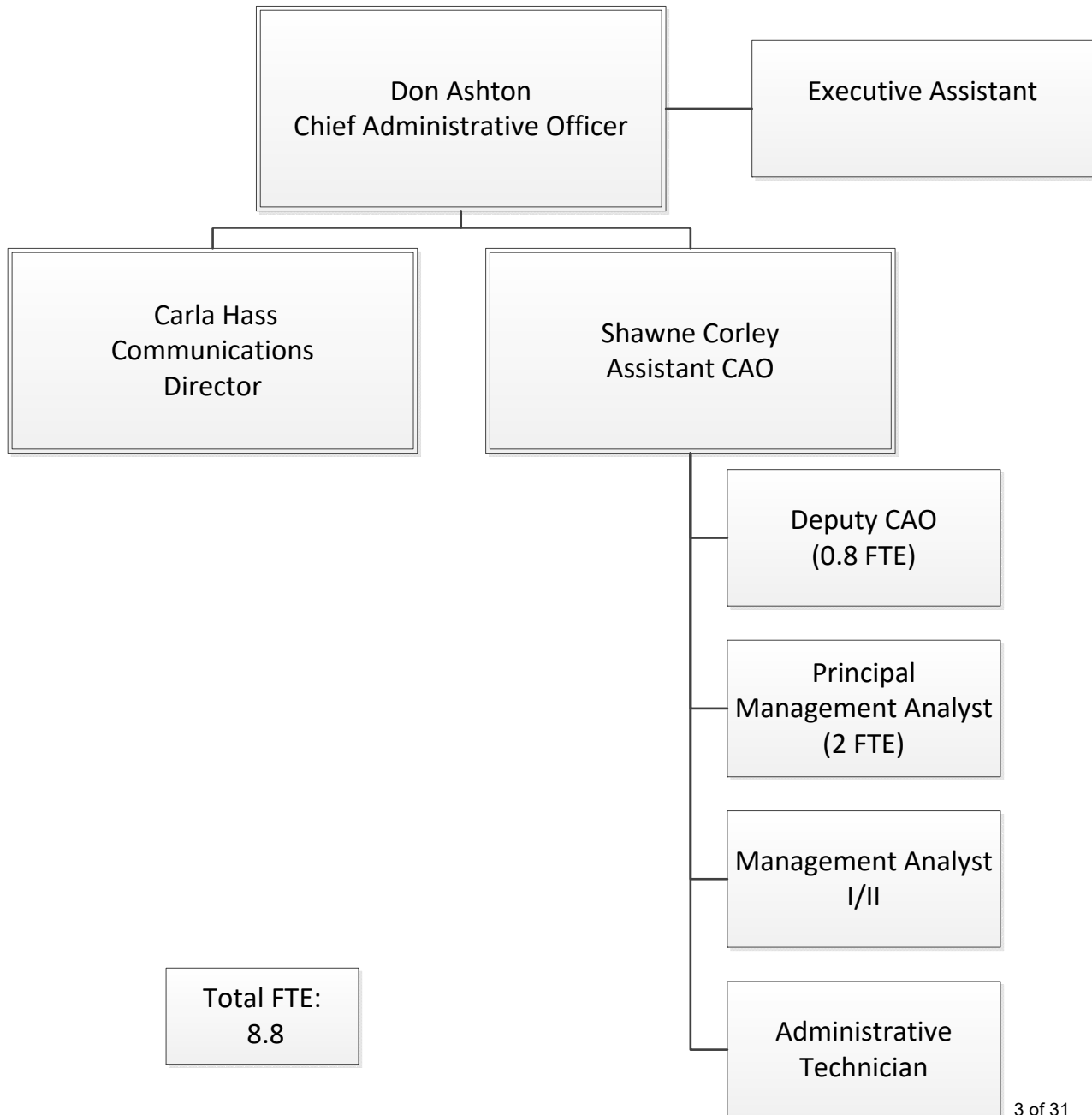


Department Organizational Charts

Table of Contents

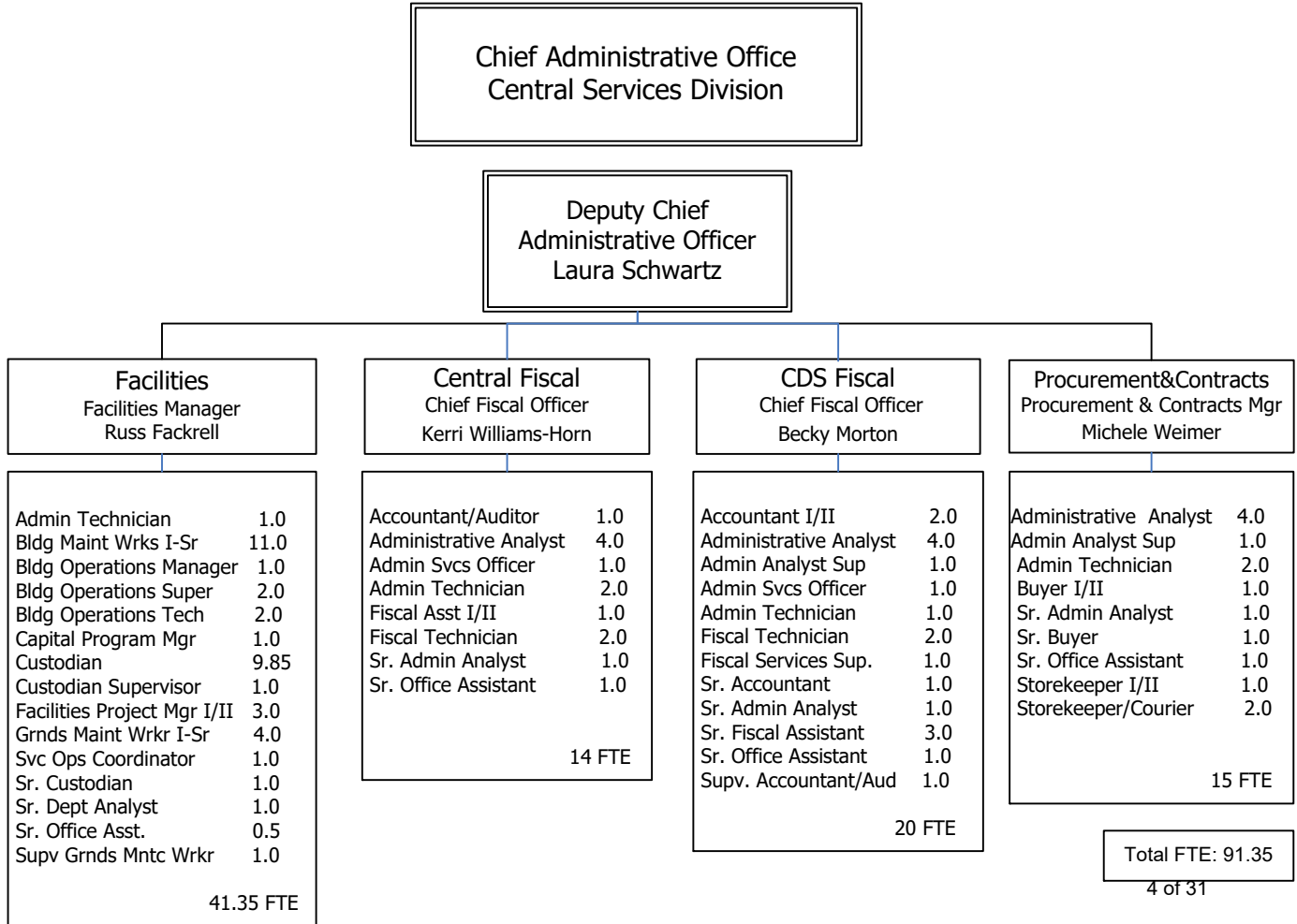
Chief Administrative Office – Administration & Budget.....	3
Chief Administrative Office – Central Services	4
Chief Administrative Office – Emergency Medical Services & Emergency Preparedness & Response	5
Chief Administrative Office – Parks	6
County Counsel.....	7
Human Resources & Risk Management	8
Information Technologies.....	9
Recorder - Clerk	10
Registrar of Voters.....	11
Treasurer – Tax Collector.....	12
District Attorney	13
Probation	14
Public Defender	15
Sheriff’s Office	16
Agriculture, Weights & Measures	17
Environmental Management.....	18
Planning and Building	19
County Surveyor	20
Department of Transportation	21
Child Support Services	22
HHS: Administration and Financial Services.....	23
Social Services.....	24
Community Services	25
Behavioral Health	26
Public Health.....	27

Animal Services.....	28
Public Guardian	29
Veteran Affairs.....	30
Library	31



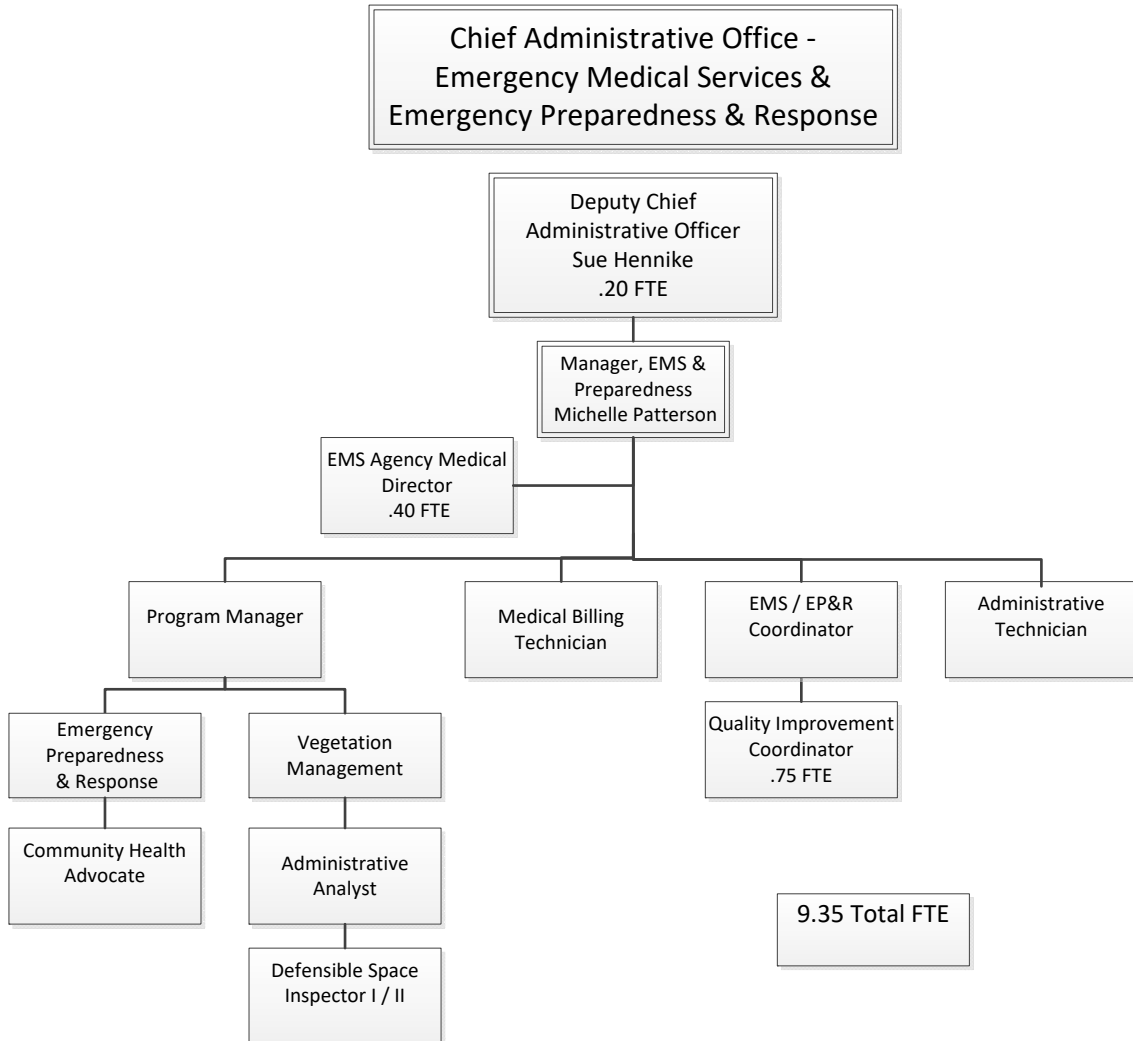
Organizational Charts

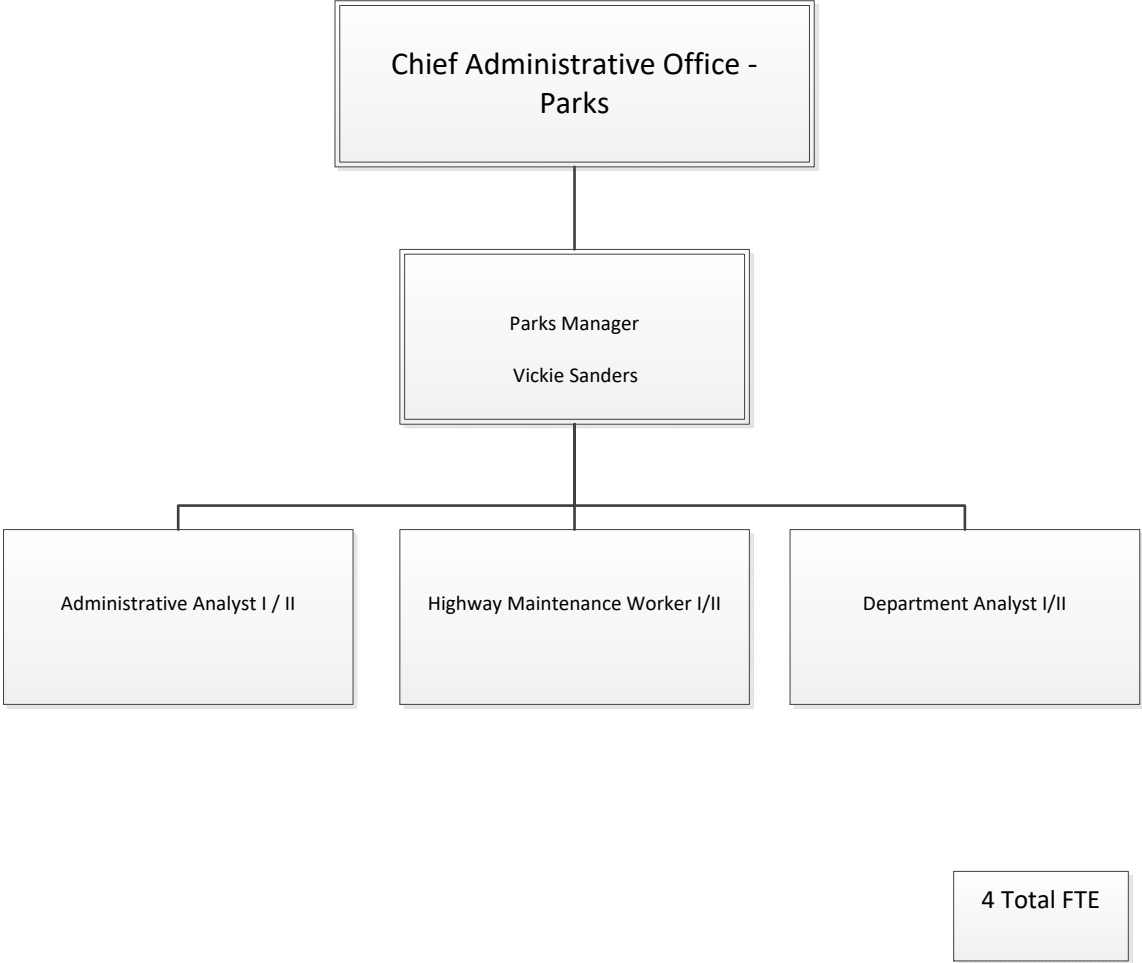
RECOMMENDED BUDGET • FY 2020-21

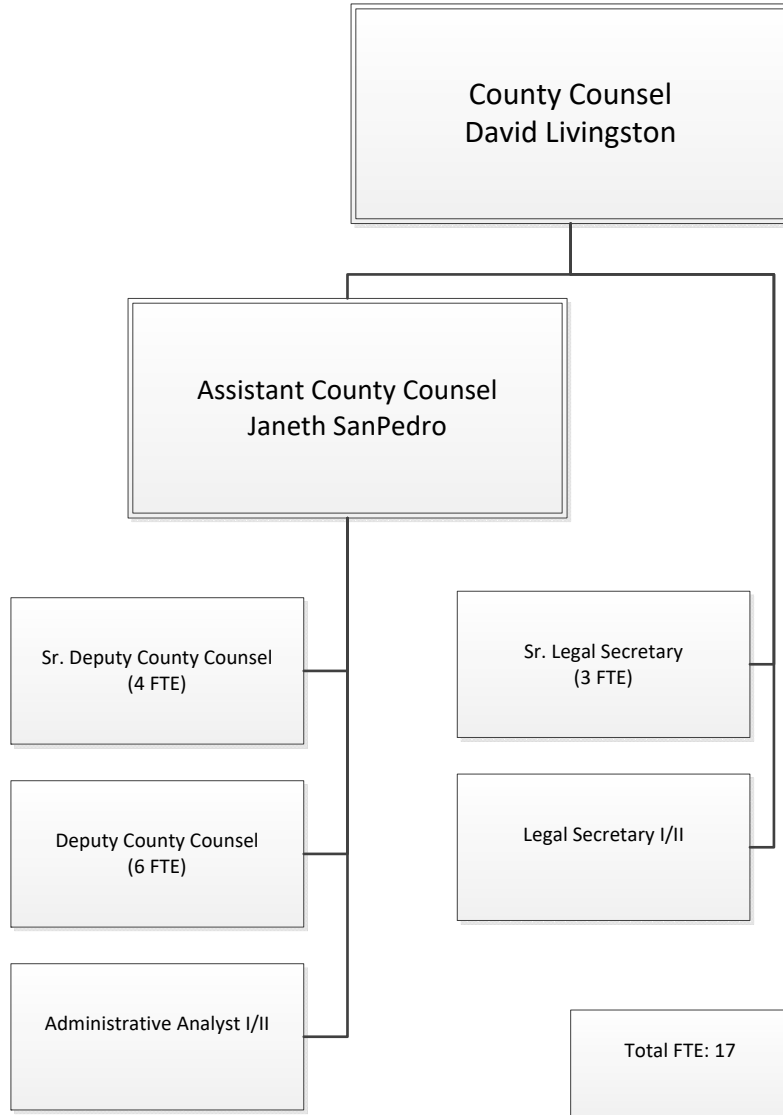


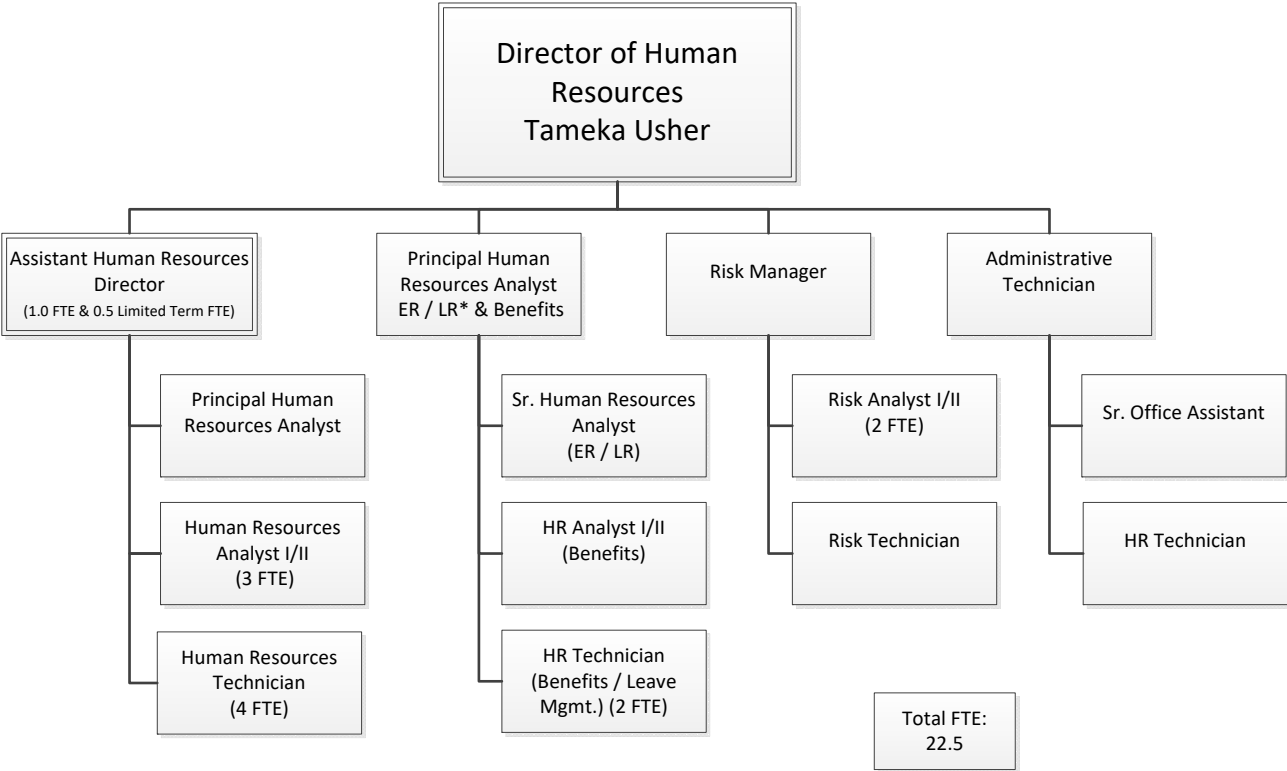
Organizational Charts

RECOMMENDED BUDGET • FY 2020-21





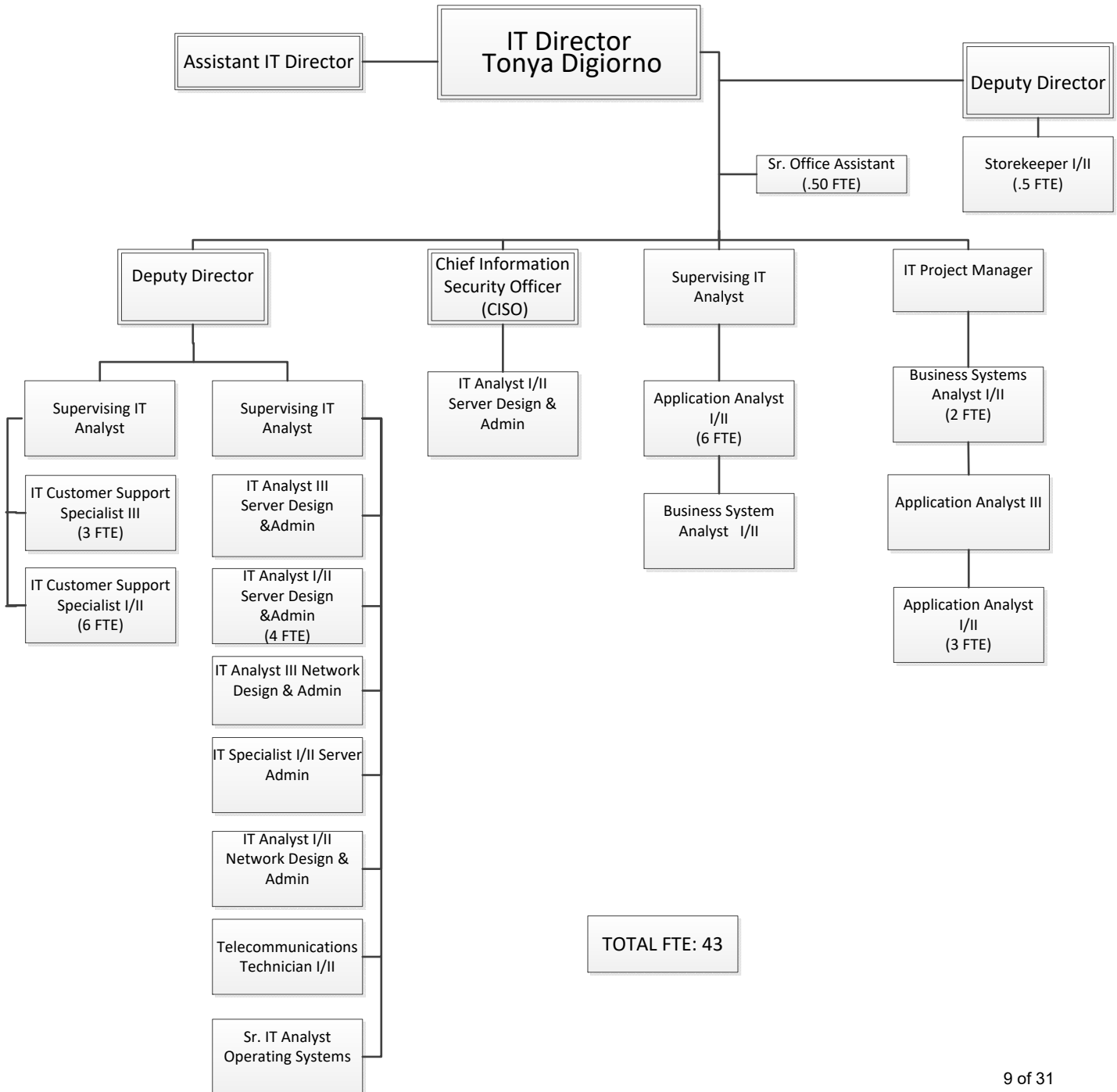




* ER/LR Employee Relations / Labor Relations

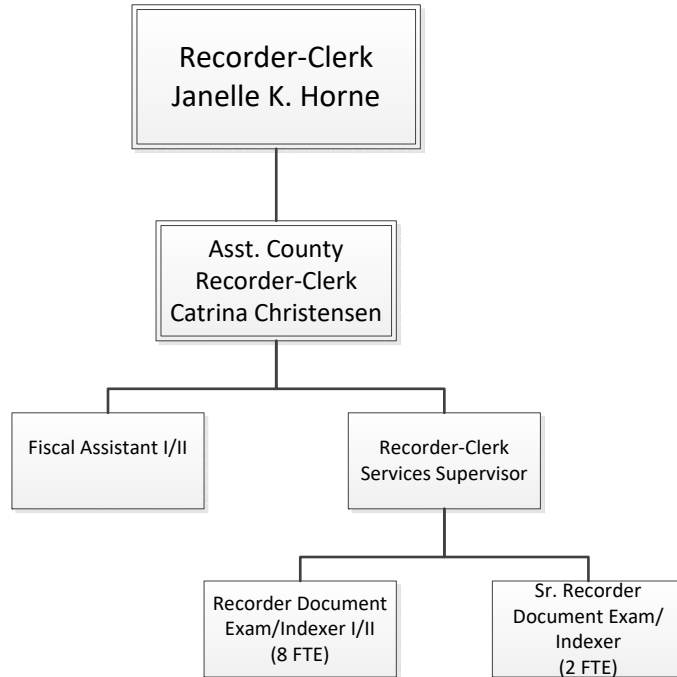
Organizational Charts

RECOMMENDED BUDGET • FY 2020-21



Organizational Charts

RECOMMENDED BUDGET • FY 2020-21

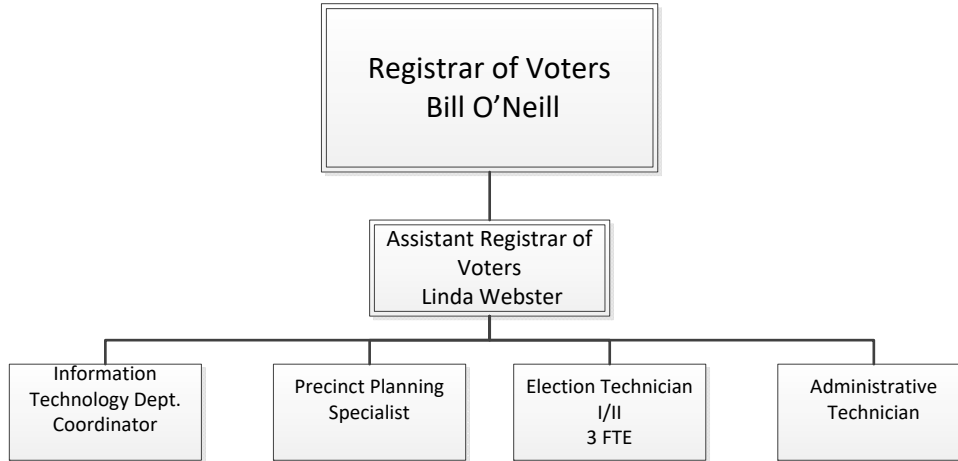


Total FTE: 14

1 FTE Rec Doc Ex-Indexer
works at the SLT Office

Organizational Charts

RECOMMENDED BUDGET • FY 2020-21



Total FTE: 8

Treasurer-Tax Collector
Karen Coleman

ADMINISTRATION

4.08 FTE

Treasurer-Tax Collector 1.0
Asst. Treasurer-Tax Collector .33
Administrative Technician 1.0
Accounting Division Manager .72
Treasury Quantitative Specialist .19
Sr. Department Analyst .18
Accountant/Auditor .31
Accountant I .25
Fiscal Technician .10

TREASURY

3.07 FTE

Asst. Treasurer-Tax Collector .22
Accounting Division Manager .28
Treasury Quantitative Specialist .58
Sr. Department Analyst .23
Accountant/Auditor .15
Accountant I .40
Fiscal Technician 1.21

TAX

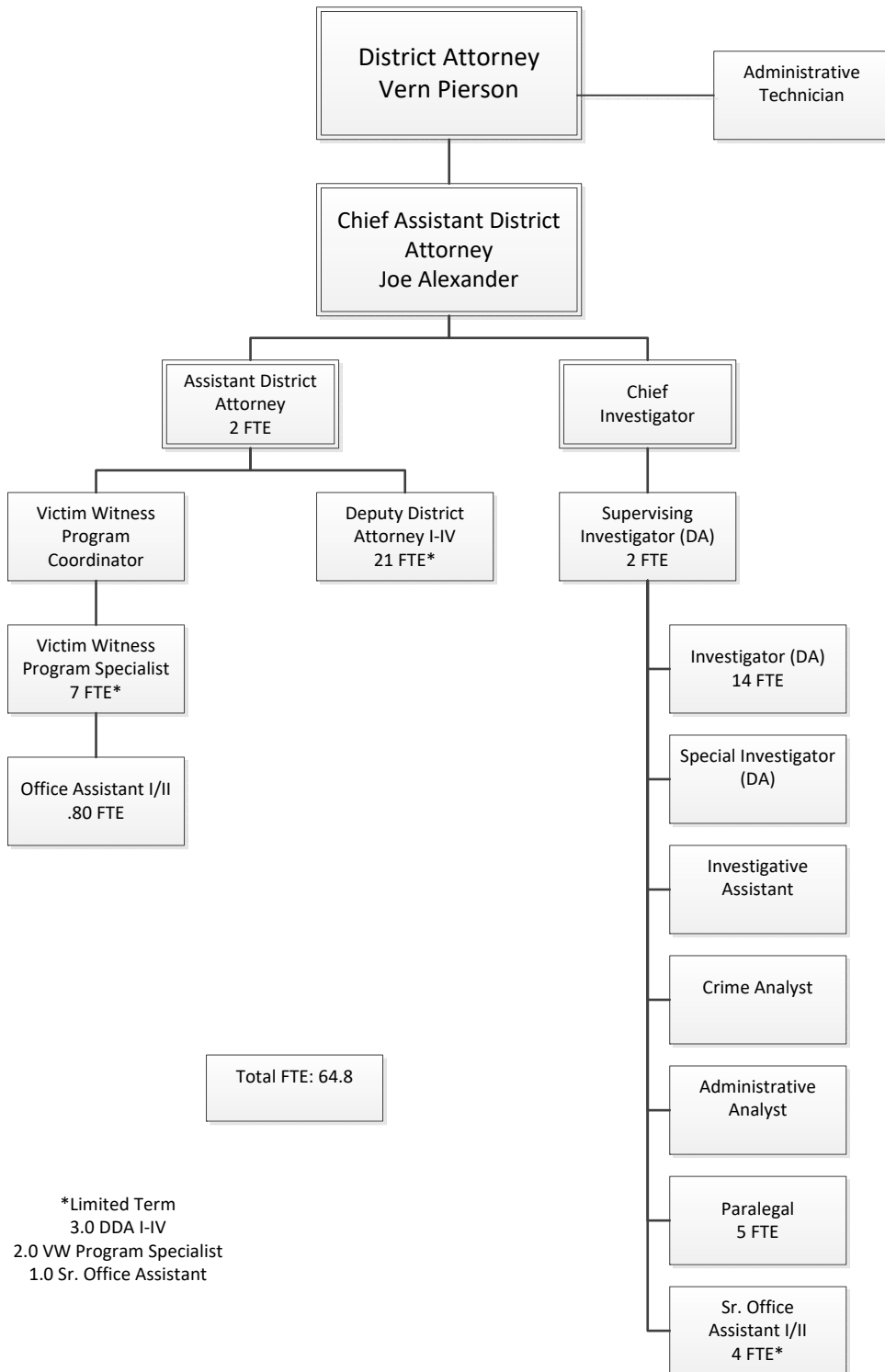
12.29 FTE

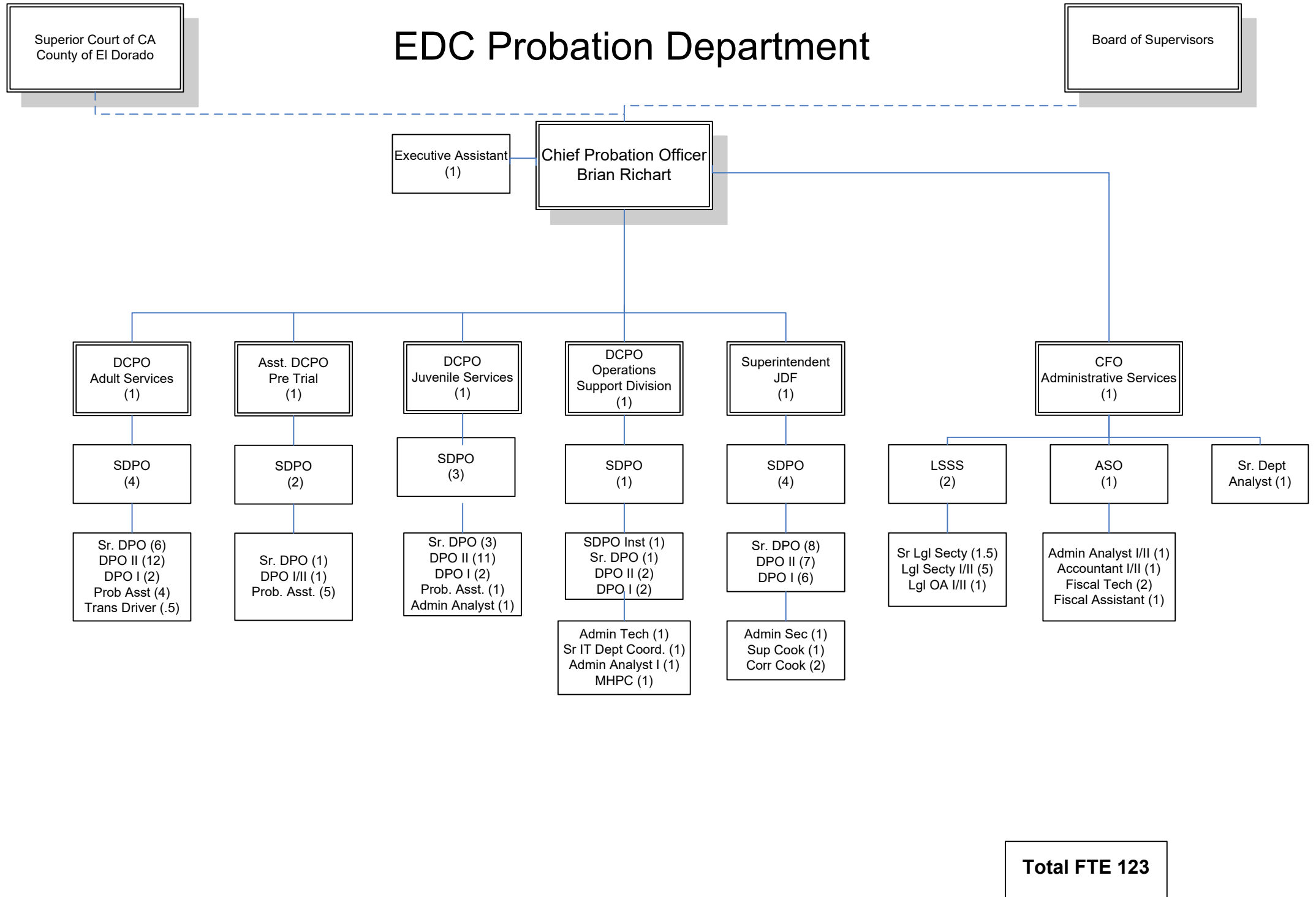
Asst. Treasurer-Tax Collector .45
Accounting Division Manager 1.0
Treasurer Quantitative Specialist .20
Sr. Department Analyst .57
Accountant/Auditor .53
Accountant I 1.35
Revenue Recovery Officer II 1.0
Sr. Revenue Recovery Officer .50
Fiscal Technician 4.81
Sr. Fiscal Assisamt 1.88

REVENUE RECOVERY

.56 FTE

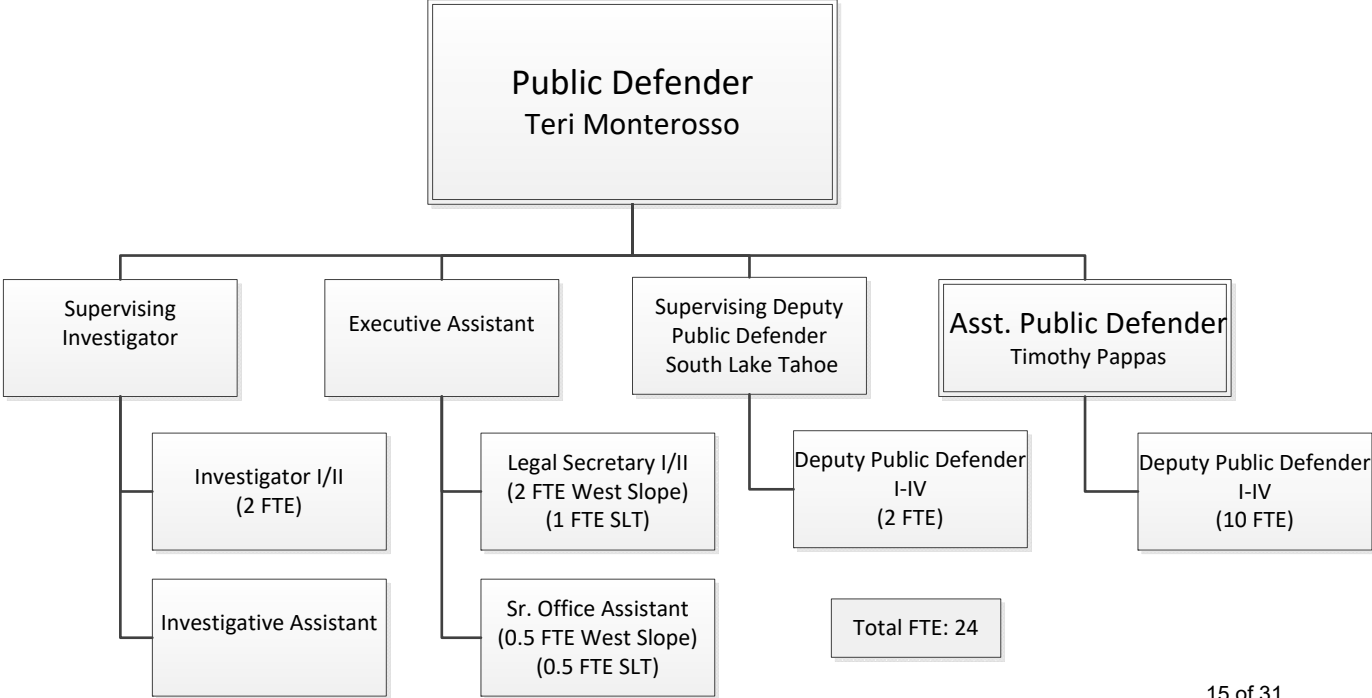
Treasury Quantitative Specialist .03
Sr. Department Analyst .02
Accountant/Auditor .01
Sr. Revenue Recovery Office .50

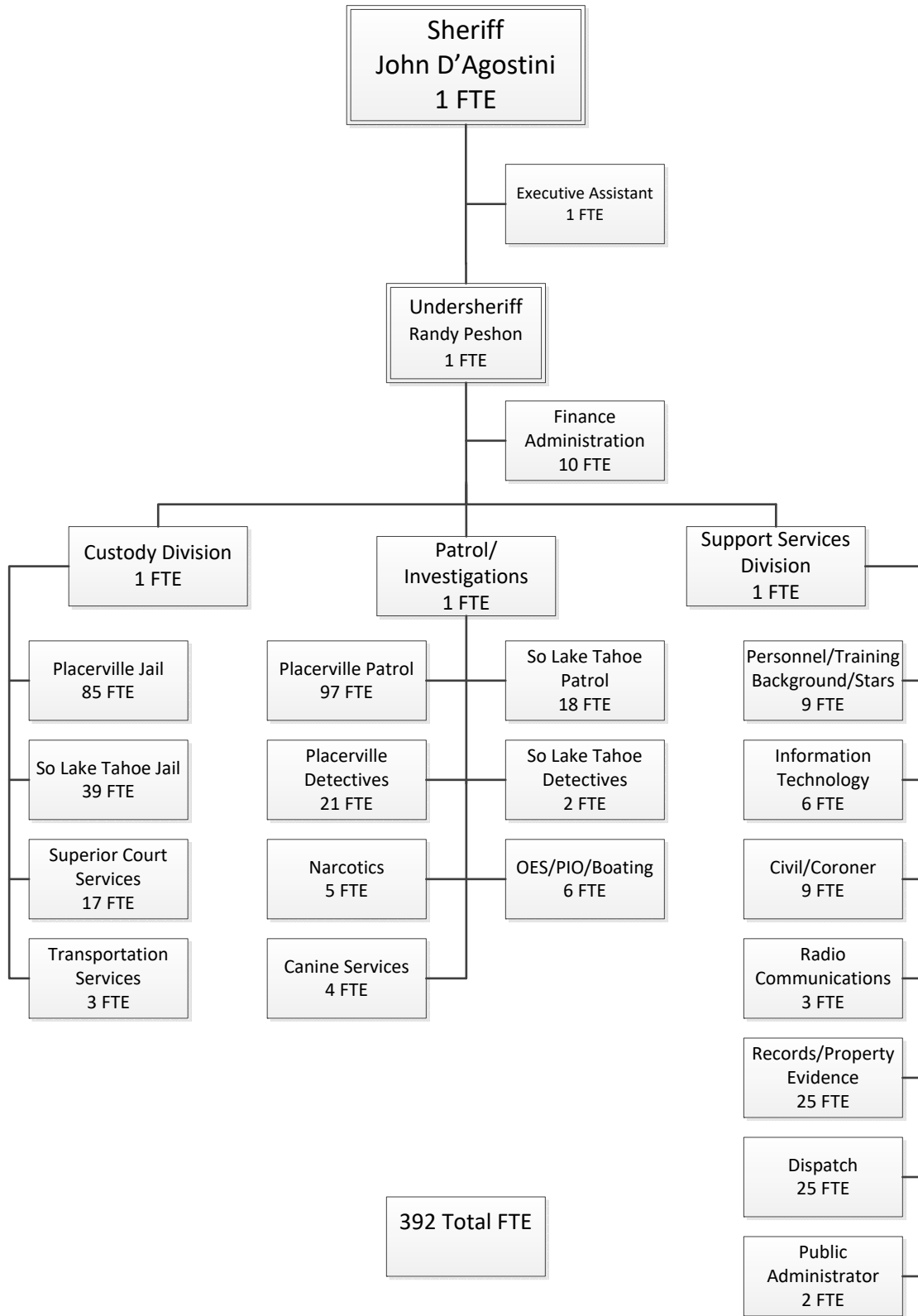




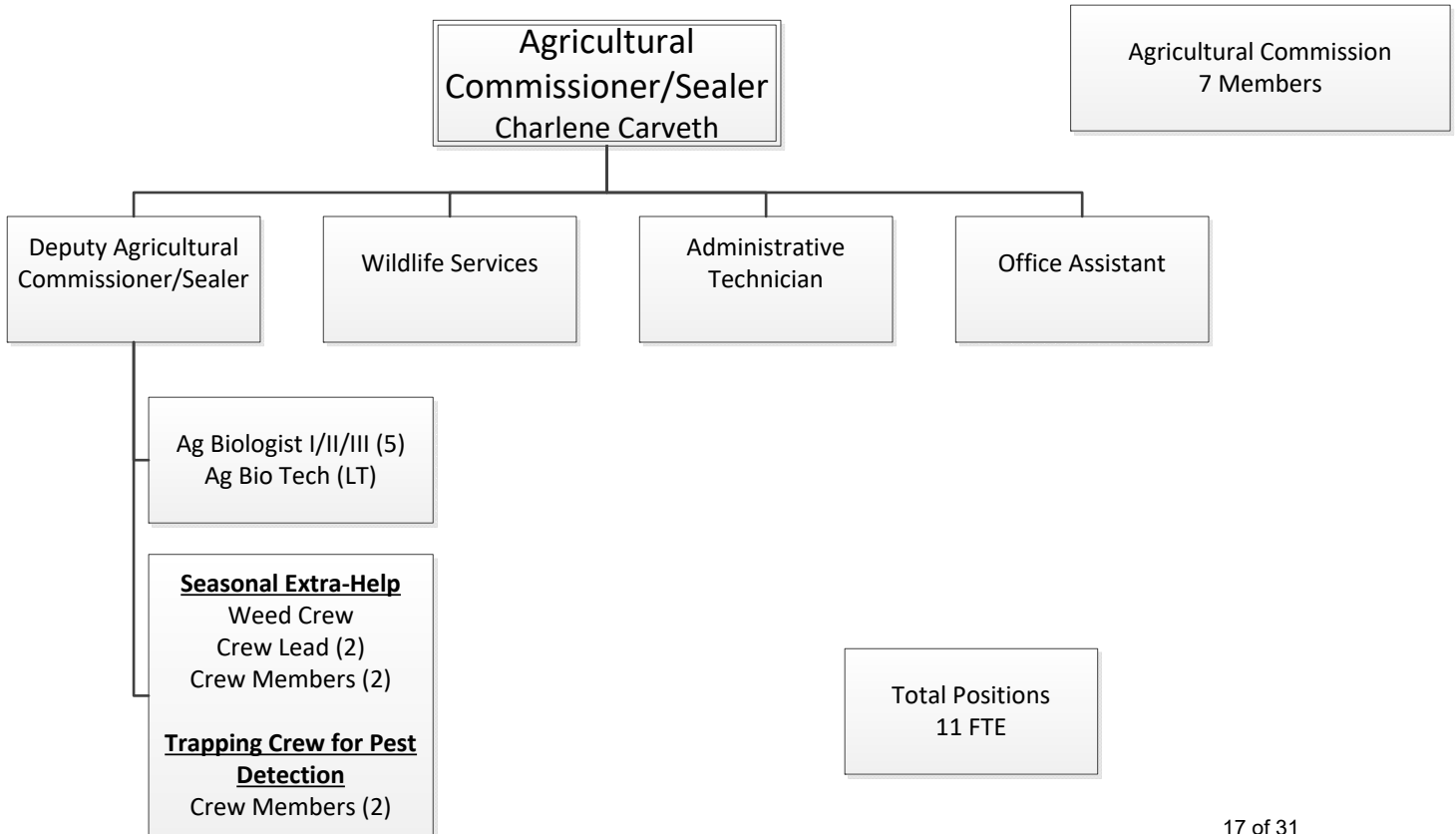
Organizational Charts

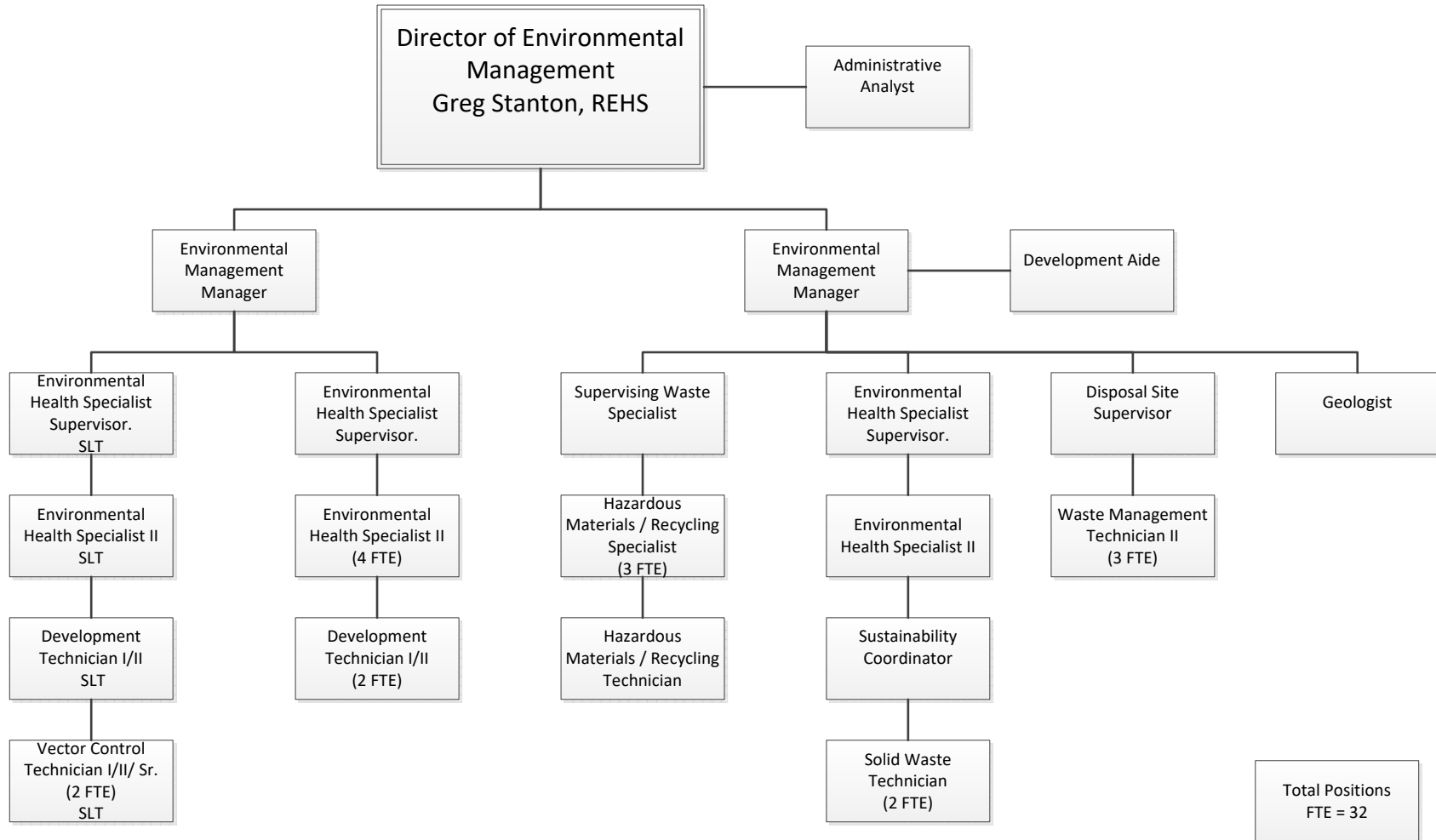
RECOMMENDED BUDGET • FY 2020-21

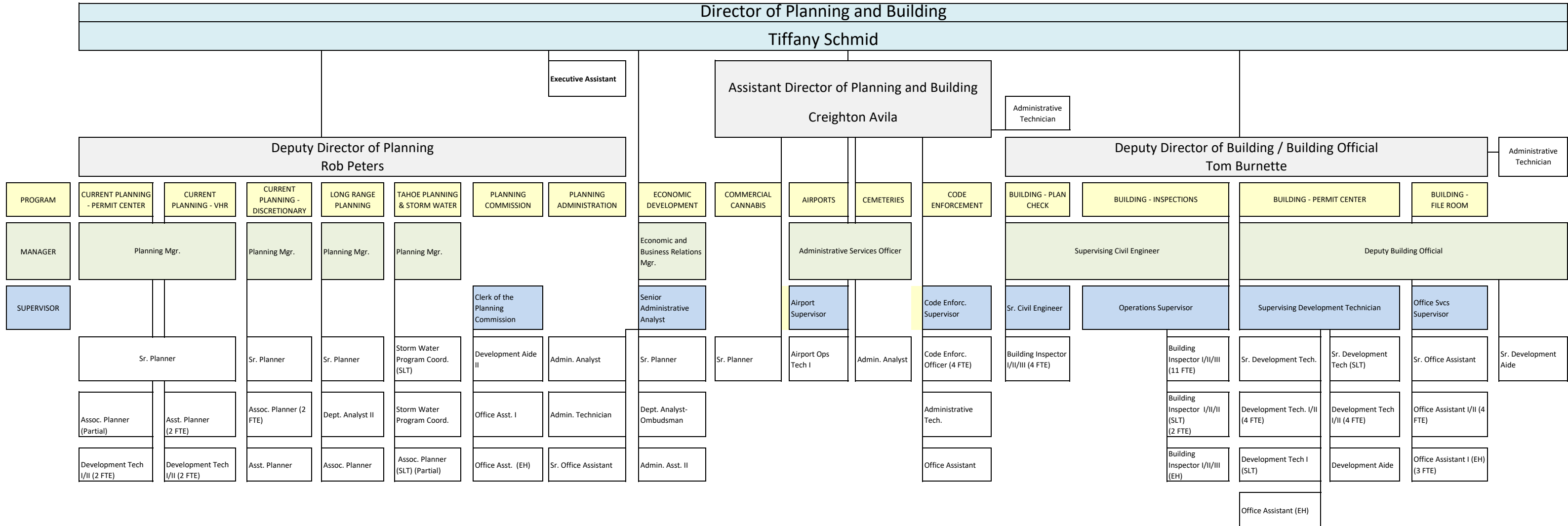


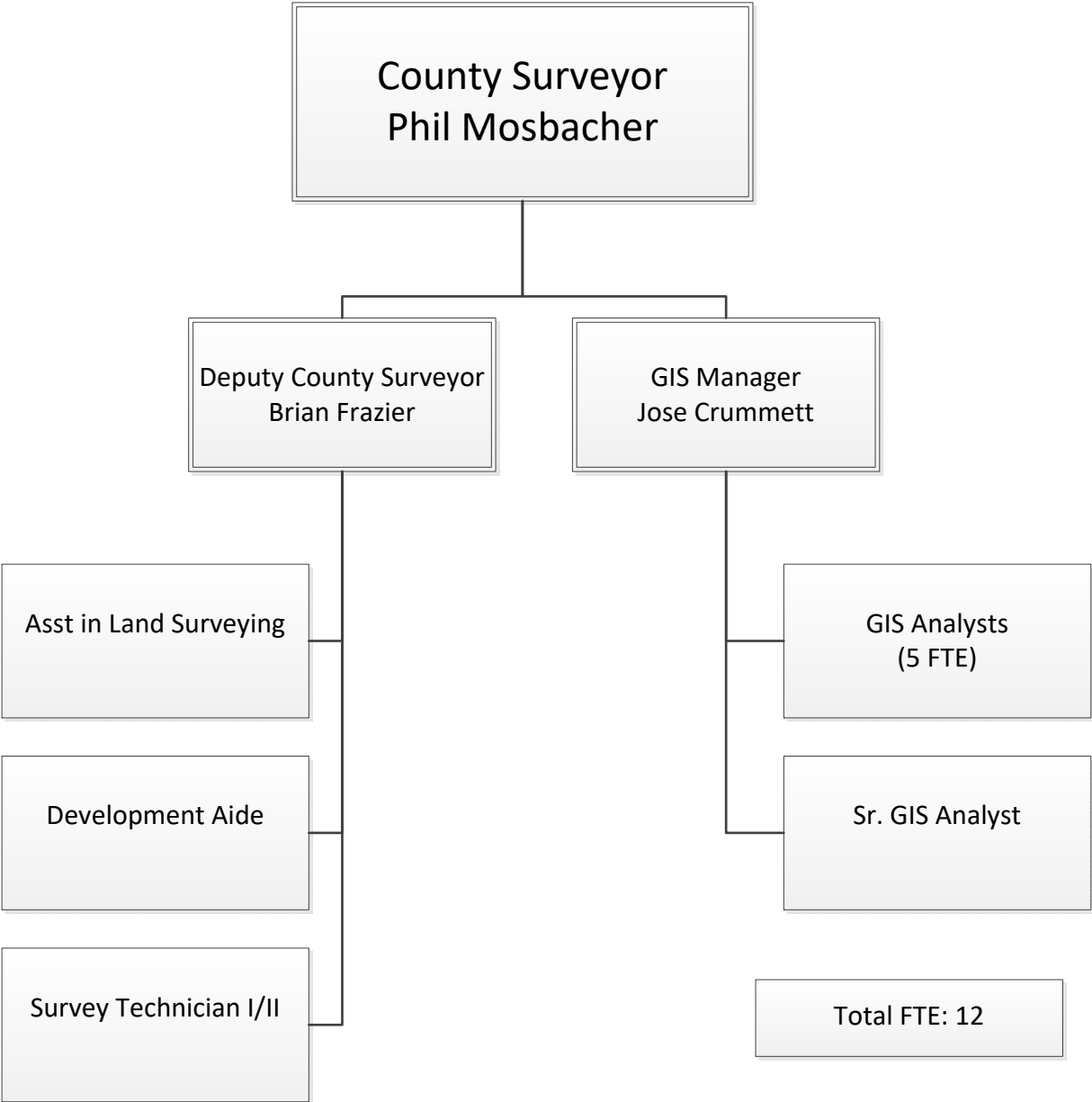


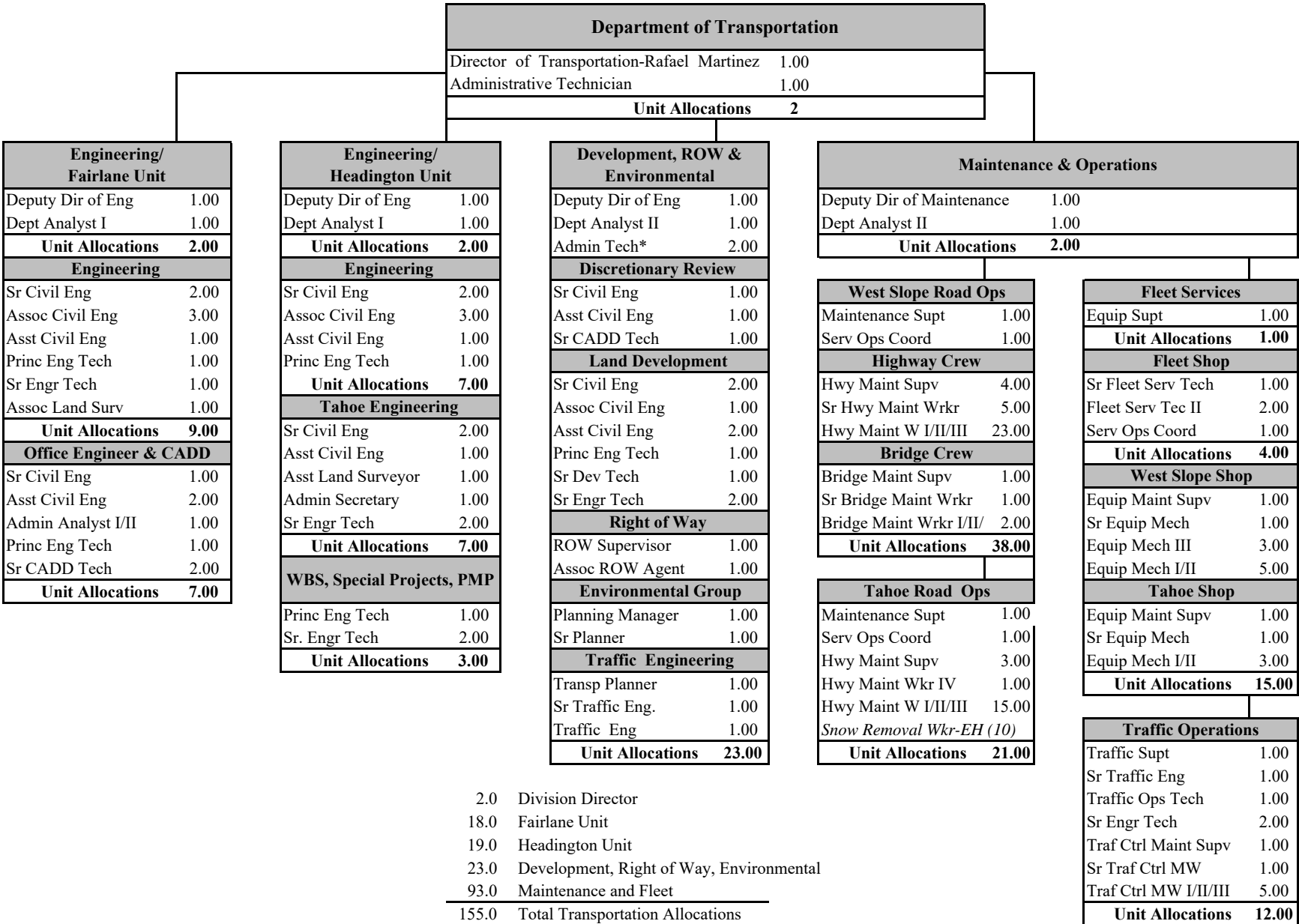
Agriculture, Weights & Measures



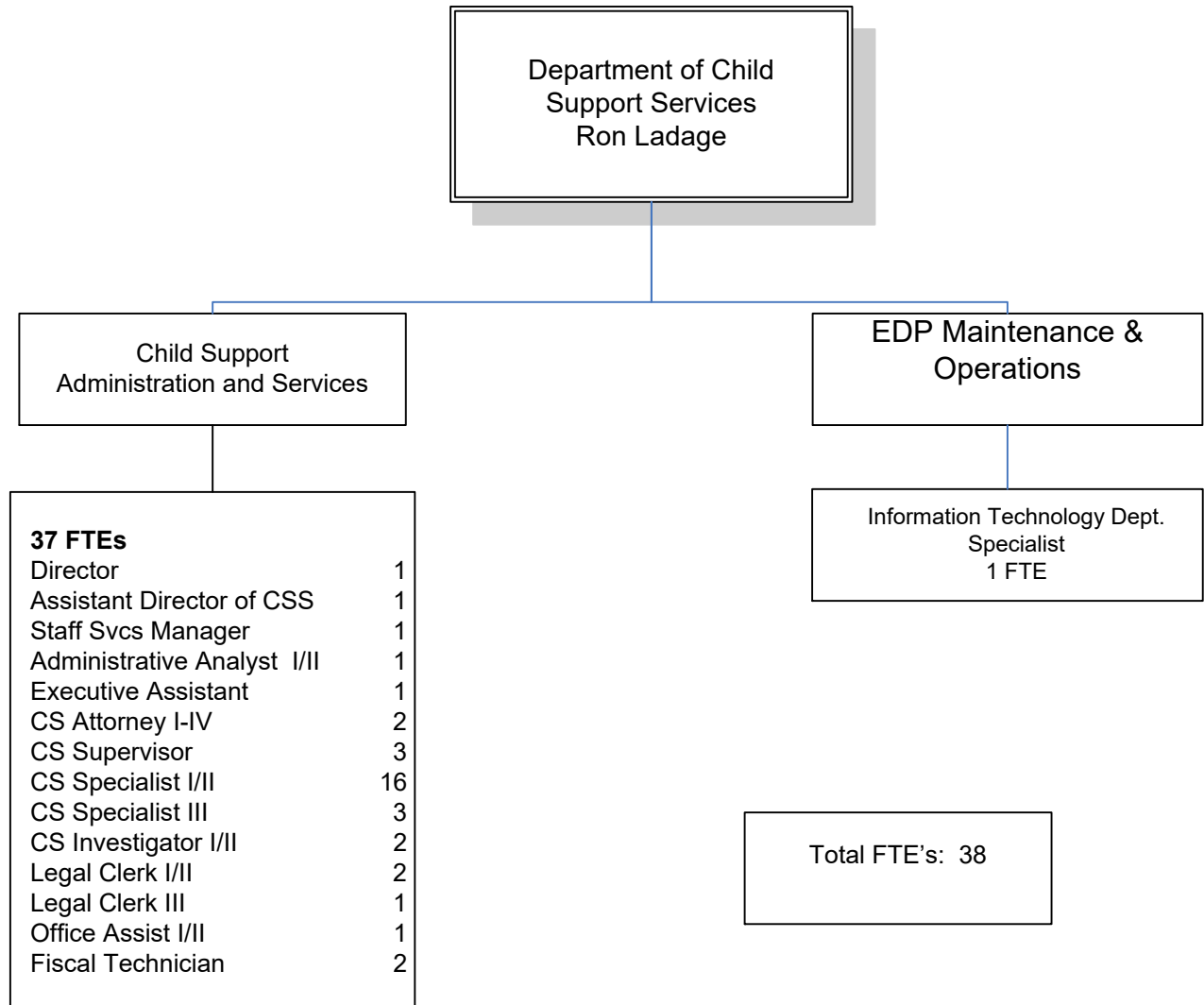








* - 1 FTE Limited Term



Health and Human Services Agency

Administration and Financial Services

FTEs

61.30

Administration

<i>Administrative, Placerville</i>		<i>22.30</i>
Director of Health & Human Services	1.00	
Assistant Director of Administration and Finance	1.00	
Program Manager	1.00	
Administrative Analyst I/II	1.00	
Administrative Services Officer	1.00	
Administrative Technician	3.00	
Department Analyst I/II	9.00	
Deputy Director, Health and Human Services	1.00	
Health Program Manager	0.30	
Office Assistant I/II	3.00	
Sr. Department Analyst	1.00	

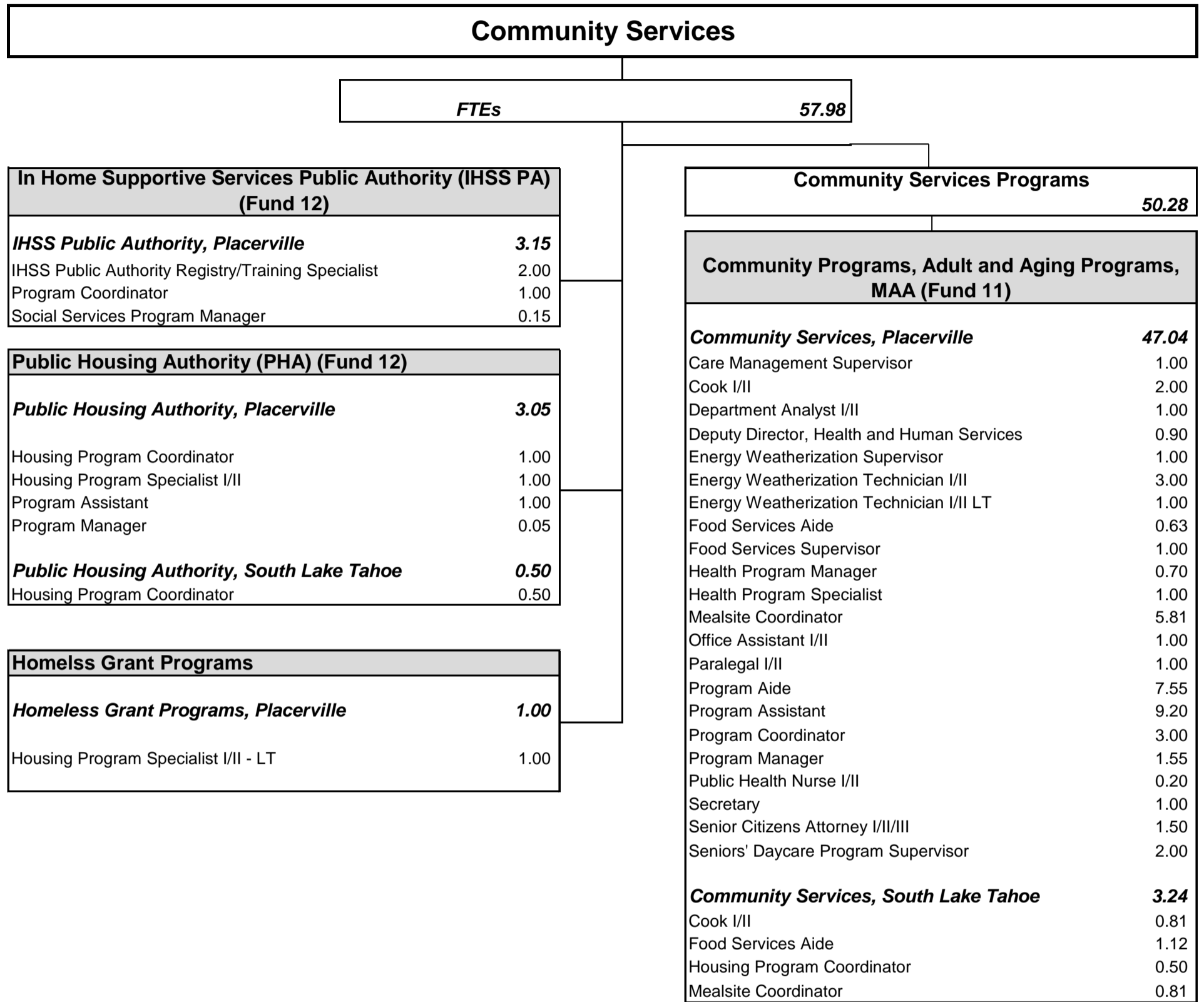
Fiscal

<i>Fiscal, Placerville</i>		<i>38.00</i>
Accountant I/II	9.00	
Chief Fiscal Officer	1.00	
Department Analyst I/II	2.00	
Fiscal Assistant I/II	3.00	
Fiscal Technician	11.00	
Program Manager	3.00	
Sr. Accountant	1.00	
Sr. Department Analyst	2.00	
Supervising Accountant/Auditor	6.00	
<i>Fiscal, South Lake Tahoe</i>		<i>1.00</i>
Fiscal Assistant I/II	1.00	

Health and Human Services Agency

Social Services	
<i>FTEs</i> 272.15	
Income Maintenance and Employment Services 162.10	Protective Services 110.05
Employment and Eligibility	CPS and APS
Emp/Eligibility, Placerville 122.50	Protective Services, Placerville 93.05
Assistant Director of Human Services 2.00	Deputy Director, Health and Human Service 1.00
Administrative Analyst I/II 5.00	Administrative Analyst I/II 1.00
Administrative Assistant 1.00	Information Systems Coordinator III 1.00
Eligibility Supervisor 10.00	Legal Clerk III 1.00
System Support Analyst 2.00	Office Assistant I/II 1.00
Eligibility Specialist Trainee/I/II 44.00	Sr. Office Assistant 8.00
Eligibility Specialist III 16.00	Office Services Supervisor 1.00
Employment & Training Worker I/II 9.00	Program Coordinator - LT 1.00
Employment & Training Worker III 5.50	System Support Assistant 1.00
Employment & Training Worker Supv 3.00	Social Services Program Manager 3.85
Office Assistant I/II 8.00	Social Services Aide 12.00
Sr. Office Assistant 7.00	Social Worker Supervisor I 3.00
Office Services Supervisor 1.00	Social Worker Supervisor II 8.00
Program Manager 2.00	Social Worker Clinician A/B 1.00
System Support Assistant 2.00	Social Worker I/II 7.00
Social Services Aide 2.00	Social Worker III 21.40
Social Worker I/II 3.00	Social Worker IV 19.80
Emp/Eligibility, South Lake Tahoe 39.60	System Support Analyst - LT 1.00
Eligibility Supervisor 3.00	Protective Services, South Lake Tahoe 17.00
System Support Analyst 1.00	Sr. Office Assistant 1.00
Eligibility Specialist Trainee/I/II 18.60	Social Services Program Manager 1.00
Eligibility Specialist III 5.00	Social Services Aide 2.00
Employment & Training Worker I/II 3.00	Social Worker Supervisor I 1.00
Employment & Training Worker Supv 1.00	Social Worker Supervisor II 1.00
Office Assistant I/II 3.00	Social Worker I/II 1.00
Sr. Office Assistant 2.00	Social Worker III 4.00
Office Services Supervisor 1.00	Social Worker IV 6.00
Program Manager 1.00	
Social Services Aide 1.00	

Health and Human Services Agency



Health and Human Services Agency

Behavioral Health

FTEs 117.05

Traditional Behavioral Health Programs 33.29 FTEs	
Placerville	29.42
Administrative Analyst I/II	0.75
Administrative Secretary	1.00
Administrative Technician	1.65
Department Analyst I/II	1.00
Department Systems Analyst	1.00
Deputy Director, Health and Human Services	1.00
Director of Mental Health	1.00
Fiscal Technician	1.00
Manager of Mental Health Programs	1.43
Medical Office Assistant I/II	4.00
Medical Records Technician	0.90
Mental Health Aide	1.71
Mental Health Clinical Nurse	0.36
Mental Health Clinician IA/IB/II	5.00
Mental Health Medical Director	0.85
Mental Health Patient's Rights Advocate	0.40
Mental Health Program Coordinator IA/IB/II	3.35
Program Manager	0.70
Psychiatric Technician I/II	0.75
Psychiatrist I/II	0.00
Public Health Nurse Practitioner	0.57
Sr. Office Assistant	1.00
South Lake Tahoe	3.87
Administrative Technician	0.95
Manager of Mental Health Programs	0.80
Medical Office Assistant I/II	0.70
Mental Health Clinician IA/IB/II	1.20
Mental Health Program Coordinator IA/IB/II	0.22

Mental Health Services Act (MHSA) 59.58 FTEs	
Placerville	43.35
Administrative Analyst I/II	1.25
Administrative Technician	1.35
Health Education Coordinator	0.28
Manager of Mental Health Programs	0.57
Mental Health Aide	4.54
Mental Health Clinical Nurse	0.64
Mental Health Clinician IA/IB/II	16.50
Mental Health Medical Director	0.15
Mental Health Program Coordinator IA/IB/II	2.09
Mental Health Worker I/II	12.00
Program Manager	0.30
Psychiatric Technician I/II	1.25
Psychiatrist I/II	1.00
Public Health Nurse Practitioner	0.43
Sr. Department Analyst	1.00
South Lake Tahoe	16.23
Administrative Technician	0.05
Manager of Mental Health Programs	0.20
Medical Office Assistant I/II	0.30
Mental Health Clinician IA/IB/II	5.80
Mental Health Program Coordinator IA/IB/II	0.78
Mental Health Worker I/II	8.00
Psychiatric Technician I/II	1.00
Supv Health Education Coordinator	0.10

Substance Use Disorder Svcs Programs 24.18 FTEs	
Placerville	19.78
Alcohol and Drug Program Division Mgr	1.00
Fiscal Technician	2.00
Health Education Coordinator	6.72
Health Program Specialist	3.00
IT Department Specialist	1.00
Mental Health Clinician IA/IB/II	3.00
Mental Health Program Coordinator IA/IB/II	0.56
Office Assistant I/II	0.50
Program Assistant	1.00
Supv Health Education Coordinator	1.00
South Lake Tahoe	4.40
Health Education Coordinator	2.50
Mental Health Clinician IA/IB/II	1.00
Supv Health Education Coordinator	0.90

Health and Human Services Agency

Public Health	
<i>FTEs</i>	65.95
Public Health Programs	
	<i>FTEs</i>
<i>Placerville</i>	<i>58.50</i>
Care Management Counselor I/II	1.00
Community Health Advocate	6.00
Administrative Analyst I/II	1.00
Deputy Director, Health and Human Services	1.00
Disease Investigtn/Contrl Specialist I/II	1.00
Epidemiologist I/II	1.00
Health Education Coordinator	2.50
Health Program Specialist	4.00
Medical Office Assistant I/II	3.80
Nutrition Services Supervisor	1.00
Nutritionist	1.20
Occupational/Physical Therapist	2.90
Program Assistant	7.20
Program Manager	1.00
Public Health Nurse I/II	14.10
Public Health Officer	1.00
Registered Nurse	1.00
Sr. Office Assistant	2.00
Supv Health Education Coordinator	1.00
Supv Occupational/Physl Therapist	0.80
Public Health Nurse Supervisor	4.00
<i>South Lake Tahoe</i>	<i>7.45</i>
Medical Office Assistant I/II	2.00
Occupational/Physical Therapist	0.25
Office Assistant I/II	1.00
Program Assistant	1.60
Public Health Nurse I/II	0.80
Public Health Nurse Practitioner	0.80
Supv Health Education Coordinator	1.00

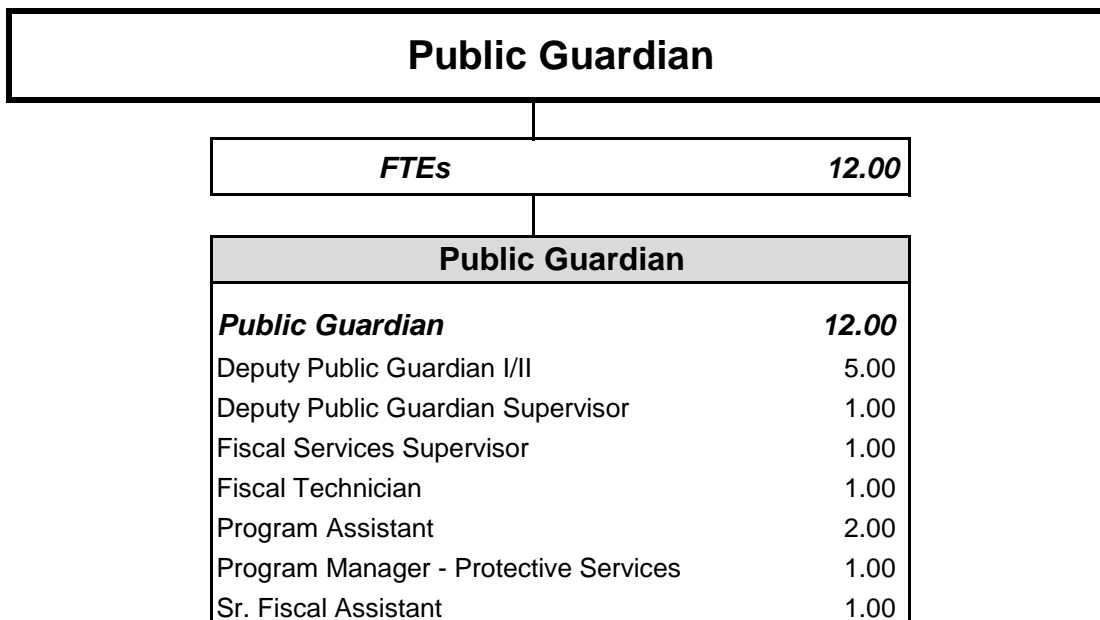
Health and Human Services Agency

Animal Services

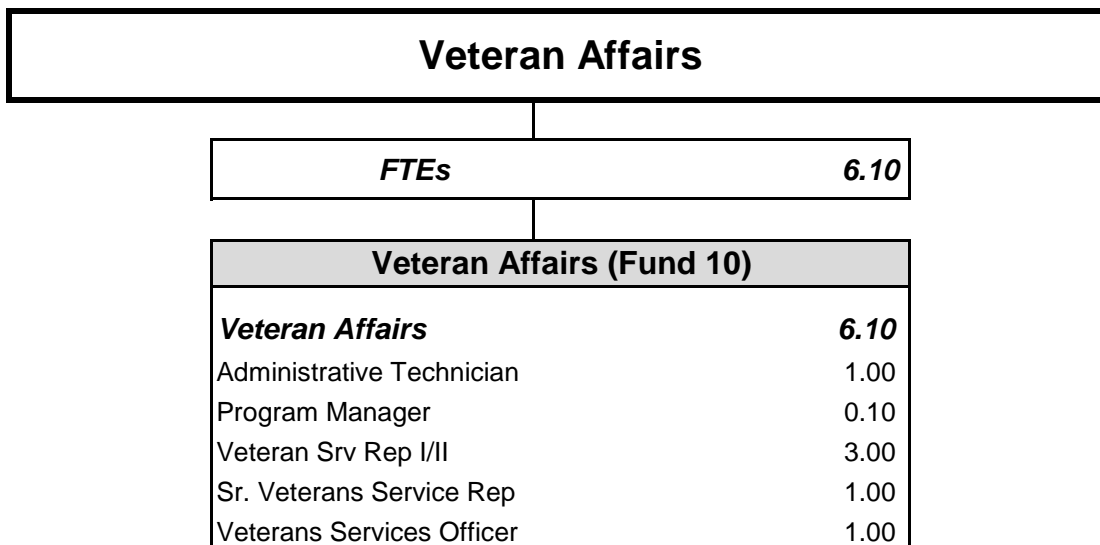
<i>FTEs</i>	<i>20.10</i>
-------------	--------------

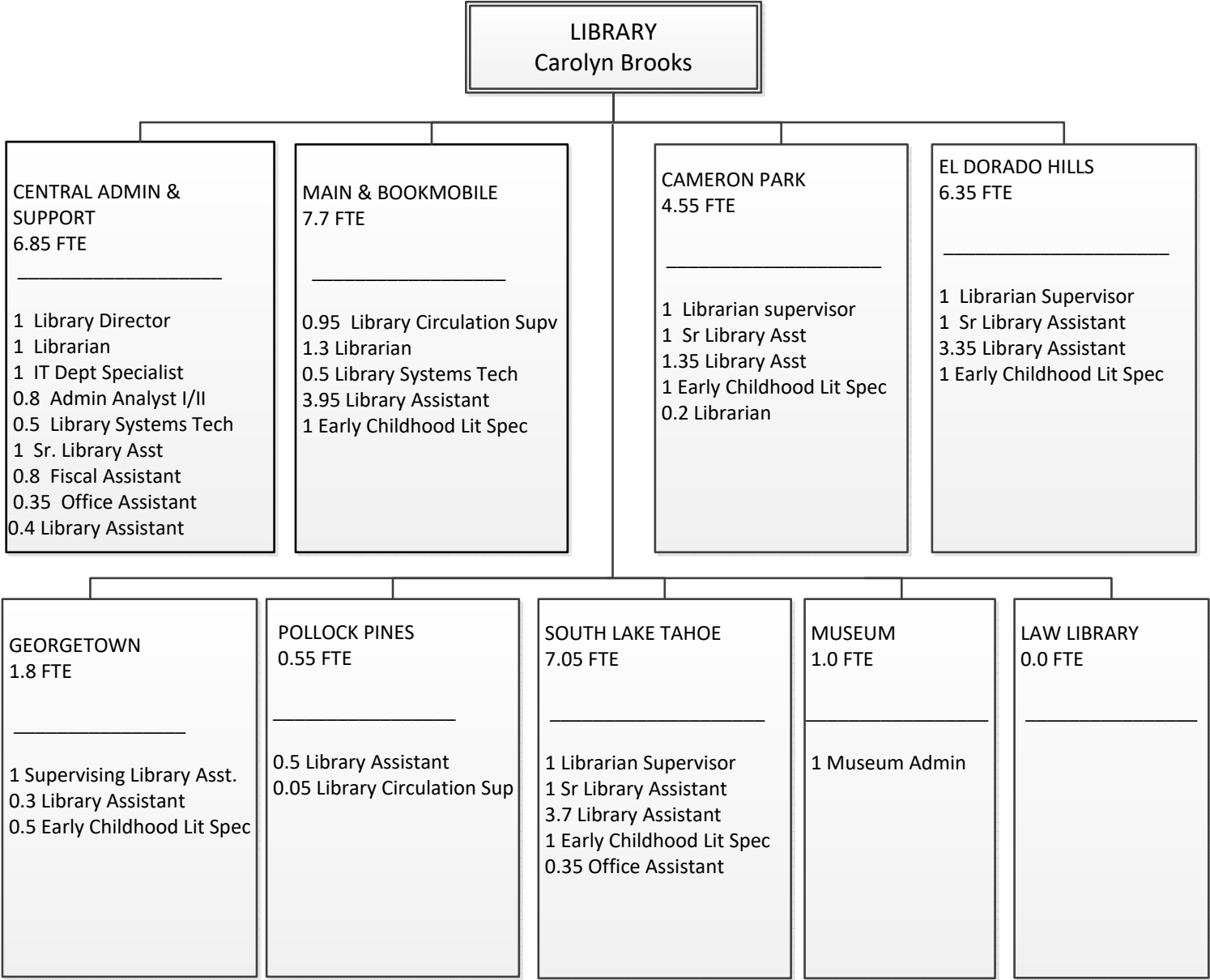
Animal Services	
	<i>FTEs</i>
Placerville	
Deputy Director, Health and Human Services	0.07
Animal Services Officer I/II	6.00
Manager of Animal Services	1.00
Animal Shelter Attendant	3.00
Animal Shelter Supervisor	1.00
Supv Animal Control Officer	0.69
Health Program Specialist	0.83
Public Services Assistant	1.00
Sr. Office Assistant	1.00
South Lake Tahoe	
Deputy Director, Health and Human Services	0.03
Animal Control Officer I/II	2.00
Animal Shelter Attendant	1.00
Supv Animal Control Officer	0.31
Health Program Specialist	0.17
Public Services Assistant	0.00
Sr. Animal Services Officer	1.00
Supv Animal Control Officer	1.00

Health and Human Services Agency



Health and Human Services Agency





Total FTE: 35.85