

# DISTRICT ATTORNEY

## Mission

The District Attorney's office is dedicated, while recognizing the dignity of all individuals, to objectively and effectively investigate and prosecute matters under the Law to achieve justice and minimize trauma to victims.

### District Attorney Financial Summary

	14/15 Actuals	15/16 Budget	16/17 Dept Requested	16/17 CAO Recommend	Change from Budget to Recommend	% Change
Fines, Forfeitures	17,738	21,500	12,500	12,500	(9,000)	-42%
State	1,865,766	1,863,426	1,866,108	1,875,797	12,371	1%
Federal	106,047	295,351	295,351	295,351	-	0%
Charges for Service	37,357	45,500	35,500	35,500	(10,000)	-22%
Misc.	3,067	-	2,500	2,500	2,500	0%
Other Financing Sources	734,778	702,054	631,359	716,671	14,617	2%
<b>Total Revenue</b>	<b>2,764,753</b>	<b>2,927,831</b>	<b>2,843,318</b>	<b>2,938,319</b>	<b>10,488</b>	<b>0%</b>
Salaries and Benefits	7,820,188	8,564,715	8,928,005	8,654,629	89,914	1%
Services & Supplies	794,700	600,564	757,702	763,702	163,138	27%
Other Charges	6,881	52,500	52,500	52,500	-	0%
Fixed Assets	38,261	10,000	-	-	(10,000)	-100%
Operating Transfers	706	-	34,000	34,000	34,000	0%
Intrafund Transfers	72,196	67,435	54,423	54,423	(13,012)	-19%
Intrafund Abatements	(226,204)	(476,000)	(350,000)	(425,000)	51,000	-11%
<b>Total Appropriations</b>	<b>8,506,728</b>	<b>8,819,214</b>	<b>9,476,630</b>	<b>9,134,254</b>	<b>315,040</b>	<b>4%</b>
<b>NCC</b>	<b>5,741,975</b>	<b>5,891,383</b>	<b>6,633,312</b>	<b>6,195,935</b>	<b>304,552</b>	<b>5%</b>
<b>FTE's</b>	<b>61</b>	<b>60</b>	<b>60</b>	<b>60</b>	<b>-</b>	<b>0%</b>

### Source of Funds

Fine, Forfeiture & Penalty (\$12,500): Includes Bad Check Restitution (\$2,500) and Suspended Drivers License (\$10,000)

State Intergovernmental (\$1,875,797): Includes revenue from Proposition 172 – Public Safety Sales Tax (\$979,000), Vehicle Theft Allocation (\$197,000), Office of Emergency Service (\$89,000), Office of Traffic Safety (\$450,000), and Victim Witness Claims (\$158,000).

Federal Intergovernmental (\$295,351): Primarily revenue from Federal Office of Emergency Services (\$278,000).

Charges for Service (\$35,500): Includes Blood Draw revenue (\$35,000), and Misc Court Fee revenue (\$500).

Misc (\$2,500): Miscellaneous fees such as civil subpoena fees.

Operating Transfers (\$716,671): Includes revenue from special revenue funds to support the following programs – Auto Fraud (\$296,000), Workers Compensation (\$298,000), Proposition 64 (\$20,000), Real Estate Fraud (\$39,000), and Environmental (\$14,500).

Net County Cost (\$6,195,935): The Department is primarily funded with discretionary General Fund tax revenue. These revenues are collected in

## DISTRICT ATTORNEY

Department 15 – General Fund Other Operations.

### Use of Funds

Salaries & Benefits (\$8,654,629): Primarily comprised of permanent salaries (\$5,480,000), retirement (\$1,431,500) and health insurance (\$833,000).

Services & Supplies (\$763,702): Primarily comprised of insurance premium (\$65,000), professional services (\$84,500), medical & sobriety (\$35,000), building rent (\$72,000), vehicle rent (\$75,000), fuel (\$40,000), utilities (\$30,000), and transportation/travel (\$20,000).

Other Charges (\$52,500): Charges from other County departments for misc. activities.

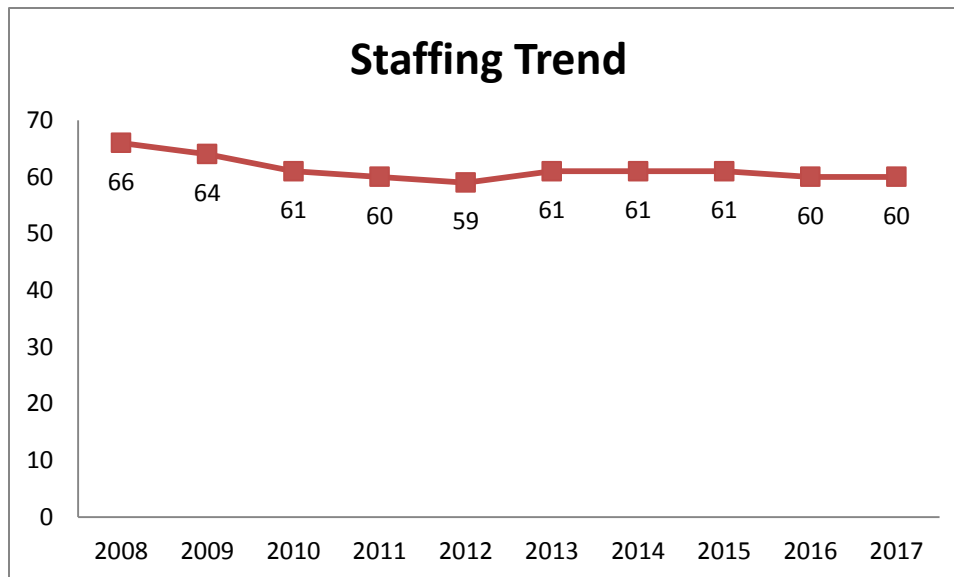
Operating Transfer (\$34,000) – Transfer to Fleet for one vehicle purchase.

Intra-fund Transfers (\$54,423): Includes charges from other departments primarily from the CAO's office for fiscal services (\$40,000), and other charges for stores, mail and building maintenance.

Intra-fund Abatements (\$425,000): Funding from Human Services for Welfare Fraud Services.

### Staffing Trend

Staffing for the District Attorney over the past ten years has gone from 55 in FY 2005-06 to 59.6 in FY 2015-16 based on the approved budget. The District Attorney office consists of 49.6 FTE in the Placerville office, and 10.0 FTE in the South Lake Tahoe Office.



## DISTRICT ATTORNEY

<b>2016-17 Summary of Department Programs</b>				
	Appropriations	Revenues	Net County Cost	Staffing
Automobile Insurance Fraud	296,048	296,072	(24)	2.10
Core Prosecution	7,859,894	1,934,187	5,925,707	48.45
Environmental Crimes	14,580	14,580	-	0.15
Proposition 64	68,935	20,000	48,935	0.45
Real Estate Fraud	38,581	38,581	-	0.25
Victim Witness Assistance	296,287	178,310	117,977	3.80
Victim Witness Claims	165,083	158,349	6,734	1.95
Worker's Comp Insurance Fraud	394,846	298,240	96,606	2.45
<i>TOTAL</i>	<i>9,134,254</i>	<i>2,938,319</i>	<i>6,195,935</i>	<i>59.60</i>

### Program Summaries

#### *Automobile Insurance Fraud*

The El Dorado County District Attorney's Auto Fraud Unit is made up of deputy district attorneys and district attorney investigators who work closely with the California Department of Insurance, California Department of Motor Vehicles, Insurance Investigators and the Arson Task force in the prevention, investigation and prosecution of various forms of automobile insurance fraud. The Auto Fraud Unit investigates not only the typical auto insurance fraud and perjury case (where an individual presents a false or fraudulent claim for non-existent injuries or damages) but also complex schemes involving car dealership fraud and conspiracy to defraud multiple customers relating to the sales, transfers, and loan payoffs concerning the purchase of new and used vehicles. This program is funded on an annual basis through a grant application to the State Department of Insurance.

#### *Core Prosecution*

- **Child Abuse:** The Special Investigator coordinates and conducts interviews of children involved in child abuse cases.

This employee is also a vital part of the Multidisciplinary Interview Center as well as assisting with victim coordination on the major felony cases.

- **Core Prosecution:** The main functions of this unit are to prosecute adult and juvenile offenders for criminal offenses, evaluate law enforcement reports and documents, assist in search warrant preparation, prepare and file legal briefs and memoranda relating to prosecution activities and appeals, conduct original and supplemental investigation of cases, prepare for trials, conduct trials, post-trial and sentencing hearings and appeals.

Funding to support the core functions of the District Attorney's Office come mainly from Proposition 172 - Public Safety Sales Tax. Other supplemental funding comes from Vehicle Theft Allocation (estimated) and the Suspended Driver's License Program (SDLP).

- **Multi-Disciplinary Interview Center (MDIC):** The User Agencies comprised of the Sheriff, Placerville Police Department, Department of Human Services and District Attorney work

## DISTRICT ATTORNEY

---

together toward the mutual goal of facilitating the investigation of child abuse cases in order to minimize the trauma to child victims and their families residing in the western portion of El Dorado County and to maximize the effectiveness of criminal prosecution.

- Alcohol and Drug Impaired Vertical Prosecution Program: This program has one Deputy District Attorney and one Investigator who are assigned to prosecute alcohol and drug impaired driving cases, as well as travel and training costs. These costs are offset with grant funding from the State Office of Traffic Safety. This grant was first awarded in FY 12-13.
- Elder Abuse Prosecution: – Deputy District Attorney's and Investigators work together with the Elder Protection Unit formed in 2006 to investigate and prosecute Elder Abuse Cases.
- SB 90: As required by law, the District Attorney's office is mandated by the State of California to appear on behalf of the District Attorney's office for cases where defendants were convicted of a crime and classified as one of the following: Sexually Violent Predator, Mentally Disordered Offender, Not Guilty By Reason of Insanity. The Deputy District Attorney appears at recommitment hearings to insure that the offender is not released back into the community.

Another subset of the SB 90 program is Child Abduction and Recovery. In most instances these abductions involve a parent that does not have custody of the child(ren) and has taken them out of the county/state. The investigator works with families and law enforcement agencies to recover the child and return them to their legal guardian.

- Sexual Assault/Domestic Violence: This unit currently covers all of the adult sexual assault, child sexual assault, child pornography, child abuse, and sexual registrant violators or the entire county. This unit also handles all of the domestic violence cases on the Western Slope.

Due to the extremely sensitive nature these cases are vertically prosecuted. Deputy district attorney's spend a significant amount of time meeting with victims and their families. These cases are all extremely sensitive and involve substantial time outside of the courtroom preparing for trial and conducting follow up investigations. Most of these cases result in prison sentences. Many involve potential life sentences and end up going to trial.

- Cold Case Homicides: Currently, there are approximately 53 cold case homicides to date. Of the 53 cases, 76% have been identified by the El Dorado County Sheriff's Office to have occurred in the last six years. The remaining 24% reside with the South Lake Tahoe Police Department. These figures do not include cold sexual assault cases which to date have not been identified.

One of the unique characteristics of cold homicide cases is that often the killer is a serial killer. In many cases there is evidence to indicate that the defendant(s) were responsible for other deaths that were never prosecuted. Due to increased technology in DNA testing the potential of bringing the killers to justice is now a possibility.

### *Environmental Crimes*

Unit provides the investigation and prosecution of environmental cases. The El Dorado County District Attorney's

## DISTRICT ATTORNEY

---

Environmental Unit made up of deputy district attorneys and district attorney investigators who work closely with various California and County Agencies including, El Dorado County Environmental Management, Code Enforcement, Department of Transportation, and California Department of Fish & Game, California Air Resources Board, California Attorney General's Office, California District Attorney Association, State Water Resources Control Board, Lahontan Regional Water Quality Control Board, California Department of Forestry, as well as statewide cases with various other District Attorney's Offices. This unit is responsible for review and filing of environmental cases throughout El Dorado County. This unit investigates various forms of environmental crimes, including Hazardous Waste & underground storage tank (UST) violations, Hazardous Material Business Plan violations (which put our first responders at risk to hazardous waste exposure), and illegal/improper release of deleterious materials to state waters and rivers in El Dorado County. Moreover, the unit files both criminal and civil complaints against individuals and businesses who are committing violations of various environmental protection statutes - including civil Business and Professions Code section 17200 cases concerning unlawful business practices.

Funding for this program is achieved through the use of defendant judgments that are deposited into a trust fund. These funds are ongoing as cases are prosecuted on an annual basis. The total amount of judgments can vary depending on case load within the fiscal year.

### *Proposition 64*

The El Dorado County District Attorney's Consumer Fraud Unit is made up of deputy district attorneys and district attorney investigators who work closely with various

California and County Agencies including, Amador, Sacramento and Yolo County District Attorney's Offices, the California Department of Corporations, California Department of Motor Vehicles, California Department of Weights & Measures, California Department of Forestry, California Department of Home Furnishings, California Bureau of Automotive Repair, and the El Dorado County Code Enforcement and Department of Agriculture, in the investigation and prosecution of various forms of consumer fraud and unlawful business practices. Further, this unit is involved with review and handling all of the District Attorney Fraud Hotline and Consumer Fraud Complaints, as well as community outreach and fraud alerts concerning current fraud schemes and tactics. This unit investigates unlawful business practices in various forms, including cases against companies who have been short-selling underweight product for years, and businesses that have been defrauding customers through false advertising and mislabeling of products. Moreover, the unit files both criminal and civil complaints against individuals and businesses who are committing violations of various consumer protection statutes - including civil Business and Professions Code section 17200 cases concerning unlawful business practices. This program is funded through the use of funds collected from defendant judgments.

### *Real Estate Fraud*

Unit provides the investigation and prosecution of Real Estate Fraud. The funding for Real Estate Fraud is ongoing. As the real estate instruments specified under GC 27388 are recorded, a \$3.00 fee is assessed with 90% of the fee being deposited into a Special Revenue Account for use by the District Attorney's office for the investigation and prosecution of Real Estate Fraud. In addition to the recorded

## DISTRICT ATTORNEY

---

document fees funding from a specialized grant referenced above will be utilized.

### *Victim Witness Assistance*

The Victim Witness Assistance program serves as a resource to crime victims. The advocates funded under this grant are required to provide the following services: crisis intervention, emergency assistance, resource referral and assistance, direct counseling and therapy, claim assistance, property return, orientation, court escort, case status/ disposition, notification of family and friends.

Funding is received through Cal-EMA (formerly Office of Emergency Services). This grant is applied for and granted on an annual basis.

### *Victim Witness Claims*

The Claims Specialist provide application intake, data entry, determine eligibility, and verify losses, including; medical, dental, wage loss, support loss, mental health counseling, funeral burial and relocation expenses. The benefit of having the claims processed in our county is that bills can be paid in a timely manner. The average processing time of claims done directly by the VCP Board is 3-6 months which causes ongoing stress to victims as providers will cut off services until payment is received. Funding is received through Cal-EMA (formerly Office of Emergency Services). This grant is applied for and granted on an annual basis.

### *Workers Compensation Insurance Fraud*

The El Dorado County Workers Compensation Unit provides the investigation and prosecution of Workers Compensation Insurance Fraud in El Dorado County. This includes claimant, premium, uninsured employer and medical provider fraud. Claimant fraud includes employees making false or exaggerated

claims. Premium fraud occurs when employers misstate the type of work and or work experience of their employees in order to pay a lower premium. Uninsured employers are those who don't protect their employees by failing to obtain required workers compensation coverage. Medical provider fraud can occur when medical professional's bill for services not rendered, misrepresent the service provided, bill for unnecessary services, etc. This program is funded on an annual basis through a grant application to the State Department of Insurance.

### **Chief Administrative Office Recommendation**

The Recommended Budget represents an increase of \$10,488 or less than 1% in revenues and an increase of \$315,040 or 4% in appropriations when compared to the FY 2015-16 approved budget. As a result, the Net County Cost is increased by \$304,552 or 5%. This represents a status quo budget.

The slight increase in revenue is due to an increase in the department's share of the public safety sales tax.

The increase in appropriations is primarily related to an increase in Services and Supplies of \$163,138. This amount includes the department's contract with the Center for Violence Free Relationships for victim support services, connectivity to the courts communication system (CLETS), and general liability. Some of these costs were incurred in FY 2015-16 but not included in the budget. Salaries and benefits are primarily increasing in worker's compensation (\$53,000) and retirement (\$81,000).

The recommended budget includes several position allocation changes that reflect the District Attorney's continued efforts to restructure his office, increasing the use of

## DISTRICT ATTORNEY

---

technology to realize efficiency. The budget includes two vacant, unfunded Paralegal allocations. As a result of restructuring efforts, the District Attorney expects to delete two vacant allocations over the

course of the next year. The savings in the current budget associated with these positions is approximately \$185,000, which will become ongoing savings once the allocations are deleted.

### Financial Information by Fund Type

**FUND TYPE:** 10 GENERAL FUND  
**DEPARTMENT:** 22 DISTRICT ATTORNEY

		MID-YEAR PROJECTION	CURRENT YR APPROVED BUDGET	DEPARTMENT REQUEST	CAO RECOMMENDED BUDGET	DIFFERENCE CURR YR CAO RECMD
<b>TYPE: R REVENUE</b>						
<b>SUBOBJ</b>	<b>SUBOBJ TITLE</b>					
0342	PENALTY: BAD CHECK RESTITUTION	2,978	5,000	2,500	2,500	-2,500
0348	PENALTY: SUSPENDED DRIVERS LICENSE	8,300	16,500	10,000	10,000	-6,500
<b>CLASS: 03</b>	<b>REV: FINE, FORFEITURE &amp;</b>	11,278	21,500	12,500	12,500	-9,000
0860	ST: PUBLIC SAFETY SALES TAX	938,139	968,880	969,562	979,251	10,371
0880	ST: OTHER	610,612	610,612	610,612	610,612	0
0896	ST: VEHICLE THEFT ALLOCATION	205,453	195,000	197,000	197,000	2,000
0898	ST: OES - OFFICE EMERGENCY SERVICES	88,934	88,934	88,934	88,934	0
<b>CLASS: 05</b>	<b>REV: STATE INTERGOVERNMENTAL</b>	1,843,138	1,863,426	1,866,108	1,875,797	12,371
1100	FED: OTHER	17,000	17,000	17,000	17,000	0
1124	FED:OFFICE OF EMERGENCY SERVICES	278,351	278,351	278,351	278,351	0
<b>CLASS: 10</b>	<b>REV: FEDERAL</b>	295,351	295,351	295,351	295,351	0
1501	COURT: FEE	360	500	500	500	0
1746	BLOOD DRAWS	45,000	45,000	35,000	35,000	-10,000
<b>CLASS: 13</b>	<b>REV: CHARGE FOR SERVICES</b>	45,360	45,500	35,500	35,500	-10,000
1940	MISC: REVENUE	2,361	0	2,500	2,500	2,500
1942	MISC: REIMBURSEMENT	300	0	0	0	0
<b>CLASS: 19</b>	<b>REV: MISCELLANEOUS</b>	2,661	0	2,500	2,500	2,500
2020	OPERATING TRANSFERS IN	659,003	702,054	631,359	716,671	14,617
<b>CLASS: 20</b>	<b>REV: OTHER FINANCING SOURCES</b>	659,003	702,054	631,359	716,671	14,617
<b>TYPE: R SUBTOTAL</b>		2,856,791	2,927,831	2,843,318	2,938,319	10,488

# DISTRICT ATTORNEY

## Financial Information by Fund Type

FUND TYPE: 10 GENERAL FUND  
 DEPARTMENT: 22 DISTRICT ATTORNEY

		MID-YEAR PROJECTION	CURRENT YR APPROVED BUDGET	DEPARTMENT REQUEST	CAO RECOMMENDED BUDGET	DIFFERENCE CURR YR CAO RECMD
<b>TYPE: E EXPENDITURE</b>						
<b>SUBOBJ</b>	<b>SUBOBJ TITLE</b>					
3000	PERMANENT EMPLOYEES / ELECTED	5,133,656	5,491,968	5,665,148	5,479,772	-12,196
3001	TEMPORARY EMPLOYEES	219,936	150,000	150,000	100,000	-50,000
3002	OVERTIME	169,646	142,000	180,000	142,000	0
3003	STANDBY PAY	10,312	0	0	0	0
3004	OTHER COMPENSATION	406,508	90,700	82,200	82,200	-8,500
3005	TAHOE DIFFERENTIAL	11,109	14,400	12,000	12,000	-2,400
3006	BILINGUAL PAY	4,100	6,240	4,160	4,160	-2,080
3020	RETIREMENT EMPLOYER SHARE	1,243,869	1,350,510	1,431,538	1,431,538	81,028
3022	MEDI CARE EMPLOYER SHARE	84,062	78,049	81,661	81,661	3,612
3040	HEALTH INSURANCE EMPLOYER	786,609	821,207	833,409	833,409	12,202
3041	UNEMPLOYMENT INSURANCE EMPLOYER	0	0	120	120	120
3042	LONG TERM DISABILITY EMPLOYER	13,720	13,827	13,650	13,650	-177
3043	DEFERRED COMPENSATION EMPLOYER	10,293	20,678	38,622	38,622	17,944
3046	RETIREE HEALTH: DEFINED	60,195	60,195	62,710	62,710	2,515
3060	WORKERS' COMPENSATION EMPLOYER	111,429	111,429	164,675	164,675	53,246
3080	FLEXIBLE BENEFITS	74,057	213,512	208,112	208,112	-5,400
<b>CLASS: 30</b>	<b>SALARY &amp; EMPLOYEE BENEFITS</b>	<b>8,339,501</b>	<b>8,564,715</b>	<b>8,928,005</b>	<b>8,654,629</b>	<b>89,914</b>
4040	TELEPHONE COMPANY VENDOR	6,456	6,450	6,000	6,000	-450
4041	COUNTY PASS THRU TELEPHONE CHARGES	6,718	0	6,630	6,630	6,630
4044	CABLE/INTERNET SERVICE	248	0	500	500	500
4060	FOOD AND FOOD PRODUCTS	572	0	600	600	600
4100	INSURANCE: PREMIUM	52,520	52,520	65,111	65,111	12,591
4123	JURY/WITNESS EXPENSE	15,000	15,000	15,000	15,000	0
4124	WITNESS FEE	5,000	5,000	5,000	5,000	0
4128	WITNESS MILEAGE	5,000	5,000	5,000	5,000	0
4144	MAINT: COMPUTER	4,500	4,500	4,500	4,500	0
4220	MEMBERSHIPS	15,982	15,982	16,000	16,000	18
4221	MEMBERSHIPS: LEGISLATIVE ADVOCACY	4,075	0	3,000	3,000	3,000
4260	OFFICE EXPENSE	10,165	10,000	10,000	10,000	0
4261	POSTAGE	5,000	5,000	5,000	5,000	0
4263	SUBSCRIPTION / NEWSPAPER / JOURNALS	3,050	3,050	3,050	3,050	0
4265	LAW BOOKS	29,562	15,023	20,000	20,000	4,977
4266	PRINTING / DUPLICATING SERVICES	15	500	500	500	0
4267	ON-LINE SUBSCRIPTIONS	880	6,500	6,500	6,500	0
4300	PROFESSIONAL & SPECIALIZED SERVICES	72,058	15,000	84,500	84,500	69,500
4308	EXTERNAL DATA PROCESSING SERVICES	58,528	25,000	41,000	41,000	16,000
4317	CRIMINAL INVESTIGATION	0	2,000	2,000	2,000	0
4320	VERBATIM: TRANSCRIPTION	11,648	10,000	10,000	10,000	0
4322	MEDICAL & SOBRIETY EXAMINATIONS	35,000	35,000	35,000	35,000	0
4324	MEDICAL,DENTAL,LAB & AMBULANCE SRV	3,000	3,000	3,000	3,000	0
4420	RENT & LEASE: EQUIPMENT	18,000	18,000	18,000	18,000	0



# DISTRICT ATTORNEY

## Financial Information by Fund Type

**FUND TYPE:** 10 GENERAL FUND  
**DEPARTMENT:** 22 DISTRICT ATTORNEY

	MID-YEAR PROJECTION	CURRENT YR APPROVED BUDGET	DEPARTMENT REQUEST	CAO RECOMMENDED BUDGET	DIFFERENCE CURR YR CAO RECMD
4421 RENT & LEASE: SECURITY SYSTEM	5,760	4,000	6,600	6,600	2,600
4440 RENT & LEASE: BUILDING &	66,680	65,000	72,000	72,000	7,000
4460 EQUIP: SMALL TOOLS & INSTRUMENTS	1,500	1,500	1,500	1,500	0
4461 EQUIP: MINOR	5,000	5,000	20,000	20,000	15,000
4462 EQUIP: COMPUTER	34,595	34,595	2,500	2,500	-32,095
4464 EQUIP: LAW ENFORCEMENT	253	0	1,500	1,500	1,500
4465 EQUIP: VEHICLE	6,000	6,000	18,000	18,000	12,000
4500 SPECIAL DEPT EXPENSE	17,408	5,000	5,000	5,000	0
4501 SPECIAL PROJECTS	43,198	43,198	43,198	49,198	6,000
4503 STAFF DEVELOPMENT	22,403	15,745	18,000	18,000	2,255
4510 DISTRICT ATTORNEY	4,968	0	0	0	0
4529 SOFTWARE LICENSE	3,500	3,500	3,500	3,500	0
4540 STAFF DEVELOPMENT (NOT 1099)	40	0	0	0	0
4600 TRANSPORTATION & TRAVEL	23,971	17,344	20,000	20,000	2,656
4602 MILEAGE: EMPLOYEE PRIVATE AUTO	9,532	6,000	10,000	10,000	4,000
4605 RENT & LEASE: VEHICLE	60,098	59,657	75,013	75,013	15,356
4606 FUEL PURCHASES	42,179	42,000	40,000	40,000	-2,000
4608 HOTEL ACCOMMODATIONS	27,405	14,500	25,000	25,000	10,500
4620 UTILITIES	28,094	25,000	30,000	30,000	5,000
<b>CLASS: 40 SERVICE &amp; SUPPLIES</b>	<b>765,561</b>	<b>600,564</b>	<b>757,702</b>	<b>763,702</b>	<b>163,138</b>
5240 CONTRIB: NON-CNTY GOVERNMENTAL	50,000	50,000	50,000	50,000	0
5300 INTERFND: SERVICE BETWEEN FUND	2,310	2,500	2,500	2,500	0
<b>CLASS: 50 OTHER CHARGES</b>	<b>52,310</b>	<b>52,500</b>	<b>52,500</b>	<b>52,500</b>	<b>0</b>
6025 LEASEHOLD IMPROVEMENTS	667	0	0	0	0
6042 FIXED ASSET: COMPUTER SYSTEM	10,000	10,000	0	0	-10,000
<b>CLASS: 60 FIXED ASSETS</b>	<b>10,667</b>	<b>10,000</b>	<b>0</b>	<b>0</b>	<b>-10,000</b>
7001 OPERATING TRANSFERS OUT: FLEET	0	0	34,000	34,000	34,000
<b>CLASS: 70 OTHER FINANCING USES</b>	<b>0</b>	<b>0</b>	<b>34,000</b>	<b>34,000</b>	<b>34,000</b>
7200 INTRAFUND TRANSFERS: ONLY GENERAL	49,000	60,300	49,000	49,000	-11,300
7221 INTRAFND: RADIO EQUIPMENT & SUPPORT	1,000	1,000	1,000	1,000	0
7223 INTRAFND: MAIL SERVICE	3,848	3,848	4,248	4,248	400
7224 INTRAFND: STORES SUPPORT	287	287	175	175	-112
7232 INTRAFND: MAINT BLDG & IMPROVMNTS	2,000	2,000	0	0	-2,000
<b>CLASS: 72 INTRAFUND TRANSFERS</b>	<b>56,135</b>	<b>67,435</b>	<b>54,423</b>	<b>54,423</b>	<b>-13,012</b>
7352 INTRFND ABATEMENTS: DA/FS CONTRACT	-476,000	-476,000	-350,000	-425,000	51,000
<b>CLASS: 73 INTRAFUND ABATEMENT</b>	<b>-476,000</b>	<b>-476,000</b>	<b>-350,000</b>	<b>-425,000</b>	<b>51,000</b>
<b>TYPE: E SUBTOTAL</b>	<b>8,748,174</b>	<b>8,819,214</b>	<b>9,476,630</b>	<b>9,134,254</b>	<b>315,040</b>
<b>FUND TYPE: 10 SUBTOTAL</b>	<b>5,891,383</b>	<b>5,891,383</b>	<b>6,633,312</b>	<b>6,195,935</b>	<b>304,552</b>
<b>DEPARTMENT: 22 SUBTOTAL</b>	<b>5,891,383</b>	<b>5,891,383</b>	<b>6,633,312</b>	<b>6,195,935</b>	<b>304,552</b>

## DISTRICT ATTORNEY

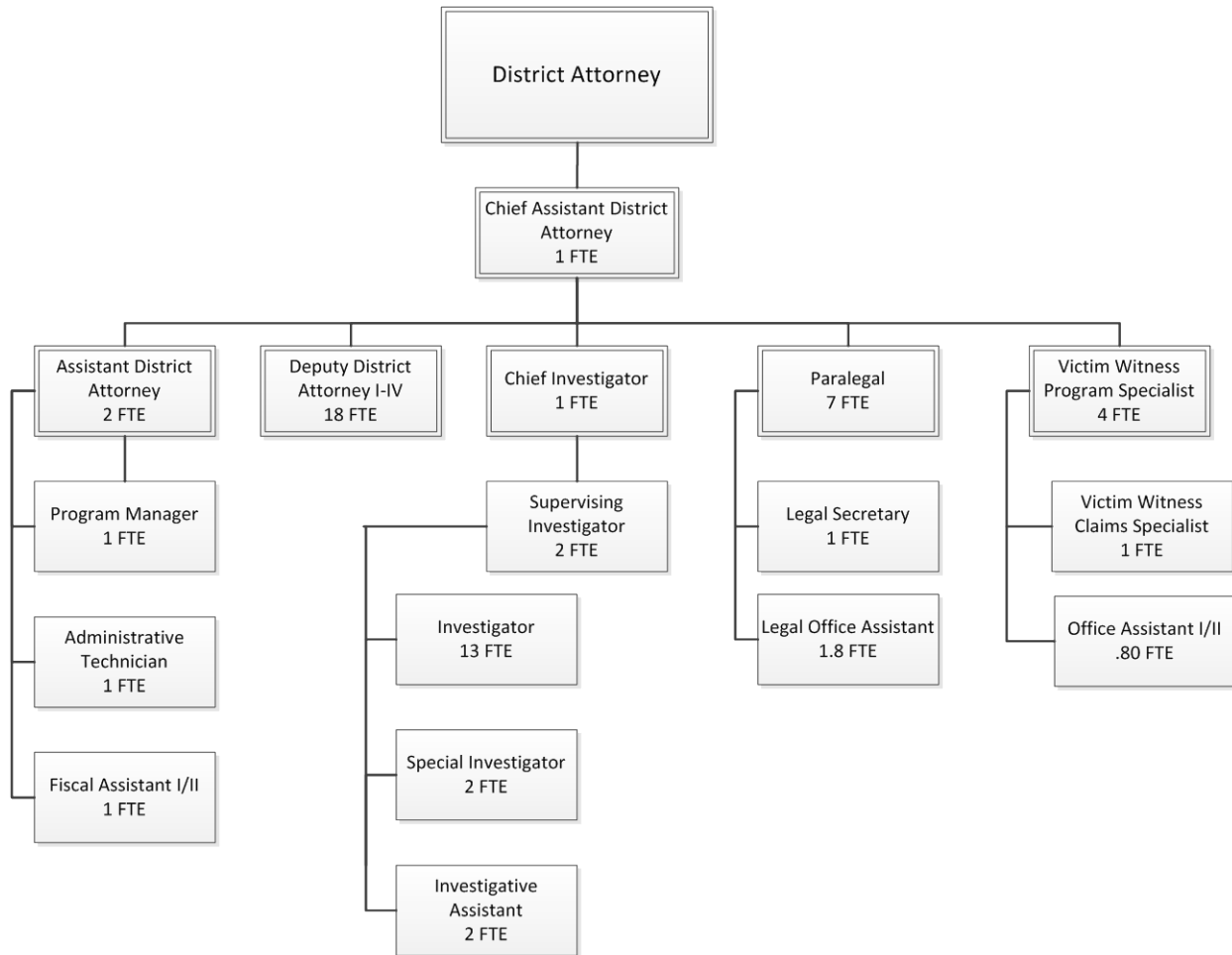
### Personnel Allocation

Classification Title	2015-16 Adjusted Allocation	2016-17 Dept Request	2016-17 CAO Recm'd	Diff from Adjusted
District Attorney	1.00	1.00	1.00	0.00
Assistant District Attorney	1.00	2.00	2.00	1.00
Chief Assistant District Attorney	1.00	1.00	1.00	0.00
Chief Investigator (DA)	1.00	1.00	1.00	0.00
Department Analyst I/II	1.00	1.00	1.00	0.00
Deputy District Attorney I-IV	19.00	18.00	18.00	-1.00
Fiscal Assistant I/II	1.00	1.00	1.00	0.00
Investigative Assistant	2.00	2.00	2.00	0.00
Investigator (D.A.)	13.00	13.00	13.00	0.00
Legal Office Assistant I/II	2.80	1.80	1.80	-1.00
Legal Secretarial Services Supervisor	2.00	0.00	0.00	-2.00
Legal Secretary I/II	5.00	1.00	1.00	-4.00
Office Assistant I/II	0.80	0.80	0.80	0.00
Paralegal *	1.00	6.00	6.00	5.00
Program Manager I	1.00	1.00	1.00	0.00
Special Investigator - District Attorney	1.00	2.00	2.00	1.00
Supervising Investigator (DA)	1.00	2.00	2.00	1.00
Victim Witness Claims Specialist I/II	1.00	1.00	1.00	0.00
Victim Witness Program Coordinator	1.00	0.00	0.00	-1.00
Victim Witness Program Specialist	3.00	4.00	4.00	1.00
<b>Department Total</b>	<b>59.60</b>	<b>59.60</b>	<b>59.60</b>	<b>0.00</b>

\* Allocation includes 2 Vacant, Unfunded Paralegal's

# DISTRICT ATTORNEY

---



Total FTE: 59.6