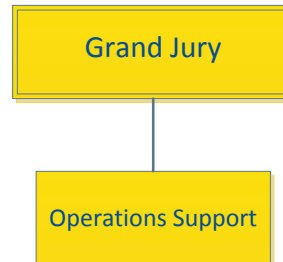




Grand Jury

Organizational Chart



Mission Statement

The Grand Jury ethically and responsibly investigates complaints, examines fiscal and management practices in County government, Cities and Special Districts and makes recommendations based on facts for correction.

Department Overview

Grand Juries are appointed by the local State Superior Court of California and serve as investigative bodies. Civil grand juries are empowered to inquire into alleged criminal acts within the County; examine fiscal and management practices in County government, departments, cities and special districts; and to investigate allegations of misconduct of any public office or officer within the County. If evidence warrants, the Jury files formal charges.

2015-16 Summary of Department Programs				
	Appropriation	Revenue	Net County Cost	Staffing
Operations Support	\$75,299	\$0	\$75,299	0.00
<i>TOTAL</i>	<i>\$75,299</i>	<i>\$0</i>	<i>\$75,299</i>	<i>0.00</i>

Recommended Budget Highlights for Grand Jury

The Recommended Budget decreases appropriations and Net County Cost by \$4,848 for a total Net County Cost of \$75,299.

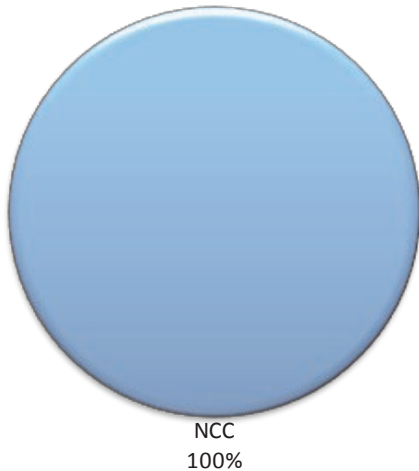
The membership and focus areas of the Grand Jury changes from year to year. The FY 2015-16 Recommended Budget includes a 6.25% decrease in general fund appropriations based on Board direction to reduce spending.

Grand Jury

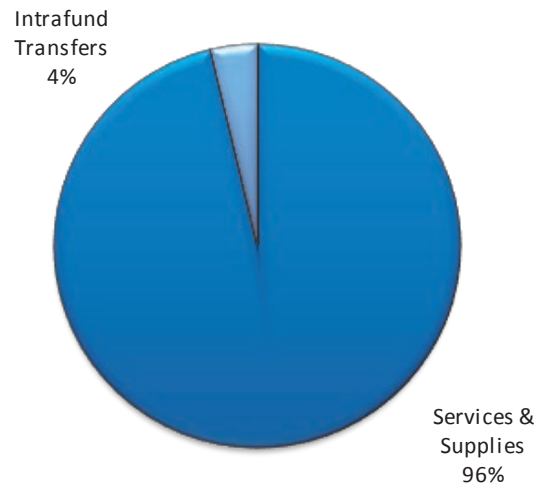
	12/13	13/14	14/15	15/16	15/16
	Actual	Actual	Projected	Dept Req	CAO Rec
Total Revenue	-	-	-	-	-
Salaries	-	-			
Benefits	520	-			
Services & Supplies	41,908	47,616	77,550	72,550	72,550
Intrafund Transfers	2,679	3,334	2,597	2,749	2,749
Total Appropriations	45,107	50,950	80,147	75,299	75,299
NCC	45,107	50,950	80,147	75,299	75,299
FTE's	-	-	-	-	-



Source of Funds



Use of Funds



Source of Funds—Grand Jury

Net County Cost (\$75,299): The Grand Jury is entirely funded with discretionary General Fund tax dollars. These revenues are collected in Department 15 – General Fund Other Operations.

Use of Funds—Grand Jury

Services & Supplies (\$72,550): Primarily comprised of reimbursements for mileage (\$35,000) and reimbursements for meeting time (\$28,000).

Intrafund Transfers (\$2,749): Intrafund transfers consist of charges from other departments for mail services (\$2,449).

Operations Support Program

Program Summary:

The Grand Jury budget reflects the costs which may be incurred by the Civil Grand Jury members for their activities, as authorized by the California Penal Code and the local Superior Court.

El Dorado County
 Detail of Financing Sources and Financing Uses
 Governmental Funds
 Fiscal Year 2015-16

Budget Unit **19 Grand Jury**
 Function **Public Protection**
 Activity **Judicial**

Detail by Revenue Category and Expenditure Object	2013-14 Actual	2014-15 Actual <input type="checkbox"/> Estimated <input checked="" type="checkbox"/>	2015-16 Department Requested	2015-16 CAO Recommended
1	2	3	4	5

Services and Supplies

4041 Cnty Pass thru Telephone Chrges to Depts	\$ 118	\$ 50	\$ 50	\$ 50
4080 Household Expense	65	-	-	-
4127 Grand Jury Expense	18,243	28,000	28,000	28,000
4260 Office Expense	312	1,500	1,500	1,500
4261 Postage	-	500	500	500
4262 Software	-	-	650	650
4266 Printing / Duplicating	790	650	-	-
4300 Professional and Specialized Services	1,004	5,000	-	-
4420 Rents and Leases - Equipment	2,651	2,500	2,500	2,500
4503 Staff Development	2,140	2,850	2,850	2,850
4600 Transportation and Travel	1,105	1,500	1,500	1,500
4602 Employee - Private Auto Mileage	21,188	35,000	35,000	35,000
Total Services and Supplies	\$ 47,616	\$ 77,550	\$ 72,550	\$ 72,550

Intrafund Transfers

7200 Intrafund Transfers	\$ -	\$ 300	\$ 300	\$ 300
7223 Intrafund: Mail Service	2,112	2,254	2,449	2,449
7224 Intrafund: Stores Support	-	43	-	-
7231 Intrafund: IS Programming Support	1,222	-	-	-
Total Intrafund Transfers	\$ 3,334	\$ 2,597	\$ 2,749	\$ 2,749

Total Expenditures/Appropriations	\$ 50,950	\$ 80,147	\$ 75,299	\$ 75,299
Net Cost	\$ (50,950)	\$ (80,147)	\$ (75,299)	\$ (75,299)