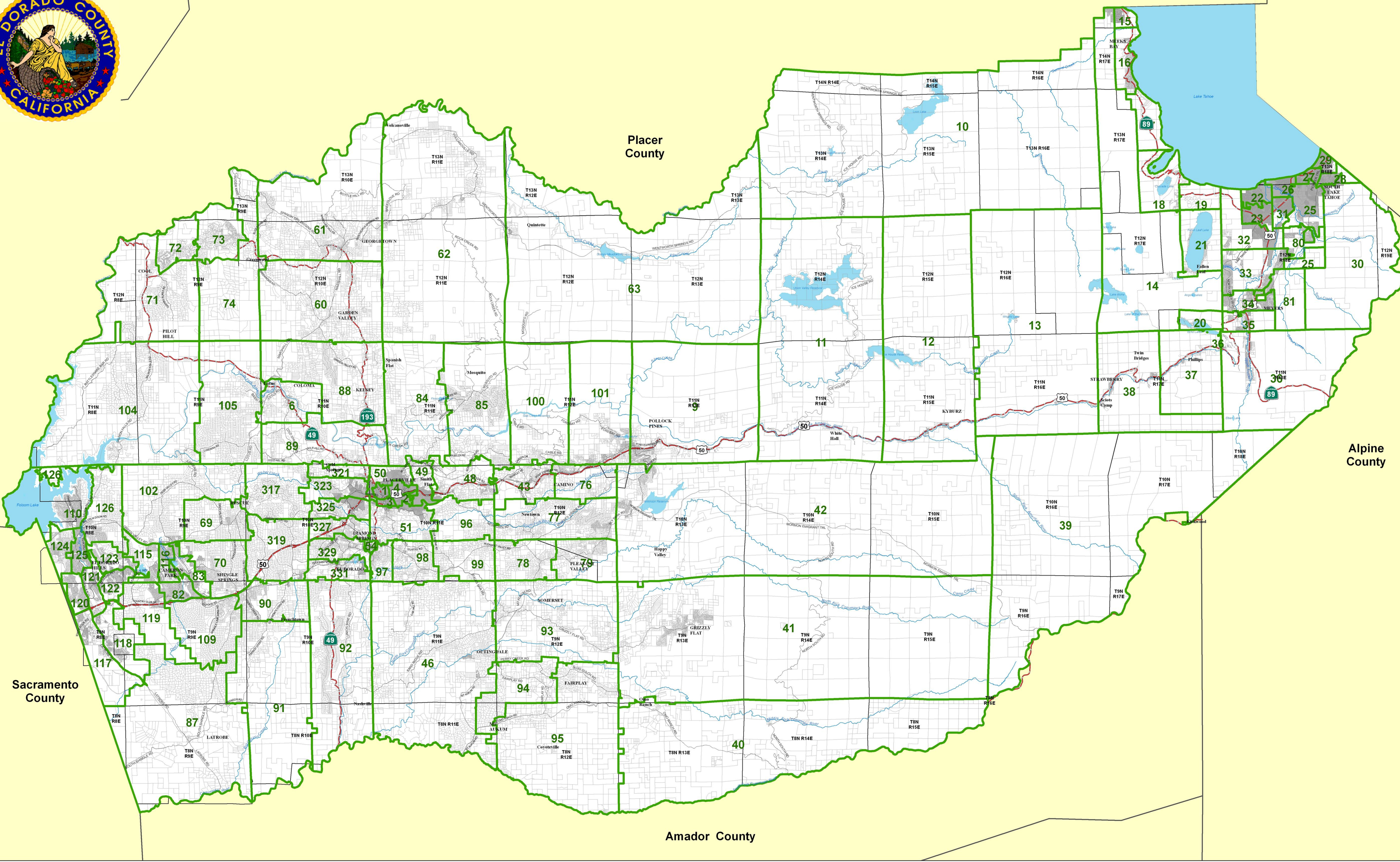


County of El Dorado Index to Assessor Books



DISCLAIMER
 THIS DEPICTION WAS COMPILED FROM UNVERIFIED PUBLIC AND PRIVATE SOURCES AND IS ILLUSTRATIVE ONLY. NO REPRESENTATION IS MADE AS TO ACCURACY OF THAT INFORMATION AND NONE MAY BE INFERRED. THEREFORE, USERS MAKE USE TO THAT INFORMATION AT THEIR OWN RISK.
 NOTES:
 LAYER INFORMATION MAY COVER ADDITIONAL AREAS OUTSIDE OF THE DISPLAYED AREA.
 PREPARED AT THE REQUEST OF: Tim Haskins, DATE: 8/17/09
 MAP PREPARED BY: J.L., DATE: 8/17/09
 U.S. PROJECT OF:
 EL DORADO COUNTY SURVEYING & DIVISION
 PHONE: (530) 624-6511 FAX: (530) 628-4731

- Assessor's Parcel Book Outline
- City Boundaries
- Township and Range
- Rivers
- Lakes
- Highways
- Major Roads



Map displayed in State Plane Coordinate System (NAD 1983 California Zone 2, feet)