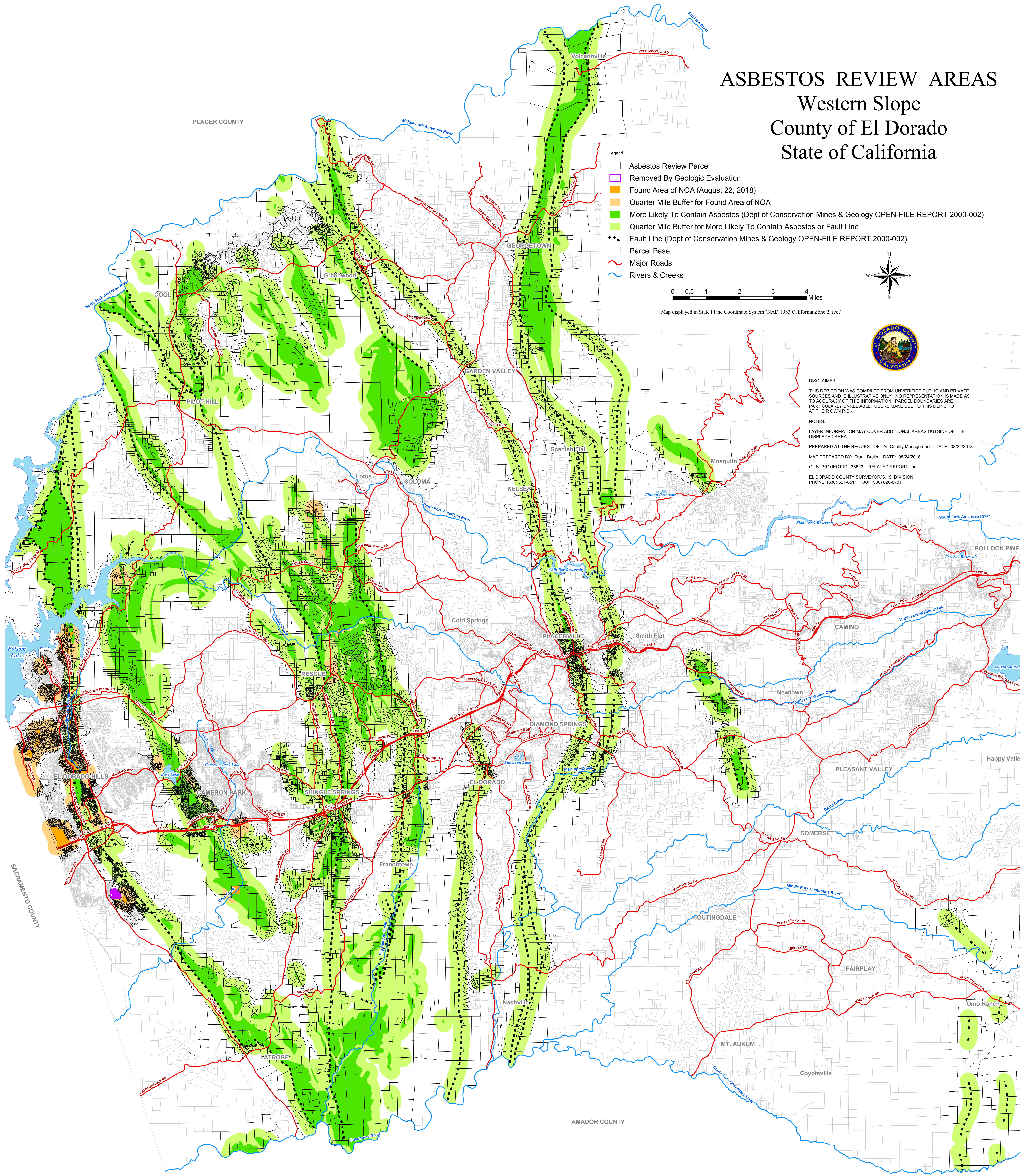


ASBESTOS REVIEW AREAS

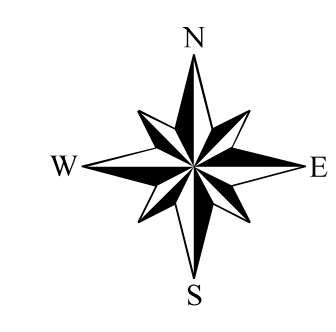
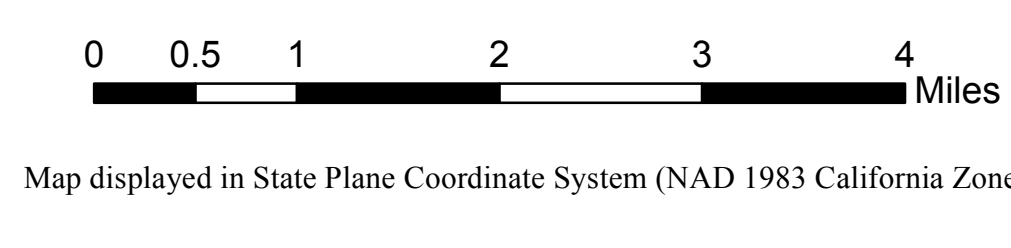
Western Slope

County of El Dorado

State of California



- Legend**
- Asbestos Review Parcel
 - Removed By Geologic Evaluation
 - Found Area of NOA (August 22, 2018)
 - Quarter Mile Buffer for Found Area of NOA
 - More Likely To Contain Asbestos (Dept of Conservation Mines & Geology OPEN-FILE REPORT 2000-002)
 - Quarter Mile Buffer for More Likely To Contain Asbestos or Fault Line
 - Fault Line (Dept of Conservation Mines & Geology OPEN-FILE REPORT 2000-002)
 - Parcel Base
 - Major Roads
 - Rivers & Creeks



DISCLAIMER
 THIS DEPICTION WAS COMPILED FROM UNVERIFIED PUBLIC AND PRIVATE SOURCES AND IS ILLUSTRATIVE ONLY. NO REPRESENTATION IS MADE AS TO ACCURACY OF THIS INFORMATION. PARCEL BOUNDARIES ARE PARTICULARLY UNRELIABLE. USERS MAKE USE TO THIS DEPICTION AT THEIR OWN RISK.

NOTES:
 LAYER INFORMATION MAY COVER ADDITIONAL AREAS OUTSIDE OF THE DISPLAYED AREA.
 PREPARED AT THE REQUEST OF: Air Quality Management, DATE: 08/22/2018
 MAP PREPARED BY: Frank Bruijn, DATE: 08/24/2018
 G.I.S. PROJECT ID: 73523, RELATED REPORT: na
 EL DORADO COUNTY SURVEYOR/G.I.S. DIVISION
 PHONE: (530) 621-6511 FAX: (530) 626-8731

PLACER COUNTY

SACRAMENTO COUNTY

AMADOR COUNTY